

Raymarine®



LIGHTHOUSE SPORT

VERSION 3.9XX

Basic operation instructions

English (en-US)
Date: 04-2019
Document number: 81384-2
© 2019 Raymarine UK Limited



Important information about this document

This document provides an introduction to using your Raymarine multifunction display, covering only basic operations.

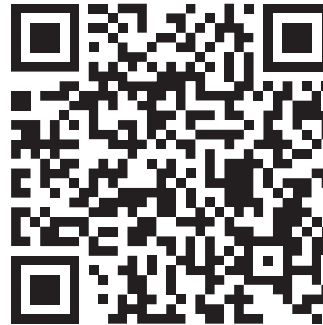
To obtain the complete “*LightHouse Sport Advanced operations*” document, visit the Raymarine website. The document is available in 2 different formats:

1. Free download (PDF format)
2. Purchase a printed manual (paperback book format)

www.raymarine.com/manuals



Download complete manual (free)



Purchase complete printed manual

Tip: If you own a smartphone or tablet with a camera you can use the QR code shown above to visit the “LightHouse Sport Manuals and documents” area of the website directly. To use this code, download a free “QR barcode scanner” app from the Apple or Android appstore and then point the camera at the QR code on this page.

English (en-US)





Trademark and patents notice

Raymarine, Tacktick, Clear Pulse, Truzoom, SeaTalk, SeaTalk^{hs}, SeaTalkng, and **Micronet**, are registered or claimed trademarks of Raymarine Belgium.

FLIR, LightHouse, DownVision, SideVision, RealVision, HyperVision, Dragonfly, Element, Quantum, Axiom, InstaAlert, Infrared Everywhere, The World's Sixth Sense and **ClearCruise** are registered or claimed trademarks of FLIR Systems, Inc.

All other trademarks, trade names, or company names referenced herein are used for identification only and are the property of their respective owners.

This product is protected by patents, design patents, patents pending, or design patents pending.

Warranty registration

To register your Raymarine product ownership, please visit www.raymarine.com and register online.

It is important that you register your product to receive full warranty benefits. Your unit package includes a bar code label indicating the serial number of the unit. You will need this serial number when registering your product online. You should retain the label for future reference.

Technical accuracy

To the best of our knowledge, the information in this document was correct at the time it was produced. However, Raymarine cannot accept liability for any inaccuracies or omissions it may contain. In addition, our policy of continuous product improvement may change specifications without notice. As a result, Raymarine cannot accept liability for any differences between the product and this document. Please check the Raymarine website (www.raymarine.com) to ensure you have the most up-to-date version(s) of the documentation for your product.

Software updates



Check the Raymarine website for the latest software releases for your product.

www.raymarine.com/software

Publication copyright

Copyright ©2019 Raymarine UK Ltd. All rights reserved.

English (en-US)

Document number: 81384-2
AB;16218;2019-04-25T11:21:02







Contents

- Chapter 1 Important information 7**
 - Disclaimers 7
- Chapter 2 Set up 8**
 - 2.1 Getting started..... 8
 - Display controls 8
 - Startup wizard 9
 - First power up Limitation on Use acknowledgement 10
 - Configuring transducer settings 10
 - Identifying engines..... 11
 - Performing a settings or factory reset..... 12
 - Importing user data 12
 - 2.2 Shortcuts 12
 - 2.3 Switching active app..... 13
 - 2.4 Memory card compatibility 14
 - Removing MicroSD card from its adaptor..... 14
 - Inserting a MicroSD card 15
 - 2.5 Data sources menu 16
 - 2.6 Software updates 17
 - Updating display software using a memory card 17
 - Updating software using an internet connection 19
- Chapter 3 Homescreen.....21**
 - 3.1 Homescreen overview..... 21
 - Available apps..... 22
 - Assigning app pages to Quicklaunch buttons..... 23
 - 3.2 Customizing app pages..... 23
 - 3.3 Settings menu..... 24
 - 3.4 Alarms..... 25
 - 3.5 Position settings 26
- Chapter 4 Waypoints, Routes and Tracks 28**
 - 4.1 Waypoints..... 28
 - Placing a waypoint (Quick method)..... 28
 - Waypoint management..... 29
 - 4.2 Routes 32
 - Creating a Route 32





- Route management 33
- 4.3 Tracks 35
 - Creating a track 35
 - Track management 36
- 4.4 User data import and export 37
 - Saving user data 37
 - Importing user data 38

Chapter 5 Chart app..... 39

- 5.1 Chart app overview..... 39
 - Chart app controls 40
 - Selecting a chart card 41
 - Chart modes..... 41
 - Navigation 43
 - Automatic Identification System (AIS) support..... 45
 - RealBathy™ 46

Chapter 6 Fishfinder app..... 48

- 6.1 Fishfinder app overview..... 48
 - Fishfinder channels — Element™ HV displays 49
 - Fishfinder channels — Element™ S displays 50
 - Fishfinder app controls 50
 - Placing a Waypoint in the Fishfinder app 52

Chapter 7 Dashboard app..... 54

- 7.1 Dashboard app overview..... 54
 - Switching data page 54
 - Hiding and showing data pages 55
 - Navigation and sailing dials 55

Chapter 8 Technical support..... 57

- 8.1 Raymarine product support and servicing 57
 - Identify display variant and software version..... 59
 - Viewing product information..... 59
- 8.2 Learning resources 61



Chapter 1: Important information



Warning: Ensure safe navigation

This product is intended only as an aid to navigation and must never be used in preference to sound navigational judgment. Only official government charts and notices to mariners contain all the current information needed for safe navigation, and the captain is responsible for their prudent use. It is the user's responsibility to use official government charts, notices to mariners, caution and proper navigational skill when operating this or any other Raymarine product.

Disclaimers

Raymarine does not warrant that this product is error-free or that it is compatible with products manufactured by any person or entity other than Raymarine.

This product uses digital chart data, and electronic information from Global Navigation Satellite Systems (GNSS) which may contain errors. Raymarine does not warrant the accuracy of such information and you are advised that errors in such information may cause the product to malfunction. Raymarine is not responsible for damages or injuries caused by your use or inability to use the product, by the interaction of the product with products manufactured by others, or by errors in chart data or information utilized by the product and supplied by third parties.

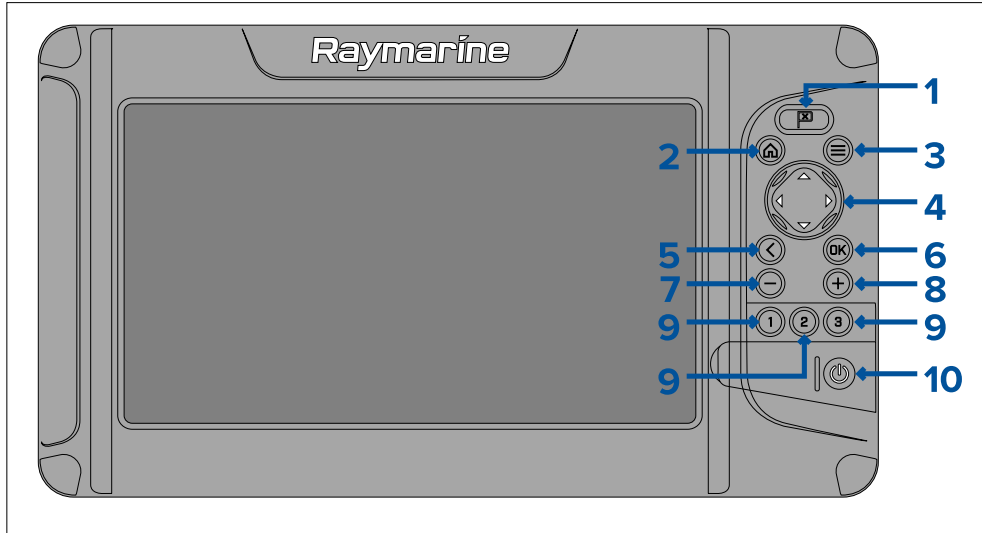
This product supports electronic charts provided by third party suppliers which may be embedded or stored on memory card. Use of such charts is subject to the supplier's End-User Licence Agreement.

Chapter 2: Set up

2.1 Getting started

Display controls

The buttons available on Element™ displays and their function are detailed below.



1. **Waypoint**

- Press to place a waypoint at your vessel's position (unless cursor mode is active in the Chart or Fishfinder app).
- Press to place a waypoint at the cursor's position in the Chart and Fishfinder apps (when in cursor mode).

2. **Home**

- Press to display the Homescreen.

3. **Menu**

- Press to open Homescreen menus and app menus.
- Press and hold for approximately 2 seconds to switch which app has focus in a multi app page.
- Press to close Homescreen menus and app menus.

4. **Directional pad** (8-axis directional controls)

- Use to navigate Homescreen and menus.
- Press any direction to activate cursor mode in the Chart and Fishfinder apps.
- Use to position the cursor in the Chart and Fishfinder apps.

5. **Back**



- Return to previous menu or dialog.
- 6. **OK** — Confirms menu selections, opens context menus
 - Press to confirm a currently highlighted option.
 - Press to open context sensitive menus in the Chart and Fishfinder apps.
- 7. **Minus** (Zoom / Range out)
 - Press to increase the area displayed onscreen in the Chart app.
 - Press to decrease the zoom level in the Fishfinder app, when in Zoom mode.
 - Press to revert to scrolling mode from lowest zoom level in the Fishfinder app.
- 8. **Plus** (Zoom / Range in)
 - Press to decrease the area displayed onscreen in the Chart app.
 - Press once to initiate Zoom mode in the Fishfinder app, subsequent presses will increase the zoom level.
- 9. **Quicklaunch 1 / Quicklaunch 2 / Quicklaunch 3**
 - Press to open the assigned app page.
 - Press and hold to assign the quick launch button to the app page currently highlighted on the Homescreen.
- 10. **Power**
 - Power on — Press and hold until the display beeps (approximately 2 seconds).
 - Shortcuts menu — Press once to open the shortcuts menu.
 - Power off — Press and hold until the display turns off (approximately 5 seconds).
 - Power off — Press to open the Shortcuts menu and then select **Power down display**.

Startup wizard

The first time the display is powered up, or after a **Factory reset** the Startup wizard is displayed.

The Startup wizard helps you to configure the following display settings:

- User interface language
- Boating activity
- Boat details (including: Safety clearances, Number of engines, Number of tanks, Number of batteries and Transducer selection.)

Follow the onscreen instructions to configure the relevant settings.





Important:

Ensure you select the correct type of transducer, an incorrect selection will require a factory reset to correct.

First power up Limitation on Use acknowledgement

After you have completed the Startup wizard the Limitation on Use (LoU) disclaimer is displayed.

Limitations on Use

This product is intended to be used only as an aid to navigation. It is the captain's responsibility to use official government charts, notices to mariners, caution, sound judgment and proper navigational skill when operating their vessel or using this or any other Raymarine product.

1. I acknowledge the above warning, accept the limitations of this product and the electronic charts, and assume total responsibility for and risk associated with using this product.
2. I have read the documentation for this product and the end-user license agreement for any chart I intend to use and agree to be bound by their terms.

NOAA, United States Geological Survey, United States Army Corp of Engineers, Florida Department of Wildlife, Natural Earth. This product has been produced by or for Raymarine and includes data provided by the Canadian Hydrographic Service of the Department of Fisheries and Oceans. The incorporation of data sourced from the Canadian Hydrographic Service of the Department of Fisheries and Oceans within this product does NOT constitute an endorsement by the Canadian Hydrographic Service or the Department of Fisheries and Oceans of this product. Contains information licensed under the Open Government License – Ontario.

OK

You must read and agree to the terms in order to use your display.

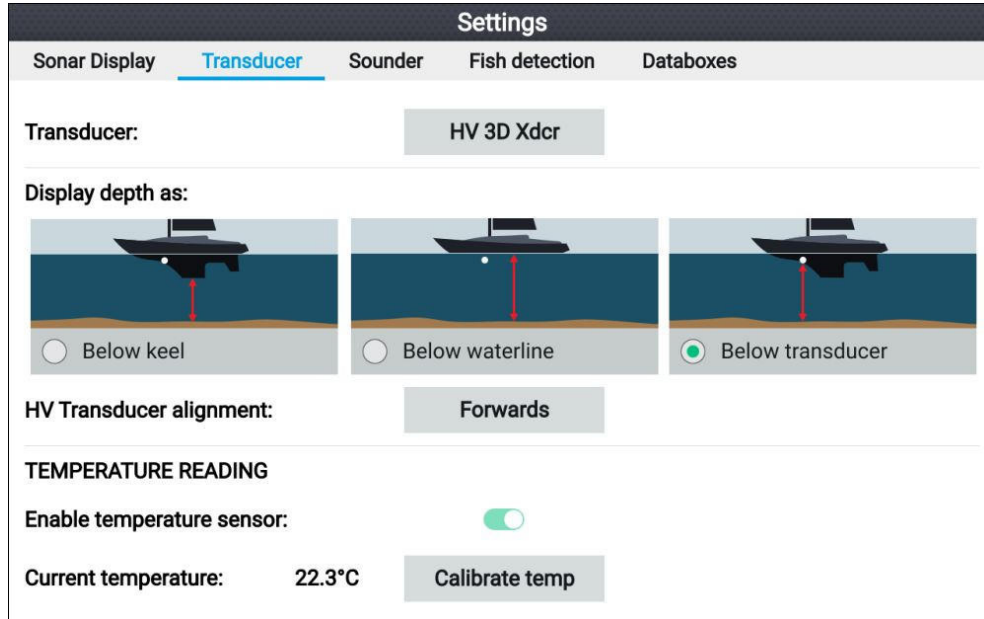
Selecting **OK** means you have accepted the terms of use.

Configuring transducer settings

For systems with a transducer connected, as part of setting up your system for the first time it is important that you correctly configure your transducer.

Transducer configuration settings are available from the **Fishfinder app**.





1. Select **Transducer** from the Fishfinder app's **Settings** menu: **Menu > Settings > Transducer**
2. If your installation required you to install an all-in-one transducer backwards (e.g.: this may occur when connecting the transducer to a trolling motor), then select **Backwards** from the **HV transducer alignment** option. This ensures that the port and starboard channels appear correctly orientated onscreen, otherwise keep the default setting: **Forwards**.
3. Select where you want your depth measurements taken from:
 - i. Below transducer (default) — No offset required
 - ii. Below keel — Enter the distance between the transducer face and the bottom of the keel.
 - iii. Below waterline — Enter the distance between the bottom of your keel and the waterline.
4. You can configure temperature settings as follows:
 - i. Enable or disable temperature readings as required.
 - ii. If enabled, check the temperature reading against the actual water temperature.
 - iii. If the current reading requires adjustment, select **Calibrate temp** and enter the difference between your 2 readings.

Identifying engines

Engine data can be shown on your display, if your engines are transmitting the relevant supported data on the same network as your display. If your system has mislabelled your engines then you can correct this using the Engine identification wizard.

The Engine identification wizard can be accessed from the Boat details menu: **Homescreen > Settings > Boat details > Identify engines**.



1. Ensure the correct number of engines is selected in the **Num of Engines:** box.
2. Select **Identify engines**.
3. Follow the onscreen prompts to complete the engine identification wizard.

Performing a settings or factory reset

Performing a **Factory reset** will erase ALL user data and reset the display's settings to their Factory default values. Performing a **Settings reset** will restore your display's settings to factory defaults, whilst retaining user data.

1. Select **Settings reset**, from the **This display** menu: **Homescreen > Settings > This display > Settings reset** to perform a settings reset.
2. Select **Factory reset**, from the **This display** menu: **Homescreen > Settings > This display > Factory reset** to perform a factory reset.

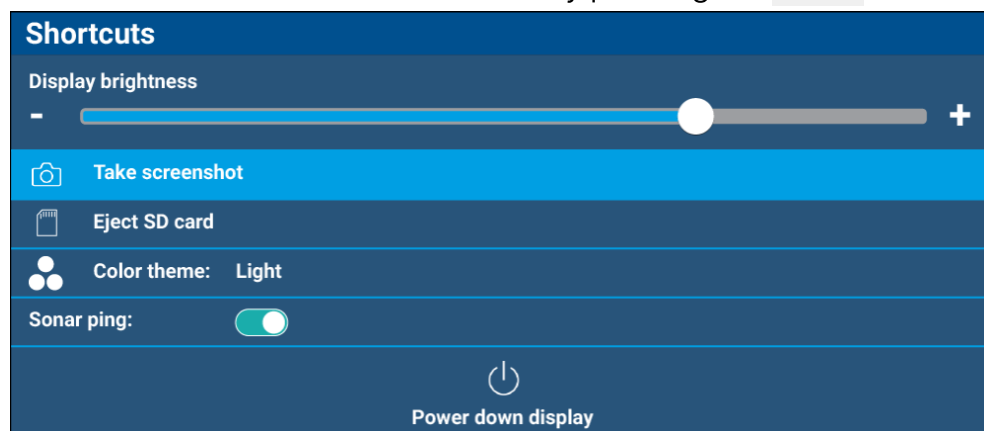
Importing user data

You can import user data (i.e.: GPX format Waypoints, Routes and Tracks) to your display.

1. Insert the MicroSD card that contains your user data files into the memory card reader on your display.
2. Select **Import from card** from the Import/export menu: (**Homescreen > Settings > Import/export > Import from card**).
3. Navigate to your User data file (.gpx).
4. Select the relevant GPX file.
Your user data has now been imported.
5. Select **OK**.

2.2 Shortcuts

The Shortcuts menu can be accessed by pressing the **Power** button.





The following shortcuts are available:

- **Display brightness**
- **Take Screenshot**
- **Eject SD card**
- **Color theme**
- **Sonar ping**
- **Power down display**

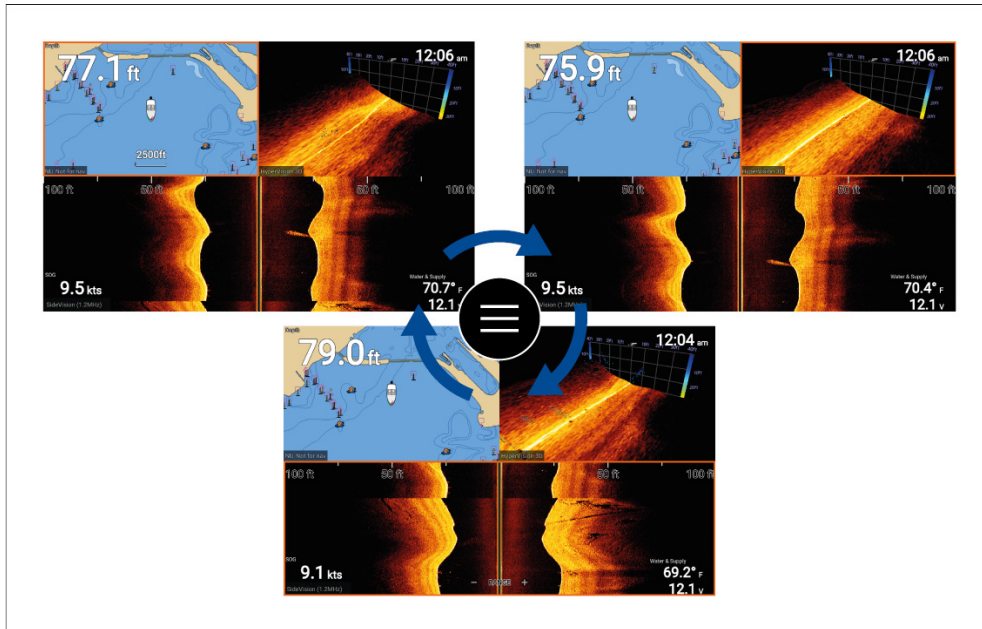
Note:

If no controls are pressed, the **Shortcuts** menu will automatically close after approximately 5 seconds

2.3 Switching active app

On app pages that contain more than 1 app you can select which app has the current focus (i.e.: which app responds to your control).

Press and hold the **Menu** button to move focus to the next app.



In addition to pressing and holding on the **Menu** button you can also switch app focus from the app menu. With a multi app page displayed:

1. Press the **Menu** button.
2. Highlight the **Switch to** option.
3. In app pages with more than 2 apps, use the **Right** and **Left** buttons to highlight the app you want to make active.
4. Press the **OK** button.



5. Press the **Back** button to close the menu.

2.4 Memory card compatibility

MicroSD memory cards can be used to backup / archive data (e.g. Waypoints, Routes and Tracks). Once data is backed up to a memory card, old data can be deleted from the system. The archived data can be retrieved at any time. It is recommended that your data is backed up to a memory card on a regular basis.

Compatible cards

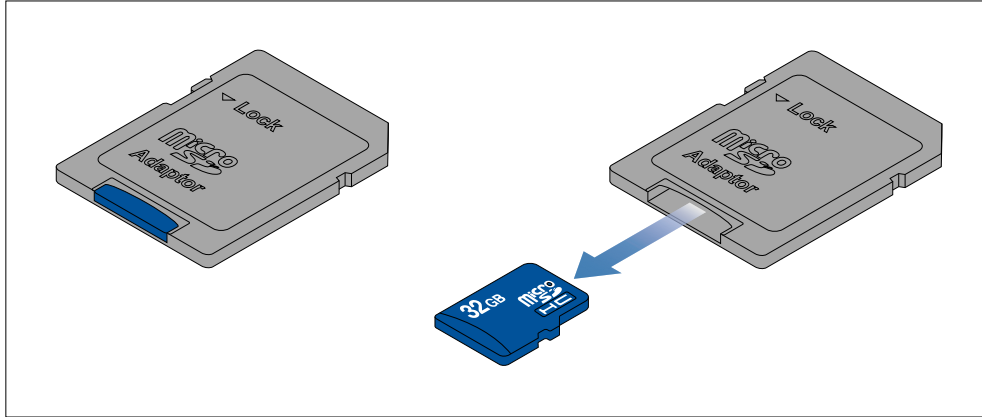
The following types of MicroSD cards are compatible with your MFD:

Type	Size	Native card format	MFD supported Format
MicroSDSC (Micro Secure Digital Standard Capacity)	Up to 4GB	FAT12, FAT16 or FAT16B	NTFS, FAT32
MicroSDHC (Micro Secure Digital High Capacity)	4GB to 32GB	FAT32	NTFS, FAT32
MicroSDXC (Micro Secure Digital eXtended Capacity)	32GB to 2TB	exFAT	NTFS, FAT32

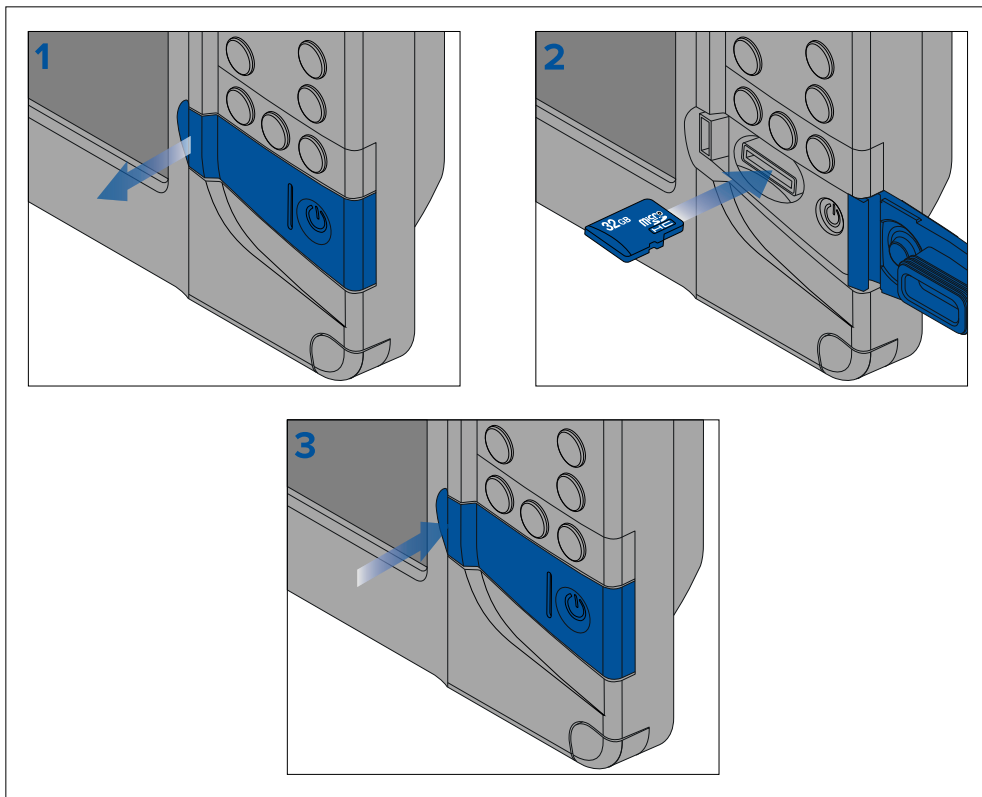
- **Speed class rating** — For best performance it is recommended that you use Class 10 or UHS (Ultra High Speed) class memory cards, or better.
- **Use branded memory cards** — When archiving data it is recommended that you use good quality branded memory cards.

Removing MicroSD card from its adaptor

MicroSD memory and cartography chart cards are usually supplied inserted into an SD card adaptor. The card will need to be removed from the adaptor before inserting into your display.



Inserting a MicroSD card



1. Open the card reader door.
2. Ensuring correct orientation (contacts facing down), insert the MicroSD card into the card reader slot.
3. Close the card reader door, ensuring that the edges of the door are flush.

Removing the MicroSD card

1. Press the **Power** button.
The **Shortcuts** menu is displayed.



2. Select **Eject SD card**.
3. Open the card reader door.
4. Remove the MicroSD card from the Rear of the MFD.
5. Close the card reader door.
6. Select **OK** on the confirmation dialog.

Caution: Ensure card reader cover or door is securely closed

To prevent water ingress and consequent damage to the product, ensure that the card reader door or cover is firmly closed.

2.5 Data sources menu

When a network / system includes multiple sources of the same data type, such as GPS / GNSS position data, the display will choose the most appropriate source for the data. If you prefer, you can manually select your own source for the data.

The **Data sources** menu can be accessed from the **Settings** menu: **Homescreen > Settings > This display > Data sources**.

Data sources					
Depth	Speed through water	GPS	GPS datum	Wind	
Preferred	Source device	Value in use	Serial num	Port ID	Manual selection <input type="checkbox"/> To select a preferred source for this type of data, activate "manual selection" and tick your preferred source.
<input type="checkbox"/>	Raymarine Element 9 HV		0190048	Internal	
<input checked="" type="checkbox"/>	Raymarine RS-150	+/- 0.35nm	1260393	Internal	
<input type="checkbox"/>	Internal GPS		0190026	Unknown	

Each tab in the data sources menu enables you to view and select your preferred data source for that type of data. The currently active data source will display its current 'value in use'. By default data sources are selected automatically and the source for the data may change depending on conditions.

With the **Manual selection** toggle enabled, you can manually assign your preferred source for the data. Manually selected data sources will not change.