

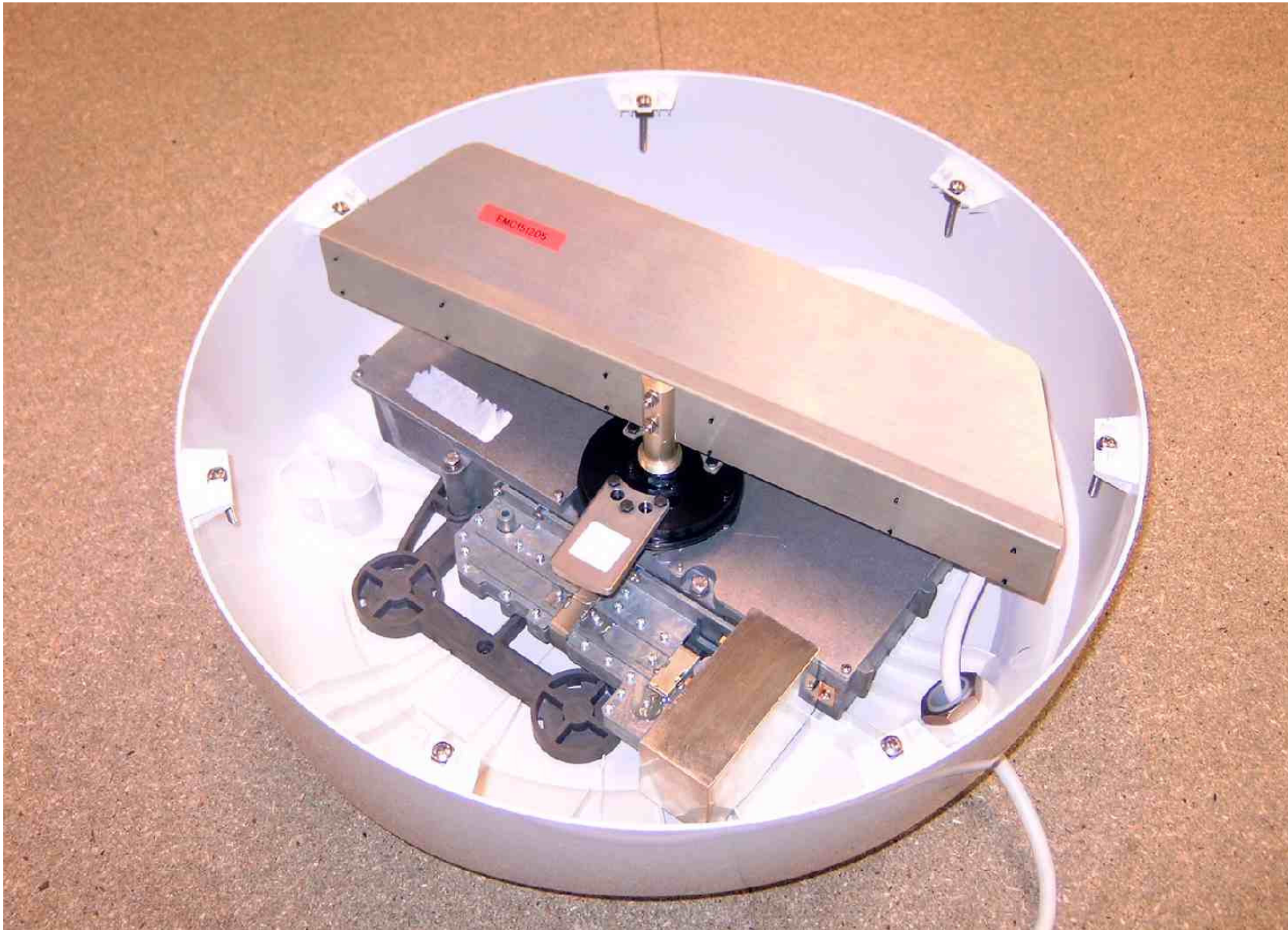


**RD218 2kW 18" Radome Scanner**

**Internal Photographs**

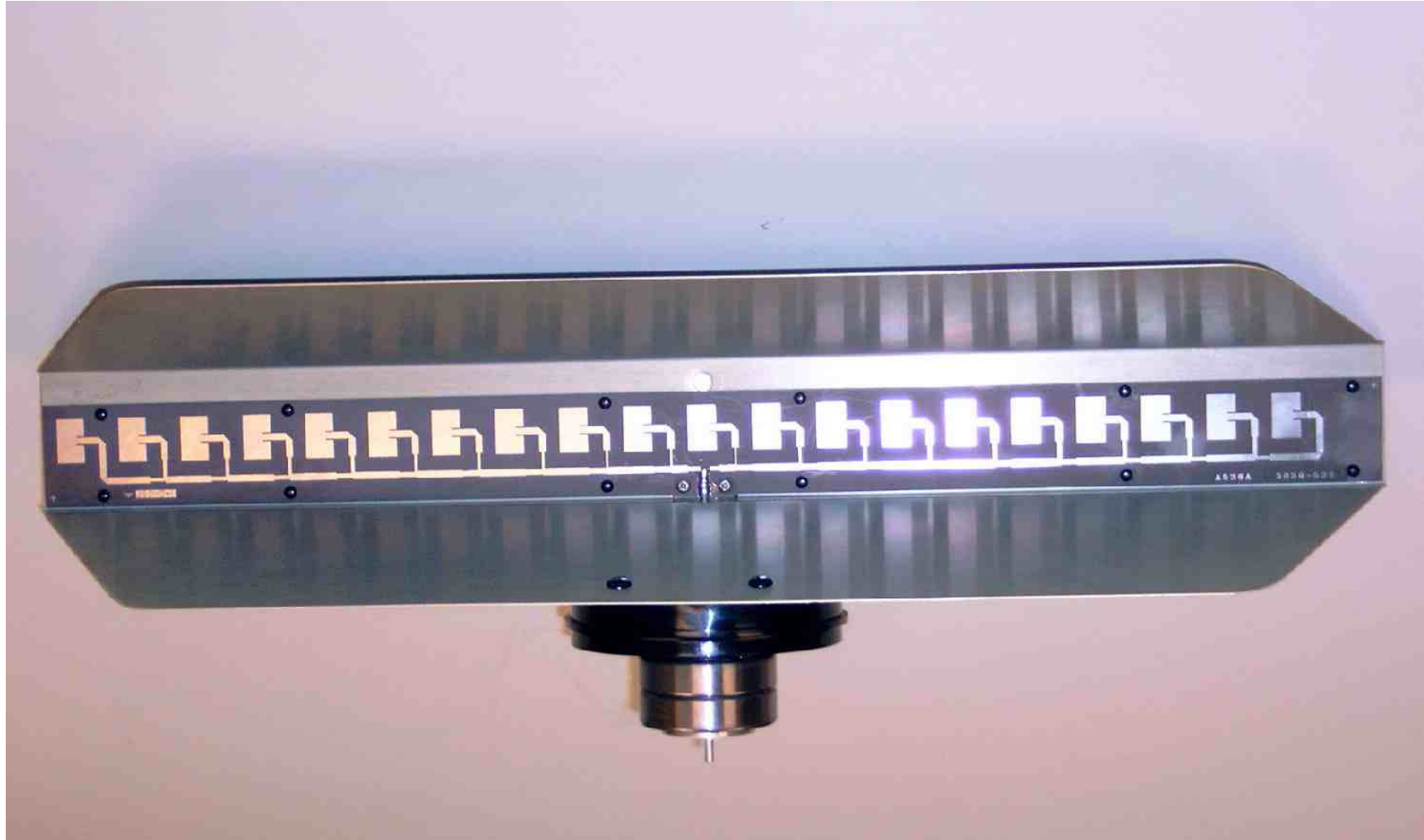
## INDEX

| <b>Page No.</b> | <b>Description</b>  |
|-----------------|---|
| <b>3</b>        | <b>Top cover removed; showing rear view of antenna</b>                  |
| <b>4</b>        | <b>18" antenna and rotating joint; front view</b>                       |
| <b>5</b>        | <b>View showing circulator and magnetron screening box</b>              |
| <b>6</b>        | <b>Core with cable termination cover plate removed</b>                  |
| <b>7</b>        | <b>Core with Modulator/PSU assembly cover plate removed</b>             |
| <b>8</b>        | <b>Core with I.F. amplifier PCB cover plate removed</b>                 |
| <b>9</b>        | <b>Core with Magnetron screening box removed</b>                        |
| <b>10</b>       | <b>Core with I.F. Amplifier PCB removed</b>                             |
| <b>11</b>       | <b>Core with I.F. Amplifier PCB and Modulator/PSU assembly removed.</b> |
| <b>12</b>       | <b>Core underside showing LNC cover, magnetron and circulator</b>       |
| <b>13</b>       | <b>Core underside with LNC cover removed</b>                            |
| <b>14</b>       | <b>LNC PCB underside</b>  |
| <b>15</b>       | <b>LNC PCB top (component) side with screening can removed</b>          |
| <b>16</b>       | <b>I.F. PCB Assembly top (component) side</b>                           |
| <b>17</b>       | <b>I.F. PCB Assembly underside</b>                                      |
| <b>18</b>       | <b>Modulator/PSU Assembly top (component) side</b>                      |
| <b>19</b>       | <b>Modulator/PSU Assembly underside</b>                                 |



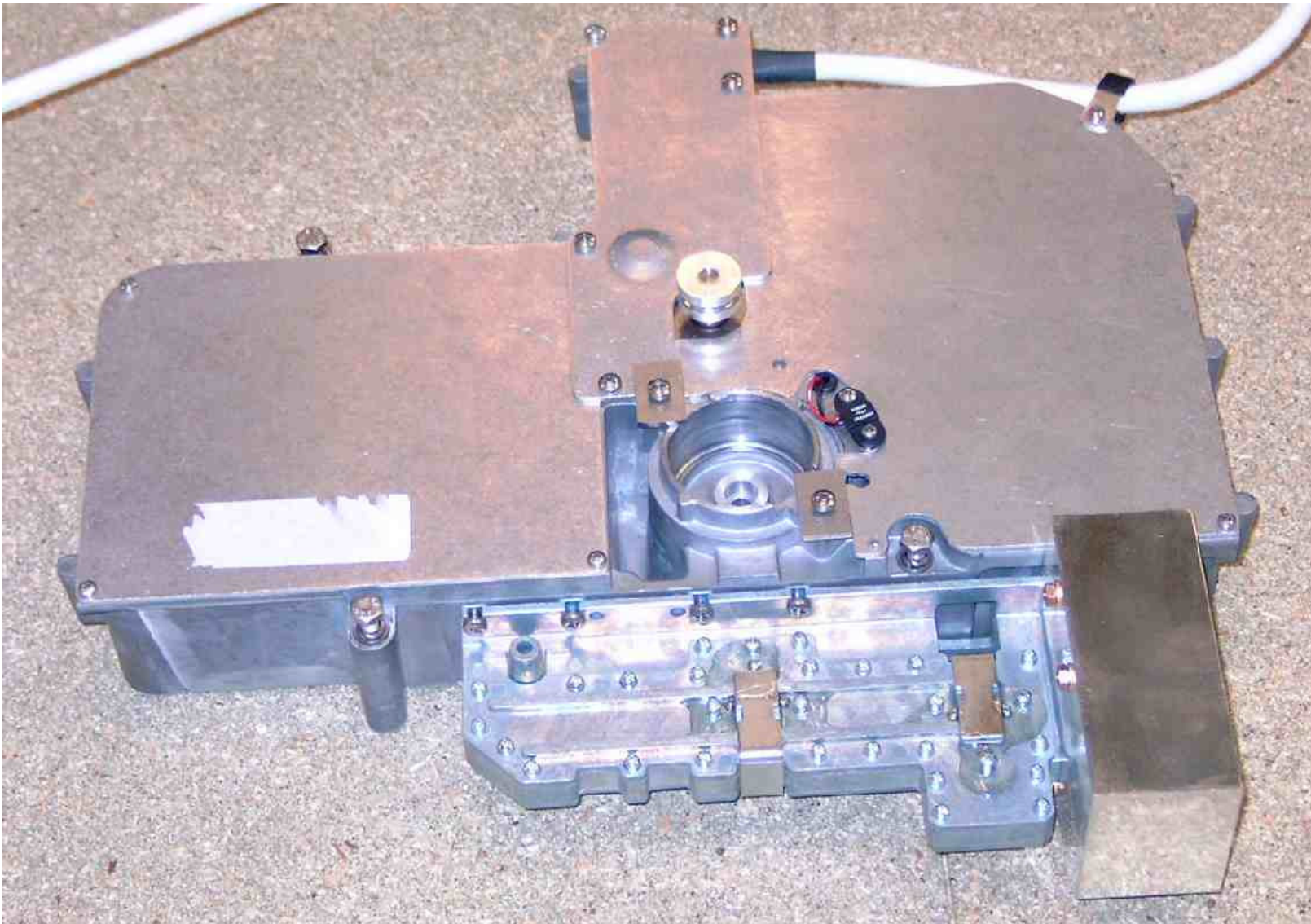
**RD218 2kW 18" Radome Scanner**

**Top cover removed; showing rear view of antenna**



**RD218 2kW 18" Radome Scanner**

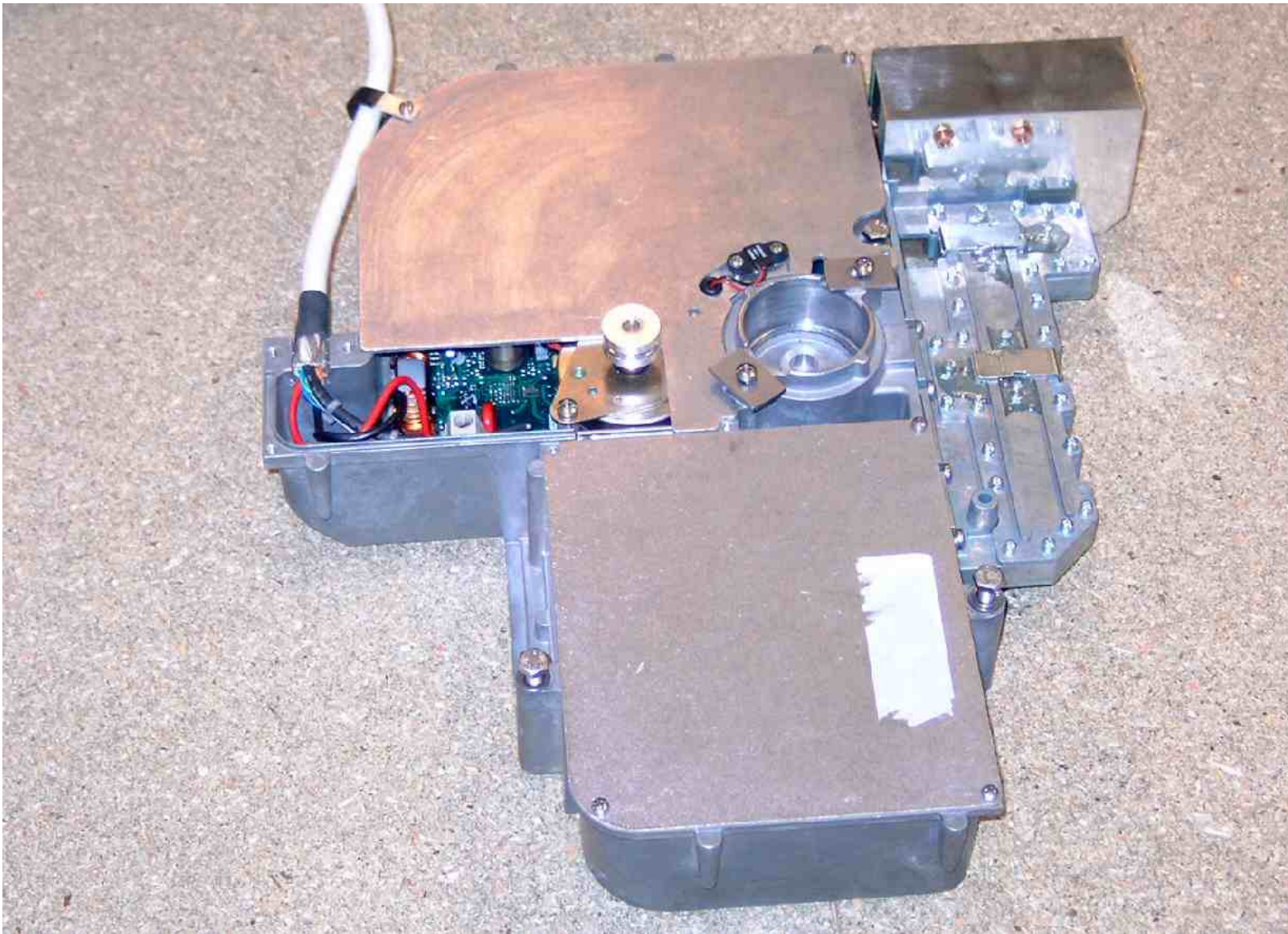
**18" antenna and rotating joint; front view**



**RD218 2kW 18" Radome Scanner**

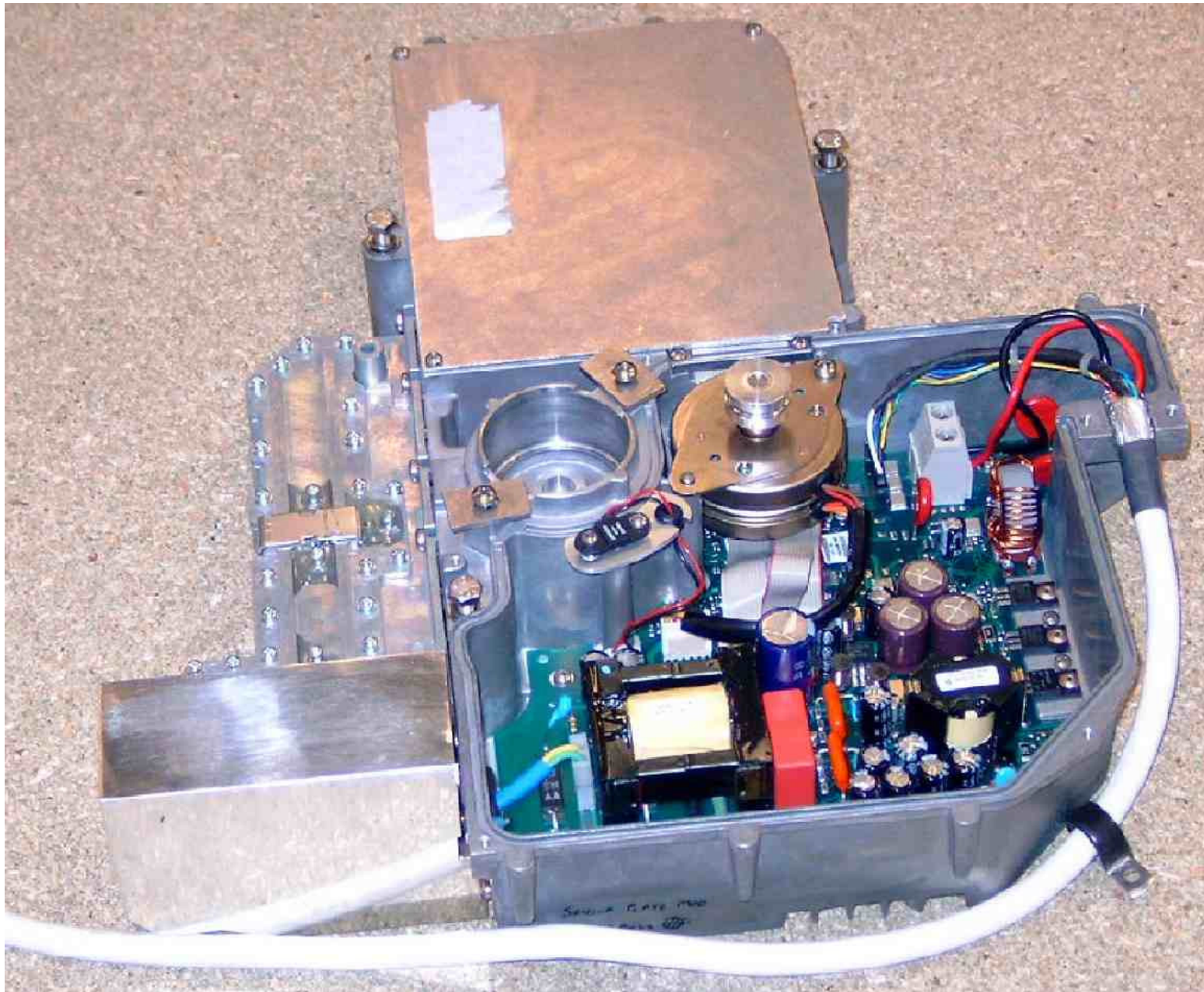
**Core removed from radome; antenna removed. View showing circulator and magnetron screening box.**





**RD218 2kW 18'' Radome Scanner**

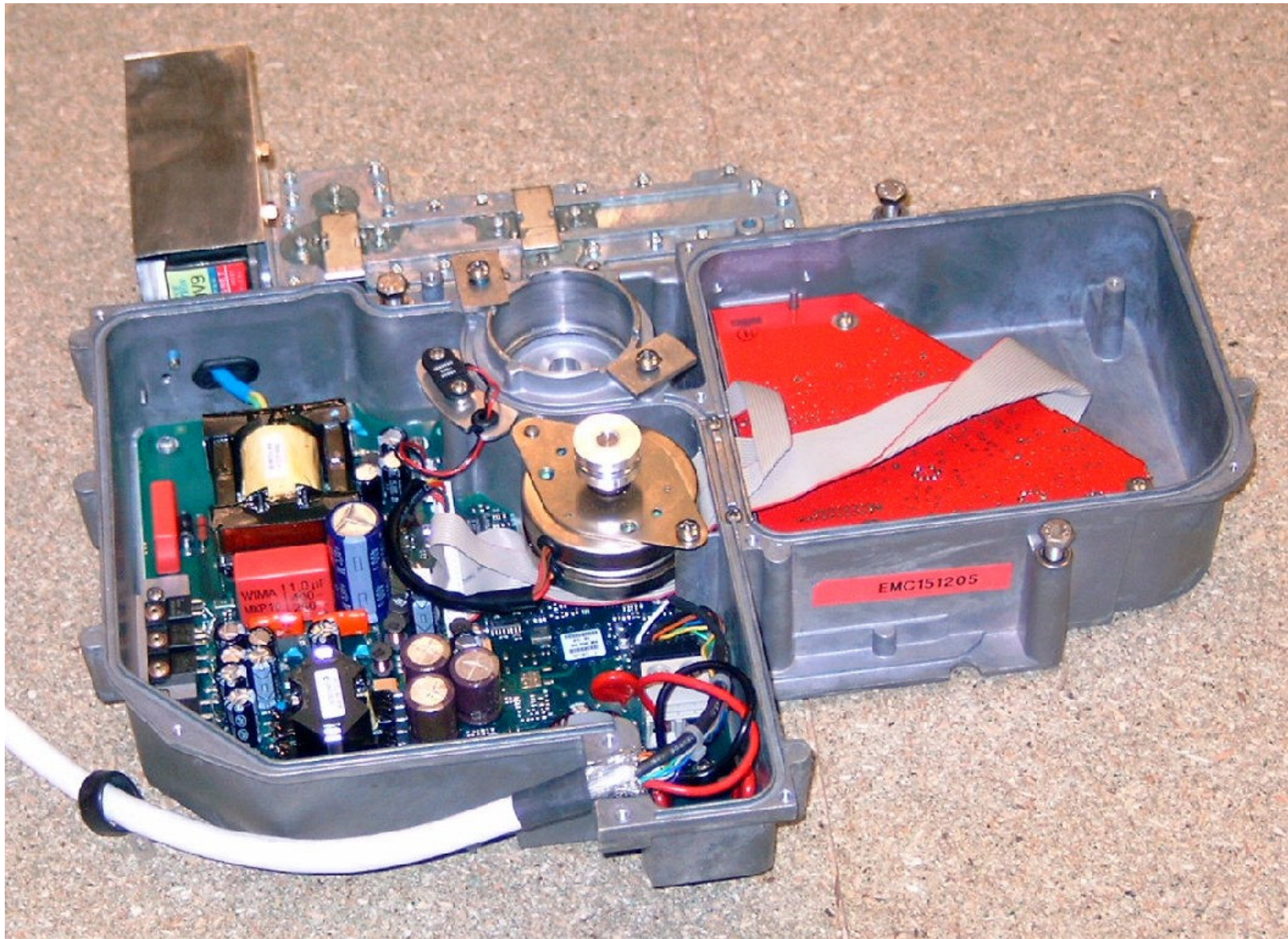
**Cable termination cover plate removed**



**RD218 2kW 18" Radome Scanner**

**Modulator/PSU assembly cover plate removed**

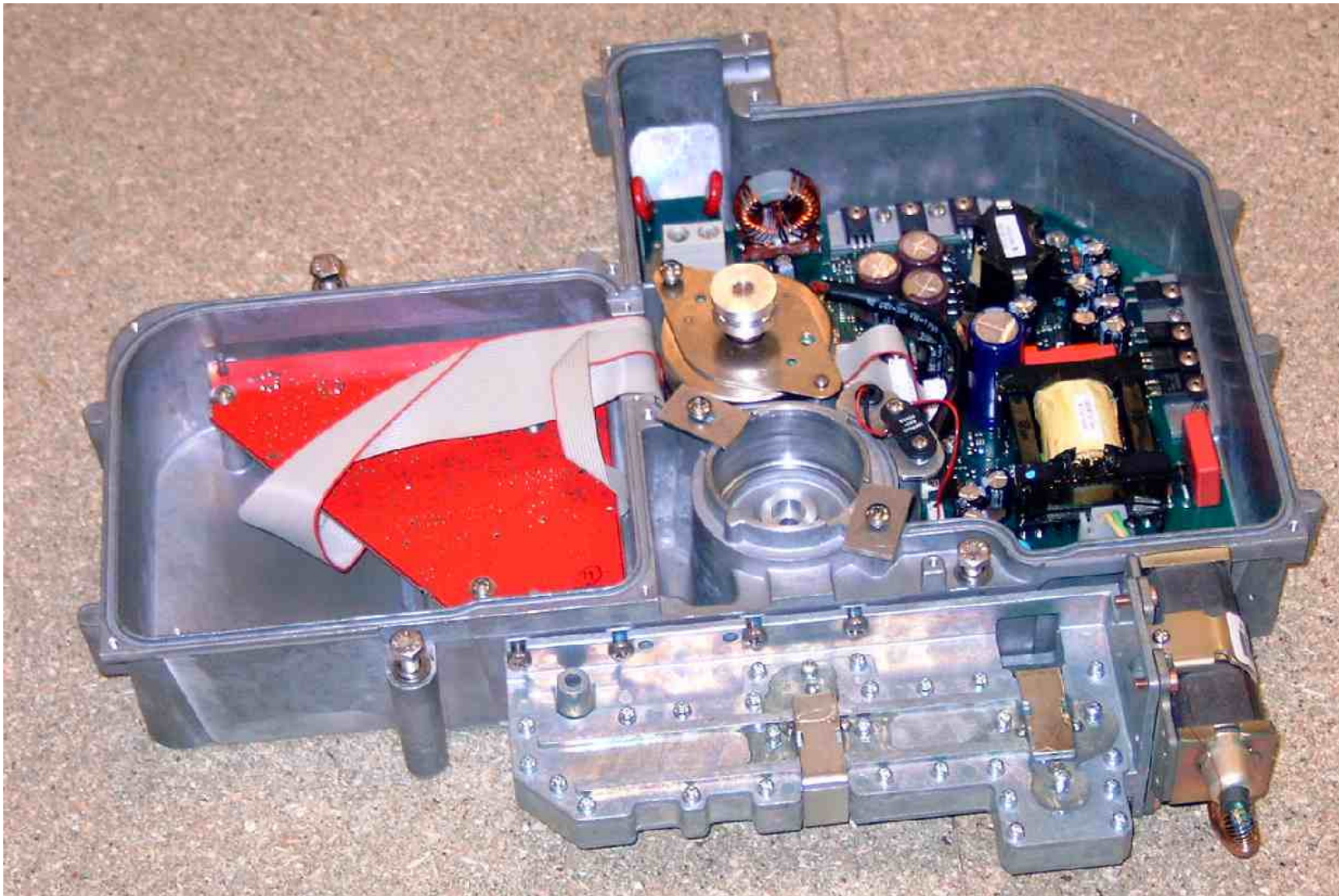




**RD218 2kW 18" Radome Scanner**

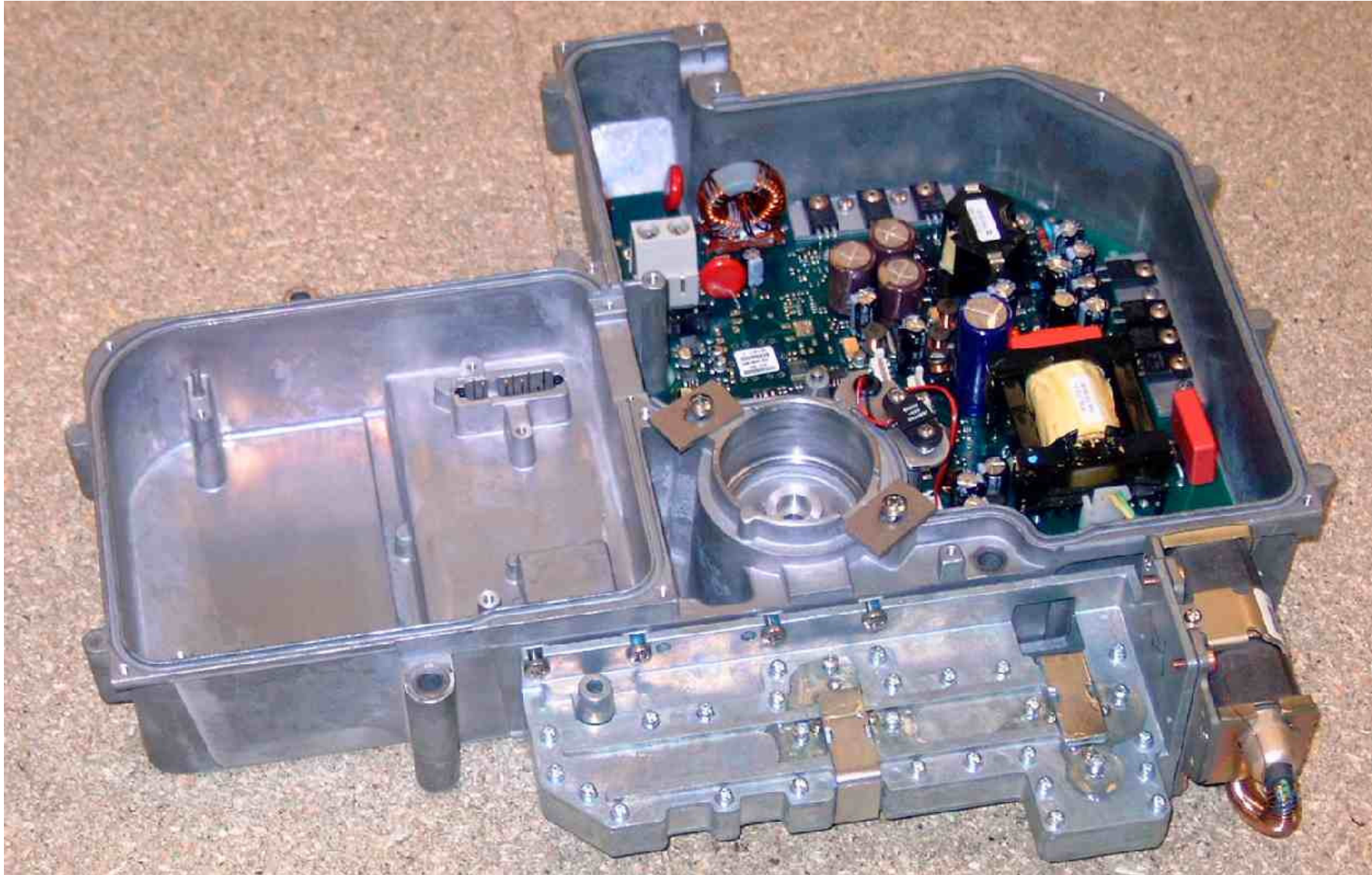
**I.F. amplifier PCB cover plate removed**





**RD218 2kW 18'' Radome Scanner**

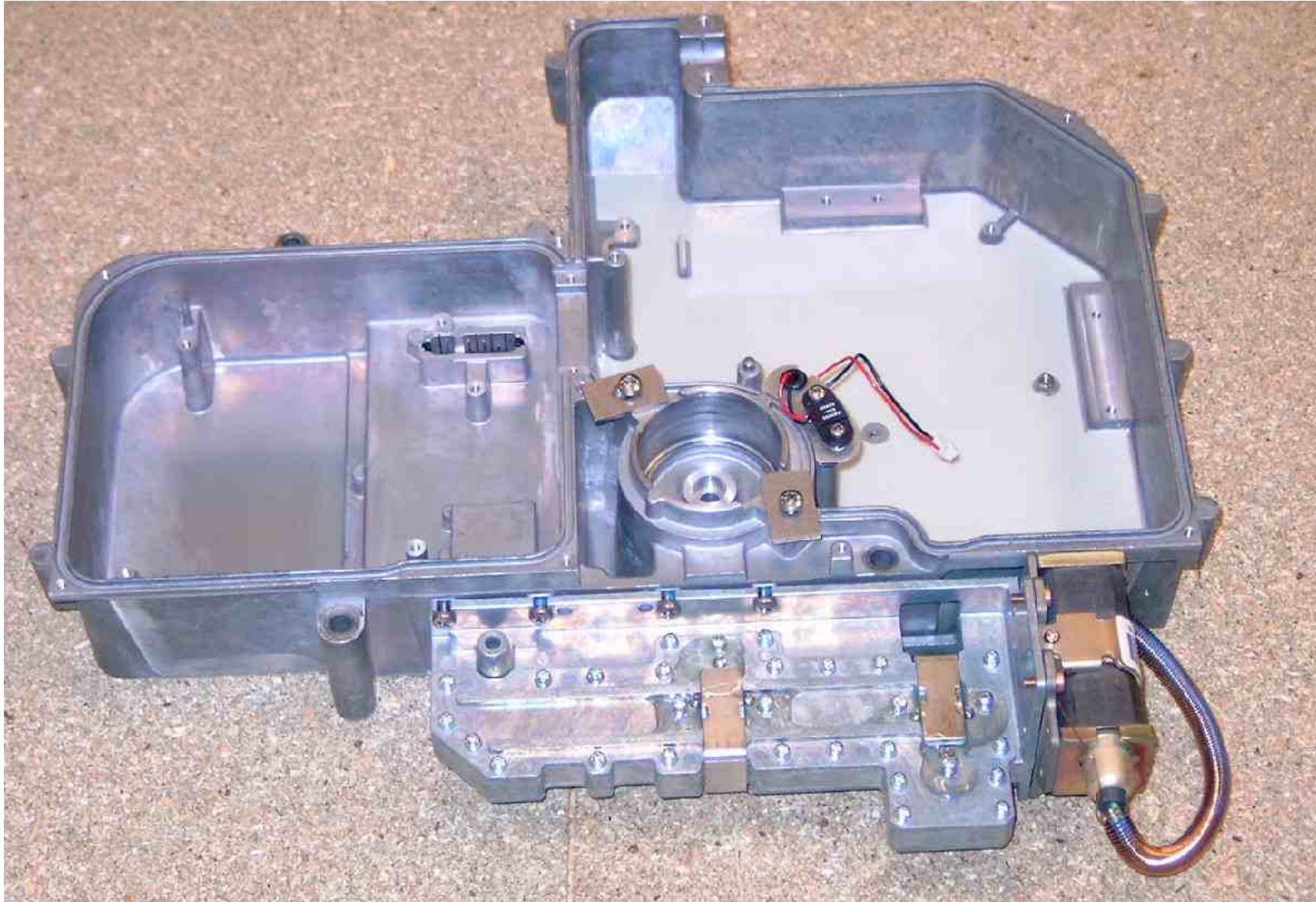
**Magnetron screening box removed**



**RD218 2kW 18" Radome Scanner**

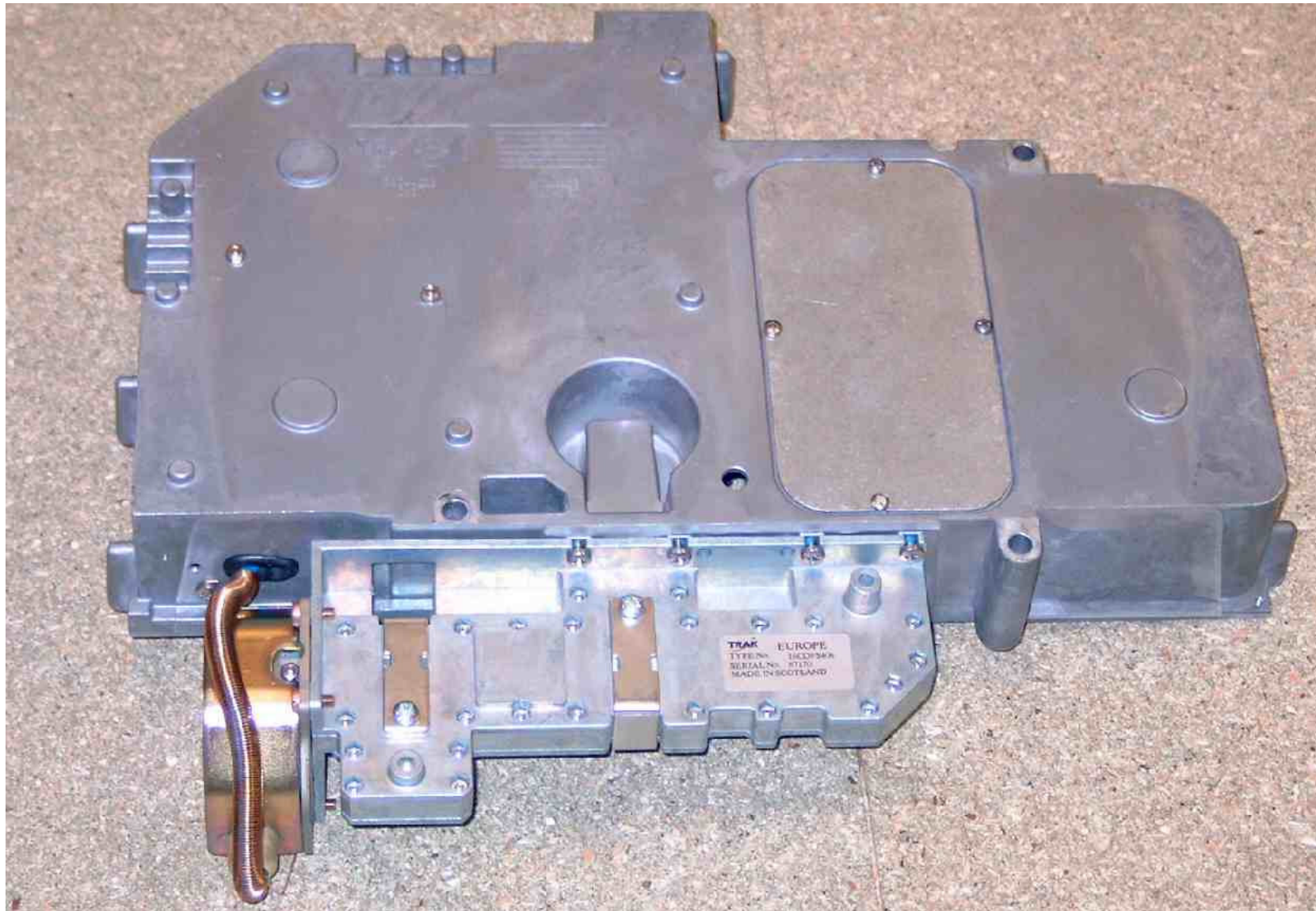
**Core with I.F. Amplifier PCB removed**





**RD218 2kW 18" Radome Scanner**

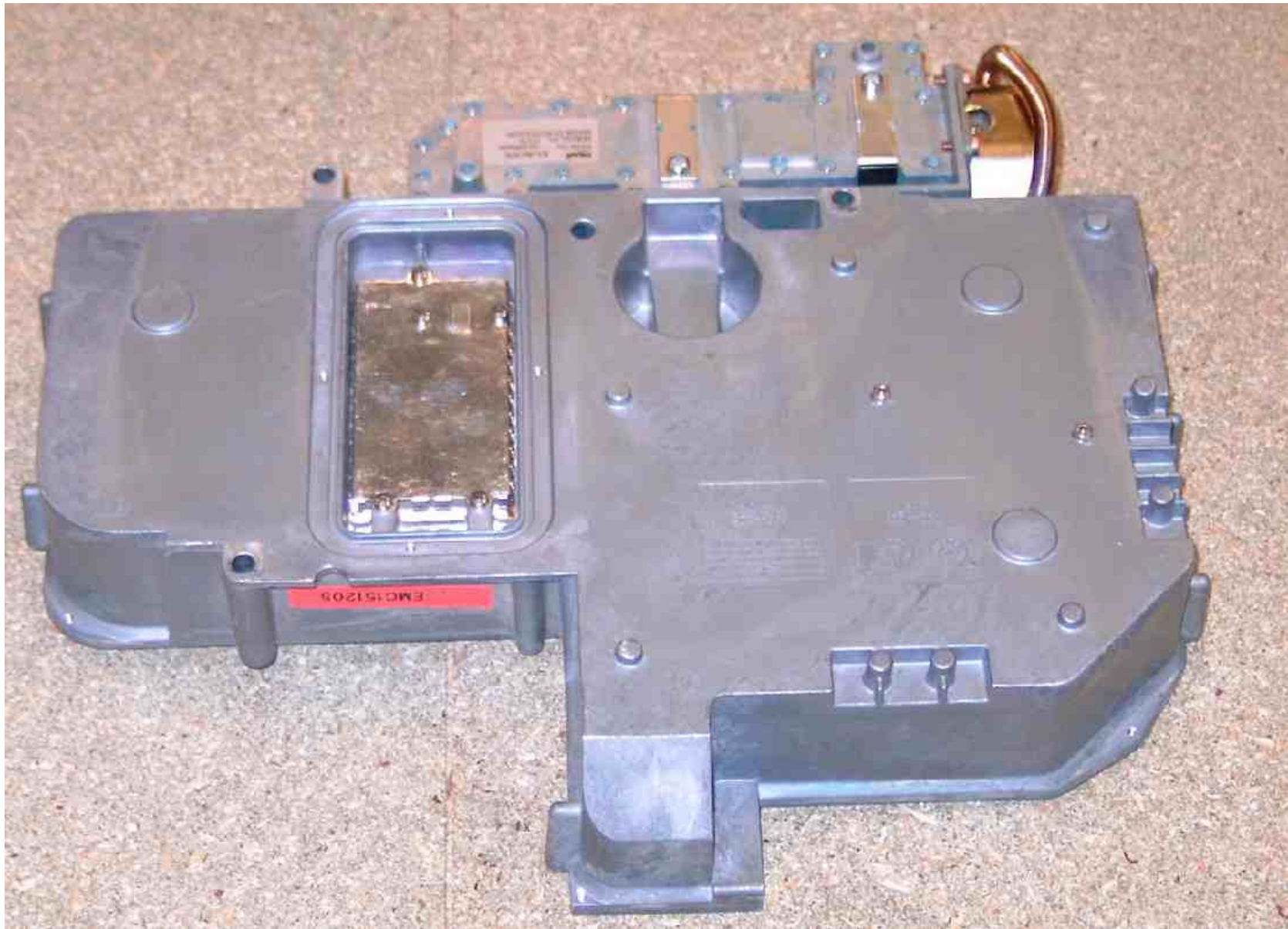
**Core with I.F. Amplifier PCB, Modulator/PSU assembly and Motor removed. Heading Marker sensor remains.**



**RD218 2kW 18'' Radome Scanner**

**Core underside showing LNC cover, magnetron and circulator**



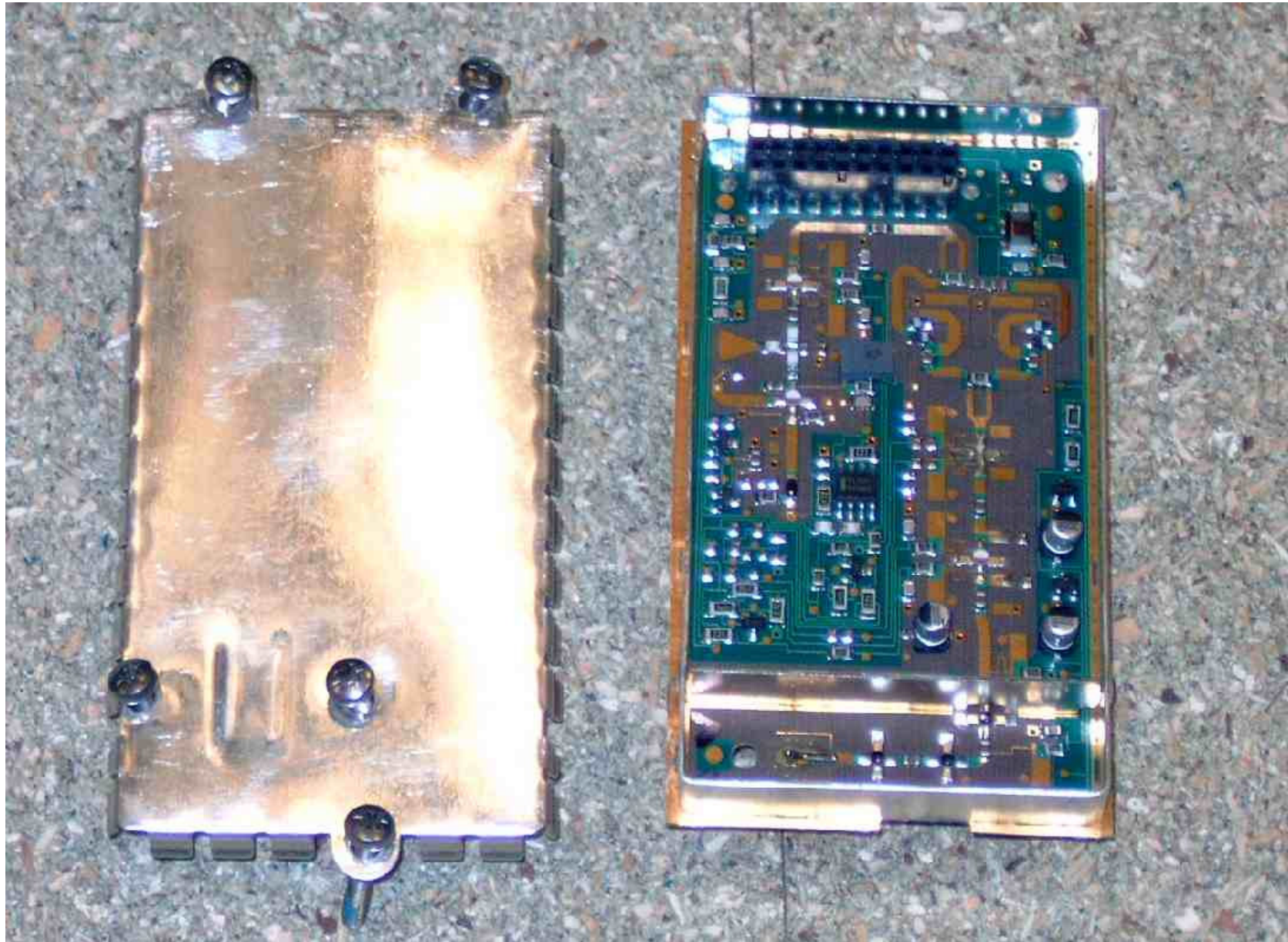


**RD218 2kW 18" Radome Scanner**

**Core underside with LNC cover removed**







**RD218 2kW 18" Radome Scanner**

**LNC PCB top (component) side with screening can removed**  
**Page 15 of 19**





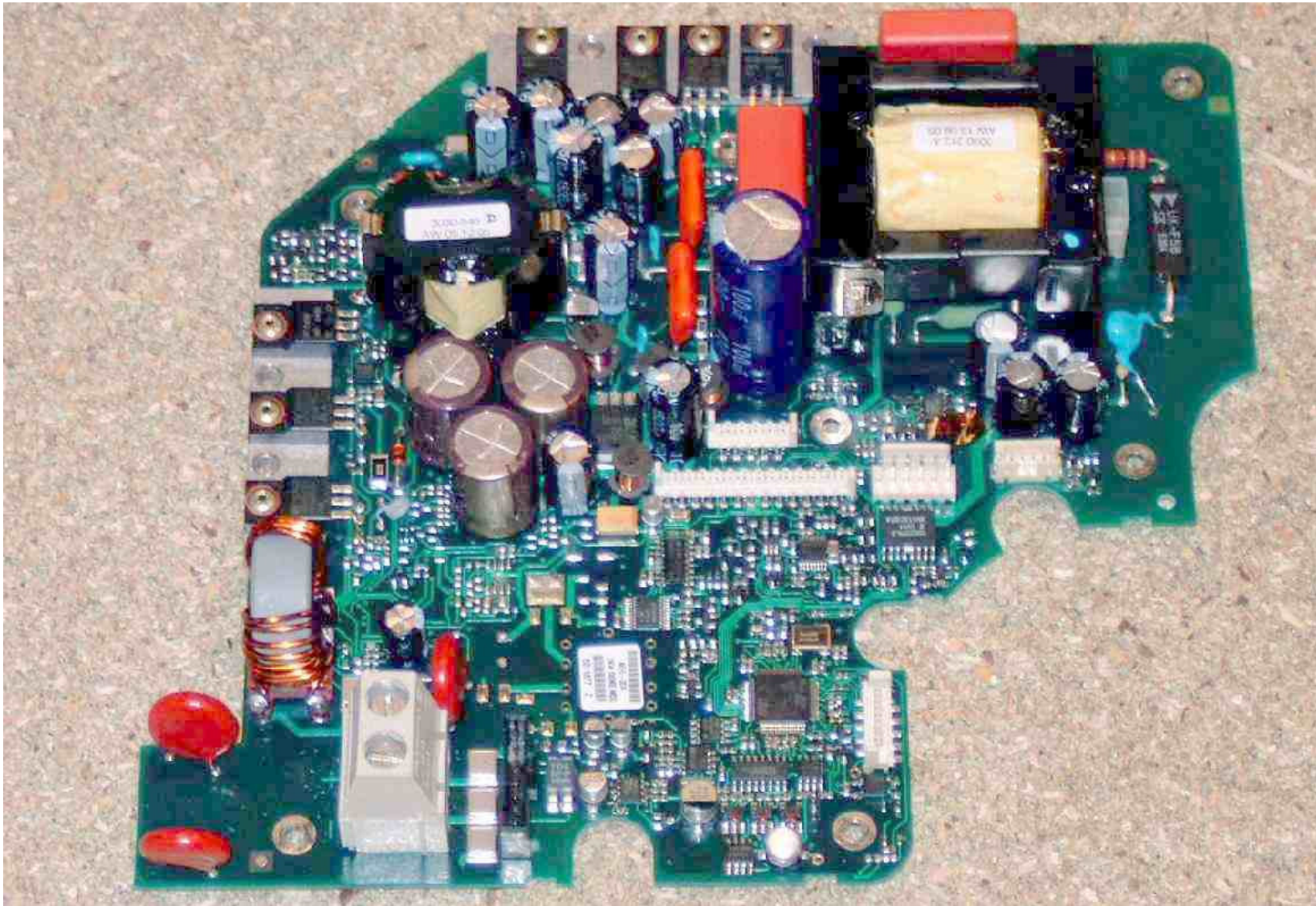
**RD218 2kW 18" Radome Scanner**

**I.F. PCB Assembly top (component) side**





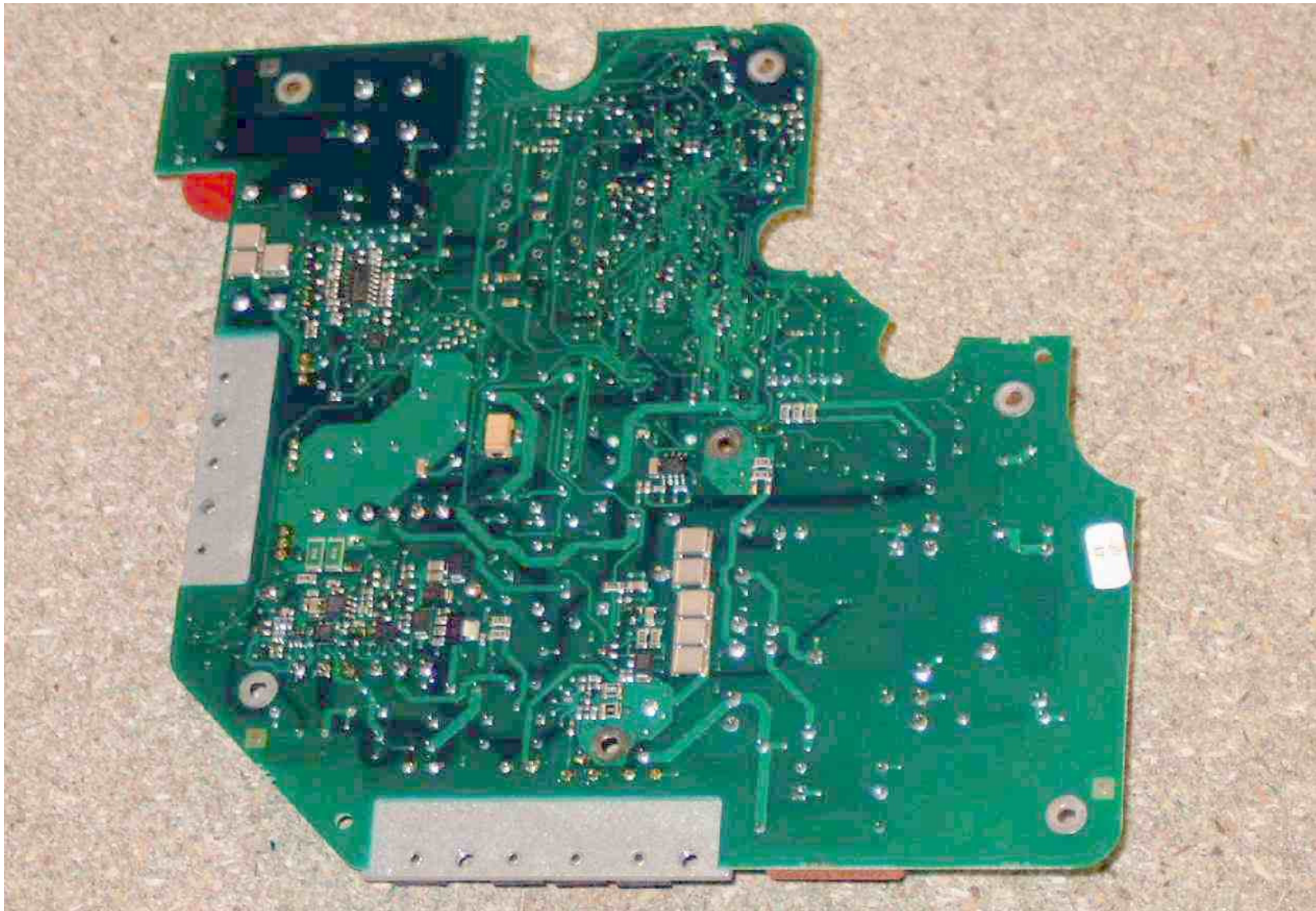




**RD218 2kW 18" Radome Scanner**

**Modulator/PSU Assembly top (component) side**





**RD218 2kW 18" Radome Scanner**

**Modulator/PSU Assembly underside**