

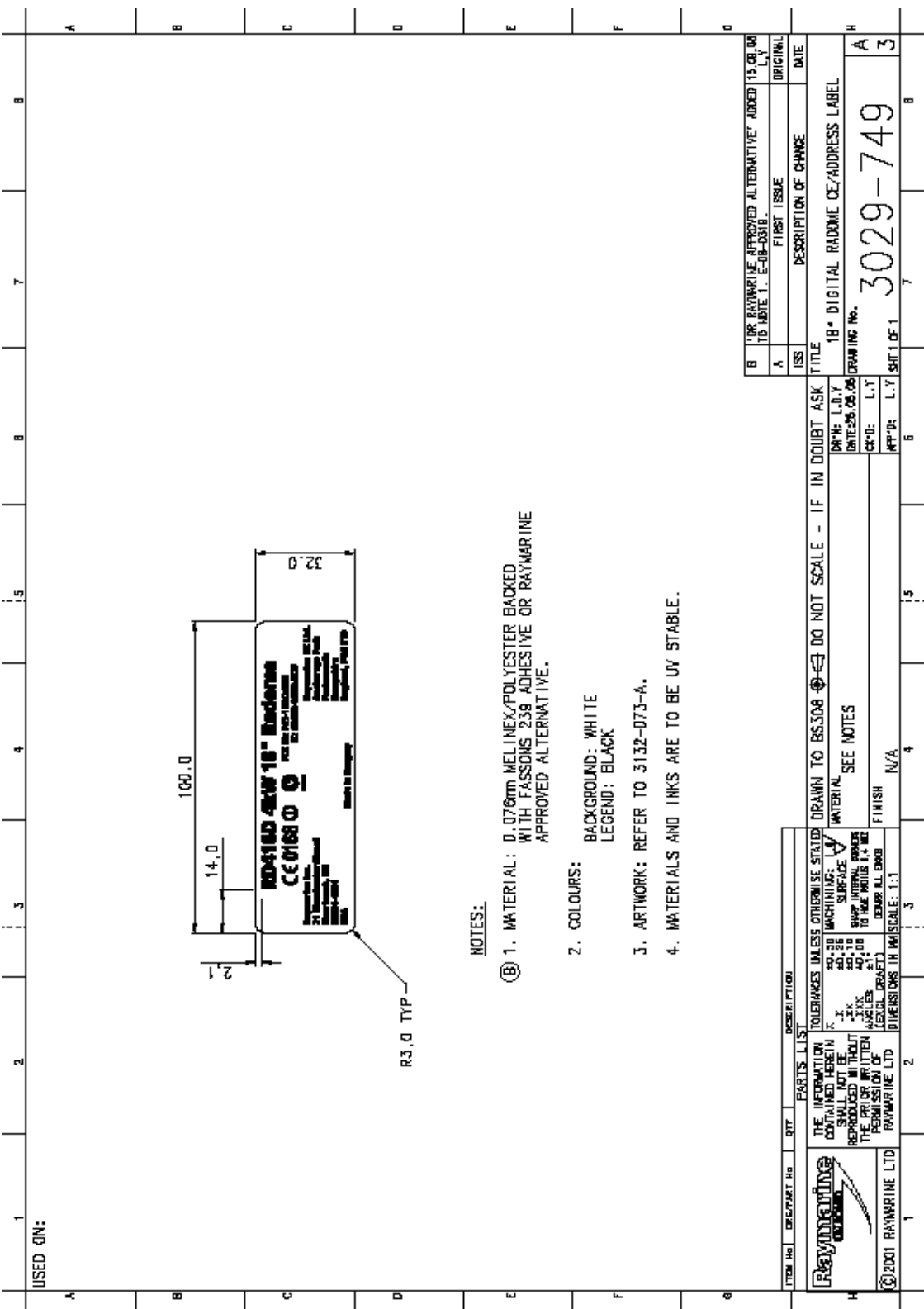


RD418D 4kW 18" Digital Radome Scanner

Product and Packaging Labels

INDEX

| Page No. | Description |
|----------|---------------------------------------------------------------------------------------------------------------------------------------------------------------|
| 3 | Drawing of Product Approvals Label |
| 4 | Drawing of Voltage/Current Rating & HV Warning Label |
| 5 | E92129 - Facsimile of external packaging label |
| 6 | E92130 - Facsimile of external packaging label |
| 7 | Photograph of prototype serialised label set (for RD424D) |
| 8 | Photograph of Product Approvals Label |
| 9 | View of radome lower casing sidewall showing Product Approvals Label and Voltage/Current Rating Label in situ, with part number/serial number label in place. |
| 10 | View of scanner core assembly showing position of Part No. & barcoded serial number label on Modulator/PSU cover. |

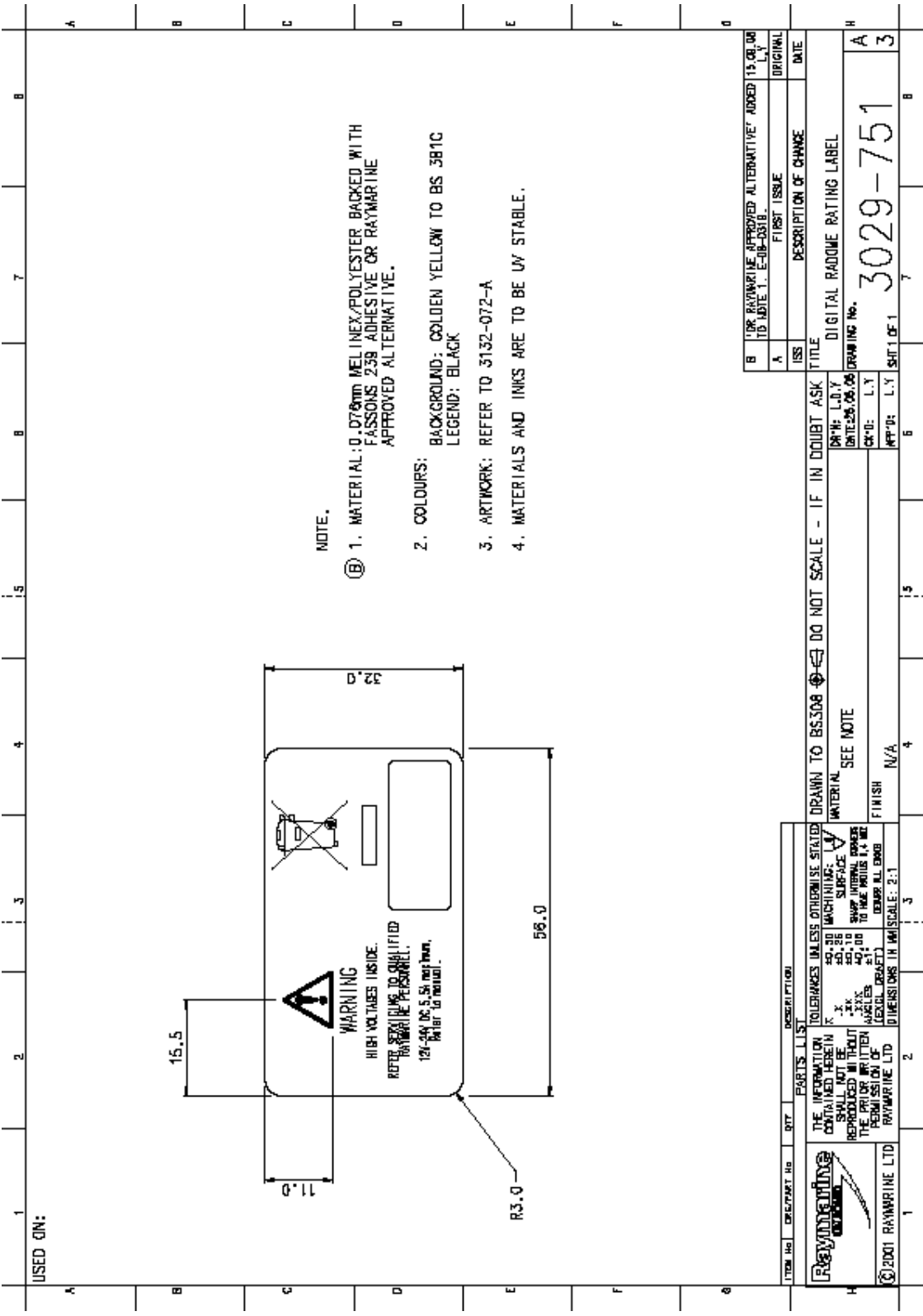


- NOTES:**
1. MATERIAL: 0.076mm MELINEX/POLYESTER BACKED WITH FASSONS 238 ADHESIVE OR RAYMARINE APPROVED ALTERNATIVE.
 2. COLOURS: BACKGROUND: WHITE
LEGEND: BLACK
 3. ARTWORK: REFER TO 3132-073-A.
 4. MATERIALS AND INKS ARE TO BE UV STABLE.

| ITEM NO | DESPART NO | QTY | DESCRIPTION |
|---------|------------|-----|-----------------------------------------------------------------------------------------------------------------------------------------|
| 1 | | | <p>Raymarine CONTROL</p> <p>RD-1160 18" Backplane Part No: RD-1160 18" x 32" (457mm x 813mm) Made in Germany</p> |
| 2 | | | <p>RD-1160 18" Backplane Part No: RD-1160 18" x 32" (457mm x 813mm) Made in Germany</p> |
| 3 | | | <p>RD-1160 18" Backplane Part No: RD-1160 18" x 32" (457mm x 813mm) Made in Germany</p> |
| 4 | | | <p>RD-1160 18" Backplane Part No: RD-1160 18" x 32" (457mm x 813mm) Made in Germany</p> |

| | | | |
|------------------------------------------------------------------------------------------------------------------------------|----------------------------------------------------------------------------------------------------------------------------------------|----------------------------------------------------|--------------------------------------------------------------------|
| TOLERANCES UNLESS OTHERWISE STATED FINISH N/A | | DRAWN TO BS.508 ☺ IF IN DOUBT ASK | |
| THE INFORMATION CONTAINED HEREIN SHALL NOT BE REPRODUCED IN WHOLE OR IN PART WITHOUT THE WRITTEN PERMISSION OF RAYMARINE LTD | MACHINING: LA SURFACE: V SHIP INTERNAL DIMENSIONS TO FACE UNLESS OTHERWISE SPECIFIED DIMENSIONS TO UNLESS OTHERWISE SPECIFIED | DATE: 26.09.08 DATE: 26.09.08 DATE: 26.09.08 | TITLE: 18" DIGITAL RADOME CE/ADDRESS LABEL DRAWING No. 3029-749 |
| RAYMARINE LTD RAYMARINE LTD | FINISH N/A | DATE: 26.09.08 DATE: 26.09.08 DATE: 26.09.08 | SHEET 1 OF 1 SHEET 1 OF 1 |

| | |
|----------------------------------------------------------------------------|----------------|
| B 'OR RAYMARINE APPROVED ALTERNATIVE' ADDED TO NOTE 1. E-08-0318. ORIGINAL | DATE: 15.09.08 |
| A FIRST ISSUE | DATE: |
| ISS DESCRIPTION OF CHANGE | DATE: |



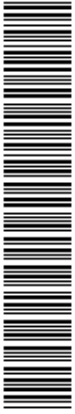
NOTE.

- ① MATERIAL: 0.075mm MELINEX/POLYESTER BACKED WITH FASSONS 239 ADHESIVE OR RAYMARINE APPROVED ALTERNATIVE.
- 2. COLOURS: BACKGROUND: GOLDEN YELLOW TO BS 381C LEGEND: BLACK
- 3. ARTWORK: REFER TO 3132-072-A
- 4. MATERIALS AND INKS ARE TO BE UV STABLE.

| | | | | |
|---------|------------|-----|---------------|--------------------------------------------------------------------------------------------------------------------------------------------------------------------|
| ITEM NO | DESPART NO | QTY | PARTS LIST | DESCRIPTION |
| 1 | | | RAYMARINE LTD | THE INFORMATION CONTAINED HEREIN SHALL NOT BE REPRODUCED IN WHOLE OR IN PART WITHOUT THE WRITTEN PERMISSION OF RAYMARINE LTD |
| 2 | | | RAYMARINE LTD | TOLERANCES UNLESS OTHERWISE STATED: 20-30 MACHINING: ±0.25 SURFACE FINISH: SWAP INTERNAL DIMENSIONS TO THE PAGES 1 & 2 (EXCL GRABET) DIMENSIONS IN THIS SCALE: 2:1 |
| 3 | | | RAYMARINE LTD | DO NOT SCALE - IF IN DOUBT ASK |
| 4 | | | RAYMARINE LTD | FINISH IV/A |
| 5 | | | RAYMARINE LTD | INTERNAL SEE NOTE |
| 6 | | | RAYMARINE LTD | DRAWN TO BS.508 |
| 7 | | | RAYMARINE LTD | DATE: 25.09.08 |
| 8 | | | RAYMARINE LTD | CHK'D: L.Y |
| 9 | | | RAYMARINE LTD | DATE: 25.09.08 |
| 10 | | | RAYMARINE LTD | DATE: 25.09.08 |
| 11 | | | RAYMARINE LTD | DATE: 25.09.08 |
| 12 | | | RAYMARINE LTD | DATE: 25.09.08 |
| 13 | | | RAYMARINE LTD | DATE: 25.09.08 |
| 14 | | | RAYMARINE LTD | DATE: 25.09.08 |
| 15 | | | RAYMARINE LTD | DATE: 25.09.08 |
| 16 | | | RAYMARINE LTD | DATE: 25.09.08 |
| 17 | | | RAYMARINE LTD | DATE: 25.09.08 |
| 18 | | | RAYMARINE LTD | DATE: 25.09.08 |
| 19 | | | RAYMARINE LTD | DATE: 25.09.08 |
| 20 | | | RAYMARINE LTD | DATE: 25.09.08 |
| 21 | | | RAYMARINE LTD | DATE: 25.09.08 |
| 22 | | | RAYMARINE LTD | DATE: 25.09.08 |
| 23 | | | RAYMARINE LTD | DATE: 25.09.08 |
| 24 | | | RAYMARINE LTD | DATE: 25.09.08 |
| 25 | | | RAYMARINE LTD | DATE: 25.09.08 |
| 26 | | | RAYMARINE LTD | DATE: 25.09.08 |
| 27 | | | RAYMARINE LTD | DATE: 25.09.08 |
| 28 | | | RAYMARINE LTD | DATE: 25.09.08 |
| 29 | | | RAYMARINE LTD | DATE: 25.09.08 |
| 30 | | | RAYMARINE LTD | DATE: 25.09.08 |
| 31 | | | RAYMARINE LTD | DATE: 25.09.08 |
| 32 | | | RAYMARINE LTD | DATE: 25.09.08 |
| 33 | | | RAYMARINE LTD | DATE: 25.09.08 |
| 34 | | | RAYMARINE LTD | DATE: 25.09.08 |
| 35 | | | RAYMARINE LTD | DATE: 25.09.08 |
| 36 | | | RAYMARINE LTD | DATE: 25.09.08 |
| 37 | | | RAYMARINE LTD | DATE: 25.09.08 |
| 38 | | | RAYMARINE LTD | DATE: 25.09.08 |
| 39 | | | RAYMARINE LTD | DATE: 25.09.08 |
| 40 | | | RAYMARINE LTD | DATE: 25.09.08 |
| 41 | | | RAYMARINE LTD | DATE: 25.09.08 |
| 42 | | | RAYMARINE LTD | DATE: 25.09.08 |
| 43 | | | RAYMARINE LTD | DATE: 25.09.08 |
| 44 | | | RAYMARINE LTD | DATE: 25.09.08 |
| 45 | | | RAYMARINE LTD | DATE: 25.09.08 |
| 46 | | | RAYMARINE LTD | DATE: 25.09.08 |
| 47 | | | RAYMARINE LTD | DATE: 25.09.08 |
| 48 | | | RAYMARINE LTD | DATE: 25.09.08 |
| 49 | | | RAYMARINE LTD | DATE: 25.09.08 |
| 50 | | | RAYMARINE LTD | DATE: 25.09.08 |
| 51 | | | RAYMARINE LTD | DATE: 25.09.08 |
| 52 | | | RAYMARINE LTD | DATE: 25.09.08 |
| 53 | | | RAYMARINE LTD | DATE: 25.09.08 |
| 54 | | | RAYMARINE LTD | DATE: 25.09.08 |
| 55 | | | RAYMARINE LTD | DATE: 25.09.08 |
| 56 | | | RAYMARINE LTD | DATE: 25.09.08 |
| 57 | | | RAYMARINE LTD | DATE: 25.09.08 |
| 58 | | | RAYMARINE LTD | DATE: 25.09.08 |
| 59 | | | RAYMARINE LTD | DATE: 25.09.08 |
| 60 | | | RAYMARINE LTD | DATE: 25.09.08 |
| 61 | | | RAYMARINE LTD | DATE: 25.09.08 |
| 62 | | | RAYMARINE LTD | DATE: 25.09.08 |
| 63 | | | RAYMARINE LTD | DATE: 25.09.08 |
| 64 | | | RAYMARINE LTD | DATE: 25.09.08 |
| 65 | | | RAYMARINE LTD | DATE: 25.09.08 |
| 66 | | | RAYMARINE LTD | DATE: 25.09.08 |
| 67 | | | RAYMARINE LTD | DATE: 25.09.08 |
| 68 | | | RAYMARINE LTD | DATE: 25.09.08 |
| 69 | | | RAYMARINE LTD | DATE: 25.09.08 |
| 70 | | | RAYMARINE LTD | DATE: 25.09.08 |
| 71 | | | RAYMARINE LTD | DATE: 25.09.08 |
| 72 | | | RAYMARINE LTD | DATE: 25.09.08 |
| 73 | | | RAYMARINE LTD | DATE: 25.09.08 |
| 74 | | | RAYMARINE LTD | DATE: 25.09.08 |
| 75 | | | RAYMARINE LTD | DATE: 25.09.08 |
| 76 | | | RAYMARINE LTD | DATE: 25.09.08 |
| 77 | | | RAYMARINE LTD | DATE: 25.09.08 |
| 78 | | | RAYMARINE LTD | DATE: 25.09.08 |
| 79 | | | RAYMARINE LTD | DATE: 25.09.08 |
| 80 | | | RAYMARINE LTD | DATE: 25.09.08 |
| 81 | | | RAYMARINE LTD | DATE: 25.09.08 |
| 82 | | | RAYMARINE LTD | DATE: 25.09.08 |
| 83 | | | RAYMARINE LTD | DATE: 25.09.08 |
| 84 | | | RAYMARINE LTD | DATE: 25.09.08 |
| 85 | | | RAYMARINE LTD | DATE: 25.09.08 |
| 86 | | | RAYMARINE LTD | DATE: 25.09.08 |
| 87 | | | RAYMARINE LTD | DATE: 25.09.08 |
| 88 | | | RAYMARINE LTD | DATE: 25.09.08 |
| 89 | | | RAYMARINE LTD | DATE: 25.09.08 |
| 90 | | | RAYMARINE LTD | DATE: 25.09.08 |
| 91 | | | RAYMARINE LTD | DATE: 25.09.08 |
| 92 | | | RAYMARINE LTD | DATE: 25.09.08 |
| 93 | | | RAYMARINE LTD | DATE: 25.09.08 |
| 94 | | | RAYMARINE LTD | DATE: 25.09.08 |
| 95 | | | RAYMARINE LTD | DATE: 25.09.08 |
| 96 | | | RAYMARINE LTD | DATE: 25.09.08 |
| 97 | | | RAYMARINE LTD | DATE: 25.09.08 |
| 98 | | | RAYMARINE LTD | DATE: 25.09.08 |
| 99 | | | RAYMARINE LTD | DATE: 25.09.08 |
| 100 | | | RAYMARINE LTD | DATE: 25.09.08 |

E92129
0980001

18" DIGITAL RADOME 10m CABLE



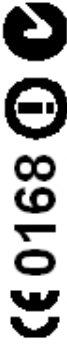
E921290980001

E92129



N116821

FCC ID: PJ5-18DD4KW
IC:4069B-18DD4KW



Facsimile of external packaging label for
E92129 - RD418D 18" Digital Radome Radar
with 10m cable.

18" DIGITAL RADOME 10m CABLE



* / AE921290980001 *



7 23193 92129 6

**Made in
Hungary**

Label size 81mm wide x 68mm high

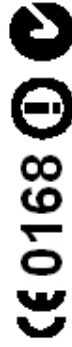
18" DIGITAL RADOME NO 10M CABLE

E92130
0980001



E921300980001

E92130



N16821

FCC ID: PJ5-18DD4KW

IC:4069B-18DD4KW

18" DIGITAL RADOME NO 10M CABLE



* / AE921300980001 *



7 23193 92130 2

**Made in
Hungary**

Facsimile of external packaging label for
E92130 - RD418D 18" Digital Radome Radar
with no cable.

Label size 81mm wide x 68mm high



These example labels are for E92131 - RD424D 4kW 24" Radome Radar with 10m cable. The layout is identical for both E92129 (RD418D with 10m cable) and E92130 (RD418D only). Note that the two large labels with the CE mark are prototypes. The final design of these labels, which are intended to be placed on the external surface of the packaging, is as shown on pages 5 and 6 of this document. The three barcode labels are included with the User Documentation and are used when servicing or repair is required to identify the product to the dealer. The smallest label is affixed to the ratings/warnings label on the outside of the product, as shown on page 9. The remaining small label is attached to the scanner core, as shown on page 10

RD418D 4kW 18" Radome

CE 0168 

Raymarine Inc.
21 Manchester Street
Merrimack, NH
03054-4801
USA



N16821

FCC ID: PJ5-18DD4KW
IC: 4069B-18DD4KW

Raymarine UK Ltd.
Anchorage Park
Portsmouth
Hampshire
England, PO3 5TD

Made in Hungary



RD418D 4kW 18" Radome

FCC ID: PJ5-18DD4KW
IC: 4069B-18DD4KW
Raymarine UK Ltd.
Anchorage Park
Portsmouth
Hampshire
England, PO3 5TD



CE 0168

Raymarine Inc.
21 Manchester Street
Merrimack, NH
03054-4801
USA

Made in Hungary


WARNING
HIGH VOLTAGES INSIDE.
REFER SERVICING TO QUALIFIED
RAYMARINE PERSONNEL.
12V-32V DC 4A maximum.
Refer to manual.



**E92129
0980046**

TLA3-18-1
DIGITAL

