

Report No.: 0607718
 Model No.: K6318
 Sample No.: 1/3



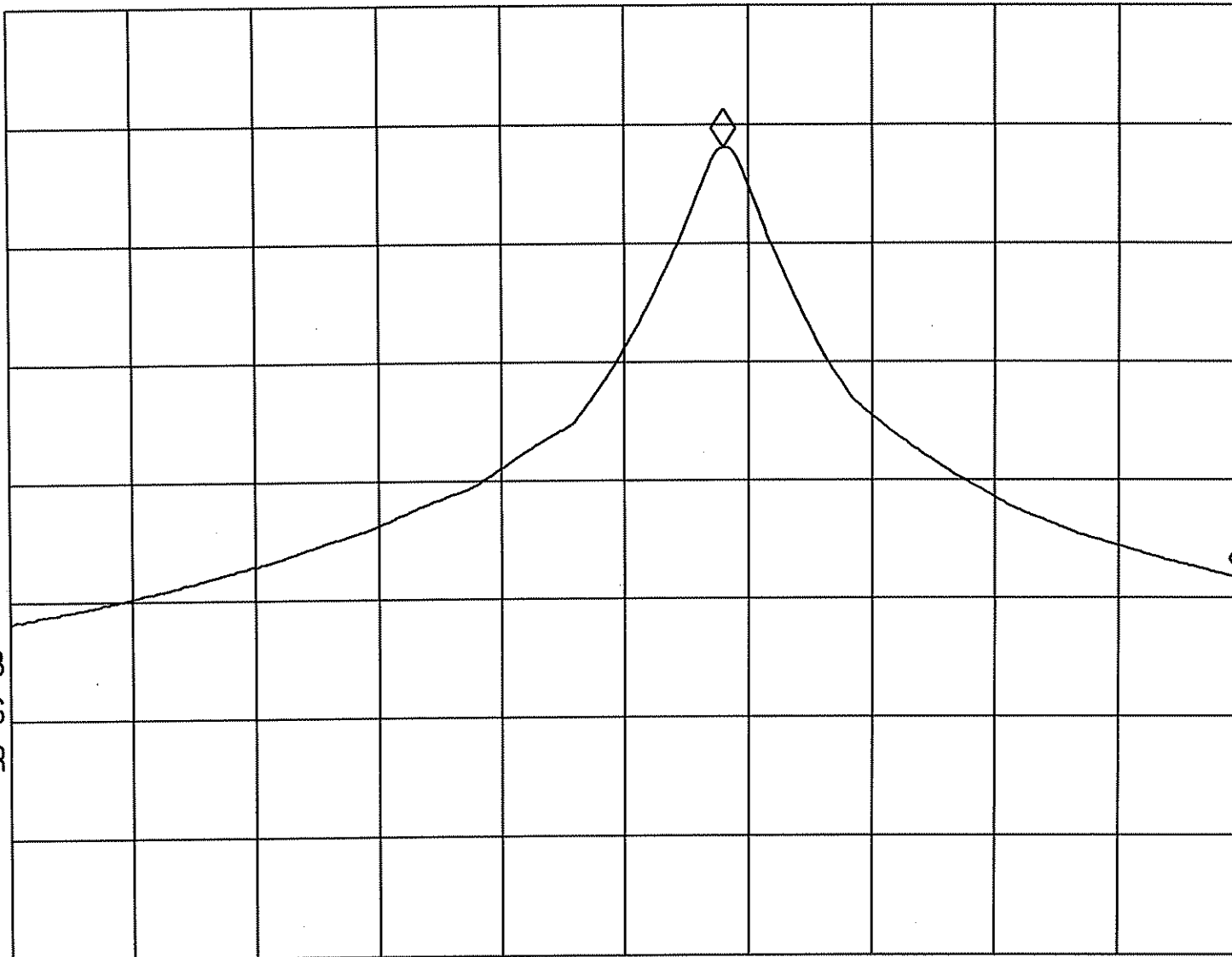
Pursuant to FCC Part 15 Section 15.227 Emissions Requirement

MKR 134.4 KHz
 -36.43 dB

REF .0 dBm

AT 10 dB

PEAK
 LOG
 10
 dB/



MA SB
 SC FS
 CORR

Tested By: [Signature]
 (Chan Ho Yin)

Date: 24/04/2006

Checked By: [Signature]
 (Gary Li)

Date: 27/04/2006

Test Result: Pass / Fail / NA

START 26.9600 MHz

STOP 27.2800 MHz

#RES BW 10 KHz

#VBW 3 MHz

#SWP 1.00 sec