



fisher-price®

Chatter Telephone™

HGJ69 Owner's Manual



Give your childhood a call.

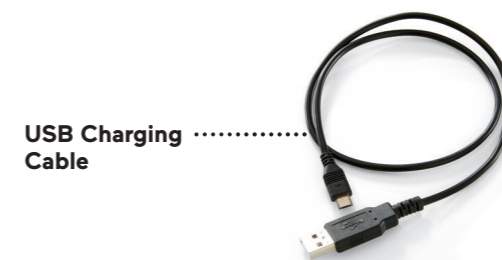
The Bluetooth® word mark and logos are registered trademarks owned by Bluetooth SIG, Inc. and any use of such marks by Fisher-Price is under license. Other trademarks and trade names are those of their respective owners.

©2021 Mattel. \* and ™ designate U.S. trademarks of Mattel, except as noted.

PRINTED IN CHINA

HGJ69-0970-DOM

Parts



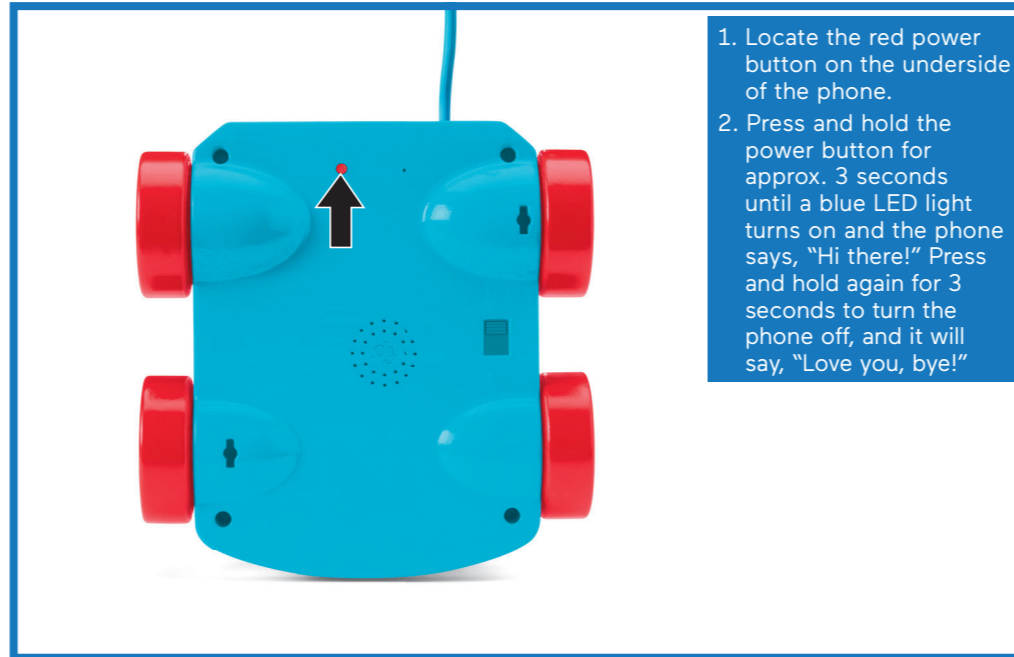
## Charging



1. To charge, turn the phone around and locate the USB port.
2. Connect the included micro USB cable to the phone's USB port.
3. Plug the opposite end of the micro USB cable into a powered computer's USB port or connect to a 5V/1000mAH USB charger (not included) and plug into an outlet. A red LED will light up on the USB port to indicate that the battery is charging.
4. The red LED will go off when the battery is fully charged (approx. 4 hours).
5. Disconnect the micro USB cable.

**Note:** A 5V/1000 mAH USB charger is not included with Chatter Telephone™ and must be purchased separately. This type of charger is universal and can be purchased at any major retailer.

## Setup



1. Locate the red power button on the underside of the phone.
2. Press and hold the power button for approx. 3 seconds until a blue LED light turns on and the phone says, "Hi there!" Press and hold again for 3 seconds to turn the phone off, and it will say, "Love you, bye!"

3. Open the Settings menu on your device and turn on Bluetooth.
4. Select "Chatter Telephone" on the Bluetooth® device list. You will hear the phone say "Good to go" when the devices are successfully paired.

**Hint:** If you cannot pair your device with the phone, try moving the device closer to the phone.



## Placing and Receiving Calls



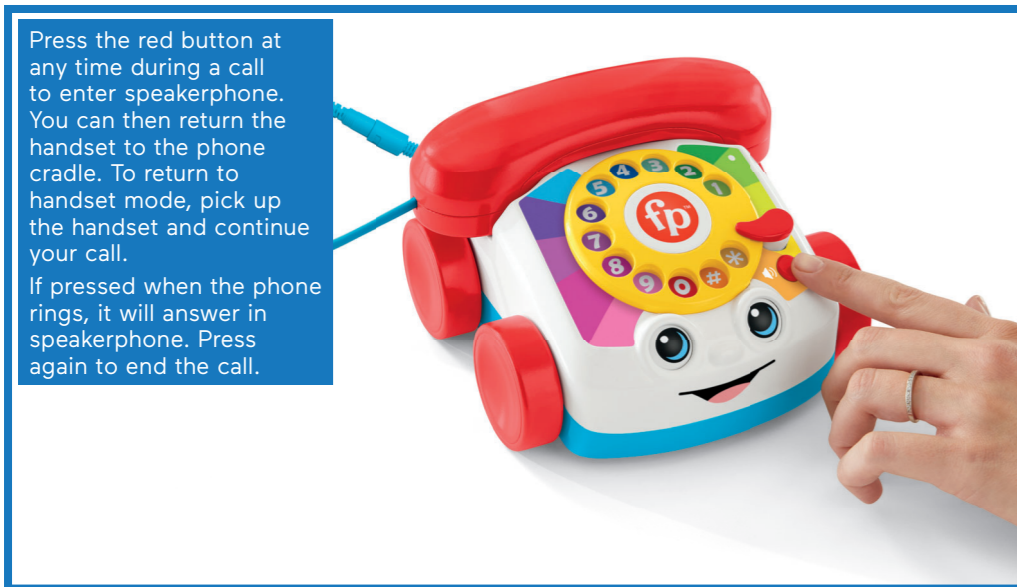
1. Place your finger in the opening of the number that you would like to dial and rotate clockwise until you reach the finger stop.
2. Allow the dial to return to its original position before dialing the next number. (You should hear the phone say each digit as you are dialing the numbers.)
3. After you finish dialing, wait for approx. 5 seconds for your call to connect.



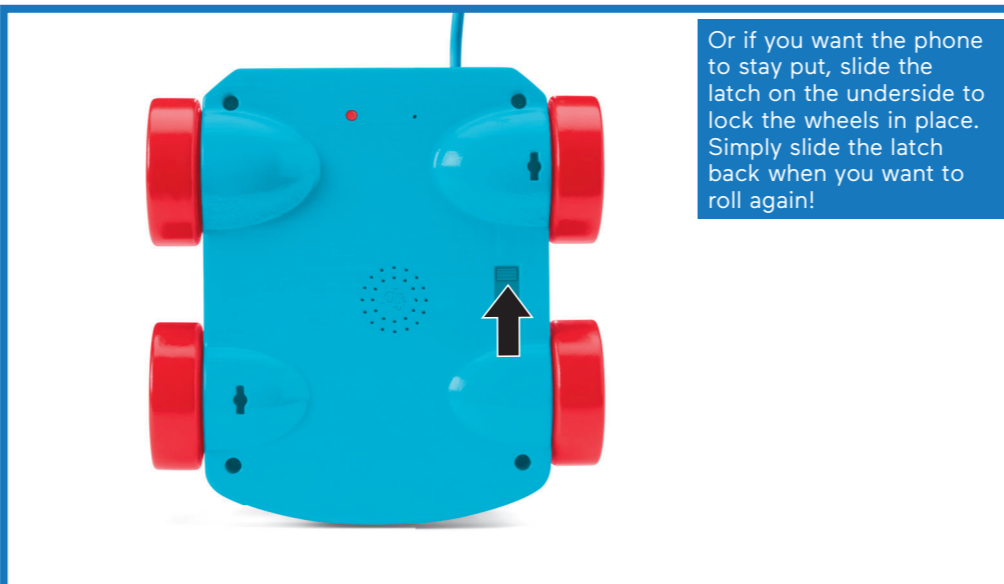
## Placing and Receiving Calls



## Speakerphone



## Ready to Roll?



## Handset Cable



A 4 pole 3.5 mm audio cable is included with Chatter Telephone™ for use of the handset. The handset cable is segmented for safety reasons. If the cable becomes disconnected at any time, simply reconnect it to return function to the handset. If the handset cable is lost or damaged, a new one can be purchased separately at any major retailer.

## Consumer Information

Compatible with all Bluetooth®-enabled devices.

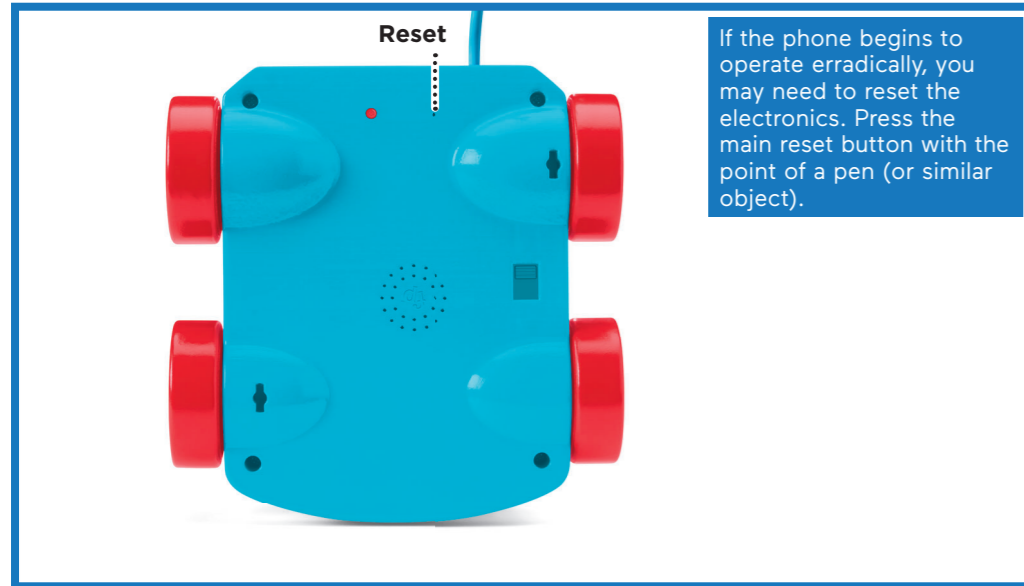
Approximately 9 hours of talk time.

Approximately 72 hours of stand by time on a full battery charge.

Approximately 15 ft. Bluetooth® range.

Recharges via micro USB cable (included).

If lost or damaged, a new micro USB cable charger can be purchased separately at any major retailer.



### FCC STATEMENT (UNITED STATES ONLY)

This equipment has been tested and found to comply with the limits for a Class B digital device, pursuant to Part 15 of the FCC rules. These limits are designed to provide reasonable protection against harmful interference in a residential installation. This equipment generates uses and can radiate radio frequency energy and, if not installed and used in accordance with the instructions, may cause harmful interference to radio communications. However, there is no guarantee that interference will not occur in a particular installation. If this equipment does cause harmful interference to radio or television reception, which can be determined by turning the equipment off and on, the user is encouraged to try to correct the interference by one or more of the following measures:

- Reorient or relocate the receiving antenna.
- Increase the separation between the equipment and receiver.
- Connect the equipment into an outlet on a circuit different from that to which the receiver is connected.
- Consult the dealer or an experienced radio/TV technician for help.

NOTE: Changes or modifications not expressly approved by the manufacturer responsible for compliance could void the user's authority to operate the equipment.

This device complies with Part 15 of the FCC Rules. Operation is subject to the following two conditions: (1) This device may not cause harmful interference, and (2) this device must accept any interference received, including interference that may cause undesired operation.

### CAN ICES-3 (B)/NMB-3 (B)

Operation is subject to the following two conditions: (1) this device may not cause interference, and (2) this device must accept any interference, including interference that may cause undesired operation of the device.

L'utilisation de ce dispositif est autorisée seulement aux conditions suivantes : (1) il ne doit pas produire de brouillage et (2) il doit pouvoir tolérer tout brouillage radioélectrique reçu, même si ce brouillage est susceptible de compromettre son fonctionnement.

FCC:PIYHGJ69-21A5T  
IC:4390C-HGJ6921A5T



### UNITED STATES

Fisher-Price, Inc., 636 Girard Avenue, East Aurora, NY 14052.  
Consumer Services: 1-800-432-5437.

### CANADA

Mattel Canada Inc., 6155 Freemont Blvd., Mississauga,  
Ontario L5R 3W2 Consumer Services/Service à la clientèle :  
1-800-432-5437. [www.service.mattel.com](http://www.service.mattel.com).

### GREAT BRITAIN

Mattel U.K. Limited, The Porter Building, 1 Brunel Way, Slough SL1 1FQ, UK.  
[www.service.mattel.com/uk](http://www.service.mattel.com/uk).

### NEDERLAND

Mattel Europa B.V., Gondel 1, 1186 MJ Amstelveen, Nederland.

### AUSTRALIA

Mattel Australia Pty. Ltd., 658 Church Street, Locked Bag #870, Richmond, Victoria  
3121 Australia. Consumer Advisory Service 1300 135 312.

### NEW ZEALAND

16-18 William Pickering Drive, Albany 1331, Auckland.

### SOUTH AFRICA

Mattel South Africa (PTY) LTD, Office 102 I3, 30 Melrose Boulevard,  
Johannesburg 2196.