

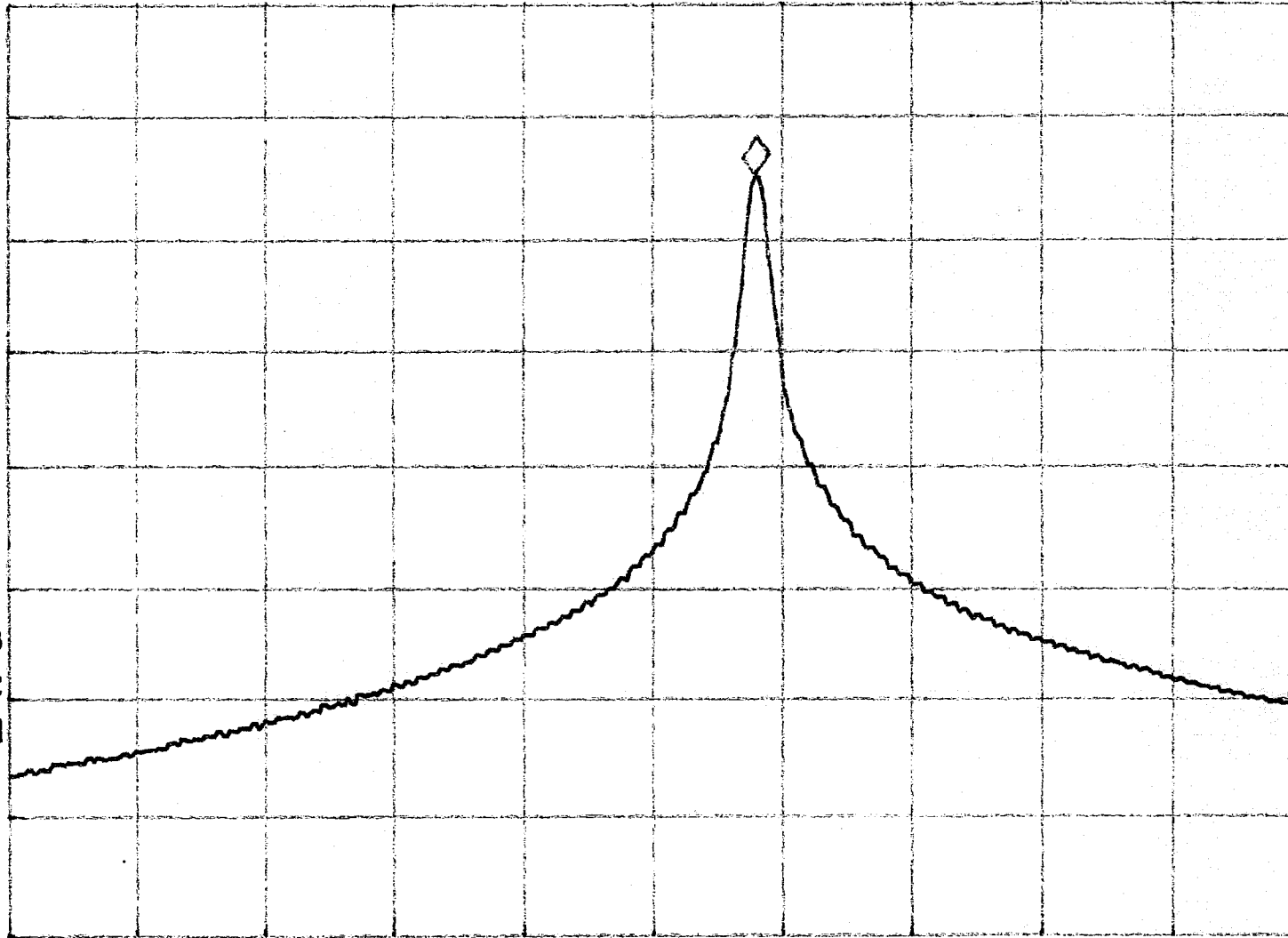
Report No.: 0308630
Model No.: #B8930

Pursuant to FCC Part 15 Section 15.227 Emissions Requirement

hp
REF 97.0 dB μ V AT 10 dB MKR 134.4 KHz
-46.35 dB

PEAK
LOG
10
dB/

VA SB
SC FC
CORR



START 26.9600 MHz STOP 27.2300 MHz
#RES BW 3.0 KHz VBW 3 KHz #SWP 1.00 sec

Tested By: *[Signature]*

Date: 3-5-03

Checked By: *[Signature]*
(Anthony Chan)

Date: 3/6/03

Test Result: Pass / Fail / NA