

## 1 CONSUMER INFORMATION

**Note to Adults:** To ensure that the child's play is both safe and fun, please review all operating instructions and safety rules with your child.

### SAFETY TIPS - FOR ALL DRIVING ENVIRONMENTS

- NEVER drive your vehicle on streets! This is for casual use only.
- DO NOT pick up vehicle while in motion.
- Keep fingers, hair and loose clothing away from the PowerScrews while the vehicle is switched ON.

**CAUTION:** To prevent entanglement, keep hair away from moving parts.

- Adult supervision is recommended when this vehicle is being operated.
- To avoid accidental operation, remove all batteries when not in use. Always turn the vehicle OFF before removing batteries.

### SPECIAL SAFETY INFORMATION - FOR WATER OPERATION

**WARNING:** Never allow young children to play in or around water without adult supervision.

Do not operate near swimmers. Stand away from the water's edge when operating.

### BATTERY SAFETY INFORMATION

In exceptional circumstances batteries may leak fluids that can cause a chemical burn injury or ruin your toy (product). To avoid battery leakage:

- Non-rechargeable batteries are not to be recharged.
- Rechargeable batteries are to be removed from the toy before being charged (if designed to be removable).
- Rechargeable batteries are only to be charged under adult supervision (if designed to be removable).
- Do not mix alkaline standard (carbon-zinc), or rechargeable (nickel-cadmium) batteries.
- Only batteries of the same or equivalent type as recommended are to be used.
- Batteries are to be inserted with the correct polarity.
- Exhausted batteries are to be removed from the toy.
- The supply terminals are not to be short-circuited.
- Do not touch any (wet) safety pins.
- Do not dispose of this toy in a fire. The batteries inside may explode or leak.

### Battery Performance Note:

For best performance use regular or high-performance alkaline batteries (where disposable batteries are called for). If your vehicle is supplied with standard (carbon-zinc) batteries, we indicate the best operating purposes, we recommend replacing them with alkaline batteries when necessary. Battery life may vary depending on battery brand.

## 90-DAY LIMITED WARRANTY - TYCO® R/C PRODUCTS

Mattel, Inc. warrants to the original consumer purchaser that this product will be free of defects in material and workmanship for ninety (90) days (unless specified in alternate warranties) from the date of purchase. Mattel will replace the product in the event of such a defect within the warranty period.

In the event of a defect covered under this warranty, first call the toll-free number listed below. Many problems can be solved in this manner. If necessary, you will be instructed to return the product, postage prepaid and insured, to the address provided. Enclose your name, address, dated sales receipt, and a brief explanation of the defect. Replacement and return shipment will be free of charge.

This warranty does not cover damage resulting from unauthorized modification, accident, misuse or abuse. If the product is returned without a dated sales receipt the product may be excluded from coverage under this warranty.

Mattel's liability for defects in material and workmanship under this warranty shall be limited to replacement, and in no event shall we be responsible for incidental, consequential, or contingent damages (except in those states that do not allow this exclusion or limitation). This warranty is exclusive, and is made in lieu of any express or implied warranty. Valid only in U.S.A. This warranty gives you specific legal rights and you may have other rights, which vary from state to state. Some states do not allow the exclusion of incidental or consequential damages, so the above exclusions or limitations may not apply to you.

**TOLL-FREE NUMBER: 1-888-557-TYCO (8928) (valid only in U.S.A.) Hours: 8:00 A.M. - 5:00 P.M. Eastern Time: Monday - Friday. Expect some delay in January following the holiday season. Please be patient and keep trying the toll-free number.** ADDRESS FOR RETURNS: CONSUMER RELATIONS, 638 GIRARD AVENUE, EAST AURORA, NY 14052

©2004 Mattel, Inc., Mt. Laurel, NJ 08054, U.S.A. Patent Pending. All rights reserved. All trademarks and associated trademarks and trade dress are owned by Mattel, Inc. Retain this address for future reference. Mattel U.K. Ltd., Weybridge, Middlesex TW16 7LN, UK. Telephone: +44 (0)181 608 3000. Fax: +44 (0)181 608 3003. Mattel Australia Pty Ltd., Richmond, Victoria 3121. Consumer Advisory Service: 1300 335 312. Mattel East Asia Ltd., Room 1001, 2000 Harbour View, Harbour City, Flat 1001, 2000 Harbour City, Tsimshatsui, HK, China. Dimprom 3

**COMPLIANCE WITH FCC REGULATIONS (VALID IN U.S. ONLY)**  
This toy contains both pre-market and post-market testing. It is subject to the FCC Rules. Use of this device may cause interference with the following two conditions: (1) This device may not cause harmful interference, and (2) this device must accept any interference received, including interference that may

cause undesired operation. This device does not use license radio frequency energy and if not used properly may cause interference to radio and television reception. It has been tested and found to comply with the limits set by the FCC for this class of device to provide reasonable protection against such interference.

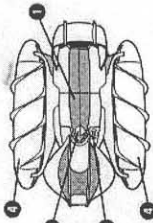
**NOTE:** Changes or modifications not expressly approved by the manufacturer may void the user's authority to operate the equipment.

Keep these instructions for future reference; they contain important information.

## CONTENTS/FEATURES

### Vehicle

- Battery door
- Battery door latch
- ON/OFF switch
- Twin PowerScrews



### SMART CIRCUITRY

Your new vehicle is equipped with advanced "Smart Circuitry" designed to protect its electronic components under extreme operating conditions. If your vehicle overheats or is exposed to extreme cold, the Smart Circuitry will release the transmitter controls for a few seconds, then press the left control to resume normal operation.

**NOTE:** When your vehicle powers up again, you may notice some movement of the vehicle body and the PowerScrews. This may also happen if the vehicle is switched off with the PowerScrews engaged, and then turned back on. This is completely normal. It is an auto reset that returns the vehicle to normal driving position. Once the movement has stopped, you may simply resume normal operation.

### Transmitter

- Driving Controls
- Battery Door
- Antenna
- ON/OFF switch

