

INTERTEK TESTING SERVICES

hp

Pursuant to FCC Part 15 Section 15.227 Emissions Requirement

MKR 134.4 KHZ

Report No.: 0420033
Model No.: B0233 (PT5C)

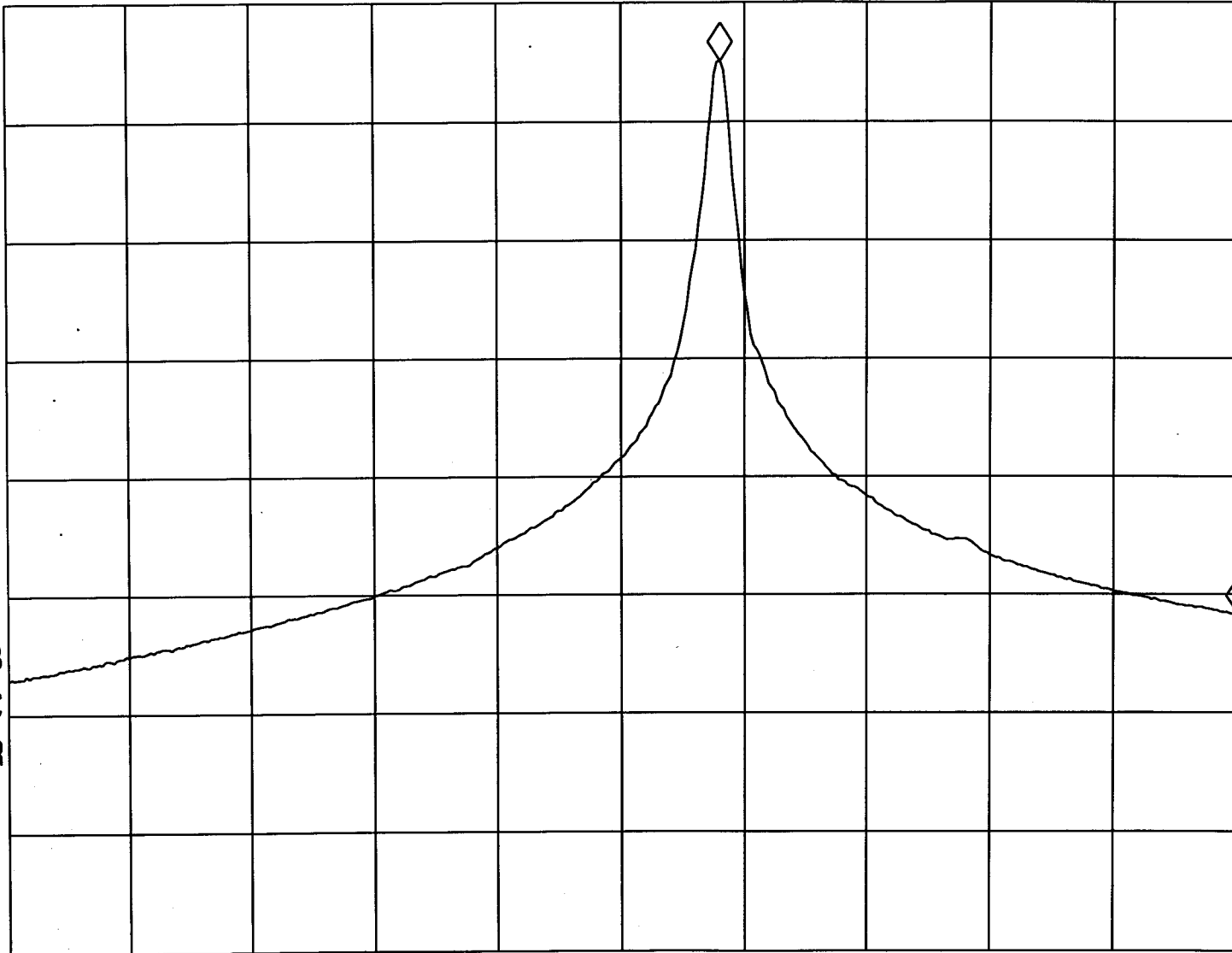
REF -10.0 dBm

AT 10 dB

-46.83 dB

PEAK
LOG
10
dB/

VA SB
SC FC
CORR



Tested By: [Signature]
(Kenneth Wong)

Date: 5/10/04

Checked By: [Signature]
(Ivan Wong)

Date: 4/11

Test Result: Pass Fail / NA

START 26.9600 MHz

STOP 27.2800 MHz

#RES BW 3.0 KHZ

VBW 3 KHZ

#SWP 1.00 sec