

Report No.: 0301921
Model No.: B0233

Pursuant to FCC Part 15 Section 15.227 Emissions Requirement

hp

REF 107.0 dBμV

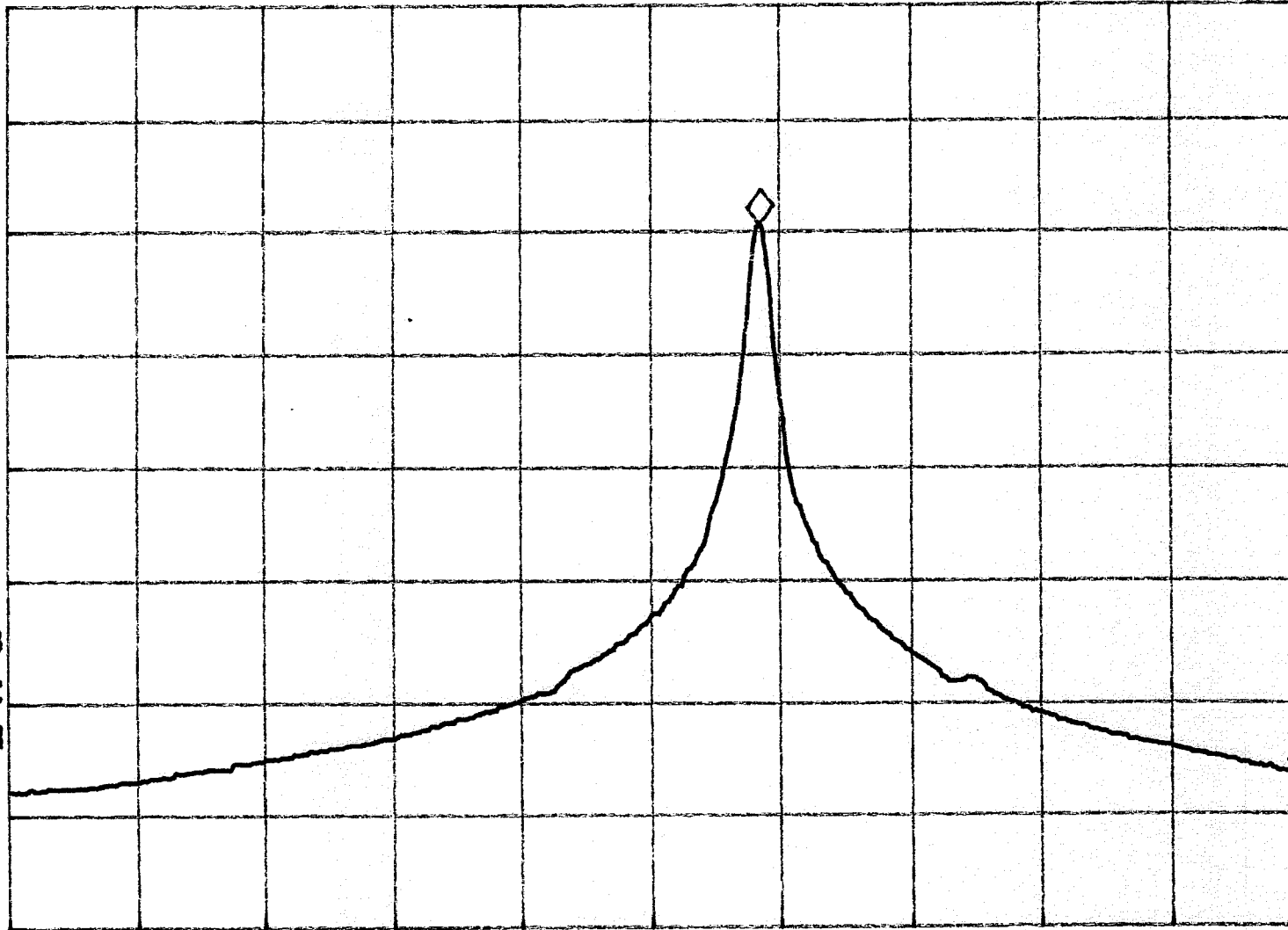
AT 10 dB

MKR 132.8 KHz

-47.22 dB

PEAK
LOG
10
dB/

VA SB
SC FC
CORR



Tested By: *[Signature]*
(Gary Li)

Date: 17-2-03

Checked By: *[Signature]*
(Anthony Chan)

Date: 17/2/03

Test Result: Pass / Fail / NA

START 26.9600 MHz

#RES BW 3.0 KHz

VBW 3 KHz

STOP 27.2800 MHz

#SWP 1.00 sec