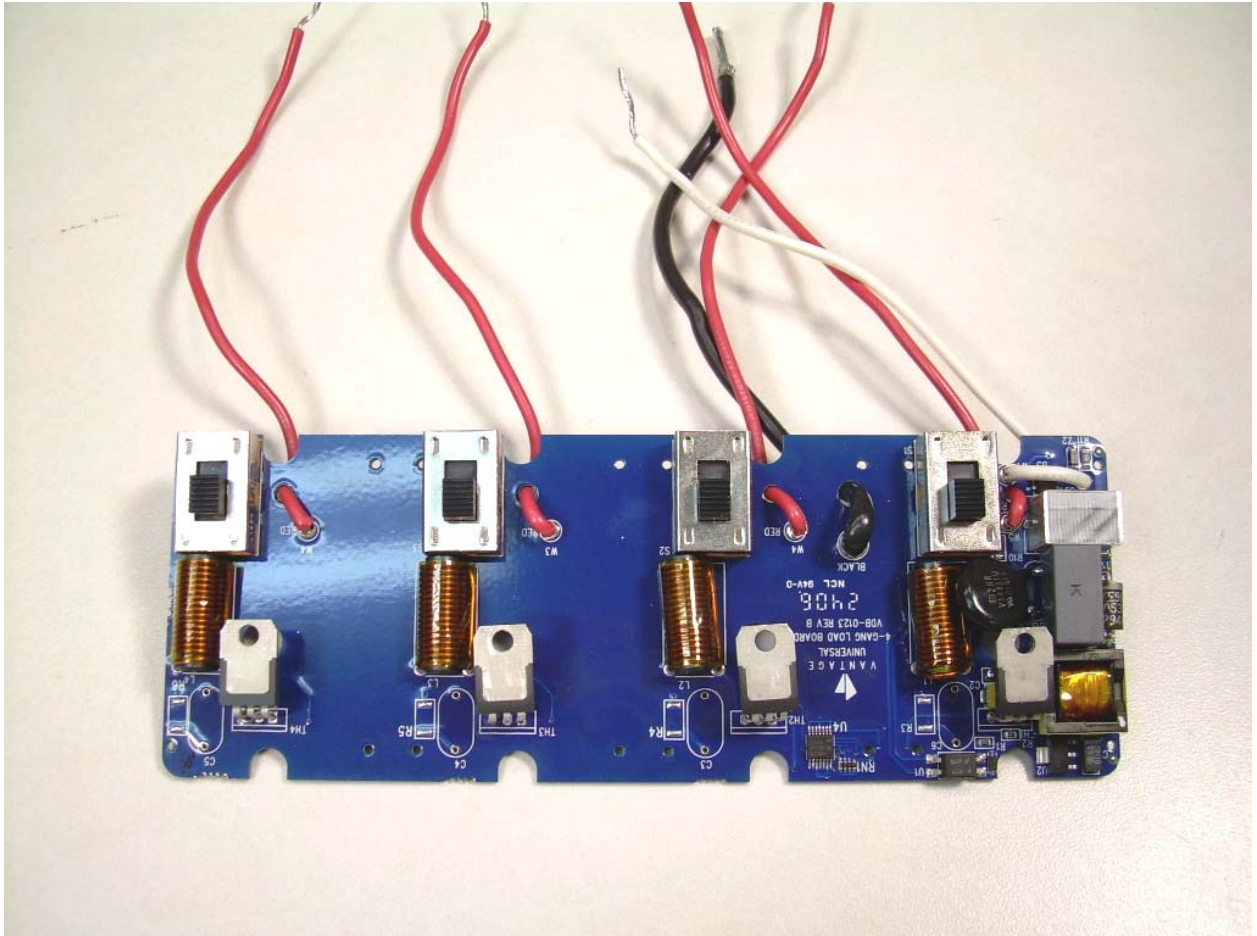
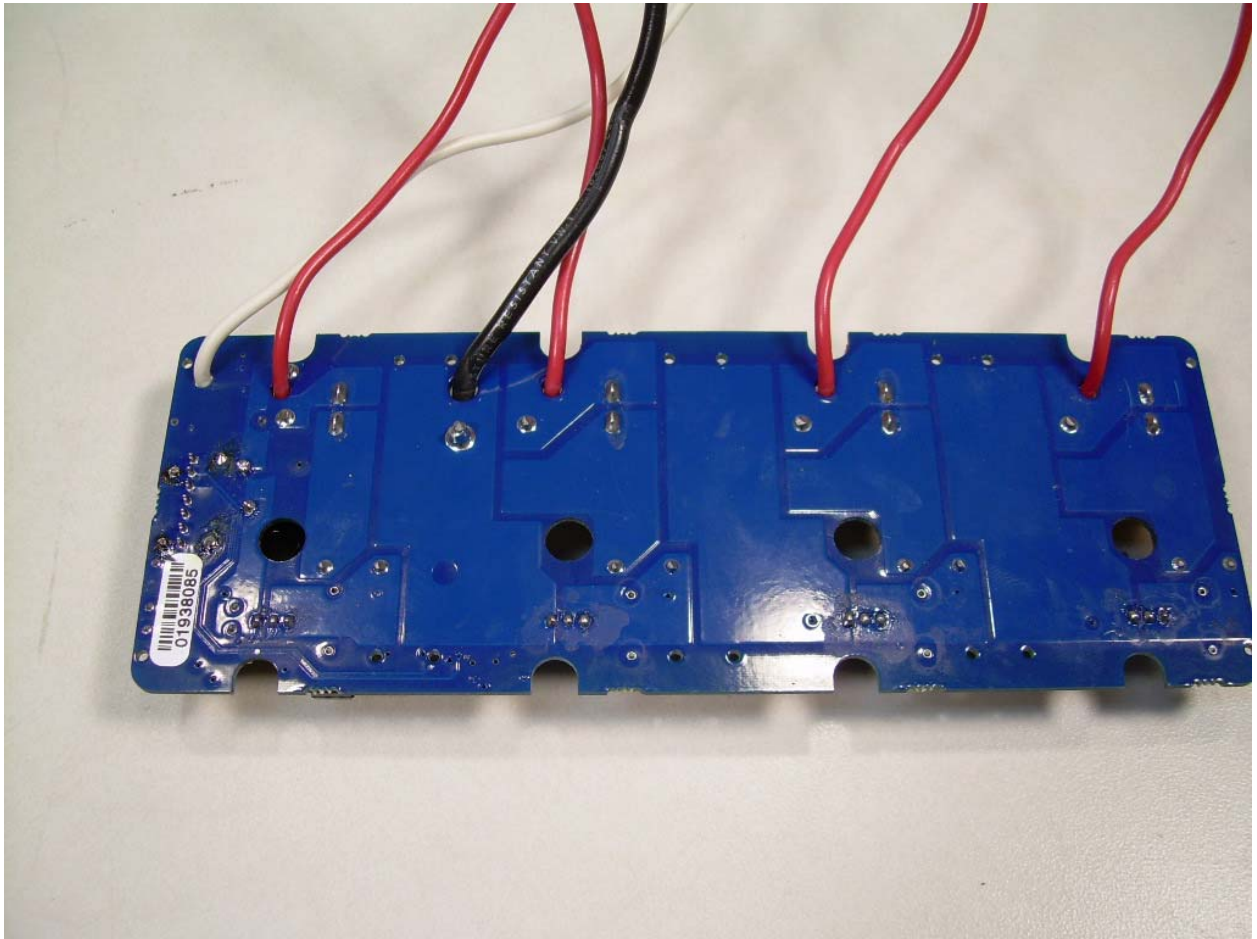


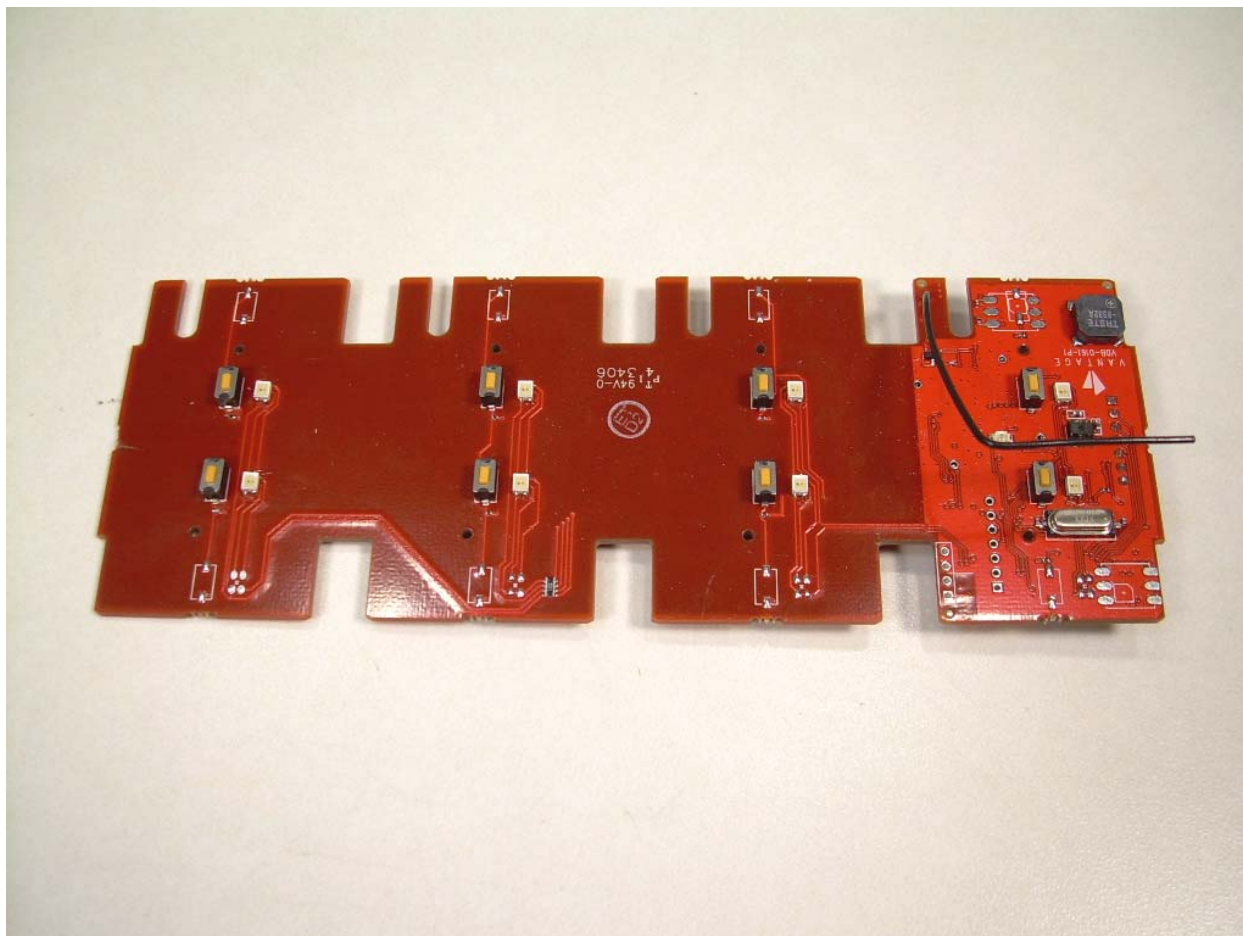
Front Side of the Dimmer PCB



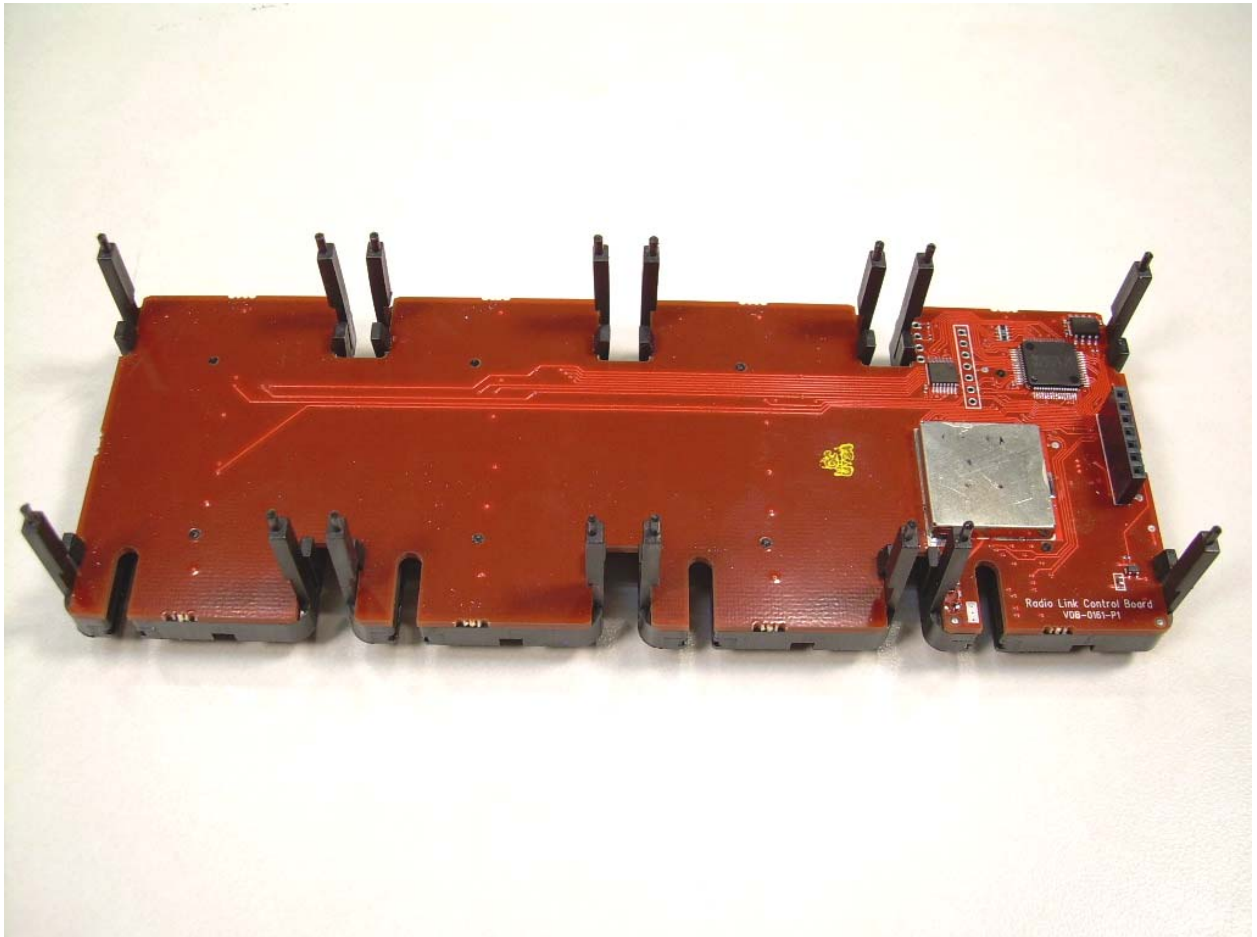
Back Side of the Dimmer PCB



Front Side of the Switch/Transceiver PCB

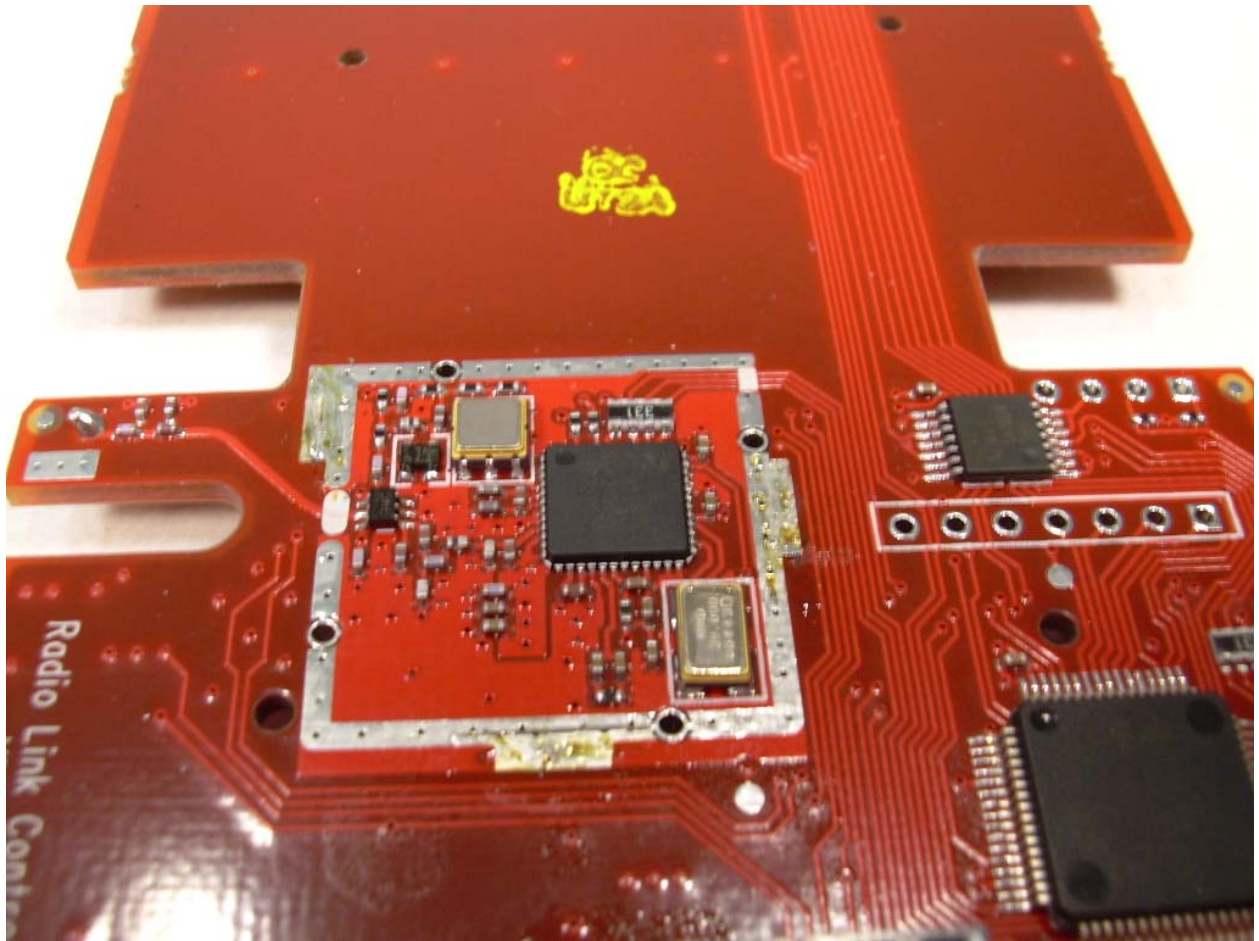


Back Side of the Switch/Transceiver PCB

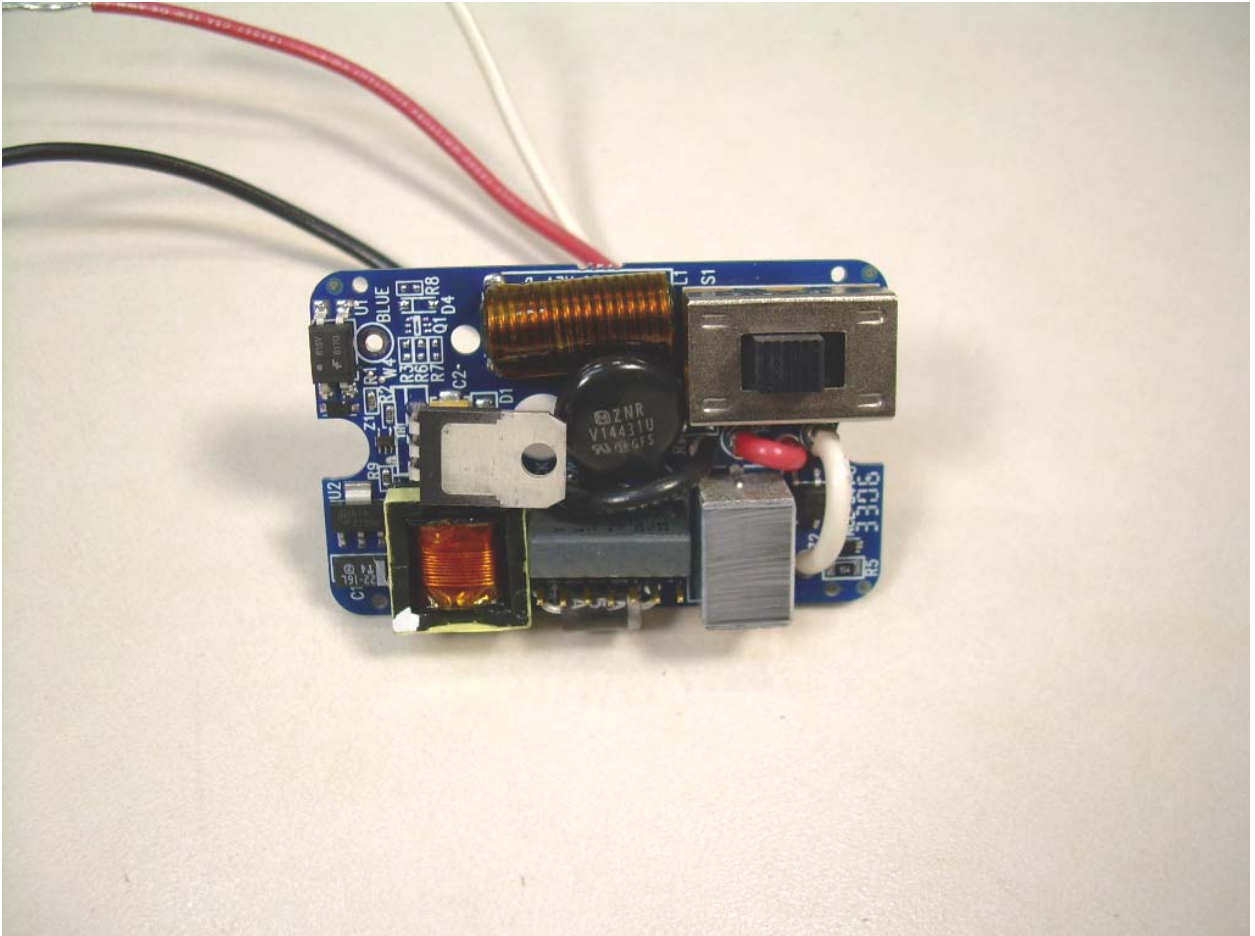




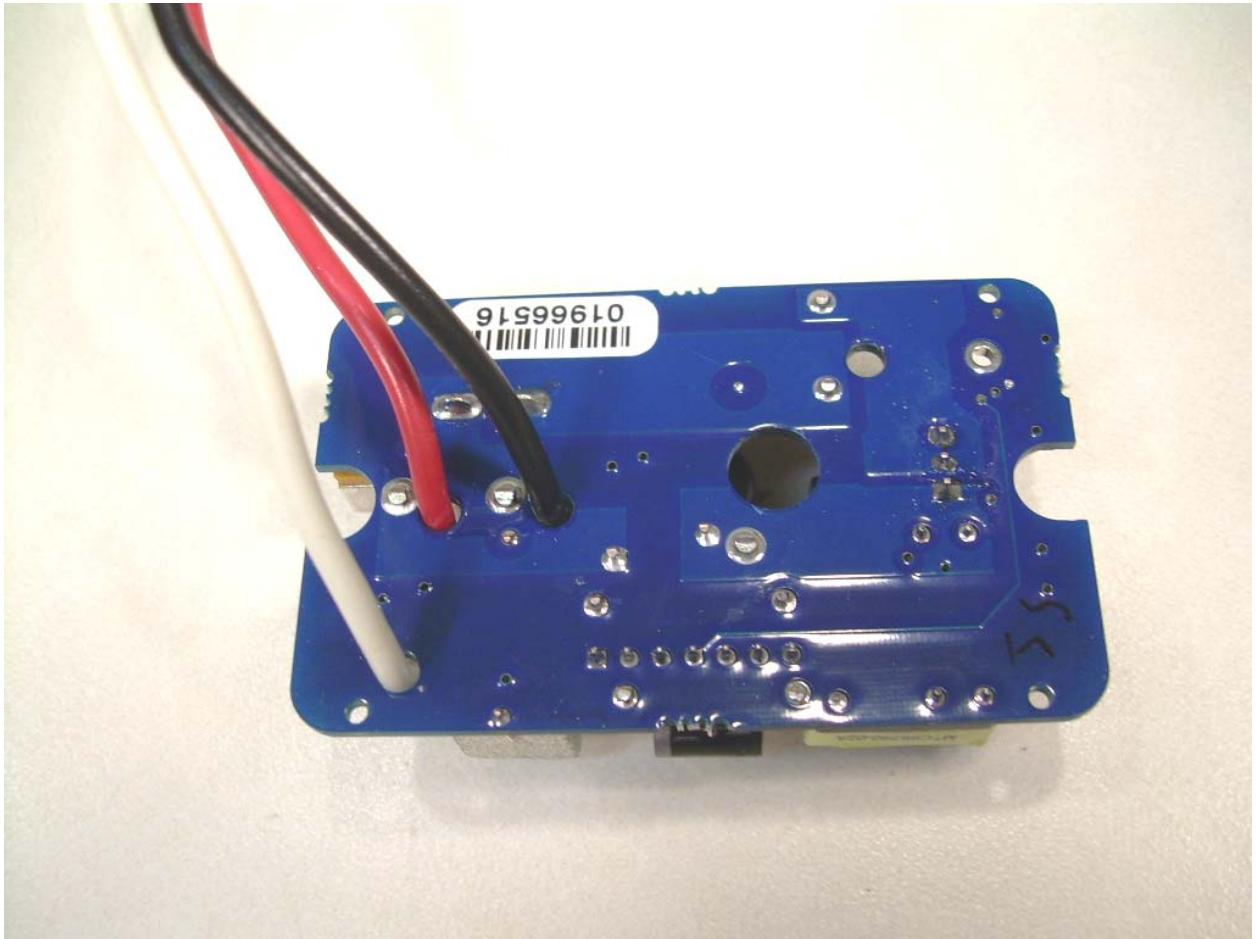
View of the Transceiver Circuit



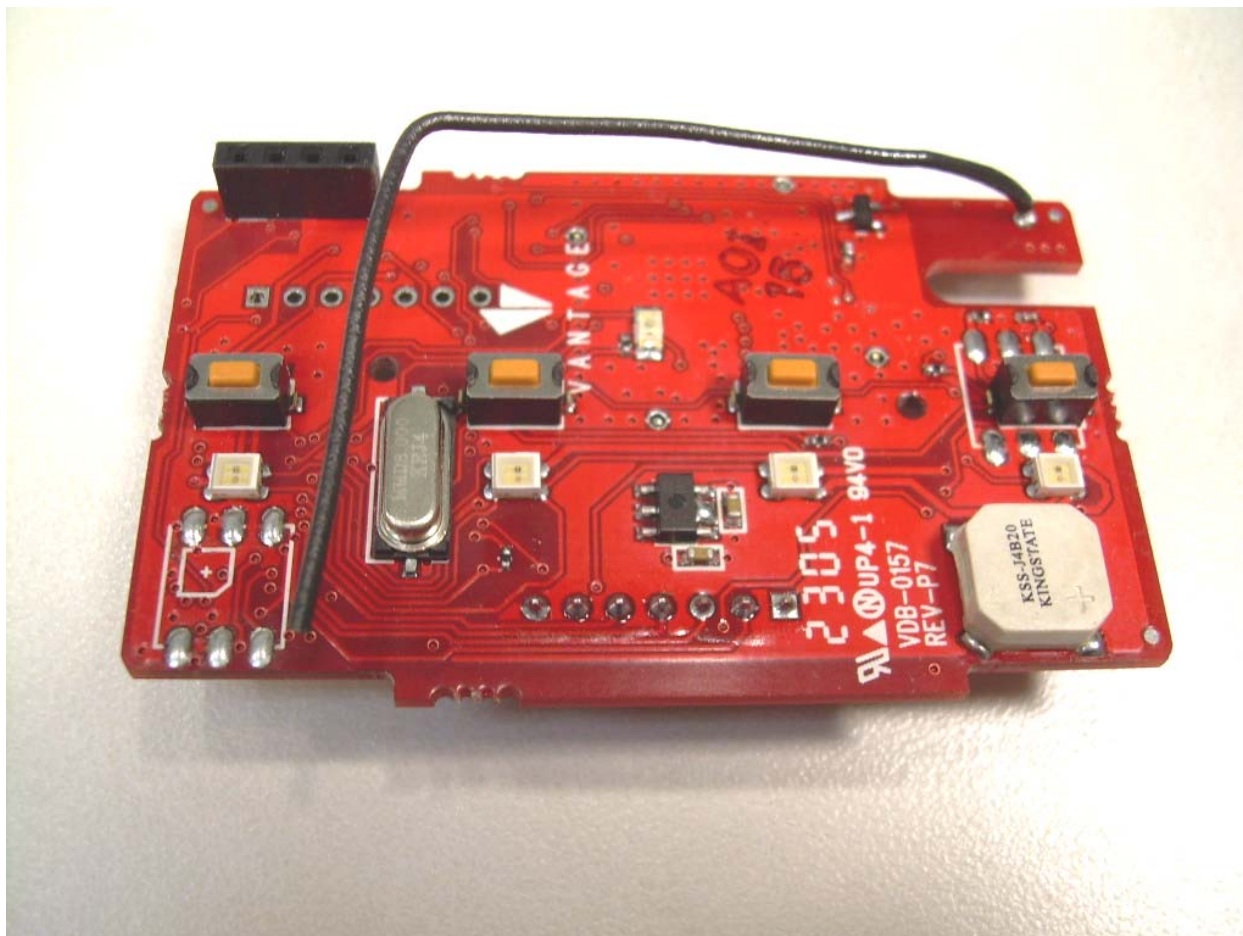
View of the Component Side of the Dimmer PCB



View of the Trace Side of the Dimmer PCB



Front Side of the Switch/Transceiver PCB





Back Side of the Switch/Transceiver PCB

