

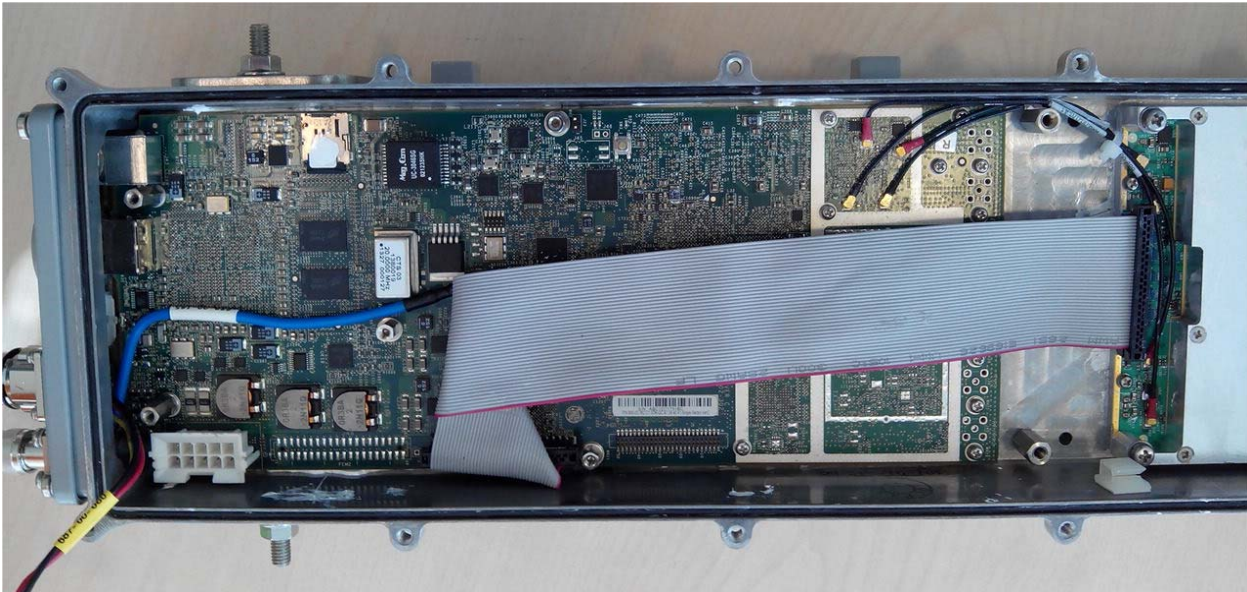
## **INTERNAL PHOTOGRAPHS**

This document contains 12 photographs

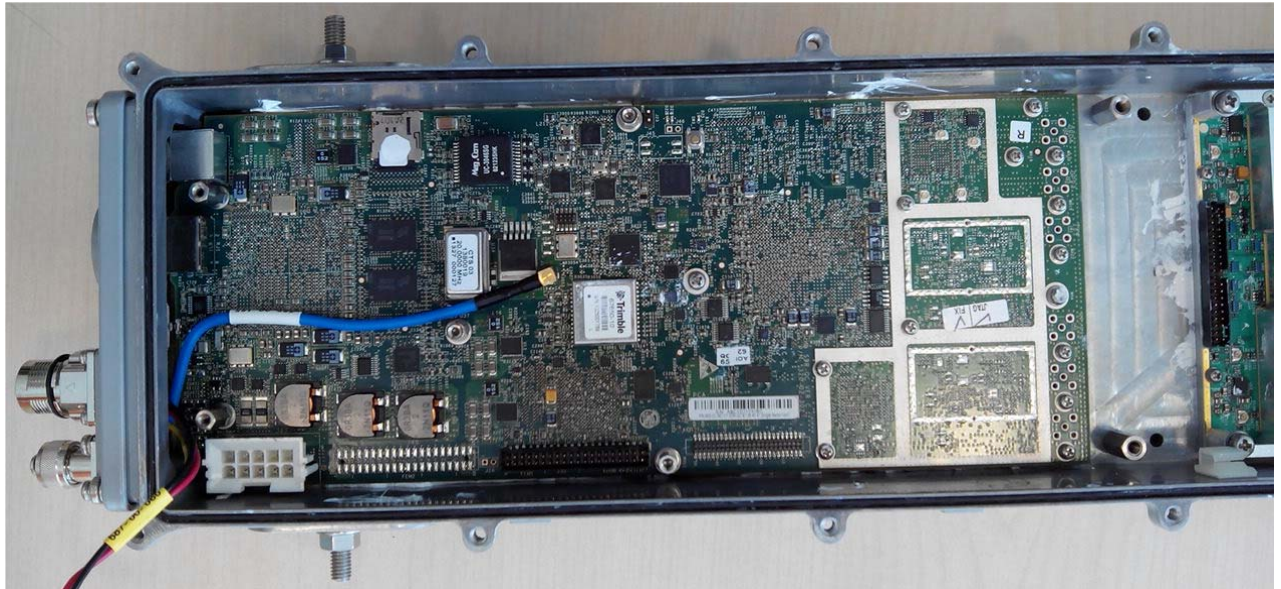
**Photograph No.1**  
**“Synergy 2000 700 MHz (B12, B17)” base station internal view**



**Photograph No.2**  
**“Synergy 2000 700 MHz (B12, B17)” base station internal view**  
**with filter and power supply removed**



**Photograph No.3**  
**“Synergy 2000 700 MHz (B12, B17)” base station internal view without flat cable**





**Photograph No.4**  
**SDR-Qc, Digital and RF card front view**



**Photograph No.5**  
**SDR-Qc, Digital and RF card second side view**

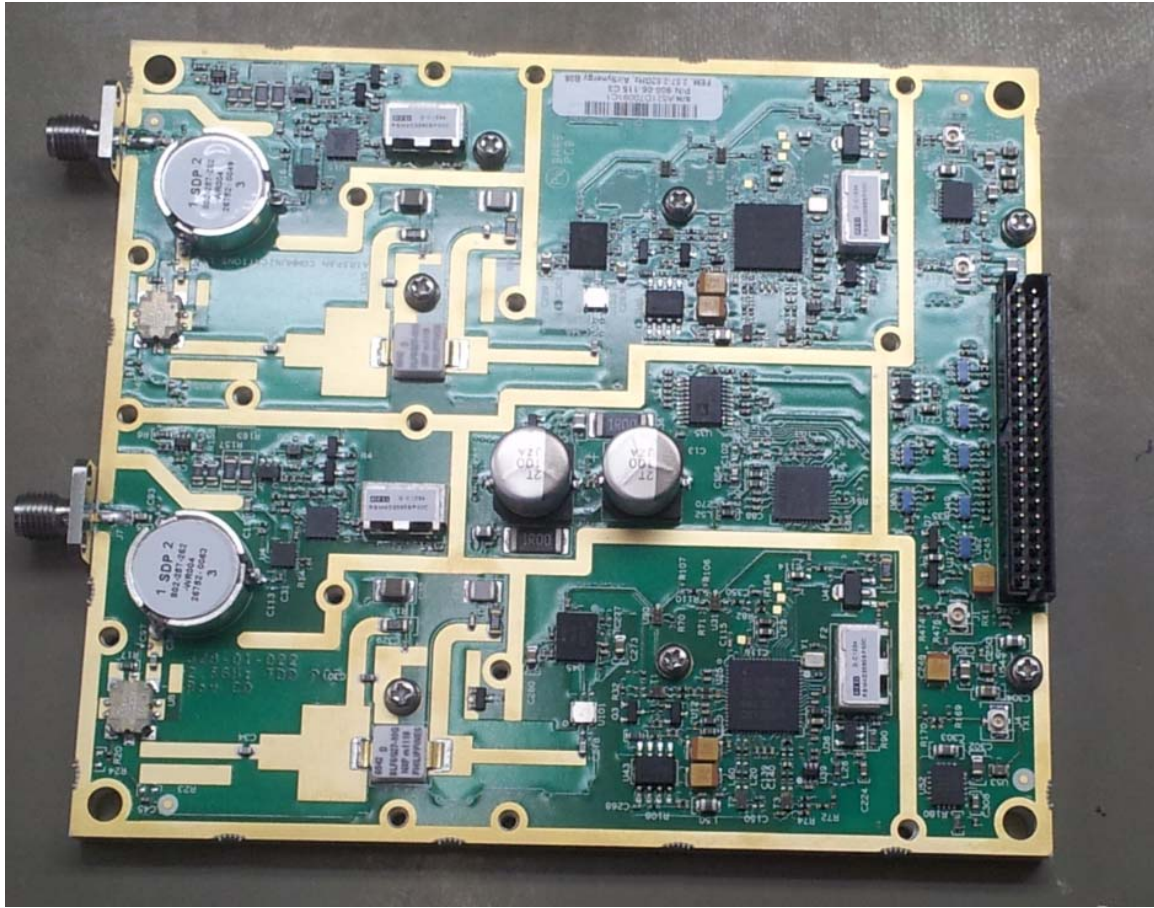




**Photograph No.6**  
**Base station assembled FEM device**

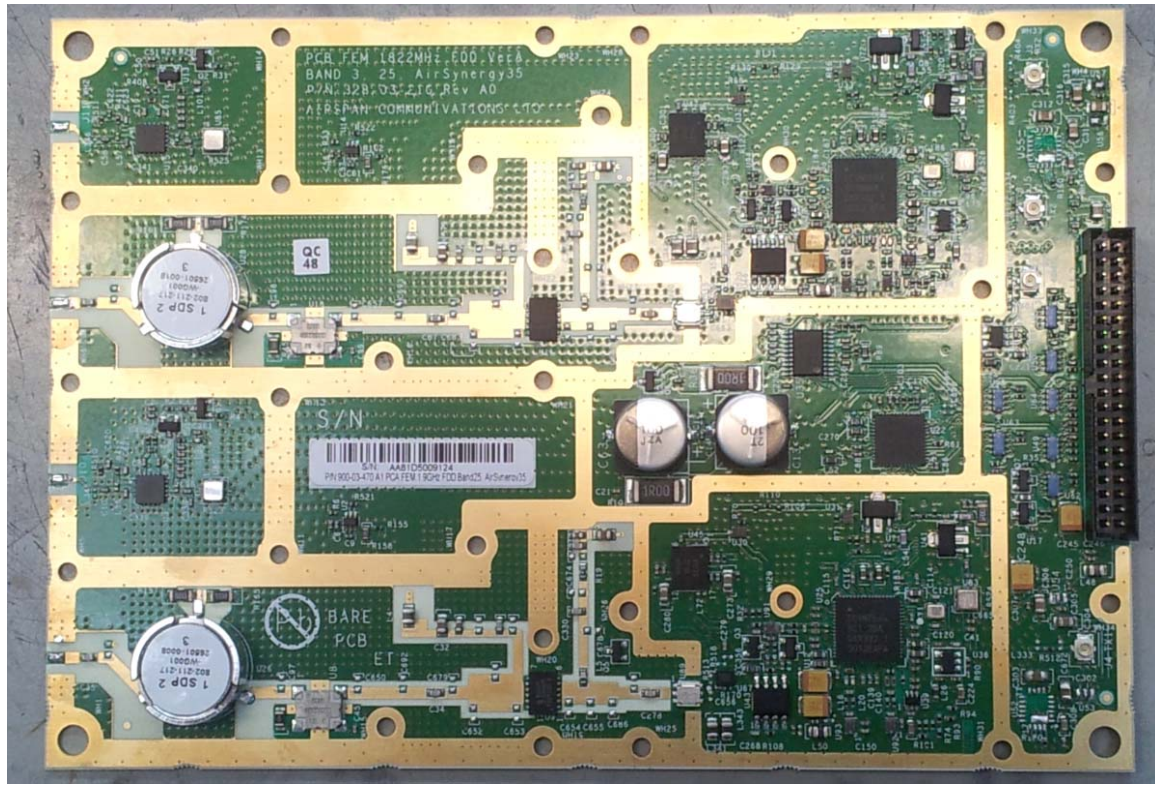


Photograph No.7  
FEM device PCA on mechanical base plate

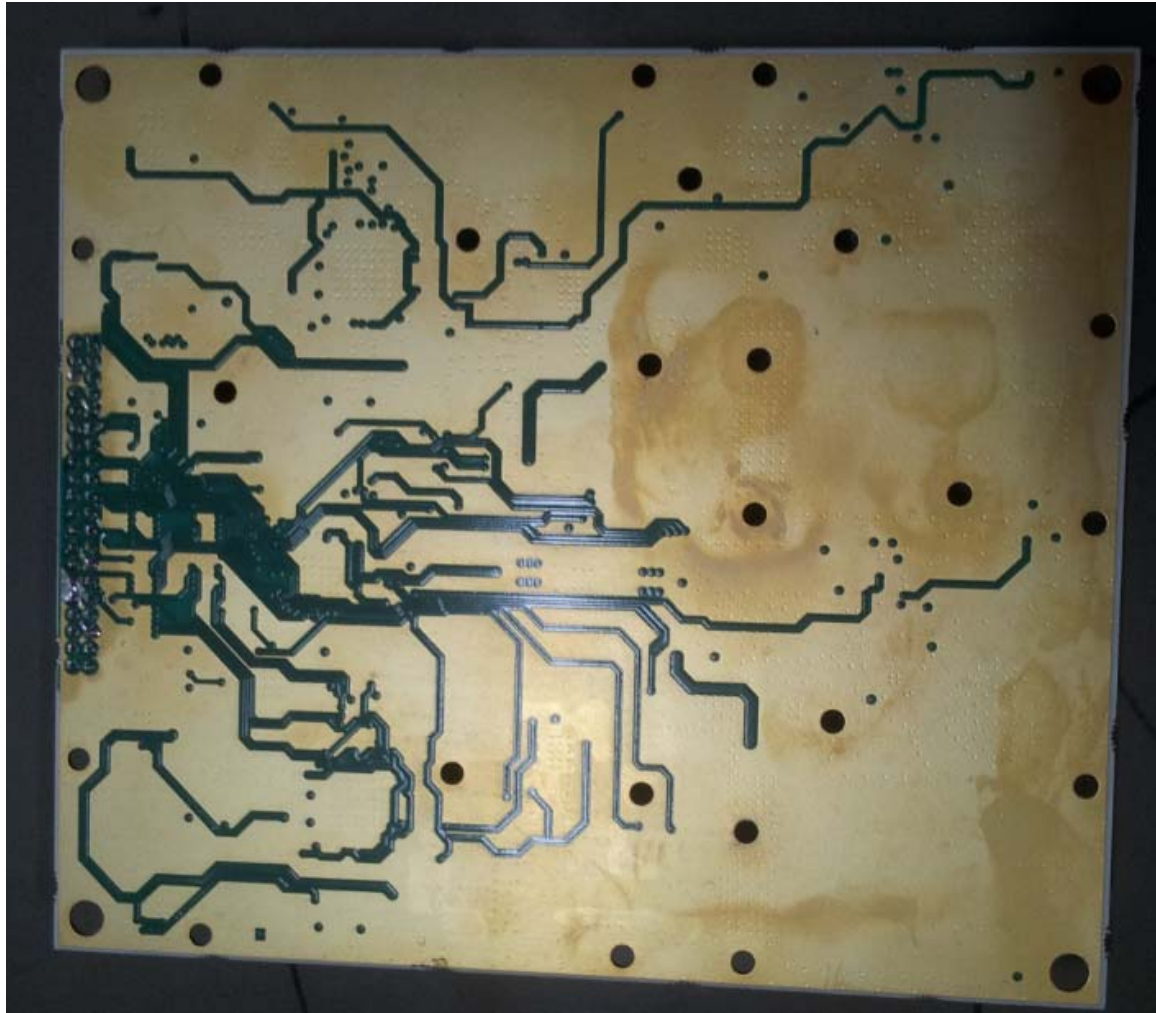




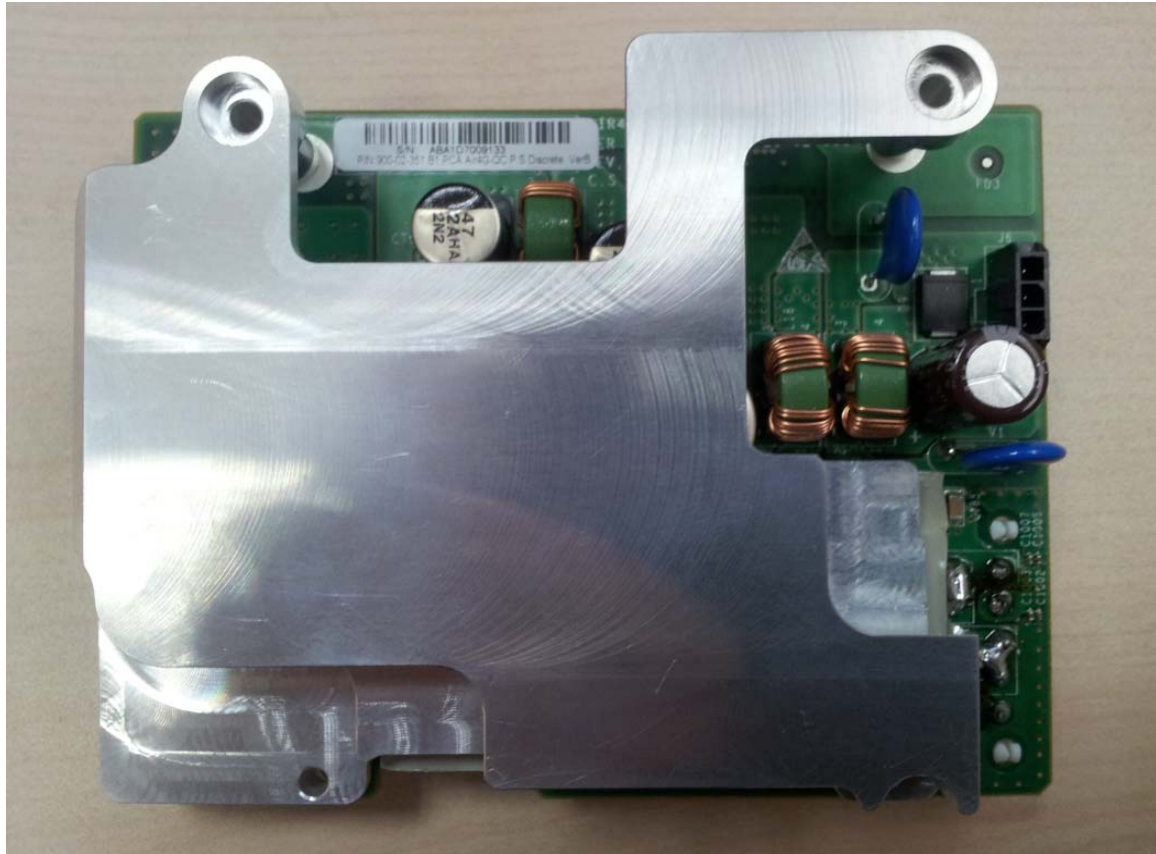
Photograph No.8  
FEM device PCA front view



**Photograph No.9**  
**FEM device PCA second side view**



**Photograph No.10**  
**Base station assembled power supply module**







Photograph No.12  
Power supply PCB second side view

