

# AW3008

## +/-45° Polarized 90° Sector Antennas

### 2300-2700MHz

### Quad Port Fixed Tilt

The AW3008 is a broadband dual polarised Quad Port Basestation Antenna which is designed for MIMO applications. Emphasis has been placed on rugged mechanical construction, styling, small dimensions plus superior electrical performance. This antenna is designed to meet the most stringent environmental conditions.

#### Features:

- Excellent Radiation Patterns
- Low Upper Sidelobes plus Null Fill
- Wide Bandwidth with stable gain across the band
- Low PIM Design
- UV Stabilised Radome with Stainless steel Brackets

#### Applications:

WiMAX Sector antennas, 4x2 and 4x4 MIMO

#### Electrical Specifications:

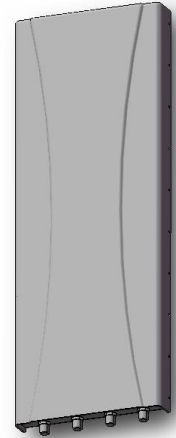
Frequency Range:	2300 MHz - 2700 MHz //2300 MHz - 2700 MHz
Gain:	17.0 dBi
Return Loss:	> 15dB
Polarisation:	+/-45° Slant
Isolation	>30dB
Front to Back Ratio:	>30dB
Horizontal 3dB BW:	90°
Vertical 3dB BW:	7°
Upper Sidelobe Suppression:	>18dB
Electrical Downtilt:	4° (2° & 8° options also available)
Power Handling:	150W

#### Mechanical Specifications:

Connectors:	4 x N Type Female
Connector Location:	Bottom
Dimensions (LxWxD):	1100 x 260 x 55 mm
Weight:	10Kg
Radome:	UV Stabilised Styrosun

#### Environmental Ratings:

Rated Wind Velocity	200 km/h (125mph)
Lightening Protection:	DC Grounded
Temperature	-40°C to +70°C



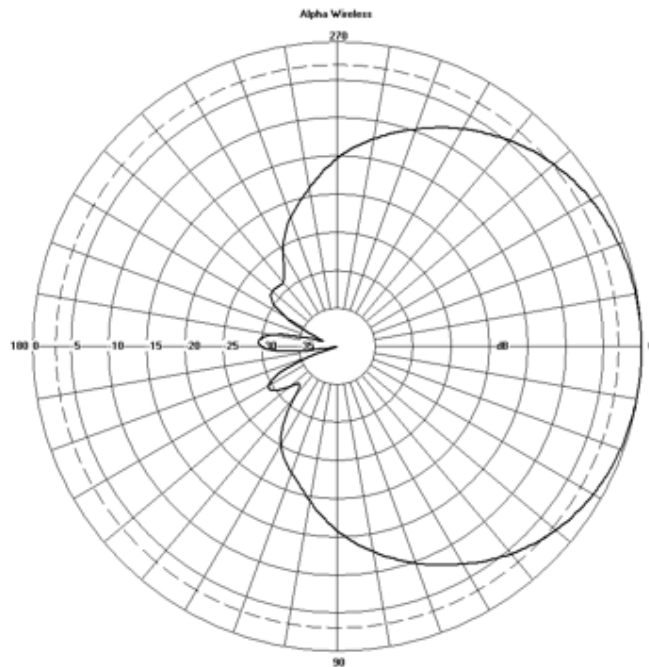
## AW3008 (Cont)

### Mounting Options:

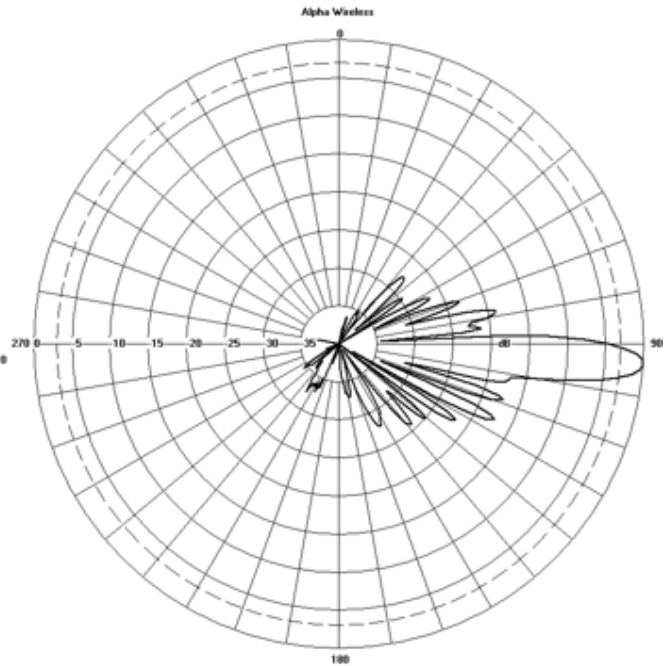
Standard	(Included)	Pipe Mount with 2 Stainless Steel Bands
Adjustable	(Optional)	Mounting Kit (CL-V-103, CL-V-104)

### Typical Radiation Patterns:

Azimuth Pattern



Elevation Pattern



### Antenna Outline:

