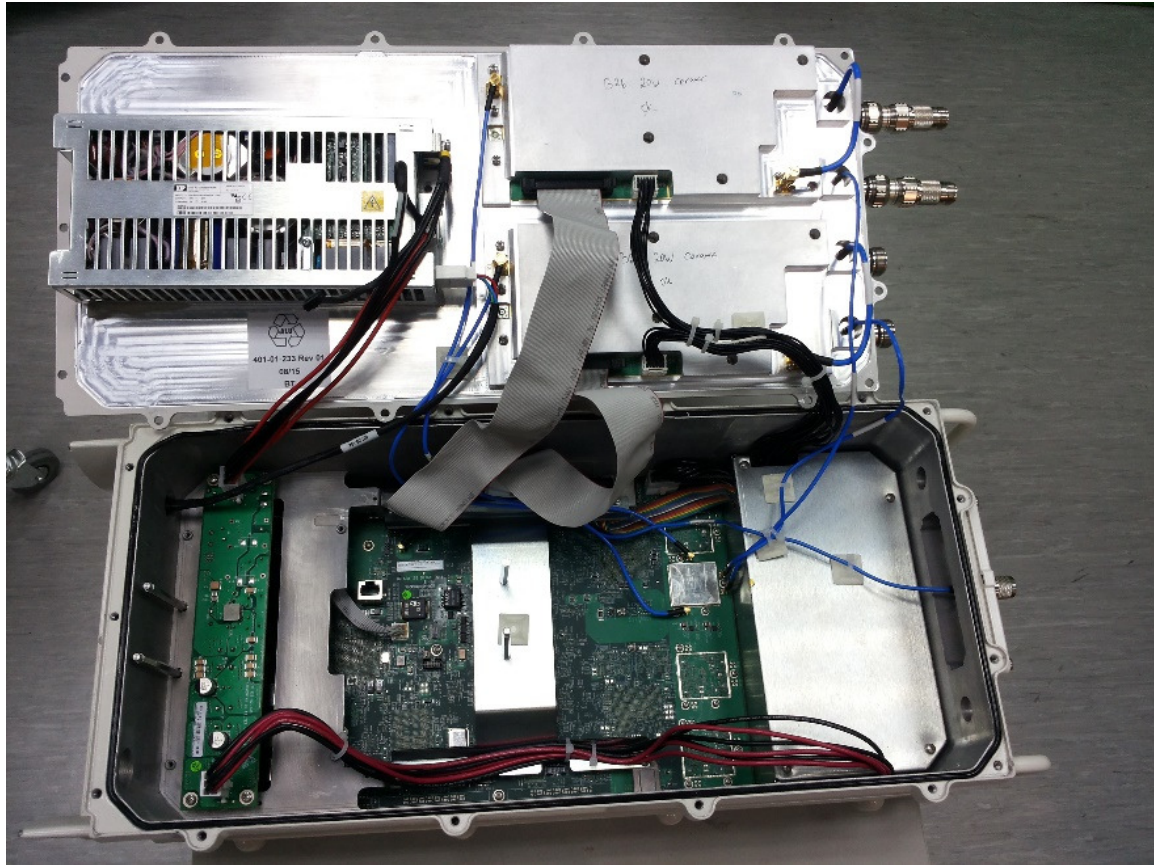


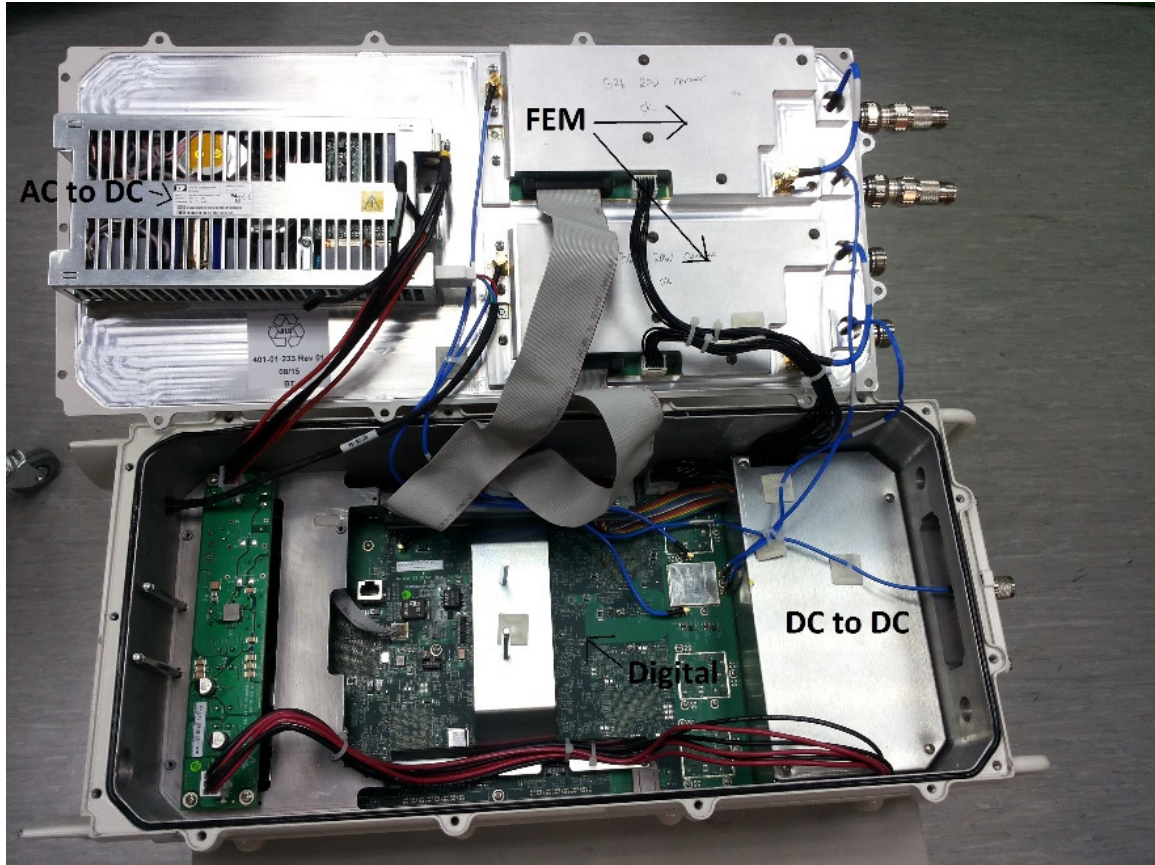
## **INTERNAL PHOTOGRAPHS**

This document contains 9 photographs

**Photograph No.1**  
**“AirHarmony 4000 866 MHz (B26)” base station internal view**



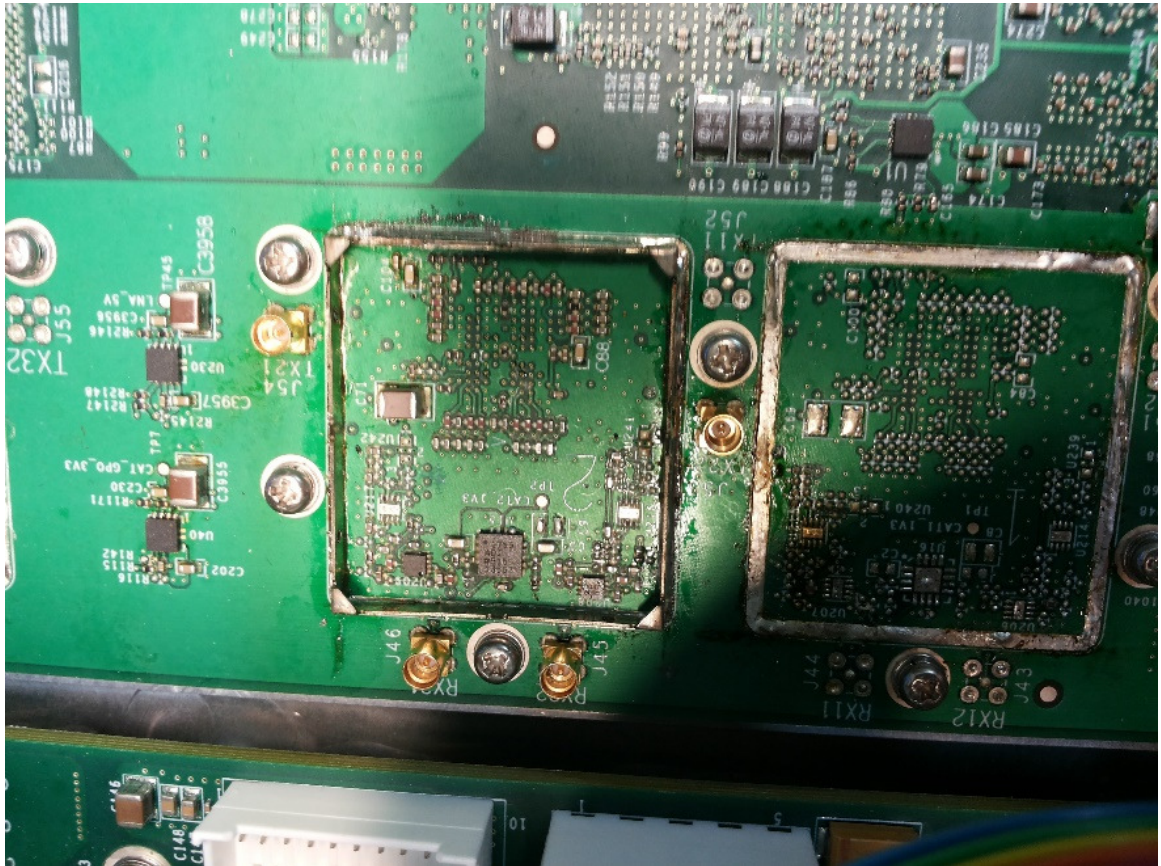
Photograph No.2  
"AirHarmony 4000 866 MHz (B26)" base station internal view



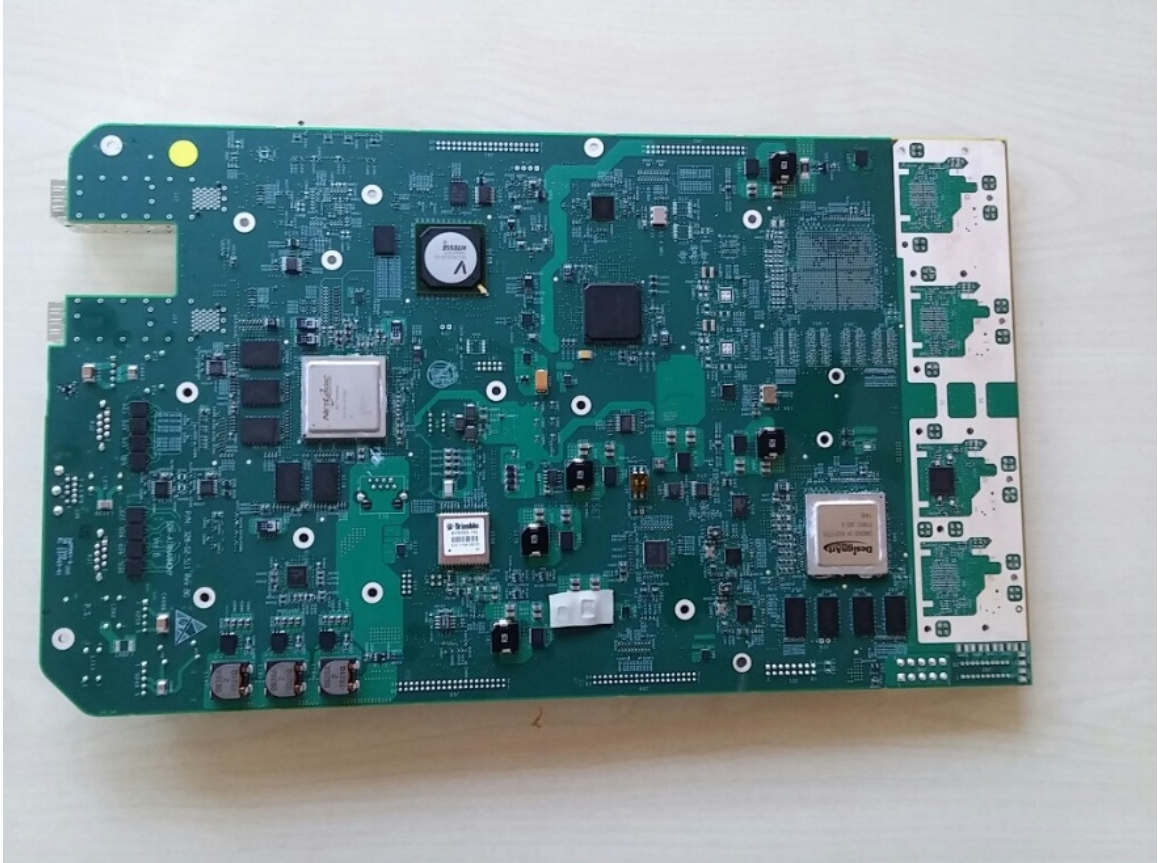
**Photograph No.3**  
**Main board front view**



**Photograph No.4**  
**Main board close view**



**Photograph No.5**  
**Main board second side view**



Photograph No.6  
FEM device PA front view

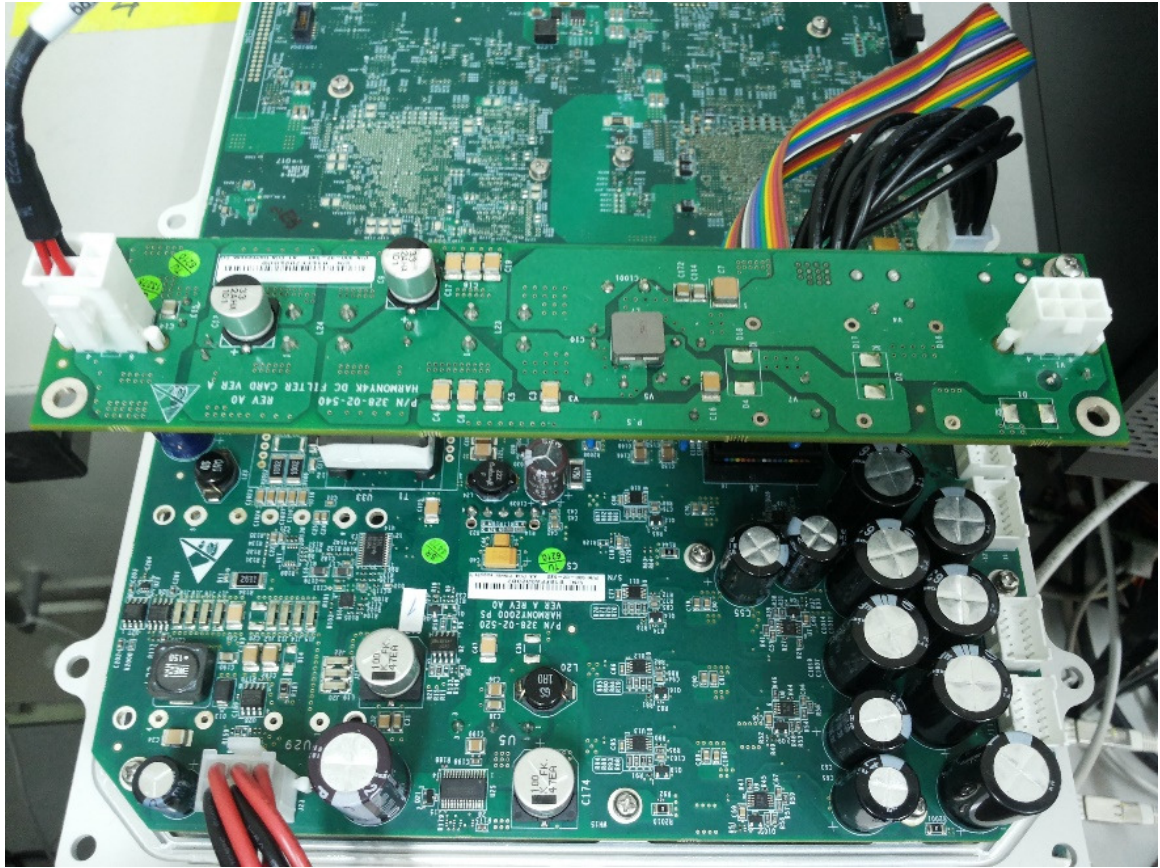


**Photograph No.7**  
**FEM device PCA second side view**





Photograph No.8  
DC to DC converter



Photograph No.9  
AC to DC power supply

