

Antenna Array Containing Antenna A

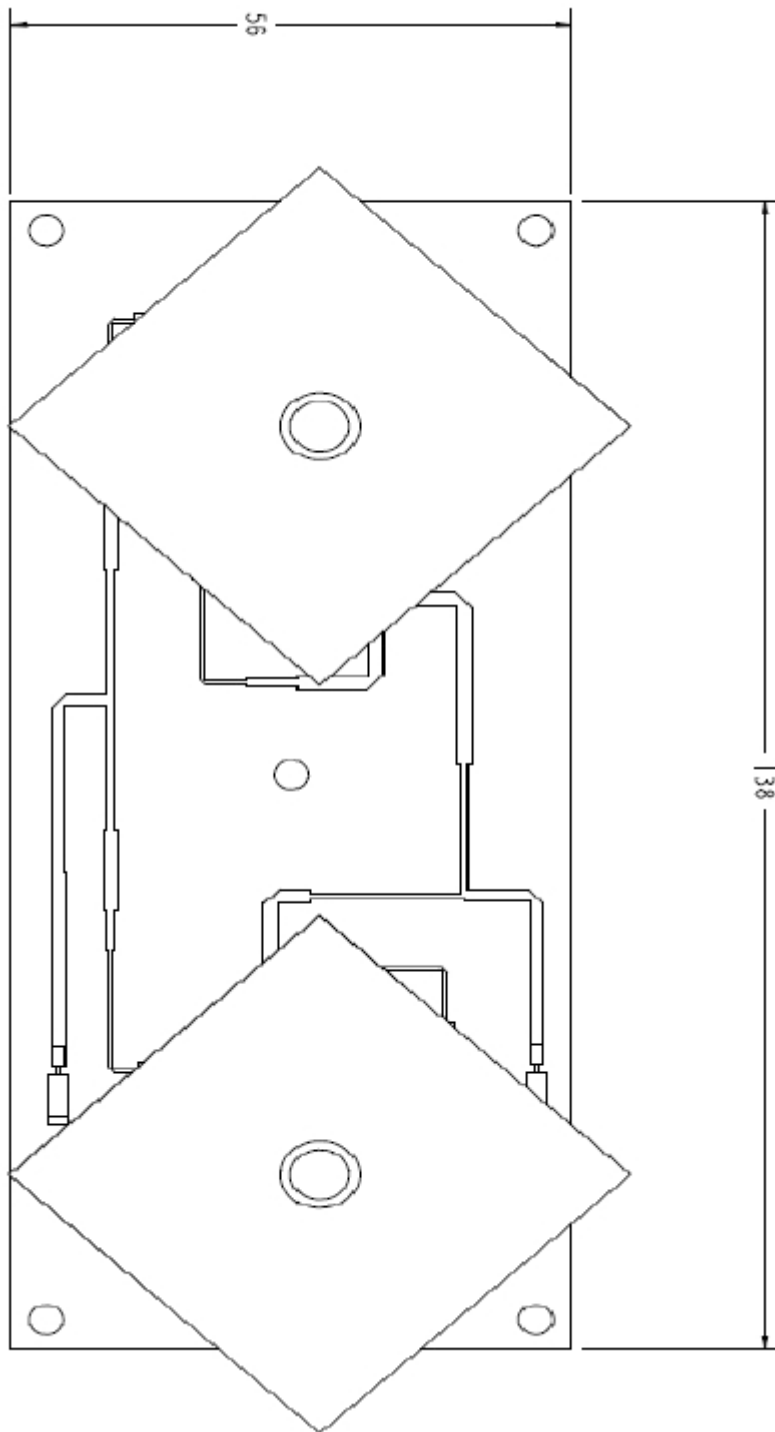
The parameters in this specification follow the definitions and recommendations per NGMN P-Basta, Release 9.6

Antenna A

LTE band number	41
Frequency range	2496 – 2690 MHz
Average gain to RF connector	9 dBi
Azimuth HPBW	$60^\circ \pm 10^\circ$
Elevation HPBW	$35^\circ \pm 5^\circ$
Polarisation discrimination	18 dB
Front to back ratio	25 dB
Polarisation	Dual Slant $\pm 45^\circ$
Electrical Down-tilt	0°
Impedance	50 ohms
First side-lobe level	≤ -15 dB
VSWR	$\leq 1.5:1$
Isolation between RF Ports	≥ 20 dB
Average transmission power per polarisation	26 dBm
Peak transmission power per polarisation	36 dBm
Recommended maximum dimensions (mm)	80 w x 170 h x 12 d (See Outline Drawing on P2)
Connector type	2 x U.FL male on 250 mm cable tail
Cable Length and Connector Orientation	100mm N (A1 & A2)

AW3509-2 Outline Drawing

Antenna A 2496-2690 MHz



© Alpha Wireless Limited 2014. Last modified: May, 18, 2016

Web: www.alphaantennas.com Email: info@alphaantennas.com

* Alpha Wireless are always improving products; specification subject to change without notice.