

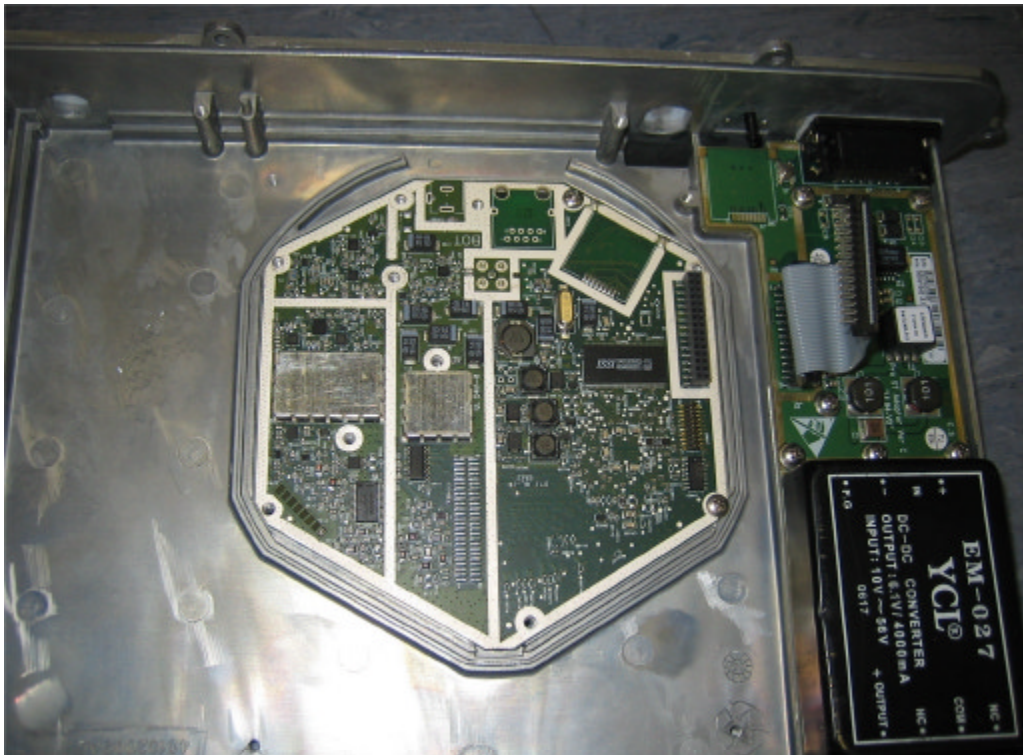
INTERNAL PHOTOGRAPHS

This document contains 9 photographs

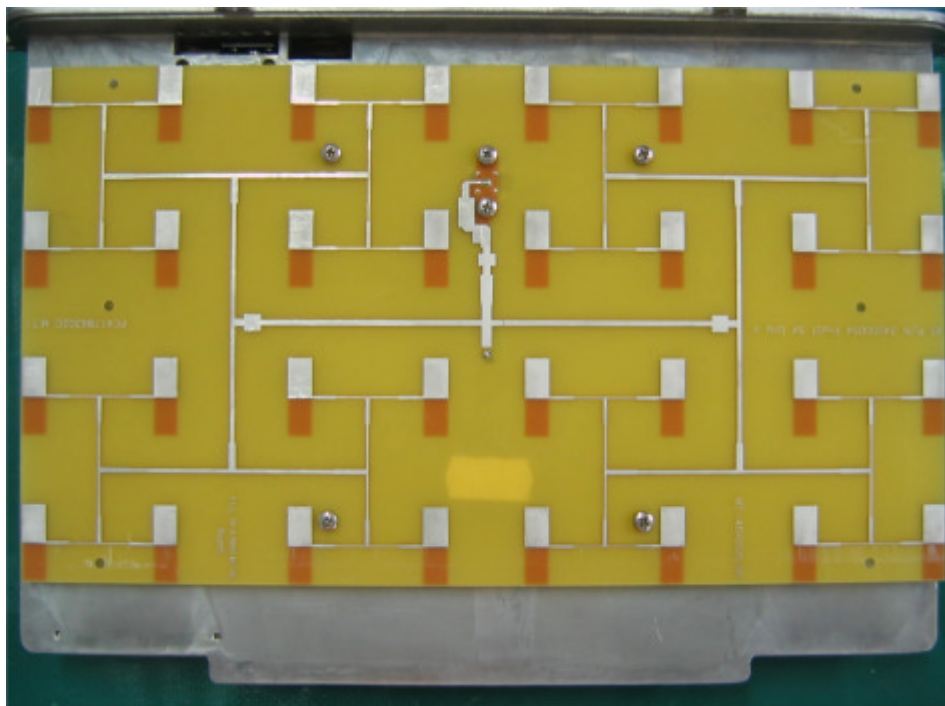
Photograph No.1
ProST internal view



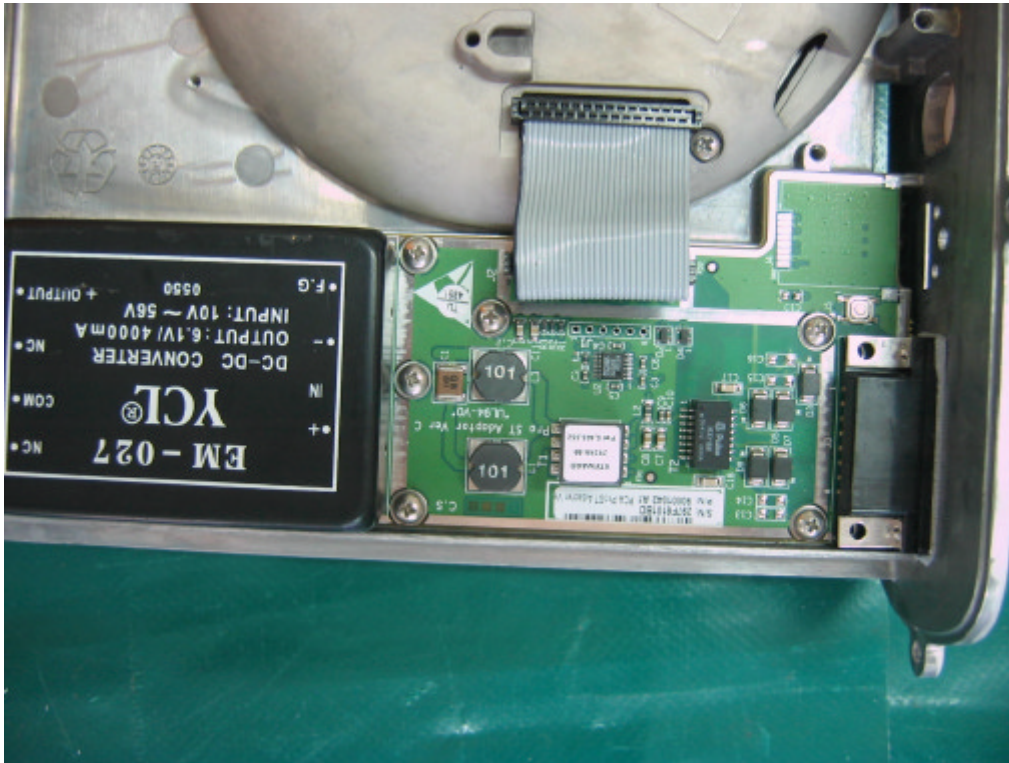
Photograph No.2
ProST internal view without cover



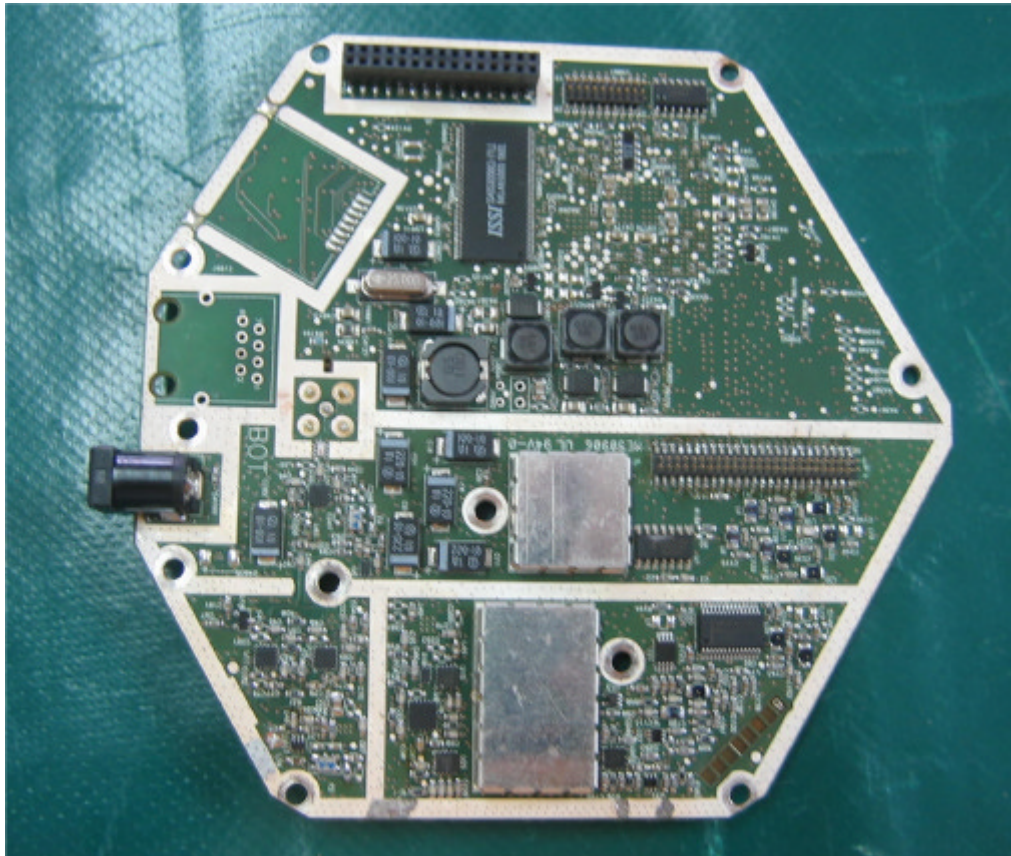
**Photograph No.3
ProST antenna view**



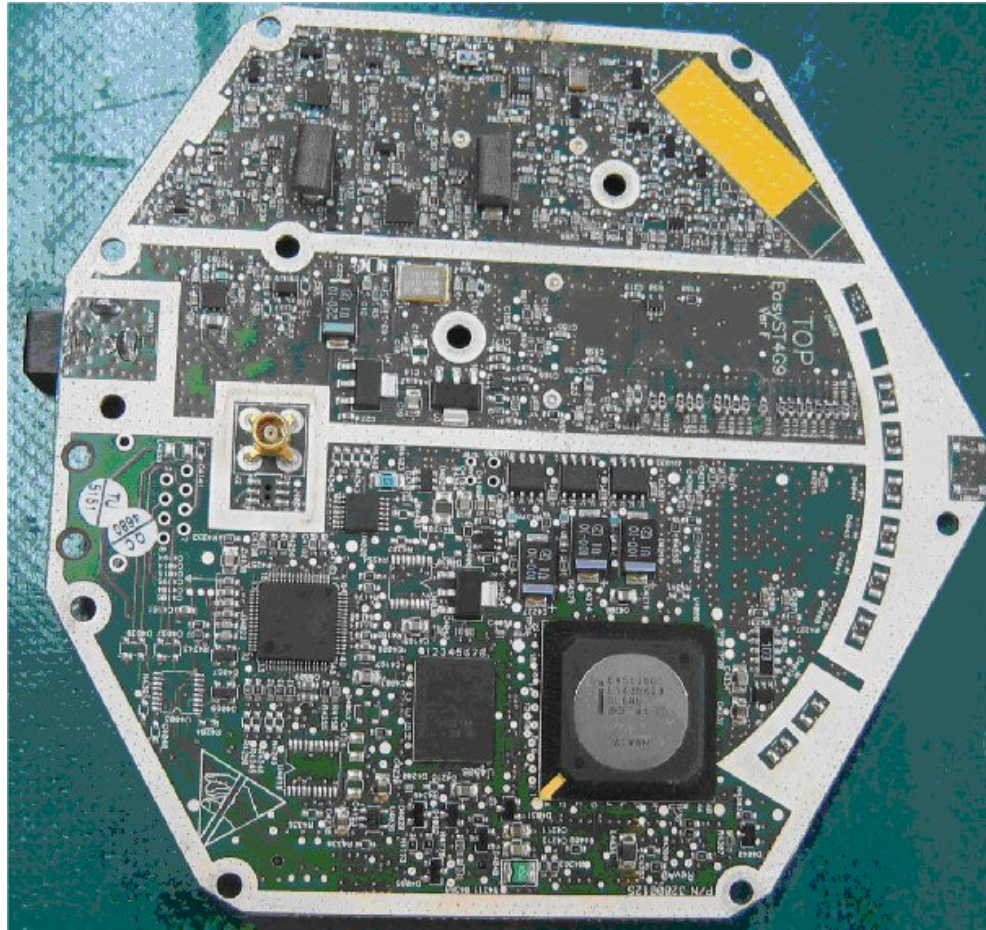
Photograph No.4
ProST internal view with adapter



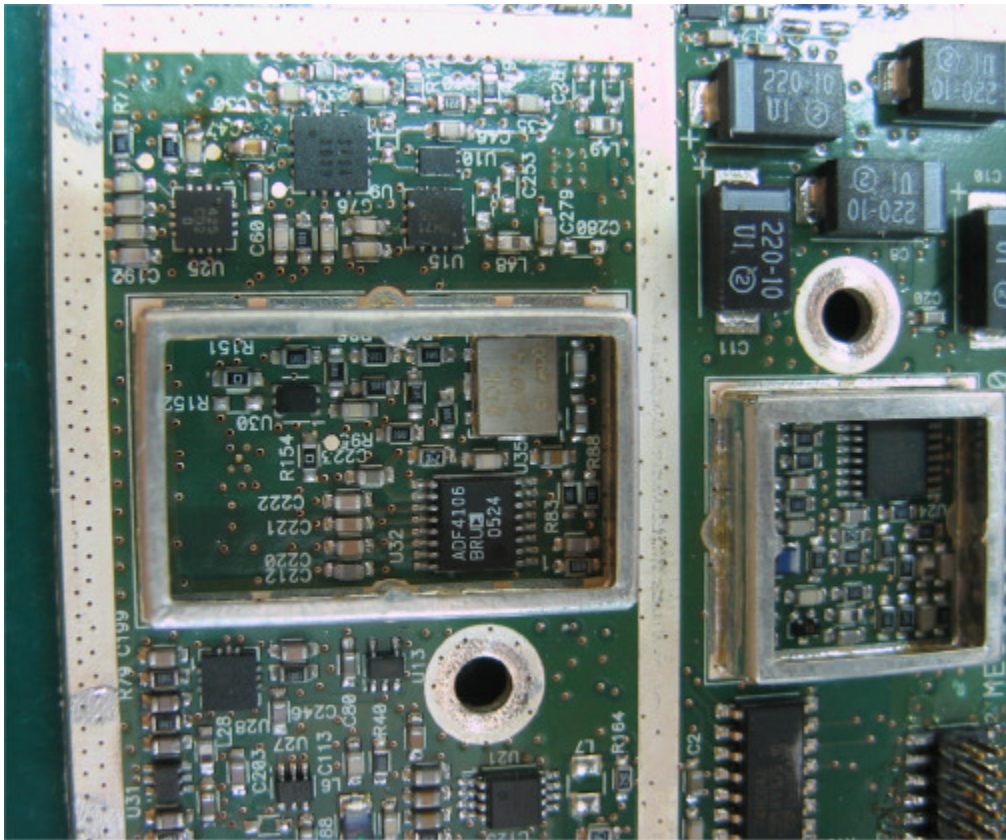
Photograph No.5
ProST PCB front view



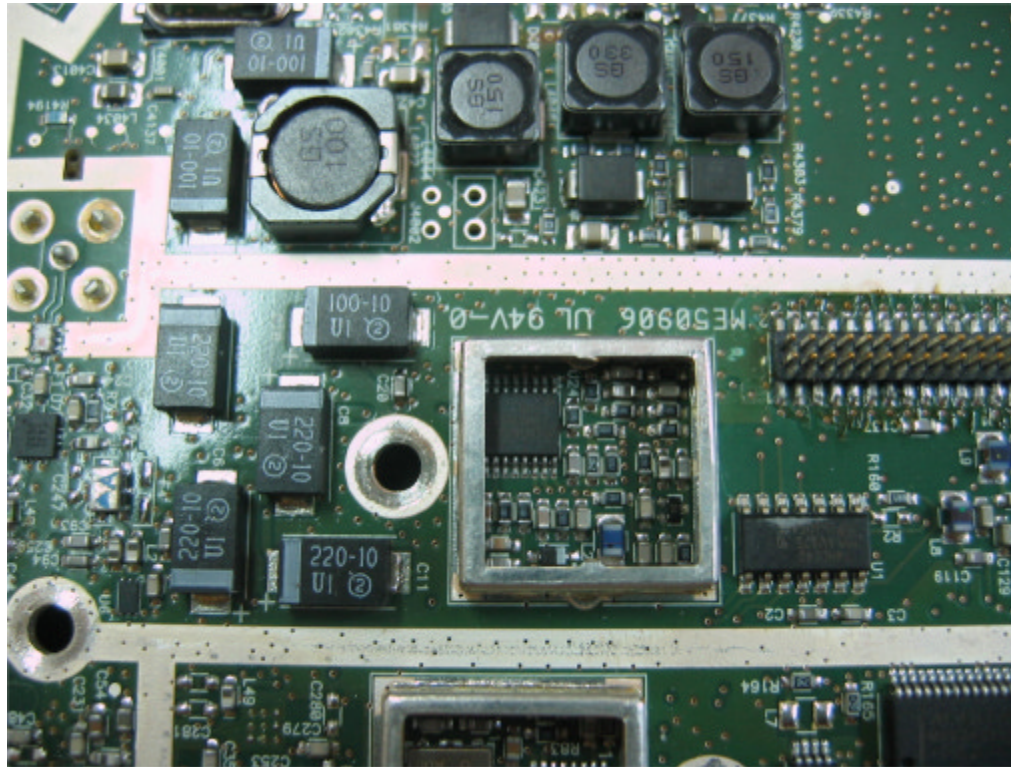
Photograph No.6
ProST PCB second side view



Photograph No.7
ProST PCB close view without shields



Photograph No.8
ProST PCB close view without shields



Photograph No.9
Digital PCB back side view

