



Telefication B.V.
Attn: Dept. FCC TCB
Edisonstraat 12A
6902 PK ZEVENAAR
The Netherlands

September 21, 2009

Dear Sir or Madam:

Airspan ProST and EasyST products are essentially the same in that they both utilize the exact same RF and Digital board (see attached photos) and exactly the same software.

The differences between the ProST and the EasyST are as follows:

1. They have a different backplane
2. The EasyST is powered by 6V DC and the ProST is powered by 48V DC (internally the ProST contains a DC to DC converter 48V to 6V).
3. The EasyST is an indoor CPE and the ProST is an outdoor CPE.

Sincerely,

A handwritten signature in black ink, appearing to be "Zion Levi".

Authorised Person

Zion Levi
Compliances & Testing Engineer
Airspan Communications Limited

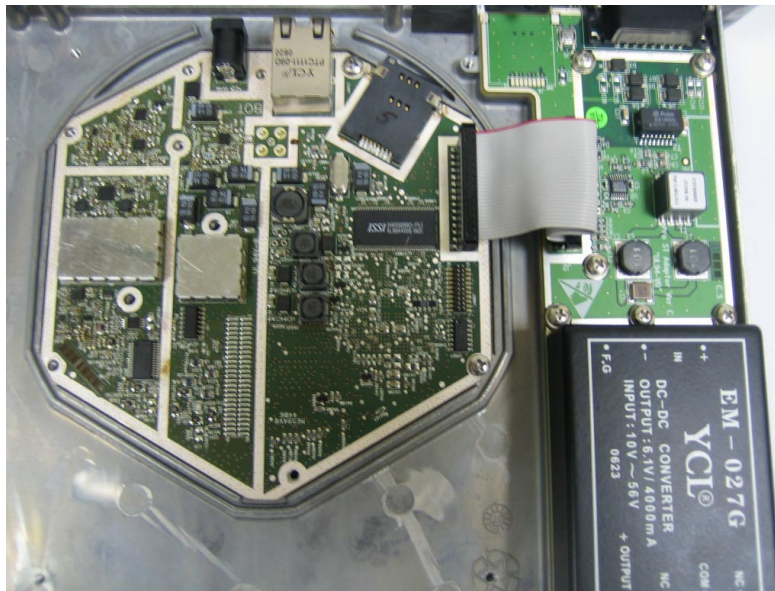
ProST



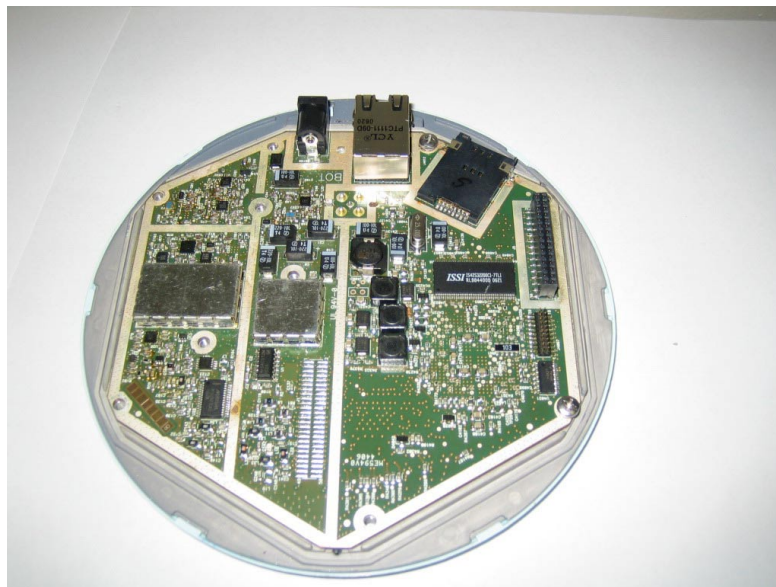
EasyST



ProST



EasyST



End