

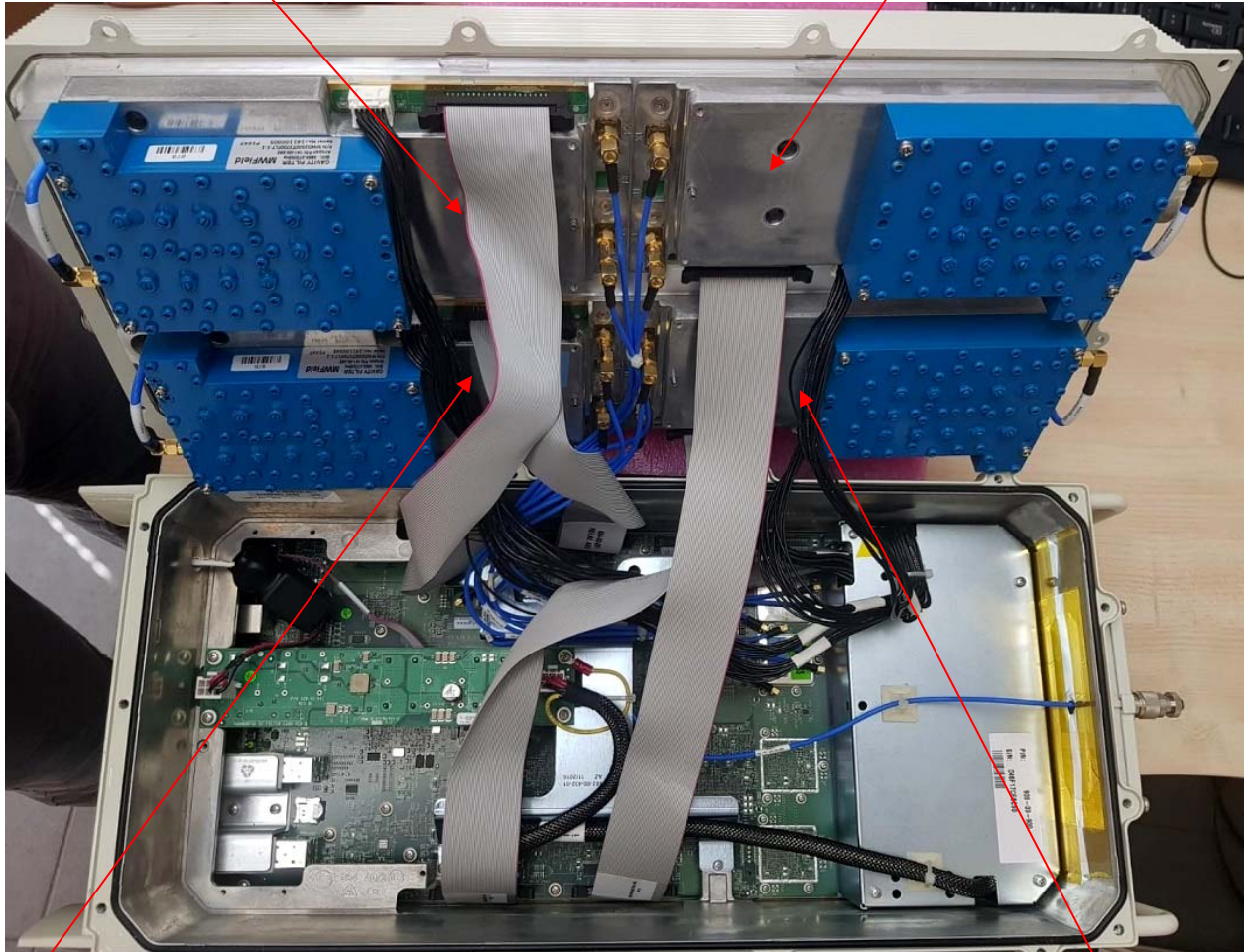
INTERNAL PHOTOGRAPHS

This document contains 9 photographs

Photograph No.1
"AirHarmony 4200" base station internal view

Transmitter 1

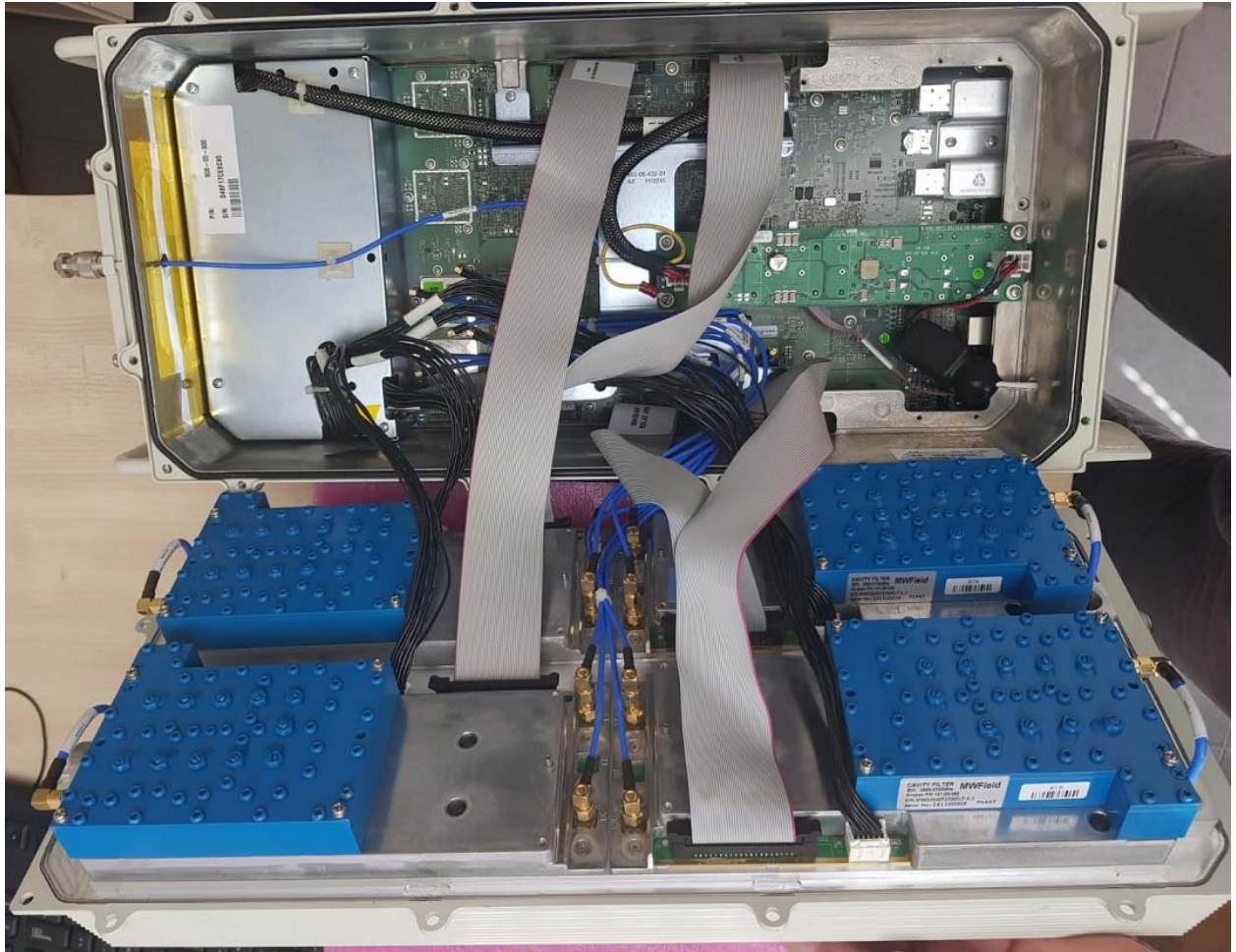
Transmitter 2



Transmitter 4

Transmitter 3

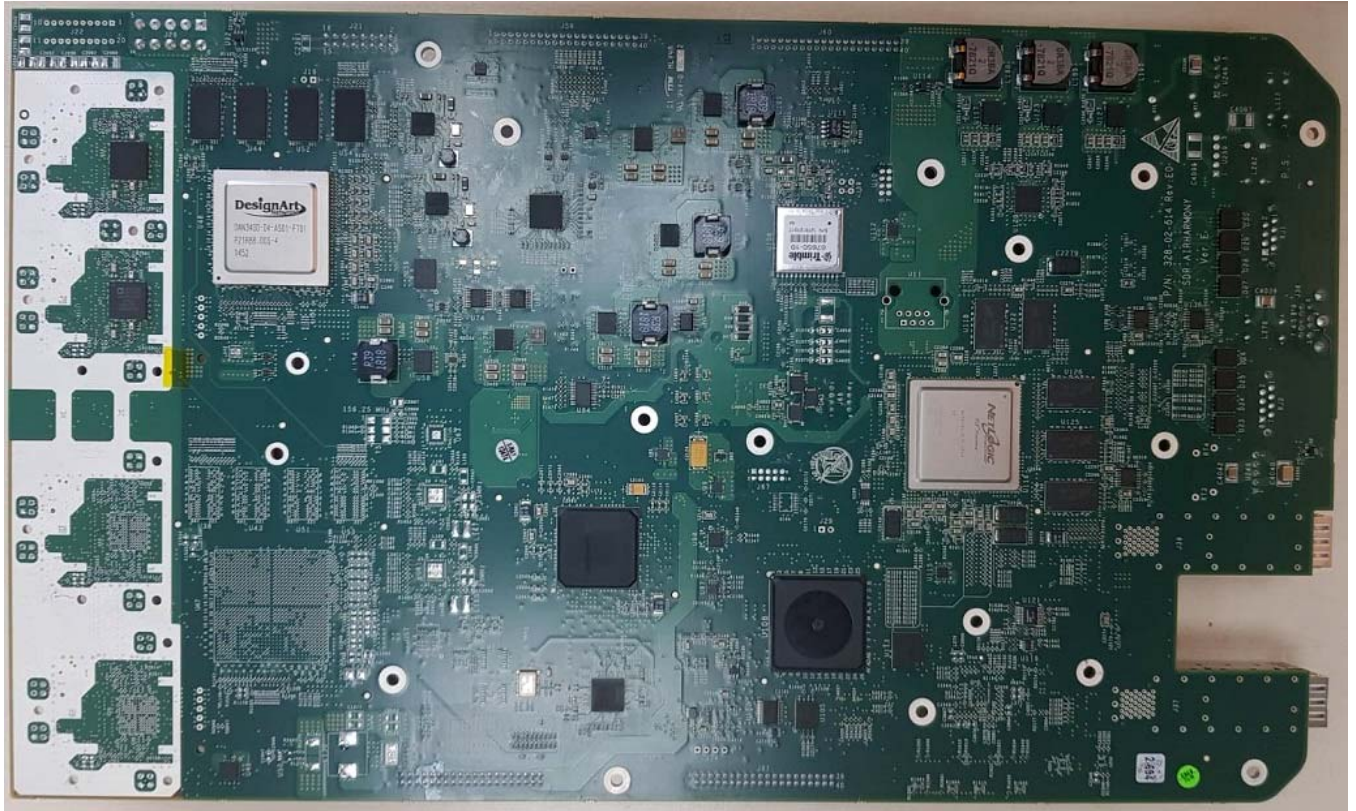
Photograph No.2
“AirHarmony 4200” base station internal view



Photograph No.3
“AirHarmony 4200” base station internal view



Photograph No.4
Main board front view



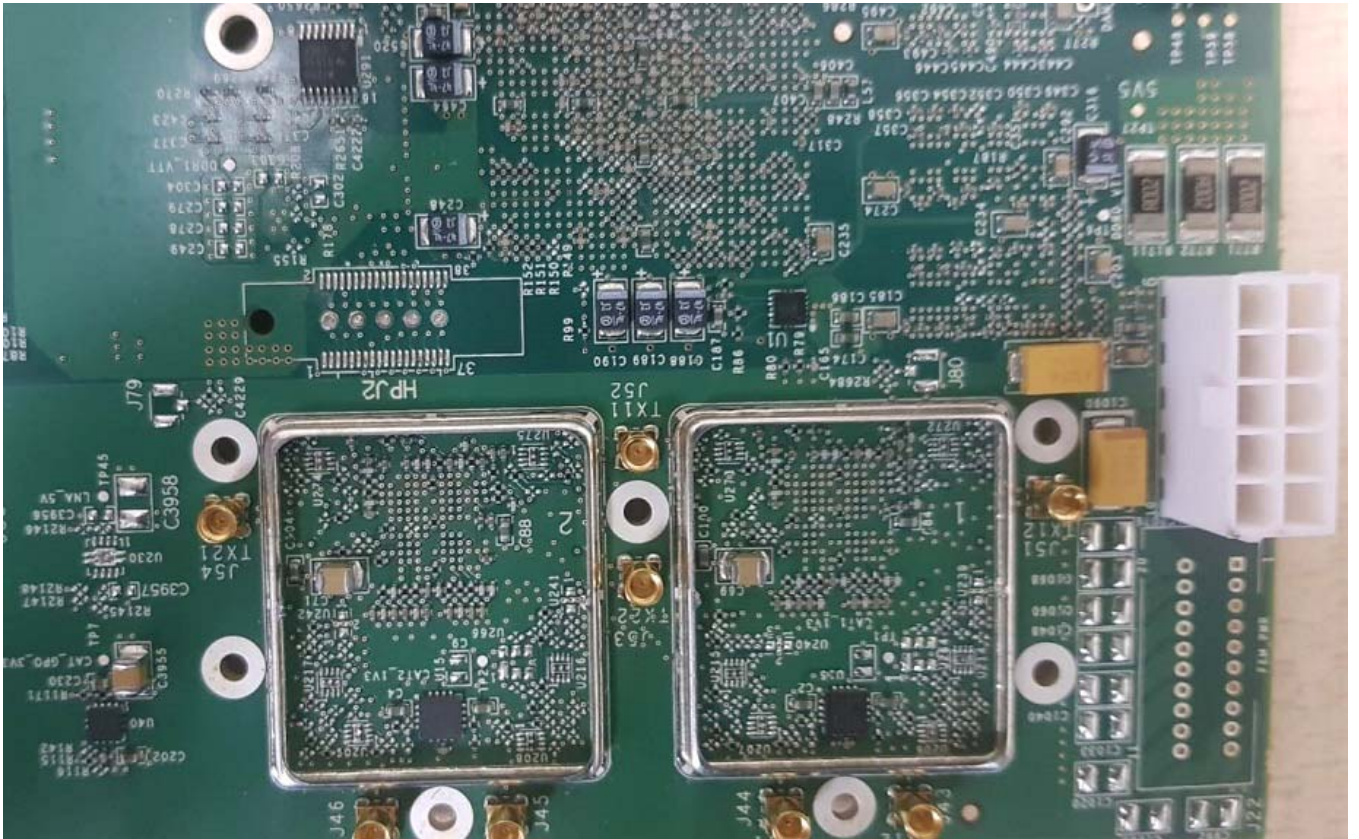
Photograph No.5
Main board second side view



Photograph No.6
Main board second side view with shields removed



Photograph No.7
RF PCB close view with shields removed



Photograph No.8
FEM device PA component side



Photograph No.9
FEM device PA print side

