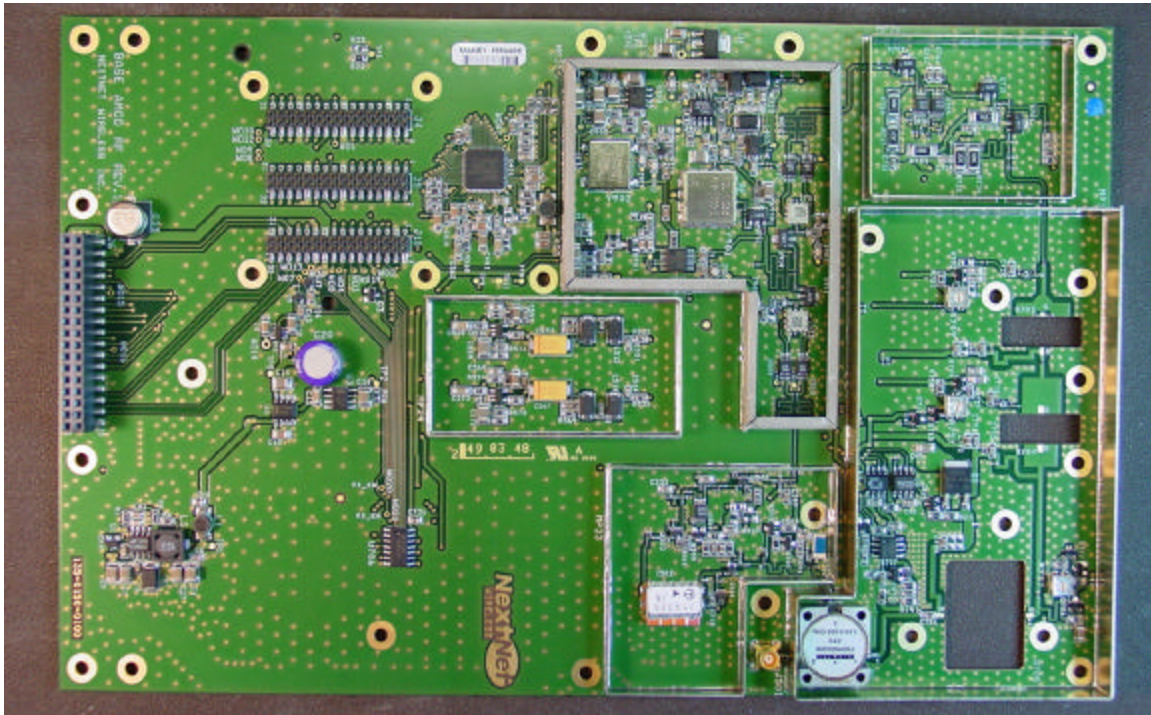
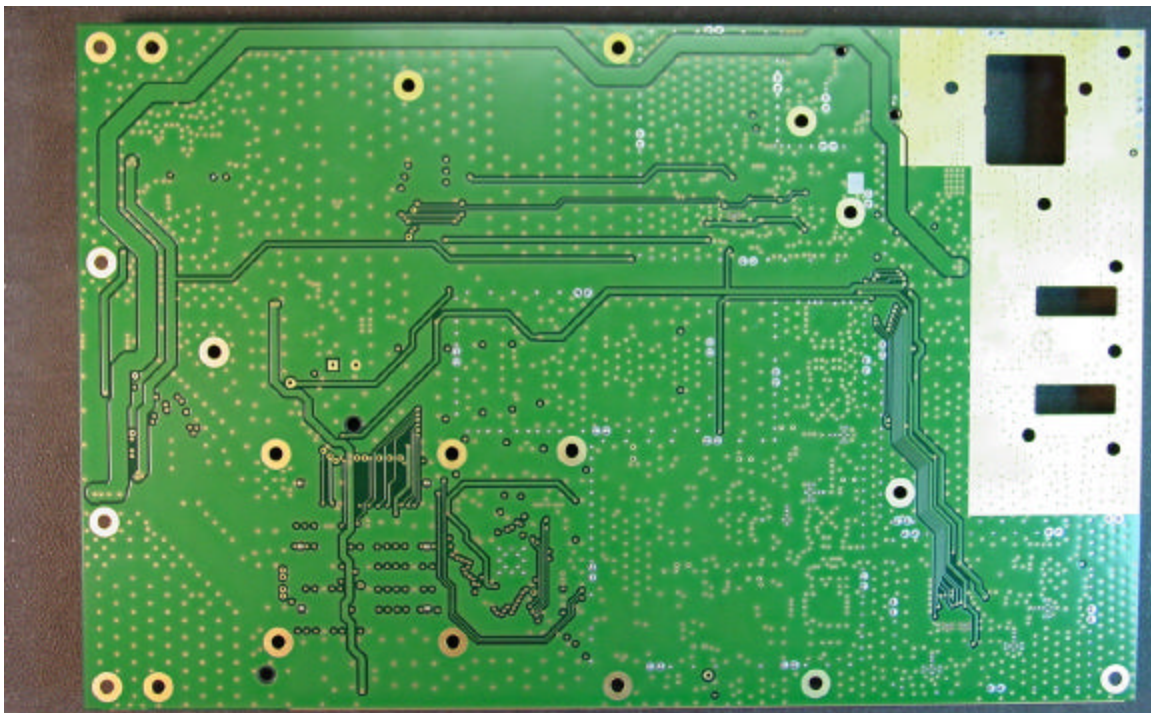


# **Exhibit 9**

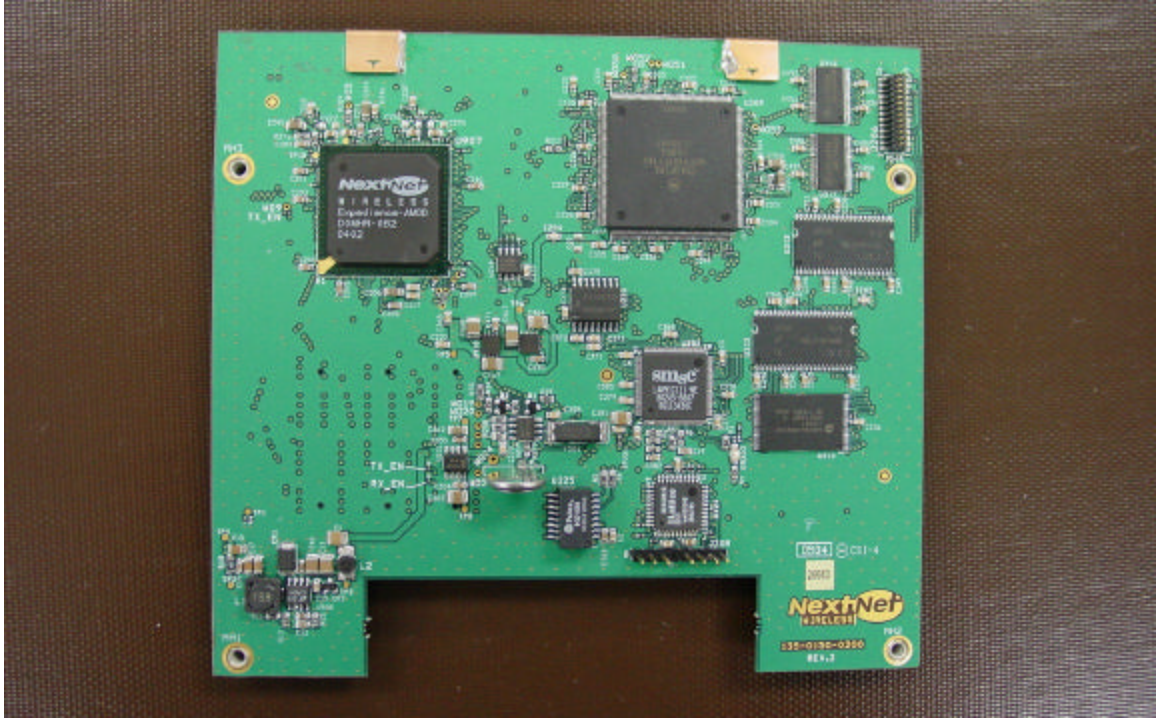
# Internal Photographs



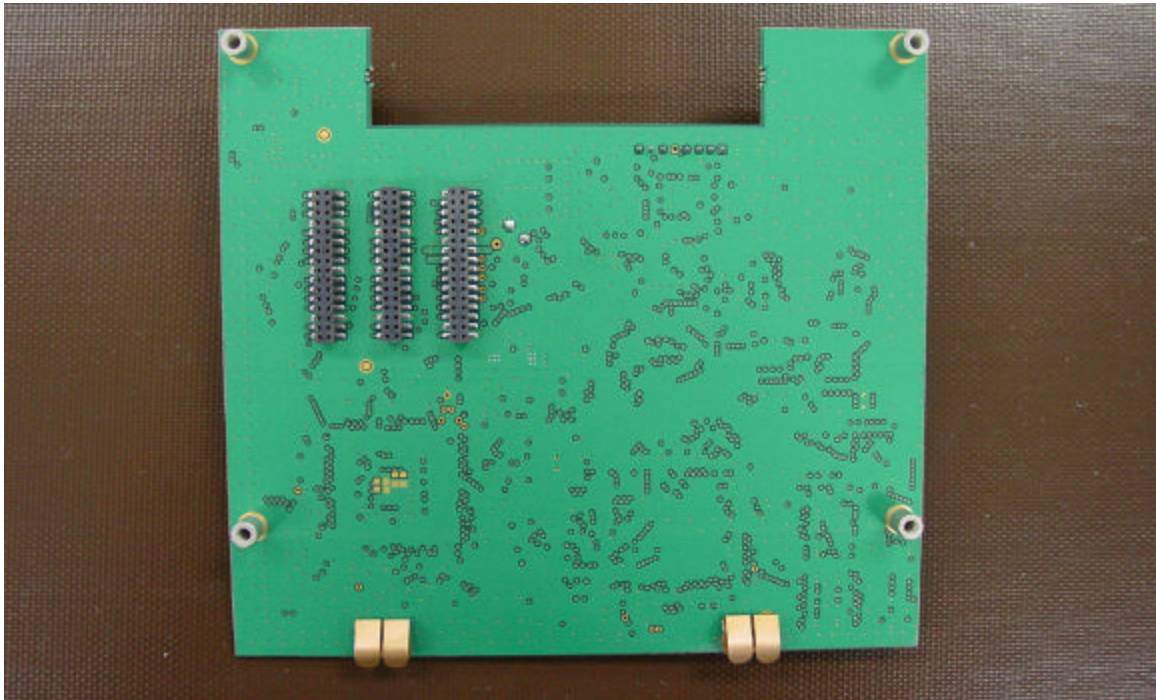
RF Board Component Side (no shields)



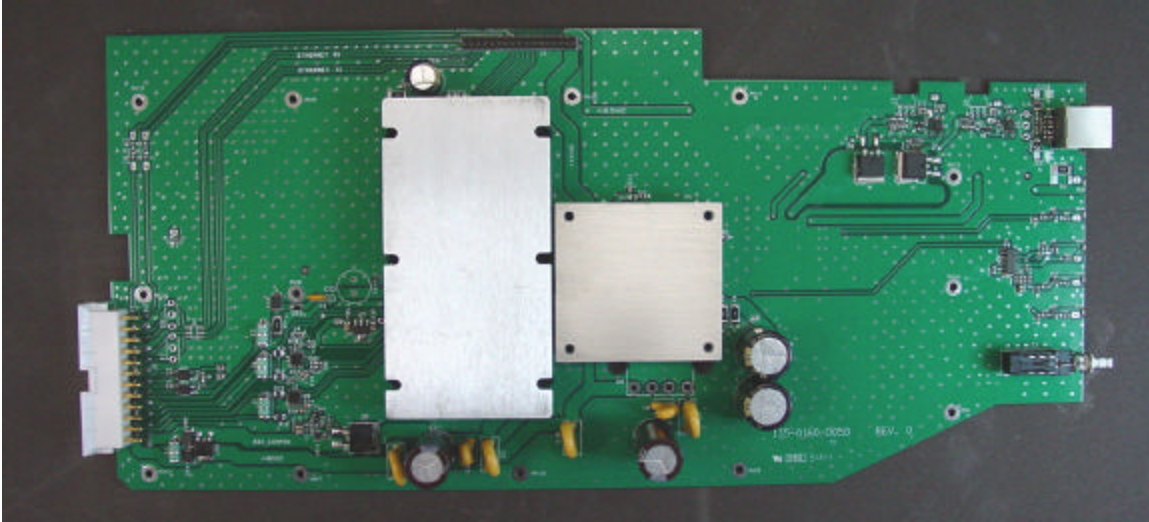
RF Board Solder Side



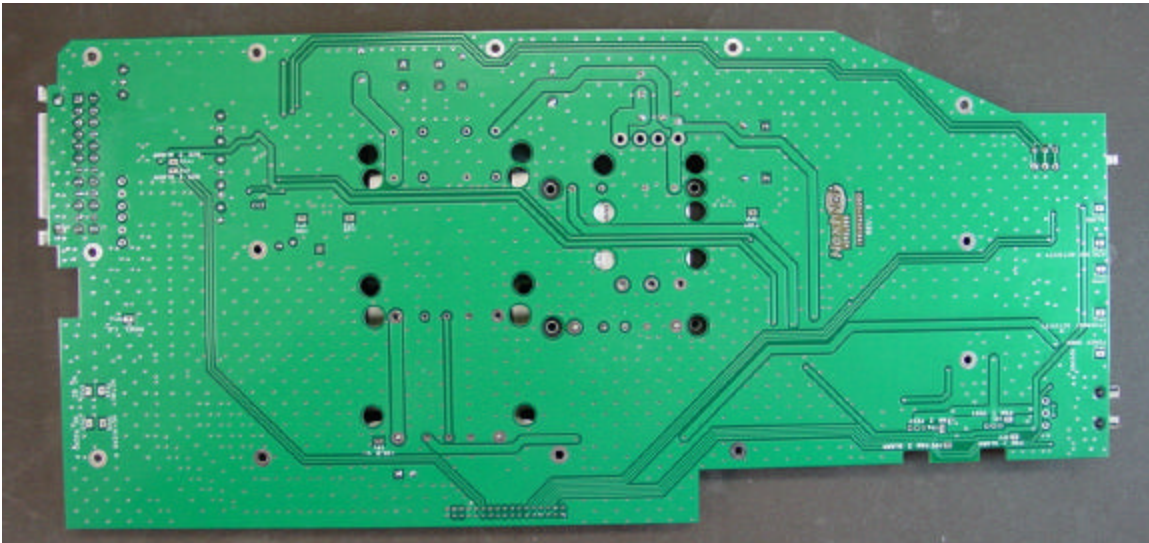
Logic Board Component Side



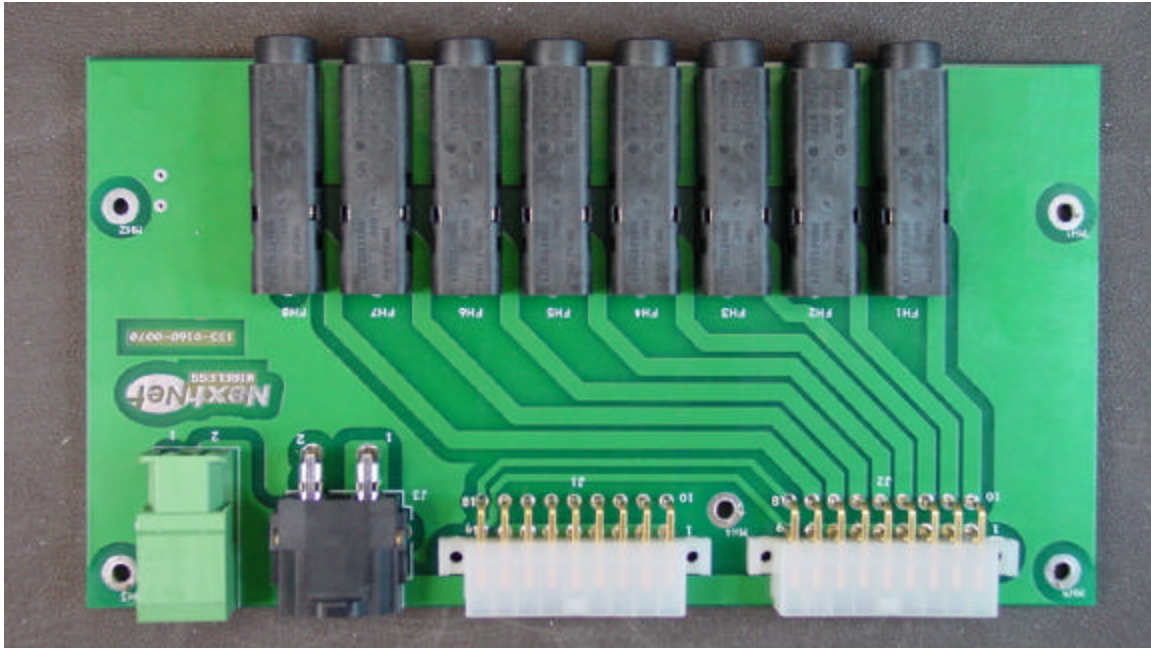
Logic Board Solder Side



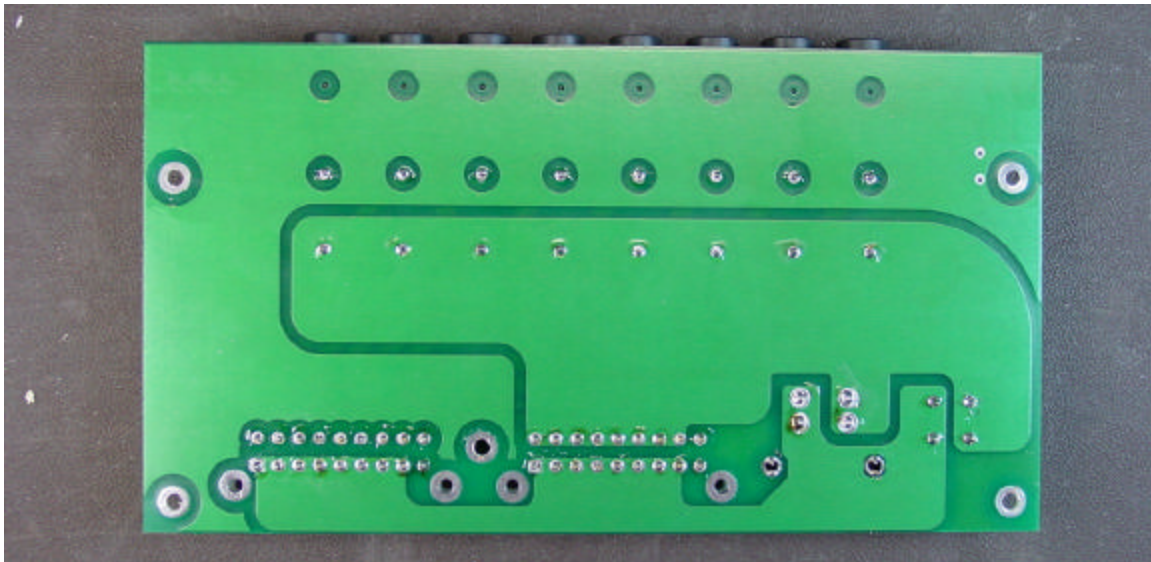
Power Supply Board Component Side



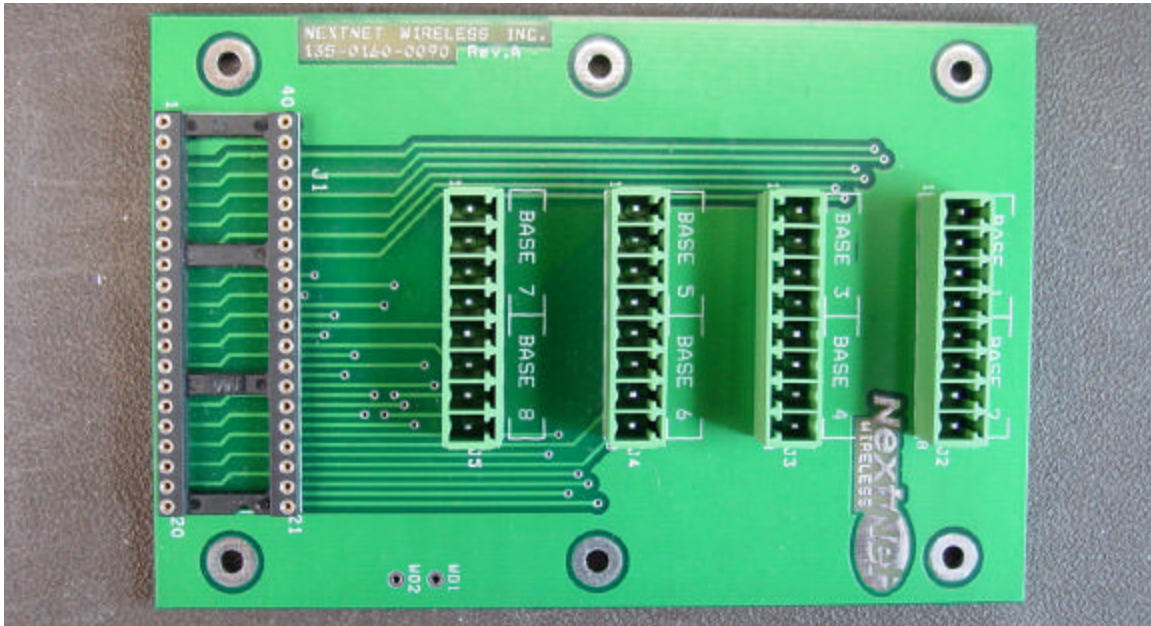
Power Supply Board Solder Side



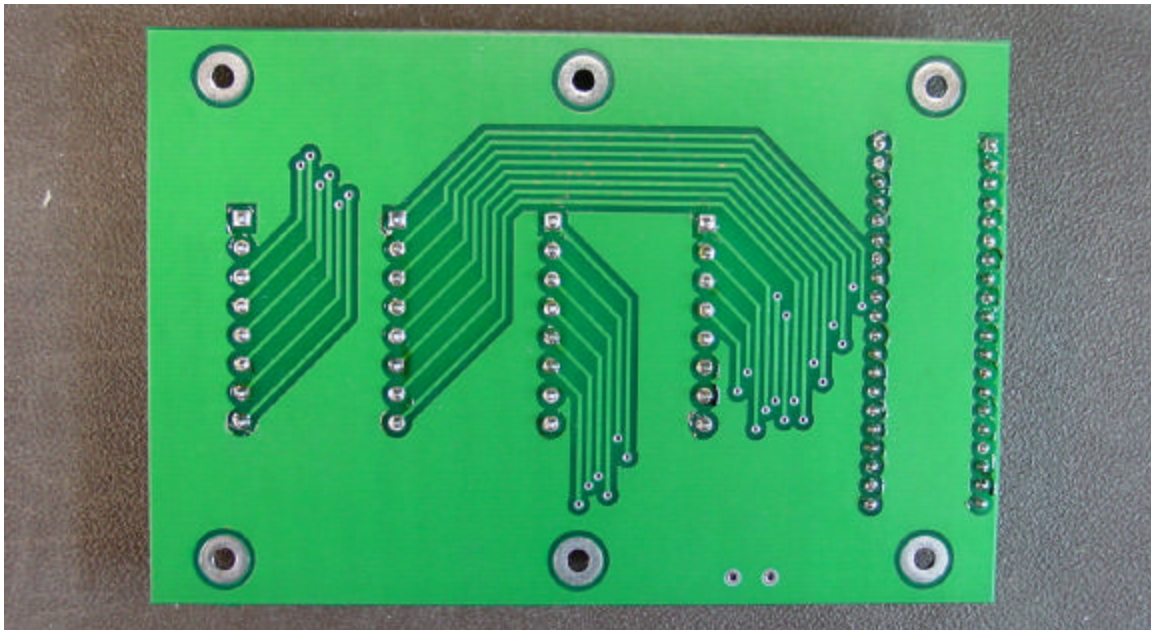
Power / Fuse Board Component Side



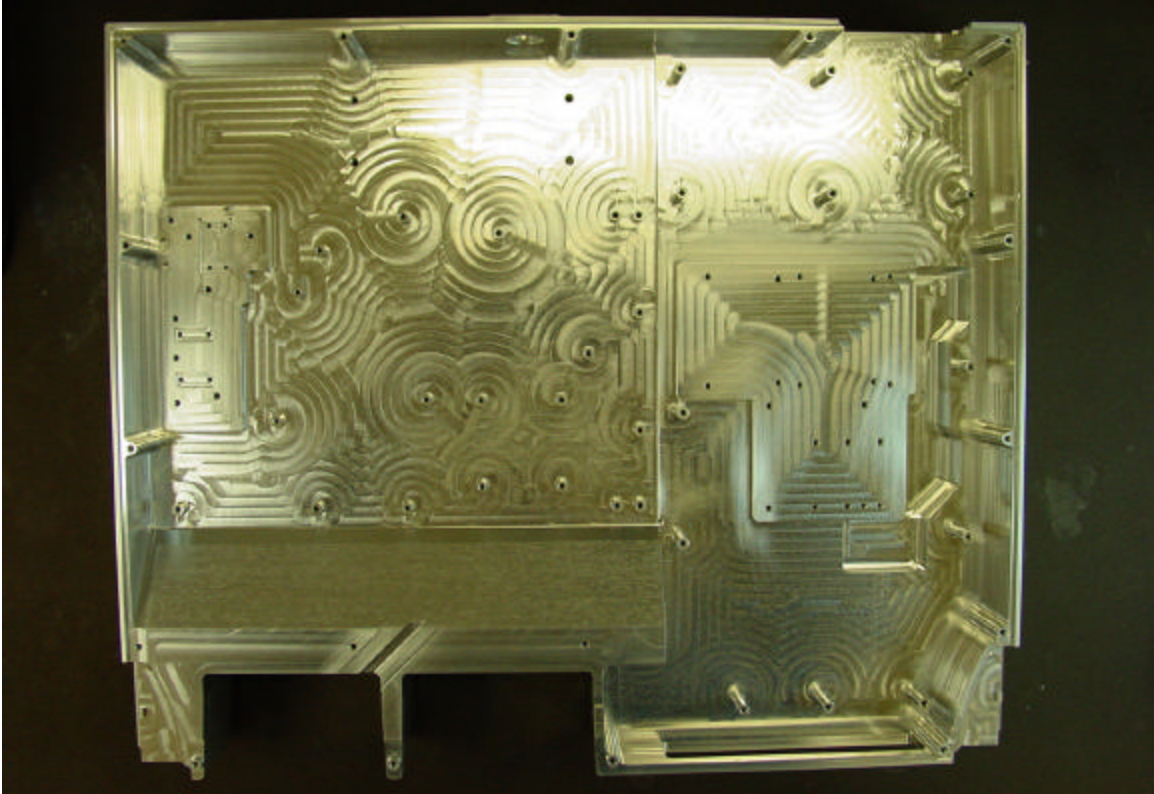
Power / Fuse Board Solder Side



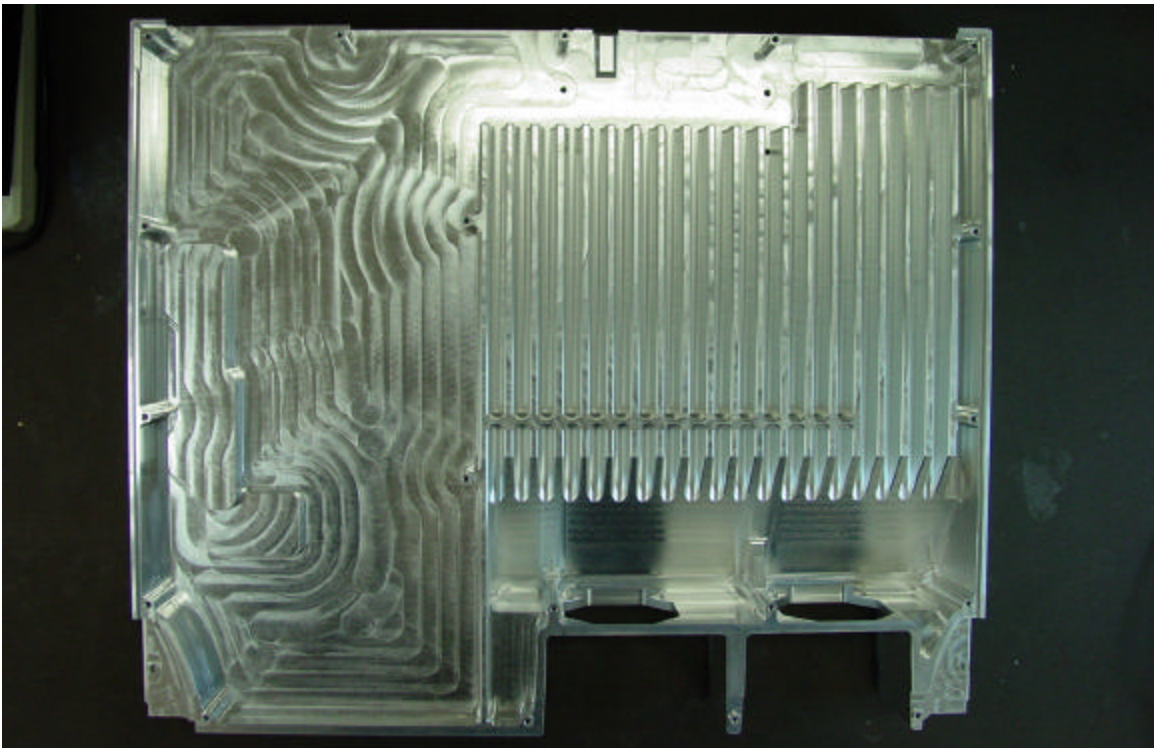
Alarm Connector Board Component Side



Alarm Connector Board Solder Side



Chassis Top View



Chassis Bottom View



Bottom Cover (outside)

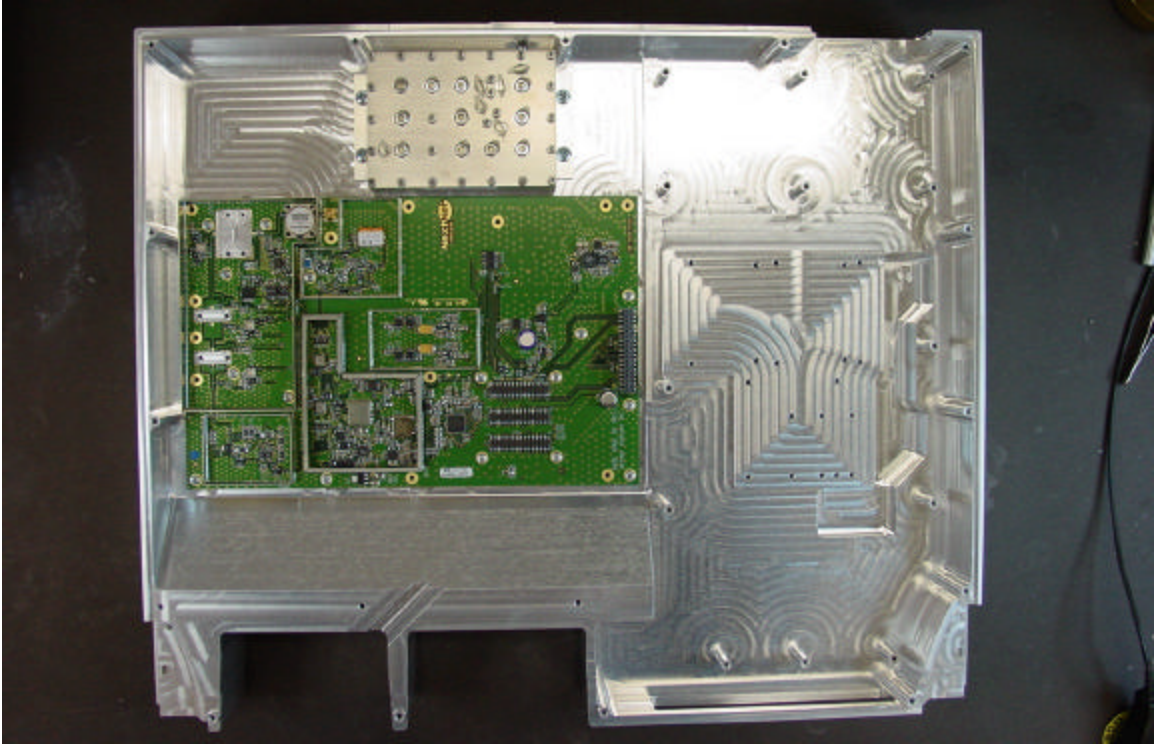
Top Cover (outside)



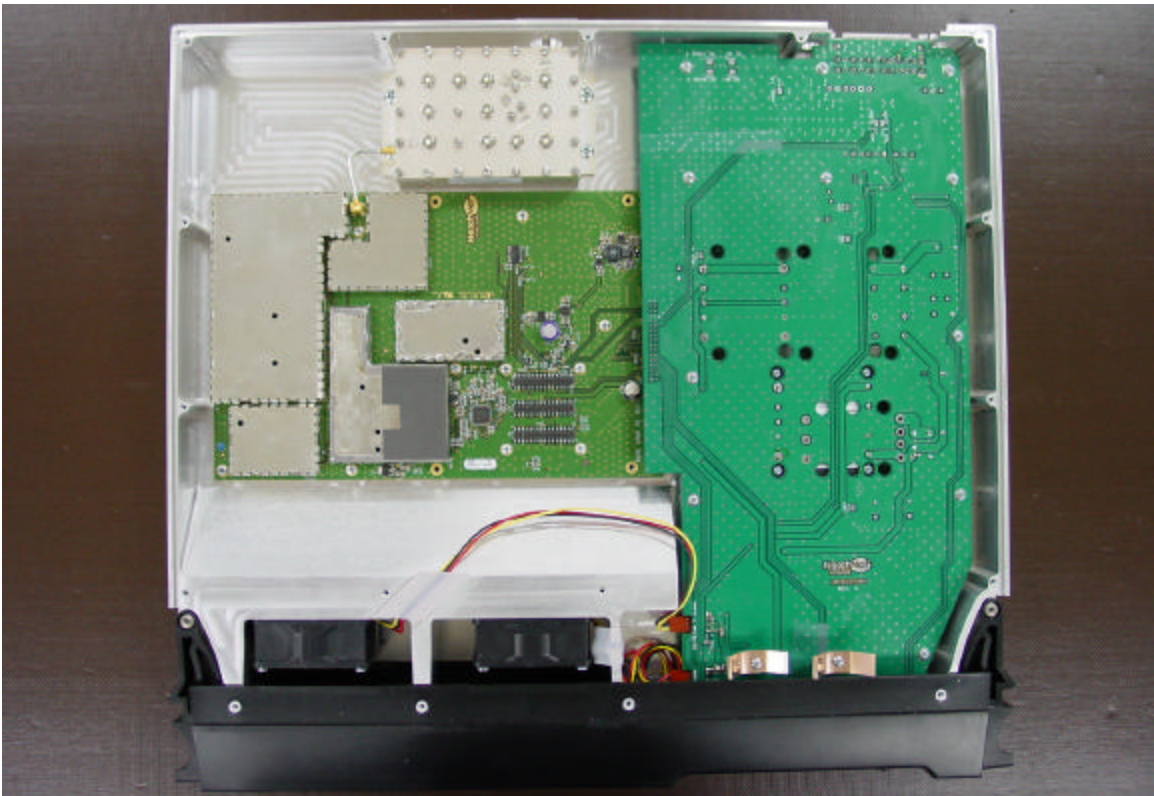
Bottom Cover (inside)

Top Cover (inside)

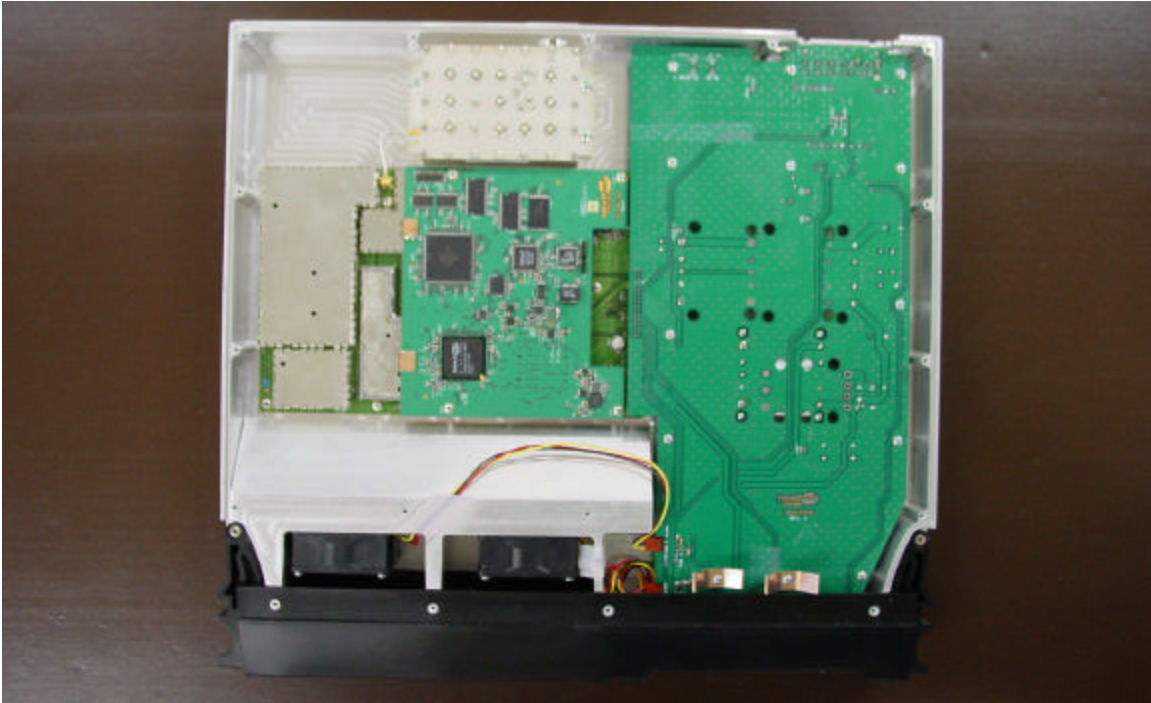




RF Board and RF Filter



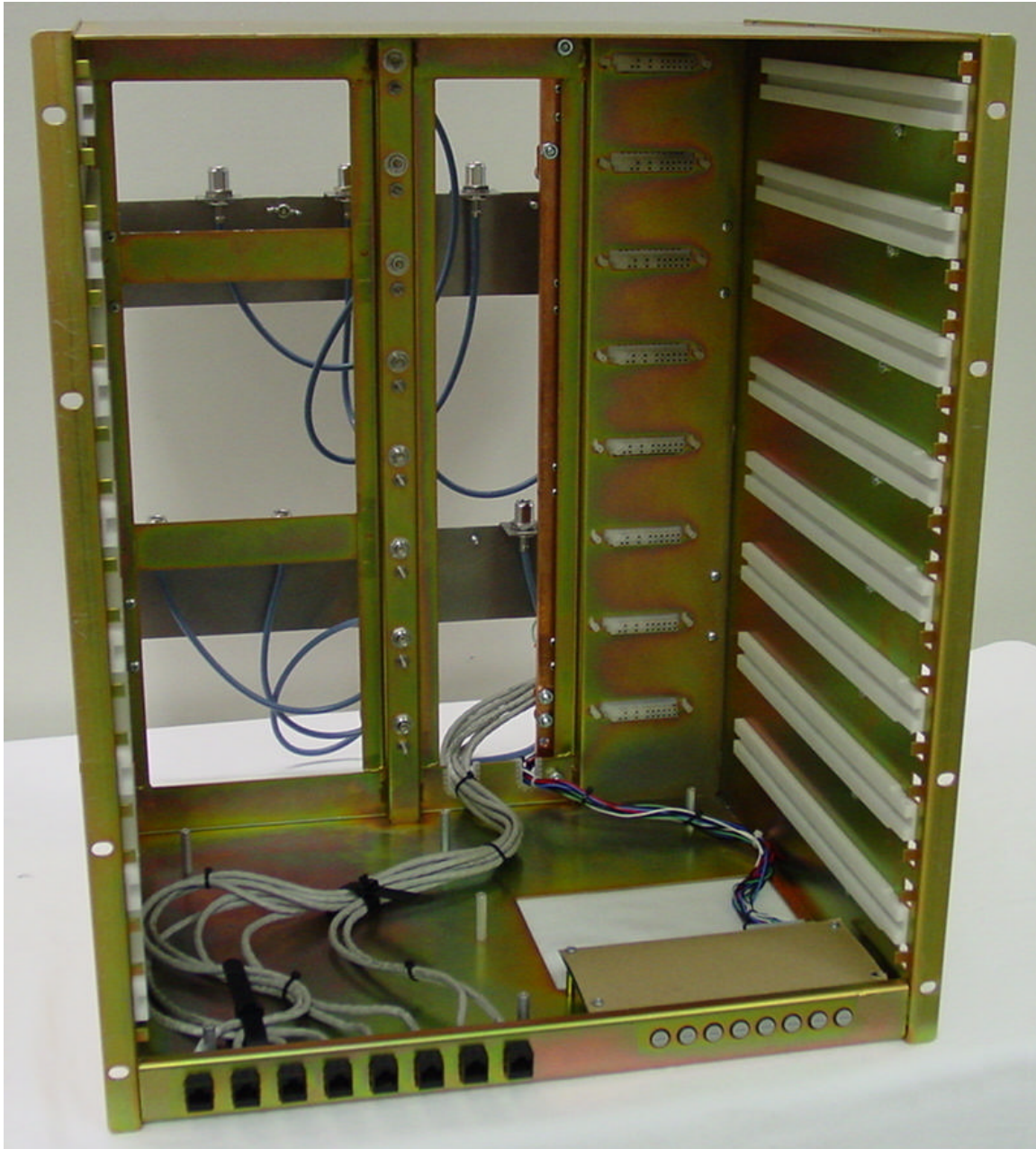
RF Board, RF Filter, Fans, Power Supply Board, and Front Cover



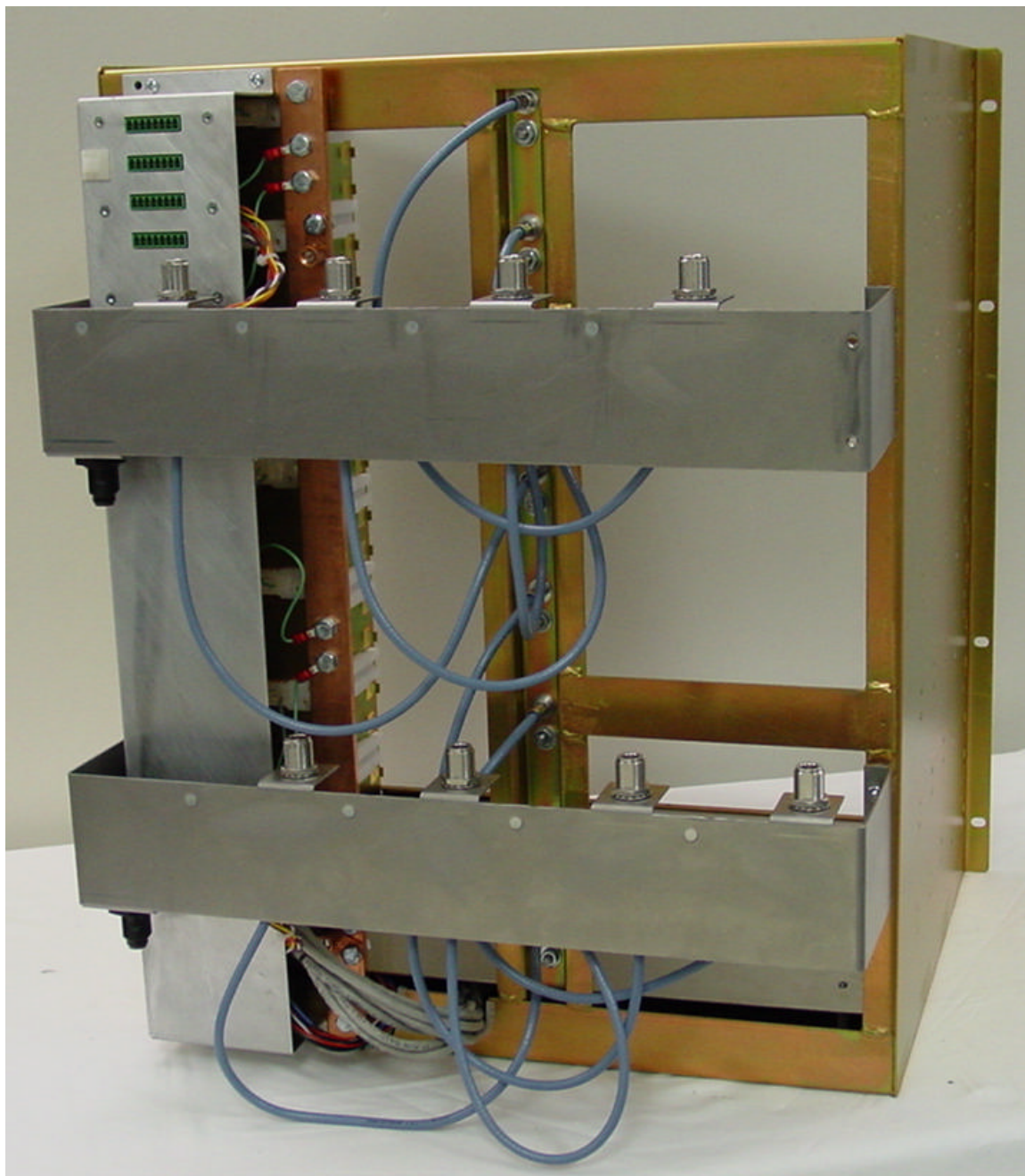
Logic Board, RF Board, RF Filter, Fans, Power Supply Board, and Front Cover



Complete Transceiver



Rack Chassis Front View



Rack Chassis Back View