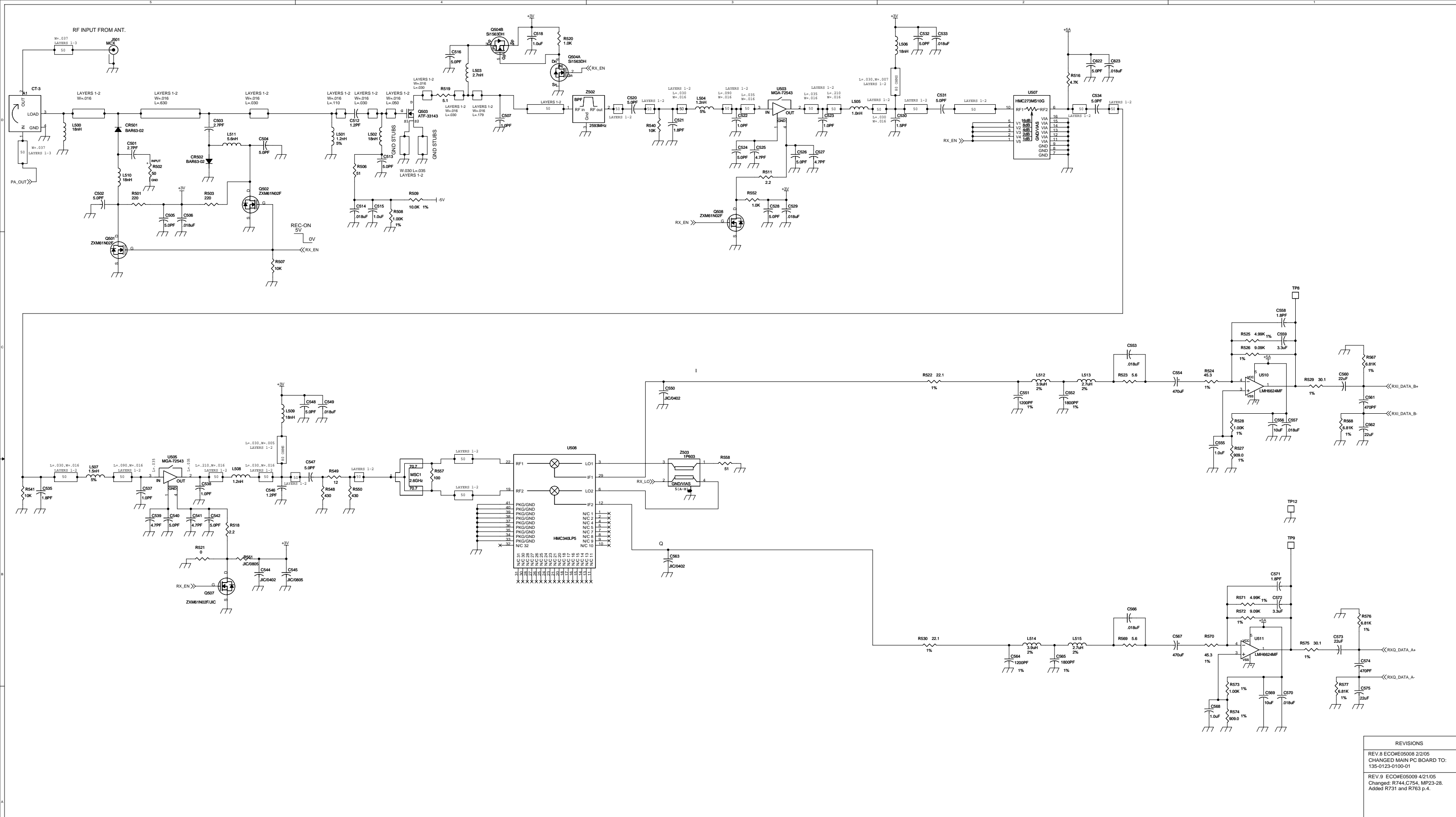


Exhibit 5

Schematic Diagrams



THIS IS A COMMON PCB LAYOUT TO BE FOR MULTIPLE BASE STATION RF BOARD PRODUCTS.

| SCHEMATIC NUMBER | REV.LEVEL | BOM REFERENCE | TITLE |
|-----------------------------|-----------|---------------|--------------------------|
| (CORE DESIGN) 125-0123-0100 | 2 | 123-0123-0100 | A-MOD 2.3-2.5GHz BASE RF |
| 125-0150-0100 | 9 | 123-0150-0100 | A-MOD 2.6GHz BASE RF |

| SUPPLY VOLTAGE DEFINITIONS | |
|----------------------------|----------------------------------|
| NAME | DESCRIPTION |
| +18V | RAW VOLTAGE FROM POWER SUPPLY |
| +10VTX | CONTINUES VOLTAGE TO TX SWIT |
| V18S | SWITCHED VOLTAGE TO PA |
| +V1TX | CONTINUES VOLTAGE TO 18V TX SWIT |
| +V5S | SWITCHED VOLTAGE TO EXCITER |
| +10V5W1N | CLEAN VOLTAGE TO SYNTHESIZER |
| +6V | TO LINEAR REGULATORS LEADS |
| +5A | VOLTAGE TO ALL LINEAR CIRCUITS |
| +5VC | CLEAN TO SPECIAL LINEAR CIRCUITS |
| +3V | |
| +5V | |
| GND | ALL SIGNALS |

| REVISIONS | |
|---------------------------|--|
| REV. 8 ECO#E05008 2/2/05 | CHANGED MAIN PC BOARD TO: 135-0123-0100-01 |
| REV. 9 ECO#E05009 4/21/05 | Changed: R744, C754, MP23-28. Added R731 and R763 p.4. |

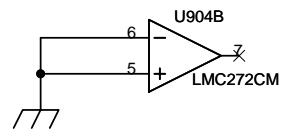
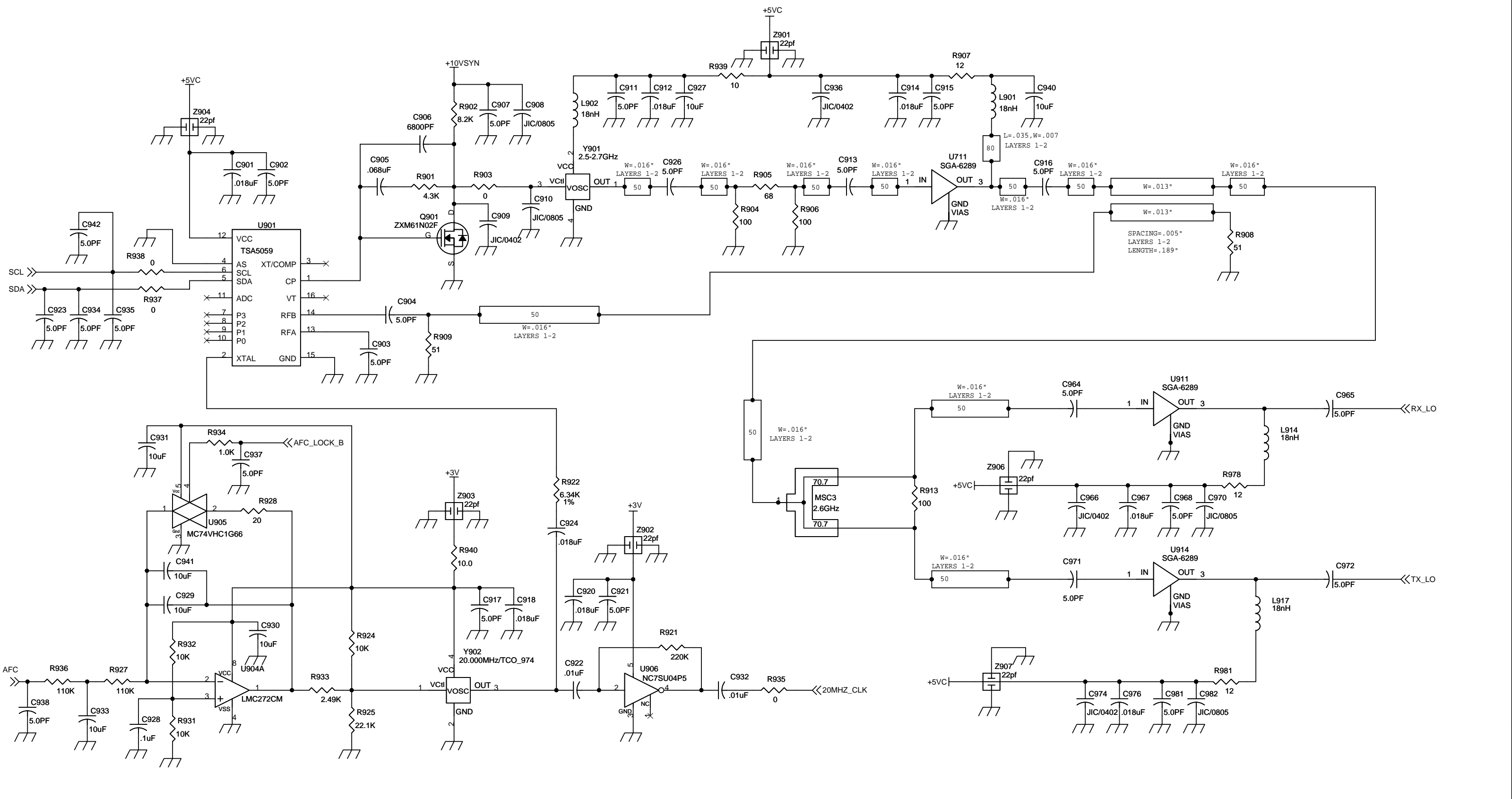
Varient Name = «Core Design»
 Last Revision: 4/21/05
 Company Confidential

C:\PROJECTS\SR150150-0150-0100-04\135-0150-0100-08.DSN

A-MOD 2.6 GHz BASE RF - Receiver Section

| Size | Document Number | NextNet Wireless Inc. | Rev |
|------|-----------------|-----------------------|-----|
| D | 125-0150-0100 | | 9 |

Date: Friday, April 22, 2005 Sheet 1 of 6



REFERENCE DESIGNATOR ASSIGNMENTS:
 VCO/SYNTHESIZER = 900's
 TRANSMITTER = 700-899's
 RECEIVER = 500-699's
 INTERFACE = 0-199's
 LOGIC = 200-499's

SUPPLY VOLTAGE DEFINITIONS

| NAME | DESCRIPTION |
|---------|----------------------------------|
| +18V | RAW VOLTAGE FROM POWER SUPPLY |
| +10VTX | CONTINUES VOLTAGE TO TX SWT |
| V10S | SWITCHED VOLTAGE TO PA |
| 5VTX | CONTINUES VOLTAGE TO 5VTX SWT |
| V5S | SWITCHED VOLTAGE TO EXCITER |
| +10VSYN | CLEAN VOLTAGE TO SYNTHESIZER |
| +6V | TO LINEAR REGULATORS/ LEDS |
| +5A | VOLTAGE TO ALL LINEAR CIRCUITS |
| +5VC | CLEAN TO SPECIAL LINEAR CIRCUITS |
| +3V | |
| -5V | |
| GND | ALL SIGNALS |

Variant Name = <Core Design>
 Last Revision: 4/21/05
 Company Confidential

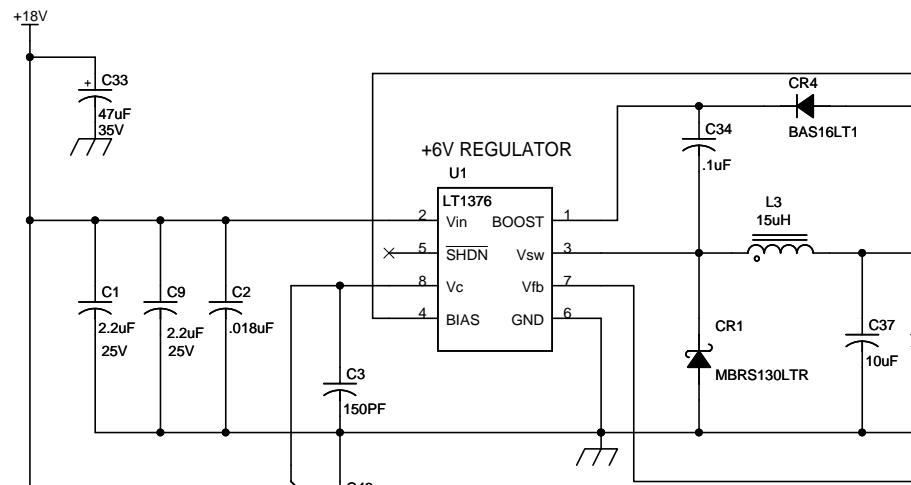
C:\PROJECTS\RLS\0150\135-0150-0100-04\135-0150-0100-09.DSN

Title
A-MOD 2.6 GHz BASE RF - VCO/SYNTHESIZER

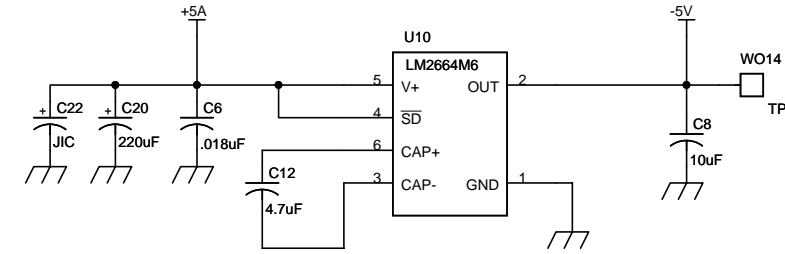
| | | |
|------|-----------------|-----|
| Size | Document Number | Rev |
| | 125-0150-0100 | 9 |

Date: Friday, April 22, 2005 Sheet 2 of 6

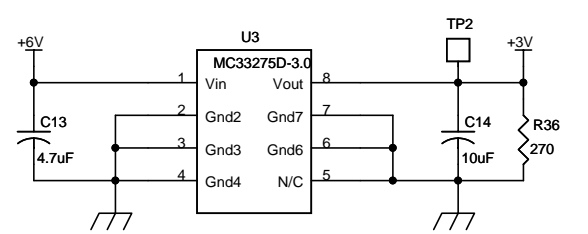
DC INPUT +18V



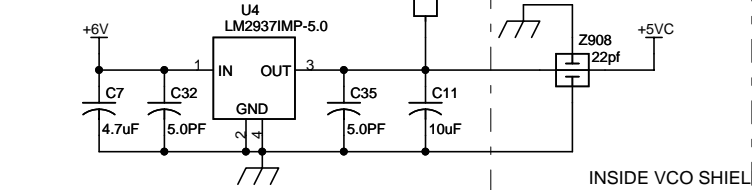
NEG 5V OUTPUT/160mA



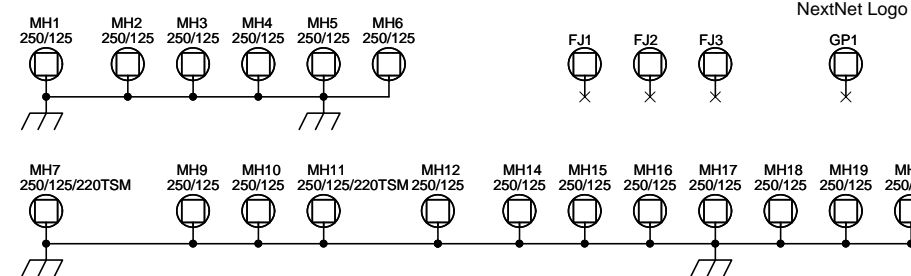
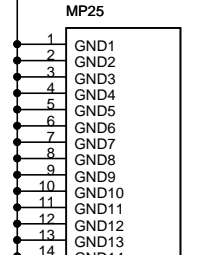
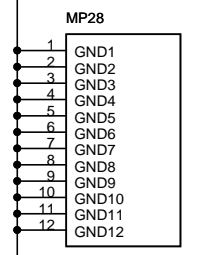
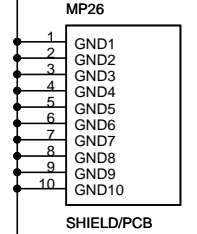
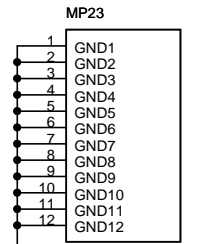
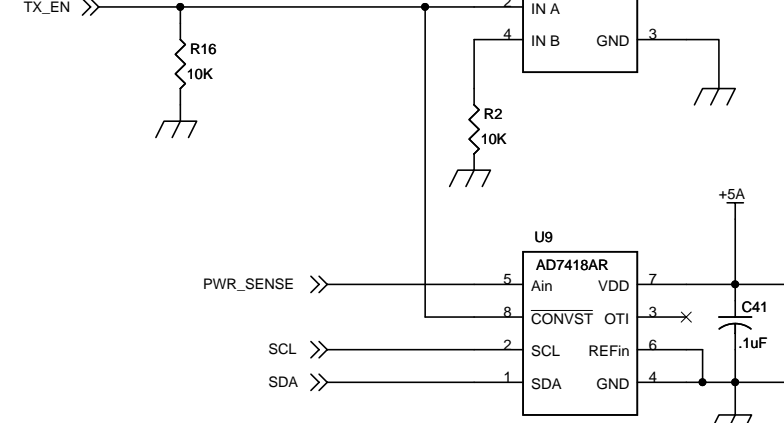
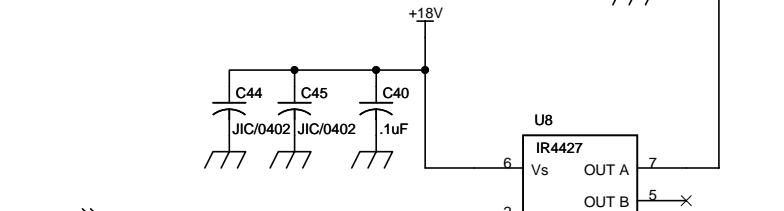
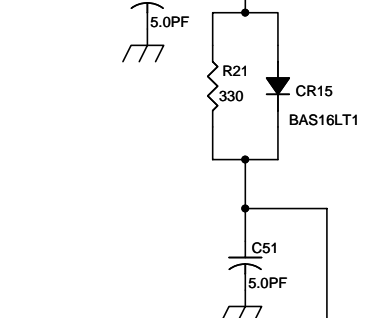
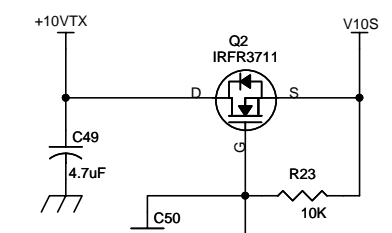
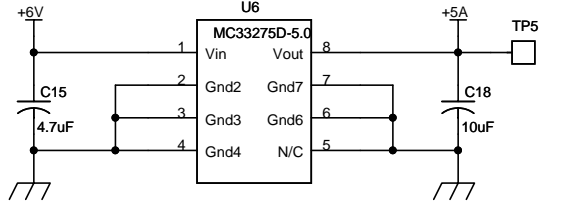
+3V REGULATOR



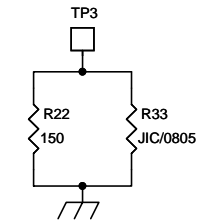
+5V ANALOG (CLEAN)



+5V REGULATOR



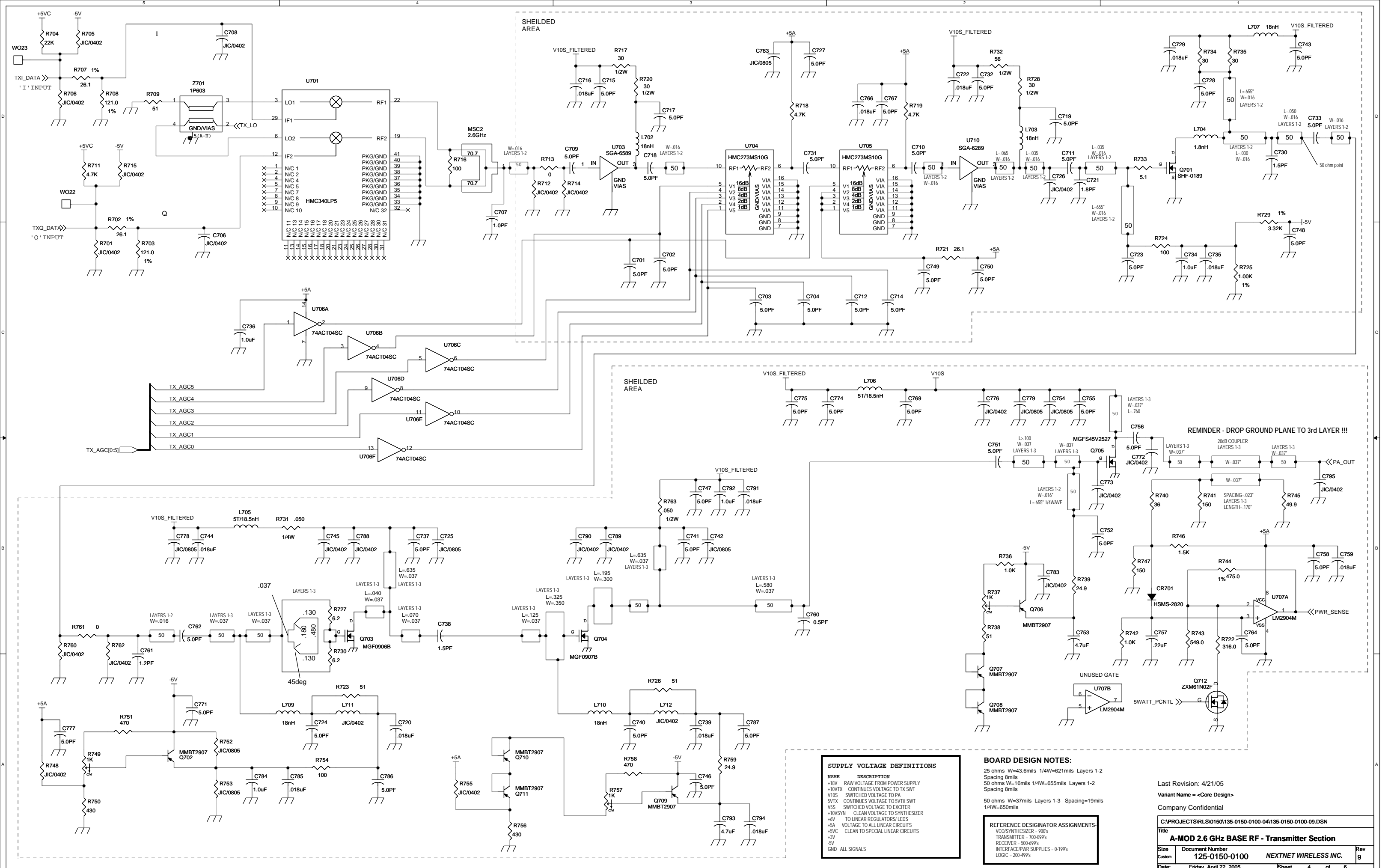
PRODUCT IDENTIFIER



Last Revision: 4/21/05
Variant Name = <Core Design>

Company Confidential

| | | | |
|--|---|-----------------------|----------|
| C:\PROJECTS\I\150135-0150-0100-04\135-0150-0100-09.DSN | | | |
| Title A-MOD 2.6 GHz BASE RF - Power Supply Section | | | |
| Size Custom | Document Number 125-0150-0100 | NEXTNET WIRELESS INC. | Rev 9 |
| Date: | Friday, April 22, 2005 | Sheet 3 | of 6 |



SUPPLY VOLTAGE DEFINITIONS

| NAME | DESCRIPTION |
|--------|----------------------------------|
| +18V | RAW VOLTAGE FROM POWER SUPPLY |
| +10VTX | CONTINUES VOLTAGE TO TX SWT |
| V10S | SWITCHED VOLTAGE TO PA |
| SVTX | CONTINUES VOLTAGE TO SVTX SWT |
| VSS | SWITCHED VOLTAGE TO EXCITER |
| +10VSN | CLEAN VOLTAGE TO SYNTHESIZER |
| +6V | TO LINEAR REGULATORS/LEDS |
| +5A | VOLTAGE TO ALL LINEAR CIRCUITS |
| +5VC | CLEAN TO SPECIAL LINEAR CIRCUITS |
| +3V | |
| -5V | |
| GND | ALL SIGNALS |

BOARD DESIGN NOTES:

25 ohms W=43.6mils 1/4W=621mils Layers 1-2 Spacing 8mils
 50 ohms W=16mils 1/4W=655mils Layers 1-2 Spacing 8mils
 50 ohms W=37mils Layers 1-3 Spacing=19mils 1/4W=650mils

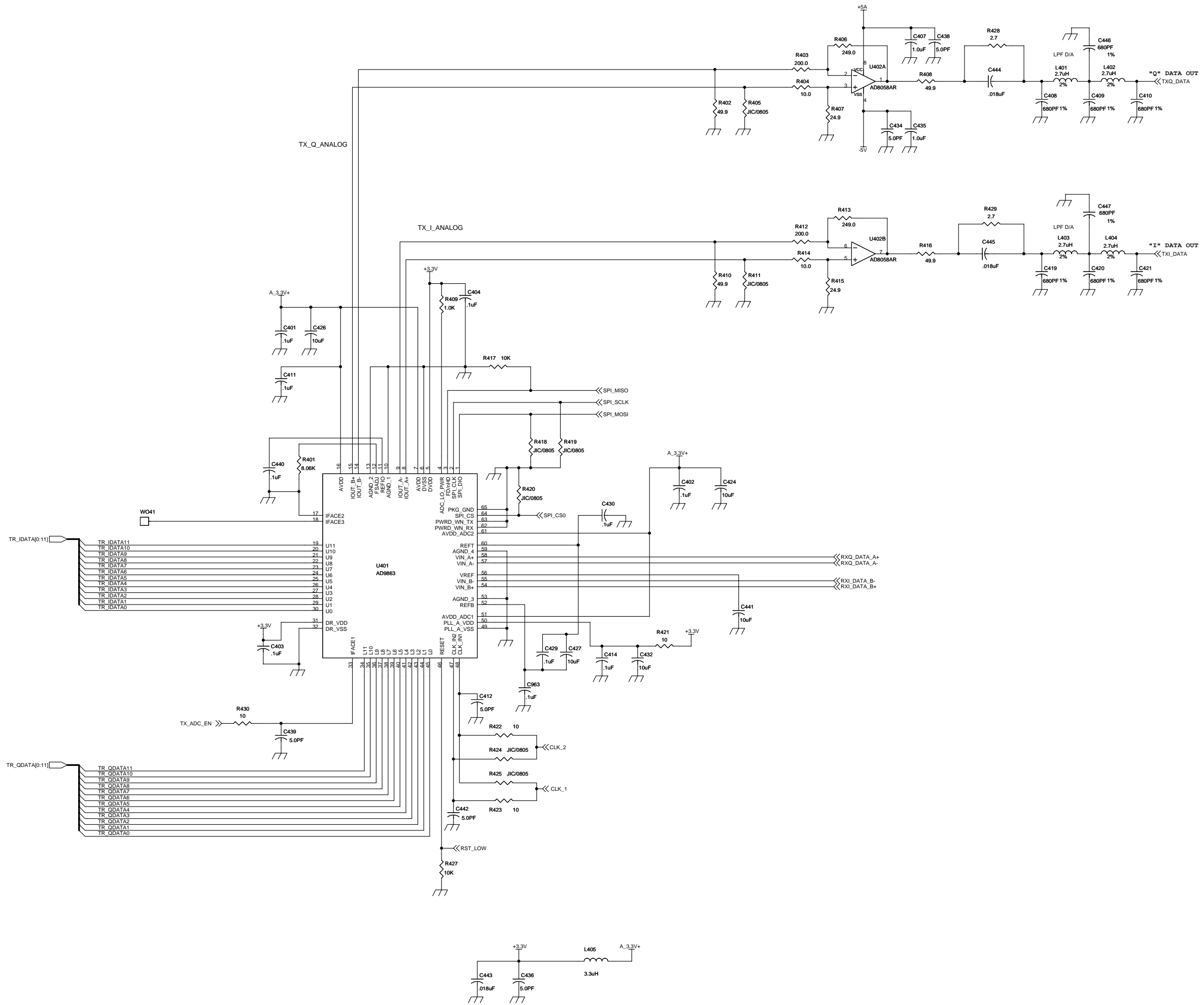
REFERENCE DESIGNATOR ASSIGNMENTS:
 VCO/SYNTHESIZER = 900s
 TRANSMITTER = 700-899s
 RECEIVER = 500-699s
 INTERFACE/PWR SUPPLIES = 0-199s
 LOGIC = 200-499s

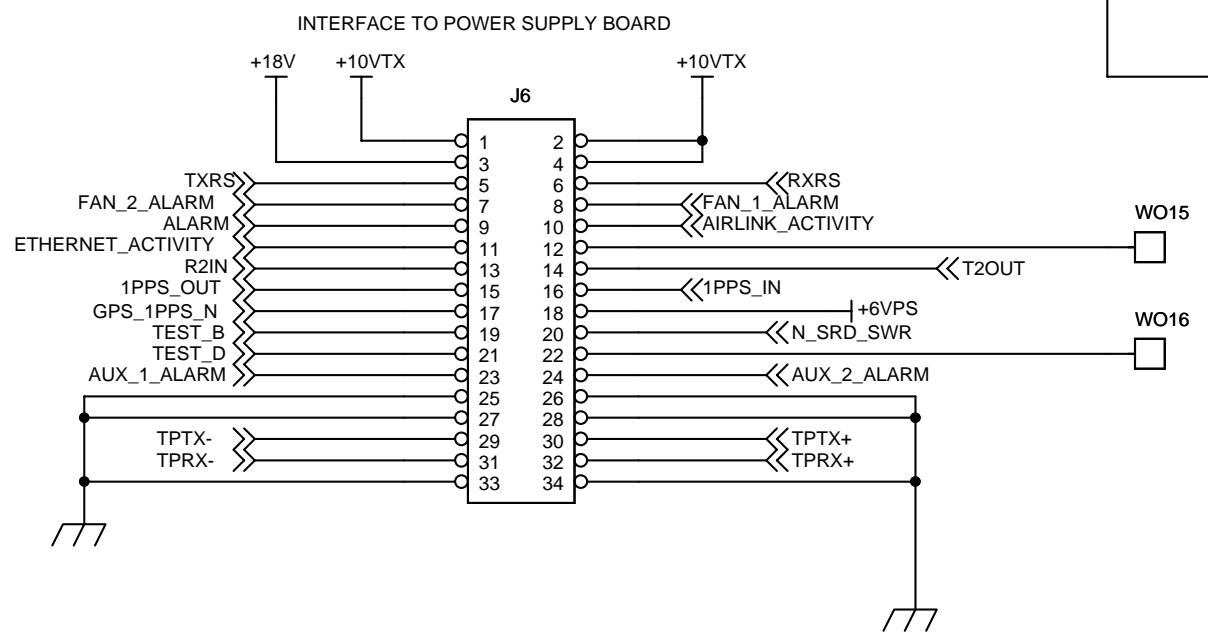
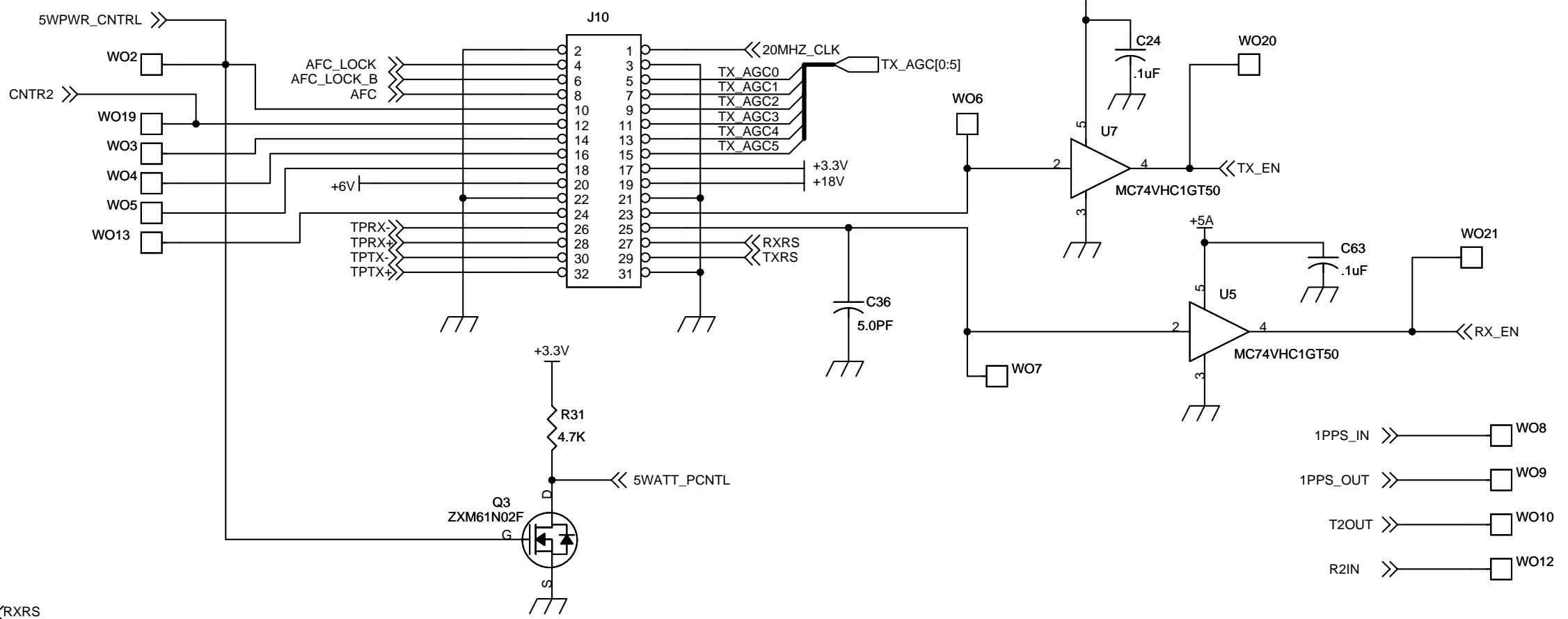
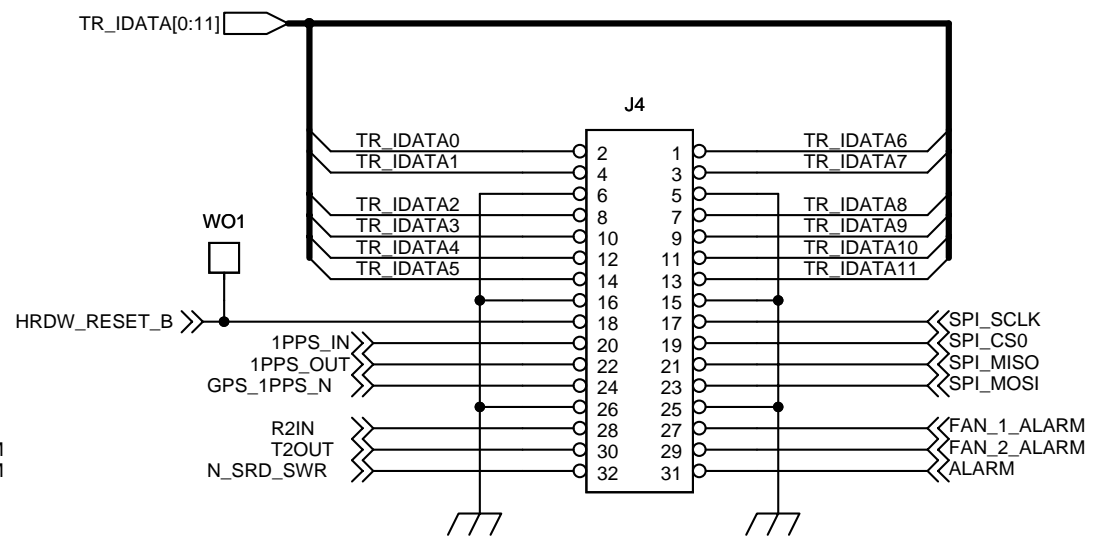
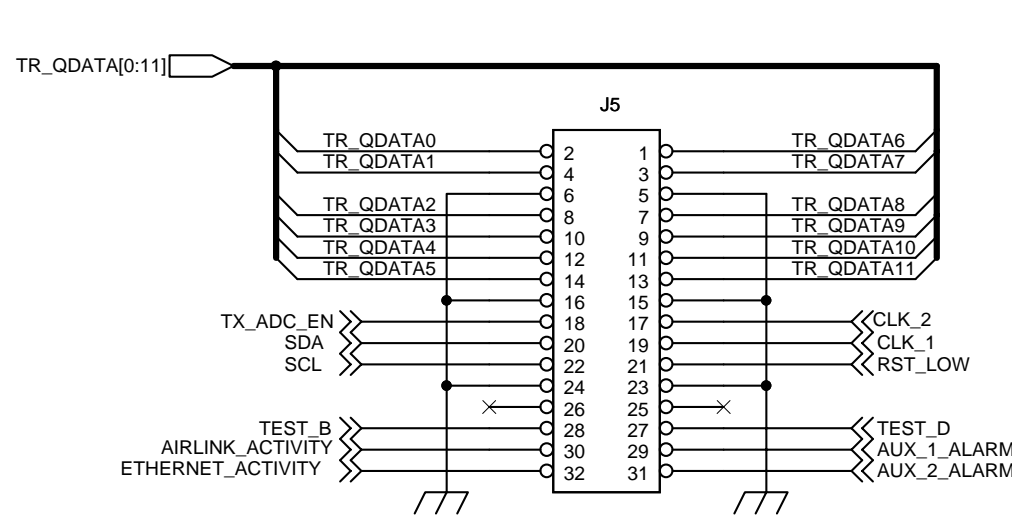
Last Revision: 4/21/05
 Variant Name = <Core Design>

Company Confidential

C:\PROJECTS\RLS\0150\135-0150-0100-04\135-0150-0100-09.DSN

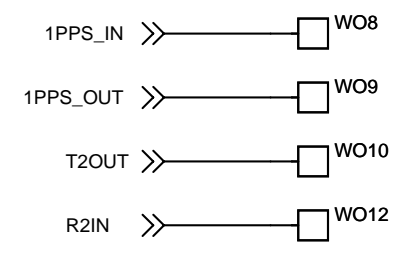
| | | |
|--------|--|------------------------|
| Title | A-MOD 2.6 GHz BASE RF - Transmitter Section | |
| Size | Document Number | Rev |
| Custom | 125-0150-0100 | NEXNET WIRELESS INC. 9 |
| Date: | Friday, April 22, 2005 | Sheet 4 of 6 |





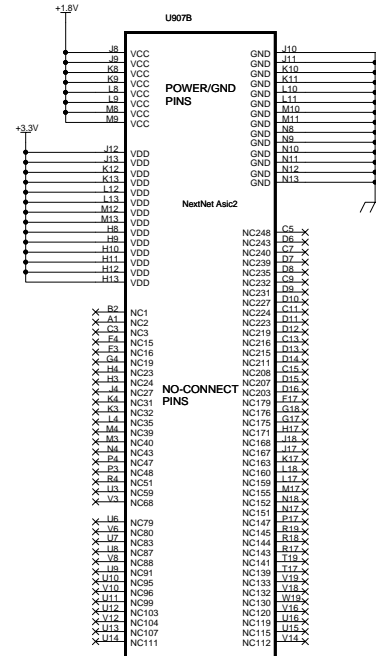
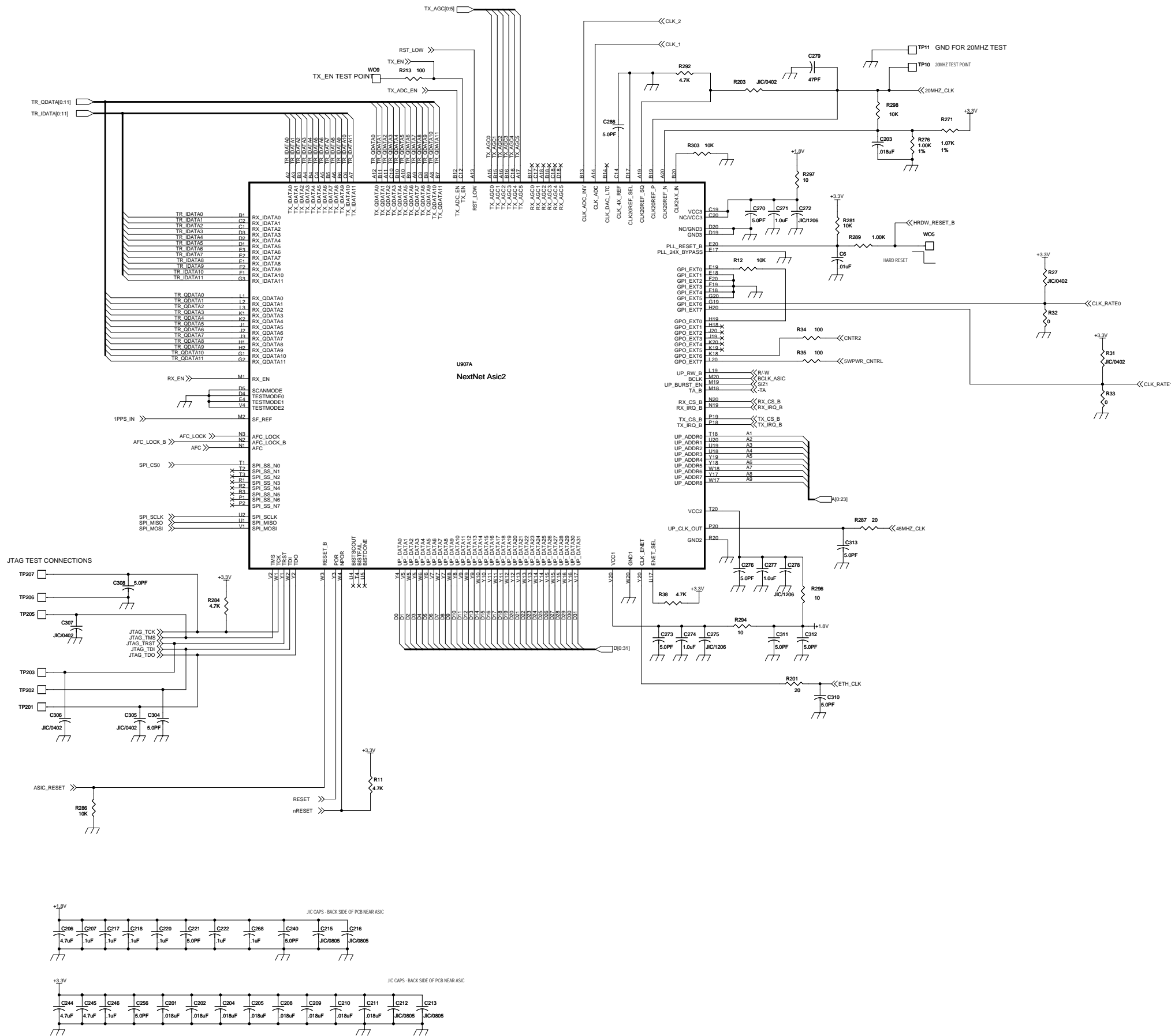
RS232 NET MAPPING NOTES:

| NET_NAME | NET_NAME |
|-------------------|------------------|
| RS232 RX2 = R2IN | RS232 RX1 = RXRS |
| RS232 TX2 = T2OUT | RS232 TX1 = TXRS |

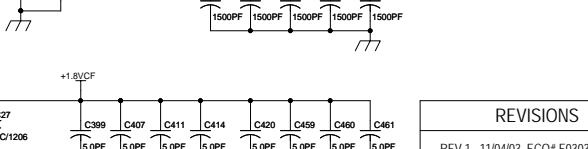
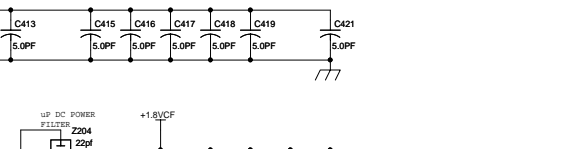
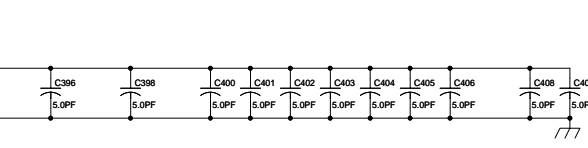
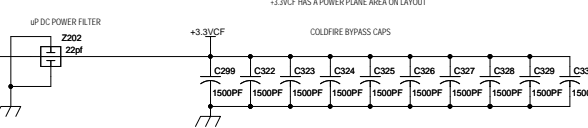
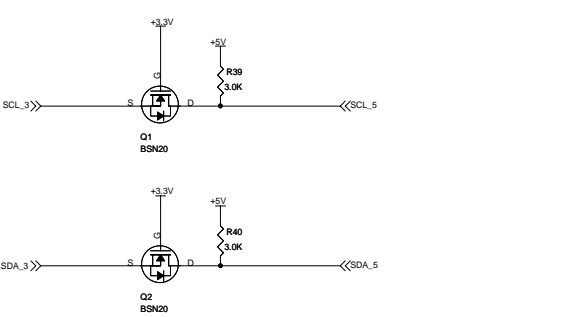
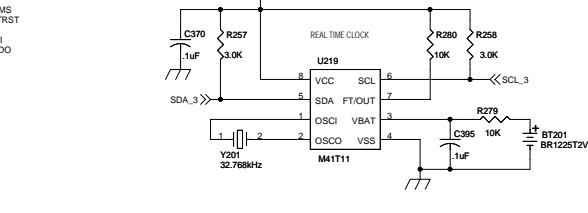
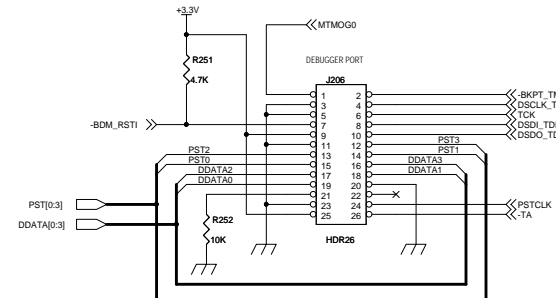
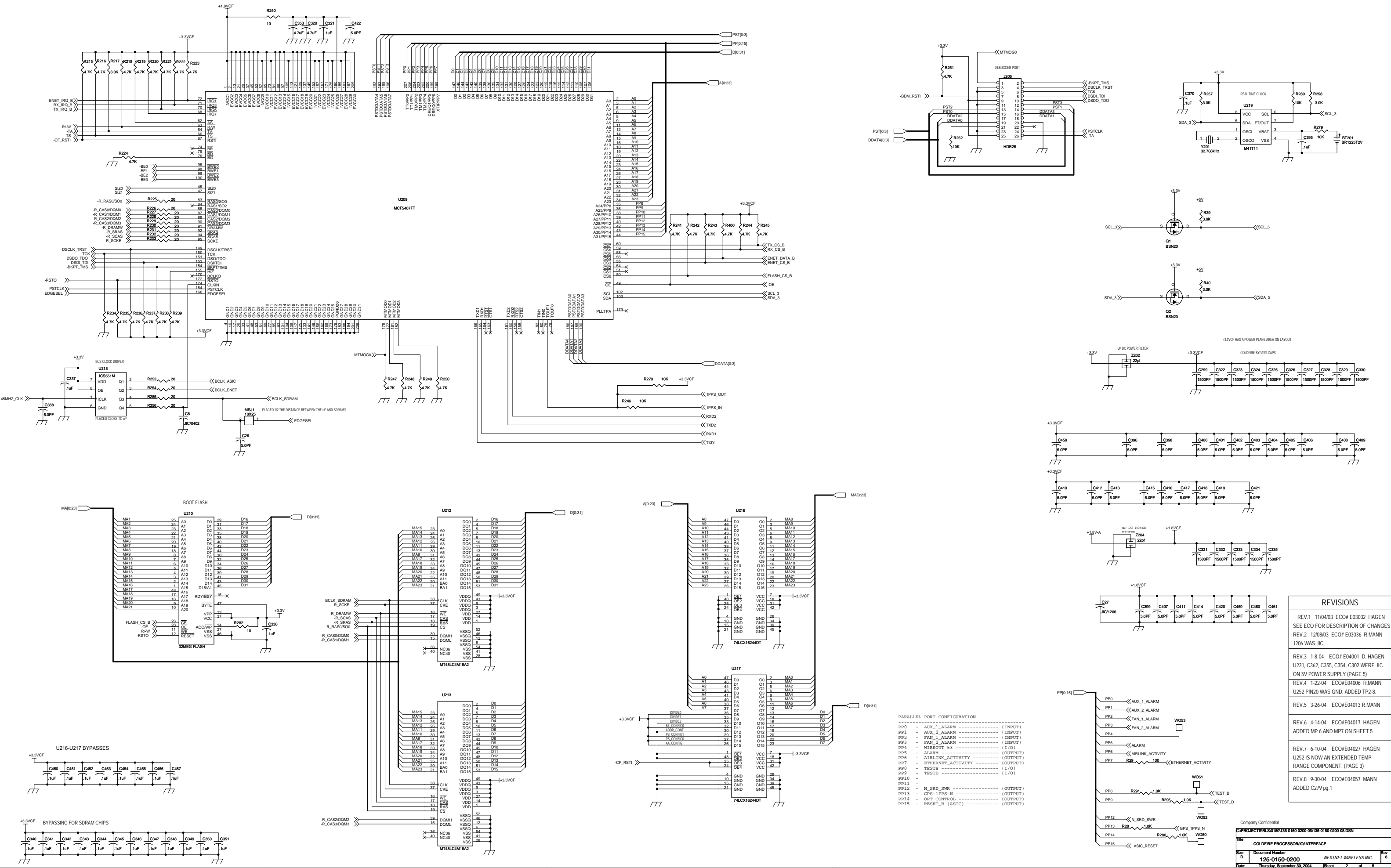


Last Revision: 4/21/05
 Variant Name = <Core Design>
 Company Confidential

| | | |
|---|---|-----------------|
| C:\PROJECTS\RLS\0150\135-0150-0100-04\135-0150-0100-09.DSN | | |
| Title A-MOD 2.6 GHz BASE RF -INTERFACE CONNECTORS | | |
| Size B | Document Number 125-0150-0100 | Rev 9 |
| Date: Friday, April 22, 2005 | Sheet 6 | of 6 |



| REVISIONS | | |
|-----------|----------|--|
| REV.1 | 11-4-03 | ECO 03032 SEE ECO FOR DESCRIPTION OF CHANGES |
| REV.2 | 12/08/03 | ECO# E03036 R.MANN |
| REV.3 | 1-8-04 | ECO# E04001 D. HAGEN U231, C362, C355, C354, C302 WERE JIC. ON 5V POWER SUPPLY (PAGE 5) |
| REV.4 | 1-22-04 | ECO# E04006 R.MANN U252 PIN20 WAS GND. ADDED TP2-8. |
| REV.5 | 3-26-04 | ECO# E04013 R.MANN ADDED C201, C202, C204, C205, C208-C213, C215, C216 - TO U907. MOVED 3.3V TRACE ON U252 E-NET PWR SECTION. |
| REV.6 | 4-14-04 | ECO# E04017 HAGEN ADDED MP 6 AND MP7 ON SHEET 5 |
| REV.7 | 6-10-04 | ECO# E04027 HAGEN U252 IS NOW AN EXTENDED TEMP RANGE COMPONENT. (PAGE 3) |
| REV.8 | 9-30-04 | ECO# E04057 MANN ADDED C279 pg.1 |

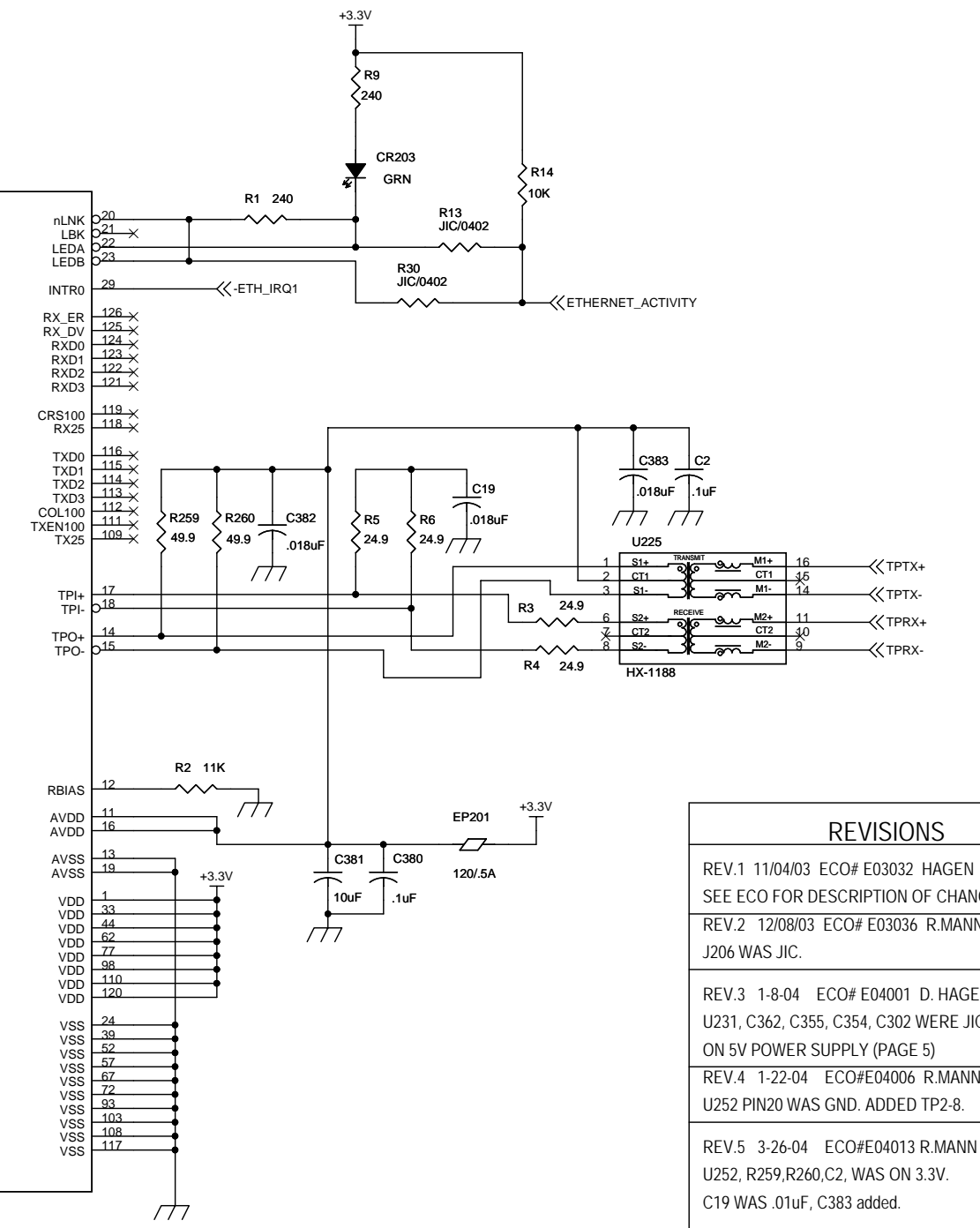
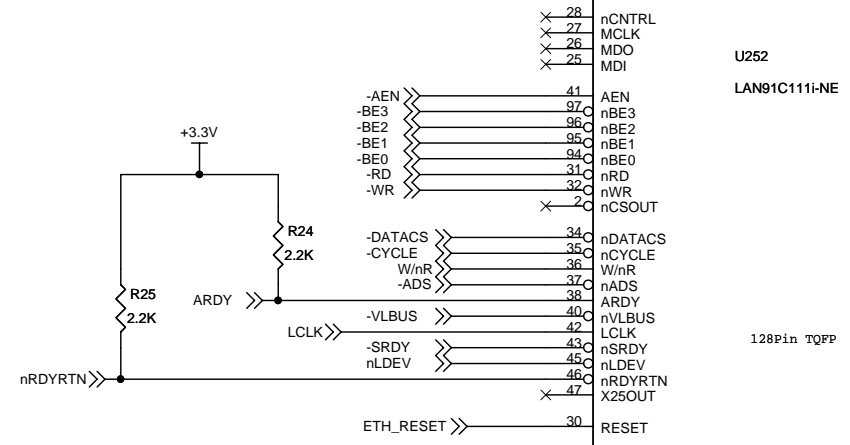
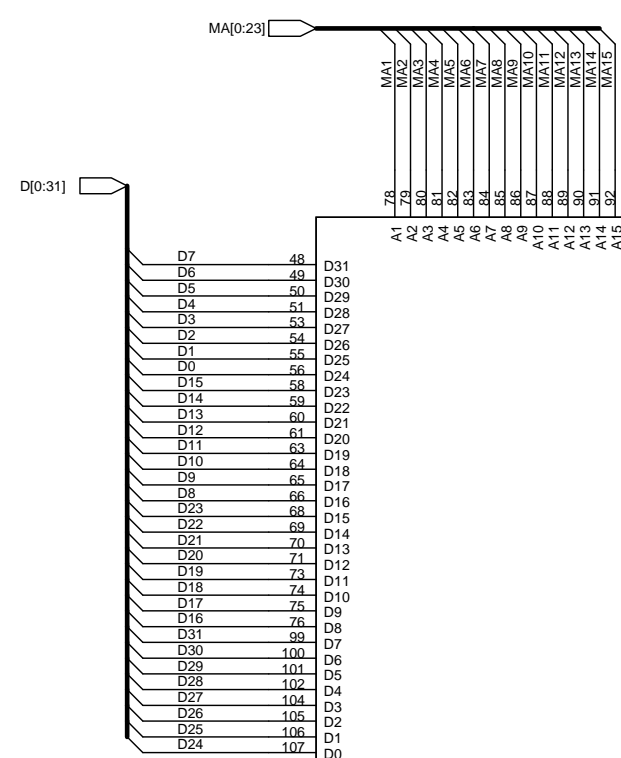
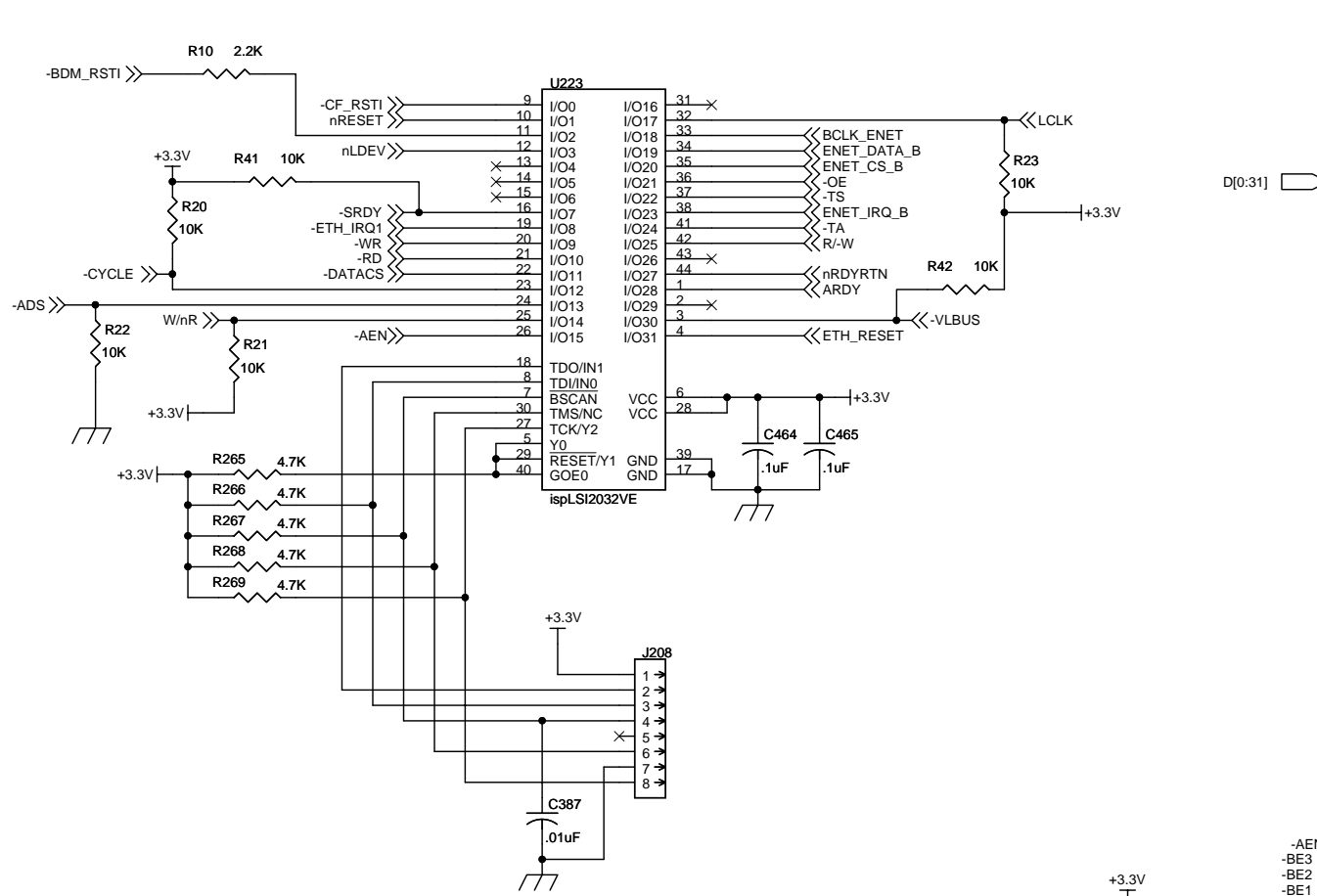


PARALLEL PORT CONFIGURATION

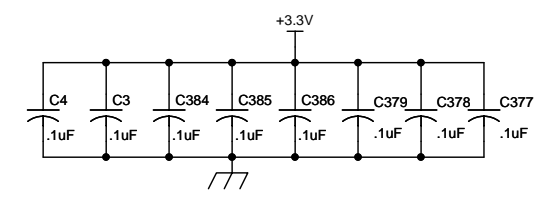
| | | |
|------|-------------------|----------|
| PP0 | AUX_1_ALARM | (INPUT) |
| PP1 | AUX_2_ALARM | (INPUT) |
| PP2 | FAN_1_ALARM | (INPUT) |
| PP3 | FAN_2_ALARM | (INPUT) |
| PP4 | WIREOUT 53 | (I/O) |
| PP5 | ALARM | (OUTPUT) |
| PP6 | AIRLINK_ACTIVITY | (OUTPUT) |
| PP7 | ETHERNET_ACTIVITY | (OUTPUT) |
| PP8 | TESTB | (I/O) |
| PP9 | TESTD | (I/O) |
| PP10 | | |
| PP11 | | |
| PP12 | N_SRD_SWR | (OUTPUT) |
| PP13 | GFS-1PPFS-N | (OUTPUT) |
| PP14 | OPT_CONTROL | (OUTPUT) |
| PP15 | RESET_B (ASIC) | (OUTPUT) |

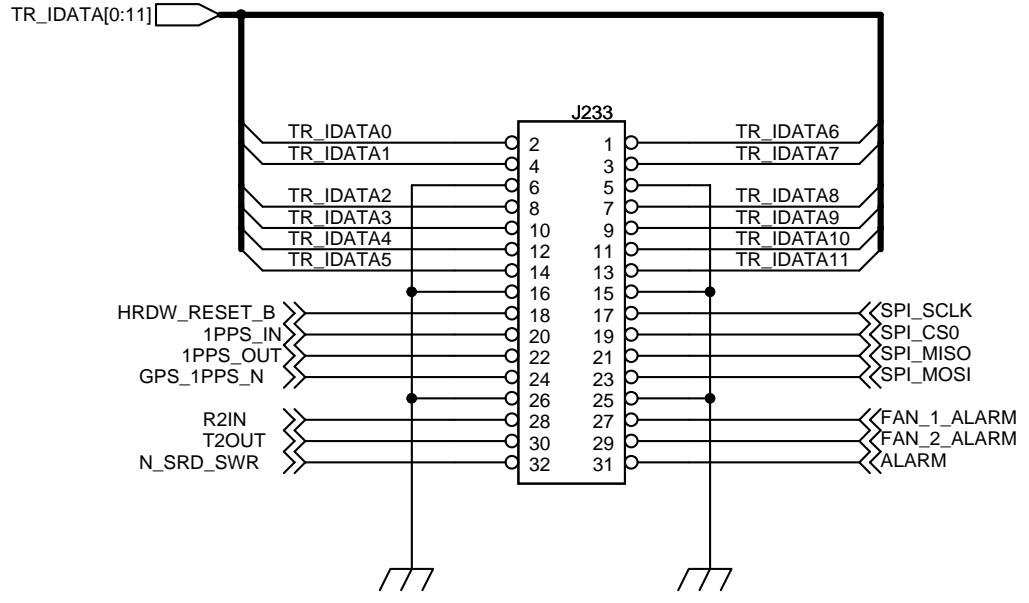
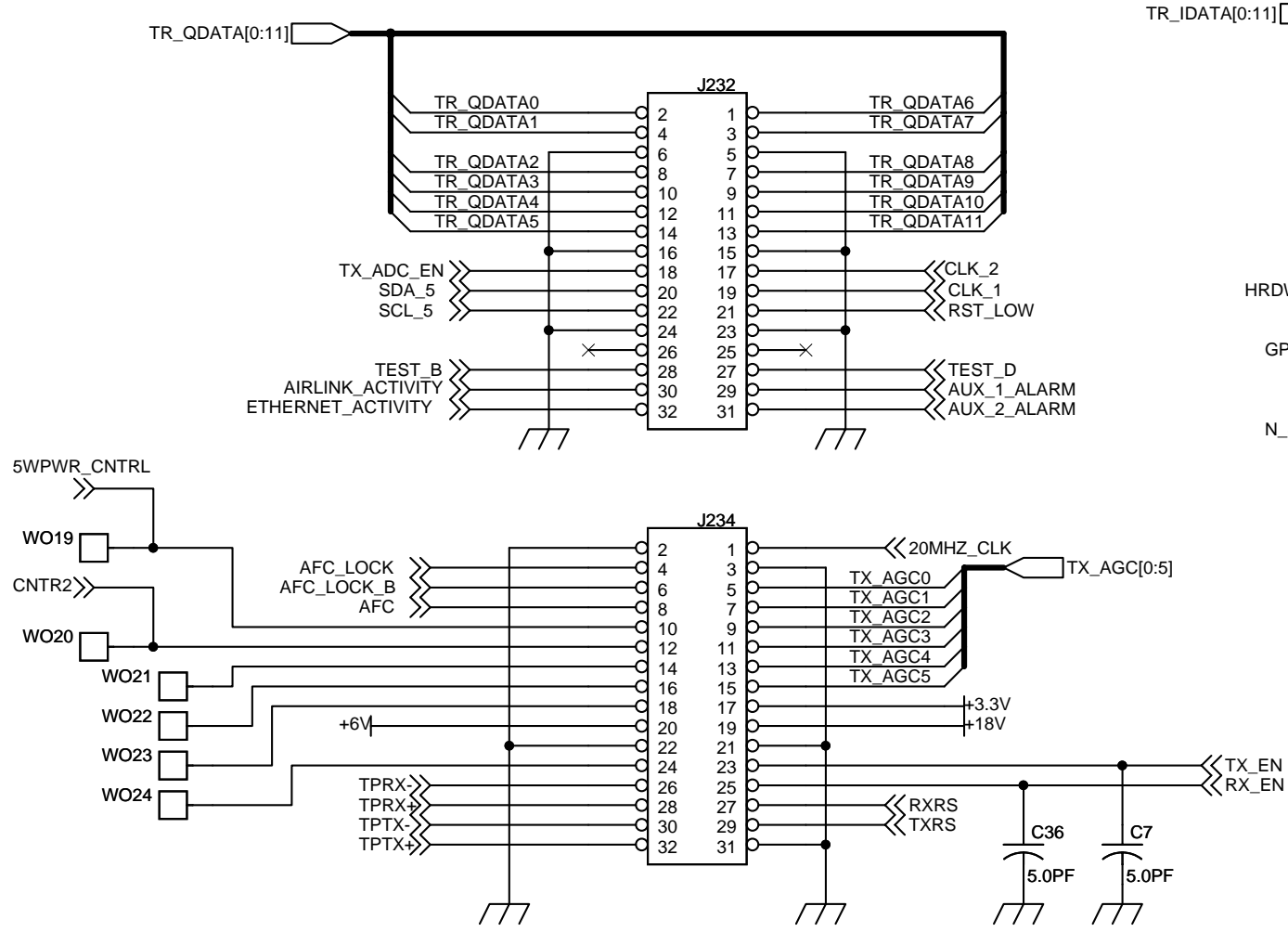
REVISIONS

| | | | |
|--|----------|-------------|----------|
| REV.1 | 11/04/03 | ECO# E03032 | HAGEN |
| SEE ECO FOR DESCRIPTION OF CHANGES | | | |
| REV.2 | 12/08/03 | ECO# E03036 | R.MANN |
| J206 WAS JIC. | | | |
| REV.3 | 1-8-04 | ECO# E04001 | D. HAGEN |
| U231, C362, C355, C354, C302 WERE JIC. ON 5V POWER SUPPLY (PAGE 5) | | | |
| REV.4 | 1-22-04 | ECO# E04006 | R.MANN |
| U252 PIN20 WAS GND. ADDED TP2-8. | | | |
| REV.5 | 3-26-04 | ECO# E04013 | R.MANN |
| REV.6 4-14-04 ECO# E04017 HAGEN ADDED MP 6 AND MP7 ON SHEET 5 | | | |
| REV.7 | 6-10-04 | ECO# E04027 | HAGEN |
| U252 IS NOW AN EXTENDED TEMP RANGE COMPONENT. (PAGE 3) | | | |
| REV.8 | 9-30-04 | ECO# E04057 | MANN |
| ADDED C279 pg.1 | | | |



| REVISIONS | |
|-----------|--|
| REV.1 | 11/04/03 ECO# E03032 HAGEN SEE ECO FOR DESCRIPTION OF CHANGES |
| REV.2 | 12/08/03 ECO# E03036 R.MANN J206 WAS JIC. |
| REV.3 | 1-8-04 ECO# E04001 D. HAGEN U231, C362, C355, C354, C302 WERE JIC. ON 5V POWER SUPPLY (PAGE 5) |
| REV.4 | 1-22-04 ECO#E04006 R.MANN U252 PIN20 WAS GND. ADDED TP2-8. |
| REV.5 | 3-26-04 ECO#E04013 R.MANN U252, R259,R260,C2, WAS ON 3.3V. C19 WAS .01uF, C383 added. |
| REV.6 | 4-14-04 ECO#E04017 HAGEN ADDED MP 6 AND MP7 ON SHEET 5 |
| REV.7 | 6-10-04 ECO#E04027 HAGEN U252 IS NOW AN EXTENDED TEMP RANGE COMPONENT. (PAGE 3) |
| REV.8 | 9-30-04 ECO#E04057 MANN ADDED C279 pg.1 |

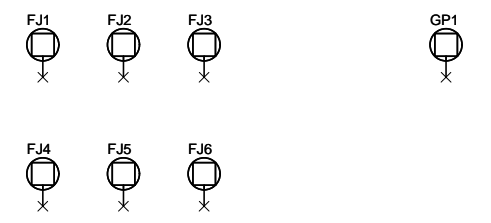
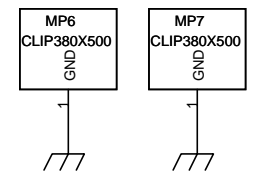
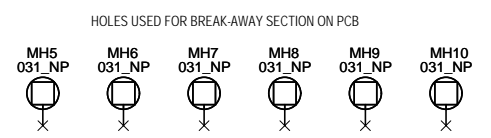
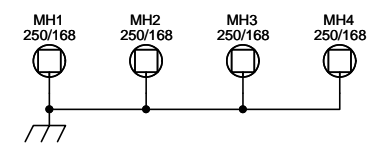
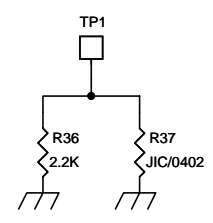
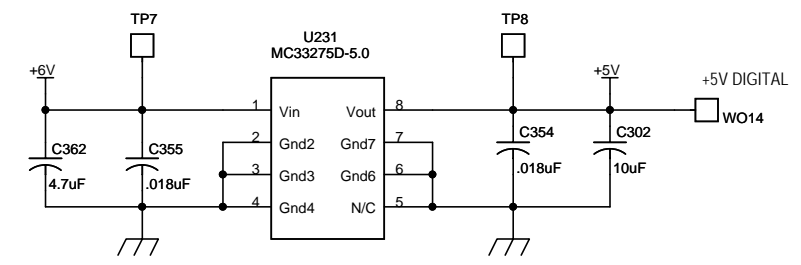
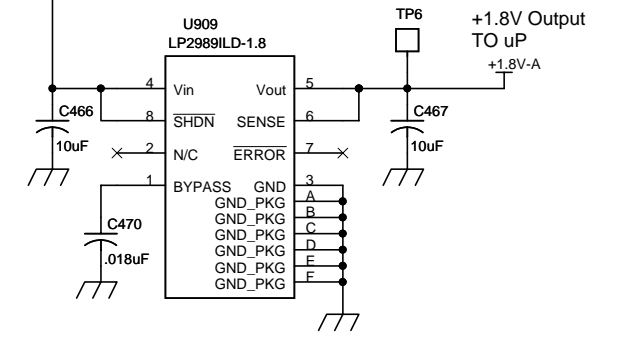
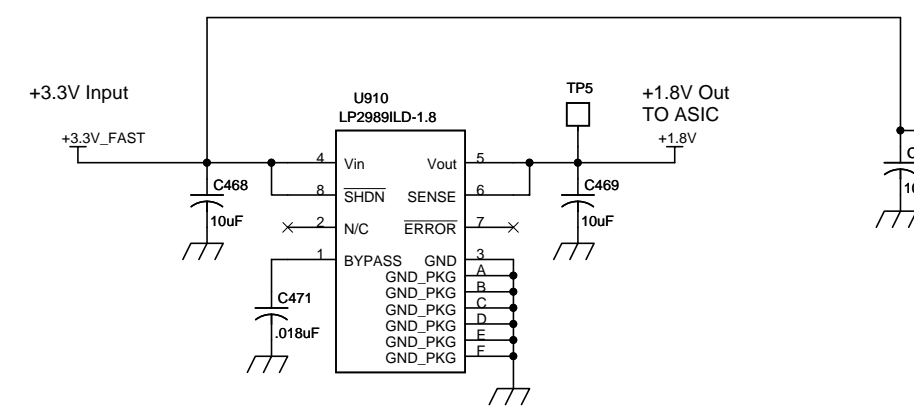
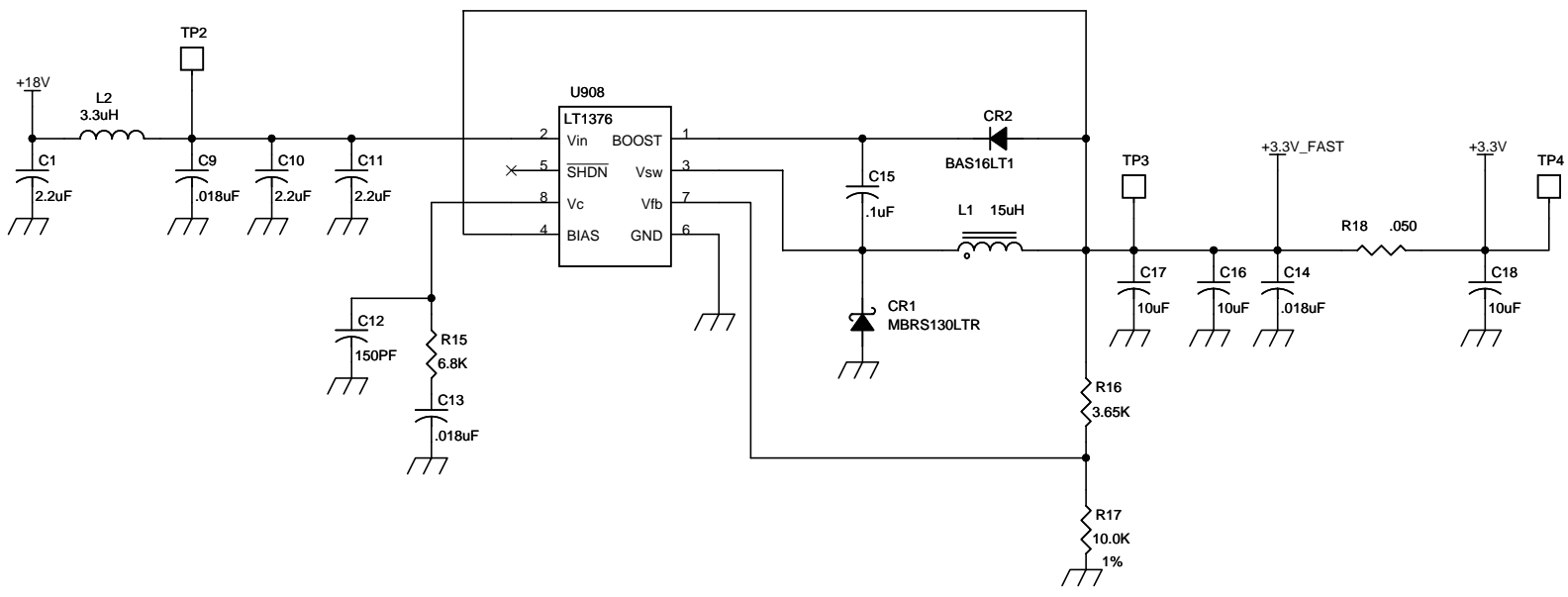




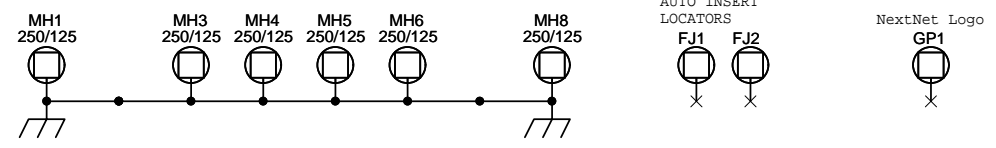
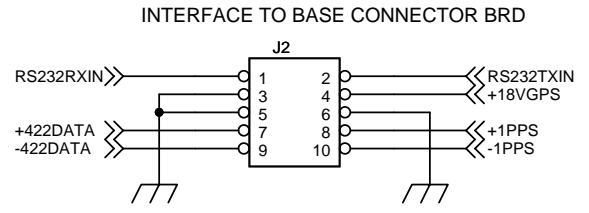
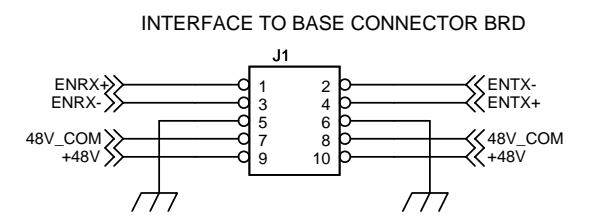
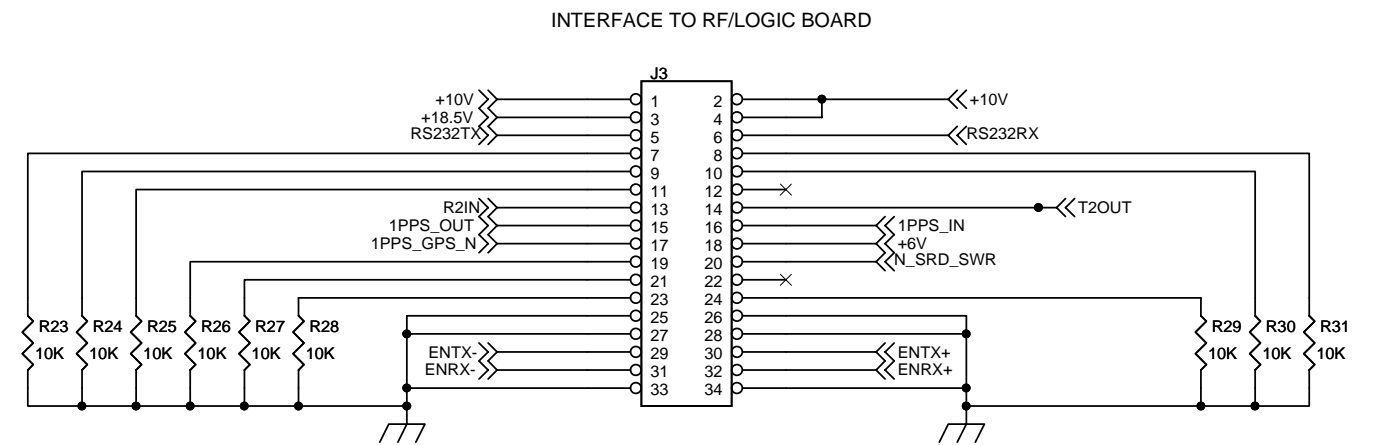
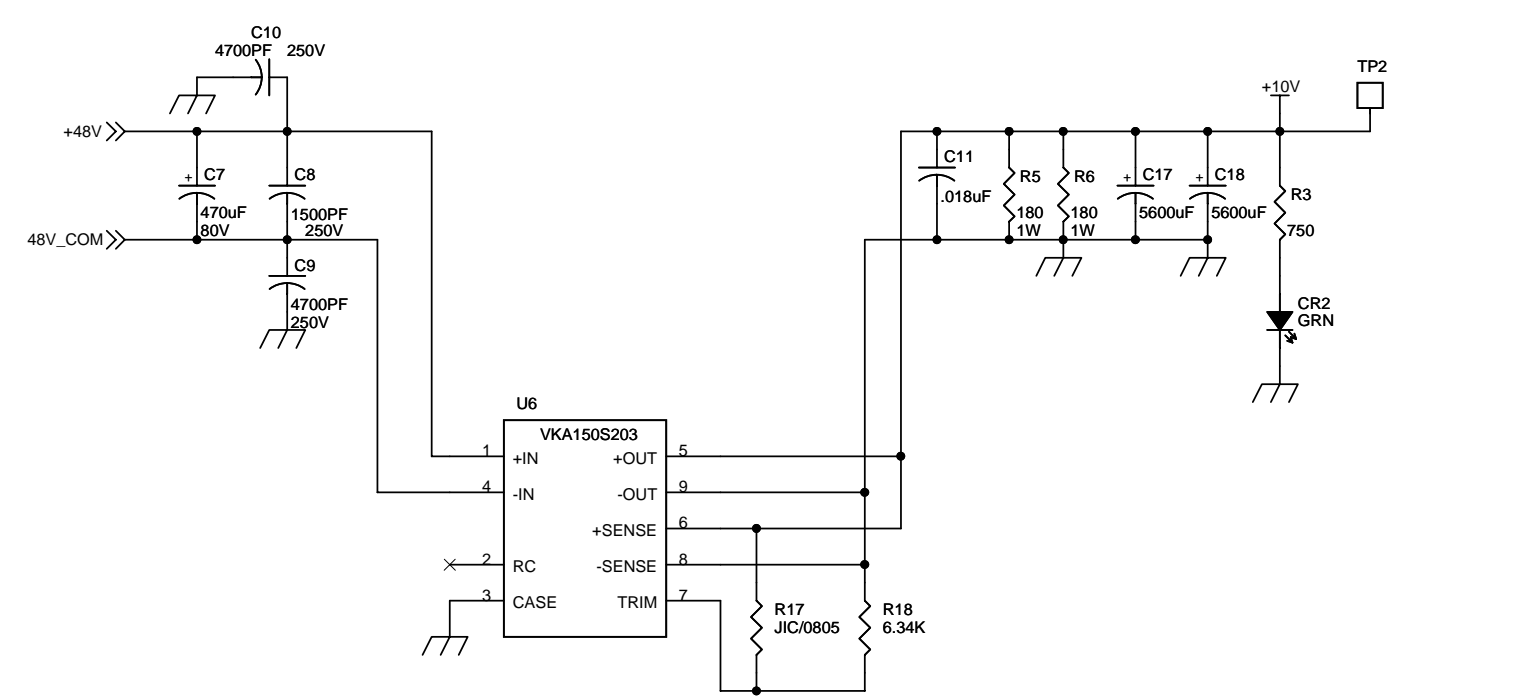
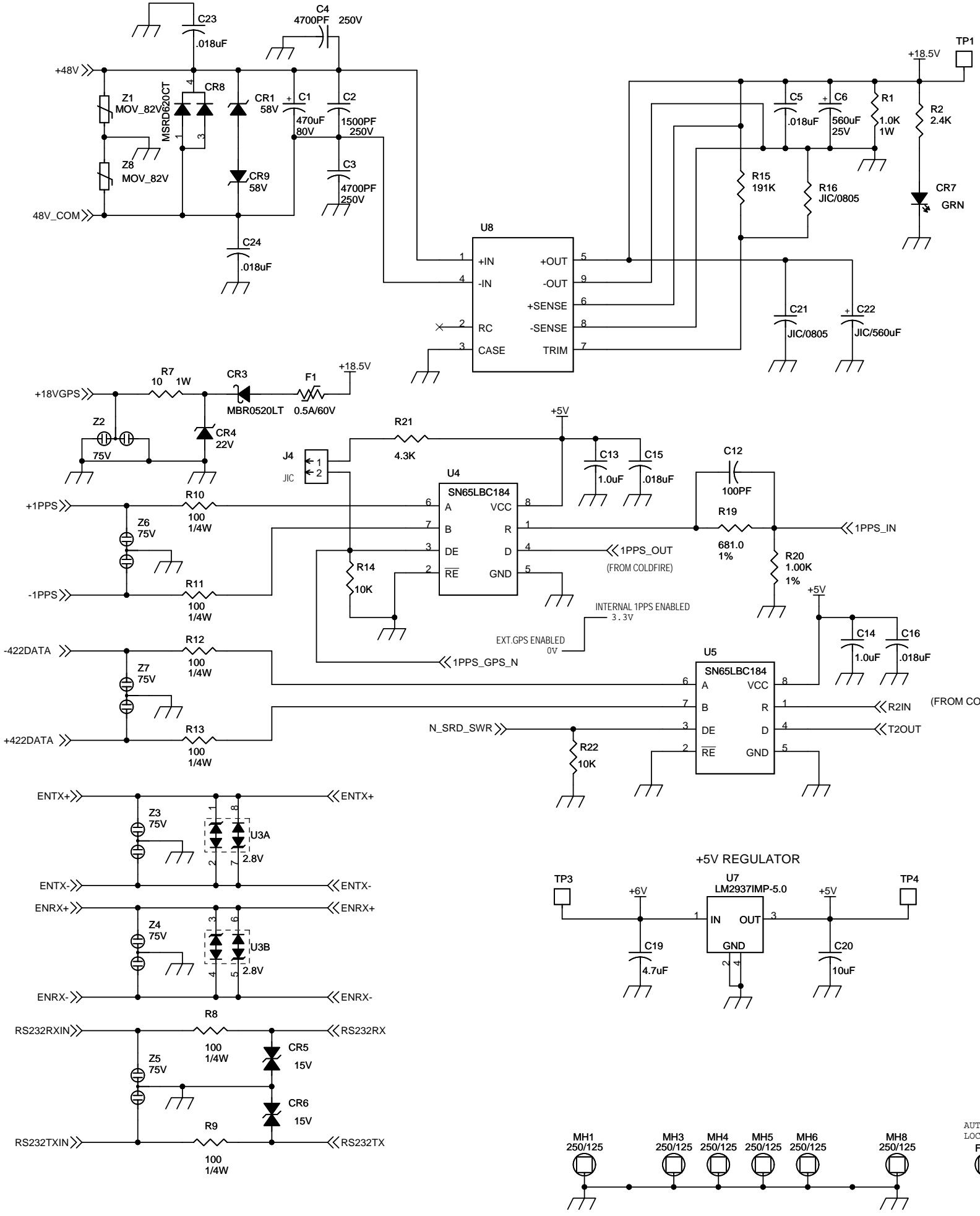
| REVISIONS | |
|-----------|--|
| REV.1 | 11/04/03 ECO# E03032 HAGEN SEE ECO FOR DESCRIPTION OF CHANGES |
| REV.2 | 12/08/03 ECO# E03036 R.MANN J206 WAS JIC. |
| REV.3 | 1-8-04 ECO# E04001 D. HAGEN U231, C362, C355, C354, C302 WERE JIC. ON 5V POWER SUPPLY (PAGE 5) |
| REV.4 | 1-22-04 ECO# E04006 R.MANN U252 PIN20 WAS GND. ADDED TP2-8. |
| REV.5 | 3-26-04 ECO#E04013 R.MANN |
| REV.6 | 4-14-04 ECO#E04017 HAGEN ADDED MP 6 AND MP7 ON SHEET 5 |
| REV.7 | 6-10-04 ECO#E04027 HAGEN U252 IS NOW AN EXTENDED TEMP RANGE COMPONENT. (PAGE 3) |
| REV.8 | 9-30-04 ECO#E04057 MANN ADDED C279 pg.1 |

Company Confidential

| | | |
|--|----------------------------------|--------------|
| C:\PROJECTS\RLS\0150\135-0150-0200-05\135-0150-0200-08.DSN | | |
| Title INTERFACE TO RF BOARD | | |
| Size B | Document Number 125-0150-0200 | Rev 8 |
| Date: | Thursday, September 30, 2004 | Sheet 4 of 5 |



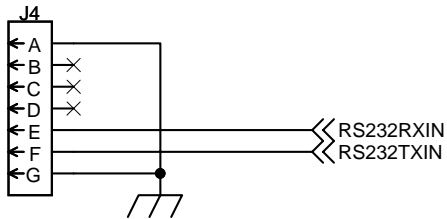
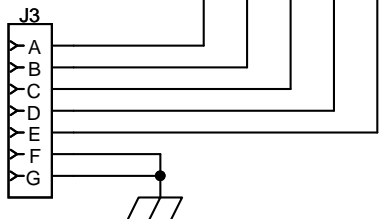
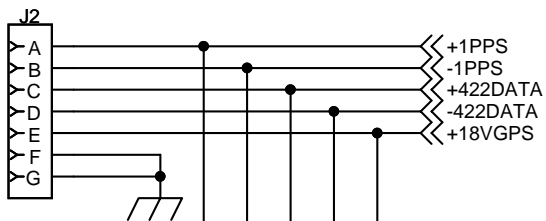
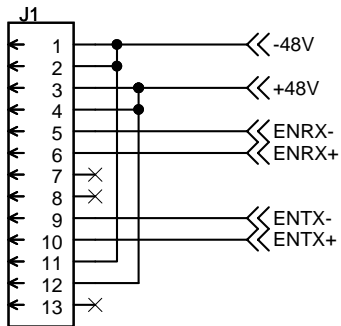
| REVISIONS | |
|-----------|--|
| REV.1 | 11/04/03 ECO# E03032 HAGEN SEE ECO FOR DESCRIPTION OF CHANGES |
| REV.2 | 12/08/03 ECO# E03036 R.MANN J206 WAS JIC. |
| REV.3 | 1-8-04 ECO# E04001 D. HAGEN U231, C362, C355, C354, C302 WERE JIC. ON 5V POWER SUPPLY (PAGE 5) |
| REV.4 | 1-23-04 ECO#E04006 R.MANN U252 PIN20 WAS GND. ADDED TP2-TP6. |
| REV.5 | 3-26-04 ECO#E04013 R.MANN |
| REV.6 | 4-14-04 ECO#E04017 HAGEN ADDED MP 6 AND MP7 ON SHEET 5 |
| REV.7 | 6-10-04 ECO#E04027 HAGEN U252 IS NOW AN EXTENDED TEMP RANGE COMPONENT. (PAGE 3) |
| REV.8 | 9-30-04 ECO#E04057 MANN ADDED C279 pg.1 |



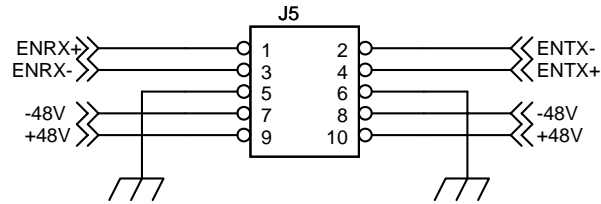
Company Confidential
NEXNET WIRELESS INC.
 RELEASED: 2/28/05

| | | |
|--|---|-----------------|
| RPM: C:\Projects\RI\0200\135-0200-0050 | | |
| Title BASE POWER SUPPLY/FILTER | | |
| Size Custom | Document Number 125-0200-0050 | Rev 0 |
| Date: Monday, February 28, 2005 | Sheet 1 | of 1 |

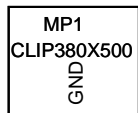
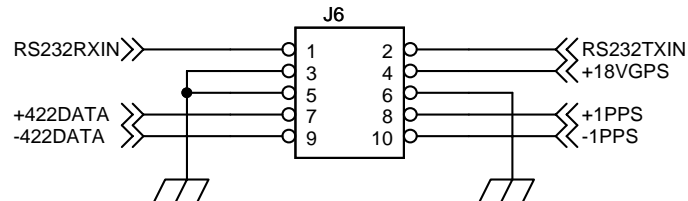
CONNECTORS TO OUTSIDE CHASSIS



INTERFACE TO SUPPLY/FILTER BOARD



INTERFACE TO SUPPLY/FILTER BOARD



TOOLING HOLES



REVISIONS

REV.1 ECO#E05046 5-18-05
ADDED MP1&2.

Released: 2/28/05

Company Confidential

C:\PROJECTS\RLS\0200\135-0200-0060-01\135-0200-0060-01.DSN

| | | |
|--|-----------------|--------------|
| Title | | |
| A-Mod New Base Station Interface Board | | |
| Size A | Document Number | Rev |
| | 125-0200-0060 | 1 |
| Date: Wednesday, May 18, 2005 | | Sheet 1 of 1 |