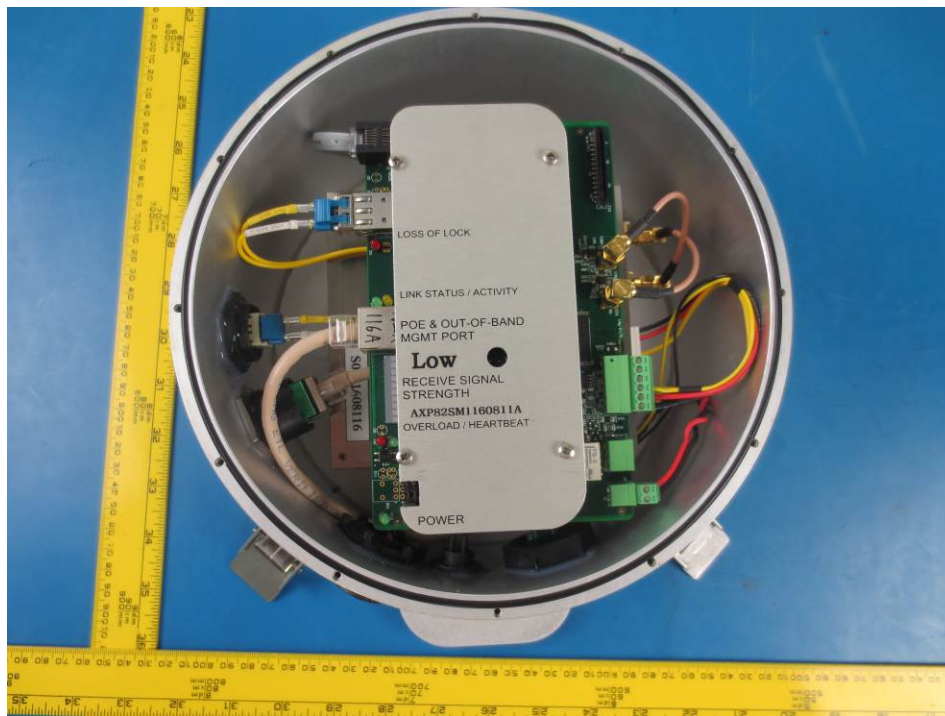
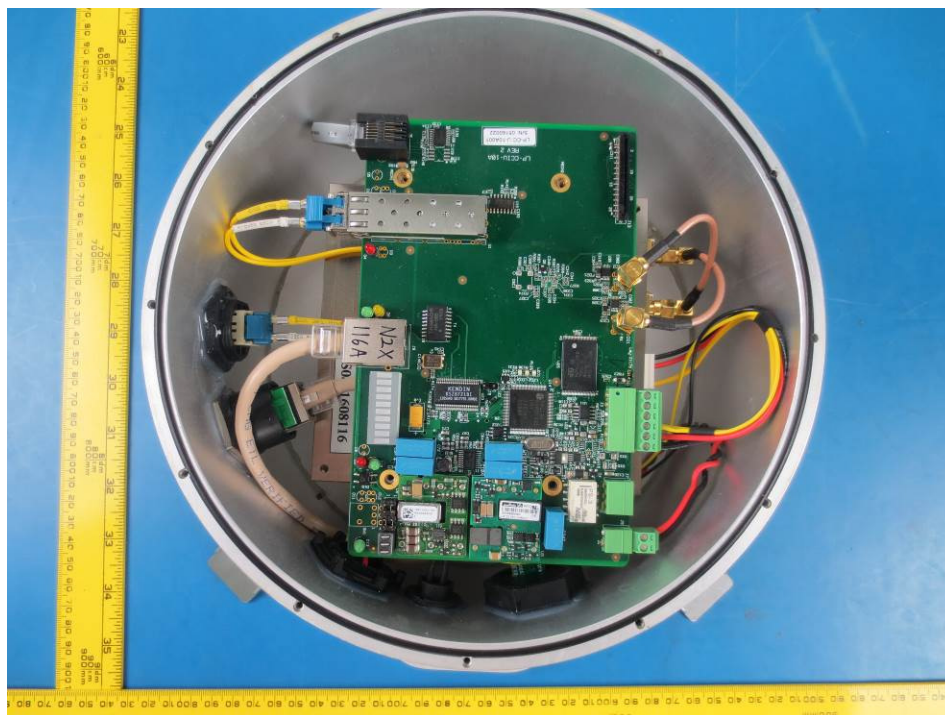


10 Exhibit D – EUT Internal Photographs

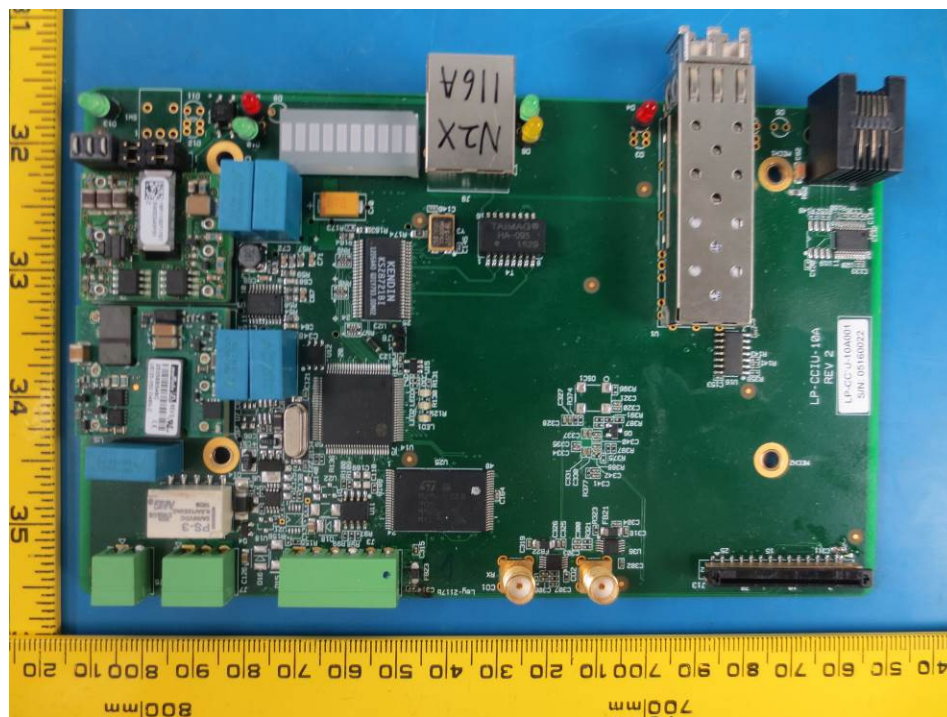
10.1 (72 GHz band LAX1-1250-91E-S3S) EUT – Open-case View



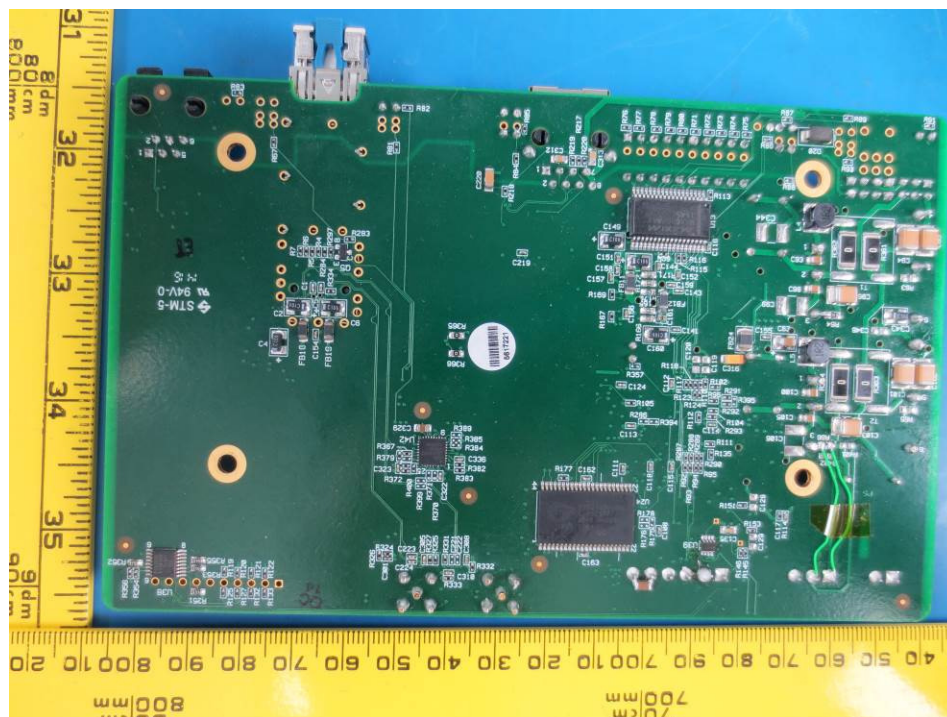
10.2 (72 GHz band LAX1-1250-91E-S3S) EUT – Open-case without Top Panel View



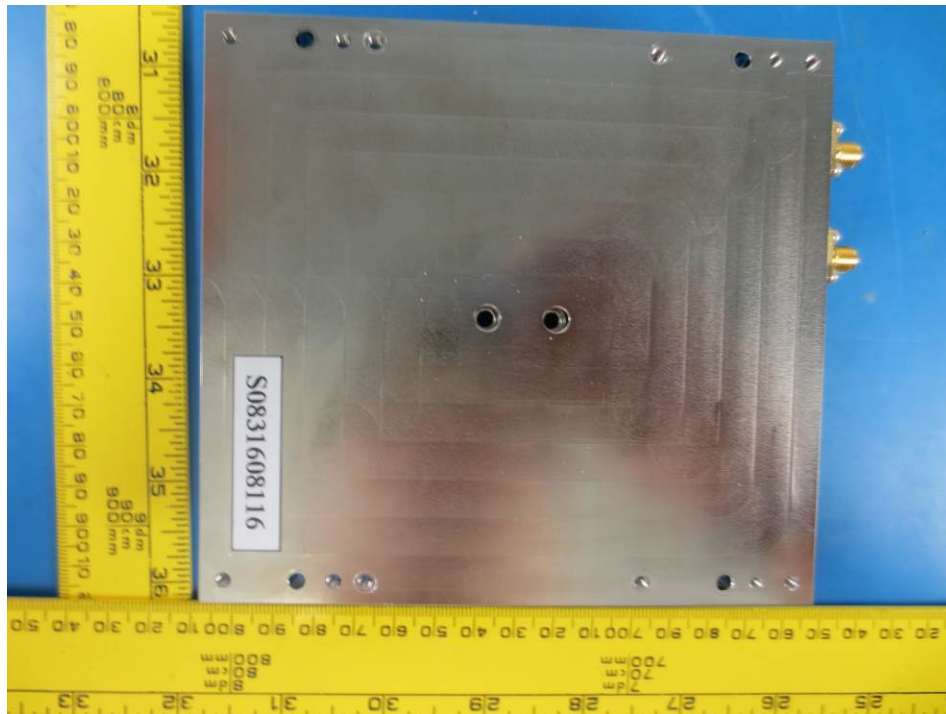
10.3 (72 GHz band LAX1-1250-91E-S3S) EUT – Main PCB Components View



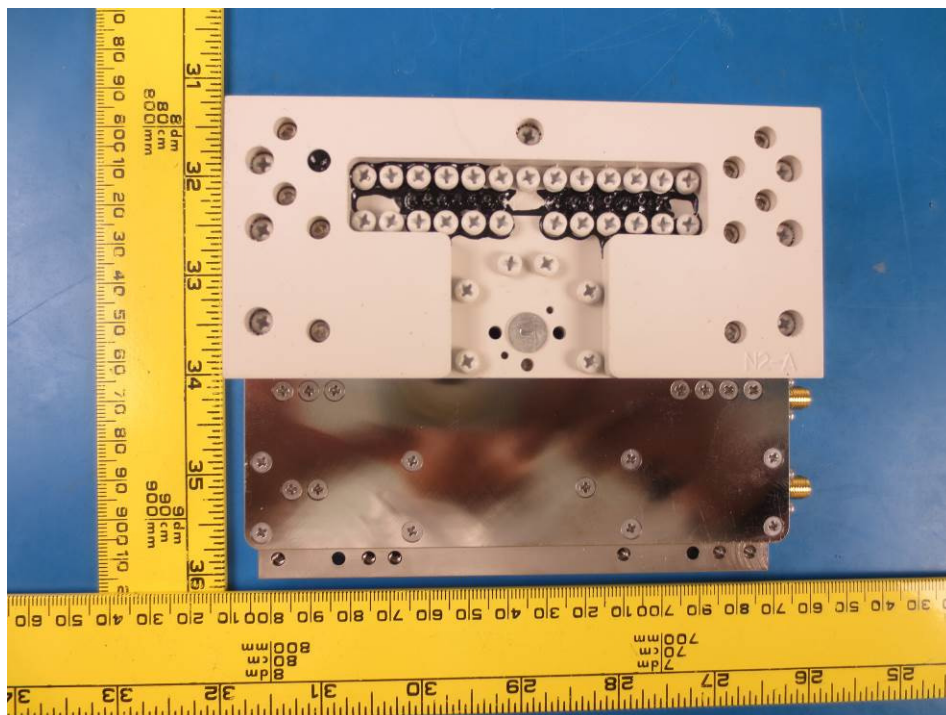
10.4 (72 GHz band LAX1-1250-91E-S3S) EUT – Main PCB Bottom View



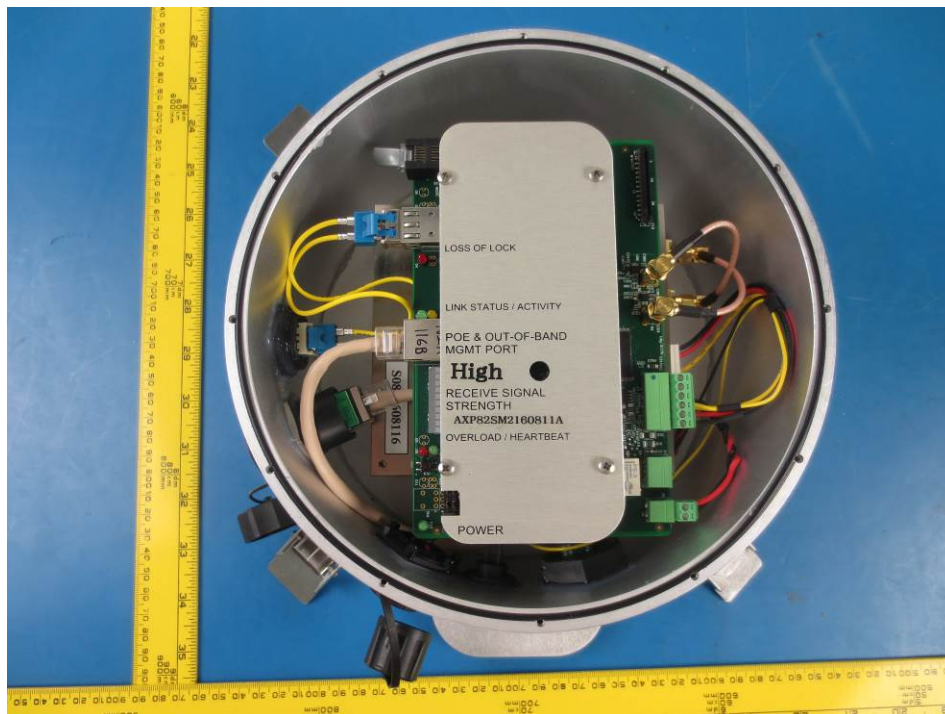
10.5 (72 GHz band LAX1-1250-91E-S3S) EUT RF Module – Top View



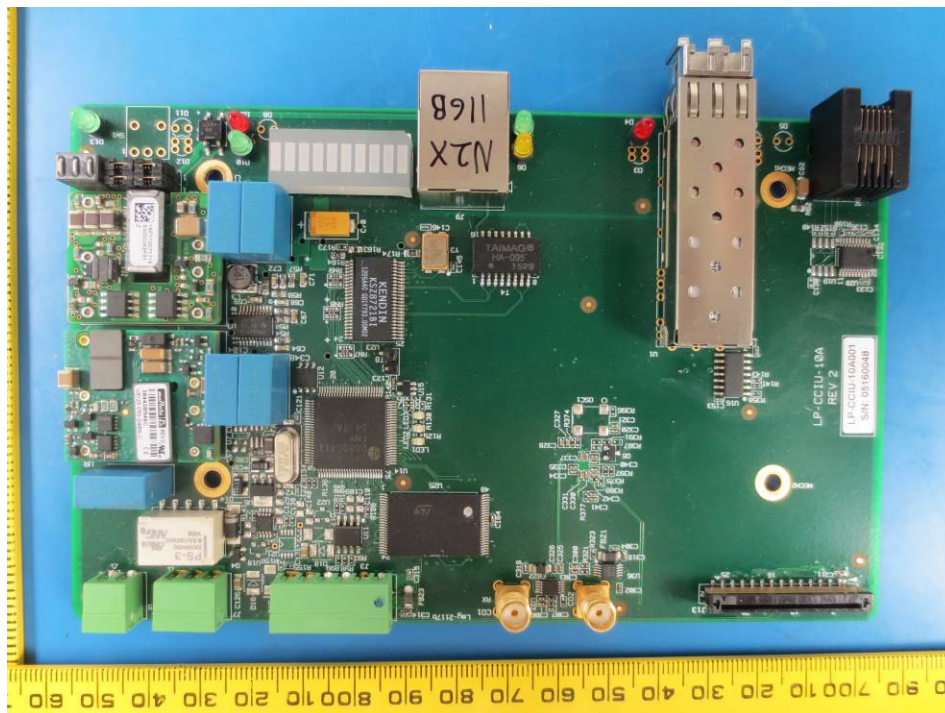
10.6 (72 GHz band LAX1-1250-91E-S3S) EUT RF Module – Bottom View



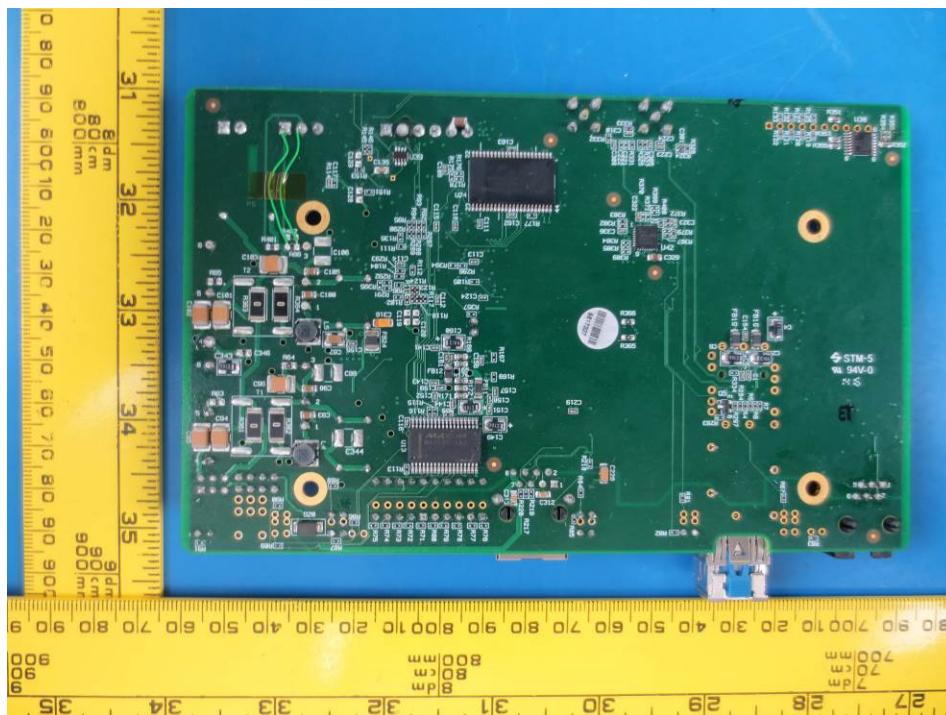
10.7 (82 GHz band LAX1-1250-92E-S3S) EUT – Open-case View



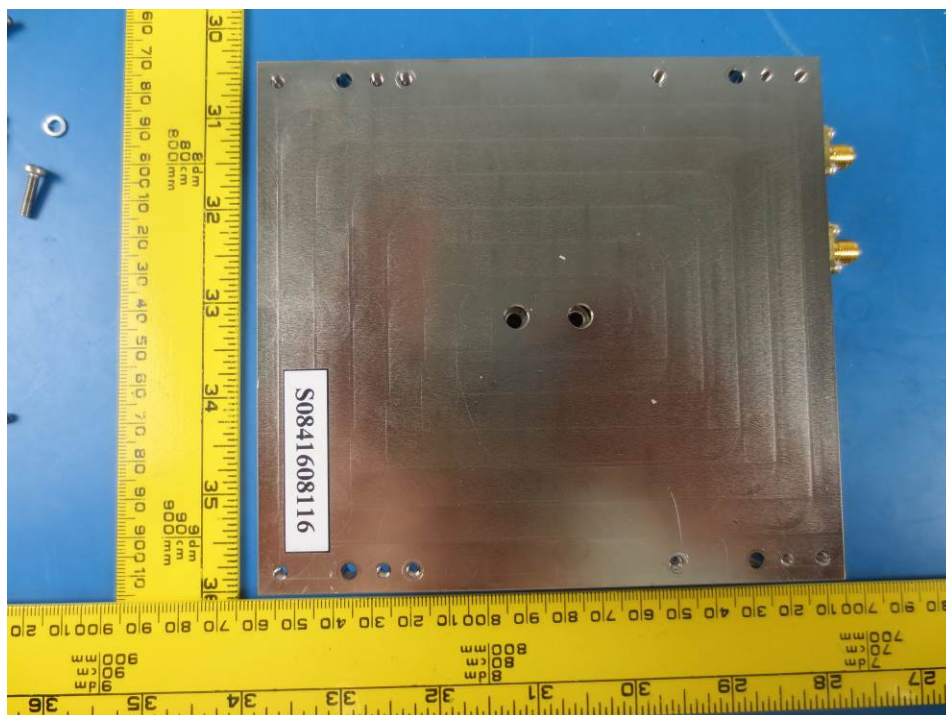
10.8 (82 GHz band LAX1-1250-92E-S3S) EUT – Main PCB Components View



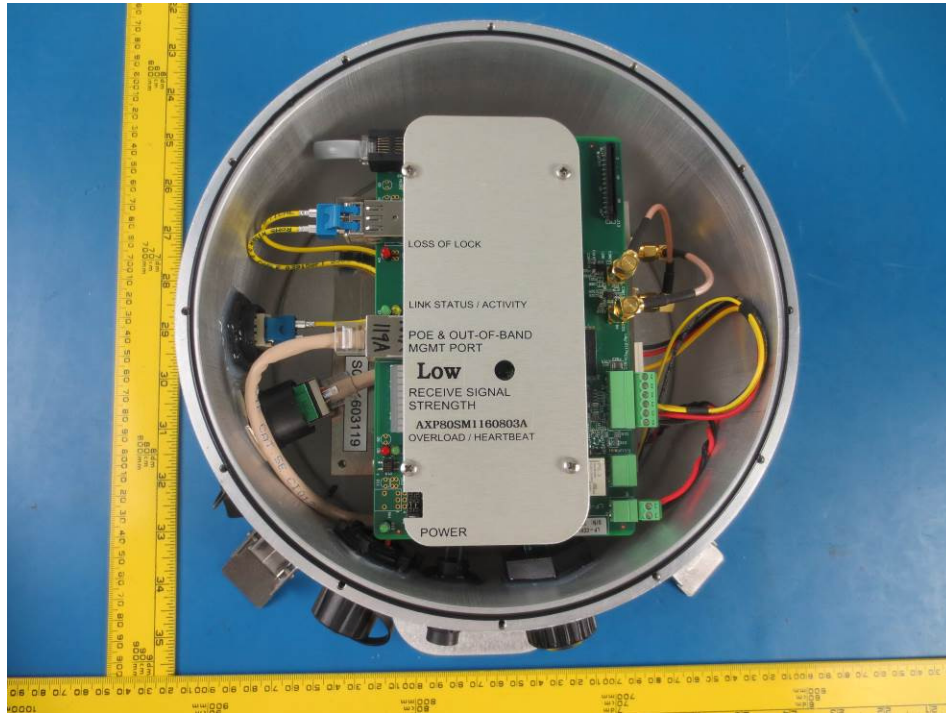
10.9 (82 GHz band LAX1-1250-92E-S3S) EUT – Main PCB Bottom View



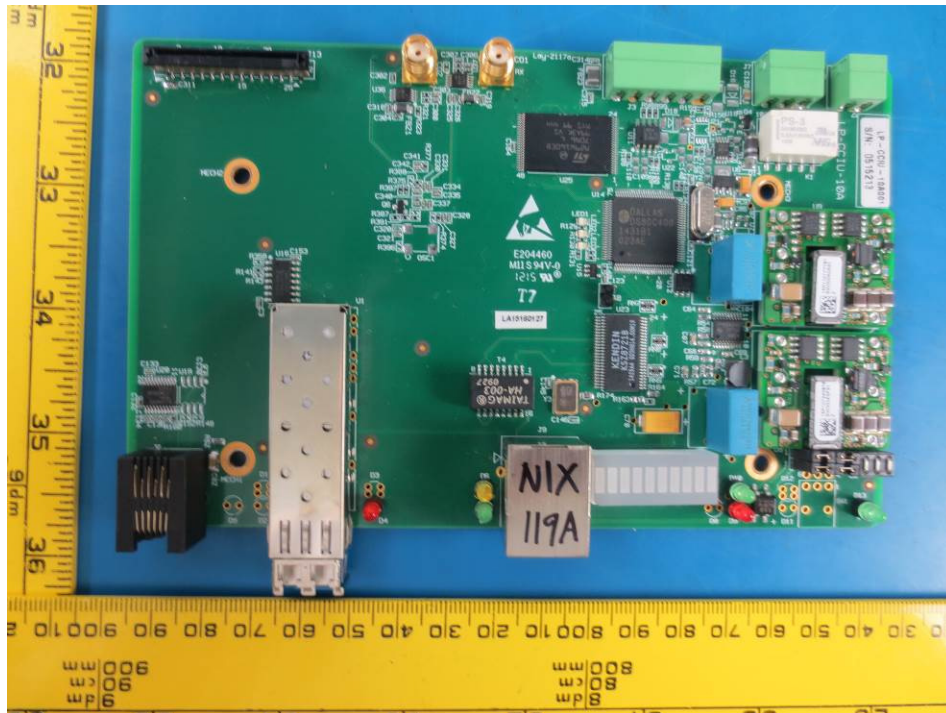
10.10 (82 GHz band LAX1-1250-92E-S3S) EUT RF Module – Top View



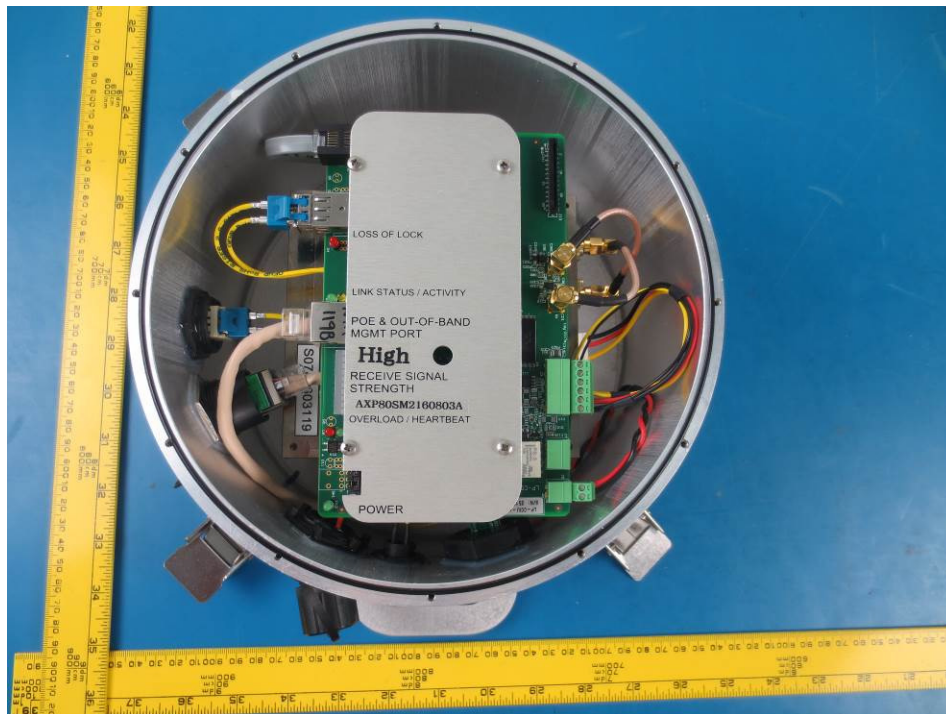
10.11 (74 GHz band LAX1-1250-91X-S3S) EUT – Open-case View



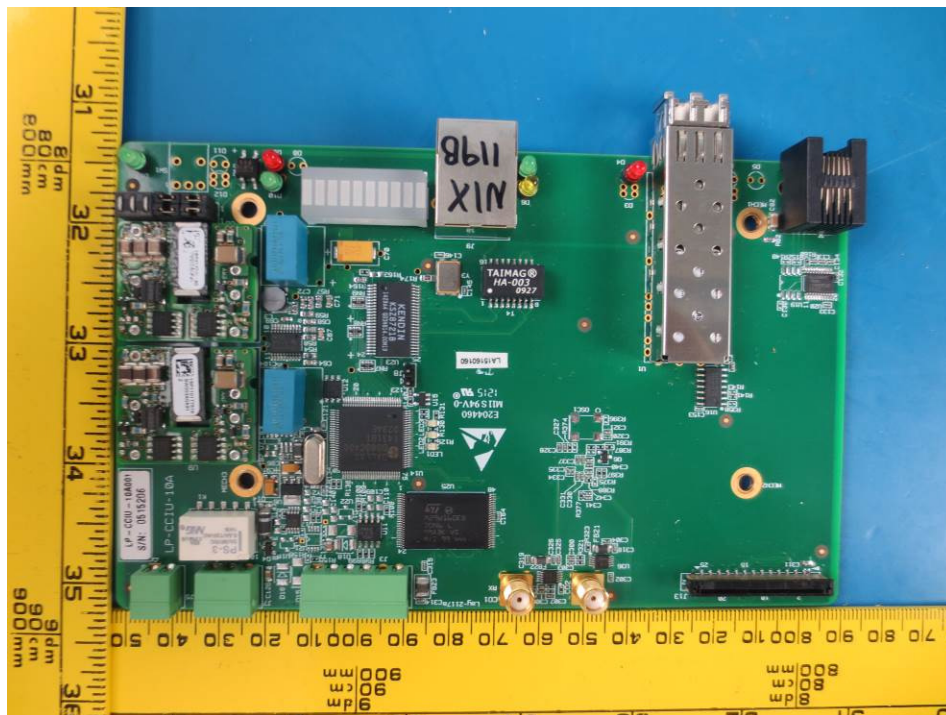
10.12 (74 GHz band LAX1-1250-91X-S3S) EUT – Main PCB Components View



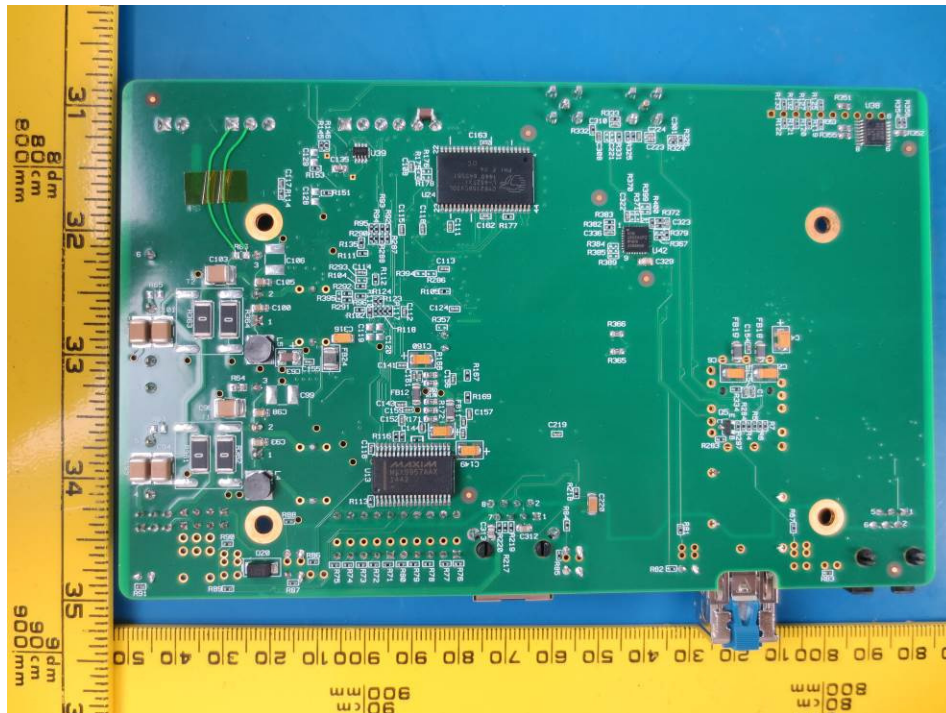
10.15 (84 GHz band LAX1-1250-92X-S3S) EUT – Open-case View



10.16 (84 GHz band LAX1-1250-92X-S3S) EUT – Main PCB Components View



10.17 (84 GHz band LAX1-1250-92X-S3S) EUT – Main PCB Bottom View



10.18 (84 GHz band LAX1-1250-92X-S3S) EUT RF Module – Top View

