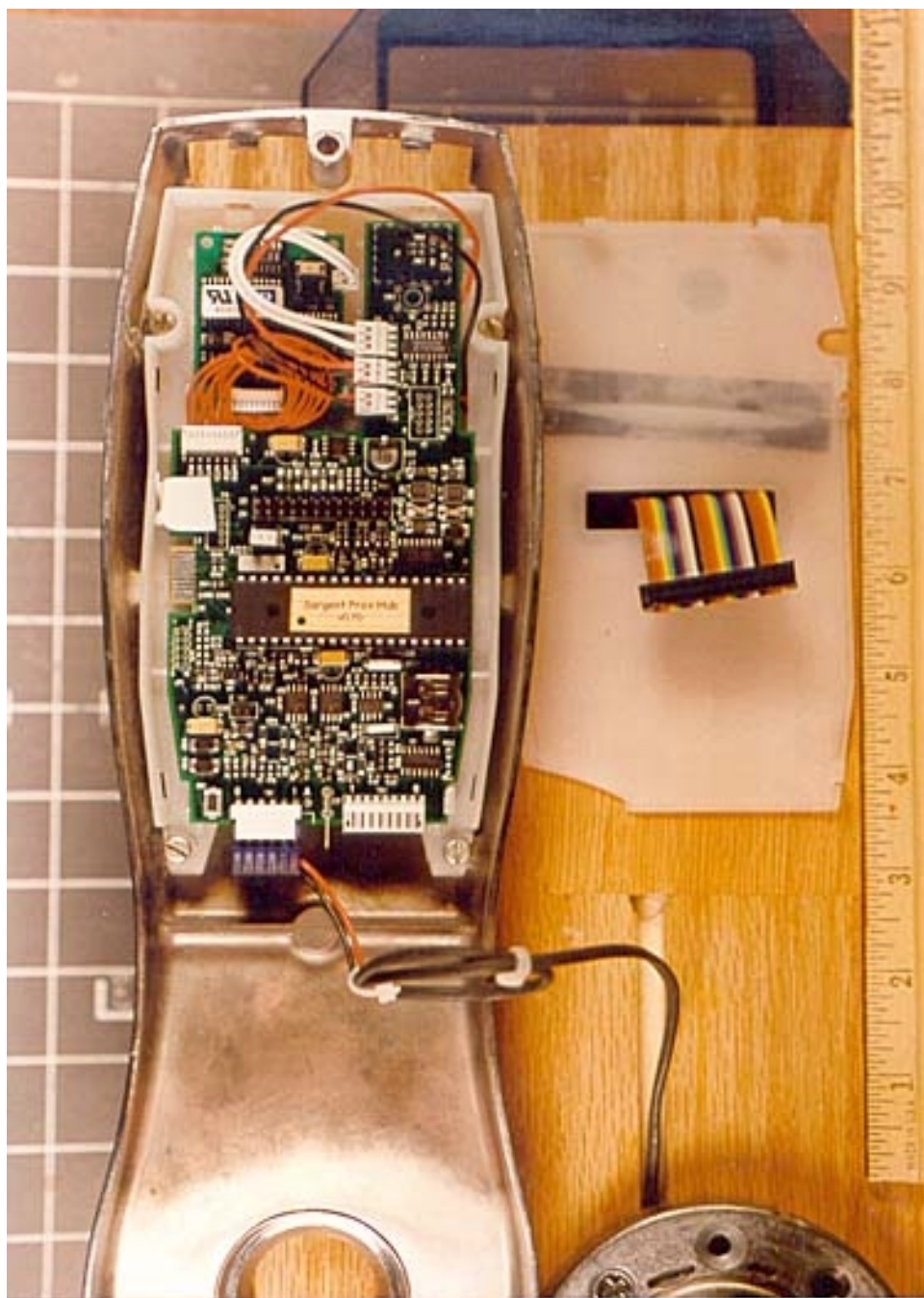


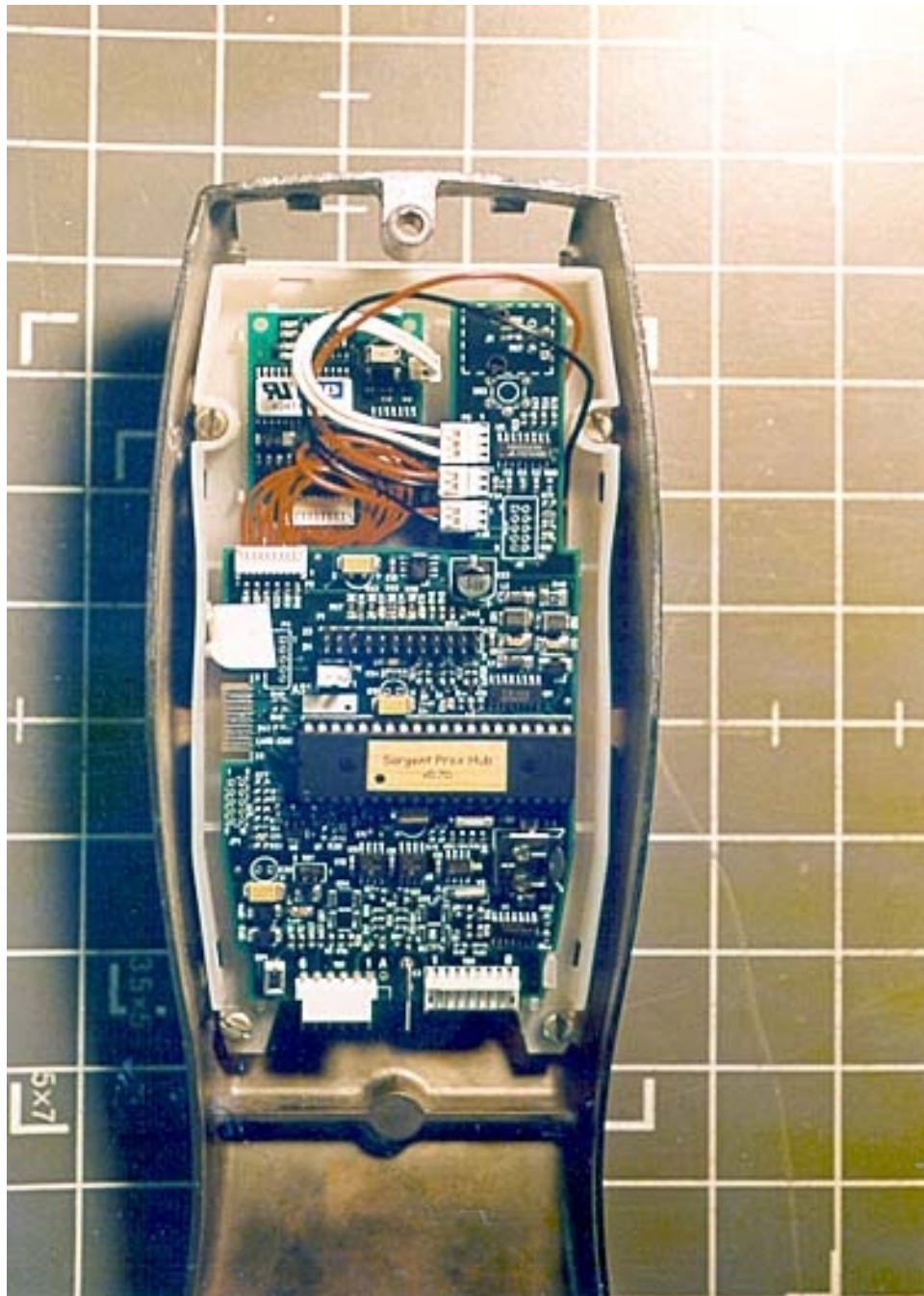
The internal composition of the models is the same. The difference between the PA1/2/3 and PK1/2/3 is the PK models have a keypad that is removed on the PA models.



Inside rear panel

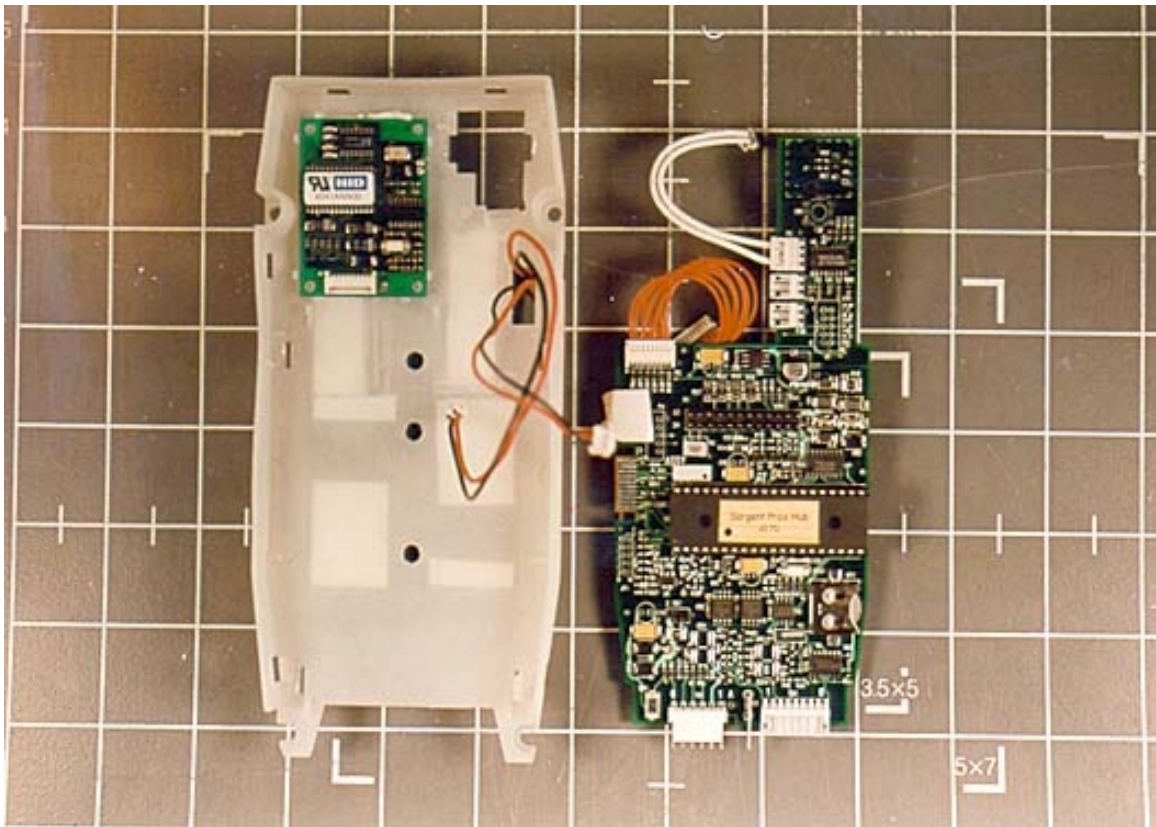


Inside back of rear panel

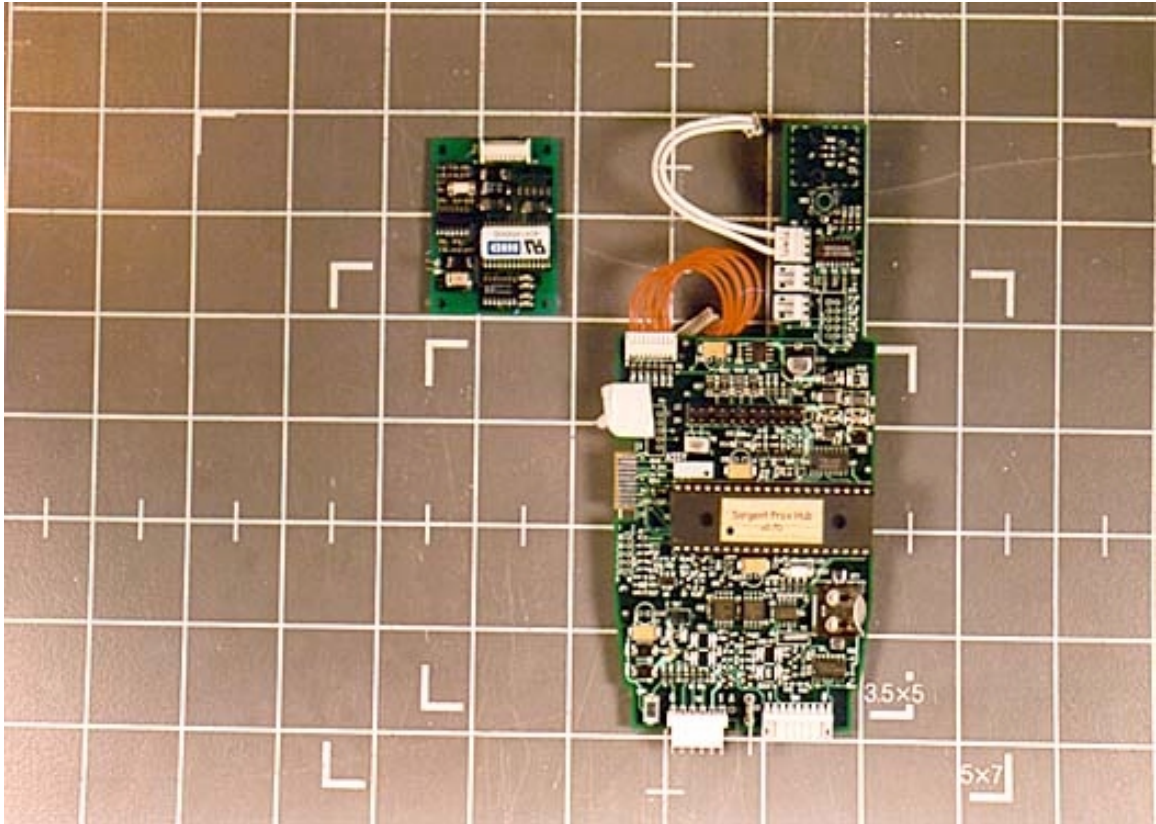


Back rear panel

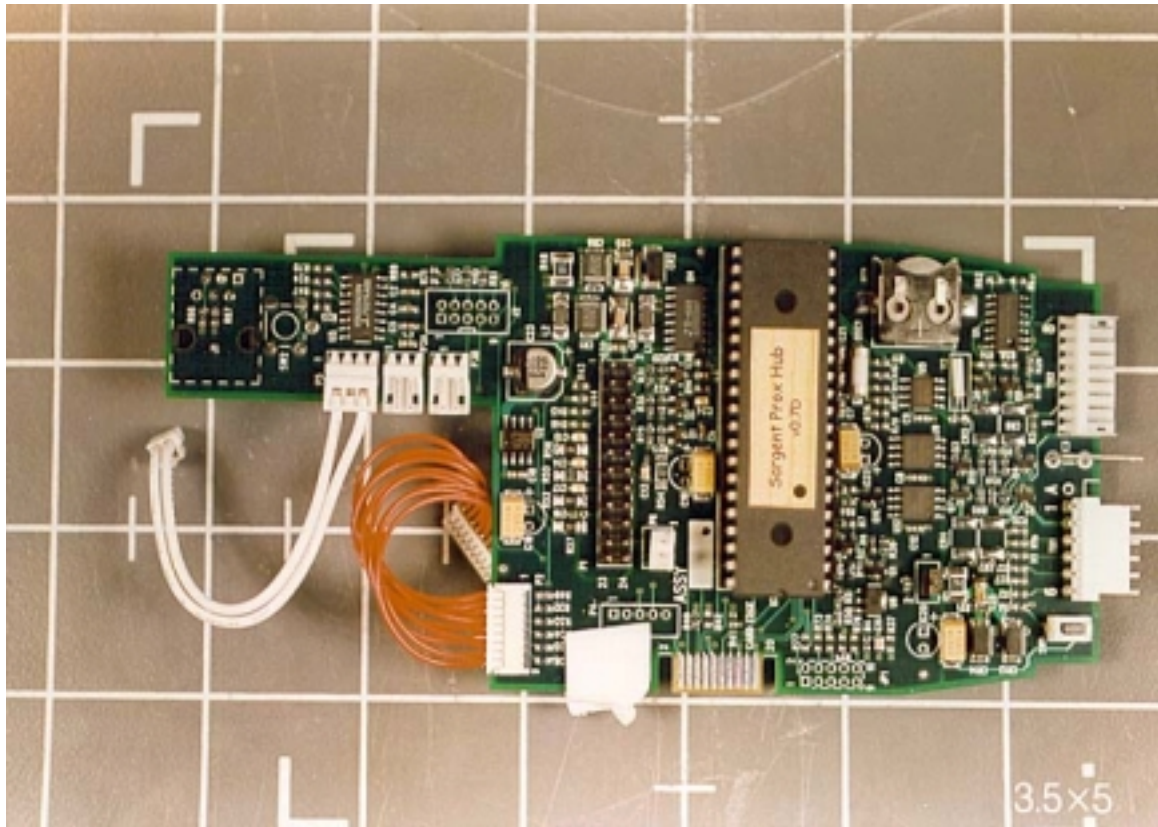




Back rear panel with enclosure separated

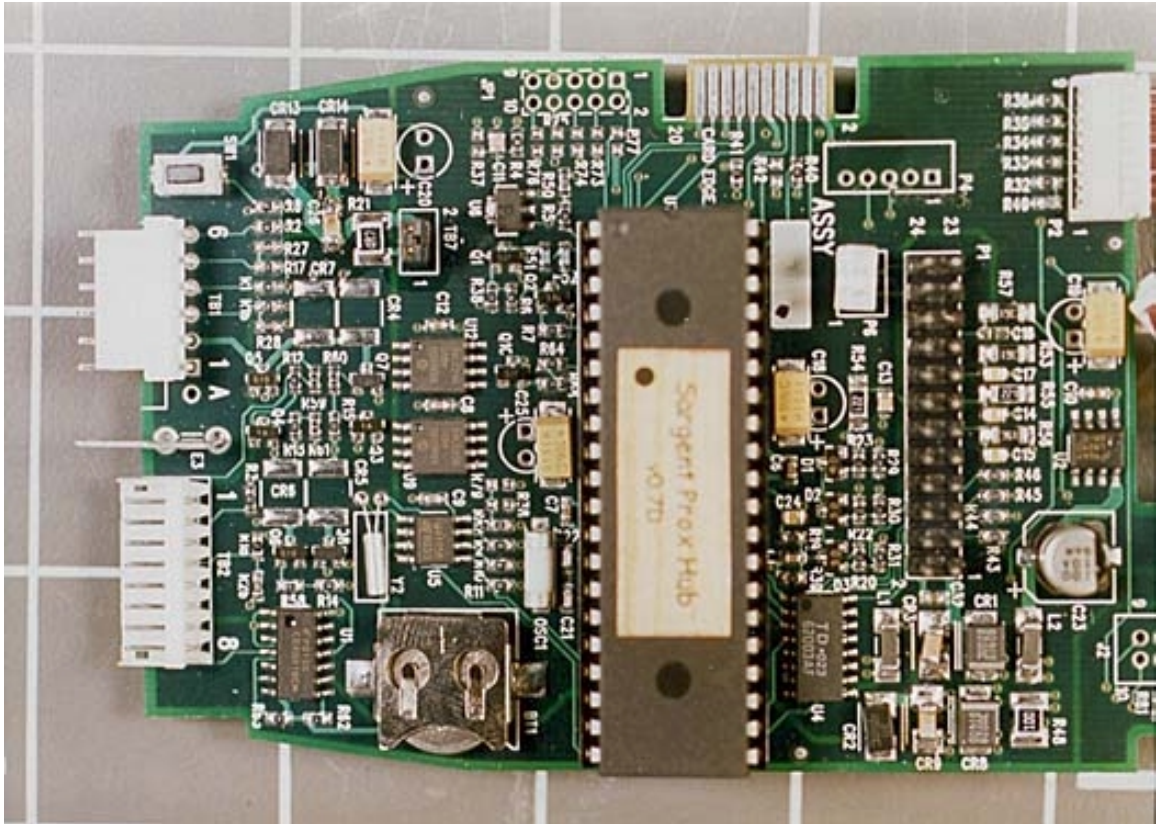


Back rear panel boards

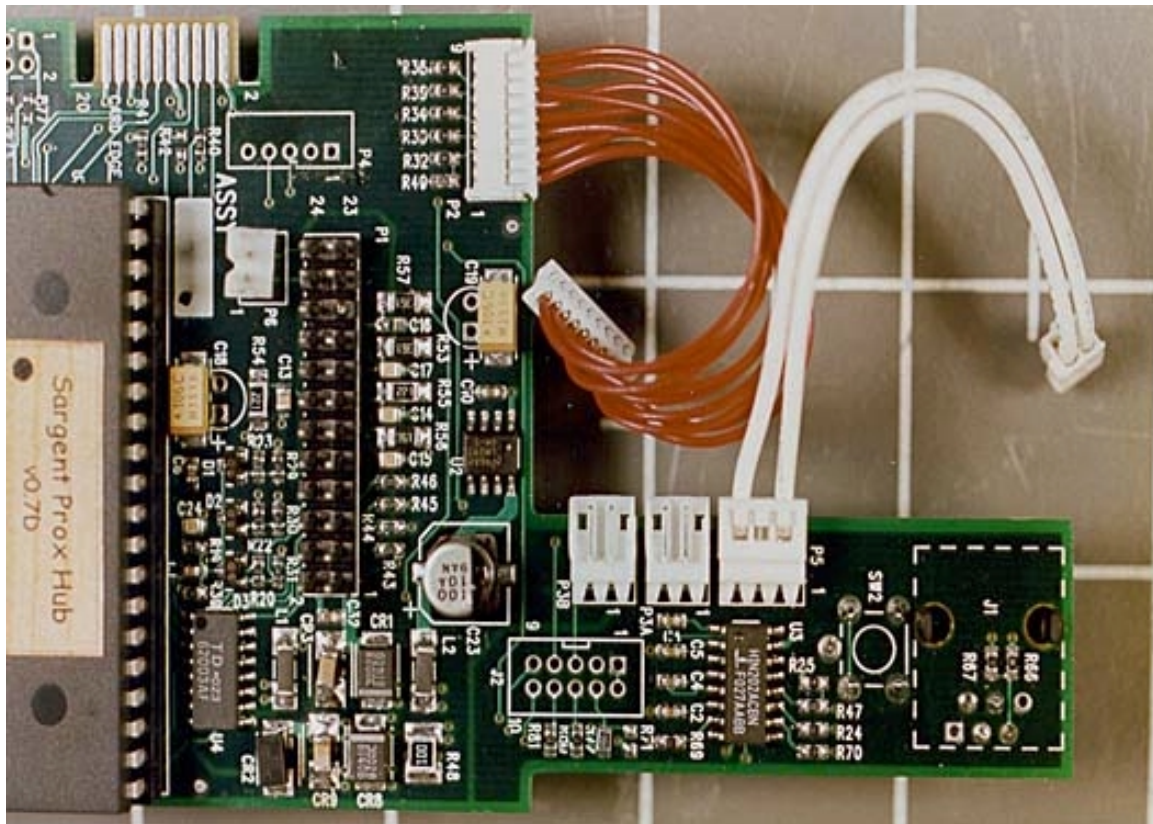


Front of board



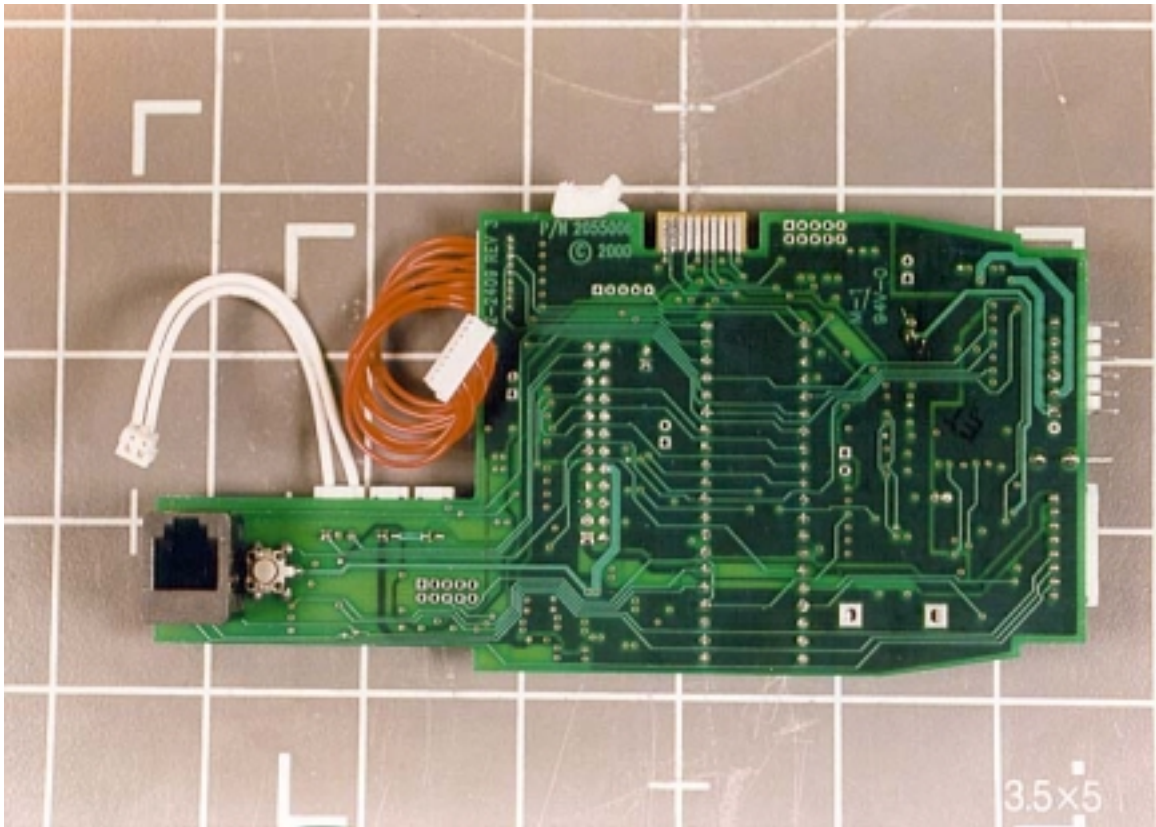


Close-up of part of the front of the board

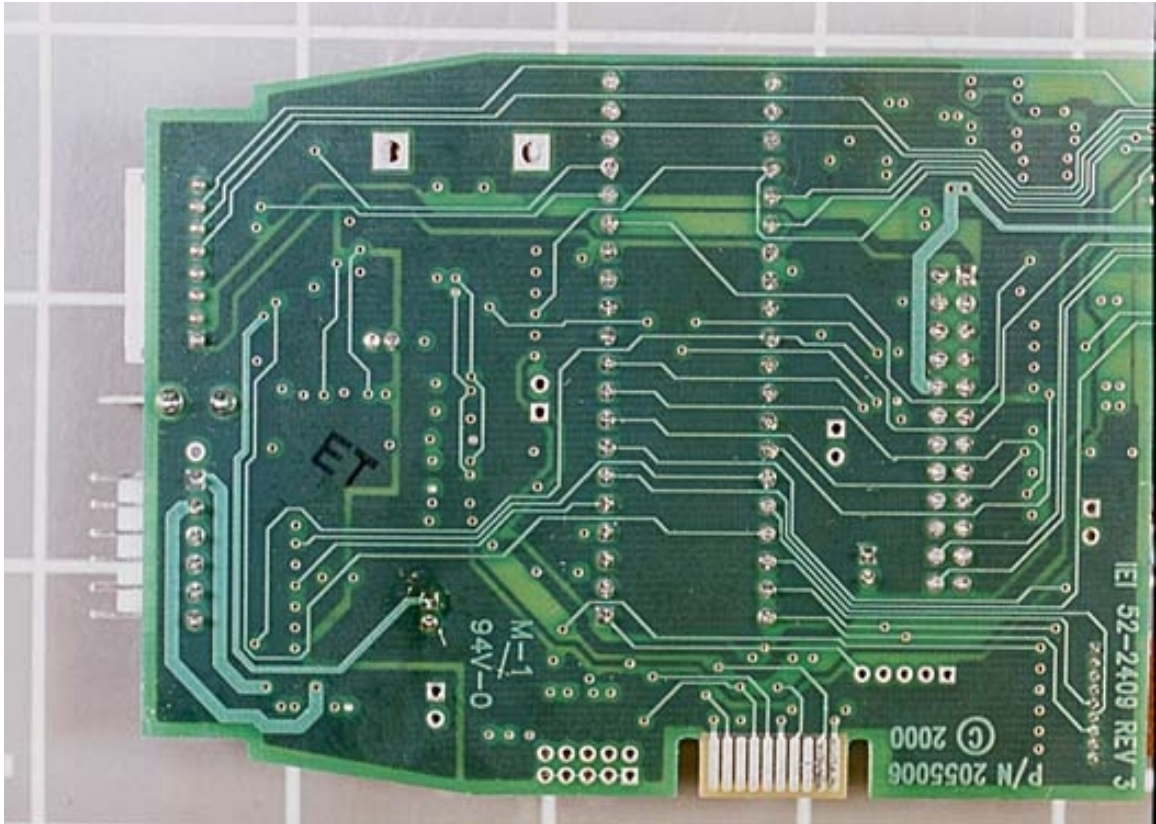


Close-up of the other part of the front of the board

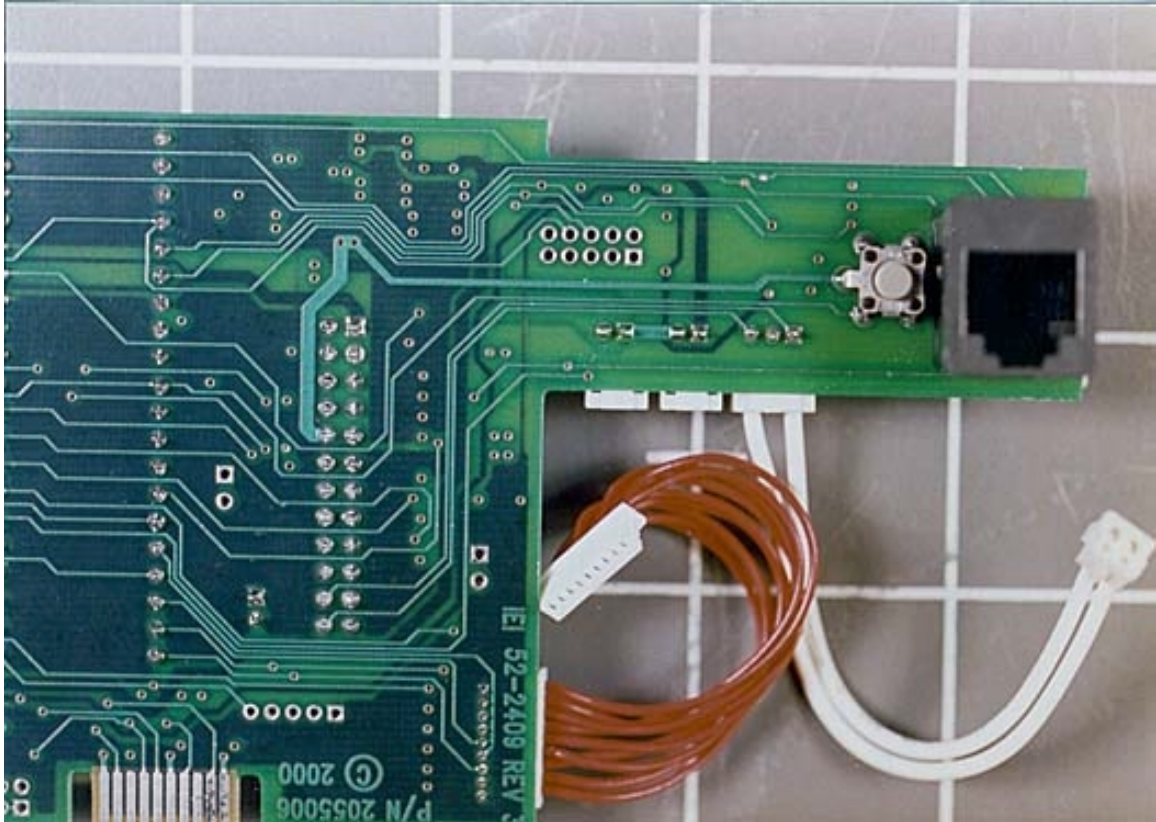




Back of board

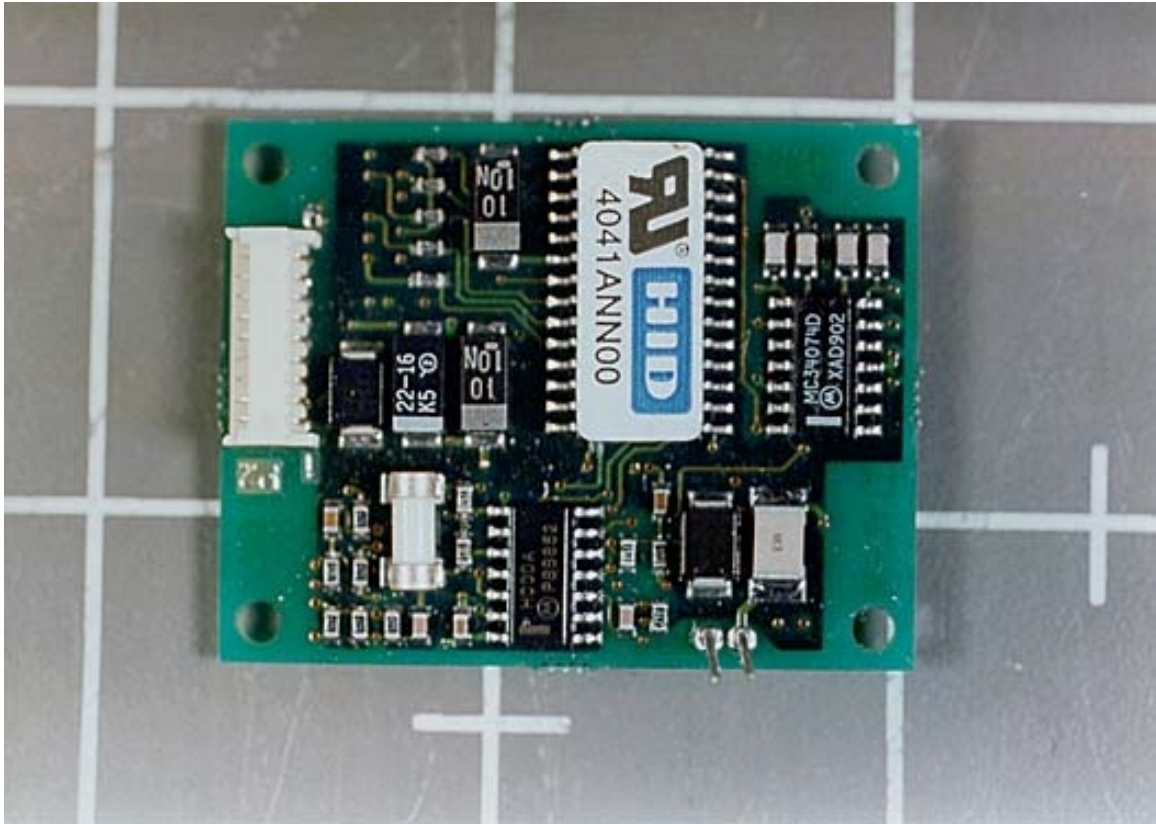


Close-up of the back of the board

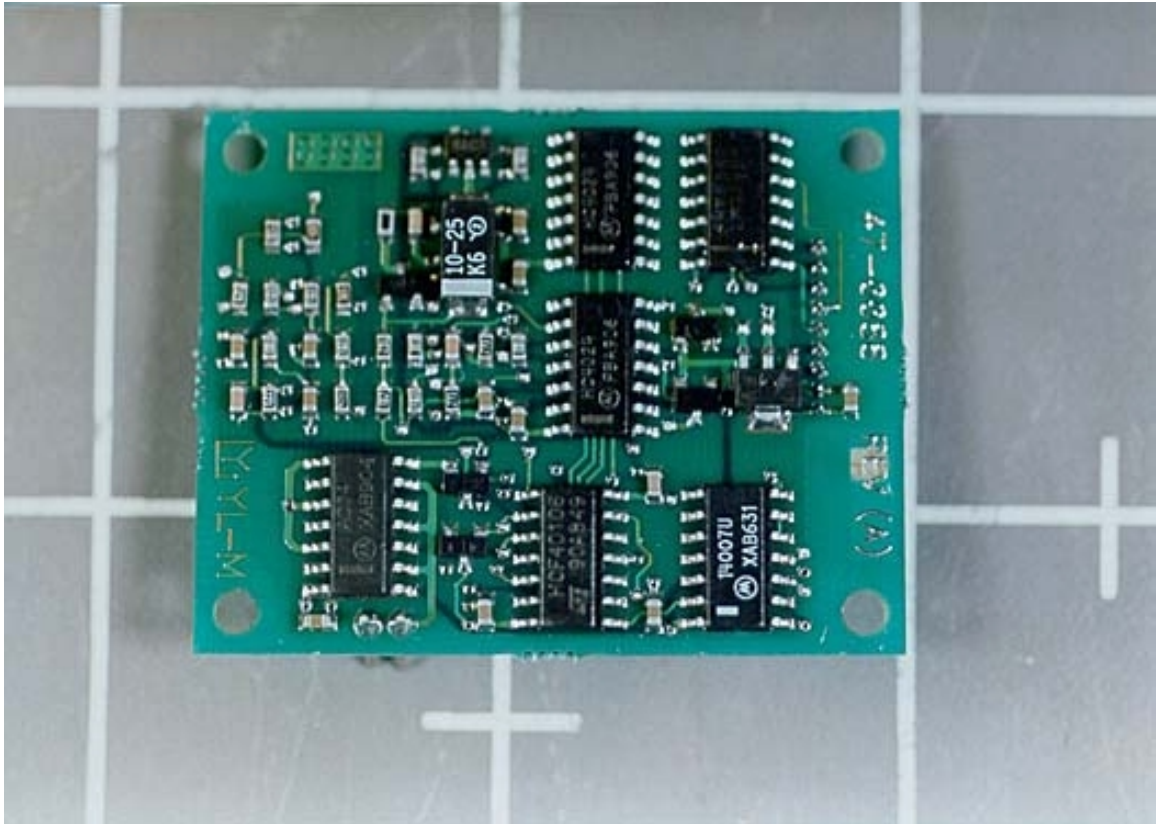


Close-up of the other portion of the back of the board

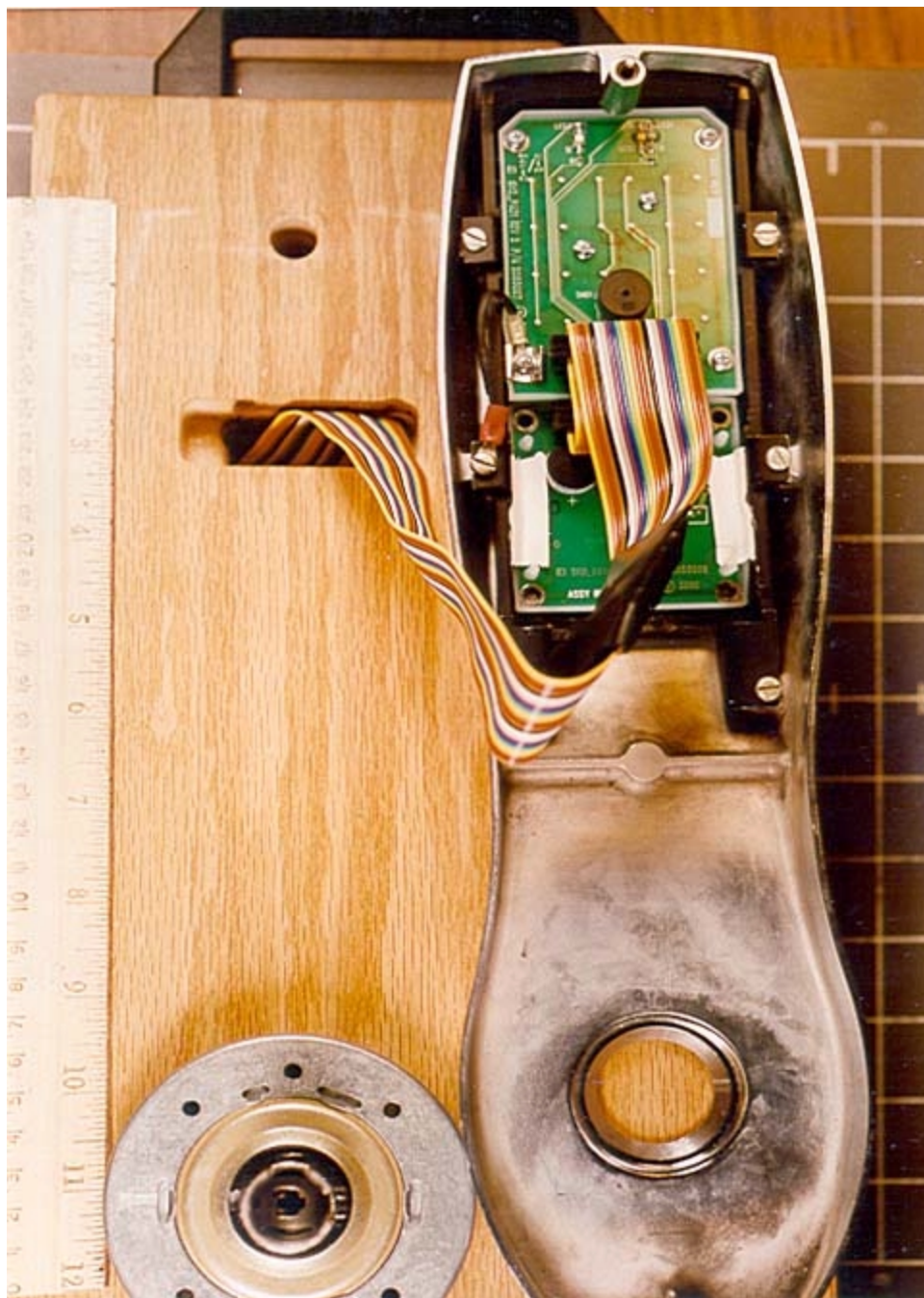




Front of small board

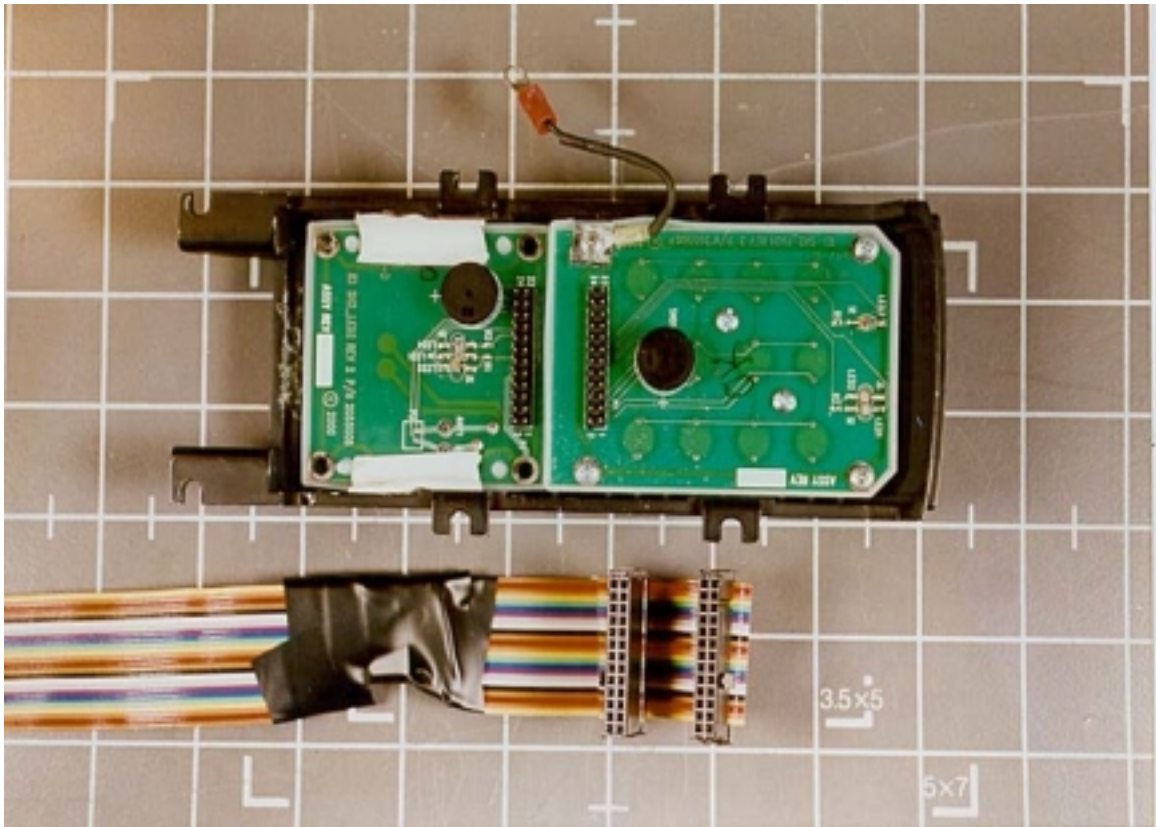


Back of small board

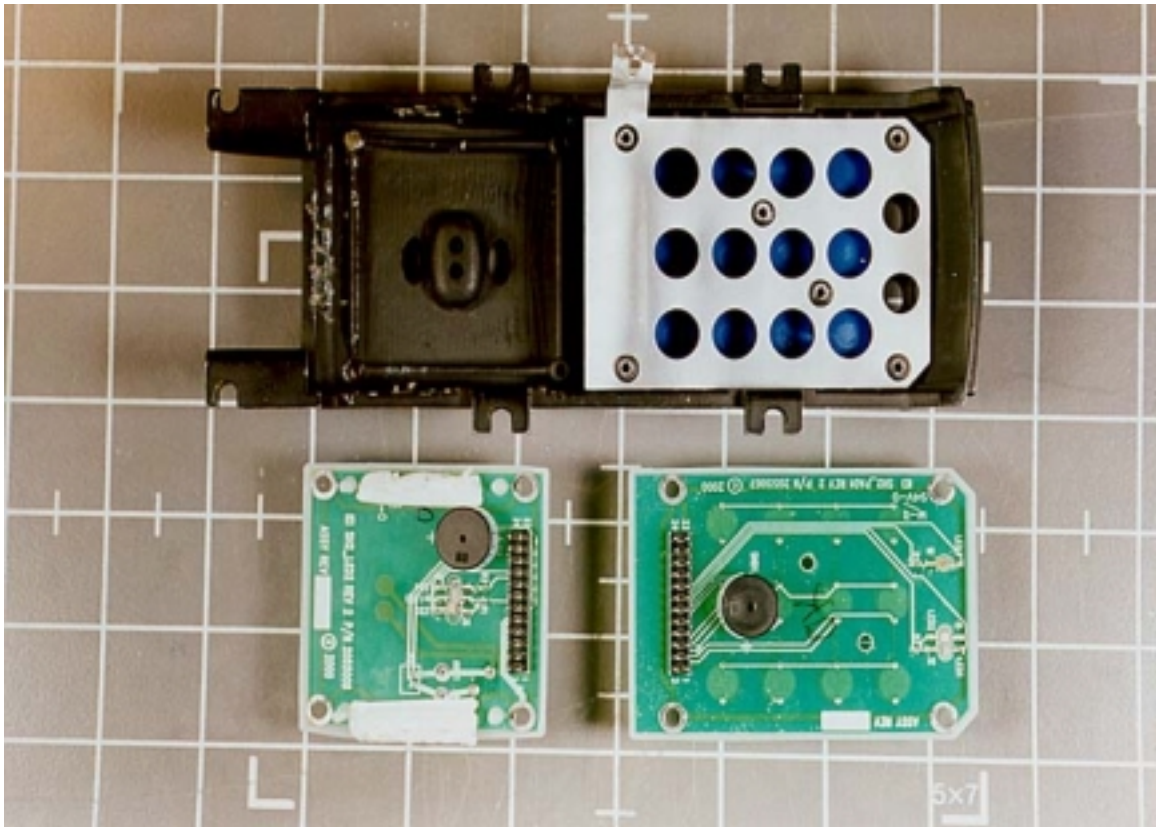


Back of front panel

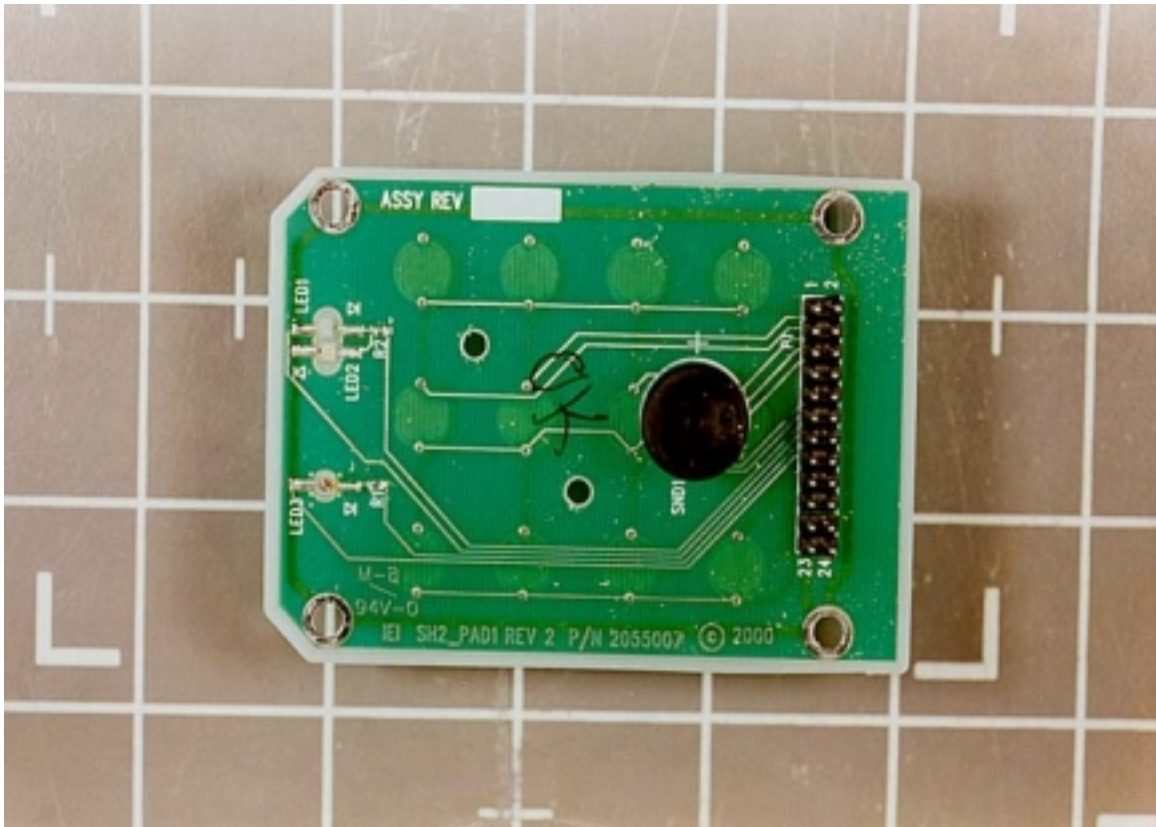




Back of front panel with metal removed

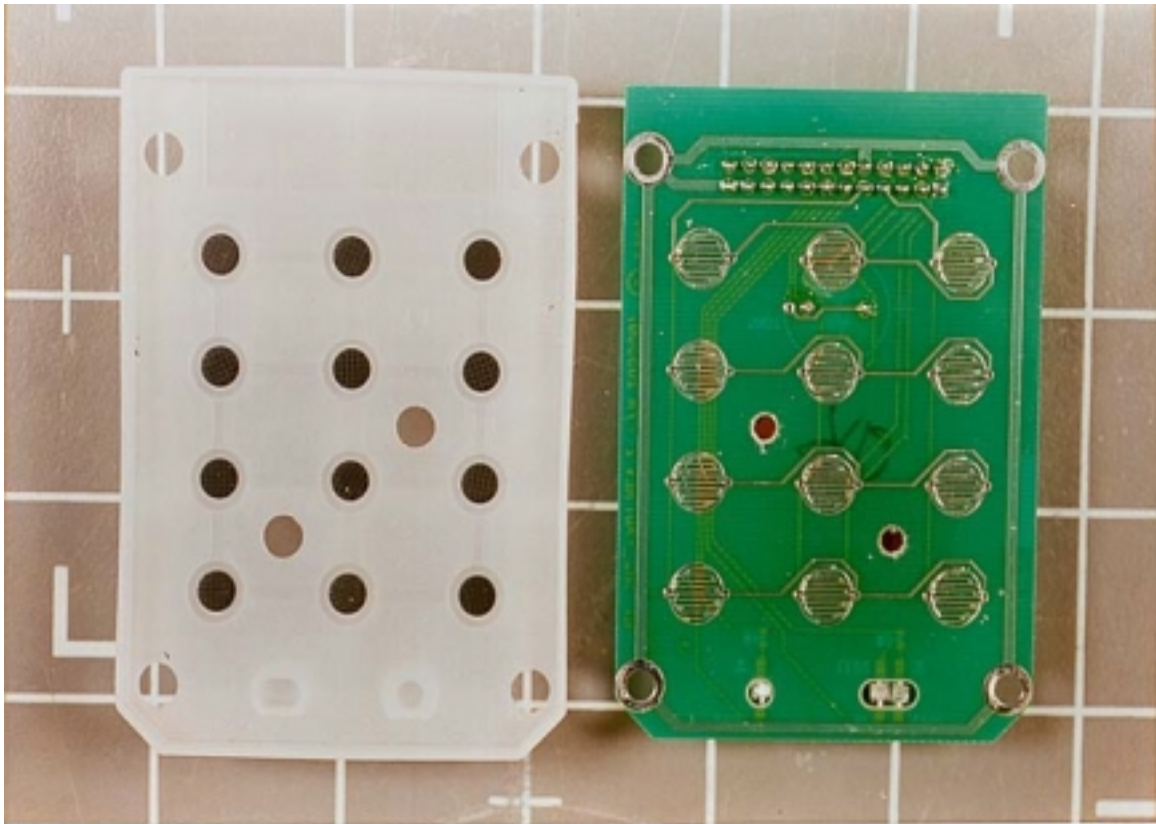


Back of front panel with enclosure separated

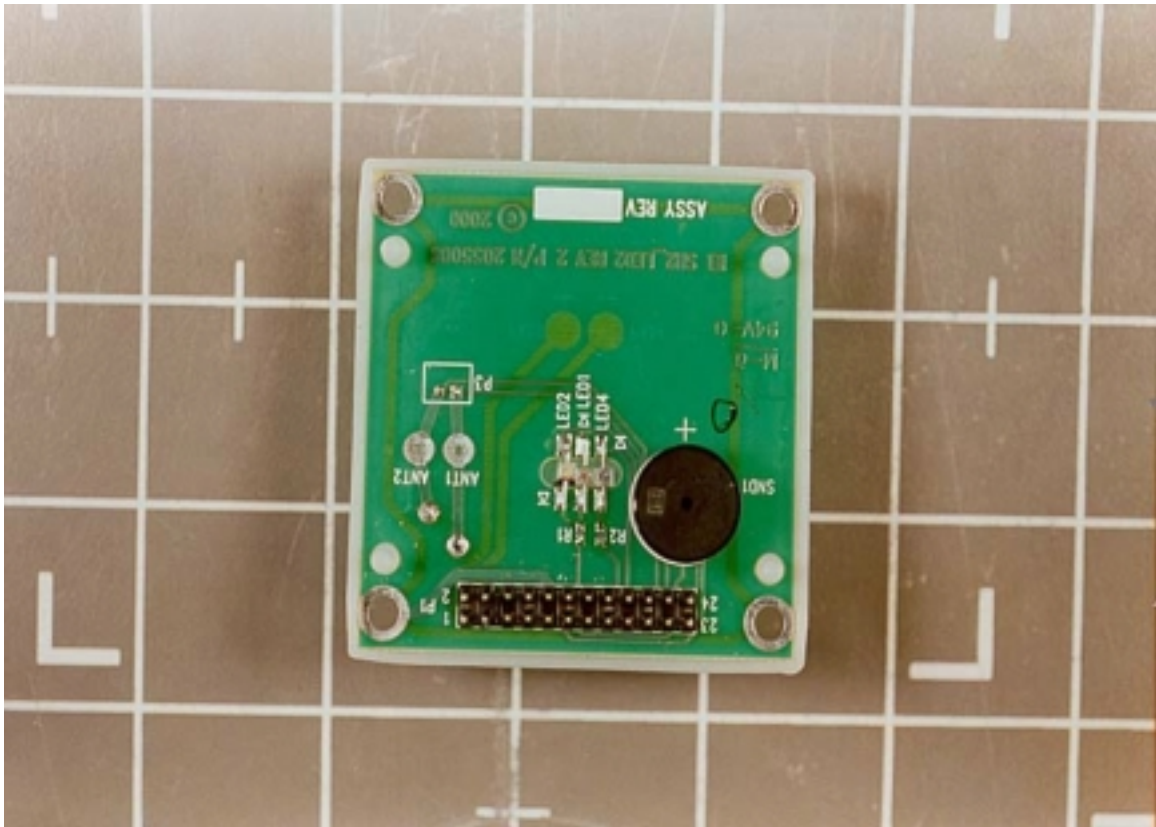


Back of top button board

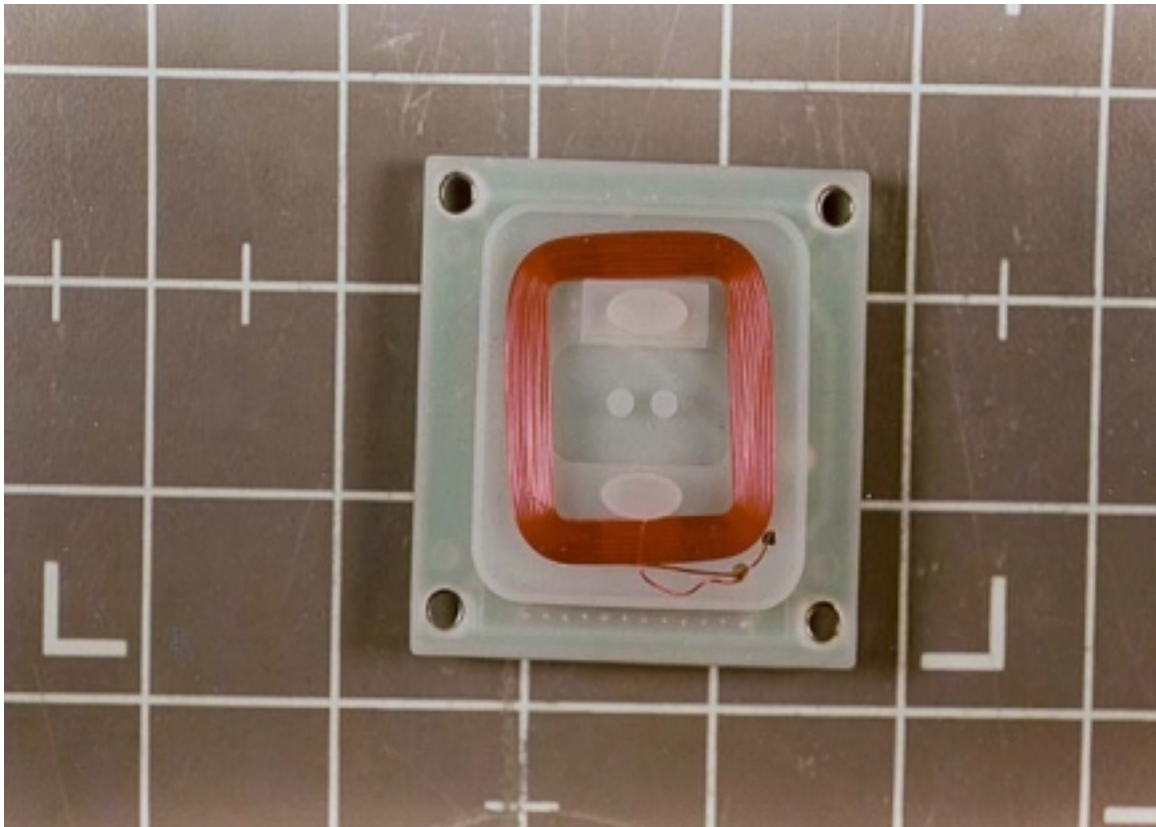




Front of top button board

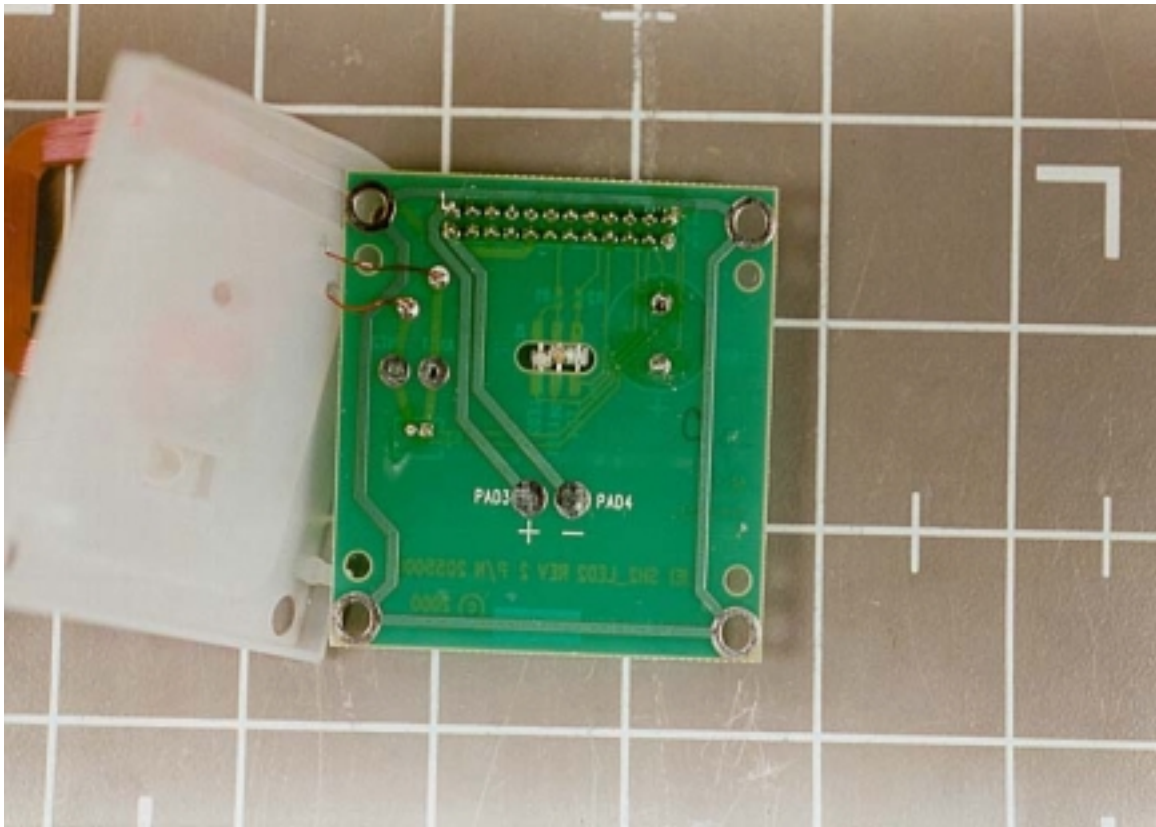


Antenna portion of bottom board

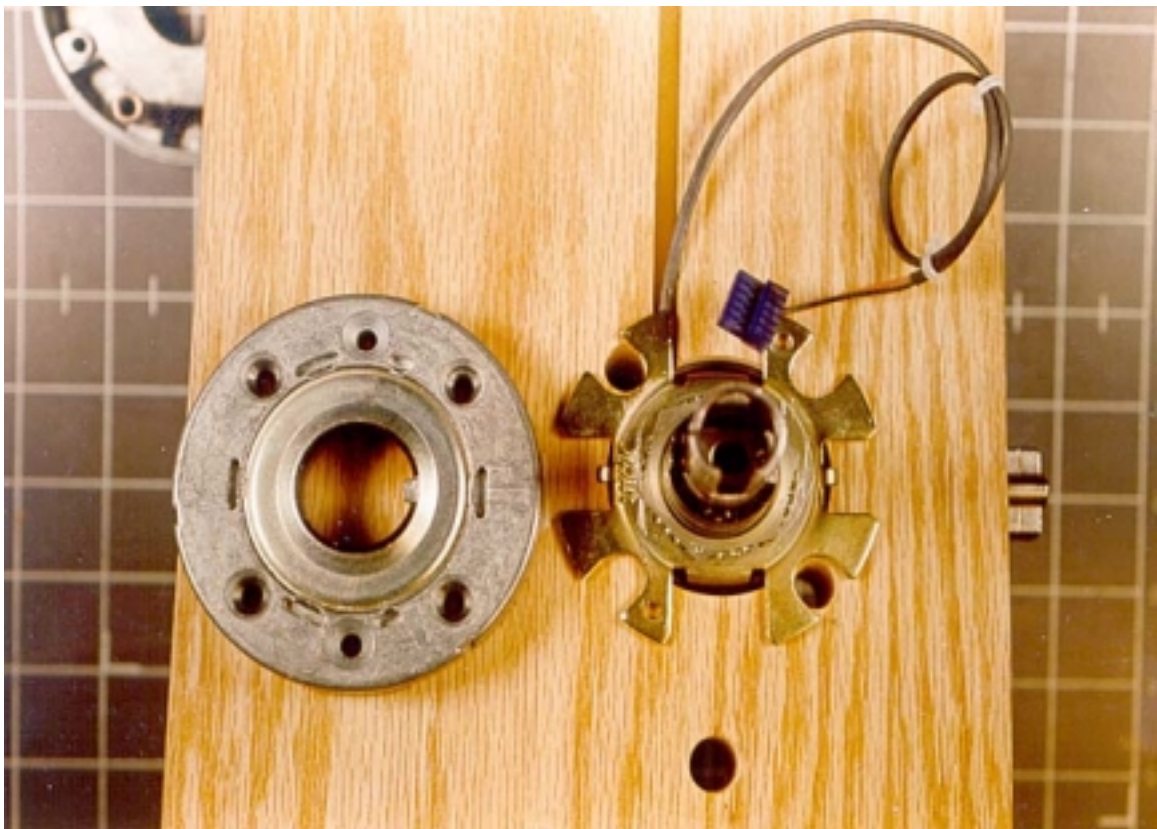


Front of antenna board





Showing how both sections of the board go together

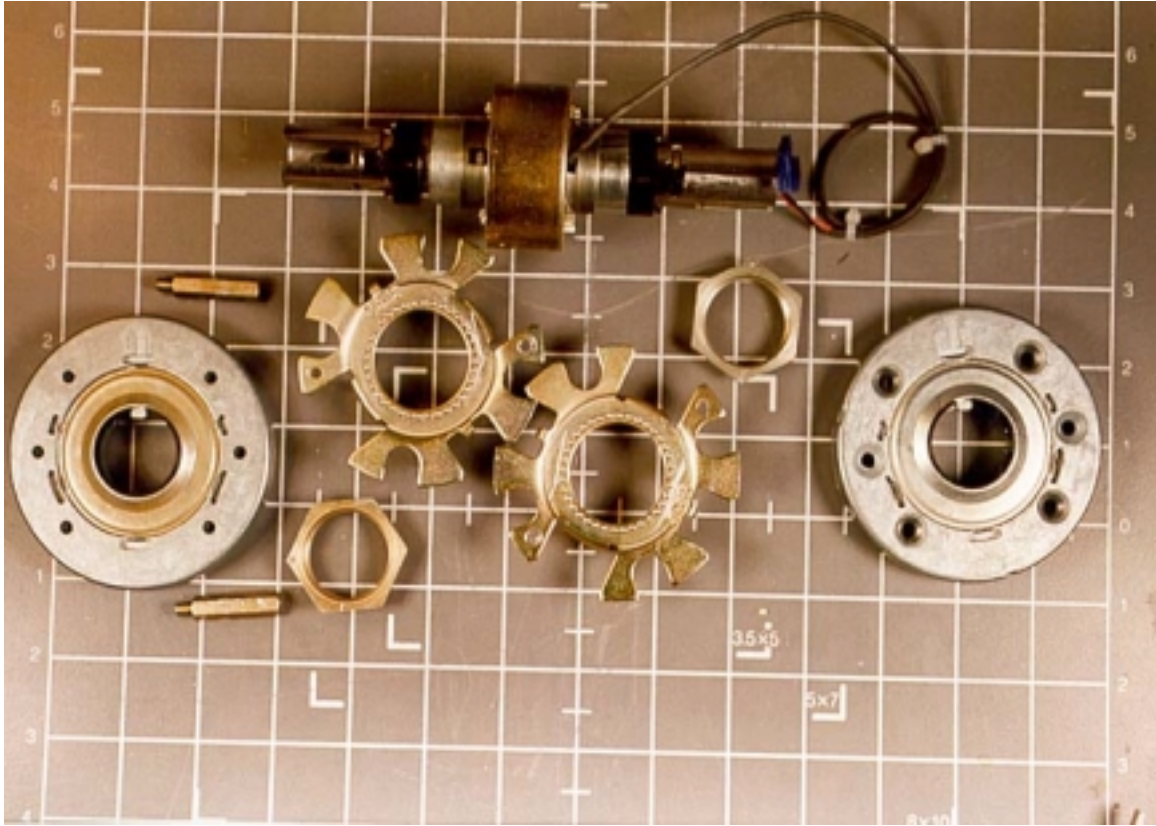


Back door latch

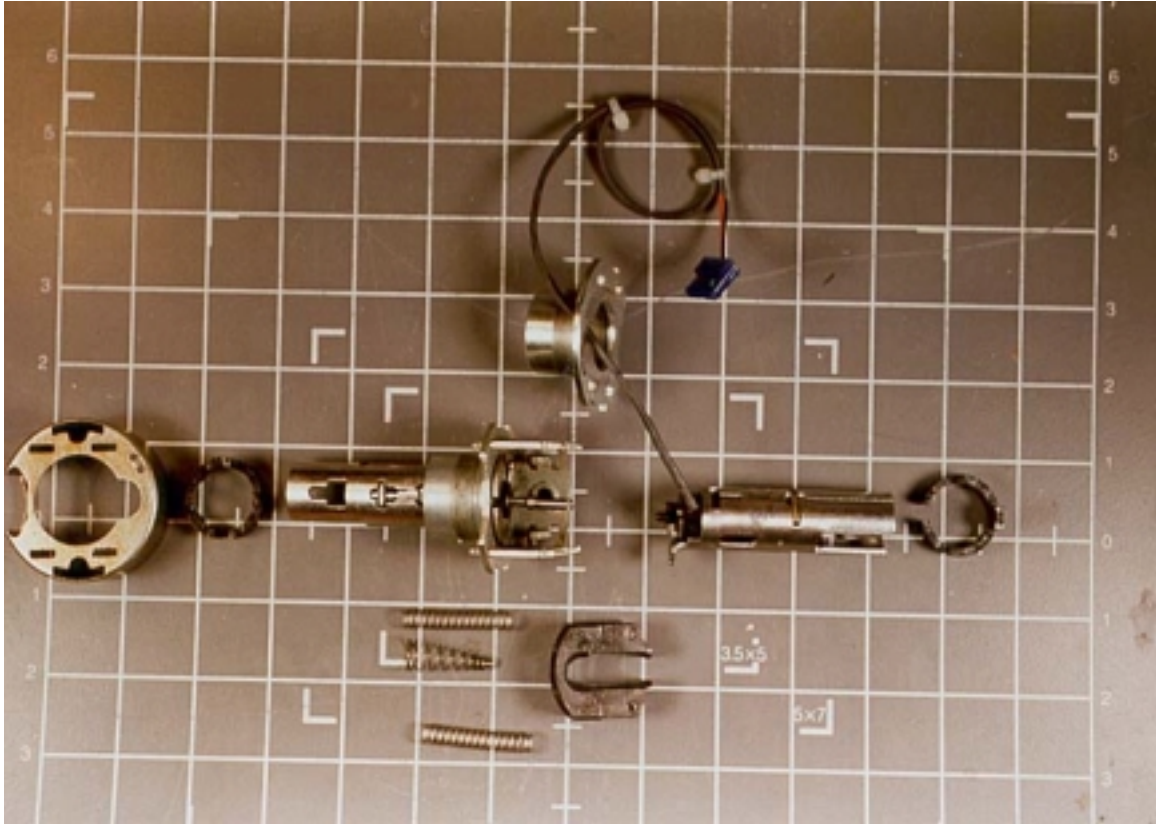


Back door latch with ring separated

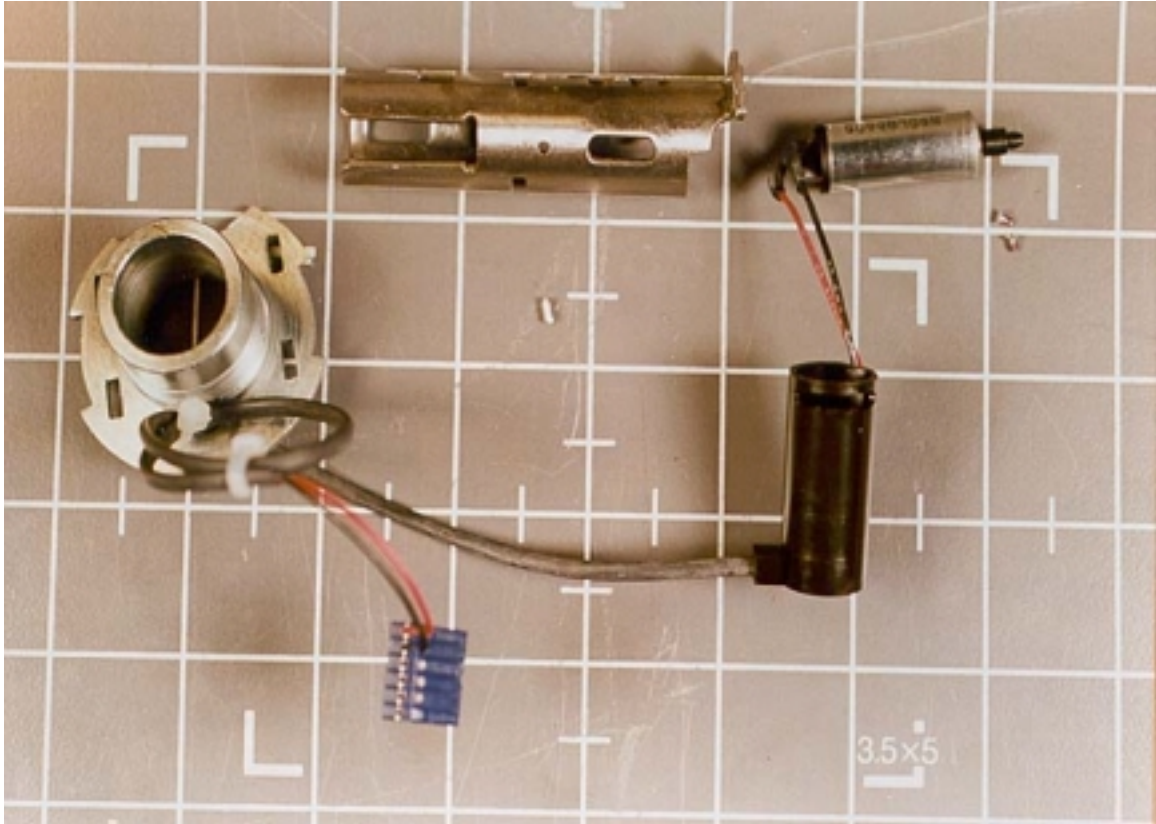




Door latch assembly with rings

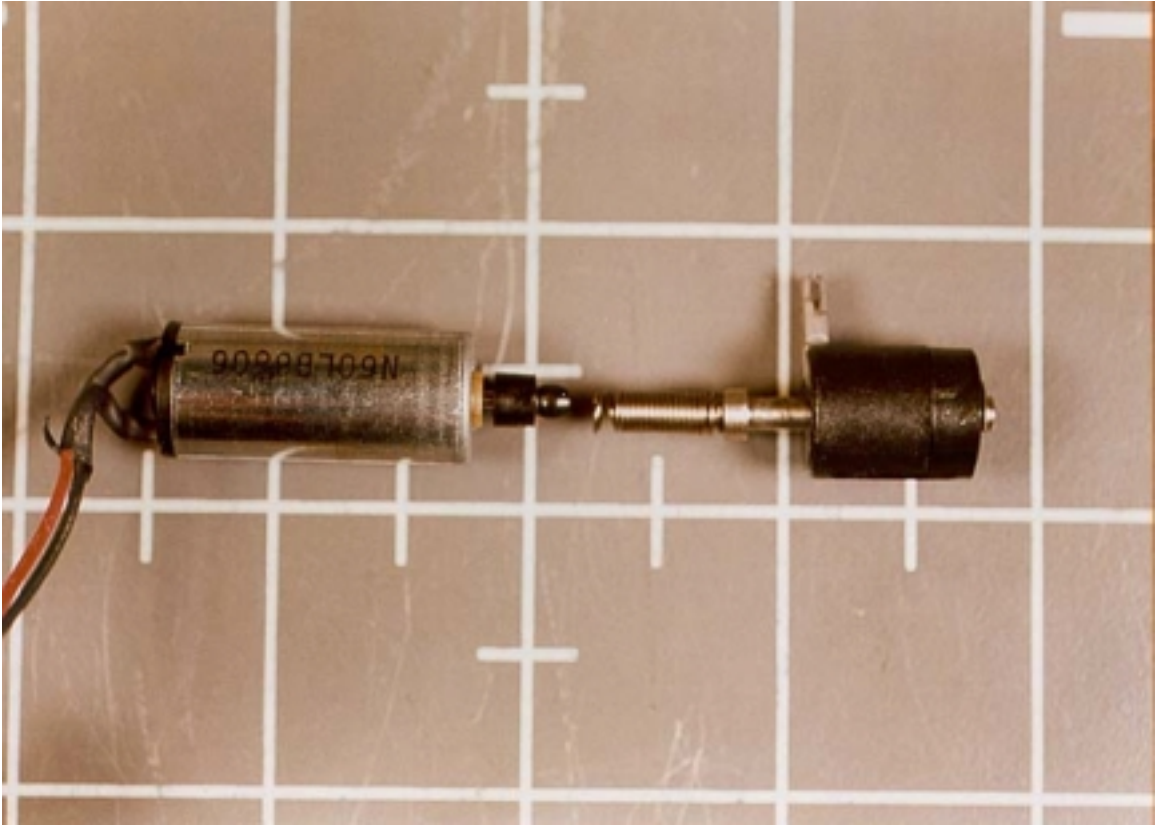


Door latch assembly without rings



Motor assembly





Close-up of motor assembly