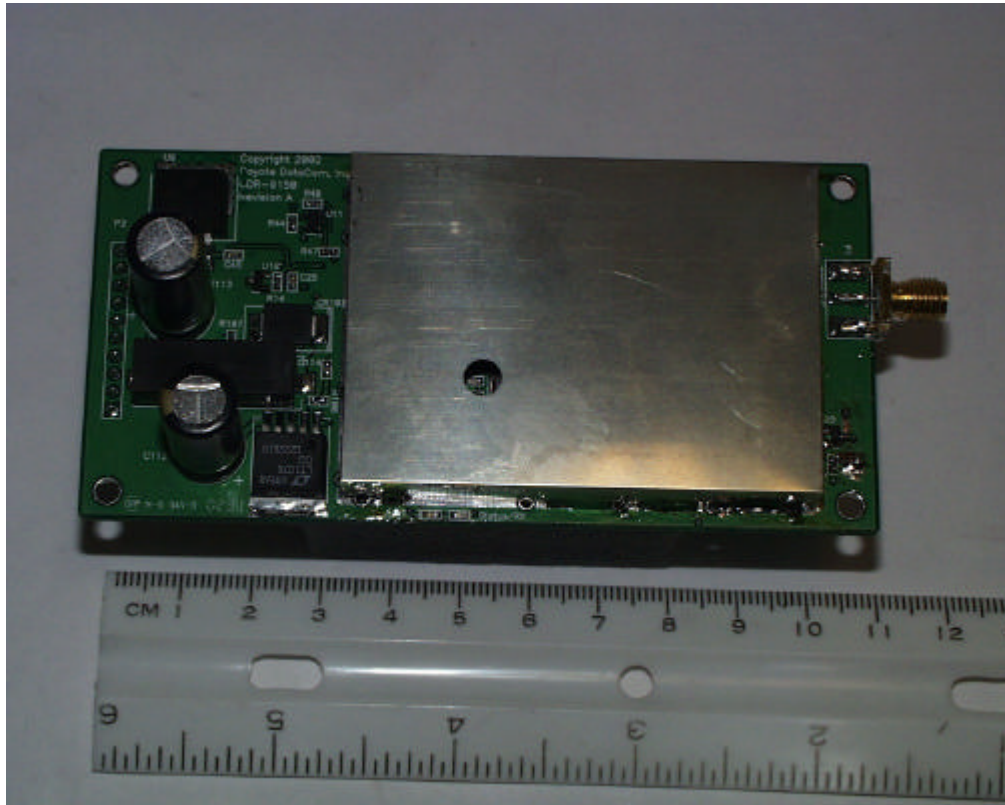
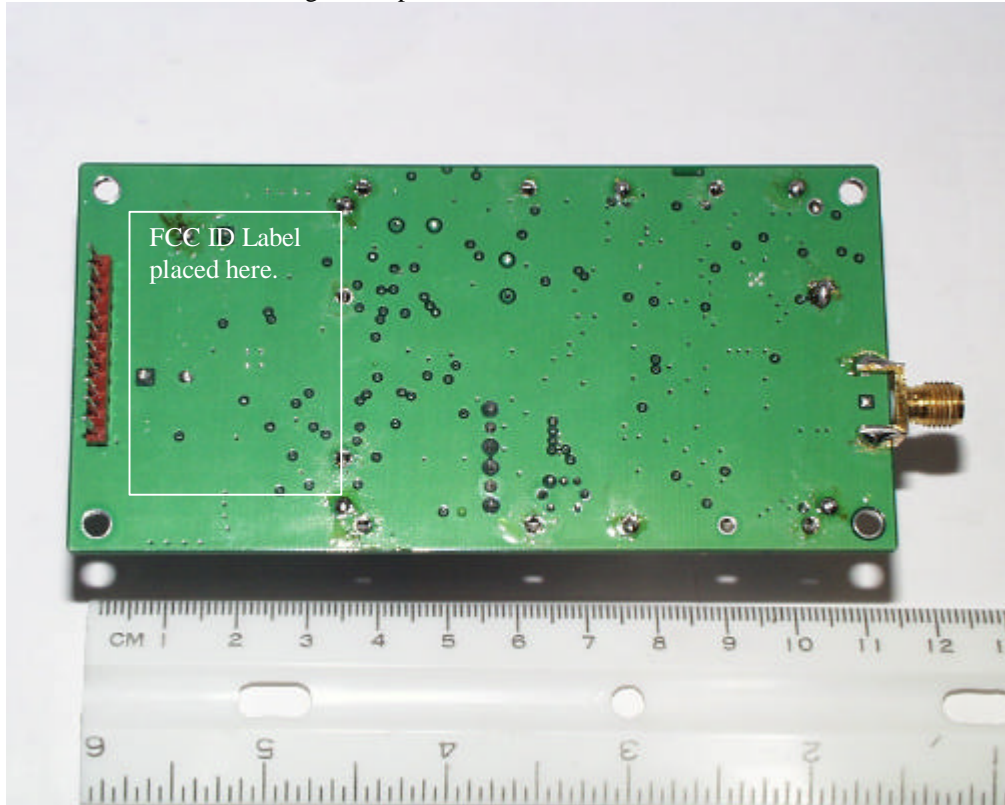


External Photos of CDR-9150 Module.



Bottom side of PCB showing solder plane and label location



ROGERS LABS, INC.

4405 W. 259th Terrace

Louisburg, KS 66053

Phone/Fax: (913) 837-3214

Coyote DataCom, Inc.

MODEL: CDR9150 Spread Spectrum Module

Test #: 020826

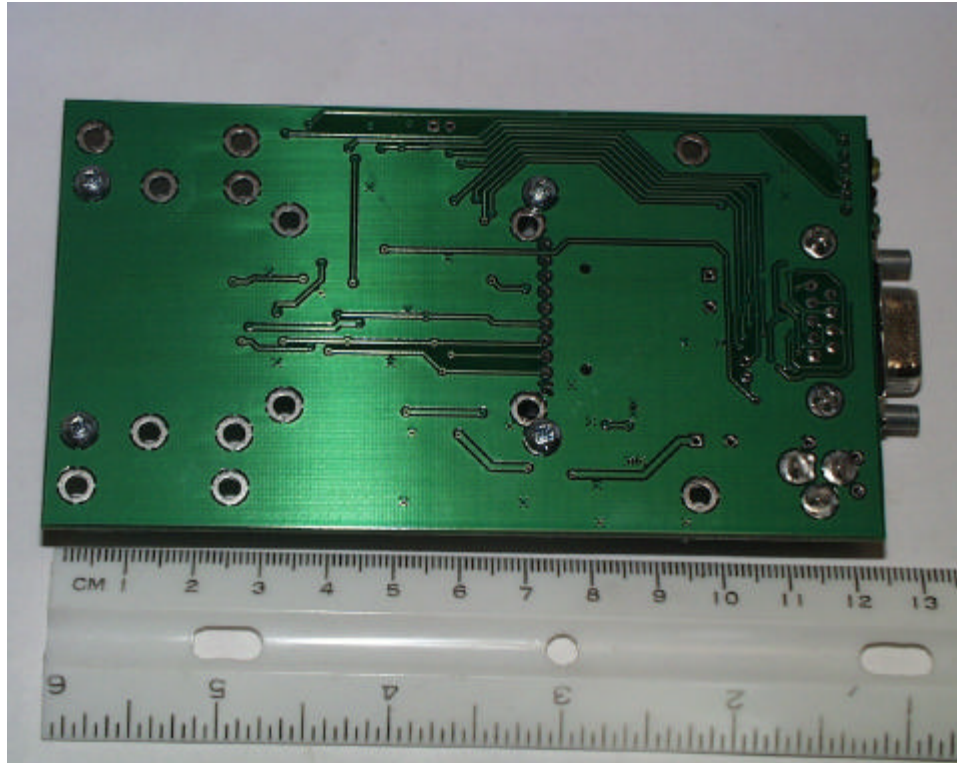
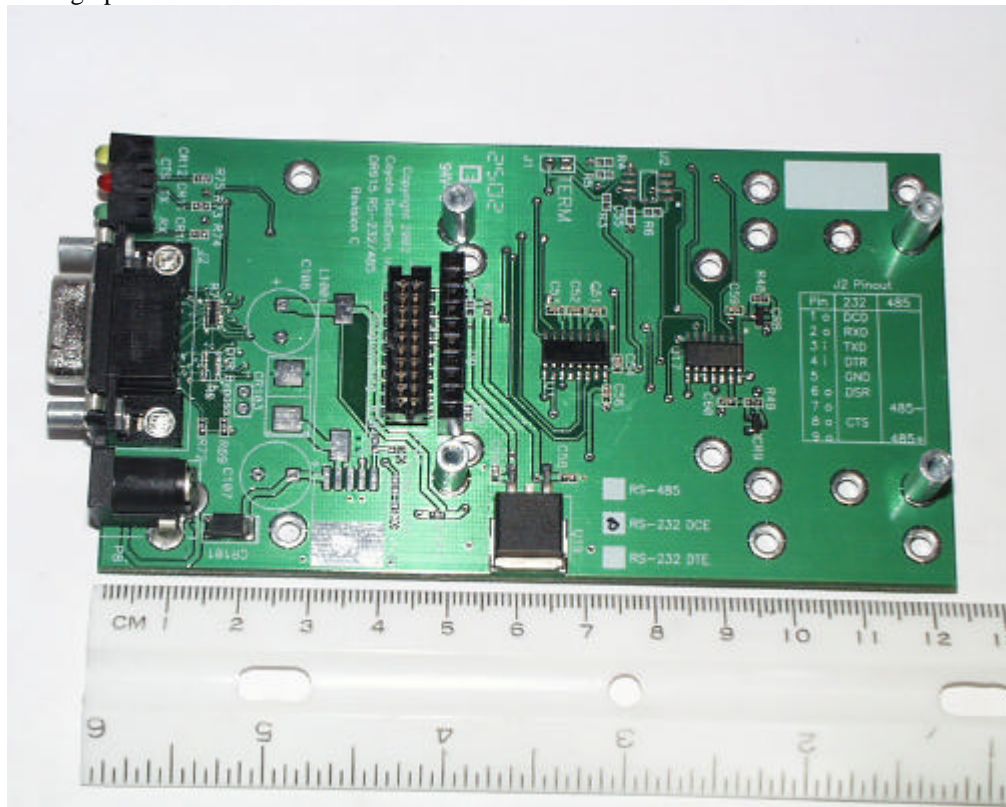
Test to: FCC Parts 2 and 15C

FCC ID#: PHO-CDR9150

Page 1 of 3

CDR9150ExtPho 03/20/2002

Photograph of test fixture interface board.



ROGERS LABS, INC.

4405 W. 259th Terrace

Louisburg, KS 66053

Phone/Fax: (913) 837-3214

Coyote DataCom, Inc.

MODEL: CDR9150 Spread Spectrum Module

Test #: 020826

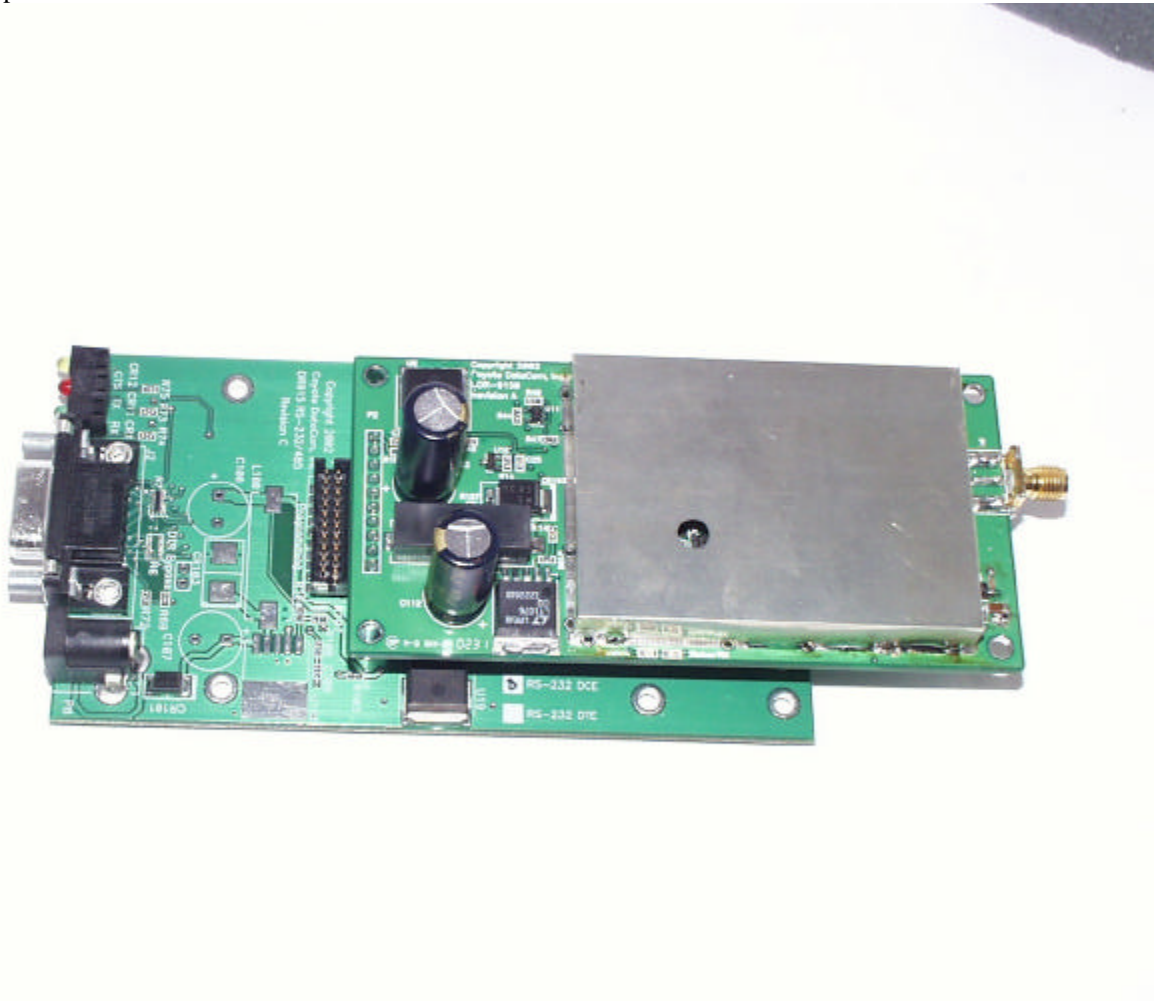
FCC ID#: PHO-CDR9150

Test to: FCC Parts 2 and 15C

Page 2 of 3

CDR9150ExtPho 03/20/2002

Photograph of EUT mounted on interface board.



ROGERS LABS, INC.

4405 W. 259th Terrace

Louisburg, KS 66053

Phone/Fax: (913) 837-3214

Coyote DataCom, Inc.

MODEL: CDR9150 Spread Spectrum Module

Test #: 020826

FCC ID#: PHO-CDR9150

Test to: FCC Parts 2 and 15C

Page 3 of 3

CDR9150ExtPho 03/20/2002