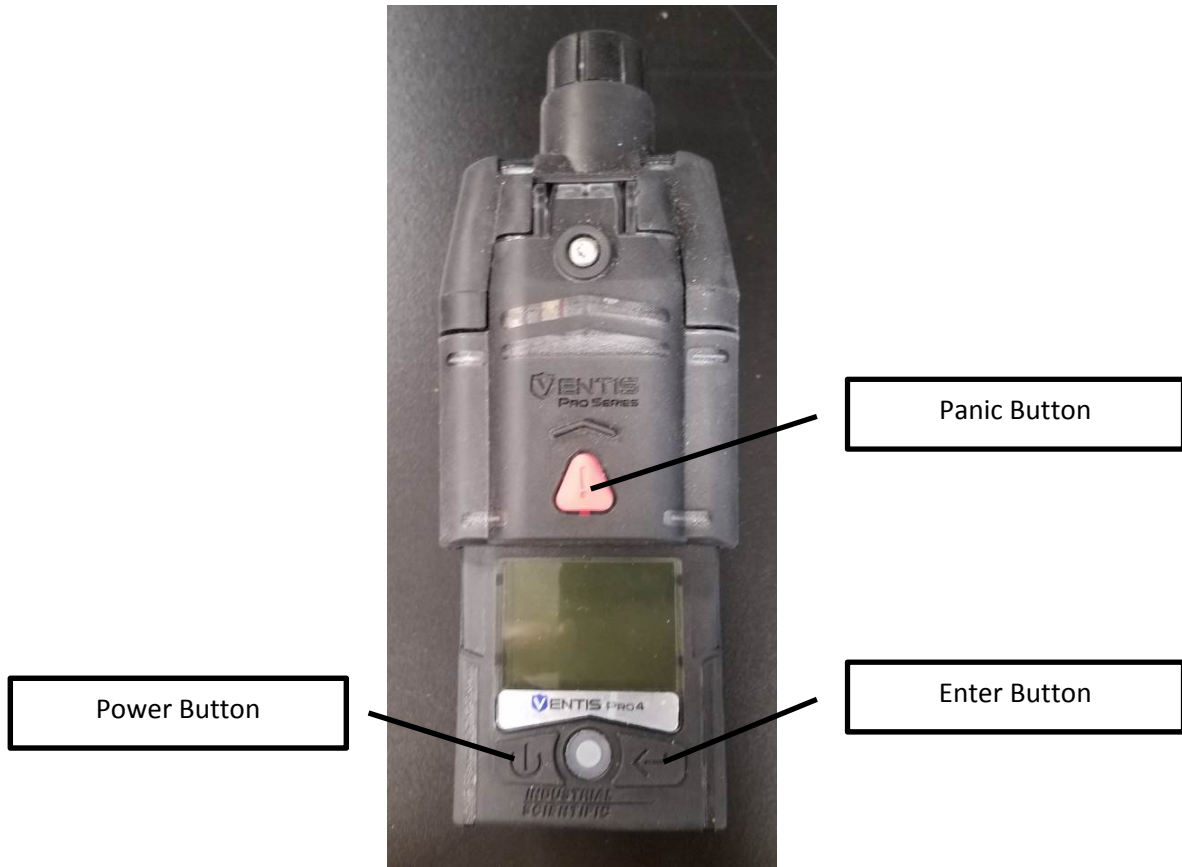


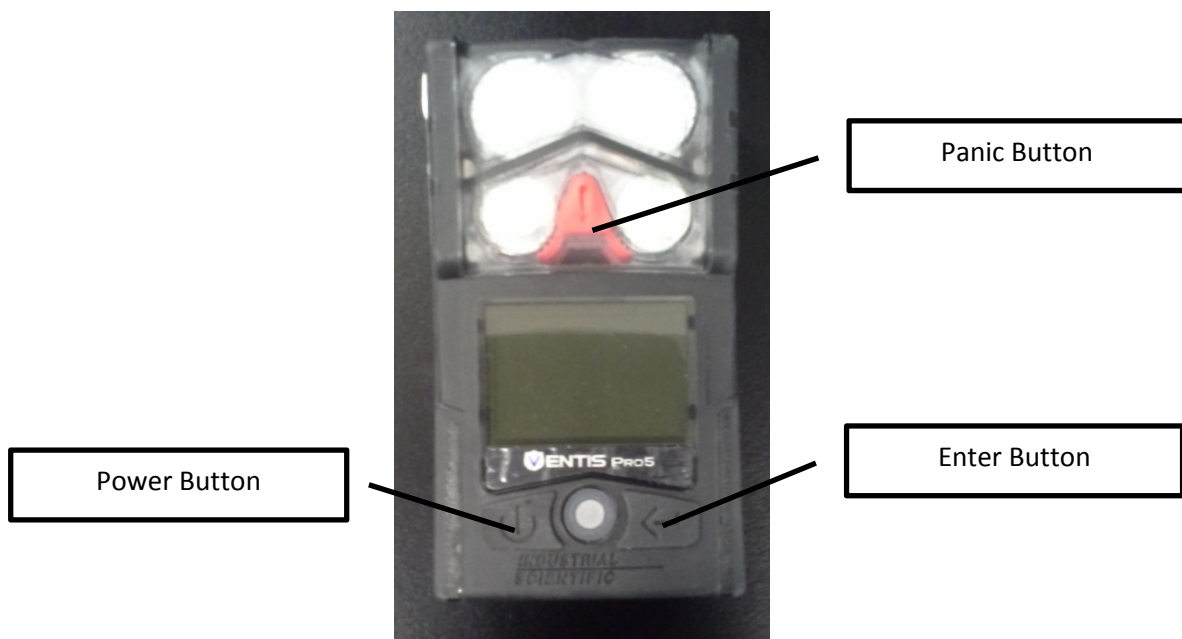
Ventis Pro 4 and Ventis Pro 5 Internal / External Pictures

Ventis Pro 4 and Ventis Pro 5 can be either aspirated or diffusion. Radios are the same in the Ventis Pro 4 and Ventis Pro 5. The singular difference between these 2 units are firmware allowing different sensor sets to be used with the Ventis Pro 5 that are not available on the Ventis Pro 4

External View Aspirated V Pro 4



External View Diffusion V Pro 5



Ventis Pro 4 and Pro 5 use e-labeling displayed on the LCD during start up to indicate the FCC and ISED Canada ID numbers of the radios used. Ventis Pro 4 and Ventis Pro 5 aspirated and diffusion models use the same radios.

Image showing old BLE FCC ID Number

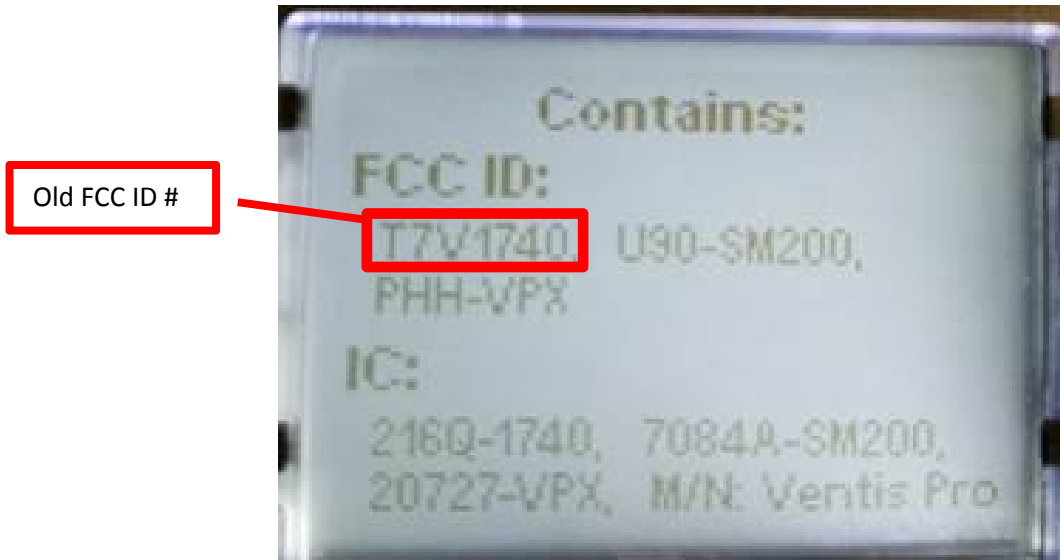
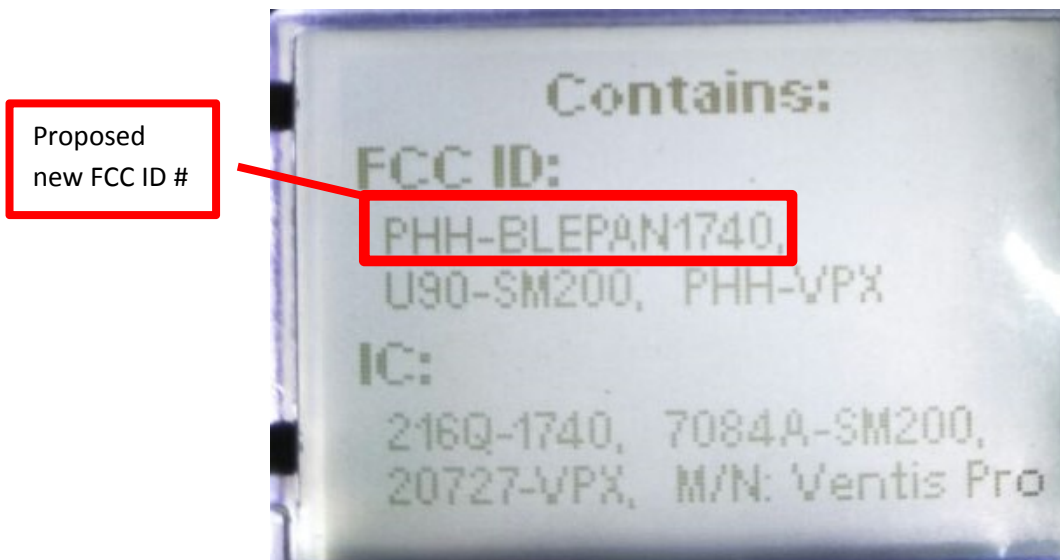
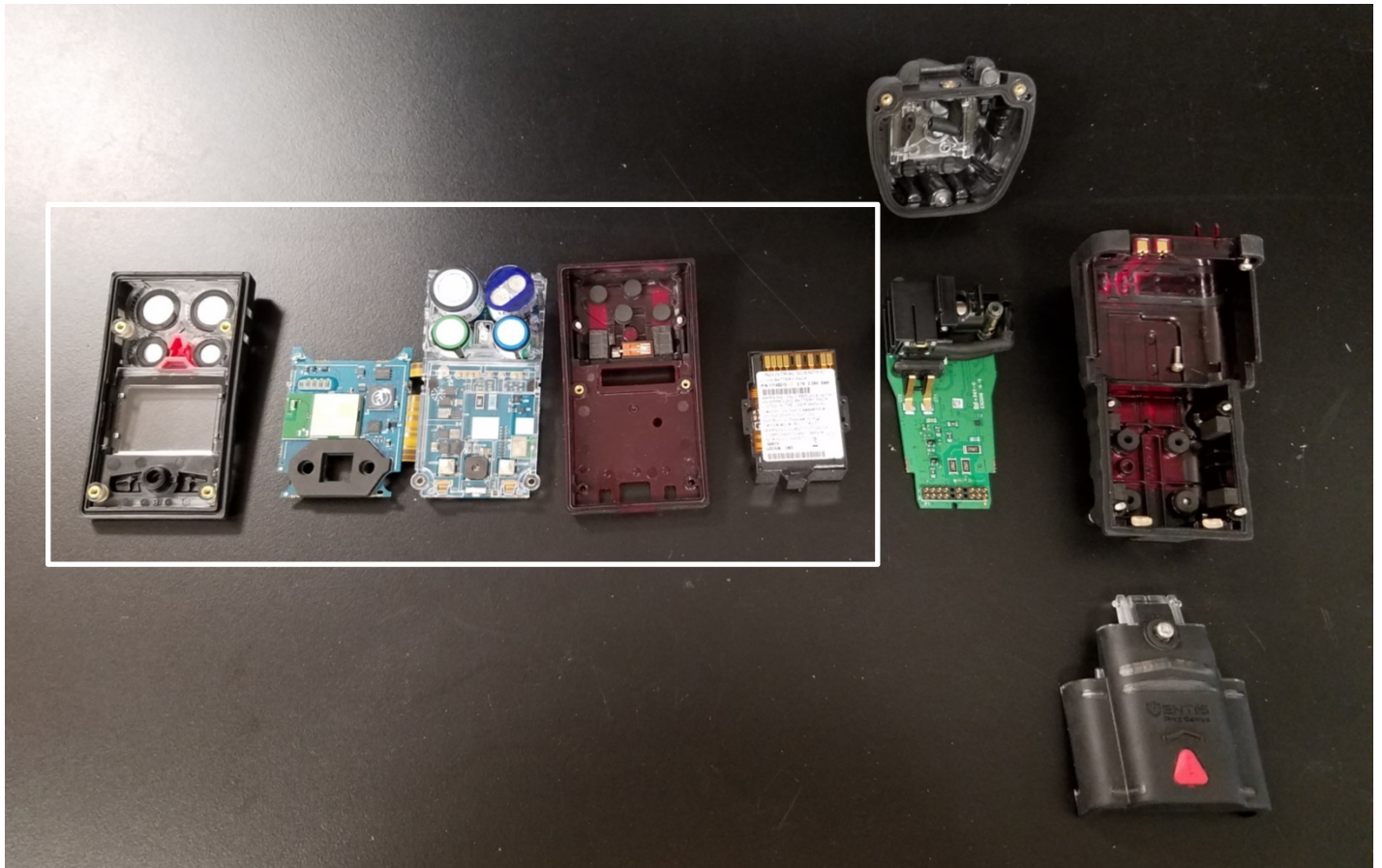


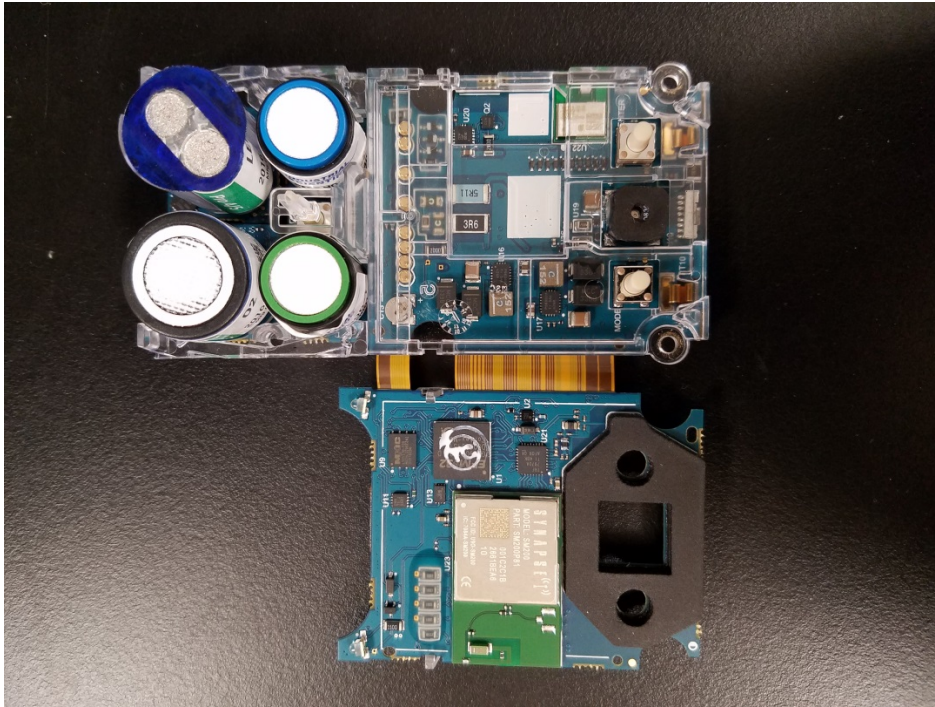
Image showing proposed new BLE ID number



Internal View Aspirated and Diffusion (Diffusion model uses the left most parts outlined in white only)



Closer view of Internal Circuit Board (side 1)



View of circuit board w/o sensors or plastic carrier (side 1)



Bluetooth Radio Module

Near Field Communications Loop Antenna

LENS (MESH) Radio Module

View of circuit board w/o sensors or plastic carrier (side 2)

