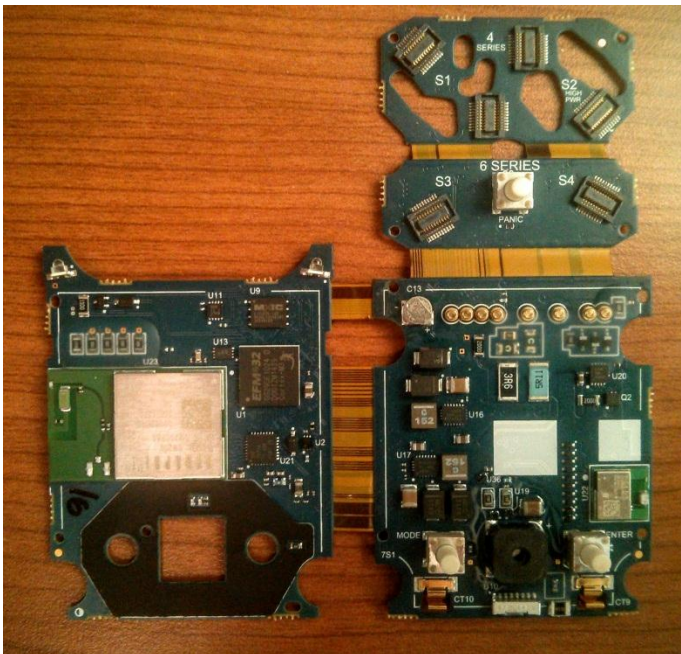


**Internal Photos**

1. Shown below, instrument battery (bottom), case front (left) and case back (right) are removed. PCBA assembly on plastic frame, with gas sensors and LCD installed (center).



2. Shown below is the PCBA with LCD and sensors removed and PCBA removed from its plastic frame. The NFC shield (black, bottom left) is shown applied to the PCB antenna.



The opposite side of the PCBA is shown below, with the NFC antenna shown at bottom right.

