



USER'S MANUAL



AXW-L1900
axess•tel

INTRODUCTION

The Fixed Wireless phone operates through a wireless connection instead of a landline phone cable, enabling the subscriber to set up the phone at any where wireless service is available.

Axesstel CDMA 2000 Fixed Wireless Phone provides high quality and superior performance with many features such as superior voice quality, optional data service, caller ID, three-way calling, call waiting, short message service, etc. A large 3-line dot matrix liquid crystal display provides user-friendly interface for quick and easy information display.

NOTE: Data services are not supported on AXW-L800 model

Features

1. Hands Free Dialing*
2. Signal Strength Indicator
3. Redial
4. Volume Control
5. Dust-proof Laminate Keypad
6. Battery Power Backup
7. LCD Screen
8. One-touch and Two-touch Dialing
9. Automatic Sending
10. Phonebook
11. Short Message Service

* Hands-Free Dialing: Lets you attempt to dial without lifting the handset.
Once the call is connected, simply pick up the handset to talk.
(Note: Speaker phone feature is not supported.)

T ABLES OF CONTENTS

Safety Precautions.....	3	Selecting Time Mode.....	26
Checking Parts.....	4	Setting the Alarm.....	27
Setting up Your Phone	5	Checking and Clearing Call Times	28
Getting to Know Your Phone.....	7	Setting Warning Alerts.....	29
Display Icons.....	8		
Function Keys.....	9		
		Advanced Features	
Basic Operation		Changing Greeting Message.....	31
Making Calls	11	System Reset.....	31
Redial.....	12	Restricting Use of the Phone.....	32
Receiving Calls.....	12	Locking / Unlocking the Phone.....	32
Adjusting Volumes	13	Changing the Lock Code.....	32
Choosing the Ring Tone.....	13		
Message Service.....	14	Optional Features	
		Call Forwarding	35
		Call Waiting	35
		Three-Way Calling.....	35
		Miscellaneous	
Internal Phone Book		Menu Table	37
Internal Phone Book.....	18	Specification	37
Storing in Phonebook.....	18		
Searching for Entries in Phonebook.....	19		
Erasing An Entry in Phonebook.....	21		
Erasing All Entries in Phonebook.....	21		
One-Touch Dialing.....	22		
Two-Touch Dialing.....	22		
Useful Features			
Call History.....	24		
Displaying Your Phone Number.....	25		
Mute.....	25		

SAFETY PRECAUTIONS

1. Avoid placing the phone in a dusty location, or near a source of gas or fire.
2. Don't shake, hit or drop the phone.
3. To clean the exterior surface of the phone, use only a soft, dry cloth. The chemicals in alcohol, benzine or acetone can damage the surface of the phone.
4. Do not twist or pull the cord out of the phone.
5. Do not disassemble the phone.
6. DO NOT use the power adaptor if:
 - The power cord is damaged.
 - The phone has been dropped or damaged in any way.
7. Use only the AXESSTEL provided adaptor. Do not use the AXESSTEL adaptor for any other purpose.
8. Use only the AXESSTEL provided antenna. Do not use the antenna for any other purpose.
9. Frequency and length of use can affect the life of the self-charging battery. Contact your customer service if the battery is not operating properly.
10. Use only the designated self-charging battery. Dispose of exhausted batteries properly. Never discard a battery in or near fire or flame.
11. Do not use the telephone near water, for example, near a bathtub, sink, wet basement, or swimming pool.

NOTE: The input and output voltages are indicated on the adaptor.
(Input: AC 240V, 50~60 Hz, Output: DC 5V, 2A)

CHECKING THE PARTS

After unpacking your phone, make sure that you have all the parts shown below. If any piece is missing or broken, please call your customer service center.

- | | |
|-------------------------|------------------------|
| 1. Main Unit | 4. User Manual |
| 2. Handset | 5. Antenna |
| 3. Power Adaptor | 6. Handset Cord |

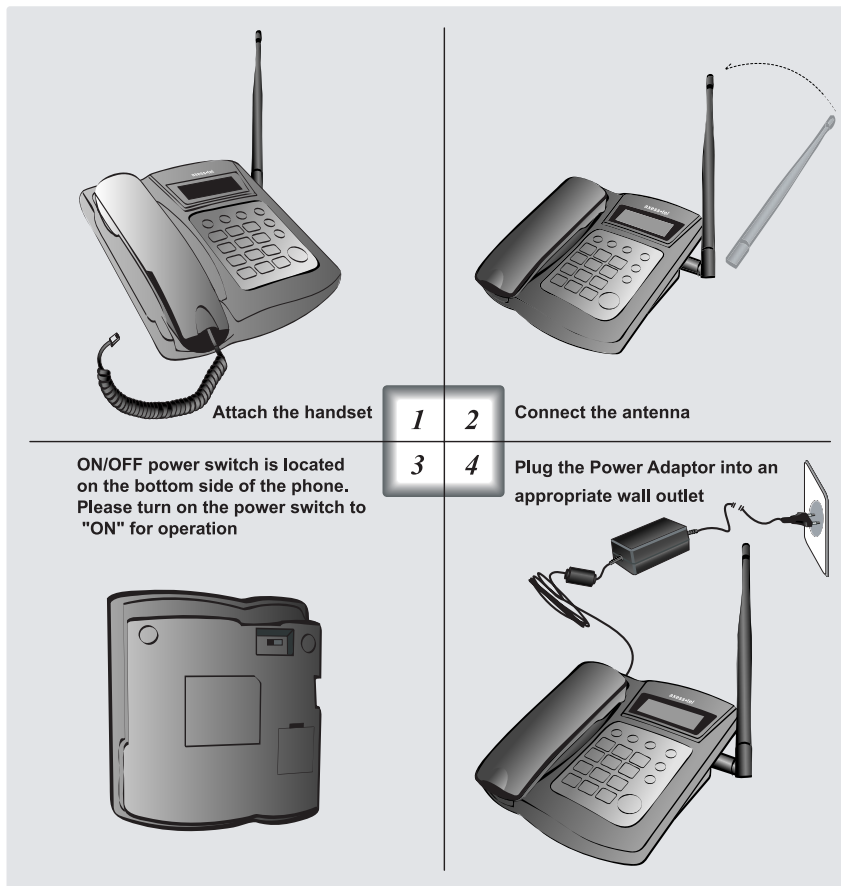


SETTING UP YOUR PHONE

Installing the phone

This phone operates by receiving DC power from the AXESSTEL power adaptor, which connects to an electrical outlet. The phone is equipped with a rechargeable battery as a back up in case of an AC power failure.

Desktop installation



SETTING UP YOUR PHONE

Service Status Check

Display in the Service Area

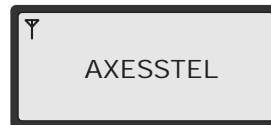
When the power cord is connected properly, all segments in the LCD window will turn on briefly and Power LED will light. The number of bars of signal strength indicator (antenna icon) indicates the strength of service signal of the area. The display will show the greeting With date and time.

You can change the greeting. (See page 31)

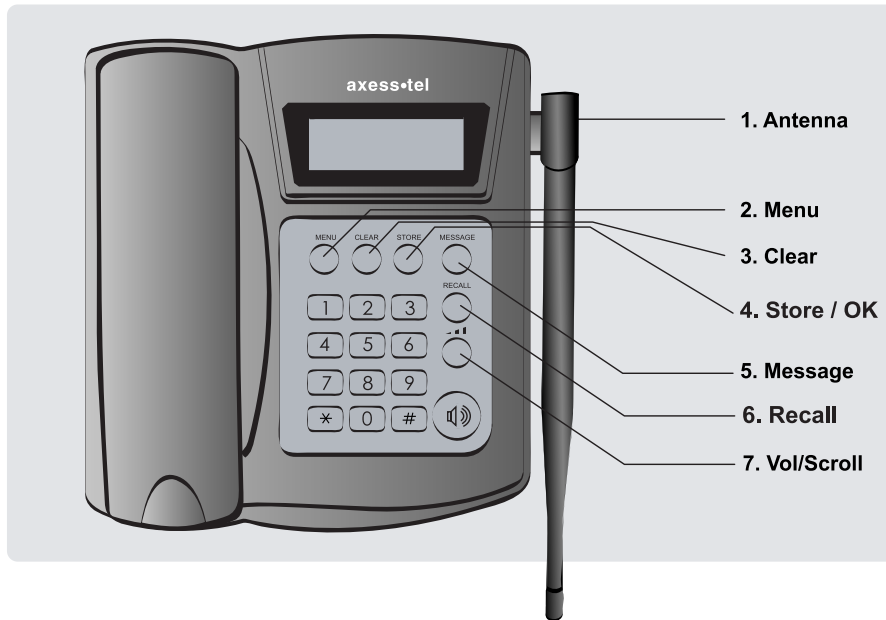
Display in area with no service

When there is no service signal detected in your area, no antenna bar appears. Contact your service provider for the coverage area information.

First, check if the antenna is connected firmly.



GETTING TO KNOW YOUR PHONE



1. Antenna: Adjusting the position of antenna improves the sound quality of the call.

2. Menu: Press to access the phone's menus.

3. Clear: Lets you clear your last entry.

4. Store : Stores phone numbers, and any settings you select in the menu within the phone's memory

5. Message: Press to retrieve messages.

6. Recall: Allows you to redial the last number called.

7. Vol/Scroll: Lets you adjust sound levels and scroll through the menu options and displays.

DISPLAY ICONS

Icons display on the screen to indicate what features you are using, signal strength and battery status etc...



Indicate the strength of the signal. More bars indicate stronger signal.



Indicates the level of battery power. The more bars, the more power. When the battery is low, the icon blinks, and an alert tone sounds.



Indicates that you are using the phone's menu.



Indicates that the alarm has been set.



Indicates that you are in the Phonebook menu.



Indicates that you have a text message or a voice mail message.



Indicates that a voice or data call is in progress.

FUNCTION KEYS



Press this key to display the phone's main menu.



Clears information from the display screen.
- To erase one character from the display screen, press it once.
- To erase all characters on the screen, press and hold.
- To go back one step in the menu mode, press it once.



Press this key to retrieve messages.



Press this key to store a phone number in the phone book and to save menu settings.



Press this key to redial the last number called or to connect a call right after dialing the number without waiting until the call is connected automatically.



Press this key to control the volume of keypad, earpiece and speaker. In the menu mode, use this key to scroll through the menu items.



The Hands-Free Dialing button is used to place a call without using the handset. Built-in speaker allows dialing without picking up the handset