

ATTACHMENT O – SAR TEST PLOTS

AXW-L1900

SAM II Phantom; Flat Section; Position: (90°,90°); Frequency: 1900 MHz

Probe: ET3DV6 - SN1798; ConvF(4.84,4.84,4.84); Crest factor: 1.0; Body 1900 MHz: $\sigma = 1.50 \text{ mho/m}$ $\epsilon_r = 51.7$ $\rho = 1.00 \text{ g/cm}^3$

Cube 5x5x7: SAR (1g): 1.09 mW/g, SAR (10g): 0.637 mW/g

Coarse: Dx = 20.0, Dy = 20.0, Dz = 10.0

Powerdrift: -0.02 dB

Comment :

FCC ID : PH7AXWL1900/ MODEL : AXW-L1900

Company : AXESSTEL INC.

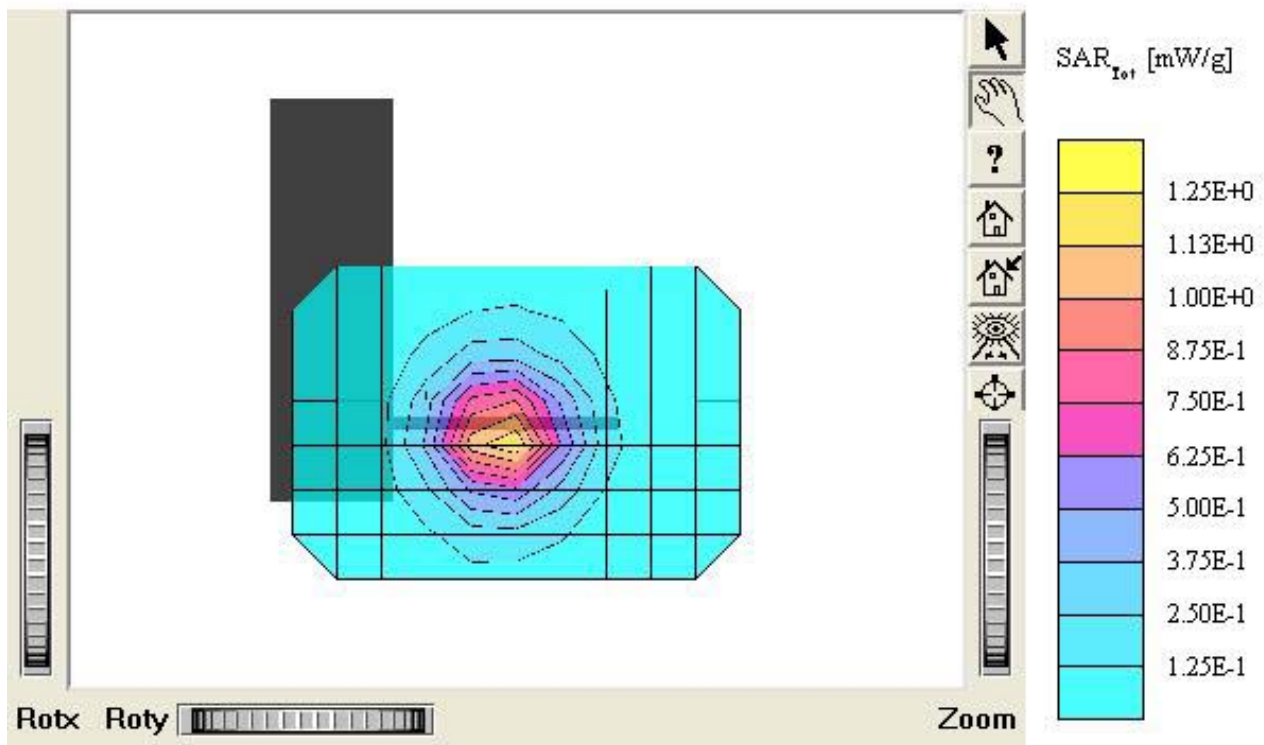
Test Position: Body / Antenna: Fixed

Mode: PCS CDMA / Channel: 25 (1851.25MHz)

Conducted Power: 24.5 dBm

Liquid Temperature: 22.6 °C

Date Tested : December 3, 2003



AXW-L1900

SAM II Phantom; Flat Section; Position: (90°,90°); Frequency: 1900 MHz

Probe: ET3DV6 - SN1798; ConvF(4.84,4.84,4.84); Crest factor: 1.0; Body 1900 MHz: $\sigma = 1.50 \text{ mho/m}$ $\epsilon_r = 51.7$ $\rho = 1.00 \text{ g/cm}^3$

Cube 5x5x7: SAR (1g): 1.15 mW/g, SAR (10g): 0.675 mW/g

Coarse: Dx = 20.0, Dy = 20.0, Dz = 10.0

Powerdrift: 0.12 dB

Comment :

FCC ID : PH7AXWL1900/ MODEL : AXW-L1900

Company : AXESSTEL INC.

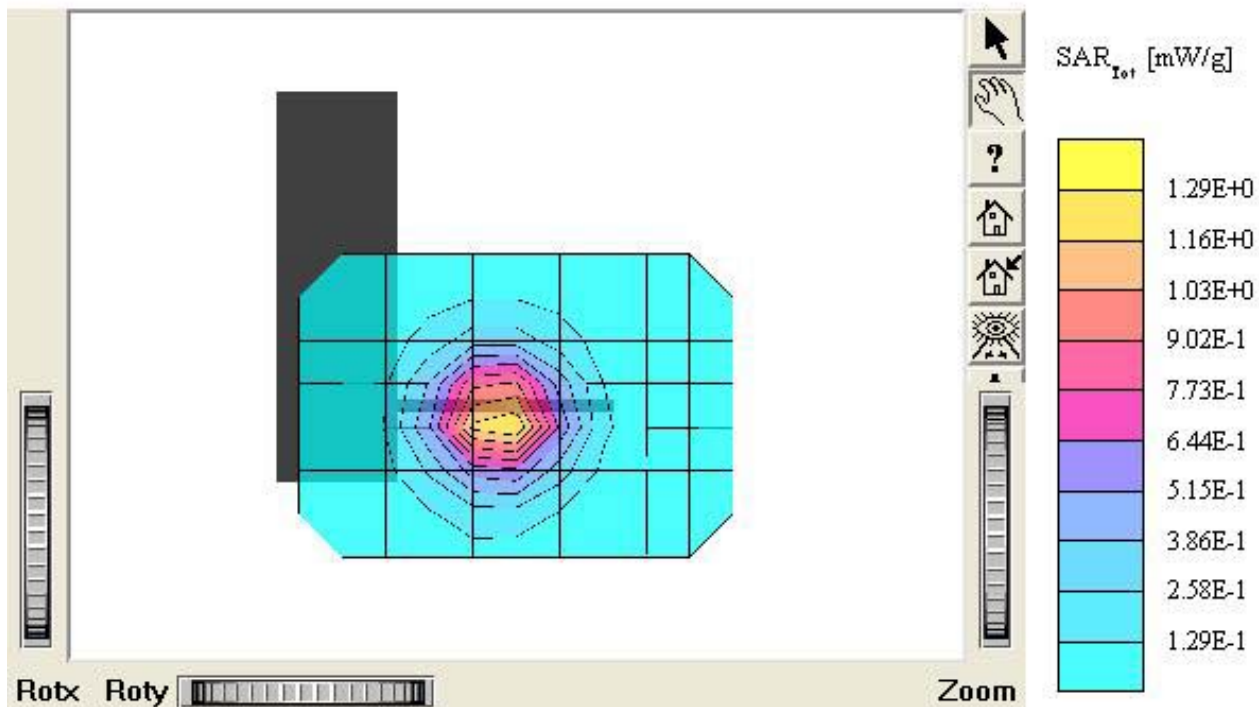
Test Position: Body / Antenna: Fixed

Mode: PCS CDMA / Channel: 600 (1880 MHz)

Conducted Power: 24.5 dBm

Liquid Temperature: 22.6 °C

Date Tested : December 3, 2003



AXW-L1900

SAM II Phantom; Flat Section; Position: (90°,90°); Frequency: 1900 MHz

Probe: ET3DV6 - SN1798; ConvF(4.84,4.84,4.84); Crest factor: 1.0; Body 1900 MHz: $\sigma = 1.50 \text{ mho/m}$ $\epsilon_r = 51.7 \rho = 1.00 \text{ g/cm}^3$

Cube 5x5x7; SAR (1g): 0.948 mW/g, SAR (10g): 0.553 mW/g

Coarse: Dx = 20.0, Dy = 20.0, Dz = 10.0

Powerdrift: -0.02 dB

Comment :

FCC ID : PH7AXWL1900/ MODEL : AXW-L1900

Company : AXESSTEL INC.

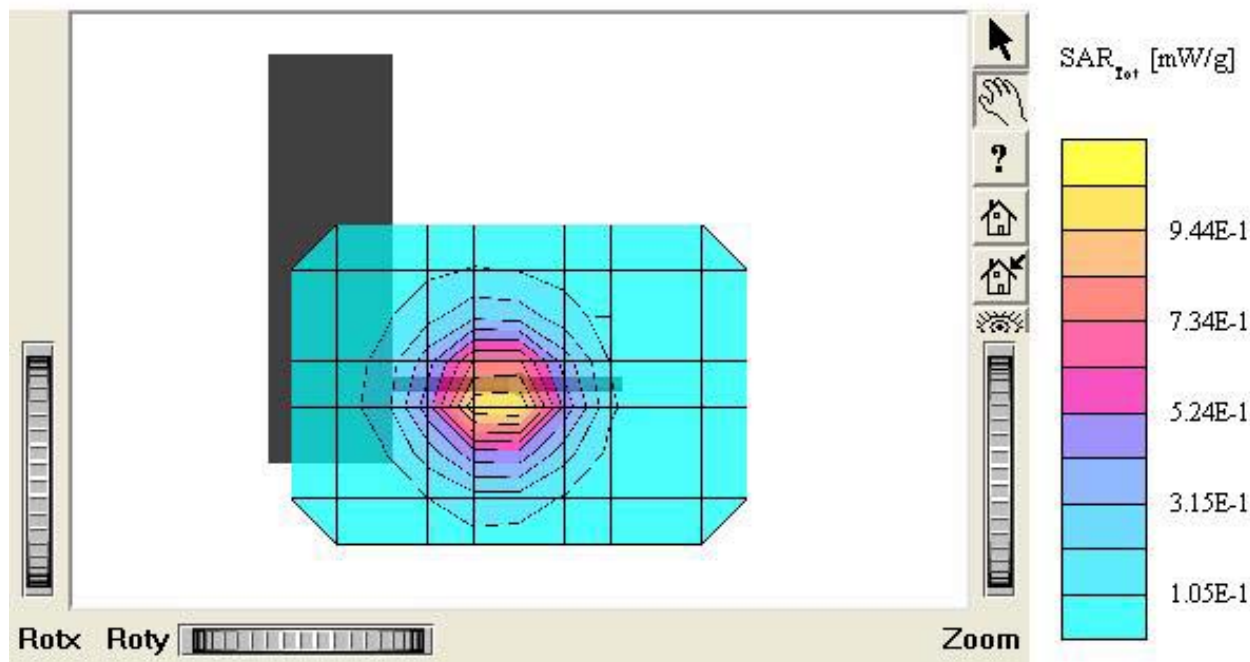
Test Position: Body / Antenna: Fixed

Mode: PCS CDMA / Channel: 1175 (1908.75 MHz)

Conducted Power: 24.5 dBm

Liquid Temperature: 22.6 °C

Date Tested : December 3, 2003



AXW-L1900

SAM II Phantom; Flat Section; Position: (90°,90°); Frequency: 1900 MHz

Probe: ET3DV6 - SN1798; ConvF(4.84,4.84,4.84); Crest factor: 1.0; Body 1900 MHz: $\sigma = 1.50 \text{ mho/m}$ $\epsilon_r = 51.7$ $\rho = 1.00 \text{ g/cm}^3$

Cube 5x5x7: SAR (1g): 1.10 mW/g, SAR (10g): 0.643 mW/g

Coarse: Dx = 20.0, Dy = 20.0, Dz = 10.0

Powerdrift: 0.00 dB

Comment :

FCC ID : PH7AXWL1900/ MODEL : AXW-L1900 (With Charger)

Company : AXESSTEL INC.

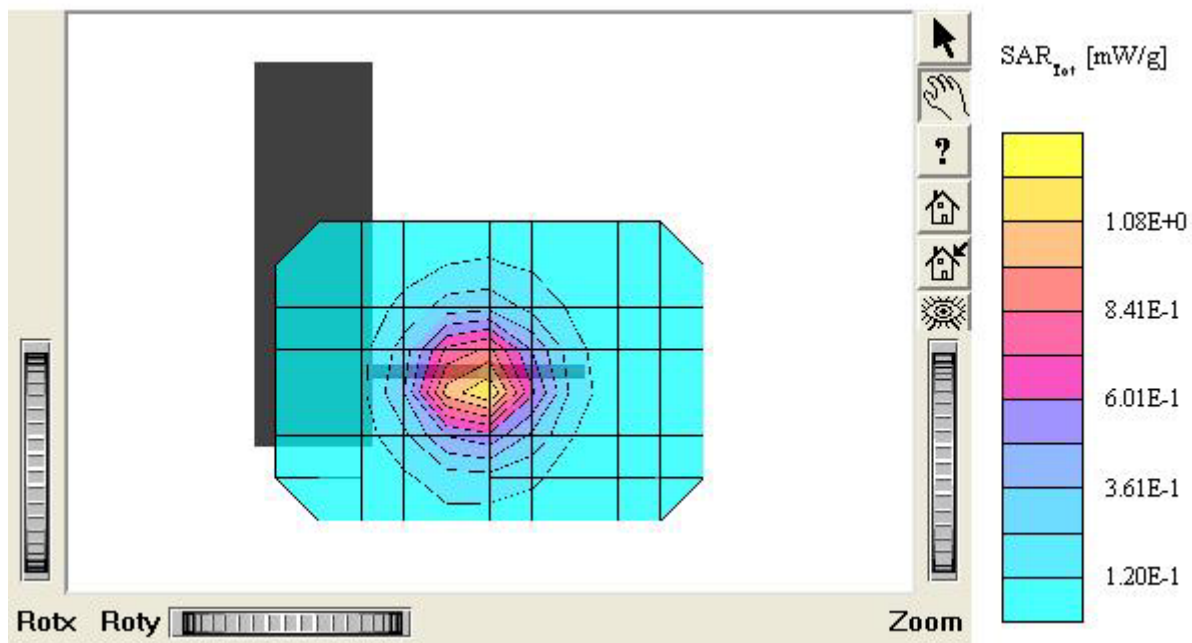
Test Position: Body / Antenna: Fixed

Mode: PCS CDMA / Channel: 25 (1851.25MHz)

Conducted Power: 24.5 dBm

Liquid Temperature: 22.6 °C

Date Tested : December 3, 2003



AXW-L1900

SAM II Phantom; Flat Section; Position: (90°,90°); Frequency: 1900 MHz

Probe: ET3DV6 - SN1798; ConvF(4.84,4.84,4.84); Crest factor: 1.0; Body 1900 MHz: $\sigma = 1.50 \text{ mho/m}$ $\epsilon_r = 51.7$ $\rho = 1.00 \text{ g/cm}^3$

Cube 5x5x7: SAR (1g): 1.16 mW/g, SAR (10g): 0.674 mW/g

Coarse: Dx = 20.0, Dy = 20.0, Dz = 10.0

Powerdrift: -0.03 dB

Comment :

FCC ID : PH7AXWL1900/ MODEL : AXW-L1900 (With Charger)

Company : AXESSTEL INC.

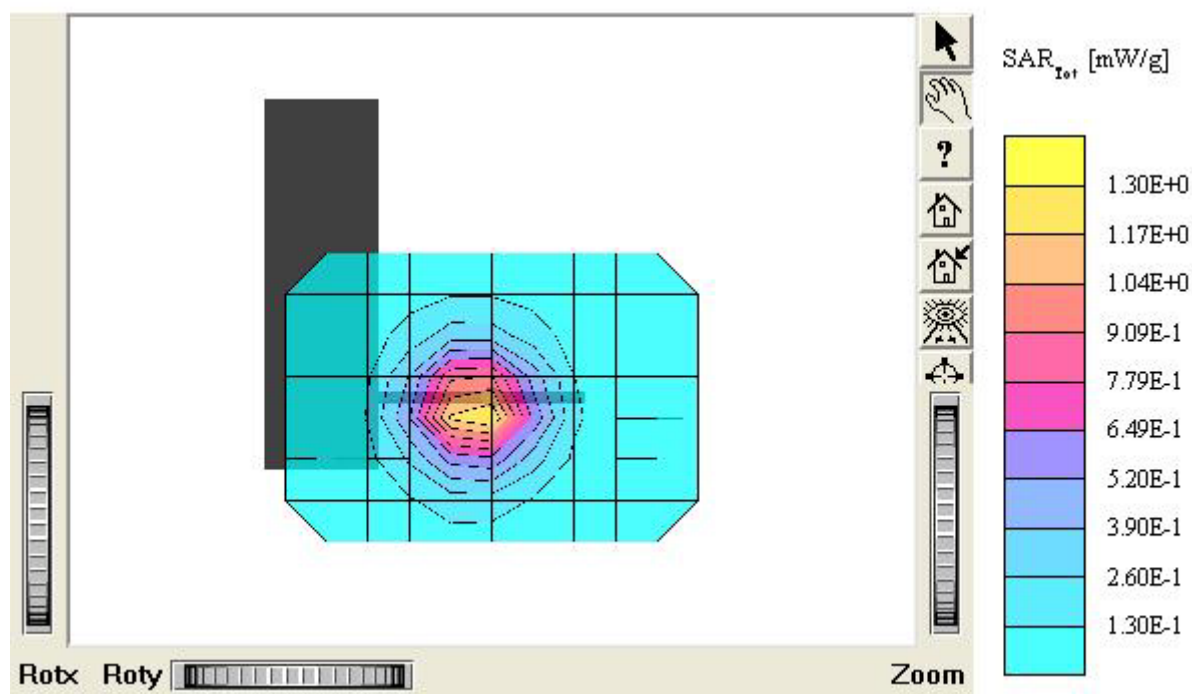
Test Position: Body / Antenna: Fixed

Mode: PCS CDMA / Channel: 600 (1880 MHz)

Conducted Power: 24.5 dBm

Liquid Temperature: 22.6 °C

Date Tested : December 3, 2003



AXW-L1900

SAM II Phantom; Flat Section; Position: (90°,90°); Frequency: 1900 MHz

Probe: ET3DV6 - SN1798; ConvF(4.84,4.84,4.84); Crest factor: 1.0; Body 1900 MHz: $\sigma = 1.50 \text{ mho/m}$ $\epsilon_r = 51.7$ $\rho = 1.00 \text{ g/cm}^3$

Cube 5x5x7: SAR (1g): 0.951 mW/g, SAR (10g): 0.552 mW/g

Coarse: Dx = 20.0, Dy = 20.0, Dz = 10.0

Powerdrift: 0.01 dB

Comment :

FCC ID : PH7AXWL1900/ MODEL : AXW-L1900 (With Charger)

Company : AXESSTEL INC.

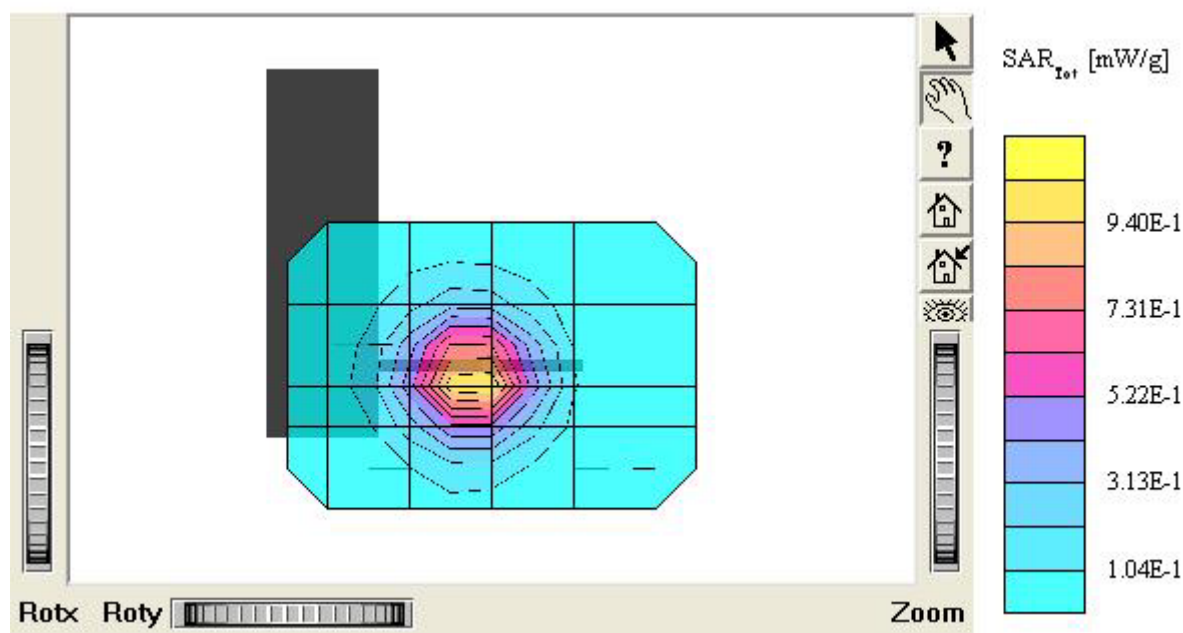
Test Position: Body / Antenna: Fixed

Mode: PCS CDMA / Channel: 1175 (1908.75 MHz)

Conducted Power: 24.5 dBm

Liquid Temperature: 22.6 °C

Date Tested : December 3, 2003



AXW-L1900

SAM II Phantom; Section; Position: ; Frequency: 1900 MHz

Probe: ET3DV6 - SN1798; ConvF(4.84,4.84,4.84); Crest factor: 1.0; Body 1900 MHz: $\sigma = 1.50 \text{ mho/m}$ $\epsilon_r = 51.7$ $\rho = 1.00 \text{ g/cm}^3$

:

Z-Axis: Dx = 0.0, Dy = 0.0, Dz = 5.0

Comment :

FCC ID : PH7AXWL1900/ MODEL : AXW-L1900 (With Charger)

Company : AXESSTEL INC.

Test Position: Body / Antenna: Fixed

Mode: PCS CDMA / Channel: 600 (1880 MHz)

Conducted Power: 24.5 dBm

Liquid Temperature: 22.6 °C

Date Tested : December 3, 2003

