

Peak SAR Location

Body SAR



File : c:/idx3/SYSTEM/SARMEAS3/data/Normal/01032914_ZOOM.VLT
Start : 29-Mar-101 04:08:42 pm End : 29-Mar-101 04:19:52 pm

Radio Type : AXESSTEL
Model Number : ACW-P800
Serial Number : 17
Frequency : 824.70 MHz
Peak Trans. Pwr : 0.320 W
Start Trans. Pwr : 0.320 W
Antenna Type : Helical
Antenna Posn. : Internal
Phantom Type : Body
Phantom Posn. : Abdomen
Scan Type : ZOOM/SAR
Probe Name : PCTEST
Field Type : E Field
Orientation : 0 Degrees

Mixture Type = Muscle
Mixture Dielectric Constant = 51.700
Mixture Conductivity = 1.100

Comment :
AXESSTEL WLL CDMA MODE PHONE
CHAN 1013 Conducted 25.0 dBm
AXESSTEL WLL CDMA MODE PHONE

Robot : PCTEST

Probe Offset = 0.25 cm
Sensor Factor = 0.0108
Conversion Factor = 0.894

PCTEST Amplifier Channel Settings : 0.166 0.135 0.132

Max Location : X = 0.250, Y = -2.000, Z = 0.000 (cm) Value = 18.773

Measured Values (volts) =
1.755E-002 1.444E-002 1.171E-002 9.578E-003 7.843E-003 6.588E-003
5.607E-003 5.080E-003 4.803E-003 4.779E-003 4.499E-003 4.056E-003
3.489E-003 2.747E-003 1.925E-003 1.232E-003 7.986E-004 7.335E-004
9.654E-004 1.324E-003 1.713E-003

Calc. Voltage @ Surface (Vs) = 0.0215

Voltage @ 1.00 cm (Vt) = 0.0096

Ave. Voltage (Vs+Vt)/2 = 0.0155

Ave. SAR over 1 g (mW/g) = 1.2856

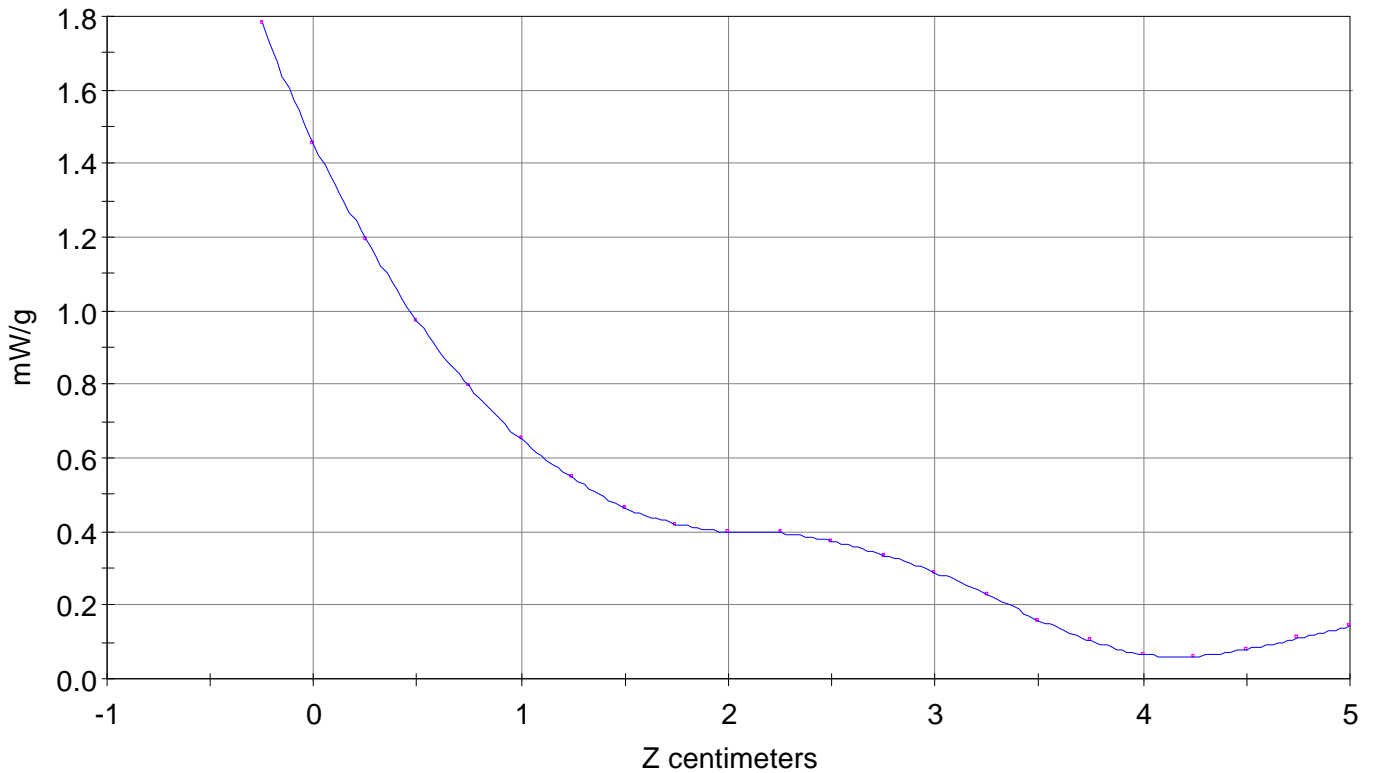
SAR Scan

File : 01032914_ZOOM

Start : 29-Mar-101 04:08:42 pm End : 29-Mar-101 04:19:52 pm

AXESSTEL/ACW-P800/17;824.70MHz;W;Helical/Internal;

Body/Abdomen;ZOOM/SAR;PCTEST/E Field/0 DegreesMuscle/51.700/1.100

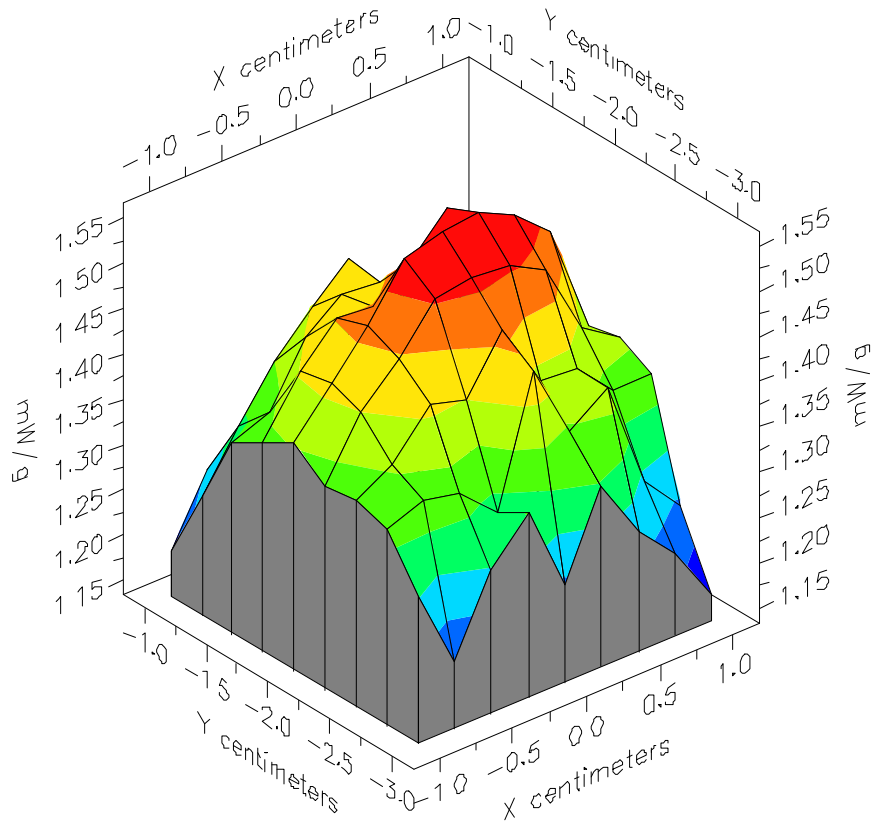


File : 01032914_ZOOM

Start : 29-Mar-101 04:08:42 pm End : 29-Mar-101 04:19:52 pm

AXESSTEL/ACW-P800/17;824.70MHz;W;Helical/Internal;

Body/Abdomen;ZOOM/SAR;PCTEST/E Field/0 DegreesMuscle/51.700/1.100

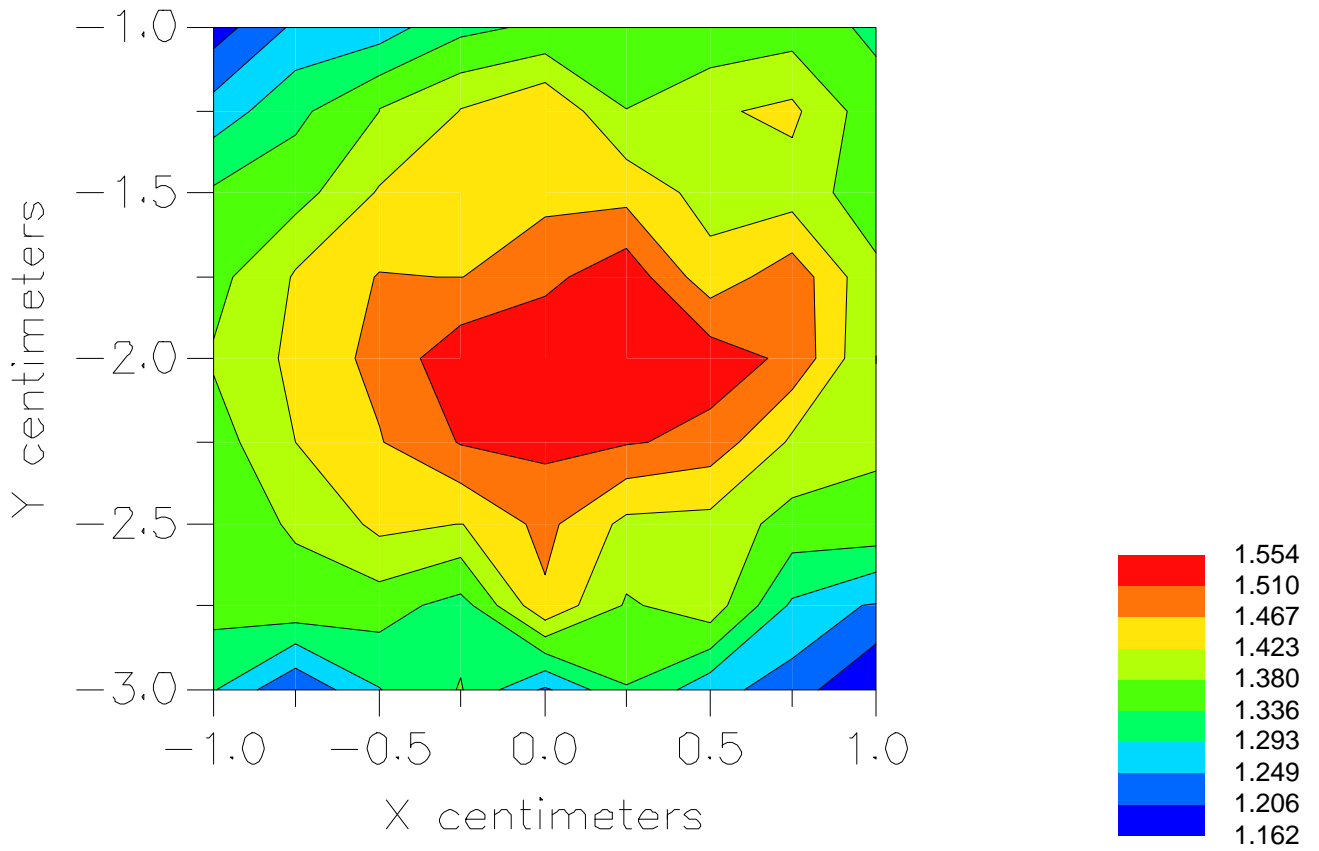


File : 01032914_ZOOM

Start : 29-Mar-101 04:08:42 pm End : 29-Mar-101 04:19:52 pm

AXESSTEL/ACW-P800/17;824.70MHz;W;Helical/Internal;

Body/Abdomen;ZOOM/SAR;PCTEST/E Field/0 DegreesMuscle/51.700/1.100



File : c:/idx3/SYSTEM/SARMEAS3/data/Normal/01032919_ZOOM.VLT
Start : 29-Mar-101 04:46:47 pm End : 29-Mar-101 04:57:58 pm

Radio Type : AXESSTEL
Model Number : ACW-P800
Serial Number : 17
Frequency : 835.89 MHz
Peak Trans. Pwr : 0.320 W
Start Trans. Pwr : 0.320 W
Antenna Type : Helical
Antenna Posn. : Internal
Phantom Type : Body
Phantom Posn. : Abdomen
Scan Type : ZOOM/SAR
Probe Name : PCTEST
Field Type : E Field
Orientation : 0 Degrees

Mixture Type = Muscle
Mixture Dielectric Constant = 51.700
Mixture Conductivity = 1.100

Comment :
AXESSTEL WLL CDMA MODE PHONE
CHAN 0363 Conducted 25.0 dBm
AXESSTEL WLL CDMA MODE PHONE

Robot : PCTEST

Probe Offset = 0.25 cm
Sensor Factor = 0.0108
Conversion Factor = 0.894

PCTEST Amplifier Channel Settings : 0.166 0.135 0.132

Max Location : X = 0.000, Y = -2.000, Z = 0.000 (cm) Value = 15.084

Measured Values (volts) =
1.482E-002 1.209E-002 9.734E-003 8.027E-003 6.570E-003 5.332E-003
4.655E-003 4.231E-003 4.051E-003 3.893E-003 3.741E-003 3.388E-003
2.880E-003 2.174E-003 1.513E-003 9.468E-004 6.903E-004 6.845E-004
8.776E-004 1.175E-003 1.435E-003

Calc. Voltage @ Surface (Vs) = 0.0183

Voltage @ 1.00 cm (Vt) = 0.0080

Ave. Voltage (Vs+Vt)/2 = 0.0132

Ave. SAR over 1 g (mW/g) = 1.0891

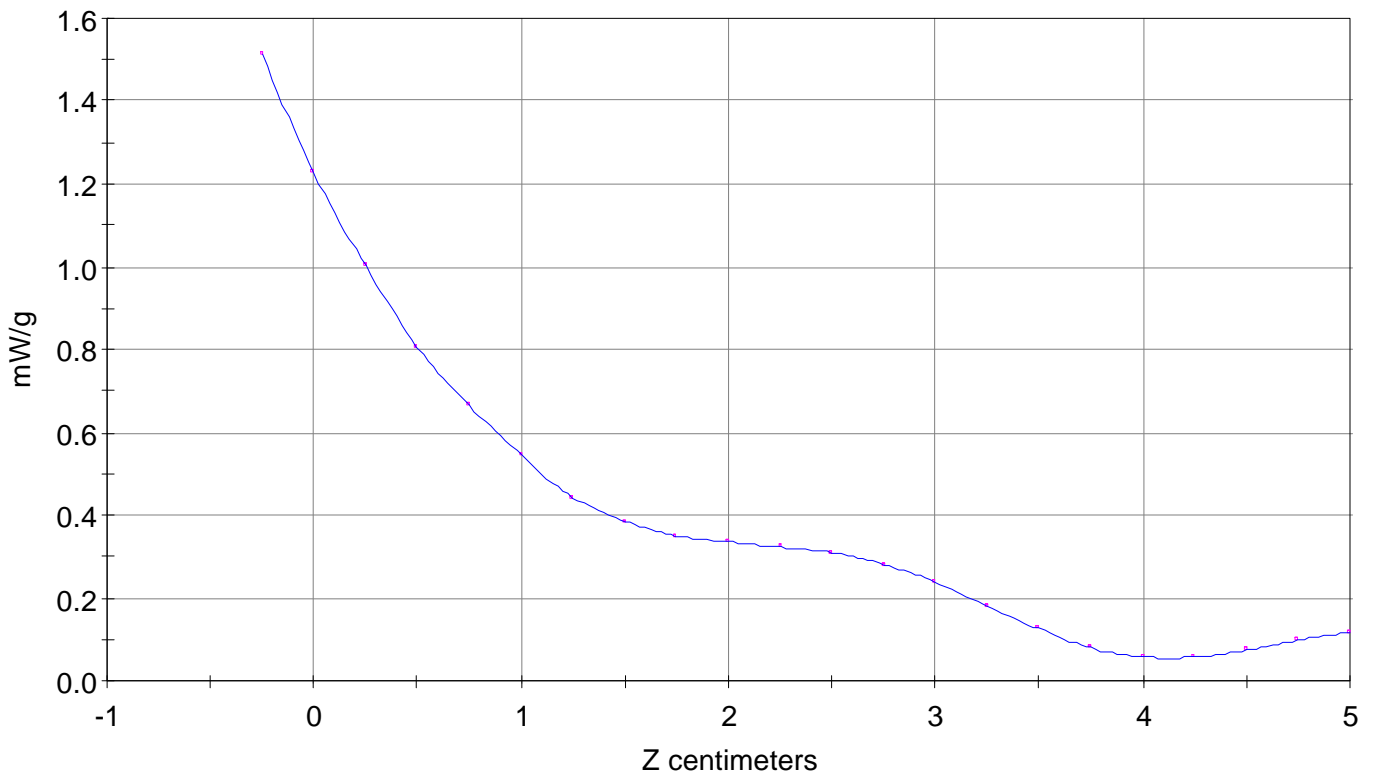
SAR Scan

File : 01032919_ZOOM

Start : 29-Mar-101 04:46:47 pm End : 29-Mar-101 04:57:58 pm

AXESSTEL/ACW-P800/17;835.89MHz;W;Helical/Internal;

Body/Abdomen;ZOOM/SAR;PCTEST/E Field/0 DegreesMuscle/51.700/1.100

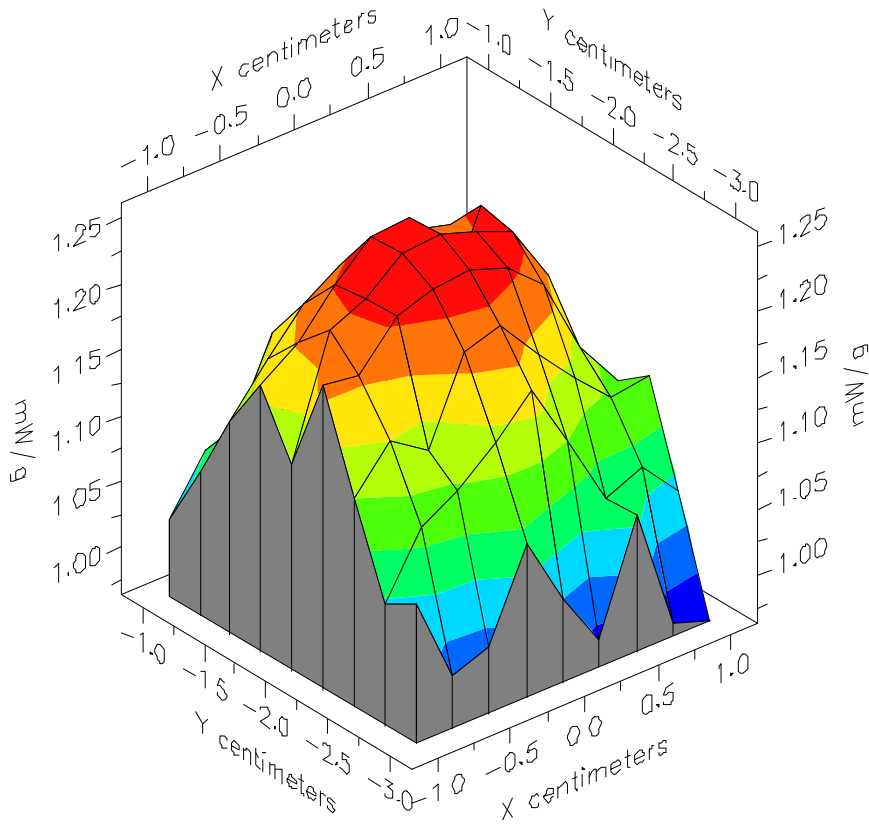


File : 01032919_ZOOM

Start : 29-Mar-101 04:46:47 pm End : 29-Mar-101 04:57:58 pm

AXESSTEL/ACW-P800/17;835.89MHz;W;Helical/Internal;

Body/Abdomen;ZOOM/SAR;PCTEST/E Field/0 DegreesMuscle/51.700/1.100

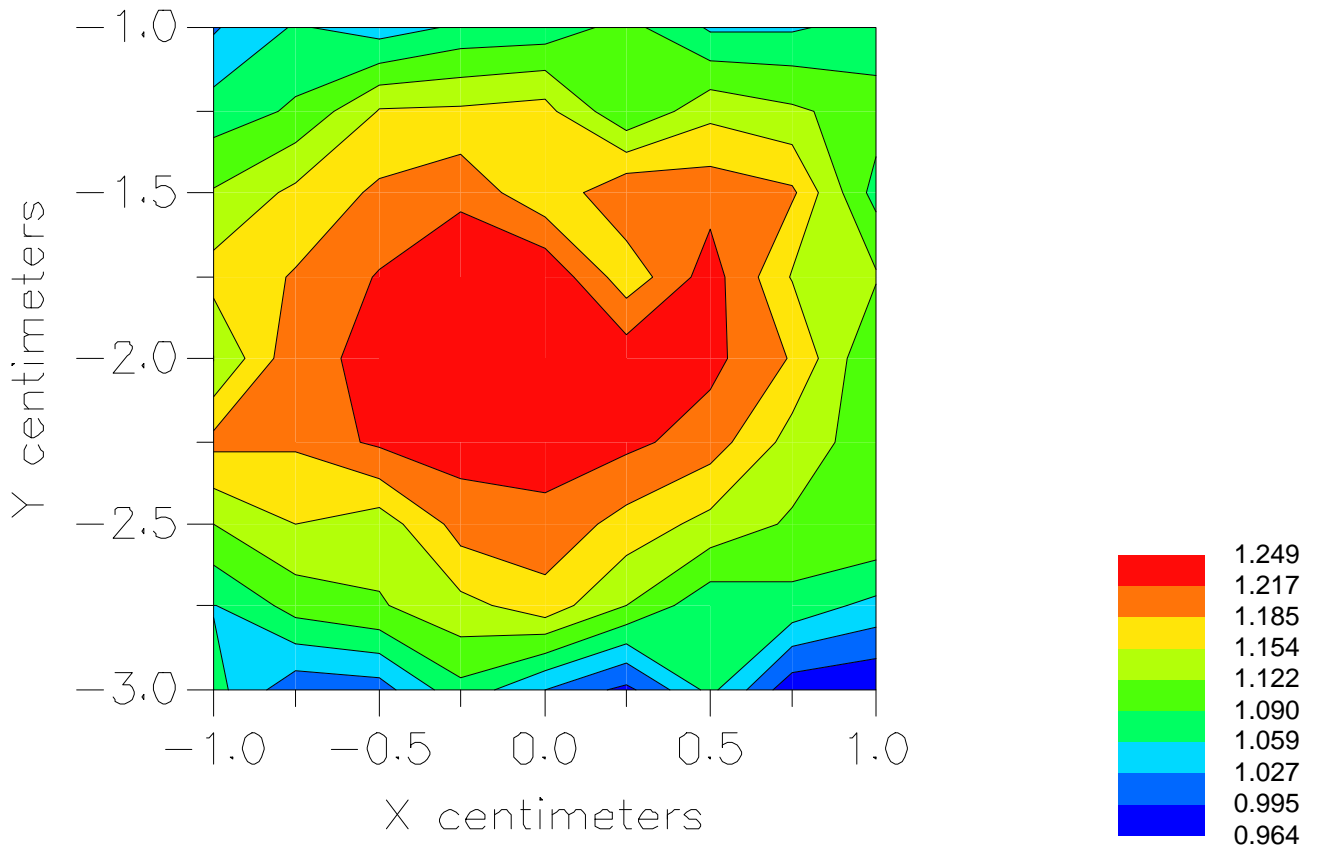


File : 01032919_ZOOM

Start : 29-Mar-101 04:46:47 pm End : 29-Mar-101 04:57:58 pm

AXESSTEL/ACW-P800/17;835.89MHz;W;Helical/Internal;

Body/Abdomen;ZOOM/SAR;PCTEST/E Field/0 DegreesMuscle/51.700/1.100



File : c:/idx3/SYSTEM/SARMEAS3/data/Normal/01032909_ZOOM.VLT
Start : 29-Mar-101 03:30:37 pm End : 29-Mar-101 03:41:49 pm

Radio Type : AXESSTEL
Model Number : ACW-P800
Serial Number : 17
Frequency : 848.31 MHz
Peak Trans. Pwr : 0.320 W
Start Trans. Pwr : 0.320 W
Antenna Type : Helical
Antenna Posn. : Internal
Phantom Type : Body
Phantom Posn. : Abdomen
Scan Type : ZOOM/SAR
Probe Name : PCTEST
Field Type : E Field
Orientation : 0 Degrees

Mixture Type = Muscle
Mixture Dielectric Constant = 51.700
Mixture Conductivity = 1.100

Comment :
AXESSTEL WLL CDMA MODE PHONE
CHAN 0777 Conducted 25.0 dBm
AXESSTEL WLL CDMA MODE PHONE

Robot : PCTEST

Probe Offset = 0.25 cm
Sensor Factor = 0.0108
Conversion Factor = 0.894

PCTEST Amplifier Channel Settings : 0.166 0.135 0.132

Max Location : X = 0.250, Y = -1.750, Z = 0.000 (cm) Value = 20.376

Measured Values (volts) =
1.965E-002 1.707E-002 1.437E-002 1.181E-002 9.529E-003 7.745E-003
6.399E-003 5.707E-003 5.302E-003 5.089E-003 4.979E-003 4.713E-003
4.227E-003 3.458E-003 2.573E-003 1.753E-003 1.184E-003 8.254E-004
8.207E-004 1.103E-003 1.569E-003

Calc. Voltage @ Surface (Vs) = 0.0230

Voltage @ 1.00 cm (Vt) = 0.0118

Ave. Voltage (Vs+Vt)/2 = 0.0174

Ave. SAR over 1 g (mW/g) = 1.4399

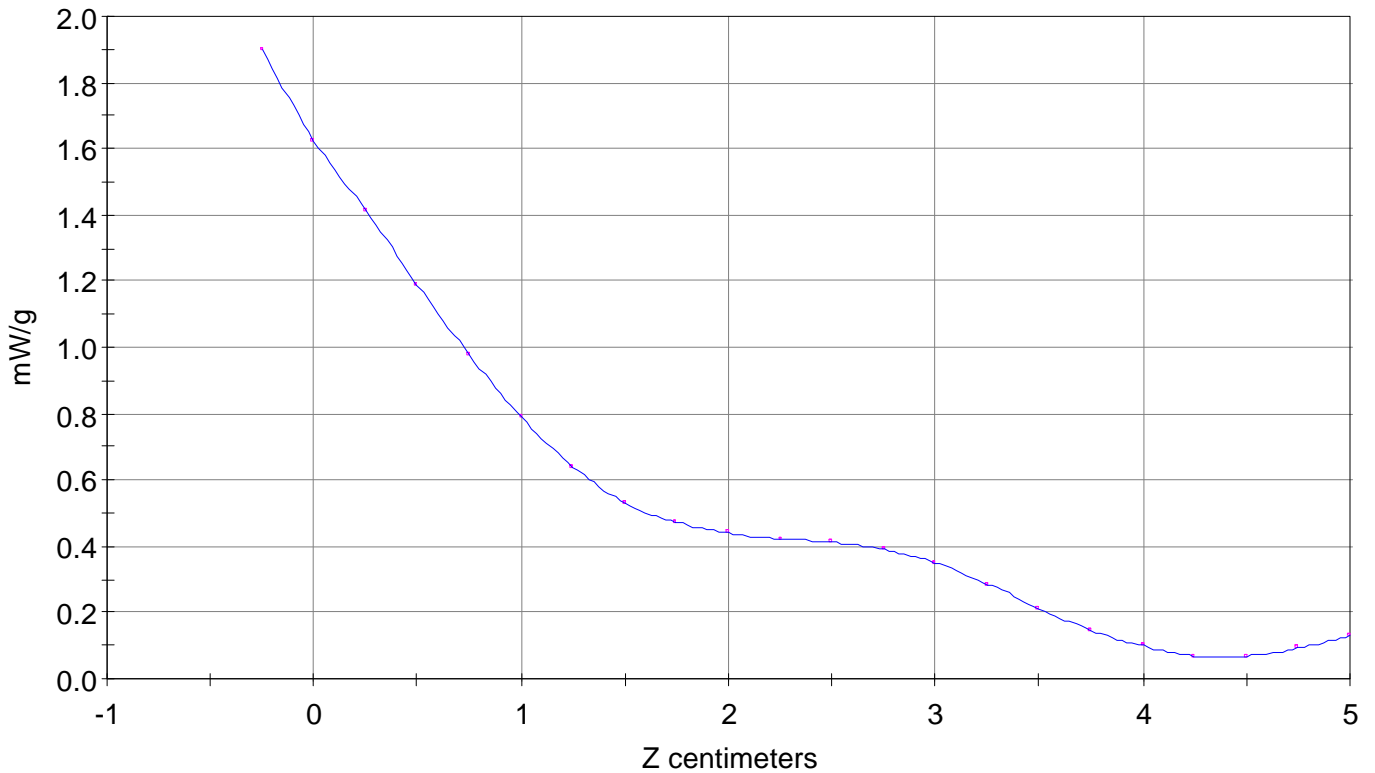
SAR Scan

File : 01032909_ZOOM

Start : 29-Mar-101 03:30:37 pm End : 29-Mar-101 03:41:49 pm

AXESSTEL/ACW-P800/17;848.31MHz;W;Helical/Internal;

Body/Abdomen;ZOOM/SAR;PCTEST/E Field/0 DegreesMuscle/51.700/1.100

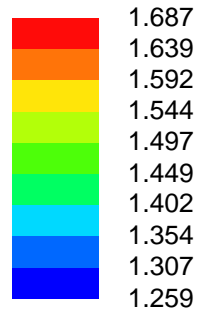
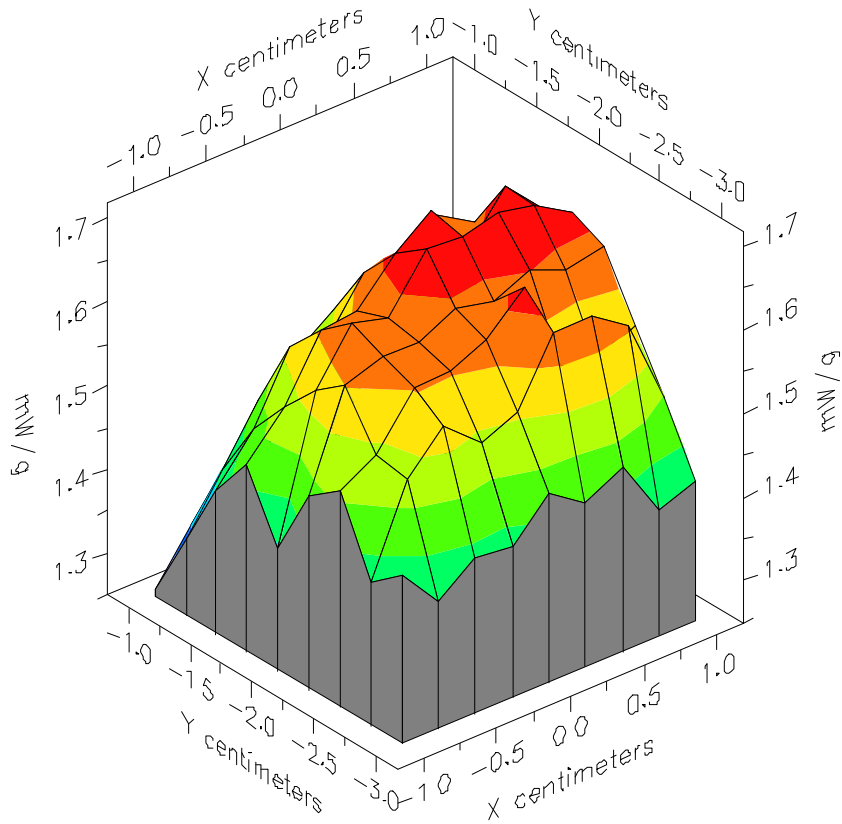


File : 01032909_ZOOM

Start : 29-Mar-101 03:30:37 pm End : 29-Mar-101 03:41:49 pm

AXESSTEL/ACW-P800/17;848.31MHz;W;Helical/Internal;

Body/Abdomen;ZOOM/SAR;PCTEST/E Field/0 DegreesMuscle/51.700/1.100



File : 01032909_ZOOM

Start : 29-Mar-101 03:30:37 pm End : 29-Mar-101 03:41:49 pm

AXESSTEL/ACW-P800/17;848.31MHz;W;Helical/Internal;

Body/Abdomen;ZOOM/SAR;PCTEST/E Field/0 DegreesMuscle/51.700/1.100

