

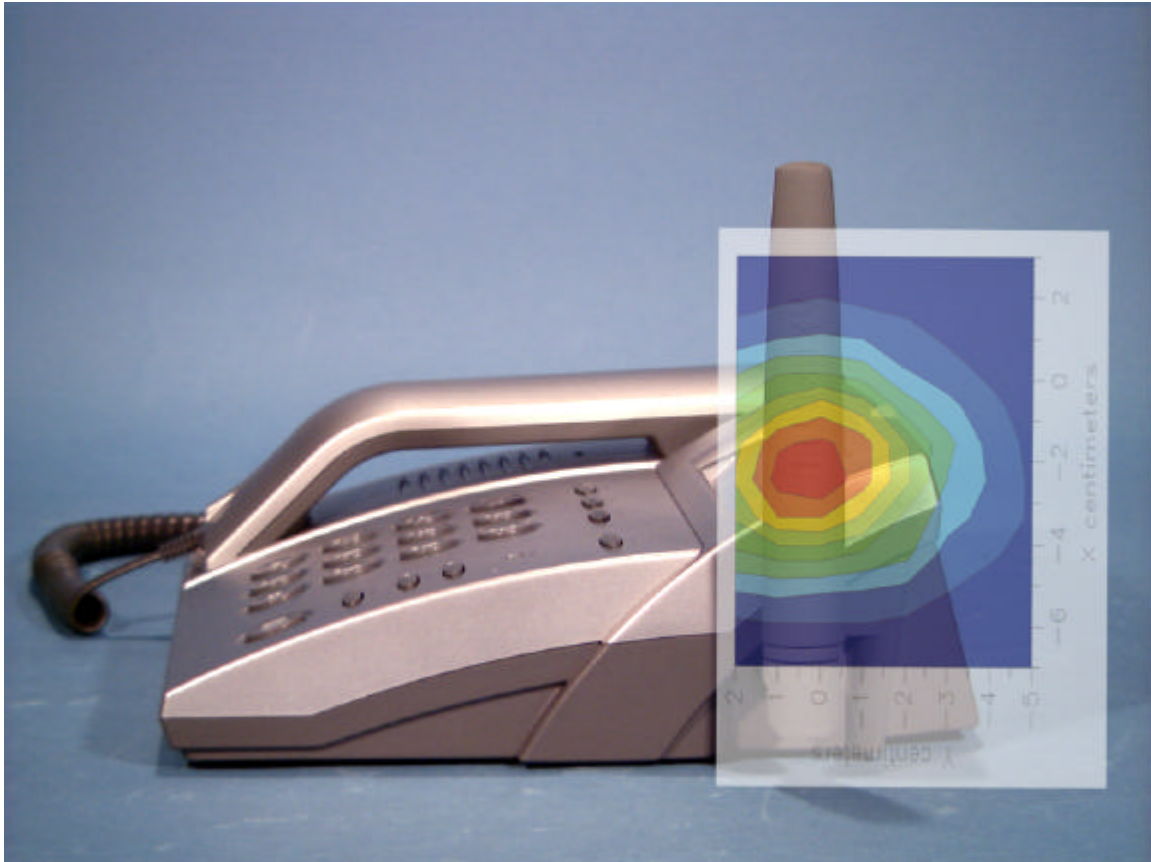
## **ATTACHMENT O – SAR TEST DATA**

---

# Peak SAR Location

---

## Body SAR



File : c:/idx3/SYSTEM/SARMEAS3/data/Normal/01032906\_ZOOM.VLT  
Start : 29-Mar-101 12:38:44 pm End : 29-Mar-101 12:46:02 pm

Radio Type : AXESSTEL  
Model Number : ACW-P1900  
Serial Number : 4  
Frequency : 1851.25 MHz  
Peak Trans. Pwr : 0.320 W  
Start Trans. Pwr : 0.320 W  
Antenna Type : Helical  
Antenna Posn. : Internal  
Phantom Type : Body  
Phantom Posn. : Abdomen  
Scan Type : ZOOM/SAR  
Probe Name : PCTEST  
Field Type : E Field  
Orientation : 0 Degrees

Mixture Type = Muscle  
Mixture Dielectric Constant = 54.200  
Mixture Conductivity = 1.850

Comment :  
AXESSTEL WLL PCS MODE PHONE  
CHAN 0025 Conducted 25.0 dBm  
AXESSTEL WLL PCS MODE PHONE

Robot : PCTEST

Probe Offset = 0.25 cm  
Sensor Factor = 0.0108  
Conversion Factor = 1.378

PCTEST Amplifier Channel Settings : 0.245 0.231 0.224

Max Location : X = -2.000, Y = -0.500, Z = 0.000 (cm) Value = 13.119

Measured Values (volts) =  
1.235E-002 8.507E-003 6.152E-003 4.456E-003 3.345E-003 2.595E-003  
1.931E-003 1.529E-003 1.113E-003 7.446E-004 6.362E-004 4.843E-004  
4.002E-004 3.463E-004 1.982E-004 1.243E-004 1.465E-004 1.831E-004  
1.974E-004 7.314E-005 7.873E-005

Calc. Voltage @ Surface (Vs) = 0.0175

Voltage @ 1.00 cm (Vt) = 0.0045

Ave. Voltage (Vs+Vt)/2 = 0.0110

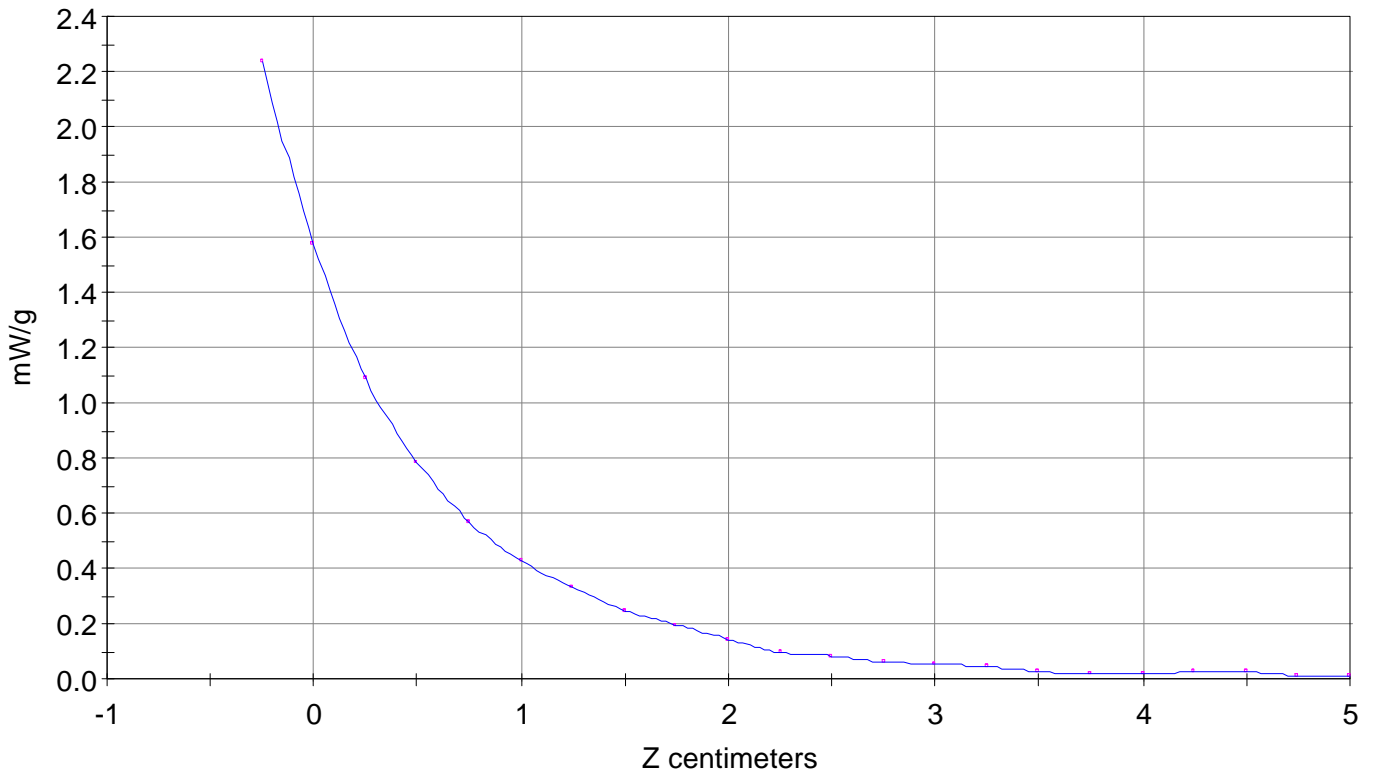
Ave. SAR over 1 g (mW/g) = 1.4004

### SAR Scan

File : 01032906\_ZOOM

Start : 29-Mar-101 12:38:44 pm End : 29-Mar-101 12:46:02 pm

AXESSTEL/ACW-P1900/4;1851.25MHz;W;Helical/Internal;  
Body/Abdomen;ZOOM/SAR;PCTEST/E Field/0 DegreesMuscle/54.200/1.850

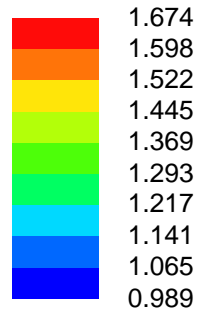
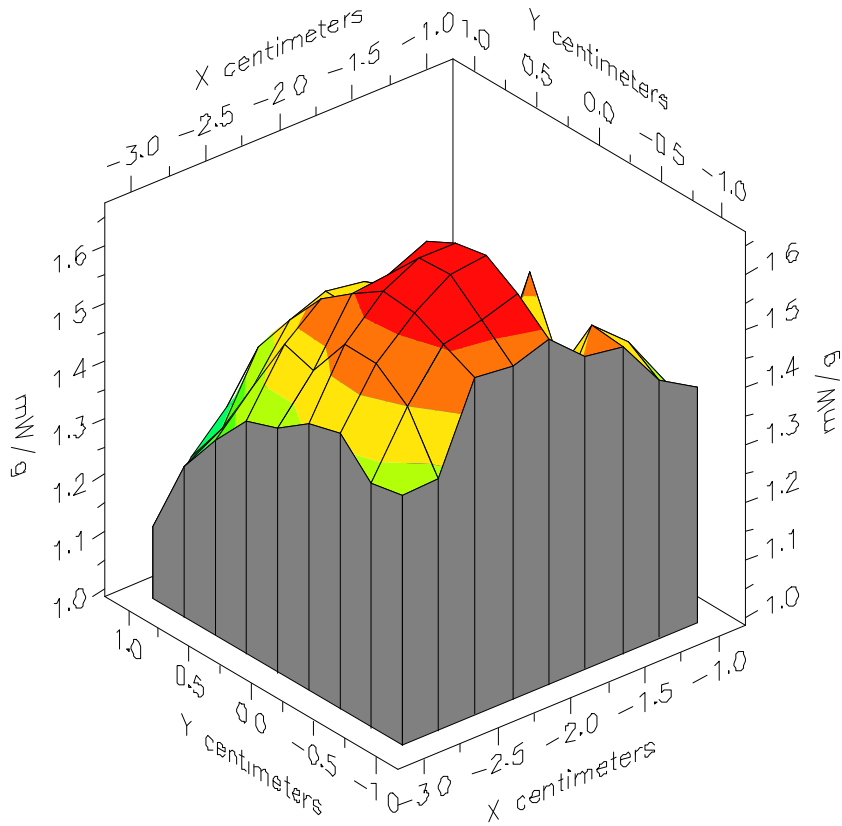


File : 01032906\_ZOOM

Start : 29-Mar-101 12:38:44 pm End : 29-Mar-101 12:46:02 pm

AXESSTEL/ACW-P1900/4;1851.25MHz;W;Helical/Internal;

Body/Abdomen;ZOOM/SAR;PCTEST/E Field/0 DegreesMuscle/54.200/1.850

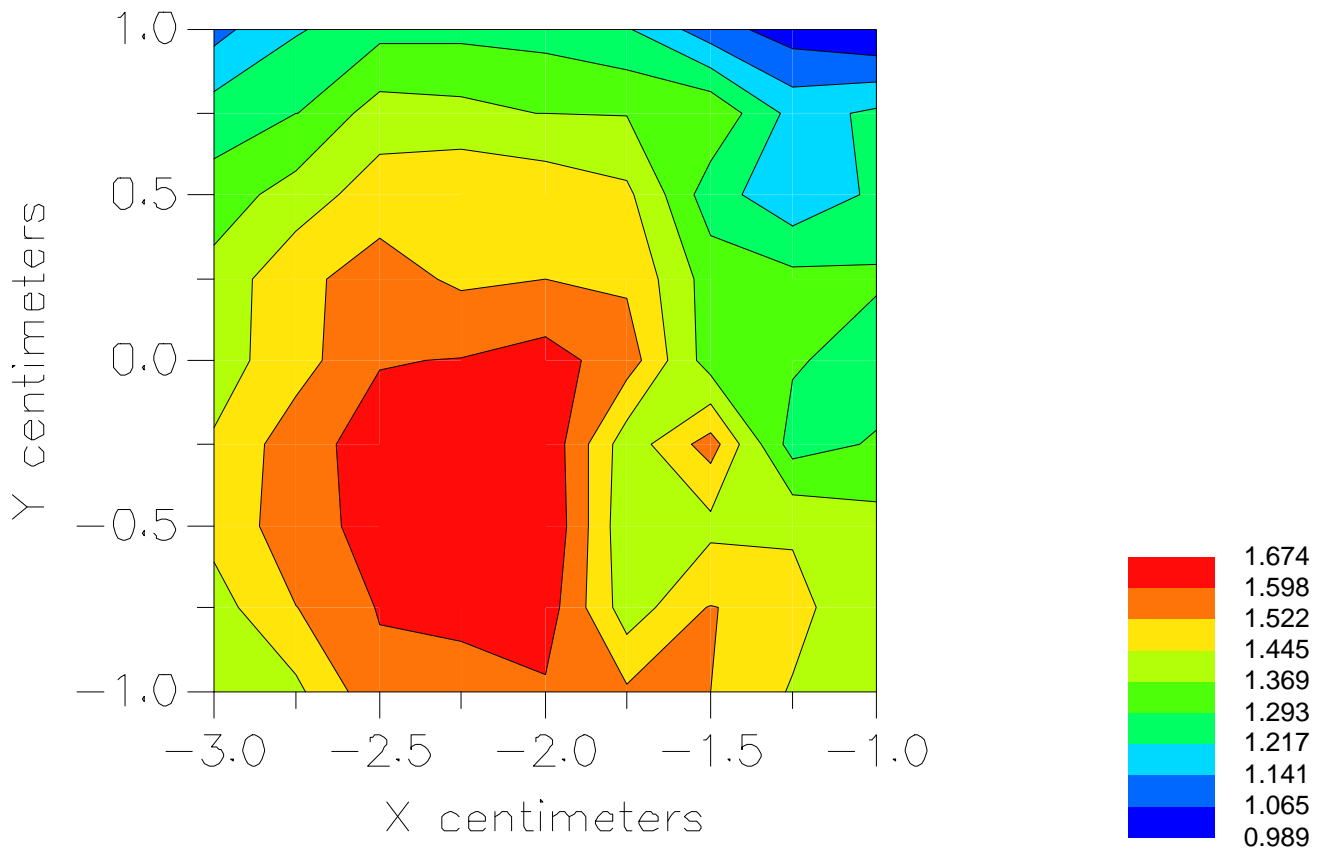


File : 01032906\_ZOOM

Start : 29-Mar-101 12:38:44 pm End : 29-Mar-101 12:46:02 pm

AXESSTEL/ACW-P1900/4;1851.25MHz;W;Helical/Internal;

Body/Abdomen;ZOOM/SAR;PCTEST/E Field/0 DegreesMuscle/54.200/1.850



File : c:/idx3/SYSTEM/SARMEAS3/data/Normal/01032908\_ZOOM.VLT  
Start : 29-Mar-101 02:10:01 pm End : 29-Mar-101 02:20:40 pm

Radio Type : AXESSTEL  
Model Number : ACW-P1900  
Serial Number : 4  
Frequency : 1880.00 MHz  
Peak Trans. Pwr : 0.320 W  
Start Trans. Pwr : 0.320 W  
Antenna Type : Helical  
Antenna Posn. : Internal  
Phantom Type : Body  
Phantom Posn. : Abdomen  
Scan Type : ZOOM/SAR  
Probe Name : PCTEST  
Field Type : E Field  
Orientation : 0 Degrees

Mixture Type = Muscle  
Mixture Dielectric Constant = 54.200  
Mixture Conductivity = 1.850

Comment :  
AXESSTEL WLL PCS MODE PHONE  
CHAN 0600 Conducted 25.0 dBm  
AXESSTEL WLL PCS MODE PHONE

Robot : PCTEST

Probe Offset = 0.25 cm  
Sensor Factor = 0.0108  
Conversion Factor = 1.378

PCTEST Amplifier Channel Settings : 0.245 0.231 0.224

Max Location : X = -3.500, Y = -0.750, Z = 0.000 (cm) Value = 10.604

Measured Values (volts) =  
9.931E-003 6.834E-003 4.537E-003 3.421E-003 2.512E-003 1.987E-003  
1.455E-003 1.076E-003 6.998E-004 6.214E-004 5.393E-004 4.301E-004  
2.762E-004 1.633E-004 1.530E-004 2.488E-004 2.634E-004 1.618E-004  
1.443E-005 3.689E-005 4.512E-006

Calc. Voltage @ Surface (Vs) = 0.0147

Voltage @ 1.00 cm (Vt) = 0.0034

Ave. Voltage (Vs+Vt)/2 = 0.0091

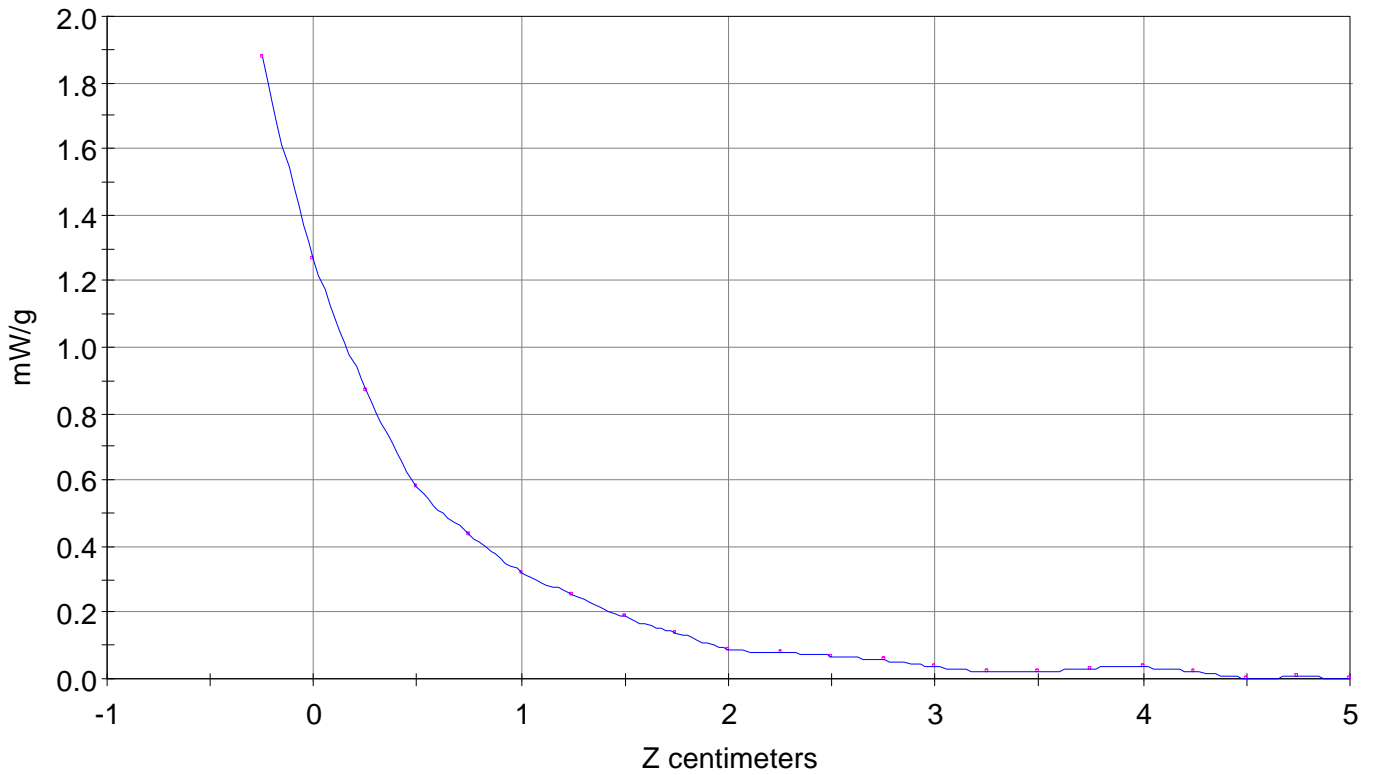
Ave. SAR over 1 g (mW/g) = 1.1557

# SAR Scan

File : 01032908\_ZOOM

Start : 29-Mar-101 02:10:01 pm End : 29-Mar-101 02:20:40 pm

AXESSTEL/ACW-P1900/4;1880.00MHz;W;Helical/Internal;  
Body/Abdomen;ZOOM/SAR;PCTEST/E Field/0 DegreesMuscle/54.200/1.850



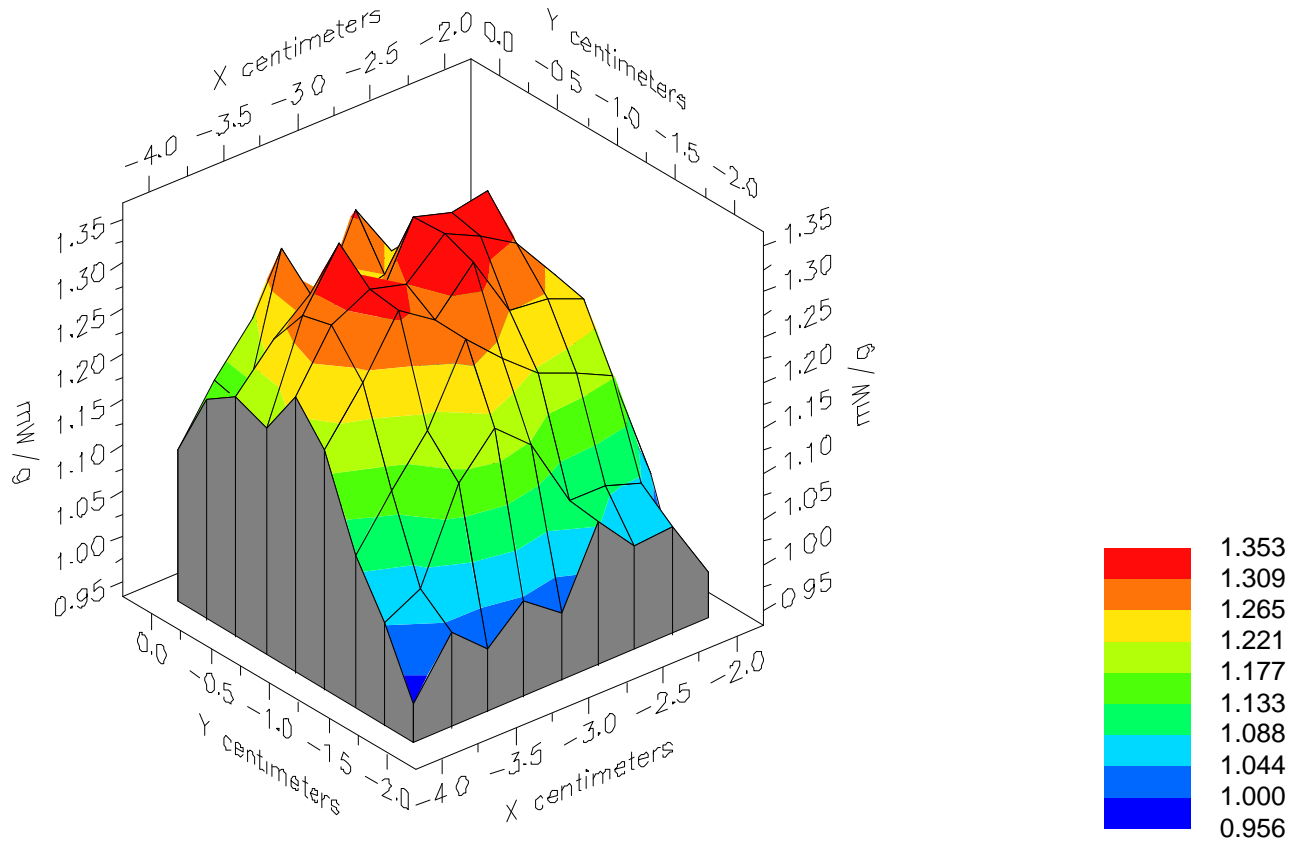


File : 01032908\_ZOOM

Start : 29-Mar-101 02:10:01 pm End : 29-Mar-101 02:20:40 pm

AXESSTEL/ACW-P1900/4;1880.00MHz;W;Helical/Internal;

Body/Abdomen;ZOOM/SAR;PCTEST/E Field/0 DegreesMuscle/54.200/1.850

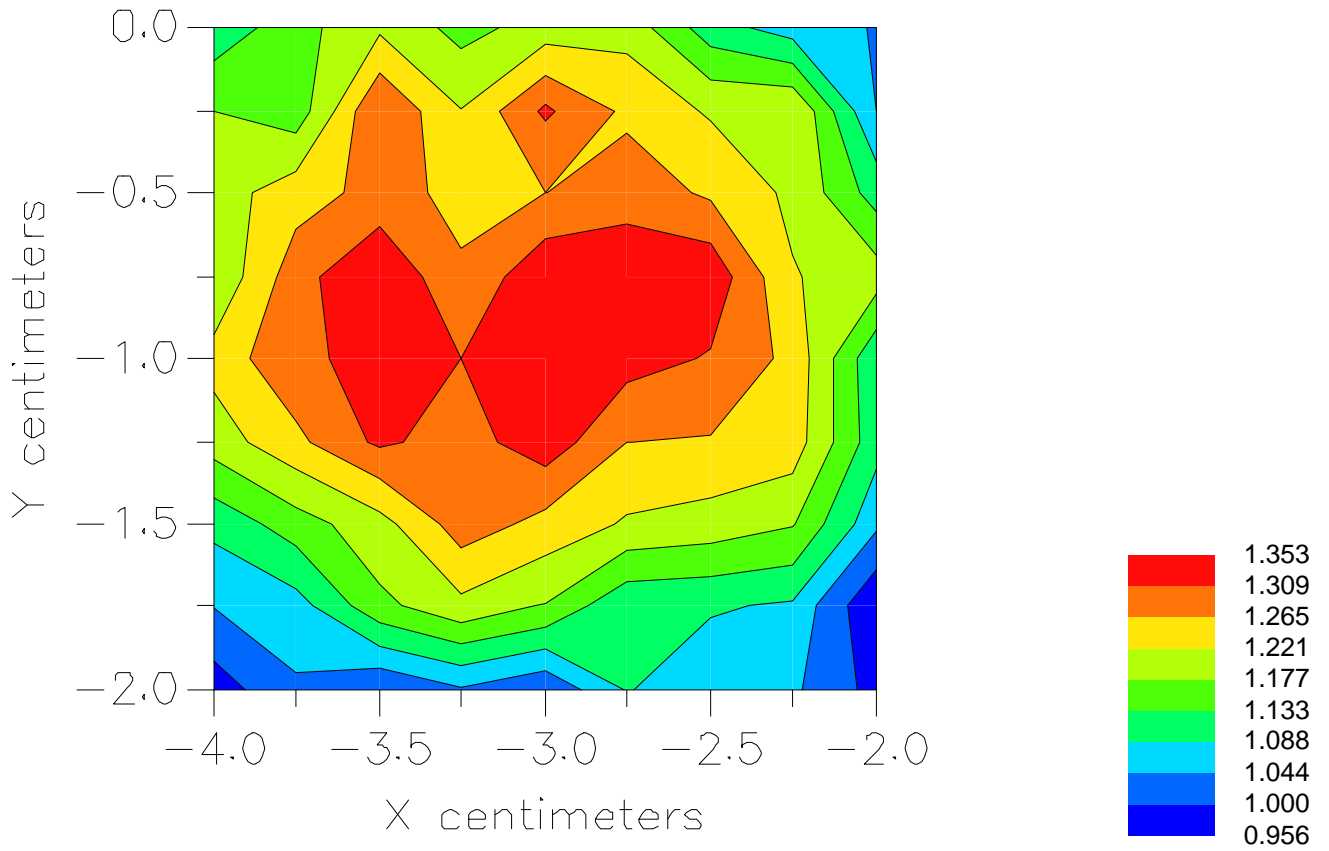


File : 01032908\_ZOOM

Start : 29-Mar-101 02:10:01 pm End : 29-Mar-101 02:20:40 pm

AXESSTEL/ACW-P1900/4;1880.00MHz;W;Helical/Internal;

Body/Abdomen;ZOOM/SAR;PCTEST/E Field/0 DegreesMuscle/54.200/1.850



File : c:/idx3/SYSTEM/SARMEAS3/data/Normal/01032903\_ZOOM.VLT  
Start : 29-Mar-101 11:42:01 am End : 29-Mar-101 11:52:23 am

Radio Type : AXESSTEL  
Model Number : ACW-P1900  
Serial Number : 4  
Frequency : 1908.75 MHz  
Peak Trans. Pwr : 0.320 W  
Start Trans. Pwr : 0.320 W  
Antenna Type : Helical  
Antenna Posn. : Internal  
Phantom Type : Body  
Phantom Posn. : Abdomen  
Scan Type : ZOOM/SAR  
Probe Name : PCTEST  
Field Type : E Field  
Orientation : 0 Degrees

Mixture Type = Muscle  
Mixture Dielectric Constant = 54.200  
Mixture Conductivity = 1.850

Comment :  
AXESSTEL WLL PCS MODE PHONE  
CHAN 1175 Conducted 25.0 dBm  
AXESSTEL WLL PCS MODE PHONE

Robot : PCTEST

Probe Offset = 0.25 cm  
Sensor Factor = 0.0108  
Conversion Factor = 1.378

PCTEST Amplifier Channel Settings : 0.245 0.231 0.224

Max Location : X = -2.500, Y = -1.500, Z = 0.000 (cm) Value = 11.174

Measured Values (volts) =  
1.020E-002 7.388E-003 5.215E-003 3.815E-003 2.844E-003 2.275E-003  
1.766E-003 1.287E-003 8.519E-004 6.679E-004 5.811E-004 4.443E-004  
3.933E-004 2.241E-004 1.611E-004 1.735E-004 1.792E-004 1.857E-004  
1.579E-004 1.244E-004 0.000E+000

Calc. Voltage @ Surface (Vs) = 0.0143

Voltage @ 1.00 cm (Vt) = 0.0038

Ave. Voltage (Vs+Vt)/2 = 0.0090

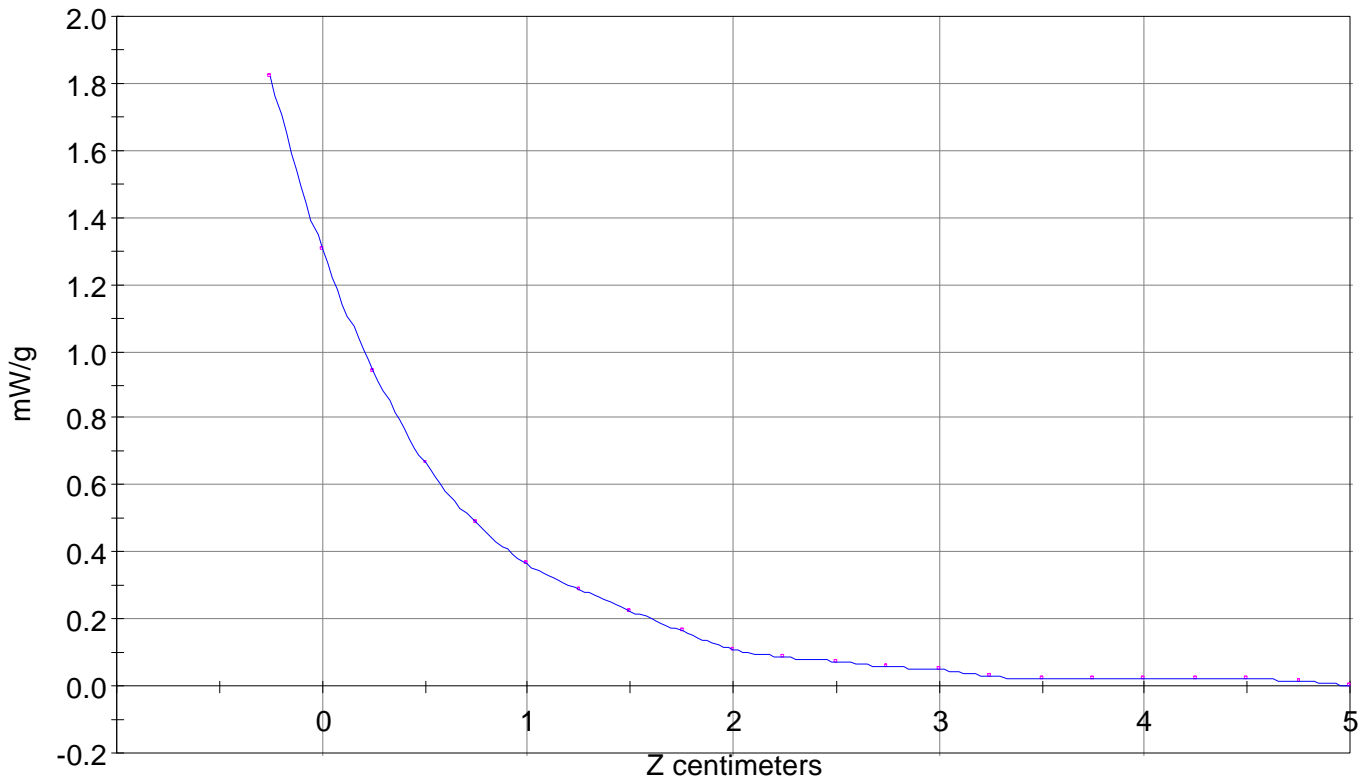
Ave. SAR over 1 g (mW/g) = 1.1538

### SAR Scan

File : 01032903\_ZOOM

Start : 29-Mar-101 11:42:01 am End : 29-Mar-101 11:52:23 am

AXESSTEL/ACW-P1900/4;1908.75MHz;W;Helical/Internal;  
Body/Abdomen;ZOOM/SAR;PCTEST/E Field/0 DegreesMuscle/54.200/1.850

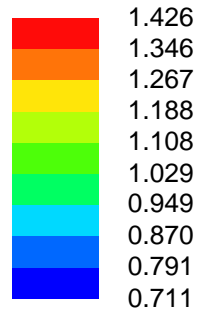
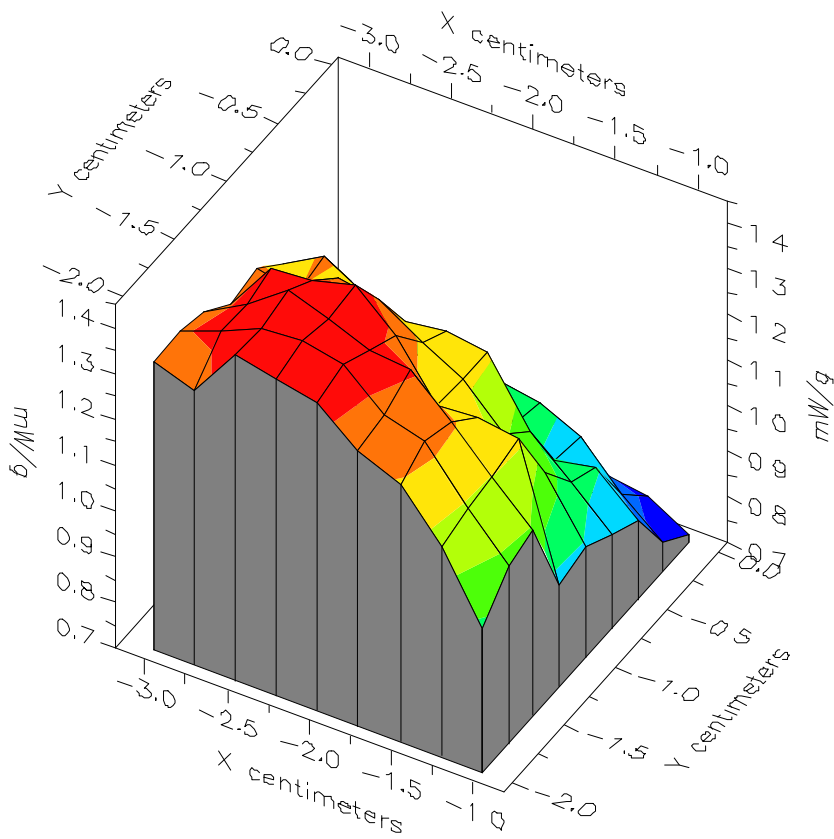


File : 01032903\_ZOOM

Start : 29-Mar-101 11:42:01 am End : 29-Mar-101 11:52:23 am

AXESSTEL/ACW-P1900/4;1908.75MHz;W;Helical/Internal;

Body/Abdomen;ZOOM/SAR;PCTEST/E Field/0 DegreesMuscle/54.200/1.850



File : 01032903\_ZOOM

Start : 29-Mar-101 11:42:01 am End : 29-Mar-101 11:52:23 am

AXESSTEL/ACW-P1900/4;1908.75MHz;W;Helical/Internal;

Body/Abdomen;ZOOM/SAR;PCTEST/E Field/0 DegreesMuscle/54.200/1.850

