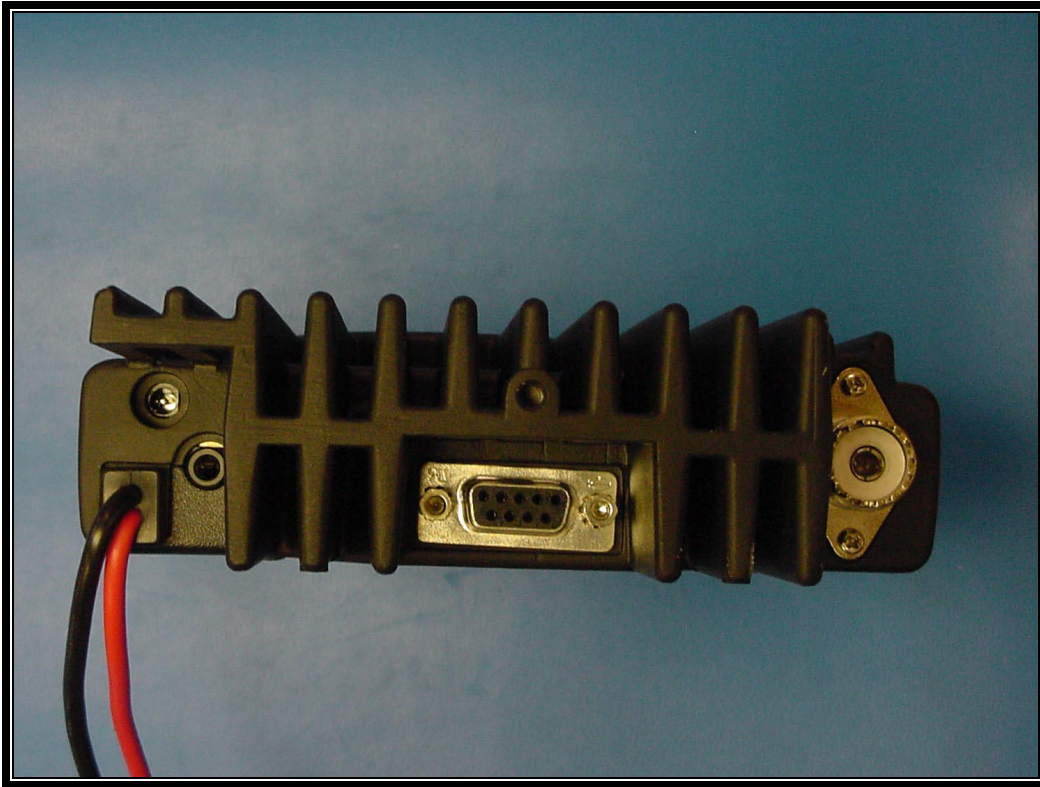


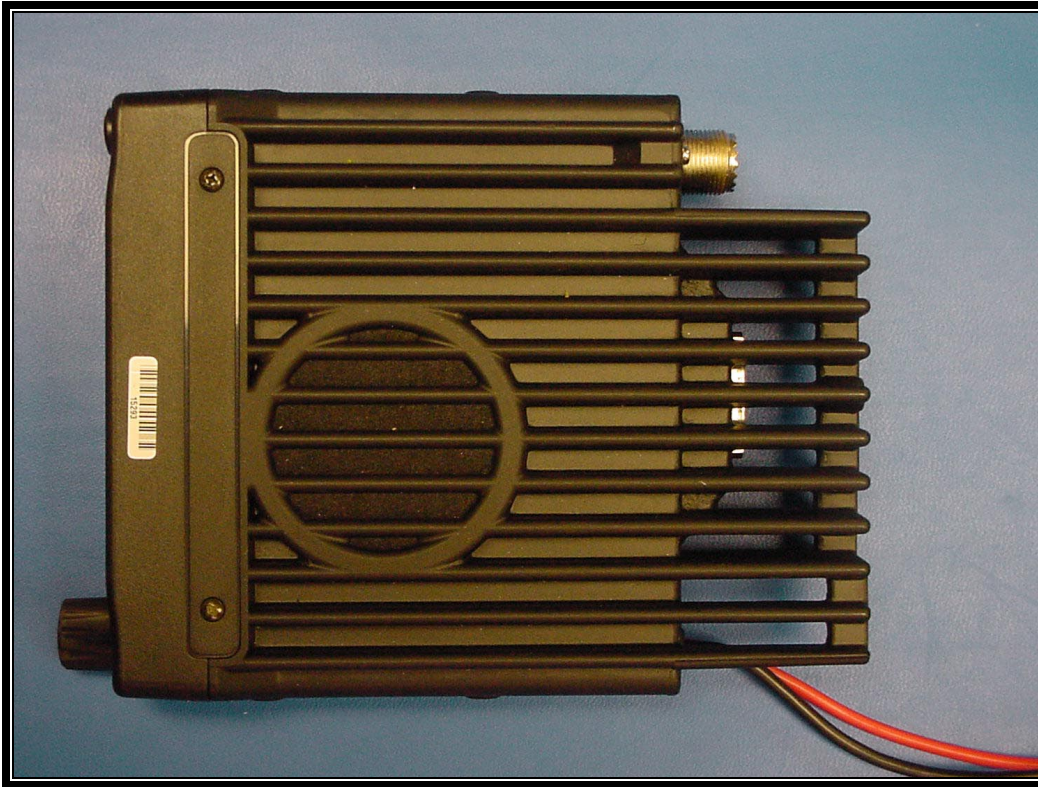
APPENDIX J: EXTERNAL PHOTOGRAPHS



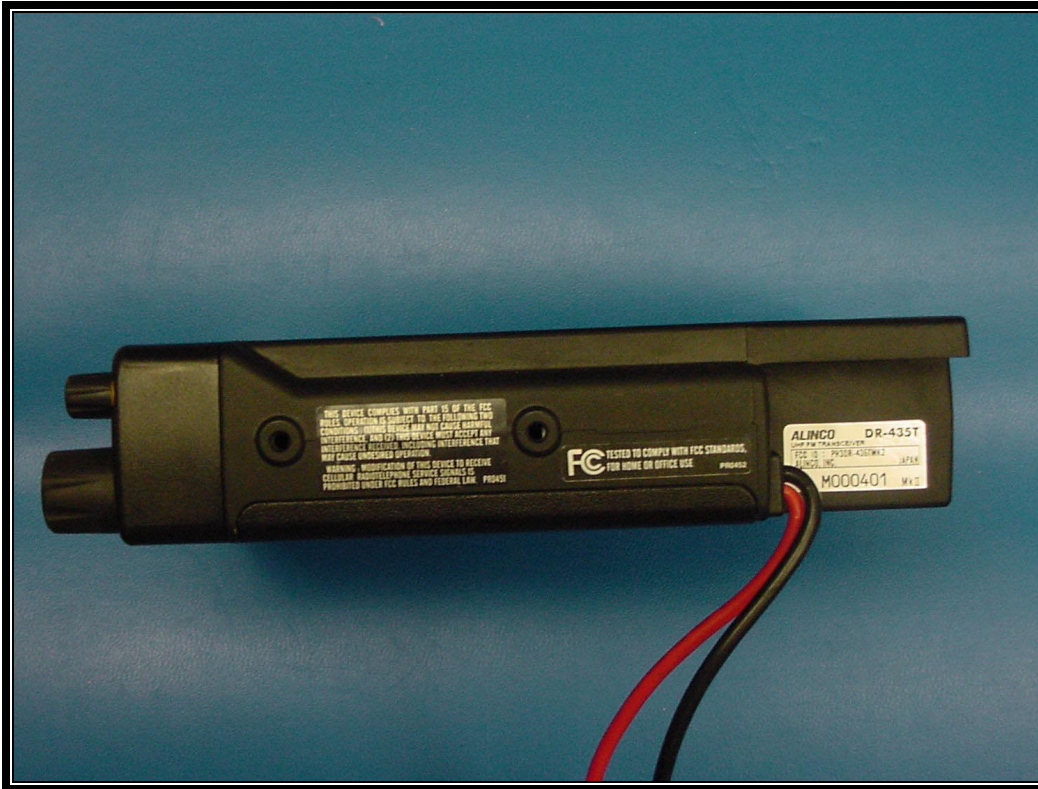
PHOTOGRAPH 7: FRONT VIEW OF EUT



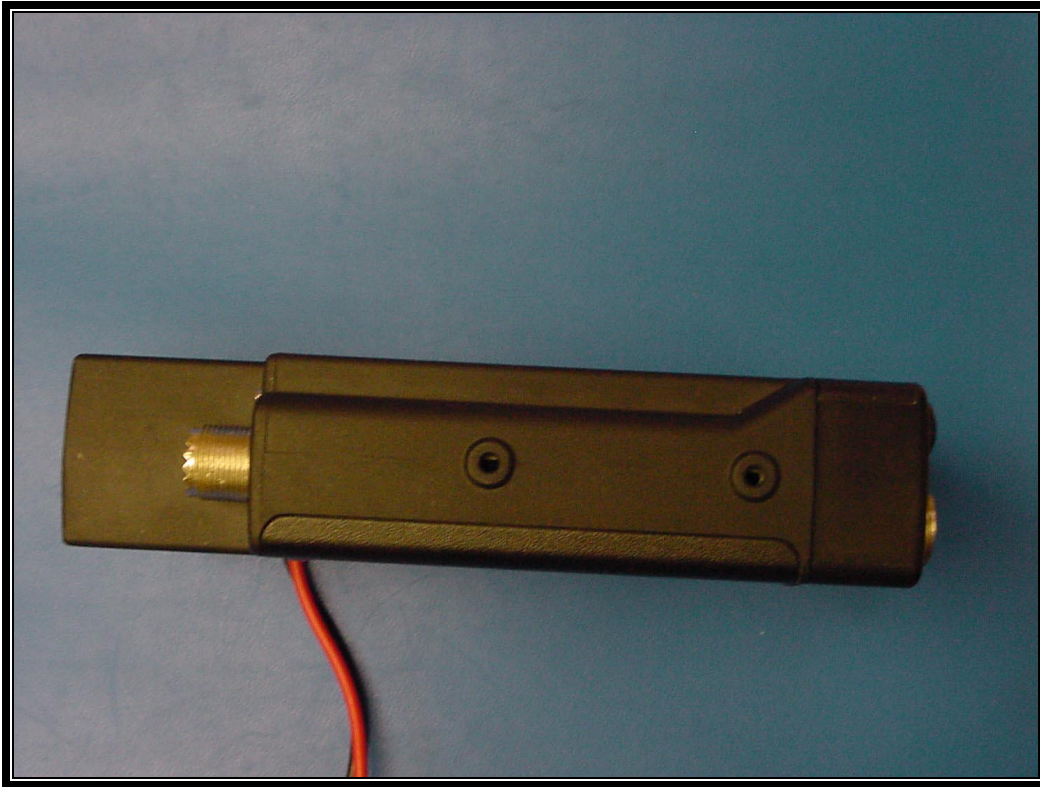
PHOTOGRAPH 8: BACK VIEW OF EUT



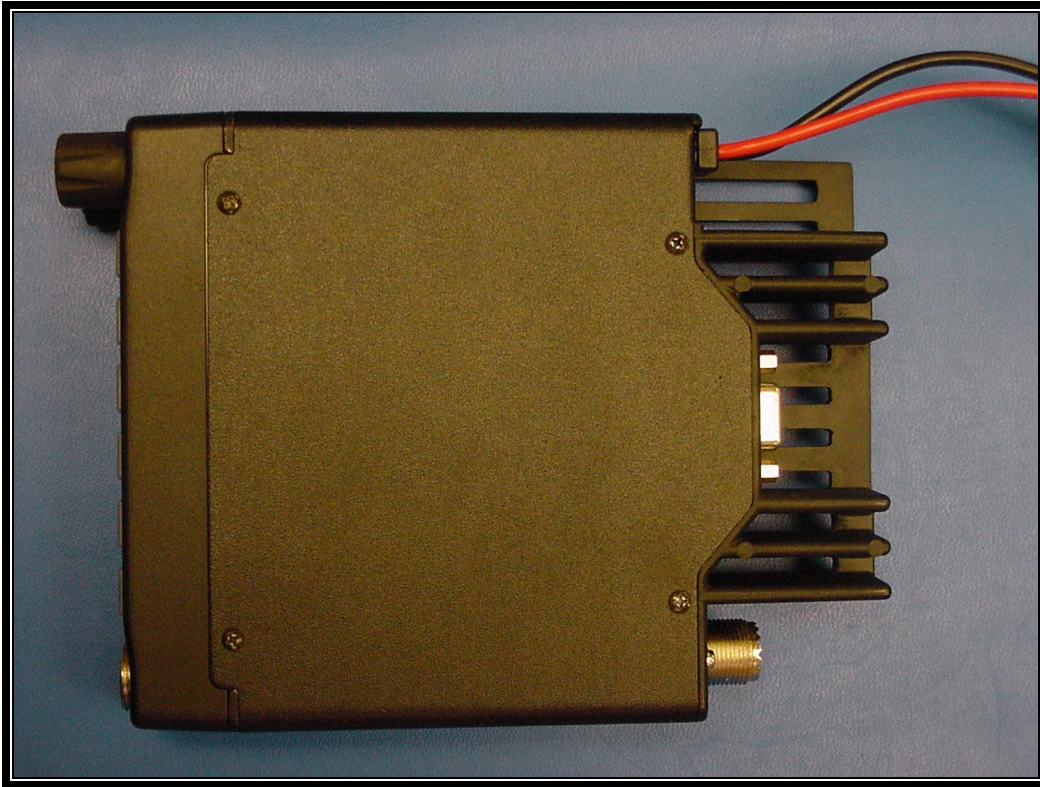
PHOTOGRAPH 9: TOP VIEW OF EUT



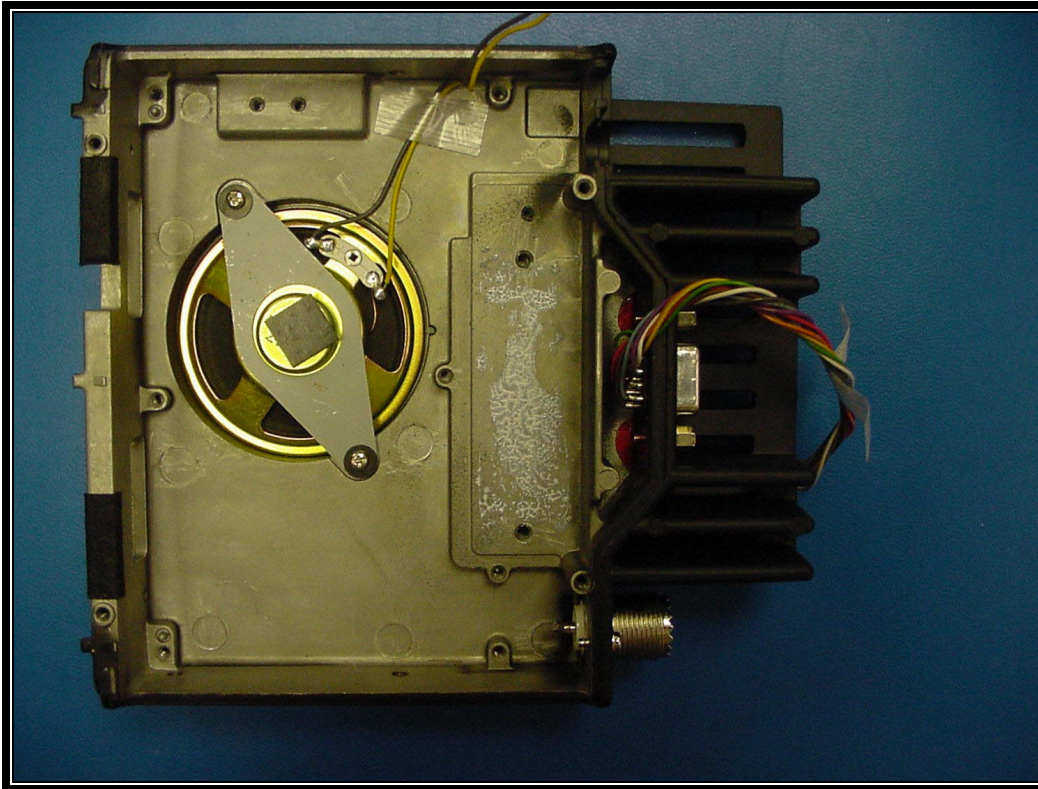
PHOTOGRAPH 10: RIGHT SIDE OF EUT



PHOTOGRAPH 11: LEFT SIDE OF EUT



PHOTOGRAPH 12: BOTTOM OF EUT

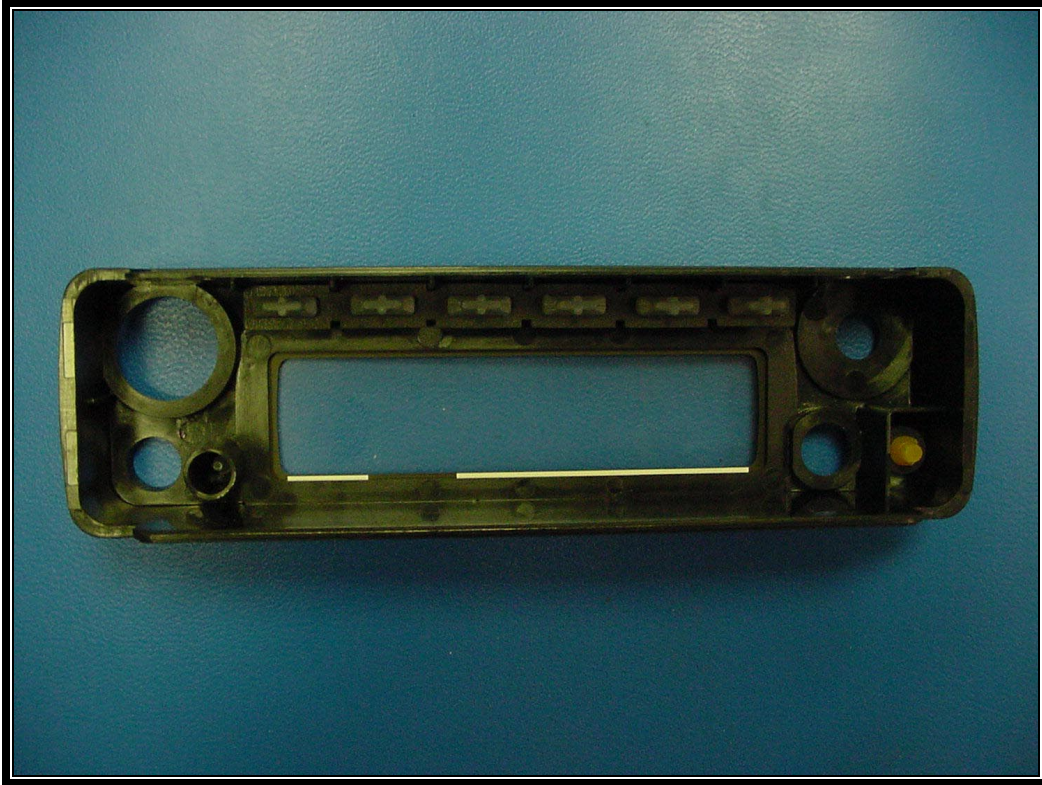


PHOTOGRAPH 13: INSIDE OF CHASSIS WITH PCB'S REMOVED

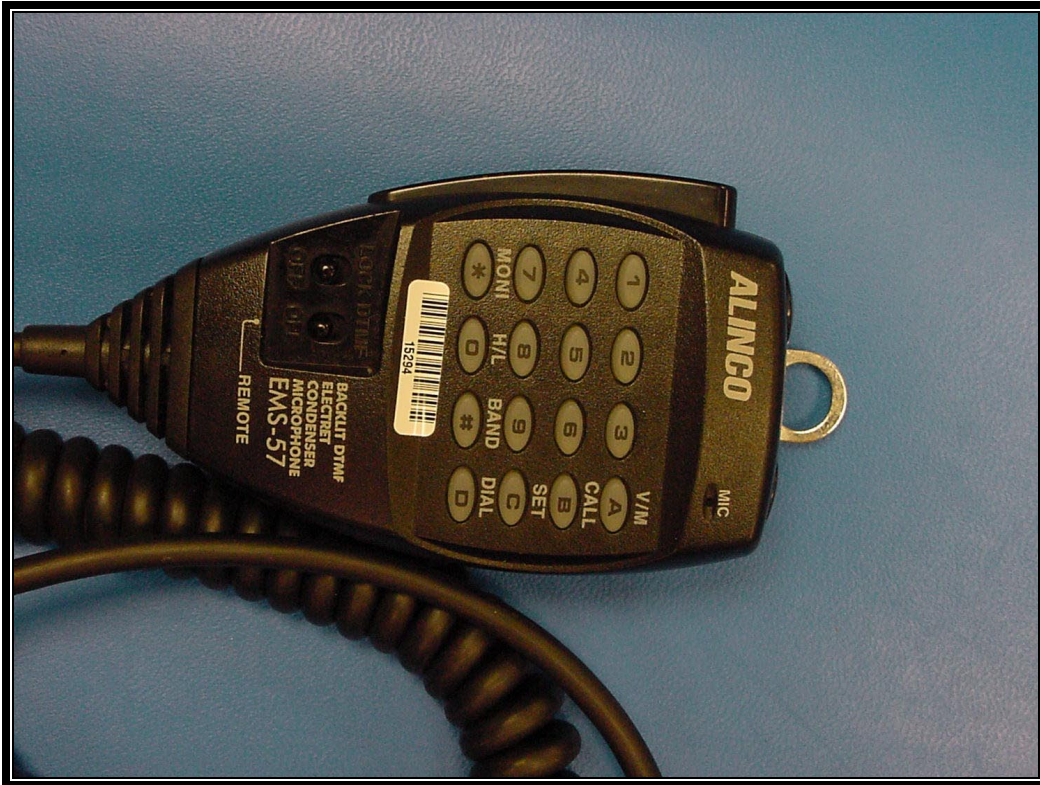


PHOTOGRAPH 14: WHIP ANTENNA

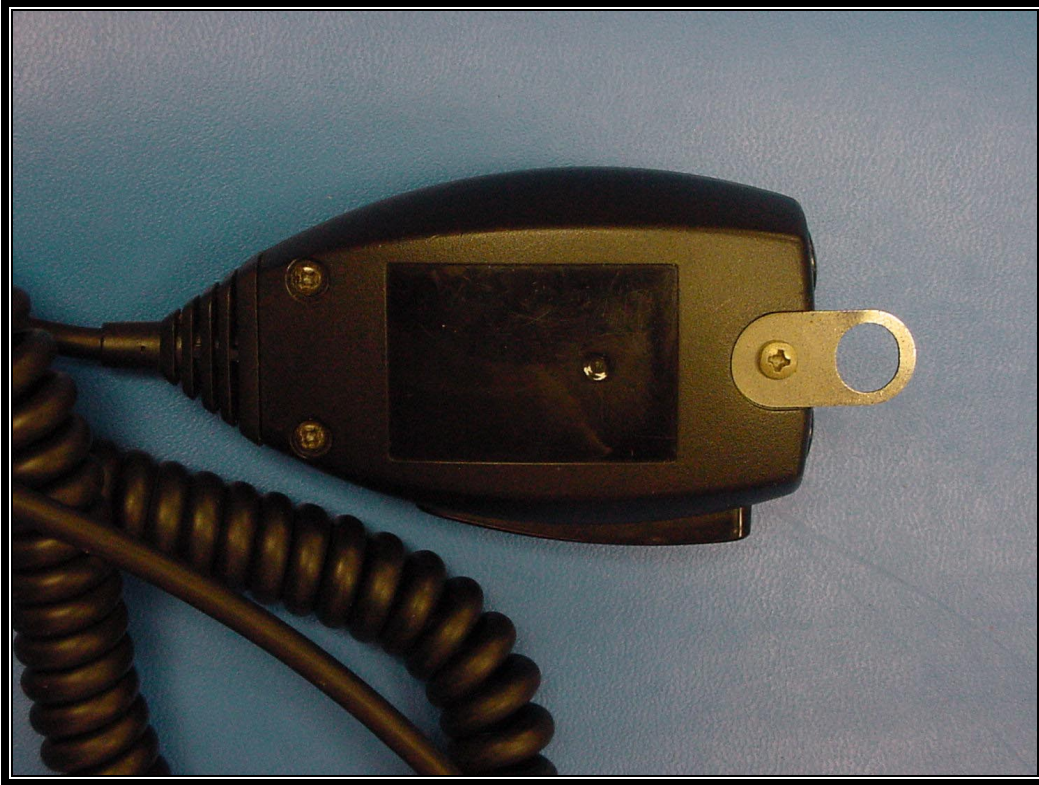




PHOTOGRAPH 15: FRONT COVER INSIDE



PHOTOGRAPH 16: MICROPHONE FRONT VIEW



PHOTOGRAPH 17: MICROPHONE BACK VIEW



PHOTOGRAPH 18: OVERALL UNIT