

## ◦ BATTERY INFORMATION

### ⦿ How to Store the Battery

1. The battery should be kept in the status of 50%-100% charged when storing.
2. It should be kept in cool, dry environment and remove it from the transceiver.
3. Keep away from source of heat and direct sunlight.

#### WARNING

- ▲ Do not short circuit battery terminals.
- ▲ Never attempt to remove the casing from the battery pack.
- ▲ Never assemble the battery hazardous in explosive atmosphere as, spark may cause explosion.
- ▲ Do not put the battery in hot environment or throw it into fire, it may also cause explosion.

**Note :** Battery pack discharges faster when it is attached to the radio. Please always remove it from the radio when not in use.

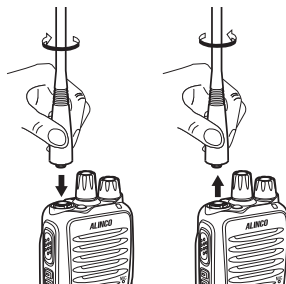
### ⦿ Installing / Removing the Antenna

#### ■ Installing the Antenna

1. Hold the antenna by its base.
2. Align the grooves at the base of the antenna with the protrusions on the antenna connector.
3. Slide the antenna down and turn it clockwise until it stops.
4. Confirm that the antenna is securely connected. Check the connection from time to time.

#### ■ Removing the Antenna

Turn the antenna counter-clockwise to disconnect the antenna.



**Note :** Do not use third-party antenna as it may radiate more RF that exceeds SAR limit guidances.

## ◦ PREPARATION

**ALINCO**

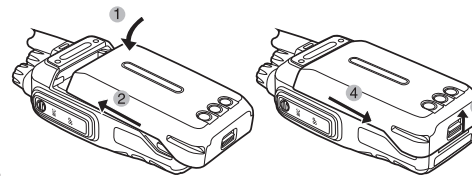
### ⦿ Installing / Removing the Battery

#### ■ Installing the battery

Align the catches on the unit with the grooves on the battery pack, slide the pack forward and close the latch until it clicks.

#### ■ Removing the battery pack

Push the latch in the direction of the arrow ③, and pull out the battery pack.



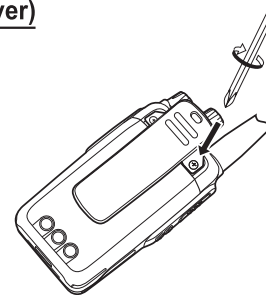
### ⦿ Installing / Removing the Belt Clip (prepare screw driver)

#### ■ Installing the Belt Clip:

1. Put the belt clip on the back of the unit, and turn the screw clockwise until it stops.
2. Confirm that the belt clip is securely attached.  
\* Tighten up the screw occasionally.

#### ■ Removing the Belt Clip:

Turn the screw counter-clockwise to remove the belt clip.  
Caution: Use the screws of specified size only. Others may cause damage to the product.  
(screws size 2.5mm×6.5mm)



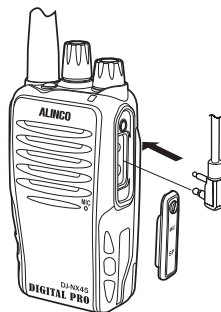
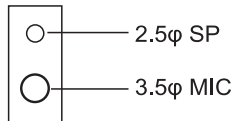
## ◦ PREPARATION

### 🔊 Accessories

Unveil the MIC-SP jack cover and then insert the Microphone plug into MIC-SPjack.

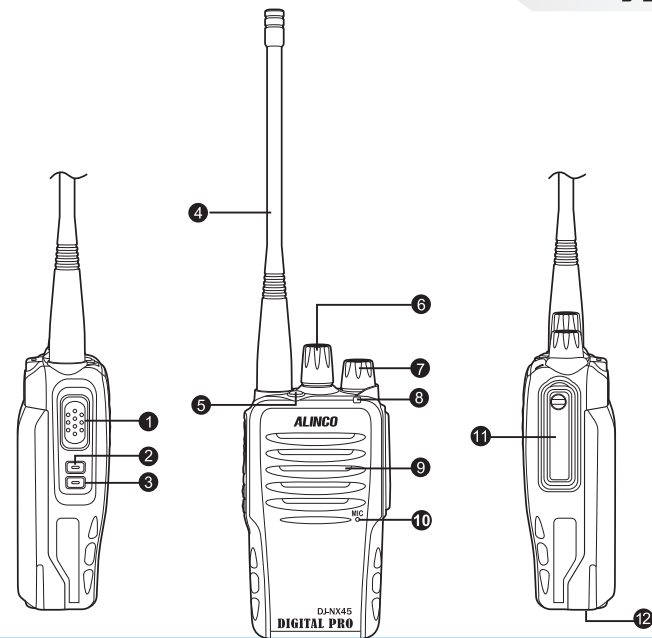
#### Note:

- 1.To keep the radio dust and splash resistant, the cover must be closed properly with the original supplied cover.
- 2.The radio is not dust and splash resistant while using the optional accessory risking that the water may penetrate inside through the plug.
- 3.Use of third party accessory may result in damage to this product. It will void our warranty for repair.



## GETTING ACQUAINTED

# ALINCO



## ◦ GETTING ACQUAINTED

- ❶ **PTT Key:** Press and hold this key to transmit. Release the key to receive.
- ❷ **PF1 Key:** Programmable Function key 1
- ❸ **PF2 Key:** Programmable Function key 2
- ❹ **Antenna**
- ❺ **Top key.**
- ❻ **Channel Selector Knob:** Turn the selector knob to select desired channel. (Marked with Ch numbers)
- ❼ **POWER / VOLUME Knob:** To turn on/off the power and adjust the audio level. (Marked VOL)
- ❽ **LED indicator:** Turns green while receiving, red while transmitting.
- ❾ **Speaker**
- ❿ **Microphone (MIC)**
- ⓫ **Optional accessory port**
- ⓬ **Battery Lock**

**Note:** Do not cover the microphone hole by labels or a finger while speaking, Always keep the mic hole clean. Closed mic hole will cause poor modulation sound.

## ◦ GETTING ACQUAINTED

**ALINCO**

### 🔊 LED Indication

LED State	Operation
Red	Transmitting
Green	Receiving
Flashing Green	Reading / Writing data

### 🔊 Programmable keys default setting

1	Press TOP Key	None
2	Press PF1 Key	None
3	Press PF2 Key	Monitor
4	Press and hold PF1 Key	None
5	Press and hold PF2 Key	None

These keys are programmable and can be assigned to any features as a shortcut. Manual programming is not supported so please contact your dealer if re-programming is necessary.

## ◦ BASIC OPERATIONS

### 🔊 Turning On the Power

Turn **【POWER】** / **【VOLUME】** knob clockwise to power on.  
Turn it counterclockwise to power off.

### 🔊 Adjusting Audio output level

Turn **【POWER】** / **【VOLUME】** knob clockwise to increase the audio level, counterclockwise to decrease.  
The voice guidance or a channel beep can be used as sound level reference.

#### **CAUTION:**

**Never use earphone while adjusting audio level. The max audio output is loud enough to hurt your eardrums. You may feel a static shock when wearing an earphone in a dry atmosphere but it's not a defect of product but a cause of nature. It is the same static shock you feel typically when opening a door of a car in certain conditions.**

### 🔊 Channels Selection

In stand-by state, turn the channel selector knob to select a desired channel.  
In case the voice guidance is activated, it announces the channel number in voice.  
If guidance is not in use, see a white line on the knob to identify the current channel.  
When an empty channel is selected, a beep sounds until a programmed channel is selected.

## ◦ BASIC OPERATIONS

# ALINCO

### 🔊 Monitor Function

When the MONI key is pressed, the squelch unmutes regardless of the Radio Access Number(RAN)/ Subtone setting/Optional Signaling.

### 🔊 Receiving

When you receive a signal the LED indicator turns to green, and receiving voice is heard if signaling setting matches. In case the voice is not heard, use monitor function to temporary release signaling setting and squelch. (Analog channel)

### 🔊 Transmitting

Use monitor function if available or see the LED indicator is not lit green to make sure the channel is free. Press and hold [PTT] key then speak into microphone (MIC). Keep the distance of about 5cm between your lips and MIC, and speak at normal voice level. Release [PTT] key to receive. While transmitting the LED indicator turns red. Adjust the distance or voice level for the best transmitting audio. It takes a fraction of second until it actually sends out the voice signal so it is a good practice that you take a short moment before start speaking.

### 🔊 Mode (CH Group) Selection

By PC-preprogramming, 320 channels can be assigned in total which are divided into 20 groups with 16 channels in each group.  
The Mode switch function is assigned to PF1 by default setting.

## ◦ OPTIONAL ACCESSORIES

**EBP-101 Li-ion battery pack (7.4V, 1800mAh)**

**EDC-219 Rapid charger stand**

**EDC-305 AC Adapter (AC120V)**

**EBC-51 Belt Clip**

**ERW-22 PC Programming Cable**

## ◦ SPECIFICATIONS

**ALINCO**

General	
Frequency Range	400-470MHz
Channel Capacity	320 channels(16chx20groupes)
Channel Spacing	12.5KHz(Digital) 6.25KHz(Analog Narrow) 12.5KHz(Analog Wide)
Operating Voltage	7.4V DC $\pm 20\%$
Battery Life	14 Hours(1800mAh), by TX 5(Sec)-RX 5(Sec)-Standby 90(Sec) working cycle
Frequency Stability	$\pm 2.5\text{ppm}$
Operating Temperature	$-20^{\circ}\text{C} \sim +60^{\circ}\text{C}$
Size (Approx)	120×59×38mm (with battery pack)
Weight (Approx)	238g (with battery pack and antenna)

## ◦ SPECIFICATIONS

Transmitter	
Power Output	5W(High)/2W(Middle)/1W(Low)
Modulation	4K00F1E/4K00F1D/4K00F7W/11K0F3E
Adjacent Channel Power	≥55dB

Receiver	
Adjacent Channel Selectivity	≥55dB
Intermodulation	≥55dB
Suprious Rejection	≥70dB
Audio Power Output	1000mW/10%
Audio Distortion	≤5%

封三

[MEMO]