

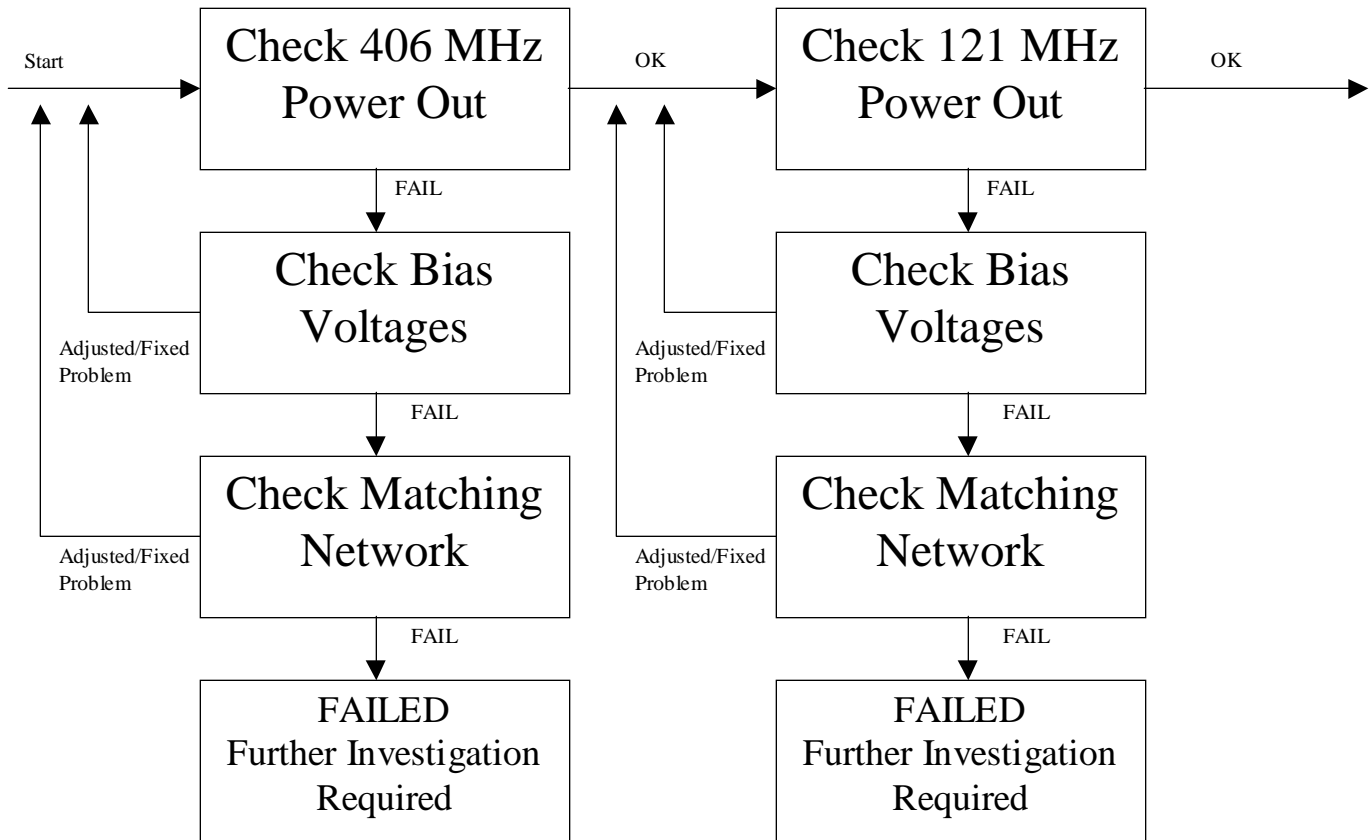
### (9) Tune up Procedure

The Pro-Find 406 will transmit at only one power level for each frequency. The unit is tuned at the manufacturer's facility. Users are unable to adjust any power level.

i) 406.028 MHz      5 W

ii) 121.5 MHz      50 mW

The Tune up Procedure is indicated in Flow Chart 1.



**Flow Chart 1. Tune up Procedures**