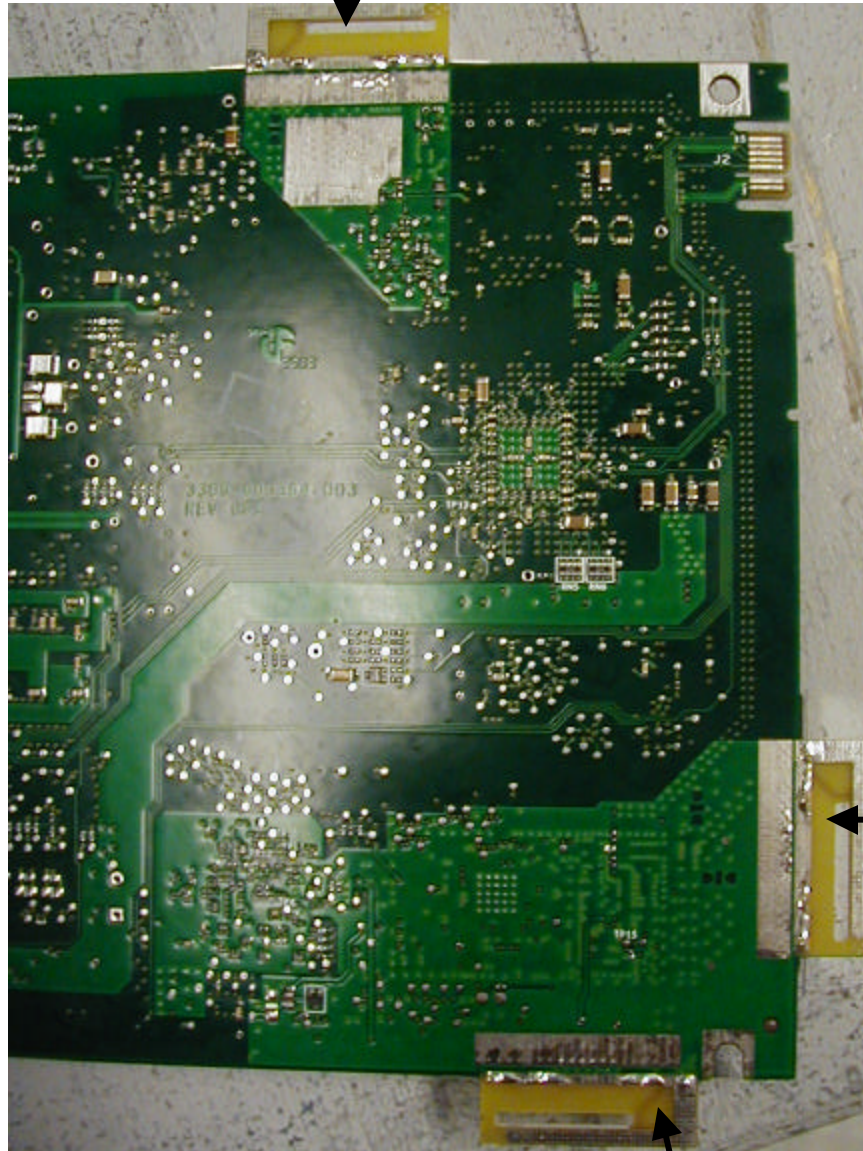


TX
Antenna

RX
antenna 1

RX antenna
2

TX
Antenna

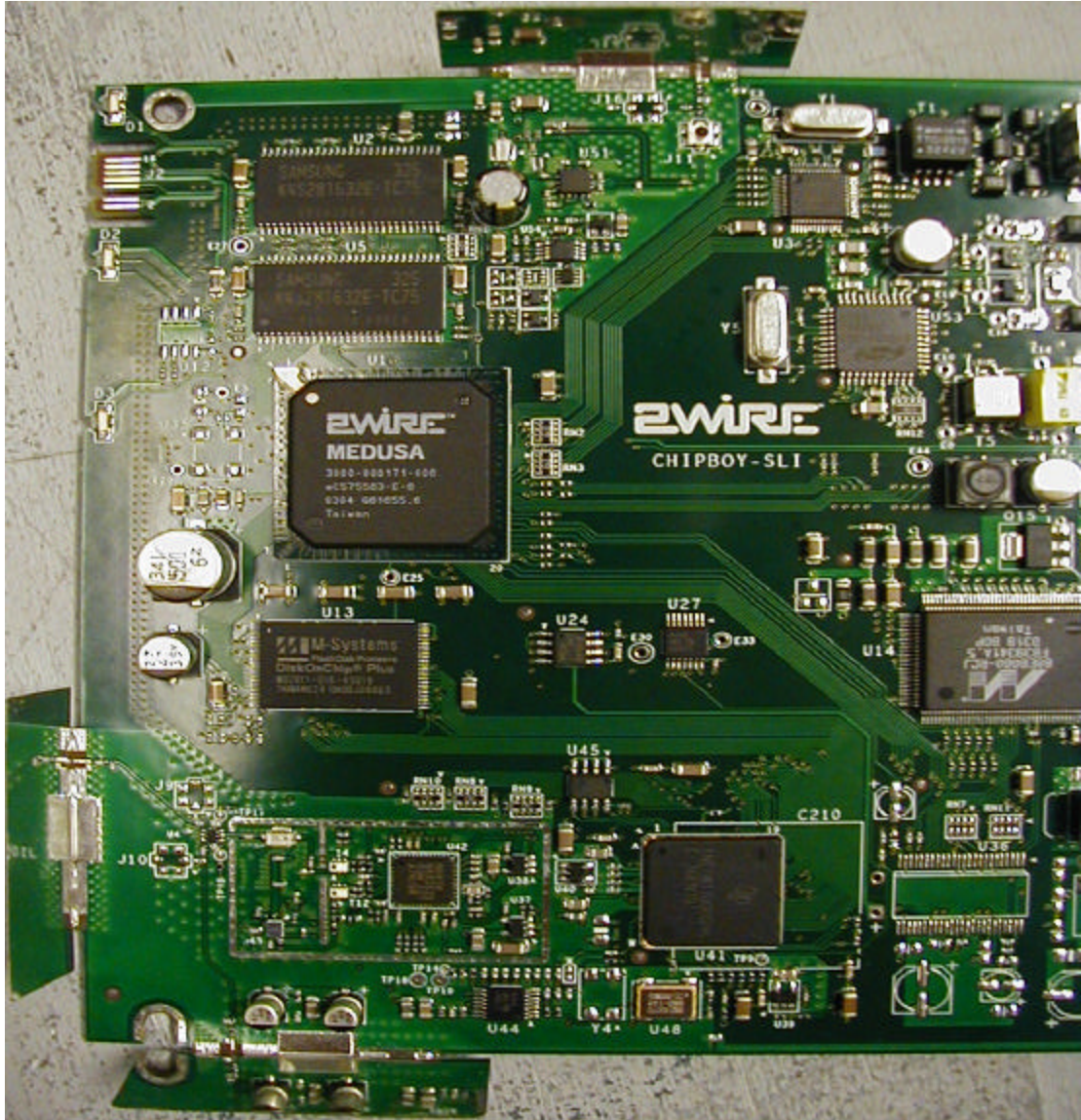


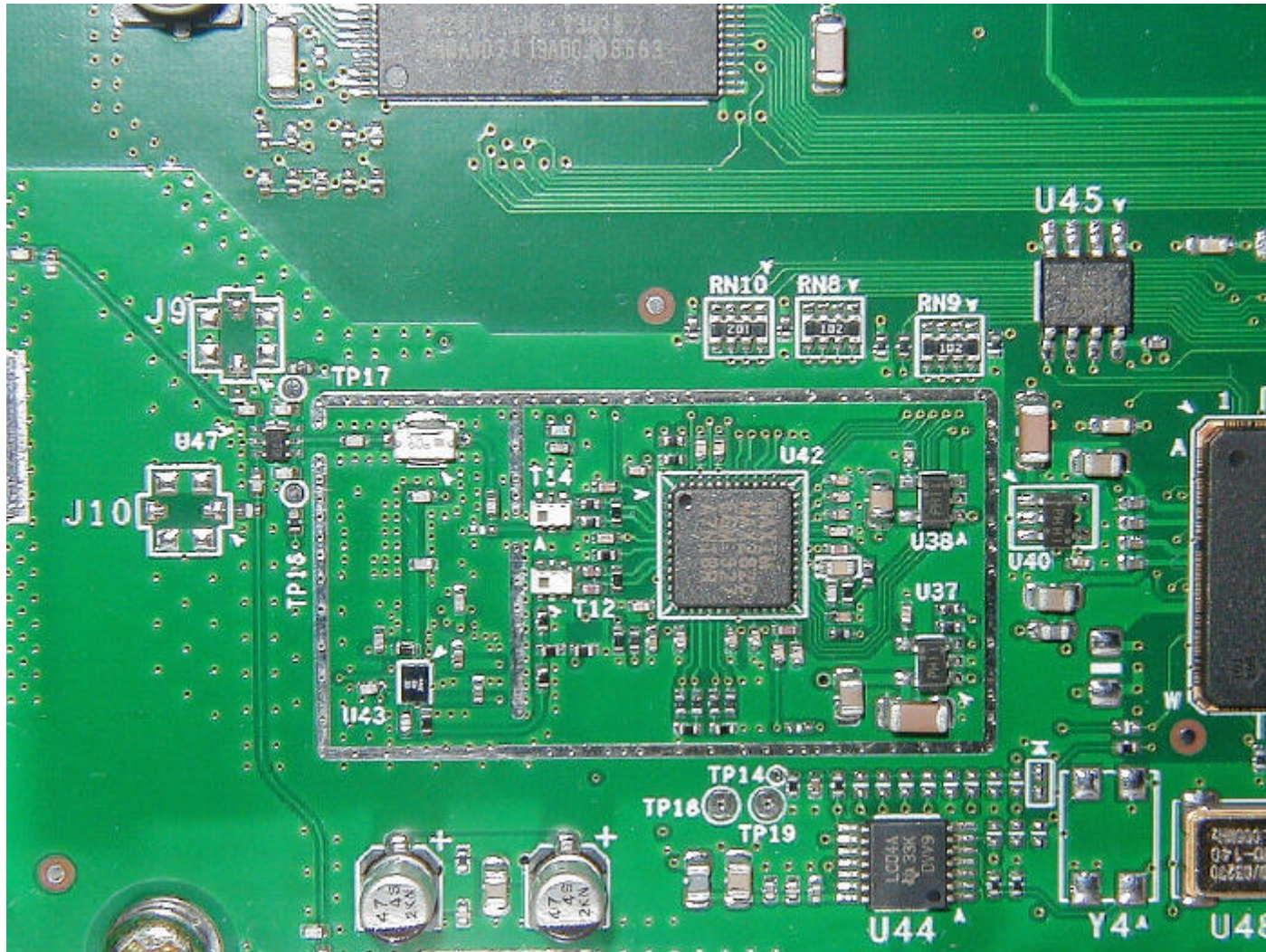
RX
Antenna 1



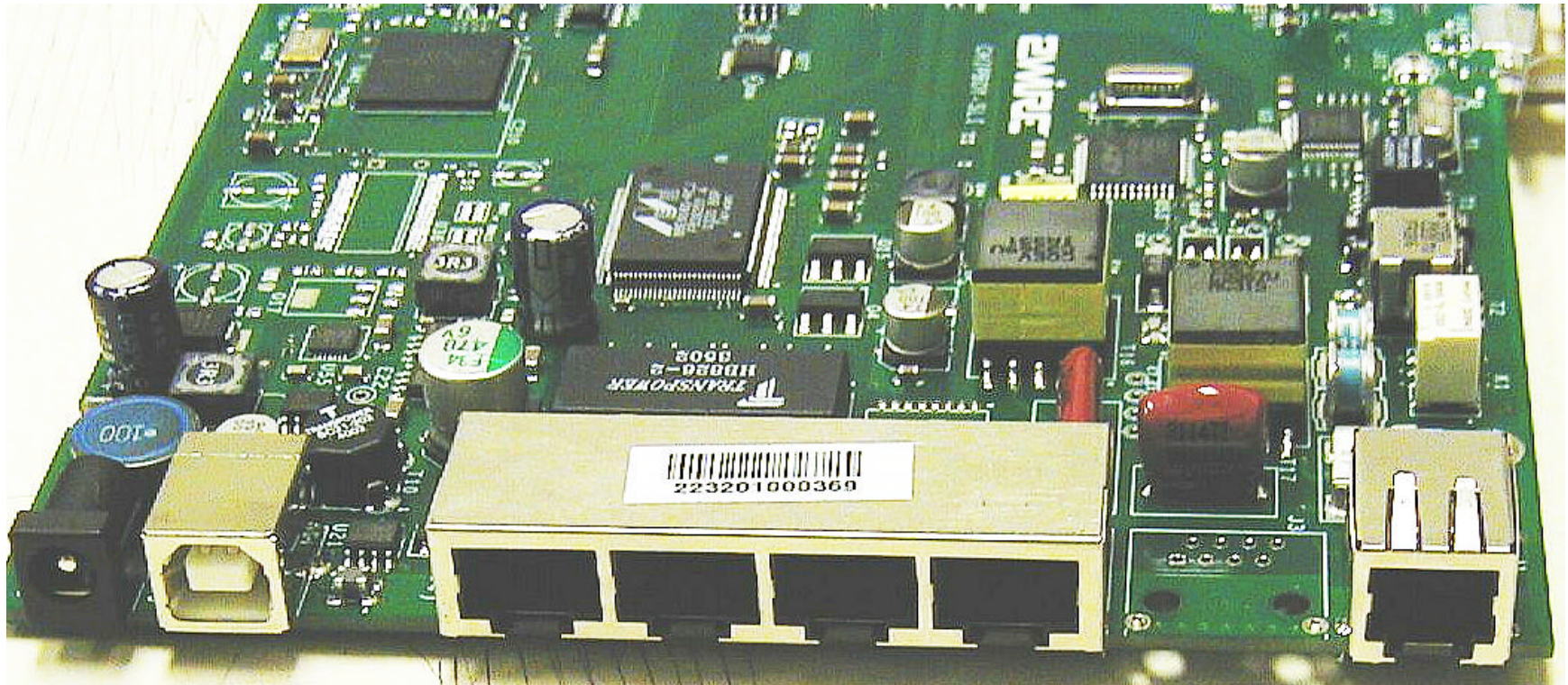
RX Antenna 2



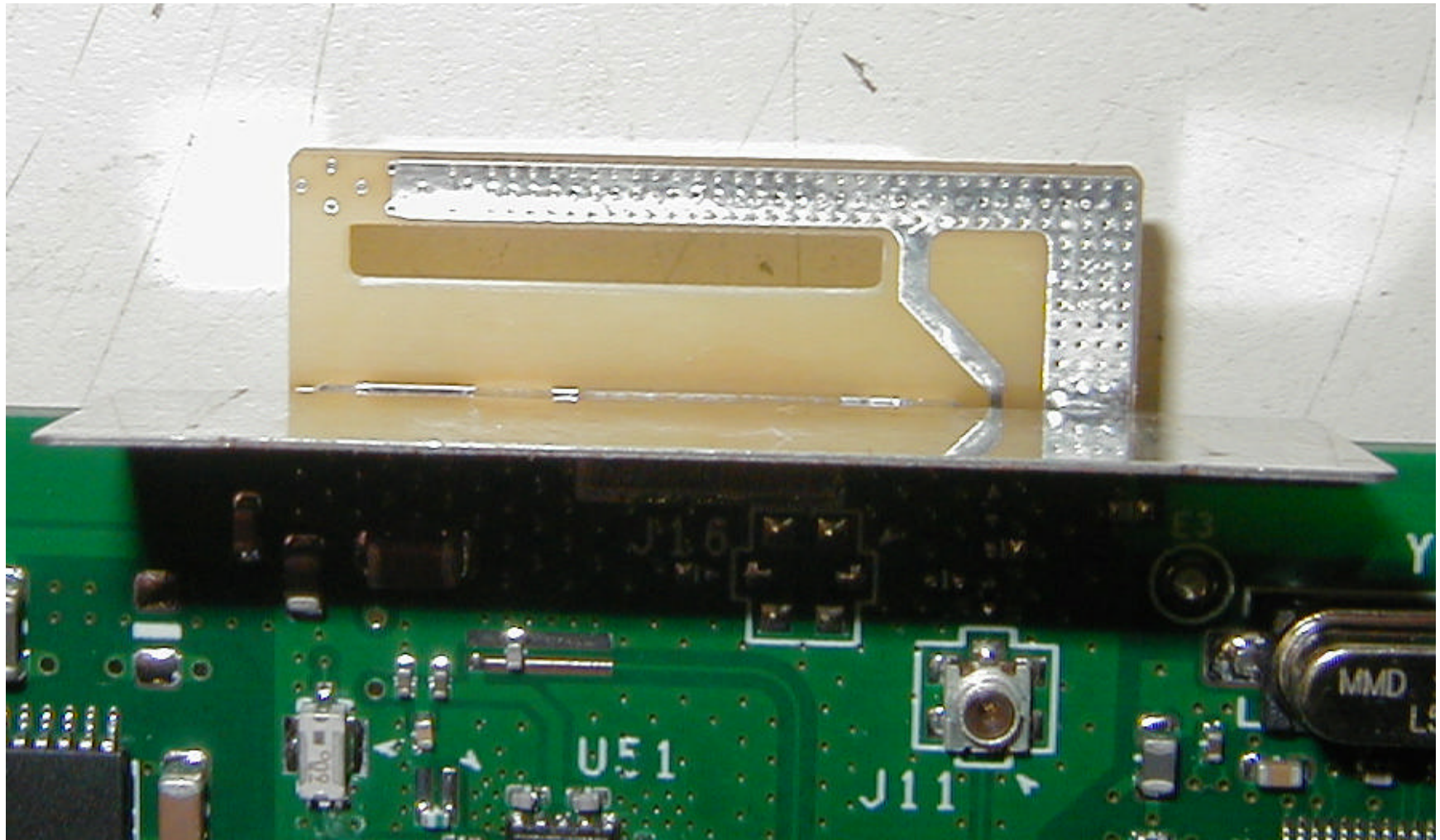




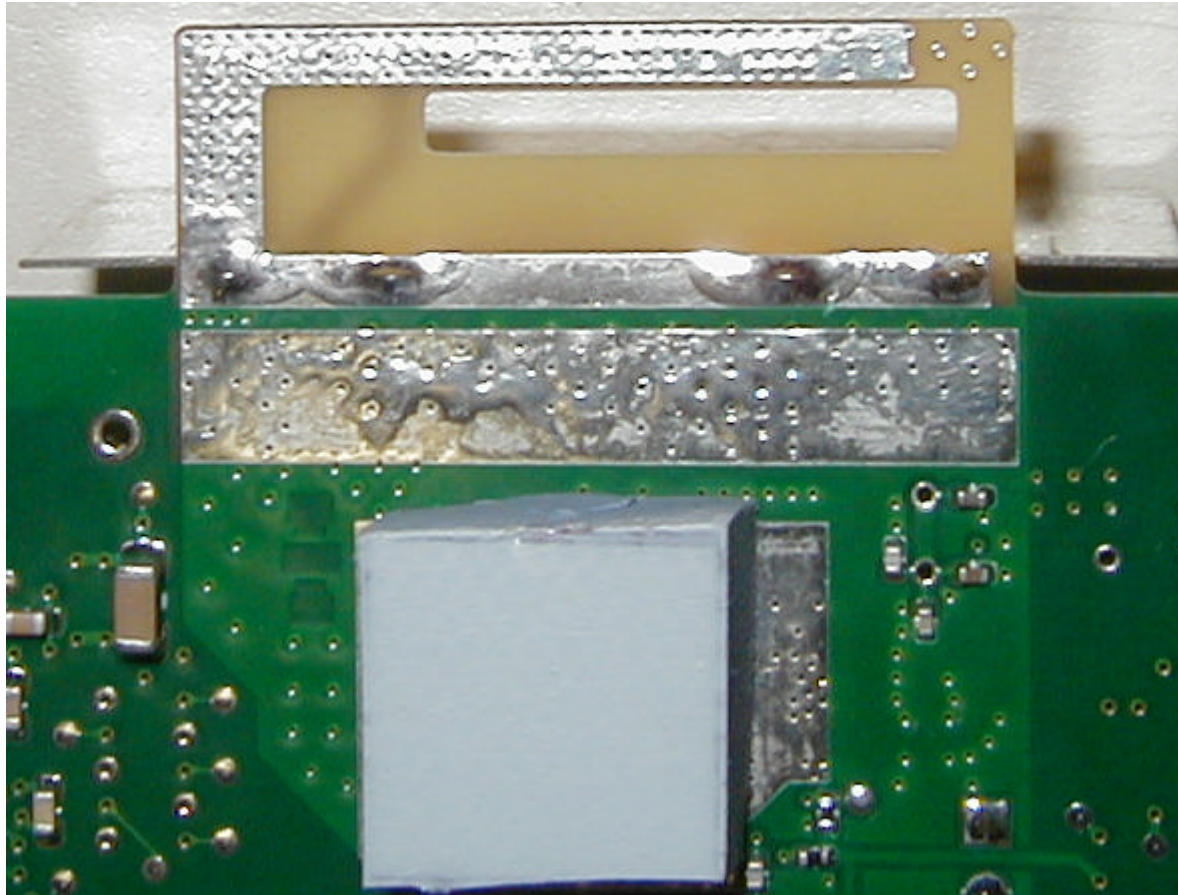
RF Board Portion



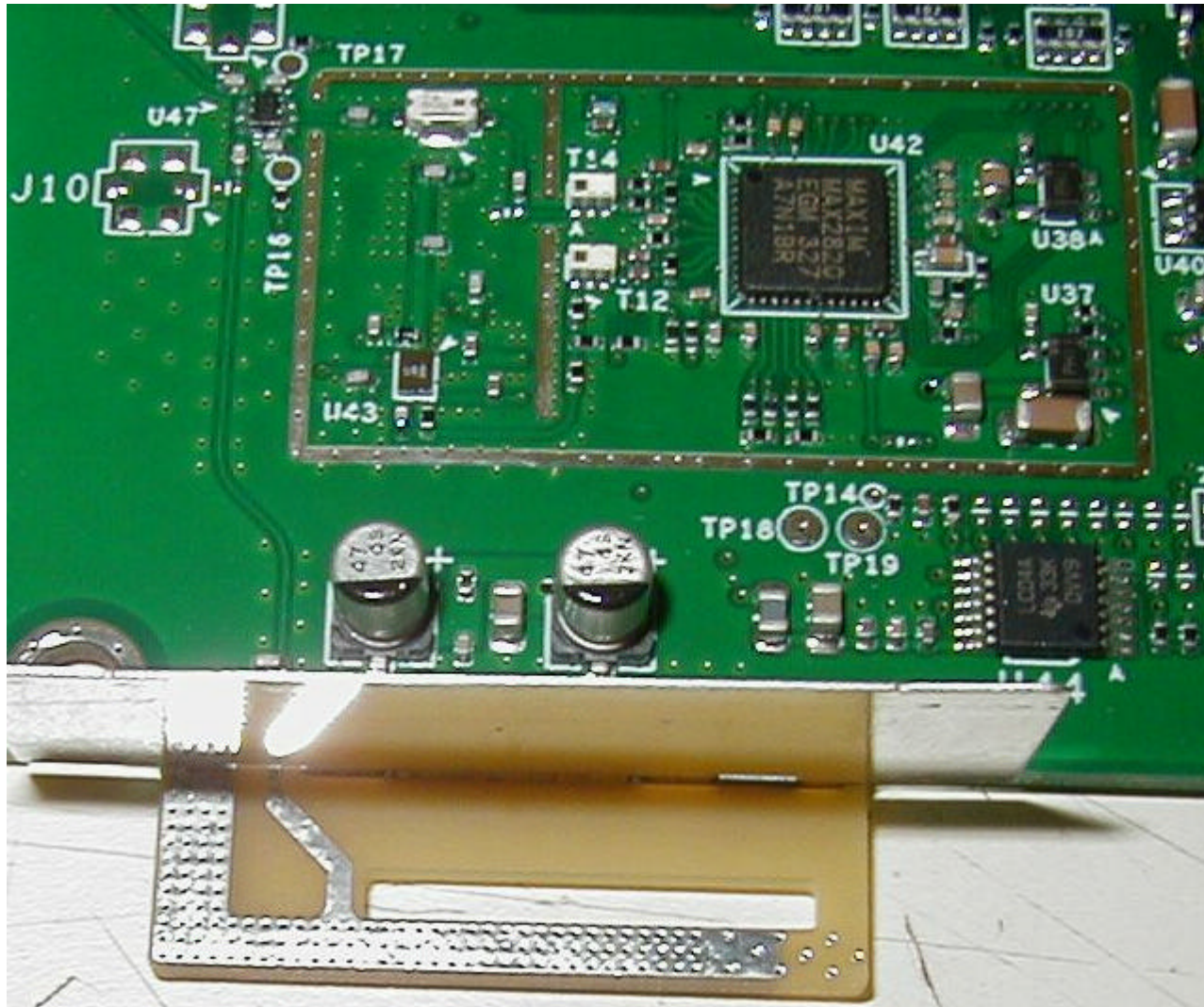
I/O ports (Full view of units back)



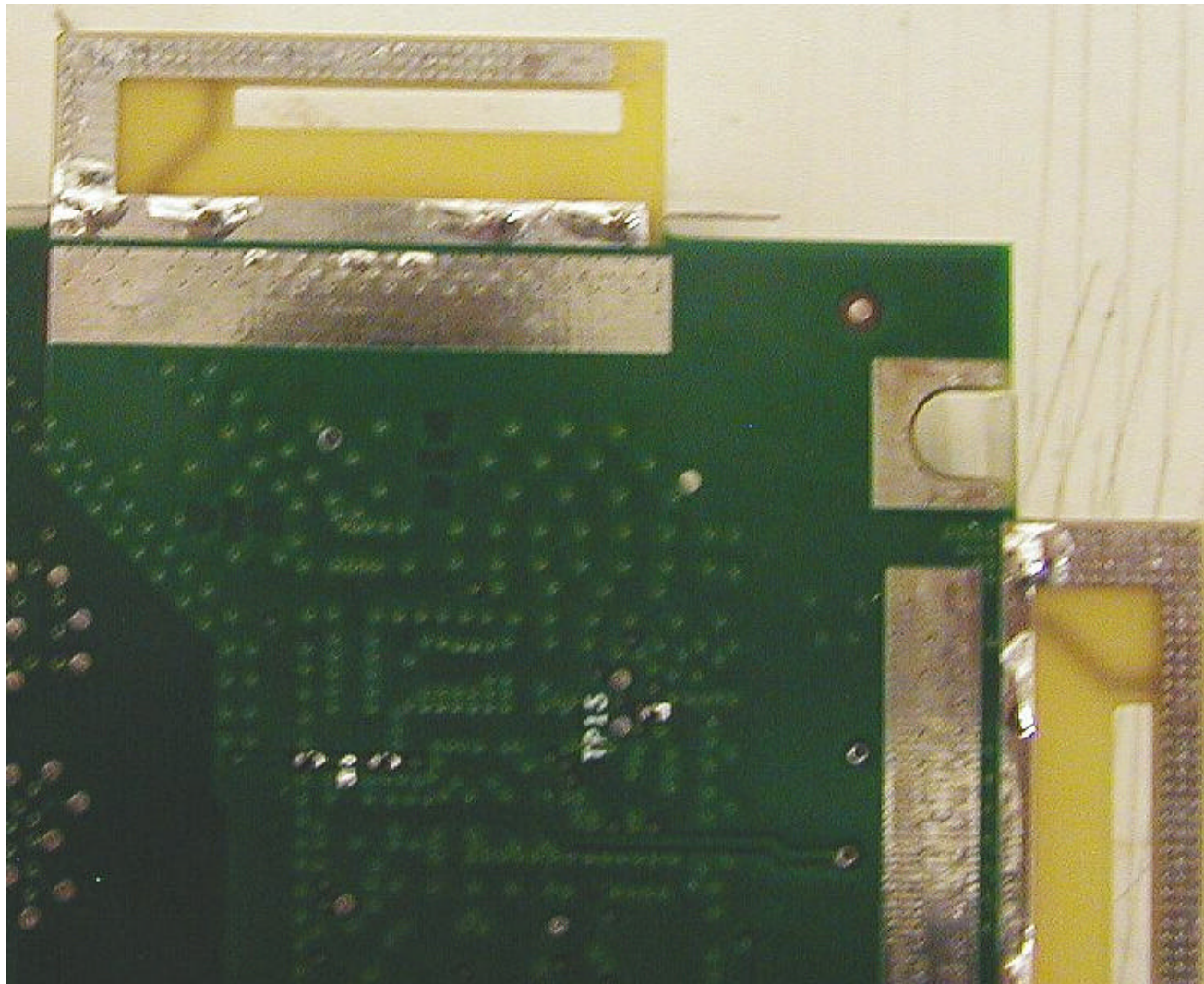
Front Side of TX antenna (Close View)



Back Side of Tx Antenna (Close View)



Front Side of Rx Antenna (Close View)



Back side of Rx Antennas (Close View)