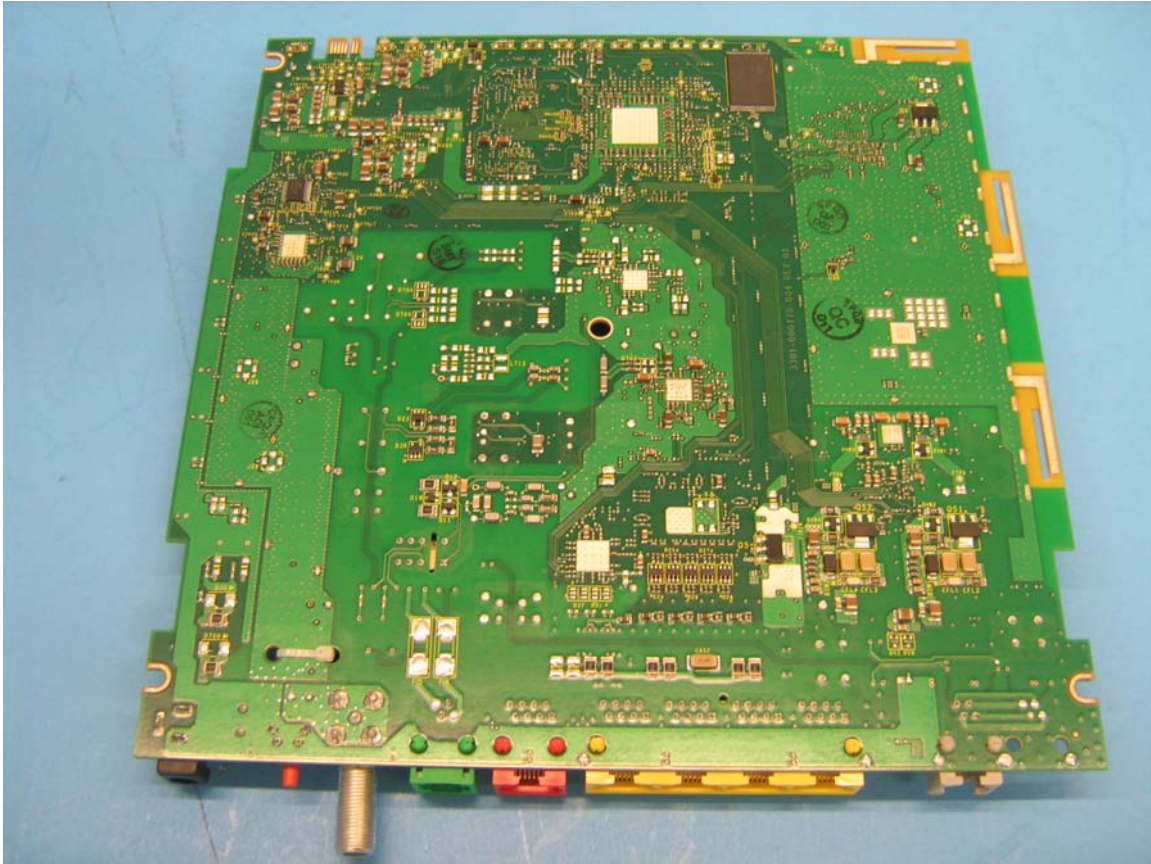


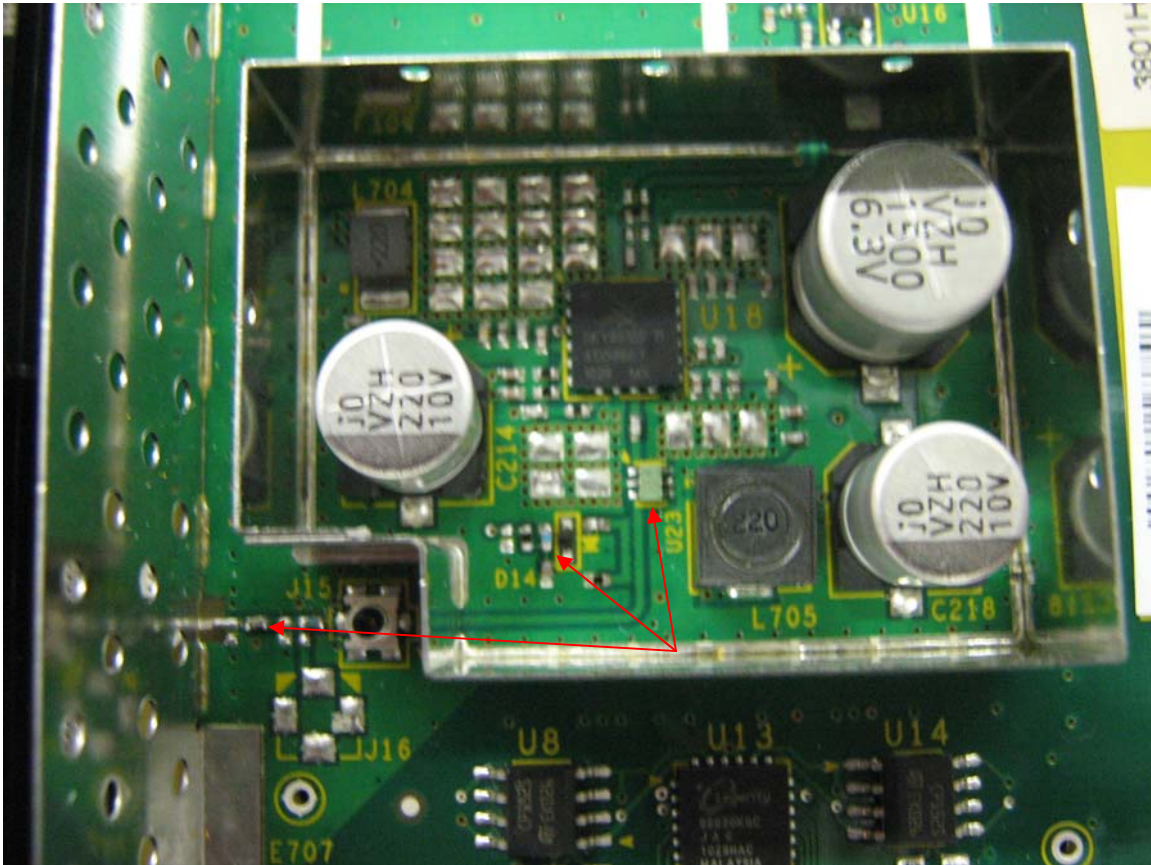
**Figure 1:** Internal Photo of HomePortal 3801HGV - PCB Board (Front Side)



**Figure 2:** Internal Photo of HomePortal 3801HGV - PCB Board (Rear Side)



**Figure 3:** Internal Photo of HomePortal 3801HGV - PCB Board (inside Plastic Housing)



**Figure 4:** Internal Photo of HomePortal 3801HGV – Changes

R193:

WAS: 2101 005005 000, RES,SMD,1.0K OHM,5%,0402,ROHS  
IS: 2101 004270 000, RES,SMD,681OHM,1%,0402,ROHS

C251:

WAS: NO INSTALL  
IS: 2301 020002 000, CAP,NPO,HI Q,0.5PF,25V,+/- 0.1PF,0402,ROHS

U23:

WAS: 2501 200039 000, FILTER,LP,2.4GHZ,WIDEBAND,0805 (NTK TECHNOLOGIES, INC., LAT250D 7038C)  
IS: 2501 200039 000, FILTER,LP,2.4GHZ,WIDEBAND,0805 (Soshin HMD804G-T)