

***EXHIBIT C***  
***User Manual***

# **ADSL PCI USER MANUAL**

This document contains confidential information and is proprietary to UAT Inc.  
No part of this document may be reproduced in any form or by any means without the  
prior permission of UAT Inc.

**All specifications are subject to change without notice**

Version: 1.0  
Date:01/17/2000



## Welcome to ADI PCI ADSL Modem !!

Introduce yourself to the new world of fast Internet. UAT provides a whole new fast and simple environment access.

The UAT ADSL board features the following

- ✂✂ Plug and Play PCI 2.1 interface
- ✂✂ Rate Adaptive ADSL technology that adapts to your connection condition
- ✂✂ Receive rates up to 10Mbps (downstream) and transmit rates up to 1Mbps(upstream)

### System Requirement

To use the PCI ADSL Modem, your PC must have:

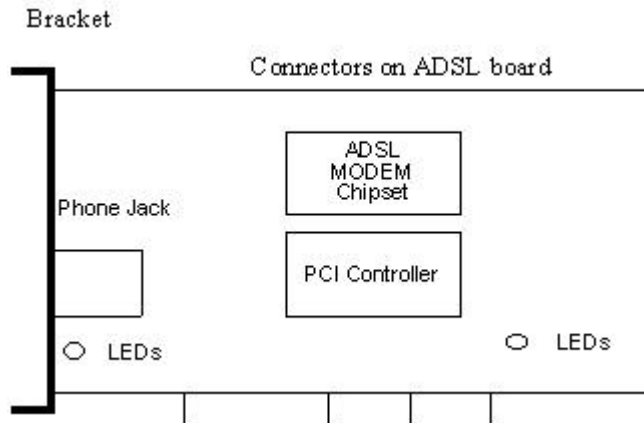
- ✂✂ Pentium 66MHz CPU or faster
- ✂✂ 2MB free space on your hard drive
- ✂✂ 256 color VGA, or higher resolution
- ✂✂ Microsoft NT4 ( with Service Pack 5 or latest) or Microsoft Windows 95/98 or 98 (with latest Service Pack)
- ✂✂ Floppy driver
- ✂✂ CD-ROM drive



## Hardware Installation

Familiarizing yourself with your ADSL Board

Your ADSL board only has one RJ-11 connector for data connection. POTS splitter or microfilters can be plugged outside form the board using multiple port phone jacks.



### Installing the ADSL Board

To install the board

1. Switch off your computer and all the attached devices
2. Touch a metal part of your computer to ground yourself.
3. Remove the computer cover.
4. Locate a free PCI slot on the computer motherboard, remove the metal plate from the slot and put the screw aside
5. Align the ADSL Board with the PCI slot and insert the board as shown
6. Secure the ADSL Board to the PCI slot with the screw which was removed from the metal plate
7. Connect your ADSL Board to your wall's telephone jack which is connected to your ADSL service.
8. Replace the computer's cover
9. Plug the power cord into the power outlet and switch on the computer.



## Driver install for Windows 98

To install UAT PCI device drivers for Windows 98:

1. Start Windows 95/98 on your computer with the PCI board installed
2. Windows 95/98 will open a window called “Add New Hardware Wizard” to indicate that it found a “PCI ATM Controller” board



3. Click “ Next “ then select the bullet next to “Display a list of all the drivers...””



4. Select floppy disk or CD-ROM (recommended), which contains “E:/driver / PCI/ 00-11-23/cpe sw pci lab01/PPPoE/98ME” for windows 98 to install the USB firmware loader. Click on “ Next” to continue.

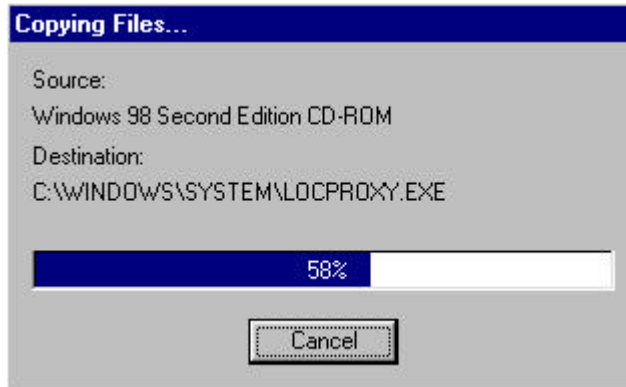
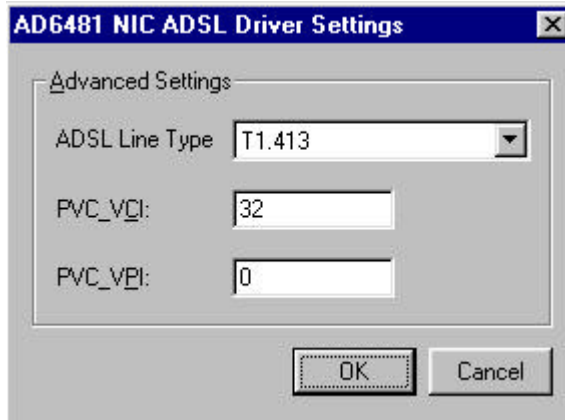


5. Windows 98 detects the ADI PCI ADSL driver. Click on “Next” to continue.





6. Follow the installation dialogs to install the driver.



7. Now restart the computer as the system asks.



### ADIMON PCI User Interface GUI

After the PC being restarted, please check the bottom on the right side for the "ADIMON" icon!



Double click the icon to get the following window. You can check the Line status as well as the line type in this Window.







## Copyright & Regulatory Information

This manual and software described in it are copyrighted with all rights reserved. This manual may not be copied, in whole or in part, without written consent. All product names are trademarks and or registered trademarks of their respective companies.

## FCC Statement

This equipment has been tested and found to comply with the limits for a Class B digital device, pursuant to Part 15 of the FCC Rules. These limits are designed to provide reasonable protection against harmful interference in a residential installation. This equipment generates, uses and can radiate radio frequency energy and, if not installed and used in accordance with the instructions, may cause harmful interference to radio communications. However, there is no guarantee that interference will not occur in a particular installation. If this equipment does cause harmful interference to radio or television reception, which can be determined by turning the equipment off and on, the user is encouraged to try to correct the interference by one or more of the following measure:

- ☞☞ Reorient or relocated the receiving antenna.
- ☞☞ Increase the separation between the equipment and receiver.
- ☞☞ Connect the equipment into a different outlet circuit from than the receiver.
- ☞☞ Consult an experienced radio/TV technician for help.

**CAUTION:** Any changes of modifications not expressly approved by the grantee of this device could void the users authority to operate the equipment.



**UAT Inc.**

2F, No. 5, Alley 22, Lane 513,

Jui Kuang Rd., Nei Hu,

Taipei, Taiwan,

R.O.C

Tel: (886) 2 8797 8488

Fax: (886) 2 2657 0997