
Notice : The changes or modifications not expressly approved by the party responsible for compliance could void the user's authority to operate the equipment.

IMPORTANT NOTE: To comply with the FCC RF exposure compliance requirements, no change to the antenna or the device is permitted. Any change to the antenna or the device could result in the device exceeding the RF exposure requirements and void user's authority to operate the device.

FCC INFORMATION

The Federal Communication Commission Radio Frequency Interference Statement includes the following paragraph:

The equipment has been tested and found to comply with the limits for a Class B Digital Device, pursuant to part 15 of the FCC Rules. These limits are designed to provide reasonable protection against harmful interference in a residential installation. This equipment generates, uses and can radiate radio frequency energy and, if not installed and used in accordance with the instruction, may cause harmful interference to radio communication. However, there is no grantee that interference will not occur in a particular installation. If this equipment does cause harmful interference to radio or television reception, which can be determined by turning the equipment off and on, the user is encouraged to try to correct the interference by one or more of the following measures:

- Increase the separation between the equipment and receiver.
- Connect the equipment into an outlet on a circuit different from that to which the receiver is connected.
- Consult the dealer or an experienced radio/TV technician for help.

Keymark Technology Co., Ltd.

The user should not modify or change this equipment without written approval from **Keymark Technology Co., Ltd.** Modification could void authority to use this equipment.

This device complies with part 15 of the FCC Rules. Operation is subject to the following two conditions:

1. This device may not cause harmful interference.
2. This device must accept any interference received, including interference that may cause undesired operation.

Table of Contents

I.	Introduction	
	Specifications	1
	Accessories	1

II.	Hardware	
	Hardware Installation	2
	Hardware Removal	3
III.	Software	
	Software Installation	3
	Automatic Installation	3
	Password Setting	4
	Product ID Recognition	5
	Software Removal	6
IV.	User Guide	7
V.	Frequently Asked Questions	10
VI.	Technical Support and Service	

Model : **Wireless PC Lock**

Accessories :

1. Transmitter unit × 1 / Receiver unit × 1
2. 3V (CR2032) Battery × 1
3. Driver CD × 1

Function :

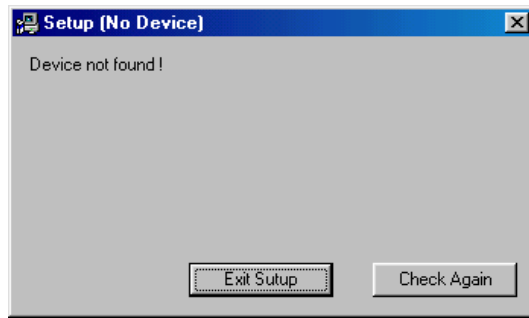
1. The computer automatically enters “Lock Mode” when the user is away from computer by more than 2 meters
2. The computer automatically resumes normal operation when the user is back to within 2 meters range
3. Once the computer enters the “Lock Mode” a password is required to use the computer if the transmitter/receiver pair is not available to unlock the computer
4. One transmitter can be shared with several computers
5. The computer will signal “Warning” when battery voltage of the transmitter is too low

Specifications :

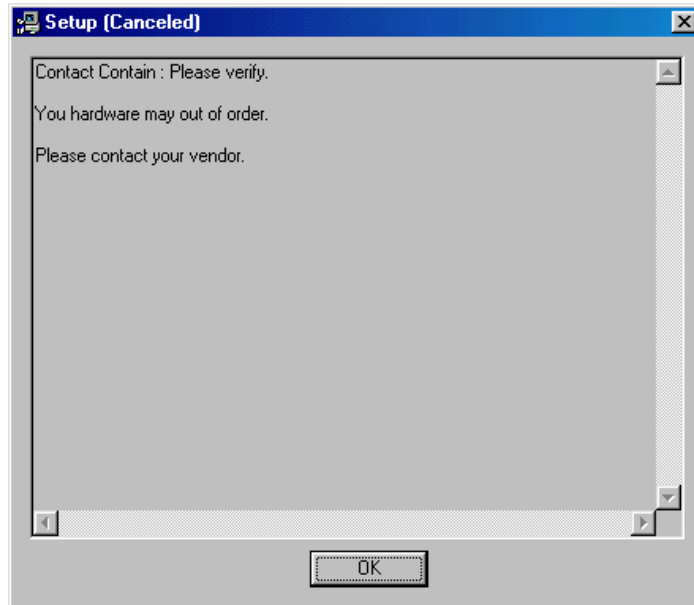
1. One unique “Security Code” in the Transmitter
Computer automatically recognizes the code itself
2. A maximum of 5 sets of “Password” and each set allows maximum of 125 numbers/characters (case insensitive)
3. Operation frequencies: ☐ FCC/315MHz ; ☐ CE/434MHz
4. Transmitter Power Supply: DC 3V
5. Battery Usage: approximately 2000 hours
6. Receiver Power Supply: DC 5V, provided by the computer through USB port
7. Software Driver: support Windows 98 SE / ME / 2000 / XP

Hardware Installation

- A. Insert the Wireless PC Lock receiver into the USB port and the computer will automatically detect and determine if the hardware is properly installed.
- B. If computer fails to detect the receiver device after the hardware installation, the following window will display on the screen. Click the “ Exit ” button and repeat the above step again.



- C. If the following window is displayed on the screen, click the " OK " button to cancel the installation.



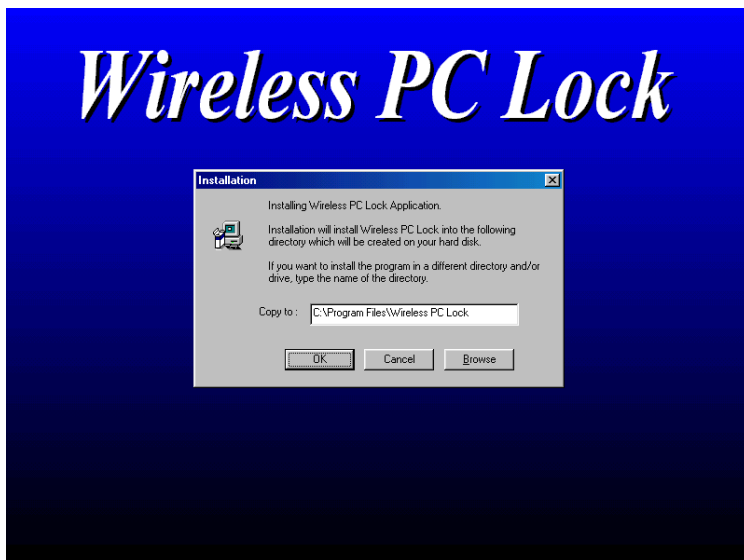
**** Please double check to see if**

- (a) the USB port is fully functional, and
- (b) the Wireless PC Lock receiver is properly inserted into the USB port.

Software Installation

Automatic Installation

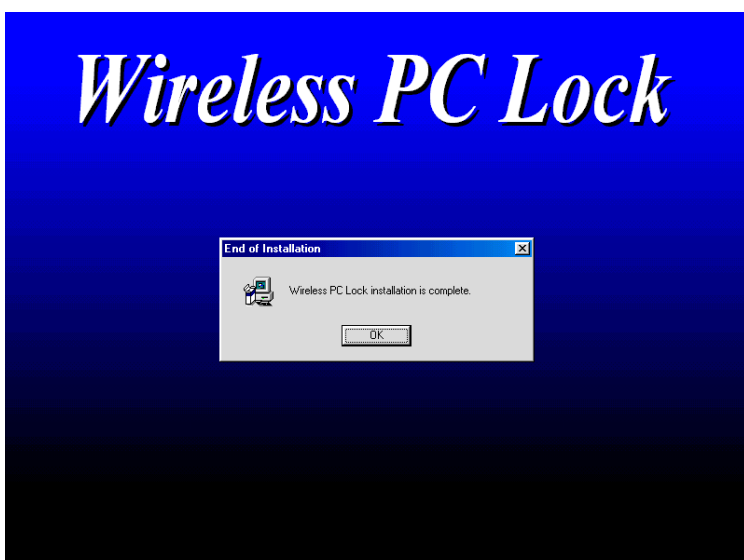
Place the driver software CD which comes with the Wireless PC Lock in the CD-ROM driver and the computer will automatically read and execute the installation program. The computer screen will look similar to the one below. To install the software, simply follow the on-screen instructions. Click the " OK " button to start the installation.



When the software is installing, the computer screen will look similar to the one below.



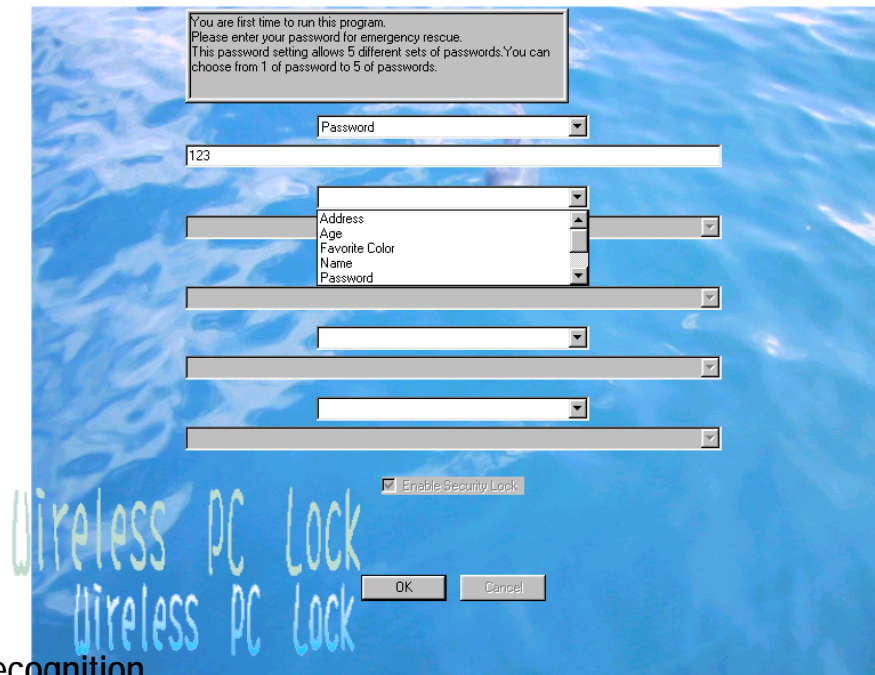
Once the software installation is completed, click the " OK " button.



Password Setting

After the software driver installation is completed, the screen will look similar to the picture below. Please set at least one valid password. The Wireless PC Lock software accommodates a maximum of five (5) sets of passwords with up to 125 alpha-numeric characters in each password. Please note that the alpha-numeric characters in each password are case insensitive.

In the pull-down menu of the password setting screen, you may choose a **Password Reminder** or leave it blank. If a color key is chosen as the **Password Reminder**, please note that only White, Cyan, Red, Magenta, Yellow, Black, Green, and Blue colors are available.

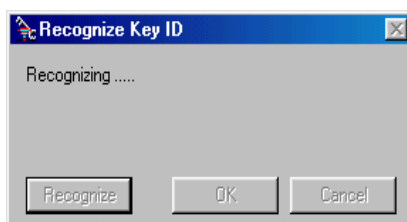


Product ID Recognition

An ID recognize procedure must be completed prior to using the product.

Recognize Procedure:

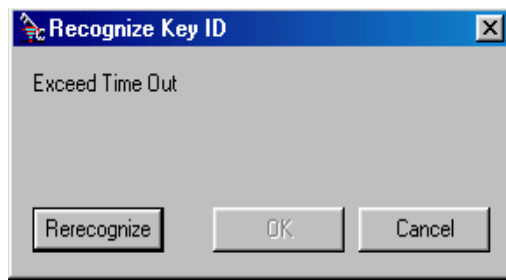
- (a) Please make sure the transmitter is turned off.
- (b). After the password is successfully set, the following window will display on the screen indicating that the recognition is in progress. The transmitter may now be turned on.



- (c) The following pop window indicates that the ID recognize process is complete.



If the time limit is exceeded during the recognition process, a warning window will pop-up as shown in the following illustration. To proceed, click the "Rerecognize" button to retry the recognition right away or the "Cancel" button to try again later.



**** Causes for exceeding time limit:**

1. Transmitter is off
2. More than two transmitters nearby
3. Off air RF interference

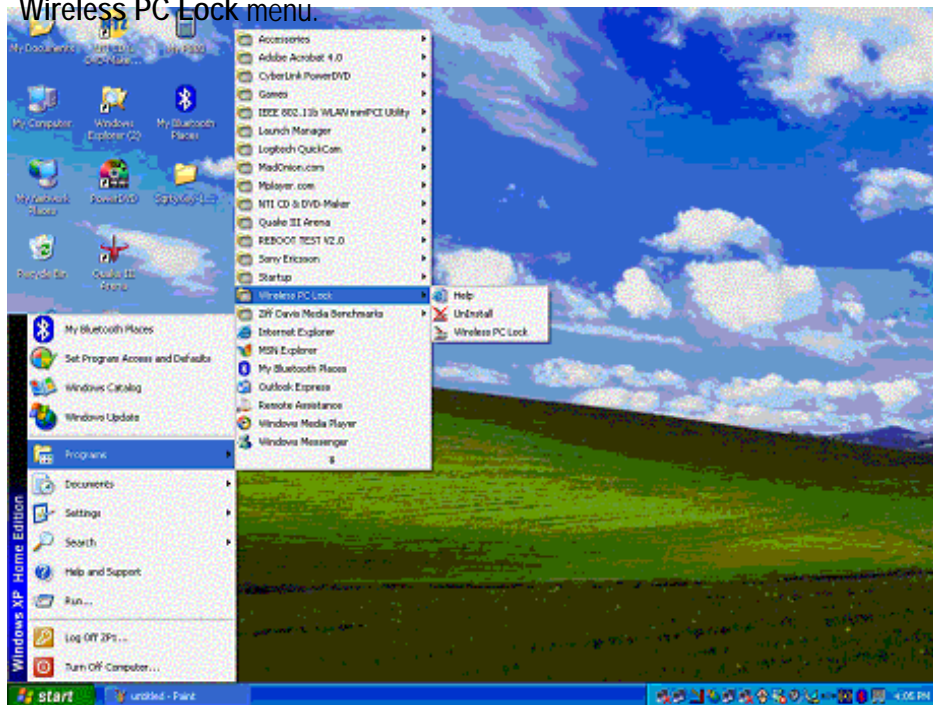
**** Actions:**

Turn on transmitter and make sure its LED blinks
Follow recognize procedure to re-recognize
Move transmitter closer to receiver until receiver's LED blinks

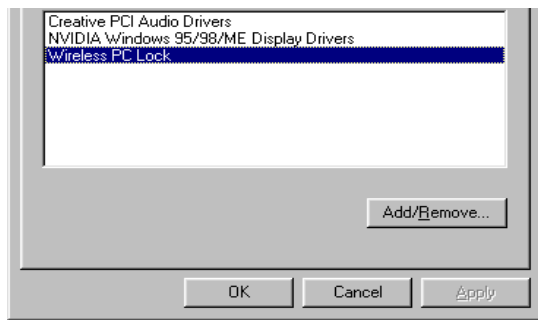
Software Removal

There are two ways to uninstall the Wireless PC Lock software:

1. Click the **Start** button, select the **All Programs** menu button, and then select the **Uninstall** option in the **Wireless PC Lock** menu.



2. Click the **Start** button, select the **Control Panel** menu button, click the **Add or Remove Programs** icon, and then select the **Window PC Lock** program in the **Add/Remove** menu.



User's Guide

1. The following taskbar icon indicates normal operation mode.



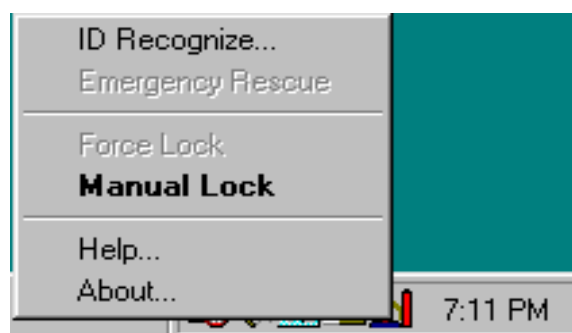
2. The following taskbar icon indicates computer lock-down mode.



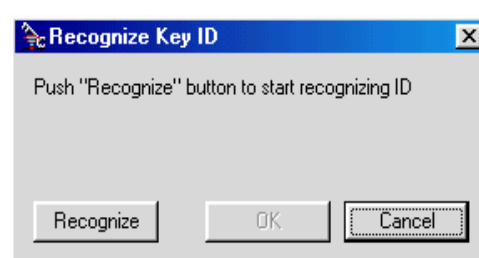
** Lock-down mode :

- a. When the user walks away from the computer beyond the effective distance threshold, The receiver loses the transmitter signal and thus the computer enters lock-down mode.
- b. The transmitter under turn – off status.

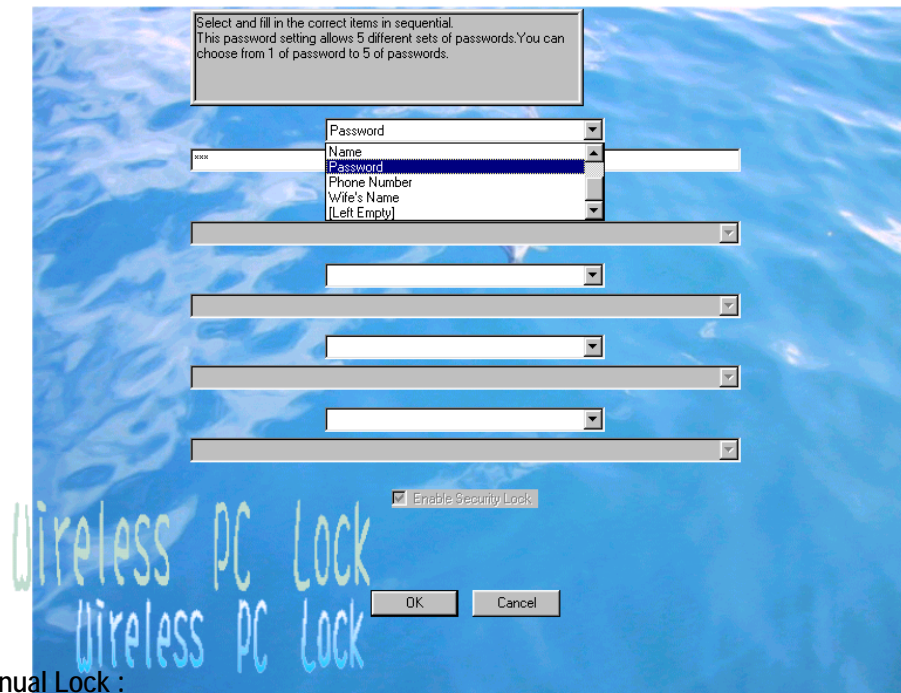
3. Use the right button of mouse to open the context sensitive menu to select the **ID Recognize**, **Emergency Rescue**, **Manual Lock**, **Force Lock**, **Help** and **About** functions.



- a. **ID Recognize** : ID Recognize is required every time a new transmitter is used.



b. Changing Password:



c. Manual Lock :

In any situation, click this button to force the computer to switch to **Lock-down Mode** by a valid password.

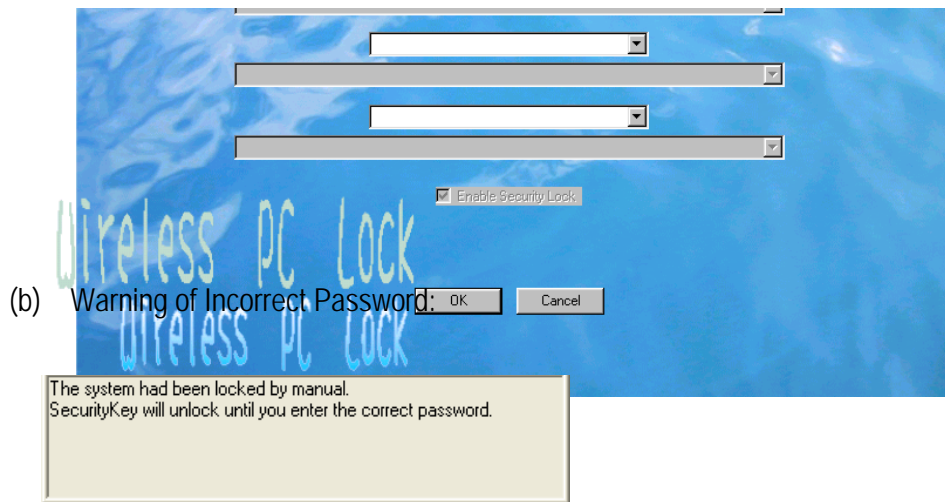
d. Force Lock

- (1). This function forces the computer to enter the **Lock-down Mode** within 10 seconds, ignoring any signal from the transmitter during that period of time.
- (2). A short-cut is shown in the following illustration.
By moving the mouse to the Wireless PC Lock taskbar icon and double-clicking the left mouse button, the Force Lock function is activated.

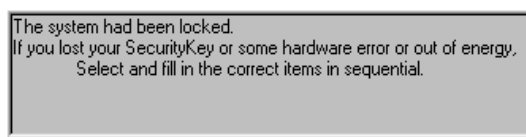


e. Some typical screen displays:

- (a) Normal Mode:



(c) Warning of Missing Hardware:



Frequently Asked Questions

Q1 : Why can the computer not be locked?

A1 : The locking range may be enhanced by electro-magnetic interference in the surrounding area. Use the "Manual Lock" / "Force Lock" / "special function key" to enter **Lock-down Mode** by a valid password.

Q2 : Does the Wireless PC Lock support any computer operation systems ?

A2 : No. The computer operation system must offer USB port support, and this driver support for operation system in Windows 98SE / ME / 2000 / XP. If the computer does not have a USB port, please purchase a USB interface card and Install the card in computer.

Q3 : Can Wireless PC Lock affect or terminate other running software programs?

A3 : No. Although the screen is locked, the other running programs remain unaffected.

Q4 : Can the locking function be activated simply with the installation of the software driver?

A4 : Yes. However, the hardware must first be successfully installed.

Q5 : How many alpha-numeric characters are accepted in the password setting screen?

A5 : 125 characters maximum per password.

Q6 : Why does the battery die so quickly?

A6 : One CR2032 (3V) battery should be able to support 2000 hours of continuous usage.
Due to the self leakage of the battery itself, please pay special attention to the expiration date of the battery itself.

Q7 : Can multiple computers be controlled by a single transmitter?

A7 : Yes, as long as both the receiver hardware and software driver were installed in every computer and the transmitter ID was ratified on each computer.

Q8 : Why does the transmitter unable to control the computer even after the ID recognition has been completed ?

A9 : There may have been more than one ID recognition process on-going during the same time.
Follow the **ID Recognize** procedure and click the " **Rerecognize** " button again.

Notes

- (1) During normal operation, the minimum locking range threshold may be affected by many factors such as nearby metallic material, RF interference, etc..
- (2) Avoid exposing the product to excessive moisture or vibration.