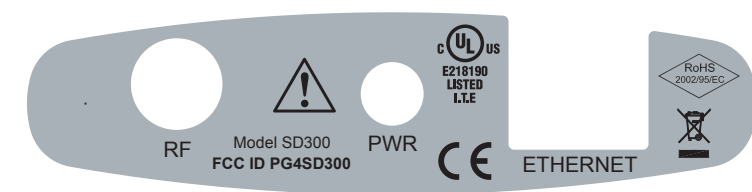
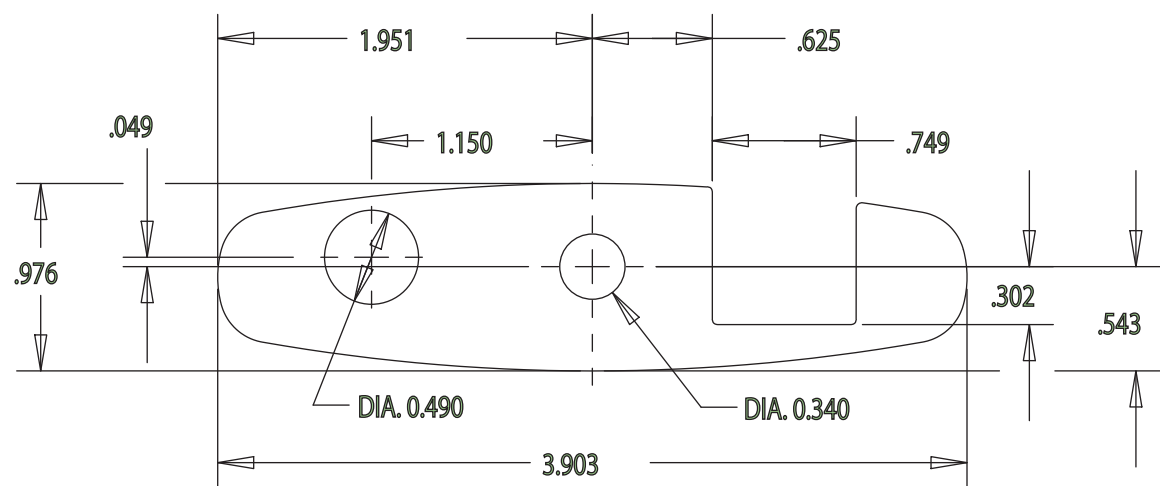


PROPRIETARY
NOTICE

THE CONTENTS OF THIS MATERIAL ARE CONFIDENTIAL AND PROPRIETARY TO ARRIS AND SHOULD NOT BE USED, REPRODUCED, PUBLISHED OR DISCLOSED TO OTHERS WITHOUT THE EXPRESS AUTHORIZATION OF ARRIS INTERNATIONAL, INC. COPYRIGHT ARRIS 2005. ALL RIGHTS RESERVED.

REVISIONS					
ZONE	REV	DESCRIPTION	DATE	REVISED BY	APPROVED BY
	A	RELEASE TO PRODUCTION	4/13/03	JPE	
	B	CHG MATL TO UL LEXAN FR-63	5/28/03		
	C	DELETE MADE IN USA/MEX			
	D	ADD WEE & RoHS SYMBOL	6/11/07	JPE	



408025-001
LABEL, FCC, SD300



NOTES (UNLESS OTHERWISE SPECIFIED):

1. MATERIAL: 0.010" VELVET MATTE FR POLYCARBONATE FILM (GE LEXAN FR-63)
2. ADHESIVE: 3M 9671 OR APPROVED EQUIVALENT WITH RELEASE LINER
3. LABEL BACKGROUND COLOR: PANTONE 429C
4. LABEL TEXT COLOR: PROCESS BLACK

<p>ENGLISH</p> <ul style="list-style-type: none"> UNLESS OTHERWISE SPECIFIED DIMENSIONS ARE INCHES TOLERANCES ARE: DECIMALS ANGLES .XX ±.01 X ±1° .XXX ±.005 INTERPRET DRAWINGS PER ANSI Y14.5M - 1994 AND ARRIS QMS0019 <p>DO NOT SCALE DRAWING</p>	<p>INFORMATION SUBJECT TO CHANGE WITHOUT NOTICE. ANY HARDCOPY OF THIS DOCUMENT IS AN UNCONTROLLED COPY.</p>	<p>3871 LAKEFIELD DR, SUITE 300 SUWANEE, GA 30024-1242</p>
	<p>APPROVALS</p>	<p>TITLE</p> <p>LABEL, FCC, SD300/SD301</p>
	<p>DRAWN J. ERLER</p> <p>CHECKED D. COLLINS</p> <p>APPROVED</p>	<p>SIZE B</p> <p>DWG NO. 408025-000</p> <p>REV D</p>
	<p>THIRD ANGLE PROJECTION</p>	<p>SCALE 1.00</p> <p>SHEET 1 OF 1</p>