

# User's Guide

CREWAVE Wireless LAN USB

(CW-1100USB)

If you want to install a networking system that is not only fast and powerful, but also easy to set up and simple to maintain, it is natural that you should choose a CREWAVE Wireless LAN.

In a short time you and those in your network will be able to share a local printer and files, access the Internet, and roam about the office-wire-free.

Installing CREWAVE Wireless LAN allows the computer to join a wireless network based on the IEEE 802.11b wireless LAN standard.



We are always on-line :

<http://www.crewave.com>

Copyright©2000 CREWAVE CO.,Ltd. All Rights Reserved

## **NOTICE**

The User's Guide described in this book is a licensed product of CREWAVE Co.,Ltd.

- Microsoft MS-Windows and MS-DOS are trademarks of Microsoft Corporation.
- Adobe Acrobat is a registered trademark of Adobe Systems Inc.

All other brand and product names mentioned herein may be trademarks and/or registered trademarks of their respective companies.

This documents was created by CREWAVE Co.,Ltd.

CREWAVE shall not be liable for technical or editorial errors contained herein.

The information in this document reserves the rights to change specifications without prior notice.

<http://www.crewave.com>

Copyright © 2000 CREWAVE Co.,Ltd. All rights reserved.

# **CONTENTS**

## **Information of a Wireless LAN**

- What is a Wireless LAN? .....5
- What is IEEE 802.11? .....5
- Which one should I use? .....6

## **Introduction**

- About CREWAVE Wireless LAN .....8
- . Product Features .....8

## **Installation for Windows**

- Preparation
  - To optimize the performance of WLAN .....9
- Quick Overview .....10
- Hardware Installation .....11
- Device Driver and Software Installation
  - Windows ME/2000/98 .....13

**Configuration Utility** .....17

**Troubleshooting** .....22

**Limited Warranty** .....24

## **INSTALLATION**

### **Preparation**

#### **To achieve optimum performance of your CREWAVE Wireless LAN:**

Evaluate the area in which the network will be arranged and plan the layout accordingly. The key factors in the layout of your CREWAVE Wireless LANs are the evaluated area in which the network will be deployed and plan the layout accordingly. The key factors in the layout of your LANs are the distance between the Access Points and the spatial and structural design of the network area. Test the performance of your infrastructure network by moving the positions of the Access Points. In most buildings, wireless LAN cards maintain a range of 100 to 300 feet. This distance varies depending on the thickness and composition of the walls.

In some situations, you may need to move a computer or add an Access Point in the networked area to achieve optimum performance or range. Consider the following factors when choosing locations for the Access Points:

- Radio waves pass through walls and glass but not through metal. You may find that reinforcing metal in the structure of some concrete walls blocks the signal.
- Open spaces generally provide the best range, but surrounding large metal walls may cause reflections that reduce the data rate.
- Floors typically have steel girders and other metal material that may block radio waves from traveling between floors.

## **Quick Overview**

This chapter describes the installation of the CREWAVE USB Card(CW-1100USB) for Microsoft Windows ME, 98, 2000 only.

### **Note**

The CREWAVE USB Card doesn't support Windows NT, Windows 95 and Windows 3.11.

To install the CREWAVE USB Card :

1. Check kit contents.
2. Insert the CREWAVE Installation CD into the CD-ROM drive and install the CREWAVE USB Configuration Utility.
3. Connect your USB Card to the USB slots of a notebook or desktop PC through the USB cable.
4. Follow the instructions on the screen to install drivers.
5. Consult with Network Administrator, and set Windows Network Properties.

## Hardware Installation

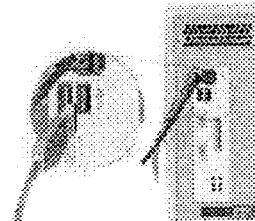
This chapter describes how to connect your CREWAVE 11Mbps Wireless LAN USB (this "CREWAVE USB Card" : CW-1100USB) to the USB slots of your computer through the USB cable.

### **Connect the CREWAVE USB Card to Your Computer**

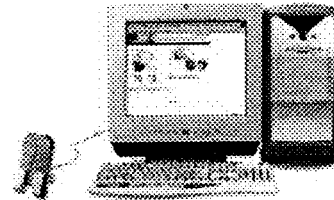
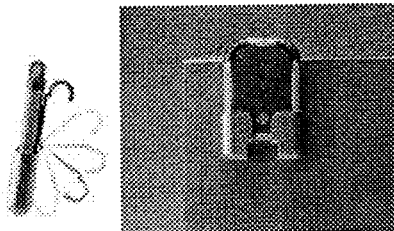
Connect your USB Card to the USB slots of your computer as pictured in figure.



[Notebook]



[Desktop PC]



### **Note**

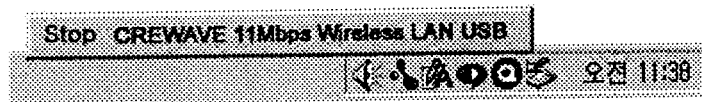
To stop using the CREWAVE 11Mbps Wireless LAN USB (CW-1100USB) in Ms-Windows environments (OS : Windows 2000), proceed as follows:

1. Click the "Start" button on the Windows Taskbar.

2. Click on "Settings" and then "Control Panel" item.
3. On the Control Panel double-click the Card icon to open the PC Card (PCMCIA) properties window.
4. Select the PC Card socket that contains your CREWAVE 11Mbps Wireless LAN USB and click the "Stop" button.
5. Wait for the operating system to acknowledge that the device has been disabled and then remove the USB Card from the USB Card slot.

A shortcut to disable the USB Card is clicking once on the Card icon on the right side of the Windows Task bar, and select the option "Stop CREWAVE 11Mbps Wireless LAN USB".

Double-clicking the Card icon, will open the USB Card properties windows.



## **Device Driver and Software Installation**

### **Installation for Windows ME, 98 and 2000**

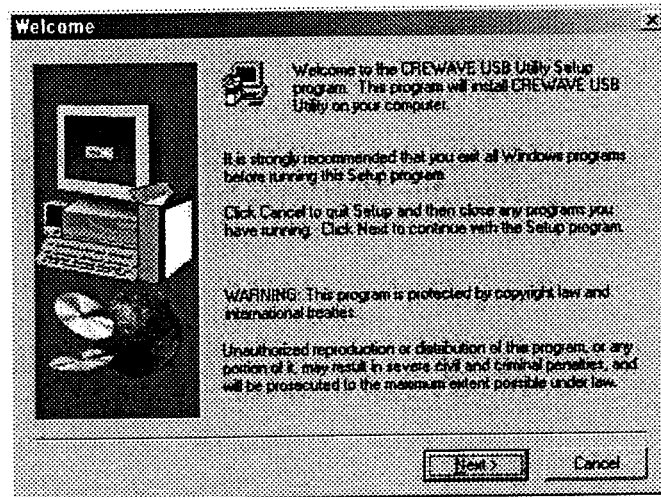
**: Include CREWAVE USB Configuration Utility**

To install the CREWAVE 11Mbps Wireless LAN USB(this "CREWAVE USB Card : CW-1100USB)" on a compute running both Windows ME, 98 and 2000, please follow the procedure as follows.

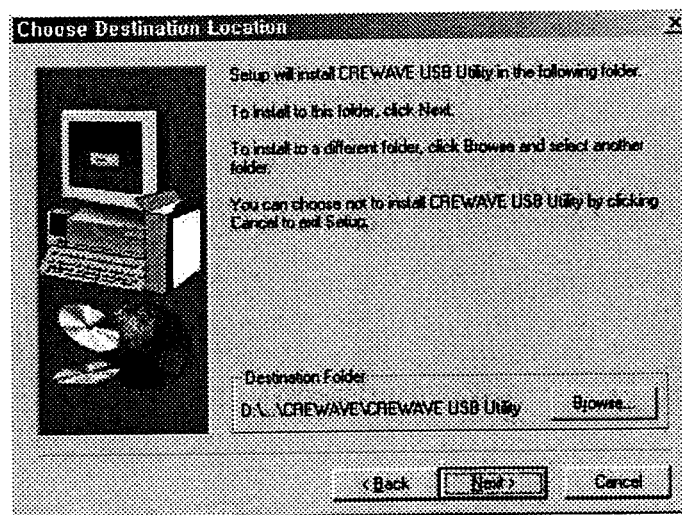
**First.**

1. Power on your computer.
2. Exit all windows programs and insert the Installation CD into the CD-ROM drive of your computer.
3. Click "**USB CARD (CW-1100USB)**" button, and the Installation CD automatically will run a Setup program corresponds with your Operating systems.
4. Click "**OK**", and the **Welcome** dialog box displays.

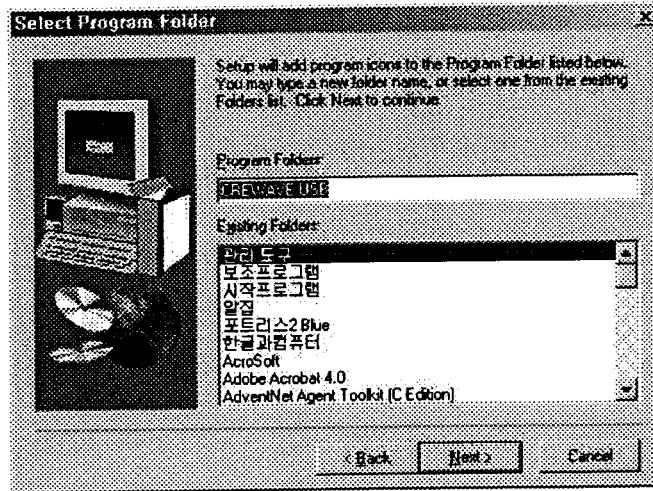




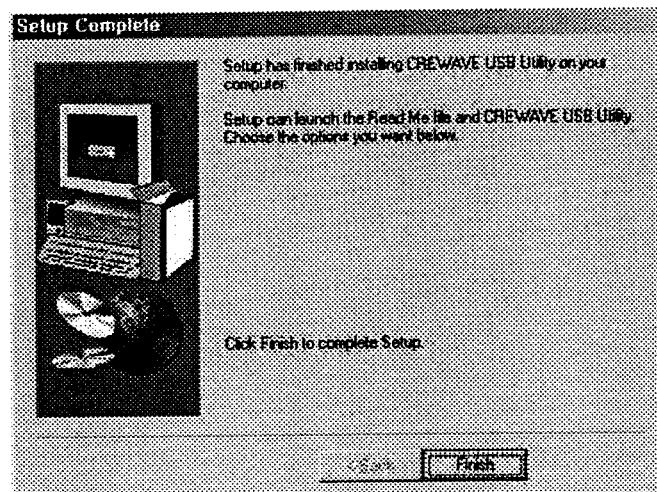
5. You can select another folder, which is where you want to install CREWAVE USB Utility in **Choose Destination Location** dialog box.



6. Click the Next button after you select a suitable name and list. Setup will add program icons to the Program Folder listed below. You may type a new folder name, or select one from the existing Folder list.



7. Windows Setup automatically will copy files and install the utility files, then click on Finish to complete the installation.

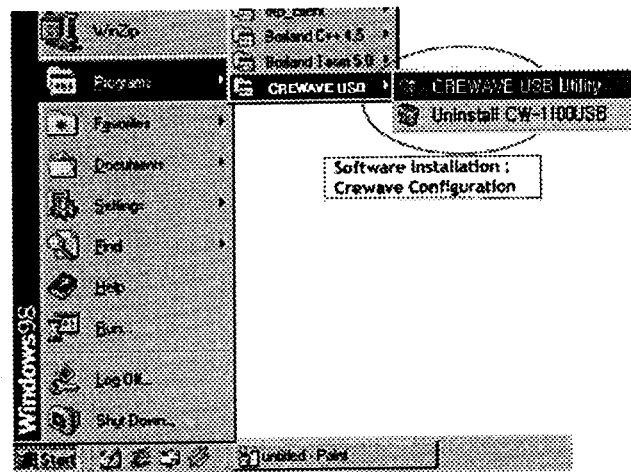


**Second.**

1. After the software is installed, connect the CREWAVE USB Card to an available USB CARD slot.
2. Windows ME, 98 and 2000 operating systems may detect the new hardware. Operating systems automatically will build database.
3. Move into 'My Computer' using the mouse. After click right button, select the Device manager and then Network Adapters. If you see the Yellow sign of Question-mark(?), the resources are conflicting.(Refer to the 'Troubleshooting' to solve the problem)
4. If there are nothing wrong, select Properties from the pop up menu, after right click on the Network Neighborhood.
5. Click the Network Configuration tab and then select what you want to add. (Consult with Network Administrator for normal Network)
6. A System Settings Change dialog box displays and request to restart the computer, click 'Yes' to accept.

## CONFIGURATION

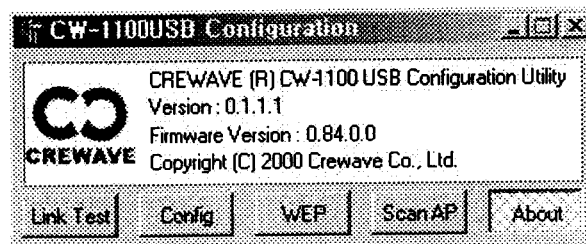
During the installation of your CREWAVE 11Mbps Wireless LAN USB(CW-1100USB), Configuration Utility is also installed. You can see the icon(CREWAVE USB Utility) on Start button. Clicking on that icon will show you the screen as shown below.



We will explain meanings of the various screen messages.

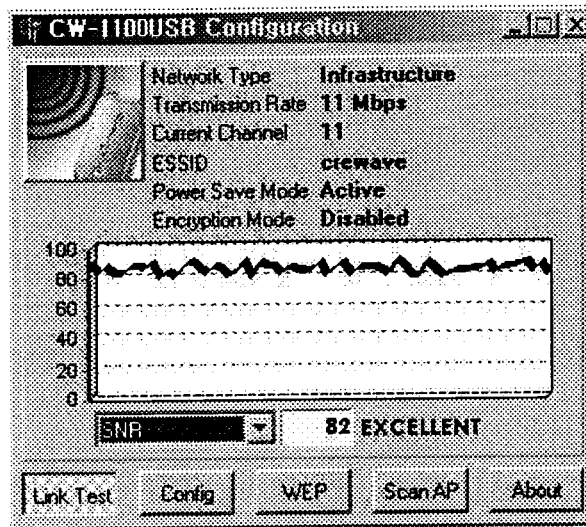
### - About

About tab show the basic default of CREWAVE Wireless LAN currently in use.



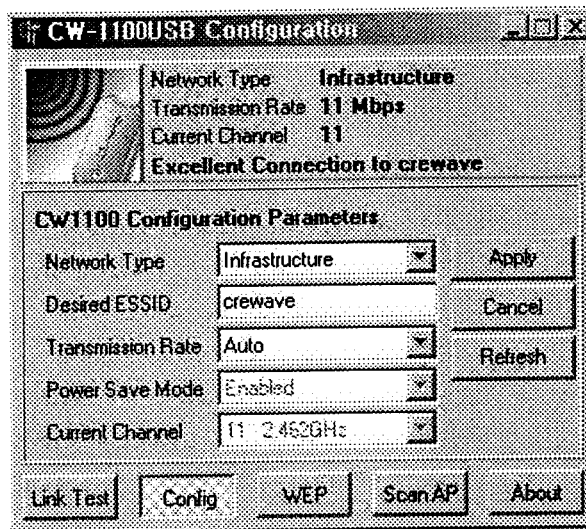
## Link Test

Link Test explains the properties of the channel currently in use. It also explains whether the link between the two communicating client or a client and an AP is *excellent, good, adequate or poor*.



## Configuration

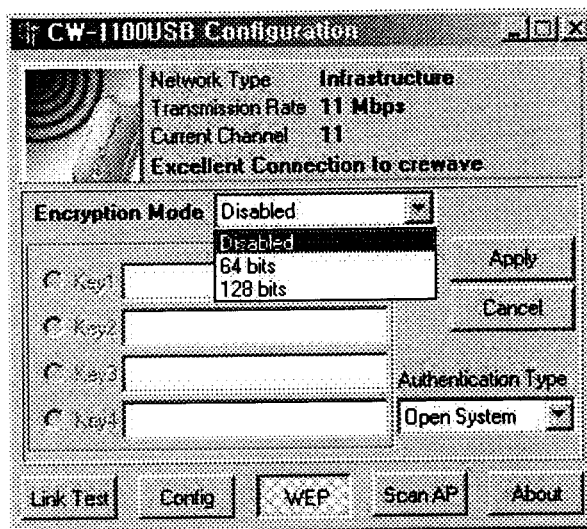
You can change the CREWAVE USB Configuration Utility for the suitable setting. After changing the settings in the Configuration Dialog box, click on Apply button. It takes a few seconds to set the changes that you made.



- Network Type : This describes the type of network that a client is connected. The choice is between Infrastructure and Ad-hoc modes.
- SSID(Service Set Identifier) : A Network ID unique to a network. Only clients and Access Point(AP) that share the same SSID are able to communicate with each other.
- Current Channel : Specifies the default channel(802.11b). You can change the channel number.
- Power Save Mode : You can save an electric power by this function as do not networking. (Currently, the Power Save Mode is disabled.)
- Transmission Rate : The transmission rate at which the data packets are transmitted by the client or AP.

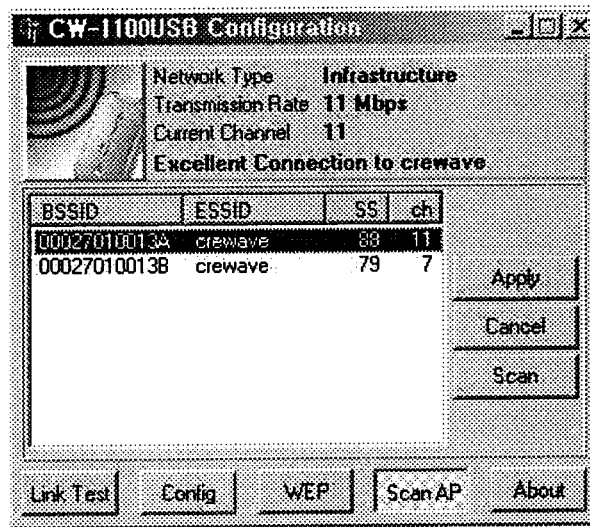
- Encryption (WEP Key)

Encryption is a WEP(Wired Equivalent Privacy) scheme that provides the secure wireless data communications to the users. Encryption uses a 40bits key to control the network access. In order to decode the data transmission, each wireless client on the network must use the identical 40bits key.



- **Authentication Type** : Select Open System or Shared Key Authentication Type.
  - . **Open System** : With this setting any station in the WLAN can associate with an Access Point and receive and transmit data(null authentication)
  - . **Shared Key** : With this setting only stations using a shared key encryption identified by the Access Point are allowed to associate with it.

- Scan AP





## TROUBLESHOOTING

This chapter lists problems you may encounter and possible solutions during the installation of your Wireless LAN USB (CW-1100USB).

Symptom	Diagnosis/Remedy
If you can't connect to one of the clients in the Network Neighborhood.	<p>&lt;Network Neighborhood&gt;</p> <ul style="list-style-type: none"> <li>- Make sure your TCP/IP setup is correct in the Network Properties</li> <li>- Make it sure that your workgroup have the same name with another clients.</li> <li>- Make sure you are within range of an Access Point or client.</li> </ul> <p>&lt;Generic&gt;</p> <ul style="list-style-type: none"> <li>- Make it sure that all clients have the same SSID in the CREWAVE Configuration and Access Point (AP) set is correctly.</li> </ul>
If you find the Yellow sign of Question-mark(?) on the adapter or USB Card socket status of the USB Card Controller.	<ul style="list-style-type: none"> <li>- It shows the installation is not successful. Select the adapter and click on Remove. Restart your computer after uninstallshield.</li> <li>- Check if your computer has a free IRQ. If not, make an IRQ free by assigning the same RQ to some devices, for example COM1, COM2 can be assigned same IRQ values.</li> </ul>
LEDs of CREWAVE WLAN USB Card blinking.	<ul style="list-style-type: none"> <li>- CREWAVE WLAN Card works fine, but did not yet succeed establishing a wireless connection with the wireless infrastructure.</li> <li>- Make sure you are within range of an</li> </ul>

	<p><b>Access Point.</b></p> <ul style="list-style-type: none"><li>- Make sure SSID is set properly and correctly. (In the same, identify your AP set)</li><li>- Make sure a resource is shared on every computer in the network.</li></ul>
--	--

## Limited Warranty

CREWAVE Co.,Ltd

F7,Pureun Bldg.28-1, Jamwon-dong, Seocho-gu, Seoul, Korea

TEL : 82-2-517-1797

FAX : 82-2-518-8518

<http://www.crewave.com>

CREWAVE warrants that the CREWAVE Wireless LAN, if properly used and installed, will be free from defects in material and workmanship and will substantially conform to CREWAVEs publicly available specifications for a period of one years after it was purchased.

**CREWAVE Wireless LAN is covered by a One(1) Year Limited Warranty.**

Warranty remedies, at CREWAVEs option, to repair, replacement, or refund.

### **EXTENT OF LIMITED WARRANTY**

This Limited Warranty entitles you, the original purchaser, to the benefits listed in the CREWAVE Limited Warranty Statements from the date of purchase from a CREWAVE Authorized Reseller.

This limited warranty does not cover damages due to external causes, including accident, problems with electrical power, usage not in accordance with product instructions, misuse, neglect, alteration, repair, improper installation, or improper testing. CREWAVE is not responsible for incidental or consequential damages resulting from any breach of warranty, including but not limited to lost profits, downtime, damage to or replacement of equipment or property.

All CREWAVE products are covered only by the CREWAVE Limited Warranty in the country in which they were purchased. Service for your CREWAVE product in a country other than the one in which it was purchased is available from any CREWAVE Authorized Service Provider in the country concerned, and the full cost of any service obtained(including parts) must be borne by you.

**NOTICE**

CREWAVEs responsibility under this, or any other warranty, implied or express, is limited to repair, replacement or refund, as set forth above. These remedies are the sole and exclusive remedies for any breach of warranty. All implied and express warranties are limited in duration to the limited warranty period. No warranties apply after that period.

To obtain warranty service for your CREWAVE products, you may contact CREWAVE Authorized Service Provider, or you may contact CREWAVE.