

## **APPENDIX A – SAR TEST PLOTS**

---

# Peak SAR Location

---

## Body SAR



File : c:/idx3/SYSTEM/SARMEAS3/data/Normal/00122802\_ZOOM.VLT  
Start : 28-Dec-100 10:38:08 am End : 28-Dec-100 10:50:00 am

Radio Type : CREWAVE  
Model Number : CW-1100  
Serial Number : 1  
Frequency : 2412 MHz  
Peak Trans. Pwr : 0.100 W  
Start Trans. Pwr : 0.100 W  
Antenna Type : Helical  
Antenna Posn. : Internal  
Phantom Type : Body  
Phantom Posn. : Abdomen  
Scan Type : ZOOM/SAR  
Probe Name : PCTEST  
Field Type : E Field  
Orientation : 0 Degrees

Mixture Type = Muscle  
Mixture Dielectric Constant = 52.200  
Mixture Conductivity = 2.850

Comment :  
CREWAVE WIRELESS DSS LAN  
CHANNEL 01  
CREWAVE WIRELESS DSS LAN

Robot : PCTEST

Probe Offset = 0.25 cm  
Sensor Factor = 0.0108  
Conversion Factor = 0.983

PCTEST Amplifier Channel Settings : 0.172 0.187 0.220

Max Location : X = -0.750, Y = 0.500, Z = 0.000 (cm) Value = 7.756

Measured Values (volts) =  
6.836E-003 4.817E-003 2.811E-003 2.019E-003 1.456E-003 1.106E-003  
9.056E-004 7.698E-004 7.583E-004 6.059E-004 6.067E-004 6.709E-004  
7.242E-004 6.306E-004 6.445E-004 6.273E-004 6.359E-004 5.792E-004  
6.282E-004 6.765E-004 6.021E-004

Calc. Voltage @ Surface (Vs) = 0.0107

Voltage @ 1.00 cm (Vt) = 0.0020

Ave. Voltage (Vs+Vt)/2 = 0.0064

Ave. SAR over 1 g (mW/g) = 0.5792

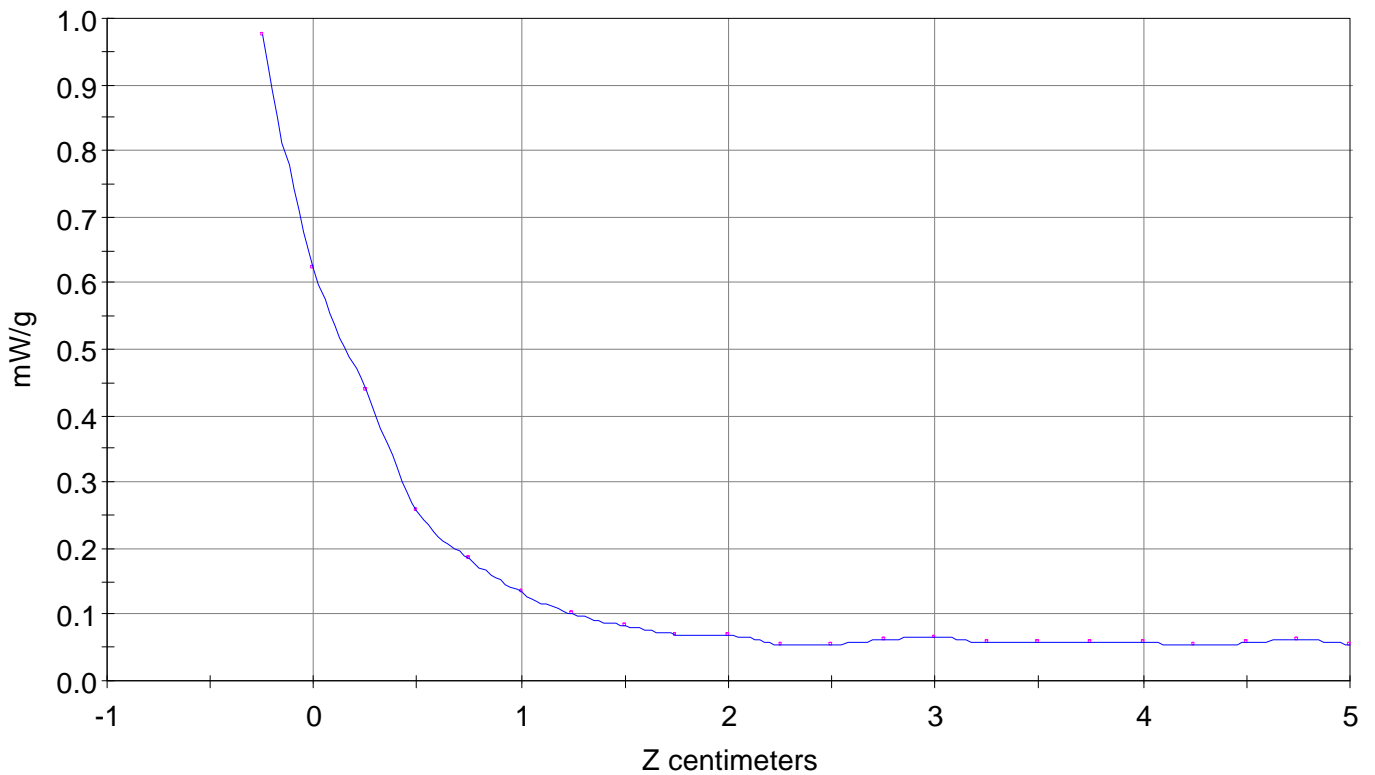
# SAR Scan

File : 00122802\_ZOOM

Start : 28-Dec-100 10:38:08 am End : 28-Dec-100 10:50:00 am

CREWAVE/CW-1100/1;2412MHz;W;Helical/Internal;

Body/Abdomen;ZOOM/SAR;PCTEST/E Field/0 DegreesMuscle/52.200/2.850

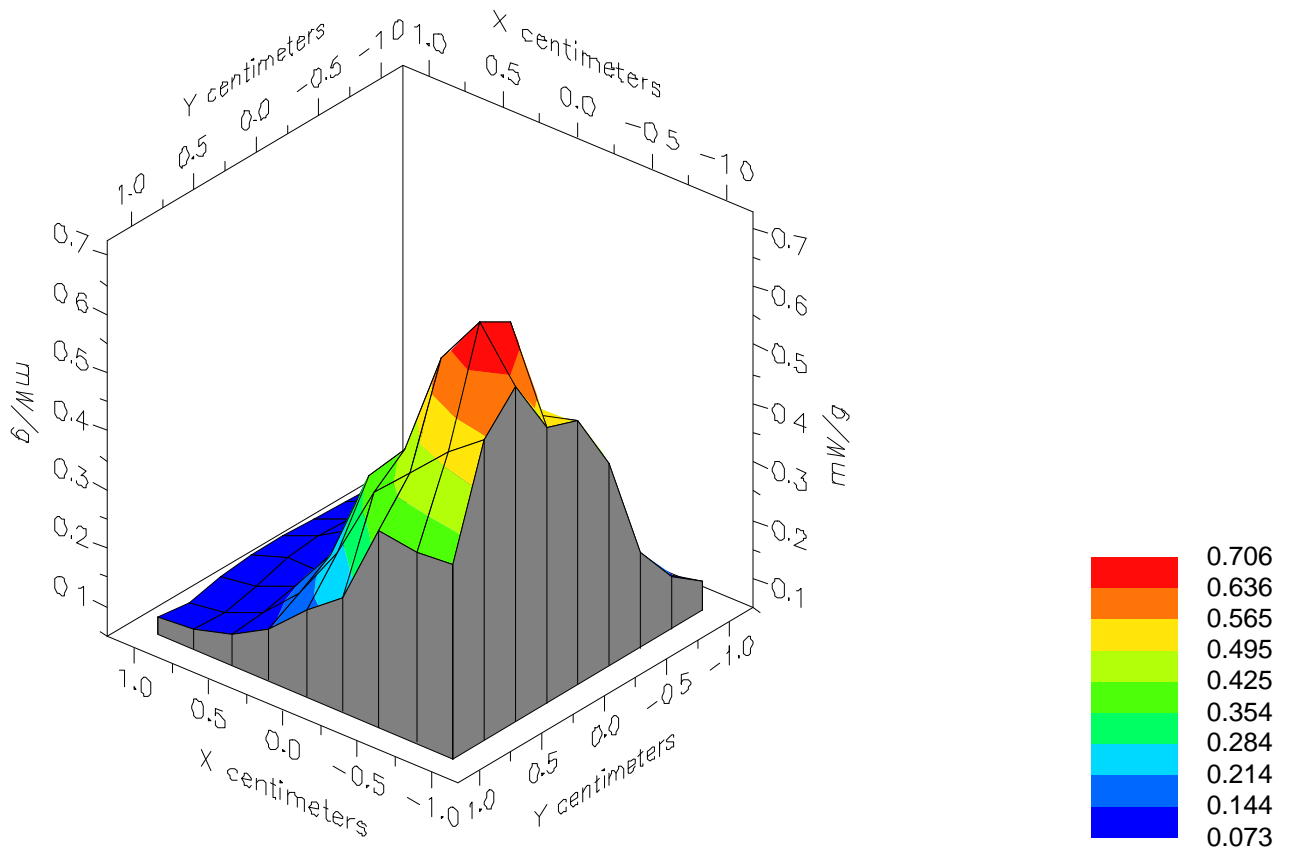


File : 00122802\_ZOOM

Start : 28-Dec-100 10:38:08 am End : 28-Dec-100 10:50:00 am

CREWAVE/CW-1100/1;2412MHz;W;Helical/Internal;

Body/Abdomen;ZOOM/SAR;PCTEST/E Field/0 DegreesMuscle/52.200/2.850

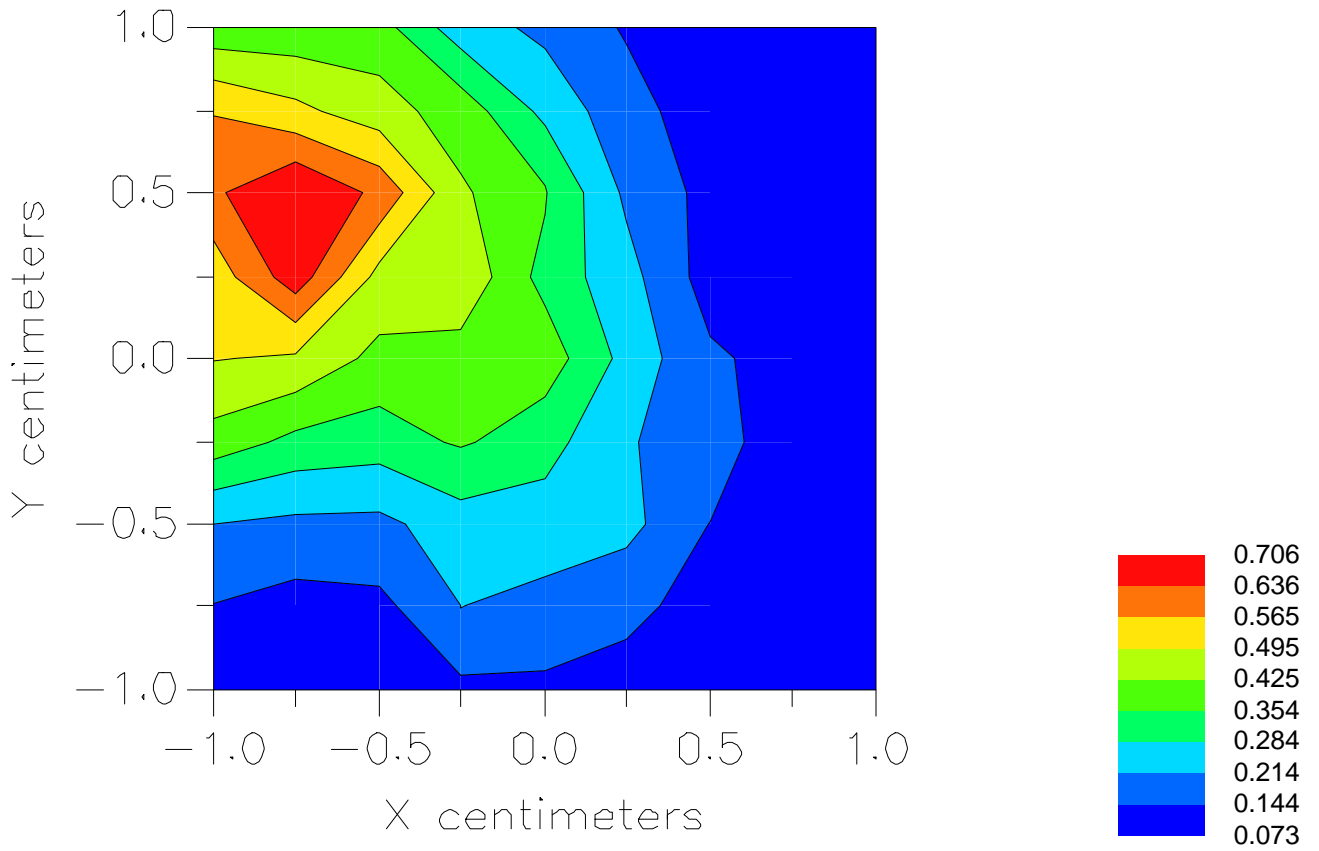


File : 00122802\_ZOOM

Start : 28-Dec-100 10:38:08 am End : 28-Dec-100 10:50:00 am

CREWAVE/CW-1100/1;2412MHz;W;Helical/Internal;

Body/Abdomen;ZOOM/SAR;PCTEST/E Field/0 DegreesMuscle/52.200/2.850



File : c:/idx3/SYSTEM/SARMEAS3/data/Normal/00122803\_ZOOM.VLT  
Start : 28-Dec-100 11:00:58 am End : 28-Dec-100 11:08:32 am

Radio Type : CREWAVE  
Model Number : CW-1100  
Serial Number : 1  
Frequency : 2442 MHz  
Peak Trans. Pwr : 0.100 W  
Start Trans. Pwr : 0.100 W  
Antenna Type : Helical  
Antenna Posn. : Internal  
Phantom Type : Body  
Phantom Posn. : Abdomen  
Scan Type : ZOOM/SAR  
Probe Name : PCTEST  
Field Type : E Field  
Orientation : 0 Degrees

Mixture Type = Muscle  
Mixture Dielectric Constant = 52.200  
Mixture Conductivity = 2.850

Comment :  
CREWAVE WIRELESS DSS LAN  
CHANNEL 07  
CREWAVE WIRELESS DSS LAN

Robot : PCTEST

Probe Offset = 0.25 cm  
Sensor Factor = 0.0108  
Conversion Factor = 0.983

PCTEST Amplifier Channel Settings : 0.172 0.187 0.220

Max Location : X = 0.000, Y = 0.750, Z = 0.000 (cm) Value = 9.752

Measured Values (volts) =  
7.676E-003 4.782E-003 3.083E-003 2.191E-003 1.671E-003 1.255E-003  
1.085E-003 9.150E-004 8.194E-004 7.583E-004 7.963E-004 7.424E-004  
7.230E-004 6.548E-004 6.779E-004 6.612E-004 7.822E-004 7.248E-004  
7.370E-004 6.566E-004 6.405E-004

Calc. Voltage @ Surface (Vs) = 0.0121

Voltage @ 1.00 cm (Vt) = 0.0022

Ave. Voltage (Vs+Vt)/2 = 0.0072

Ave. SAR over 1 g (mW/g) = 0.6510

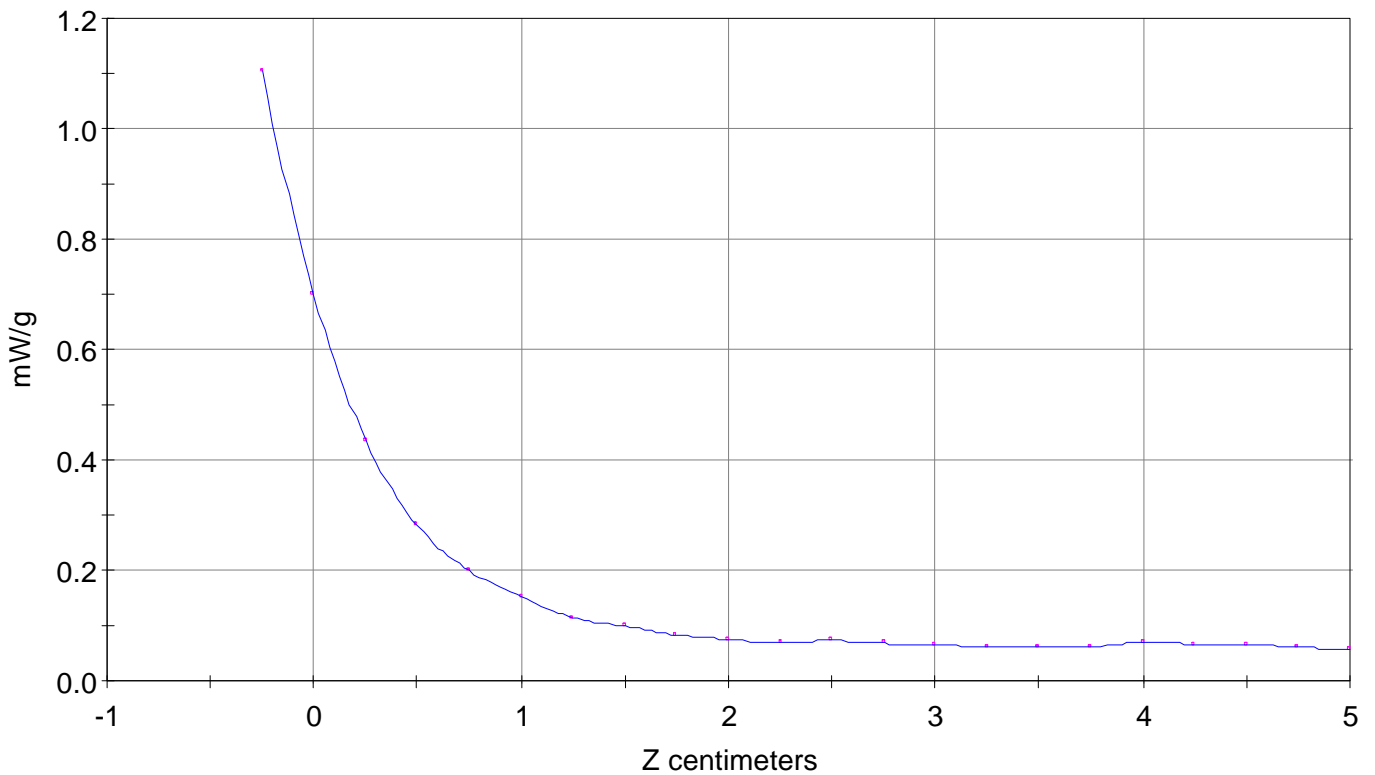
### SAR Scan

File : 00122803\_ZOOM

Start : 28-Dec-100 11:00:58 am End : 28-Dec-100 11:08:32 am

CREWAVE/CW-1100/1;2442MHz;W;Helical/Internal;

Body/Abdomen;ZOOM/SAR;PCTEST/E Field/0 DegreesMuscle/52.200/2.850



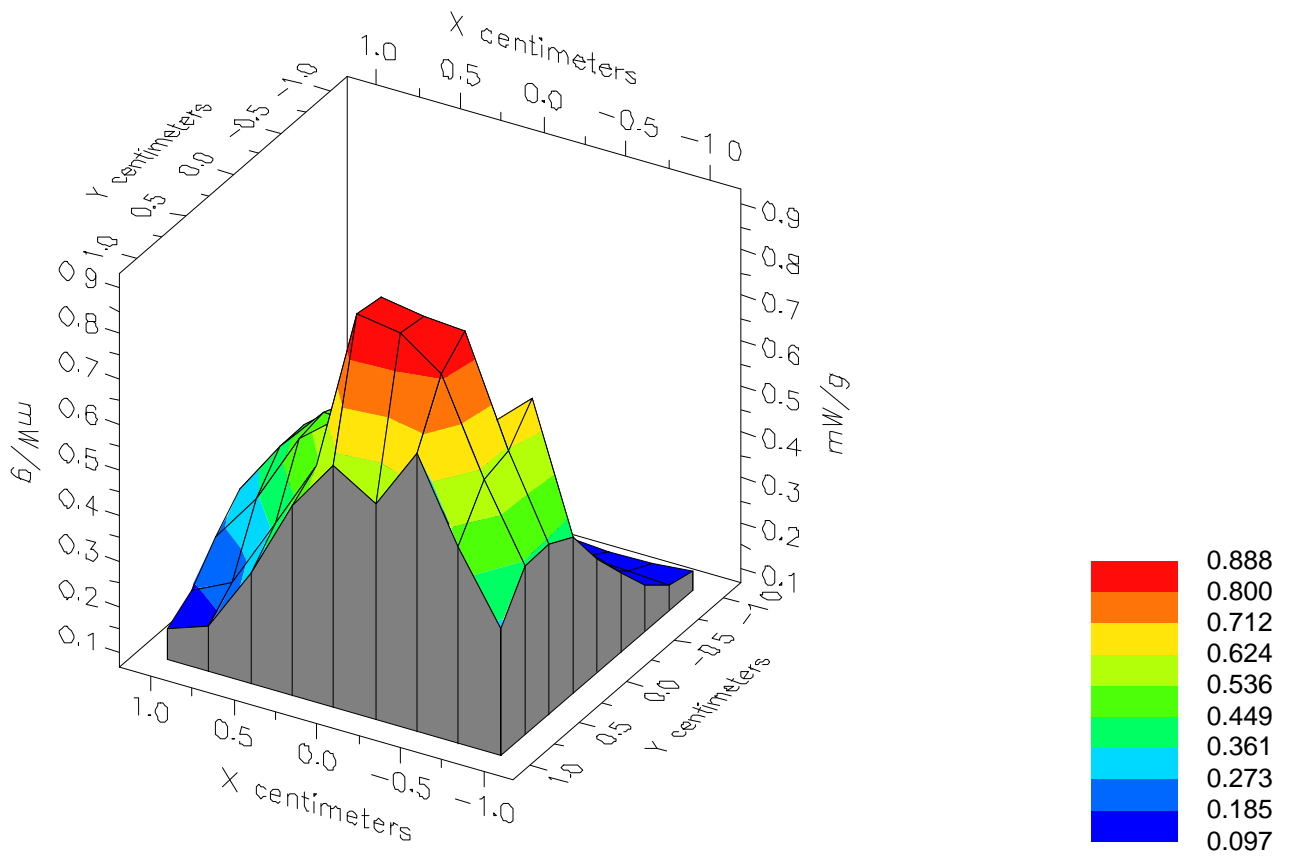


File : 00122803\_ZOOM

Start : 28-Dec-100 11:00:58 am End : 28-Dec-100 11:08:32 am

CREWAVE/CW-1100/1;2442MHz;W;Helical/Internal;

Body/Abdomen;ZOOM/SAR;PCTEST/E Field/0 DegreesMuscle/52.200/2.850

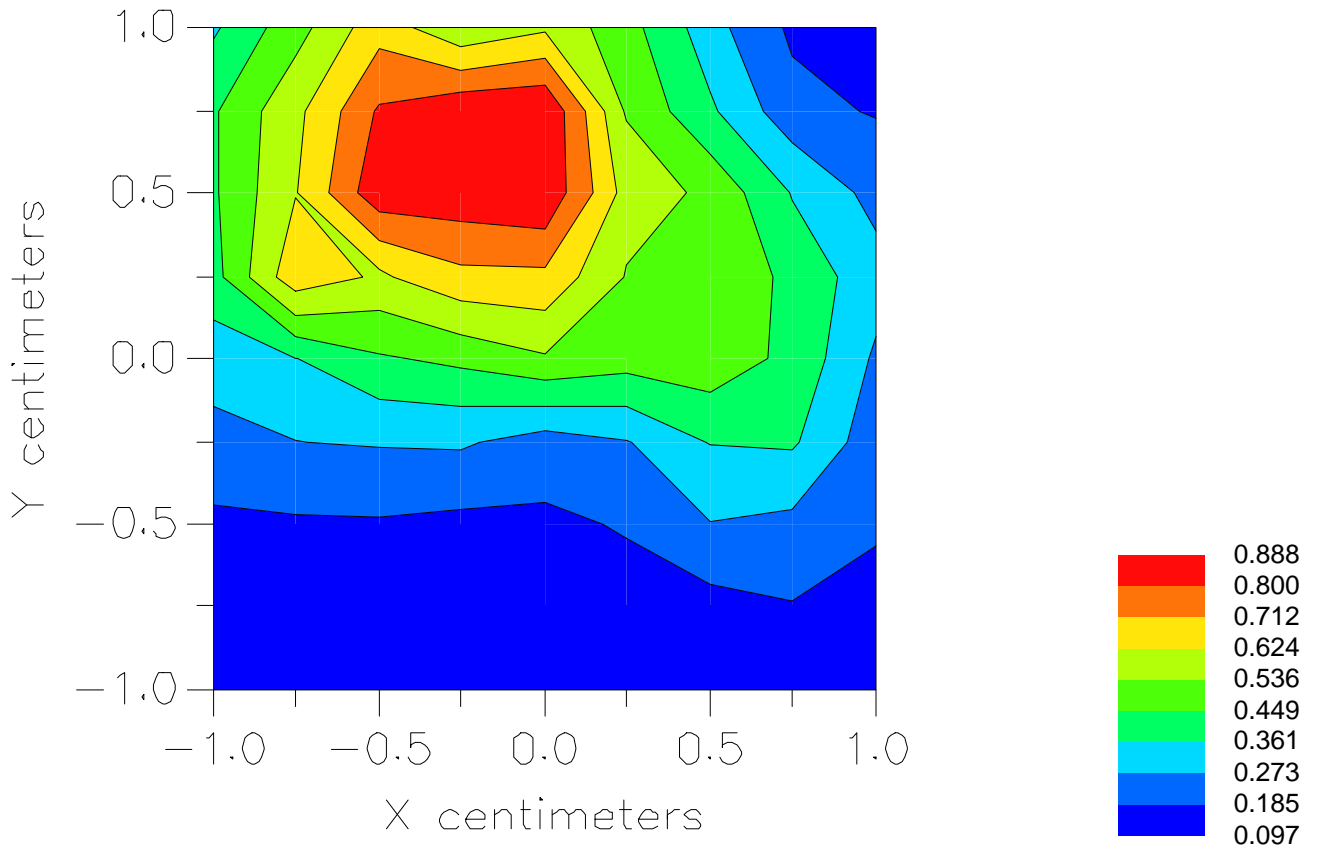


File : 00122803\_ZOOM

Start : 28-Dec-100 11:00:58 am End : 28-Dec-100 11:08:32 am

CREWAVE/CW-1100/1;2442MHz;W;Helical/Internal;

Body/Abdomen;ZOOM/SAR;PCTEST/E Field/0 DegreesMuscle/52.200/2.850



File : c:/idx3/SYSTEM/SARMEAS3/data/Normal/00122804\_ZOOM.VLT  
Start : 28-Dec-100 11:22:48 am End : 28-Dec-100 11:30:22 am

Radio Type : CREWAVE  
Model Number : CW-1100  
Serial Number : 1  
Frequency : 2472 MHz  
Peak Trans. Pwr : 0.100 W  
Start Trans. Pwr : 0.100 W  
Antenna Type : Helical  
Antenna Posn. : Internal  
Phantom Type : Body  
Phantom Posn. : Abdomen  
Scan Type : ZOOM/SAR  
Probe Name : PCTEST  
Field Type : E Field  
Orientation : 0 Degrees

Mixture Type = Muscle  
Mixture Dielectric Constant = 52.200  
Mixture Conductivity = 2.850

Comment :  
CREWAVE WIRELESS DSS LAN  
CHANNEL 13  
CREWAVE WIRELESS DSS LAN

Robot : PCTEST

Probe Offset = 0.25 cm  
Sensor Factor = 0.0108  
Conversion Factor = 0.983

PCTEST Amplifier Channel Settings : 0.172 0.187 0.220

Max Location : X = -0.250, Y = 0.250, Z = 0.000 (cm) Value = 5.577

Measured Values (volts) =  
4.777E-003 3.491E-003 2.232E-003 1.559E-003 1.245E-003 1.013E-003  
8.009E-004 7.886E-004 7.945E-004 7.724E-004 7.143E-004 6.746E-004  
6.766E-004 5.961E-004 6.223E-004 6.396E-004 6.985E-004 6.550E-004  
6.081E-004 5.749E-004 6.252E-004

Calc. Voltage @ Surface (Vs) = 0.0070

Voltage @ 1.00 cm (Vt) = 0.0016

Ave. Voltage (Vs+Vt)/2 = 0.0043

Ave. SAR over 1 g (mW/g) = 0.3897

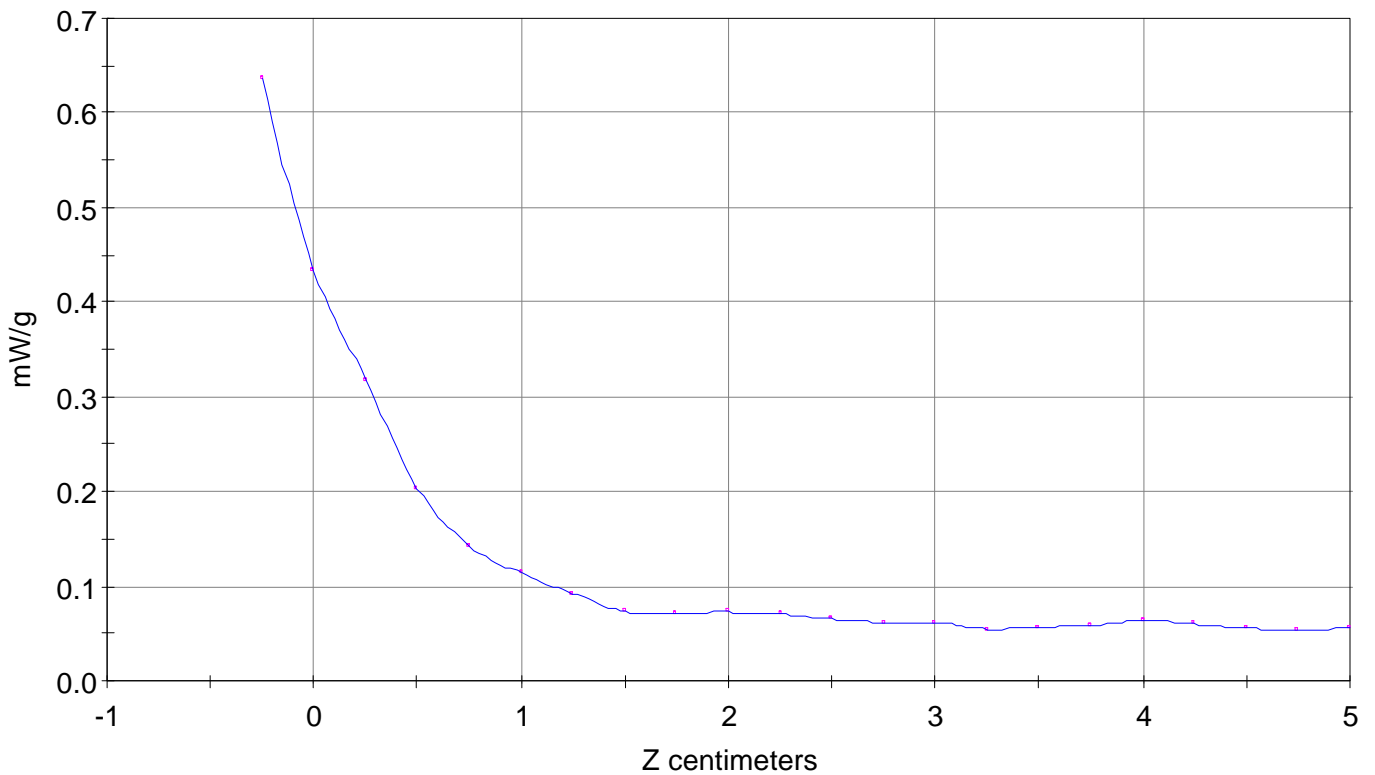
### SAR Scan

File : 00122804\_ZOOM

Start : 28-Dec-100 11:22:48 am End : 28-Dec-100 11:30:22 am

CREWAVE/CW-1100/1;2472MHz;W;Helical/Internal;

Body/Abdomen;ZOOM/SAR;PCTEST/E Field/0 DegreesMuscle/52.200/2.850

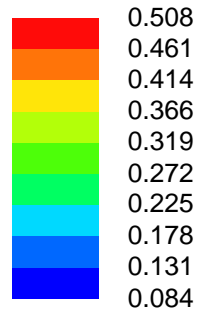
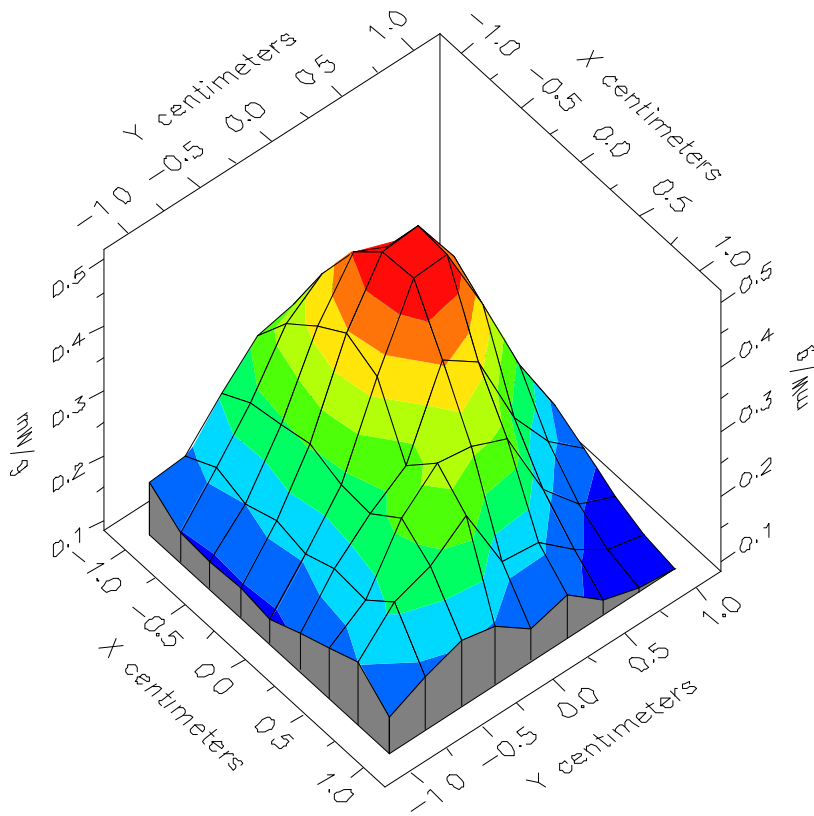


File : 00122804\_ZOOM

Start : 28-Dec-100 11:22:48 am End : 28-Dec-100 11:30:22 am

CREWAVE/CW-1100/1;2472MHz;W;Helical/Internal;

Body/Abdomen;ZOOM/SAR;PCTEST/E Field/0 DegreesMuscle/52.200/2.850



File : 00122804\_ZOOM

Start : 28-Dec-100 11:22:48 am End : 28-Dec-100 11:30:22 am

CREWAVE/CW-1100/1;2472MHz;W;Helical/Internal;

Body/Abdomen;ZOOM/SAR;PCTEST/E Field/0 DegreesMuscle/52.200/2.850

