

KCTL Inc.

65, Sinwon-ro, Yeongtong-gu,
Suwon-si, Gyeonggi-do, 16677, Korea
Tel : 82-31-285-0894 Fax : 82-505-299-8311
www.kctl.co.kr

Report No.:
KR17-SPF0004-D

Page (91) of (95)

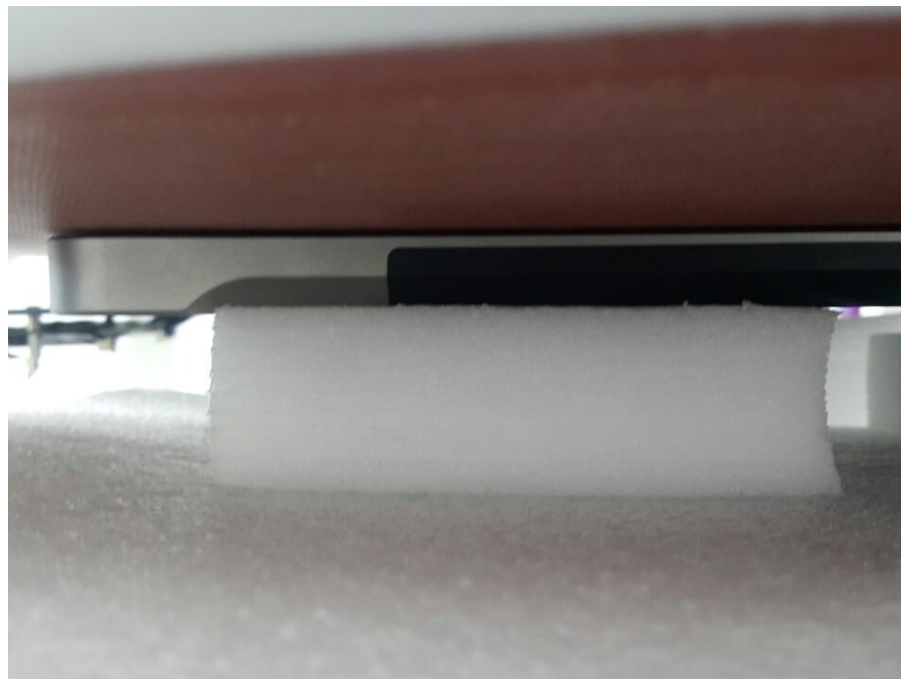
KCTL

Appendix C. Test Photo

Front(Ant.1)



Front(Ant.2)



KCTL Inc.

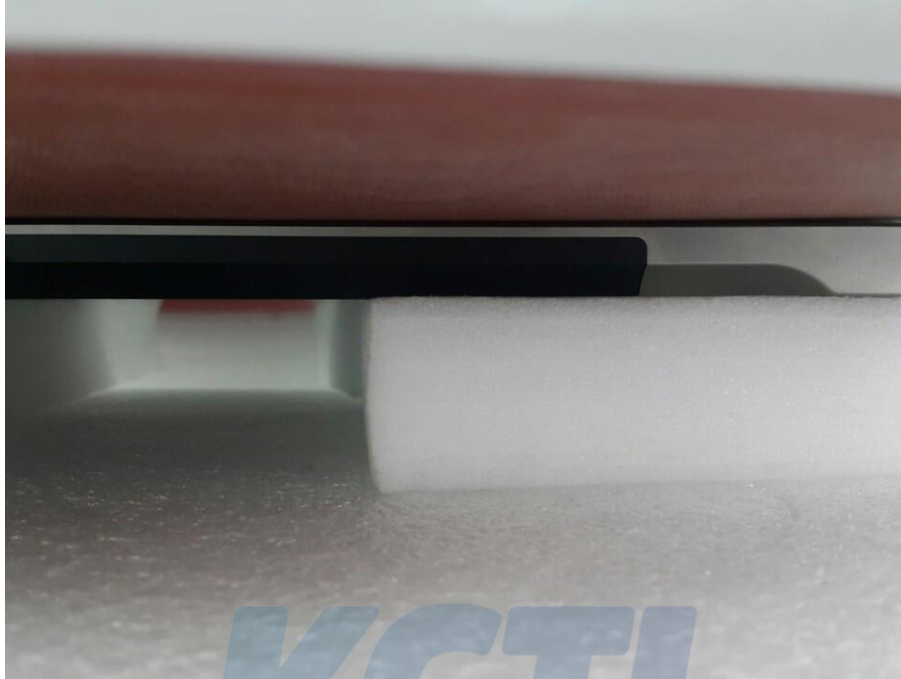
65, Sinwon-ro, Yeongtong-gu,
Suwon-si, Gyeonggi-do, 16677, Korea
Tel : 82-31-285-0894 Fax : 82-505-299-8311
www.kctl.co.kr

Report No.:
KR17-SPF0004-D

Page (92) of (95)

KCTL

Front(Ant.3)



KCTL

KCTL Inc.

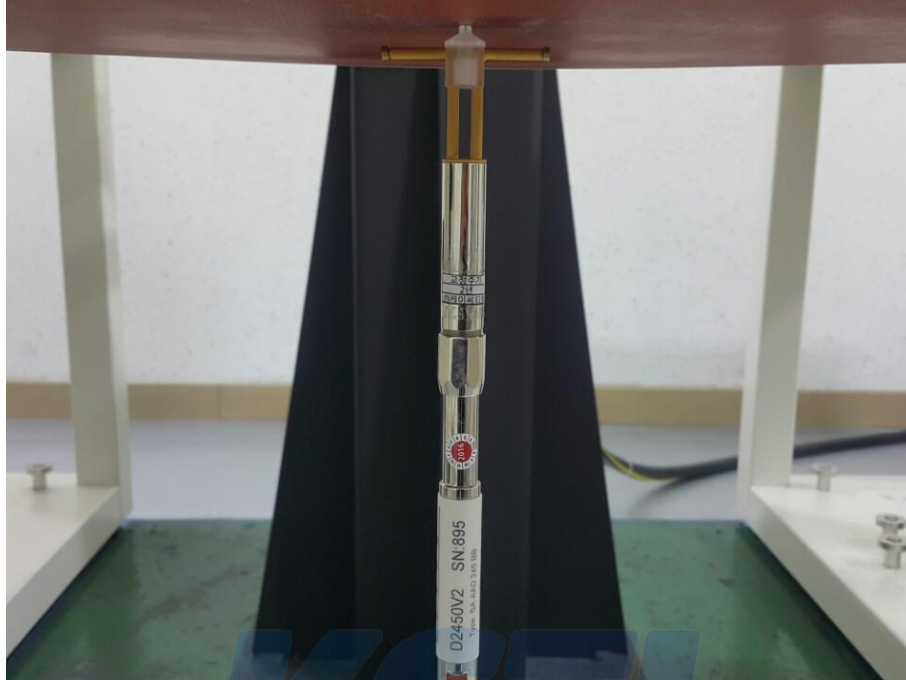
65, Sinwon-ro, Yeongtong-gu,
Suwon-si, Gyeonggi-do, 16677, Korea
Tel : 82-31-285-0894 Fax : 82-505-299-8311
www.kctl.co.kr

Report No.:
KR17-SPF0004-D

Page (93) of (95)

KCTL

System Check 2 450 MHz



System Check 5 000 MHz



KCTL Inc.

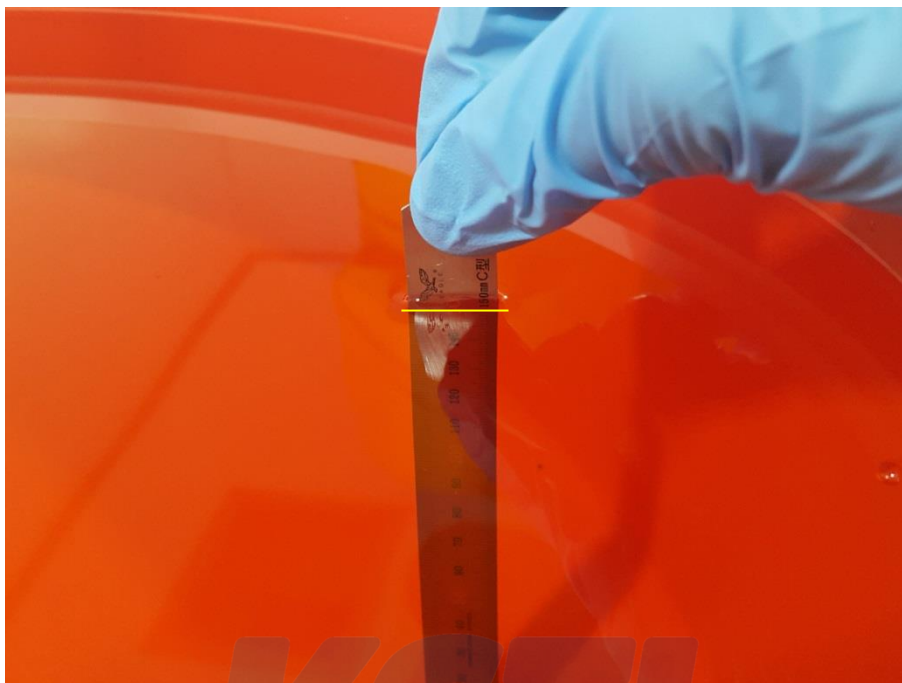
65, Sinwon-ro, Yeongtong-gu,
Suwon-si, Gyeonggi-do, 16677, Korea
Tel : 82-31-285-0894 Fax : 82-505-299-8311
www.kctl.co.kr

Report No.:
KR17-SPF0004-D

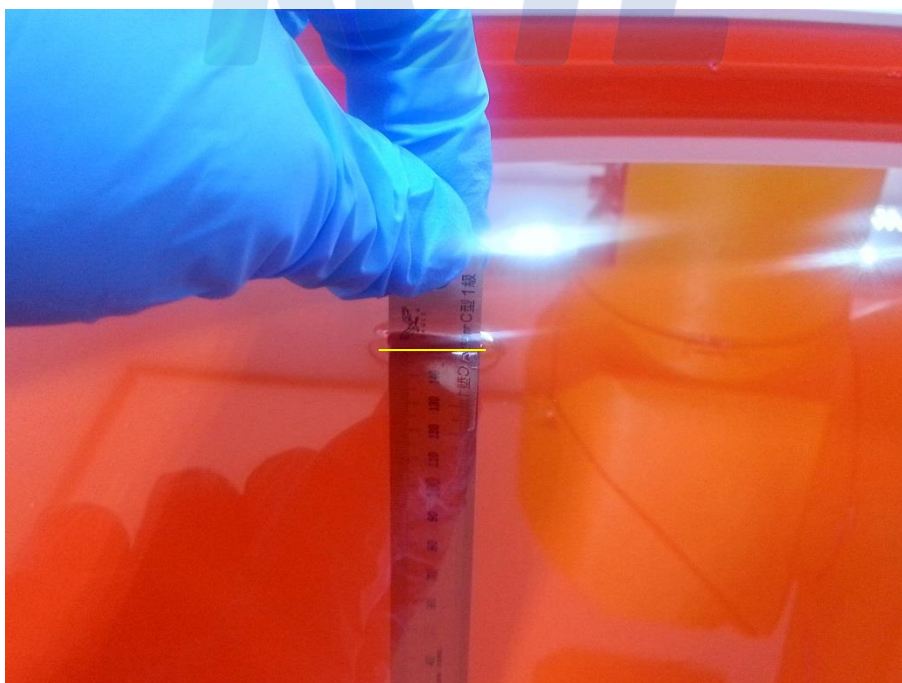
Page (94) of (95)

KCTL

Liquid Depth HSL 2 450



Liquid Depth MSL 2 450



KCTL Inc.

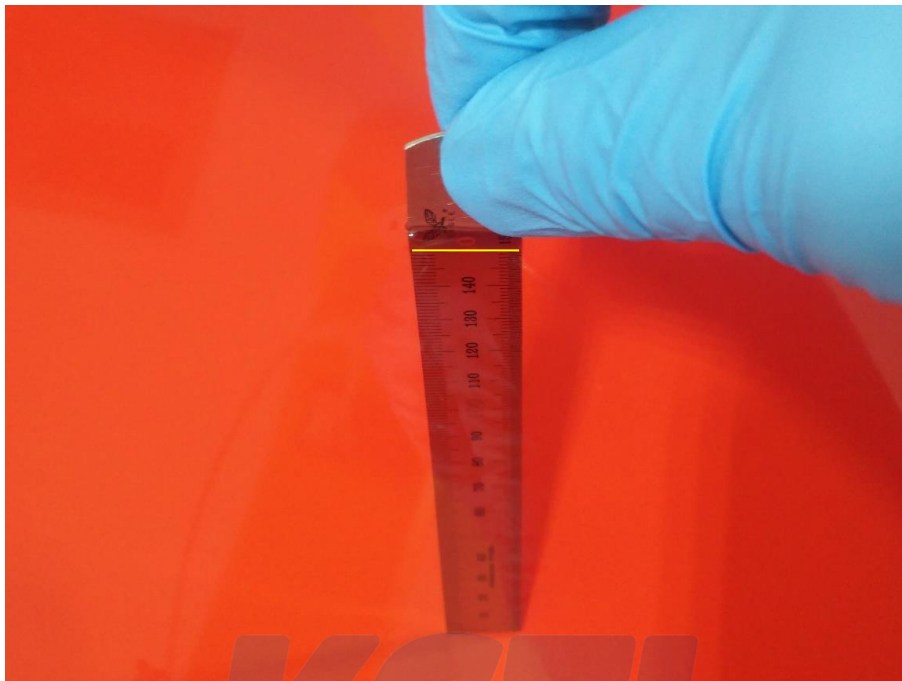
65, Sinwon-ro, Yeongtong-gu,
Suwon-si, Gyeonggi-do, 16677, Korea
Tel : 82-31-285-0894 Fax : 82-505-299-8311
www.kctl.co.kr

Report No.:
KR17-SPF0004-D

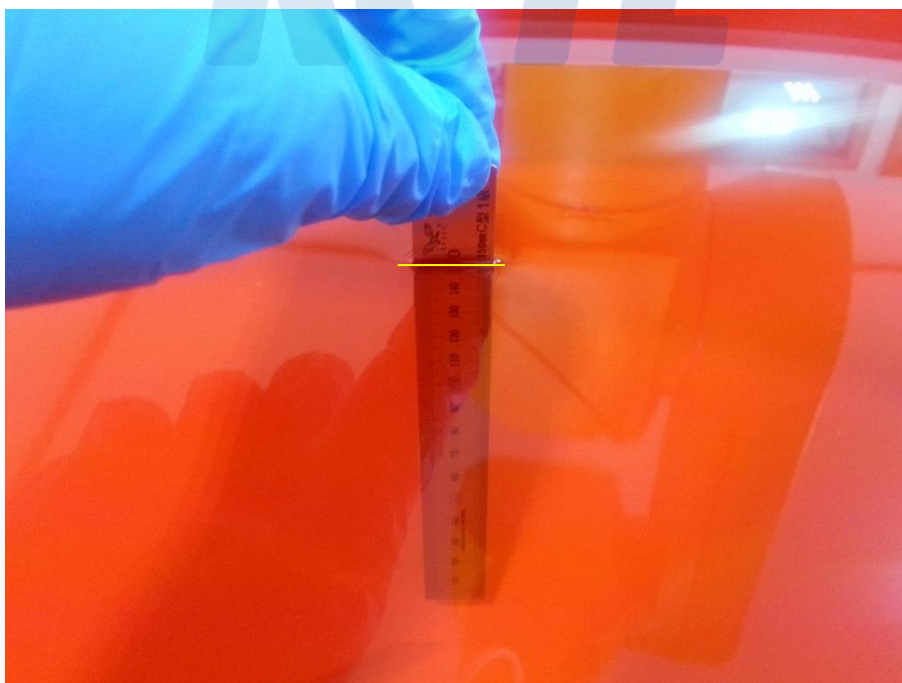
Page (95) of (95)

KCTL

Liquid Depth HSL 5 000



Liquid Depth MSL 5 000



- END OF REPORT -