



# TeleCLIENT TC7530 Series

- 1. Preface..... 4
  - 1.1. Purpose..... 4
  - 1.2. Audience..... 4
  - 1.3. How To Use This Manual..... 4
  - 1.4. Statements ..... 5
    - 1.4.1. European Telecom Statement ..... 5
    - 1.4.2. ENERGY STAR®..... 5
    - 1.4.3. TeleVideo, Inc. Software License Agreement ..... 5
    - 1.4.4. Grant..... 5
    - 1.4.5. Limit of Liability ..... 6
    - 1.4.6. U.S. Government Restricted Rights ..... 6
    - 1.4.7. Declaration of Conformity..... 6
    - 1.4.8. Statement of Limited Warranty..... 7
- 2. Introduction..... 8
  - 2.1. Safety Instructions ..... 8
    - 2.1.1. Safety Notices..... 8
    - 2.1.2. Other Product Safety Considerations ..... 9
  - 2.2. Introduction..... 10
    - 2.2.1. Features ..... 11
  - 2.3. Equipment Overview..... 11
- 3. Hardware Installation..... 13
  - 3.1. Rear Panel..... 13
    - 3.1.1. I/O Ports ..... 13
    - 3.1.2. Connecting the TeleCLIENT TC7530 ..... 14
  - 3.2. Powering on the TeleCLIENT TC7530 ..... 15
  - 3.3. Front Control Panel..... 15
    - 3.3.1. Activity LED..... 16



## Appendix F. User Manual

3.3.2.	Ethernet LED .....	16
3.4.	Troubleshooting .....	16
3.5.	PowerSaver .....	17
4.	Software Configuration .....	18
4.1.	TeleCLIENT Setup Wizard .....	18
4.1.1.	Network Settings .....	19
4.1.2.	Display Setting .....	31
4.1.3.	Control Panel .....	33
4.2.	Setting TeleCLIENT TC7530 Properties .....	48
4.2.1.	General Tab .....	49
4.2.2.	Local Resources Tab .....	50
4.2.3.	Display Tab .....	50
4.2.4.	Experience Tab .....	51
4.2.5.	Control Panel Tab .....	52
4.2.6.	Security Tab .....	52
4.2.7.	Management Tab .....	54
4.2.8.	Net-Info Tab .....	56
5.	Operation .....	58
5.1.	Powering On .....	58
5.2.	Using the TeleCLIENT Connection Manager .....	58
5.3.	Configuring Network Connections .....	59
5.3.1.	Creating a New Connection .....	60
5.3.2.	Editing Connections .....	71
5.3.3.	Deleting a Connection .....	74
5.3.4.	Setting Start-up Connections .....	75
5.4.	Connecting to a Network Server .....	76
5.5.	Using the TeleCLIENT TC7530 Hot Keys .....	76
5.5.1.	Starting Multiple Connections .....	77
5.6.	Logging Off .....	78
5.6.1.	Ending Auto-Start Connections .....	78
6.	Appendix A .....	79



FCC ID : PFMTC7530  
Report No:E03.0820.FCC.444N  
Issue of Date: August 20, 2003

## Appendix F. User Manual

---

6.1. Specifications .....	79
6.1.1. TeleCLIENT TC7530 Hardware Specifications .....	79
6.1.2. Networking, Communications And Input/Output Specifications .....	80
6.1.3. TeleCLIENT TC7530 Software Specifications .....	80
6.1.4. Environmental Specifications .....	81
6.1.5. Regulatory Compliance Specifications .....	82
6.1.6. Physical Specifications .....	82
6.1.7. Warranty Information .....	82

---



# 1. Preface

## 1.1. Purpose

The purpose of this manual is to provide installation and operation information for the TeleCLIENT™Windows®Based Terminal.

## 1.2. Audience

This manual is intended for both authorized system administrators and users who have experience with networking products and Windows-based terminals. It is assumed that the personnel using this document have the appropriate background and knowledge to use the TeleCLIENT.

## 1.3. How To Use This Manual

This manual is designed to help you locate information quickly and easily. Each chapter contains the following information:

### ◆ Section 1: Preface

Provides equipment compliance, warranty and license agreement information.

### ◆ Section 2: Introduction

Describes the TeleCLIENT and provides basic safety information.

### ◆ Section 3: Hardware Installation

Describes how to install the TeleCLIENT hardware.

### ◆ Section 4: Software Configuration

Describes how to configure the TeleCLIENT software.

### ◆ Section 5: Operation

Provides instructions for using the TeleCLIENT Terminal Connection Manager and hot keys.



## Appendix F. User Manual

FCC ID : PFMTC7530  
Report No:E03.0820.FCC.444N  
Issue of Date: August 20, 2003

### ◆ Section 6: Appendix

System specifications and warranty information.

---

**WARNING:** THE PROCEDURES DESCRIBED IN THIS DOCUMENT ARE INTENDED FOR AUTHORIZED USERS ONLY. UNAUTHORIZED PERSONNEL PERFORMING THESE PROCEDURES CAN AFFECT THE PRODUCT'S WARRANTY STATUS.

---

## 1.4. Statements

### 1.4.1. European Telecom Statement

The TeleCLIENT is intended for connection to a Network Centric System. **DO NOT** connect the TeleCLIENT to the Telecom System.

### 1.4.2. ENERGY STAR®

As an ENERGY STAR Partner, TeleVideo, Inc. has determined that this product meets the ENERGY STAR guidelines for energy efficiency. ENERGY STAR is a U.S. registered mark.

### 1.4.3. TeleVideo, Inc. Software License Agreement

PLEASE CAREFULLY READ THE FOLLOWING TERMS AND CONDITIONS BEFORE USING THIS SOFTWARE. USING THIS SOFTWARE INDICATES YOUR ACCEPTANCE OF THE FOLLOWING TERMS AND CONDITIONS.

### 1.4.4. Grant

You may use the TeleCLIENT Connection Manager in conjunction with the TeleCLIENT as provided. You may transfer ownership of the Equipment, including the right to transfer the Software to another party so long as that party agrees to accept these terms and conditions.

YOU MAY NOT COPY, MODIFY, TRANSLATE OR TRANSFER THE SOFTWARE, OR MODIFICATION THEREOF, IN WHOLE OR IN PART, EXCEPT AS EXPRESSLY PROVIDED FOR IN THIS LICENSE. YOU MAY NOT DECOMPILE, REVERSE ENGINEER, OR OTHERWISE DECODE OR ALTER THE SOFTWARE PROVIDED WITH THIS EQUIPMENT.



## Appendix F. User Manual

### 1.4.5. Limit of Liability

UNDER NO CIRCUMSTANCES SHALL TELEVIDEO, INC. BE LIABLE FOR LOSS OF DATA, COSTS, OR ANY INCIDENTAL OR CONSEQUENTIAL DAMAGES, HOWEVER CAUSED AND ON ANY THEORY OF LIABILITY. THESE LIMITATIONS SHALL APPLY EVEN IF TELEVIDEO, INC. OR ITS RESELLER HAS BEEN ADVISED OF THE POSSIBILITY OF SUCH DAMAGES, AND NOTWITHSTANDING ANY FAILURE OF ESSENTIAL PURPOSE OF ANY LIMITED REMEDY PROVIDED HEREIN.

WHEN USING THIS PRODUCT, YOU AGREE THAT THESE ARE THE ONLY APPLICABLE TERMS OF AGREEMENT BETWEEN US COVERING THE SOFTWARE.

### 1.4.6. U.S. Government Restricted Rights

This software is provided with RESTRICTED RIGHTS. Use, duplication or disclosure by the Government is subject to restrictions as set forth in subparagraph (c)(1)(ii) of the Rights in Technological Data and computer software clause at DFARS 252.227-7013 or in subparagraphs (c)(1) and (2) of the Commercial Computer Software-Restricted Rights at 8 C.F.R. 52-227-19 as applicable. Contractor/Licenser is TeleVideo, Inc.

### 1.4.7. Declaration of Conformity

**Application of Council Directive:**

89/33 6/EEC, 73/23/EEC

**Standard to which Conformity is Declared:**

UL 60950, EN 60950: 2000

**Manufacturer's Name:**

TeleVideo, Inc

**Manufacturer's Address:**

2345 Harris Way  
San Jose, CA 95131 USA  
408.954.8333  
www.televideo.com

**Type of Equipment:**

Information Technology  
Equipment (Computer Terminal)



### 1.4.8. Statement of Limited Warranty

#### ◆ Scope of Limited Warranty

TeleVideo, Inc. (TeleVideo) warrants to Buyer that its products, except software, will be free from defects in materials and workmanship for 365 days from the date of purchase. TeleVideo's obligation under this warranty will be limited to repairing or replacing, at TeleVideo's option, the parts of the products which prove defective in material or workmanship, provided that Buyer gives TeleVideo prompt notice of any defect and satisfactory proof thereof.

#### ◆ Exclusions

This limited warranty does not cover losses or damages which occur in shipment to or from Buyer, nor due to (1) improper installation or maintenance, misuse, neglect or any cause other than ordinary commercial or industrial application, or (2) adjustment, repair, or modification by anyone other than TeleVideo's authorized agent, or (3) improper environment, excessive or inadequate heating or air-conditioning and electrical power failures, surges, or other irregularities, or (4) any statements made about TeleVideo's products by sales representatives, dealers, distributors or agents, unless confirmed in writing by a TeleVideo officer. Equipment purchased must be in a new, sealed condition upon delivery to the end user in order to qualify for TeleVideo's limited warranty.

The foregoing TeleVideo limited warranty is in lieu of all other warranties, whether oral, written, expressed, implied, or statutory. Implied warranties of merchantability and fitness for a particular purpose will not apply.

TeleVideo's warranty obligations and Buyer's remedies hereunder are solely and exclusively as stated herein. TeleVideo makes no warranty whatsoever concerning any software products, which are sold "as is" and "with all faults". TeleVideo's liability, whether based on contract, tort, warranty, strict liability, or any other theory, shall not exceed the price of the individual unit whose defect or damage is the basis of the claim. In no event shall TeleVideo be liable for any loss of profits, loss or use of facilities or equipment, or other indirect, incidental or consequential damages.



## 2.Introduction

This chapter provides an overview of the **TeleCLIENT Windows-Based Terminal**. It includes the following sections:

- Safety Instructions
- Introduction
- Equipment Overview

### 2.1. Safety Instructions

Please read this important safety information **BEFORE** using your TeleCLIENT and save for later use.

#### 2.1.1. Safety Notices

##### ◆ Danger Notices

A danger notice indicates a hazard that could possibly cause death or serious personal injury. Please note the following danger notices before using this product.

---

**DANGER: THIS PRODUCT USES ELECTRICAL POWER AND CONTAINS SENSITIVE COMPONENTS. IT IS NOT DESIGNED FOR CONSUMER SERVICING. IF YOUR TELECLIENT REQUIRES REPAIR, OR YOU WISH TO ADD COMPONENTS THAT REQUIRE OPENING THE CASE, PLEASE CONTACT YOUR NEAREST SERVICE PROVIDER FOR ASSISTANCE. DO NOT ATTEMPT TO SERVICE THE TELECLIENT YOURSELF. REFER ALL SERVICING TO QUALIFIED SERVICE PERSONNEL. UNAUTHORIZED INDIVIDUALS WHO ATTEMPT TO REPAIR THIS PRODUCT, OR TO INSTALL OR REPLACE COMPONENTS MAY RISK ELECTRICAL SHOCK AND CAUSE THE PRODUCT WARRANTY TO BE VOID.**

---

---

**DANGER: TO AVOID A SHOCK HAZARD:**

---





## Appendix F. User Manual

- Connect the power cord to a properly wired and grounded power outlet.
- Make sure that any equipment attached to this product is also properly connected to wired receptacles.

---

**DANGER: THE TELECLIENT POWER SWITCH IS NOT THE MAIN DISCONNECT. THE MAIN POWER DISCONNECT IS THE DETACHABLE LINE CORD.**

---

### ◆ Warning Notices

A warning notice indicates the possibility of damage to a program, device, system or data.

#### 2.1.2. Other Product Safety Considerations

Please note the following:

1. Do not expose the power supply, TeleCLIENT, line cord or monitor to moisture, dust or corrosive gases.
2. Position the TeleCLIENT in a well-ventilated area; do not allow debris near the ventilation holes.
3. Keep the TeleCLIENT away from heat sources, including direct sunshine and heating appliances. The maximum operating temperature is 35° C (95° F).
4. Always unplug the TeleCLIENT before cleaning. Do not use liquid cleaners or aerosol cleaners. Use only a damp cloth for cleaning.
5. Make sure the TeleCLIENT is placed on a stable surface.
6. Do not block slots and openings anywhere on the TeleCLIENT.
7. Use only the type of power indicated on the marking label to operate this product. Consult your dealer or local power company if you are unsure of the type of power available.
8. Use only the proper type of power supply cord set (provided in your accessory box) for this unit. Use a detachable type: UL listed/CSA certified, type SVT/SJT, rated as 10A 125V minimum, VDE approved or its equivalent.
9. Do not allow anything to rest on the power cord.



## Appendix F. User Manual

10. If an extension cord is used with the TeleCLIENT make sure that the total ampere ratings of all products plugged into the cord does not exceed the extension cord ampere rating.
11. Do not insert objects of any kind through the TeleCLIENT slots.
12. Unplug this product from the wall outlet immediately and contact qualified service personnel under the following conditions:
  - When the power cord or plug is damaged or frayed.
  - If liquid has been spilled into the TeleCLIENT or it has been exposed to rain or water.
  - If the TeleCLIENT has been dropped or damaged.
13. Install the socket-outlet near the equipment and make sure it is easily accessible.

## 2.2. Introduction

Thank you for choosing the **TeleCLIENT Windows-Based Terminal**. The TeleCLIENT is a “Powered by Microsoft Windows CE” Windows®-based terminal that empowers users to access and manage business-critical applications such as:

- Point-of-sale
- Help and reservation desk
- Electronic Commerce
- Word-processing
- Spreadsheets

All can be accessed through host Windows, or Unix servers and all within the familiar Windows environment.

The **TeleCLIENT** provides the freedom to choose any of the following:

- Microsoft' s Remote Desktop Protocol (RDP®) protocol to communicate directly to a server loaded with Microsoft Windows NT Server®4.0, Terminal Server Edition, Windows 2000 Terminal Services, or Windows .Net Server.



## Appendix F. User Manual

- Citrix' s Independent Computing Architecture (ICA®) protocol to communicate directly to a server loaded with Citrix WinFrame®, Citrix MetaFrame™, or Citrix MetaFrame XP™
- Direct connection to a legacy server to run terminal emulation, such as TeleVideo 910 or 915 (Optional).
- Each TeleCLIENT can be configured for communication directly via TCP/IP (Transmission Control Protocol/Internet Protocol) or PPP (Point-to-Point Protocol).

### 2.2.1. Features

The TeleCLIENT offers the following features:

- **Ease of Installation and Administration**  
The Microsoft Windows CE Operating System is embedded on a 8MB local flash disk. The software can be upgraded and re-programmed locally or remotely via Ethernet download.
- **More Secure than PCs**  
Since there is no local storage system, administrators may keep all confidential and business-critical files and data on the server to preserve data security and integrity.
- **Multiple Protocols Support**  
System administrators may choose the Remote Desktop Protocol (RDP) that executes on Microsoft Windows NT Server 4.0, Terminal Server Edition, Windows 2000 Terminal Services, Windows .Net Server, or the Independent Computing Architecture (ICA) protocol through Citrix MetaFrame, MetaFrame XP, or WinFrame server systems to best fit their needs.
- **Touch Screen Support**  
TeleCLIENT supports the 3M Touch Systems® and Elo TouchSystems® Screens to provide POS and kiosks solutions.
- **Innovative, Functional and Modular Design**  
The all-in-one LCD TeleCLIENT' s compact design is the ideal solution for limited workspaces.

### 2.3. Equipment Overview

Your TeleCLIENT comes with everything needed to access your network server running under Microsoft Windows NT Server 4.0, Terminal Server Edition, Windows 2000



FCC ID : PFMTC7530  
Report No:E03.0820.FCC.444N  
Issue of Date: August 20, 2003

## ***Appendix F. User Manual***

---

Terminal Services, Citrix WinFrame or MetaFrame or other legacy server operating systems.

You will find the following items in your package:

- Integrated 15.1" TFT LCD TeleCLIENT Windows-Based Terminal
- Keyboard: Windows compatible
- Two-button mouse: Standard
- Inline power supply: Universal power supply standard
- Power Line cord
- CD-ROM version of TeleCLIENT User' s Manual

## 3. Hardware Installation

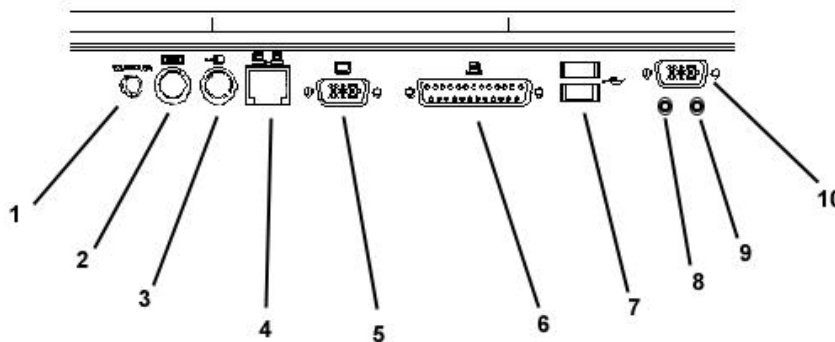
This chapter explains how to install, connect and set-up the TeleCLIENT TC7530 hardware. It includes the following sections:

- Connecting to I/O Ports
- Powering on the TeleCLIENT TC7530
- Front Panel Controls
- Troubleshooting
- PowerSaver

### 3.1. Rear Panel

#### 3.1.1. I/O Ports

The I/O ports for the TC7530 are located at the bottom of the unit while putting the LCD panel face down ([Figure 3.1](#)). These include:



I/O Ports



## Appendix F. User Manual

FCC ID : PFMTC7530  
Report No:E03.0820.FCC.444N  
Issue of Date: August 20, 2003

1	DC-in
2	PS/2 Keyboard
3	PS/2 Mouse
4	Ethernet LAN
5	External VGA/SVGA
6	Printer/Parallel Port
7	USB Ports
8	Earphone
9	Microphone
10	Serial Port

### 3.1.2. Connecting the TeleCLIENT TC7530

1. Remove the TeleCLIENT TC7530, line cord, and accessories from the carton, and set the unit on a flat work-surface.
2. Connect the keyboard to the keyboard connector.
3. Connect the mouse to the mouse connector.
4. Depending on configuration needs, connect a printer to the parallel port, USB port, or other peripheral devices.
5. Depending on your hardware, connect to the host:
  - If using a network connection, connect a 10/100Base-T, twisted-pair, Category 5 RJ45 cable to the network port.

---

**NOTE: THE TC7530 SUPPORTS BOTH 10 MBPS AND 100 MBPS LAN ACCESS. TO ENSURE PROPER 100 MBPS OPERATION THE ETHERNET LAN CABLES MUST BE OF CATEGORY 5 TYPE.**

---



## Appendix F. User Manual

FCC ID : PFMTC7530  
Report No:E03.0820.FCC.444N  
Issue of Date: August 20, 2003

6. Plug the AC cord into an AC outlet.

---

**CAUTION:** DO NOT FORCE THE CONNECTORS INTO THE SOCKETS. IF THERE IS UNDUE RESISTANCE, MAKE SURE THE CONNECTOR IS PLACED CORRECTLY IN THE SOCKET.

---

### 3.2. Powering on the TeleCLIENT TC7530

When connecting the TeleCLIENT TC7530 to AC outlets, please note the following:

7. To turn on your TC7530, simply press the power button on the front panel. This will power on both the TeleCLIENT TC7530 terminal and the monitor. If the monitor displays an image, installation is complete.

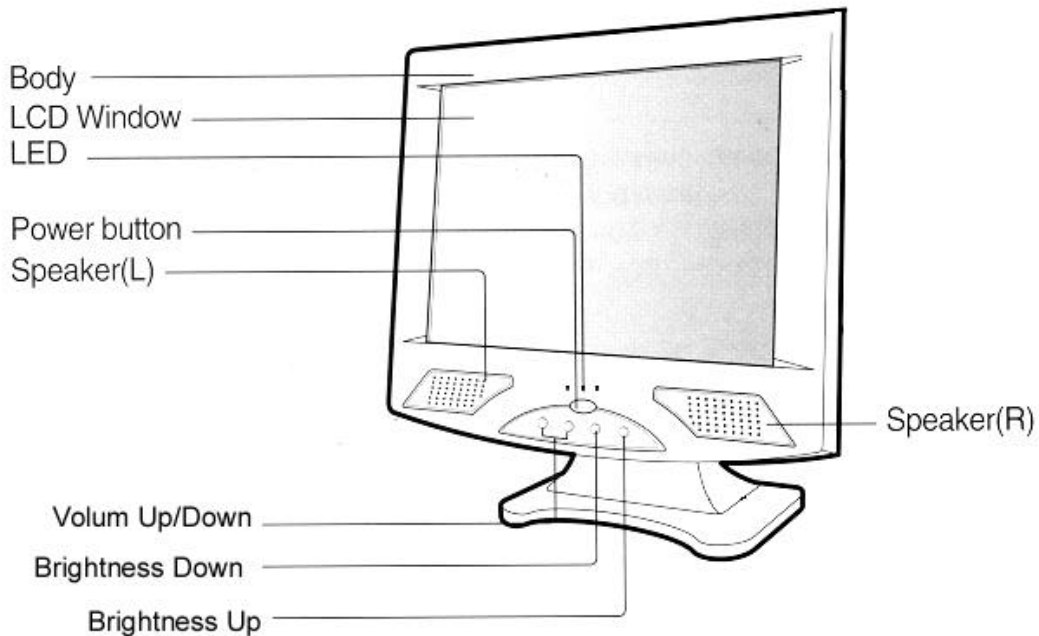
---

**WARNING!** TO PREVENT RISK OF FIRE OR ELECTRIC SHOCK, PLEASE FOLLOW THESE INSTRUCTIONS CAREFULLY.

---

### 3.3. Front Control Panel

The front bezel of the TC7530 has three LED lights and other control buttons. The power button is designed to turn on or off system under light pressure ([Figure 3.2](#)).



Control Buttons

### 3.3.1. Activity LED

This LED blinks if there is any network activity.

### 3.3.2. Ethernet LED

This LED lights up only when the unit is connected at 100 Mbps.

## 3.4. Troubleshooting

Before calling for service, check the information in this section to see if the solution can be found in this document or TeleVideo website ([www.televideo.com](http://www.televideo.com)). If the problem persists, please call the phone number on the warranty section.

#### ◆ There is no screen image

- Check to see that the computer is plugged in and turned on.





## Appendix F. User Manual

FCC ID : PFMTC7530  
Report No: E03.0820.FCC.444N  
Issue of Date: August 20, 2003

### ◆ The screen image is too light or too dark

- Adjust the brightness settings.

### 3.5. PowerSaver

This monitor has a built-in power management system called PowerSaver. This system saves energy by switching your monitor into a low-power mode when it has not been used for a certain amount of time. The monitor automatically returns to normal operation when you move the computer's mouse or press a key on the keyboard. For energy conservation, turn your monitor OFF when it is not needed, or when leaving it unattended for long periods. Use the Software section of the manual to set up this feature

## 4. Software Configuration

The TeleCLIENT TC7530 software includes the **TeleCLIENT Setup Wizard** to assist with the basic setup and software configuration. It includes the following sections:

- Using the TeleCLIENT Setup Wizard
- Resetting TeleCLIENT TC7530 properties to the factory default
- TeleCLIENT Software Update Procedure

### 4.1. TeleCLIENT Setup Wizard

---

**NOTE: TELECLIENT WILL DETECT FOR DHCP SERVER ON THE NETWORK AT POWER-ON. IF DHCP SERVICE IS NOT ACTIVATED THE CLIENT WILL ISSUE A DEFAULT IP ADDRESS WHICH WILL HAVE TO BE CHANGED BY AN ADMINISTRATOR.**

---

The first time power-up, the **TeleCLIENT Setup Wizard** welcome window will appear, and guide through the TeleCLIENT setup ([Figure 4.1](#)).

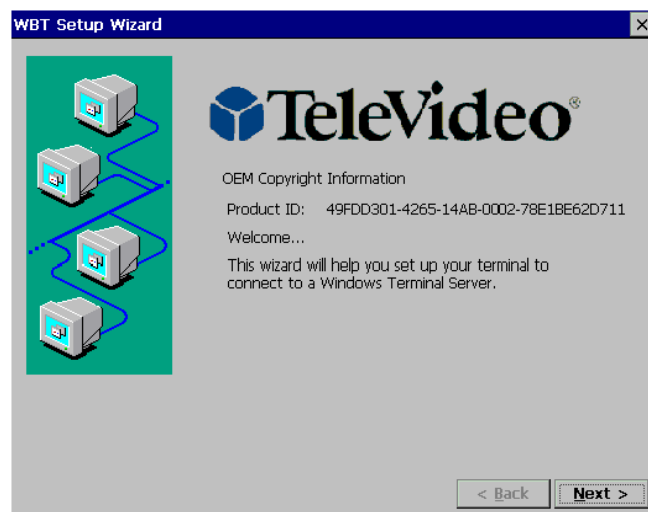


Figure 4.1 TeleCLIENT Setup Wizard Welcome Window

## 4.1.1. Network Settings

8. Click **Next** to start the setup procedure.
9. The Terminal Name window appears ([Figure 4.2](#)).

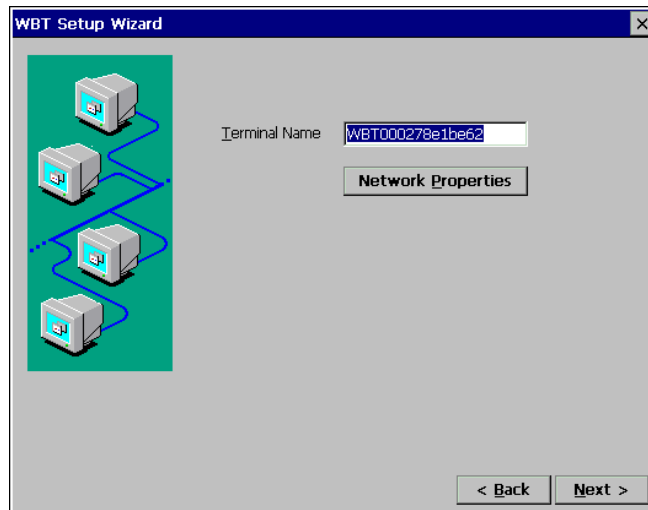


Figure 4.2 TeleCLIENT Setup Wizard Terminal Name Window

10. Type in the terminal name or leave the default name.
11. Click the **Network Properties** button and the network setup window will appear ([Figure 4.3](#)).

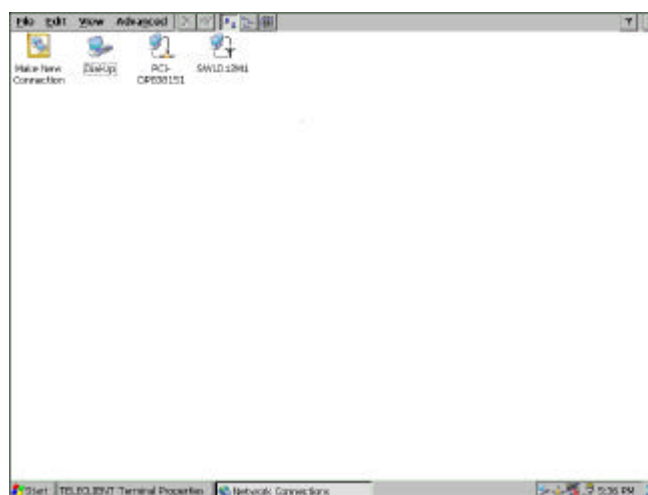


Figure 4.3 Network Properties Window

## Appendix F. User Manual

12. Depends on the TeleClient TC7530 series model, the screen will show different network options. However, PCI-DP838151 Ethernet interface is the default choice for all models. To configure PCI-DP838151, double click the **PCI-DP838151** icon, and TCP/IP setting screen will appear ([Figure 4.4](#)). If it is a wireless model then skip to [step 9](#). If dial-up connection using an external modem is required then skip to [step 26](#). For direct connections, skip to [step 42](#).

### ◆ Ethernet LAN Setup

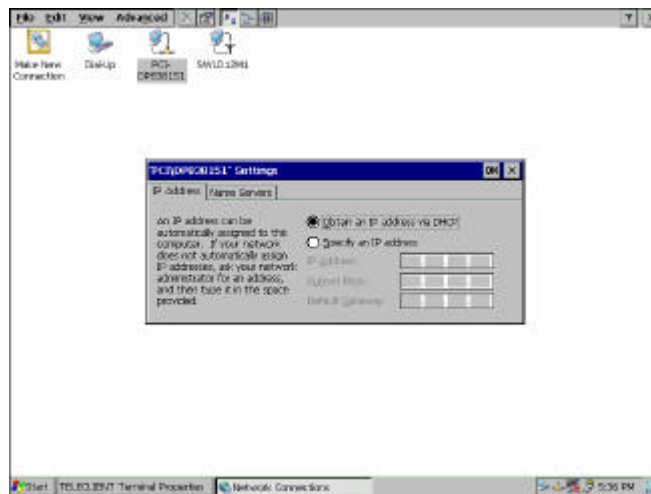


Figure 4.4 PCI-DP838151 Network Interface Setting

13. If DHCP service is available choose the DHCP option and proceed to the next tab, **Name Servers**. Otherwise, choose “**Specify an IP address**” and enter the static IP address for the terminal, then click the **Name Servers** tab.
14. Enter the DNS server and WINS information then click **OK** ([Figure 4.5](#))

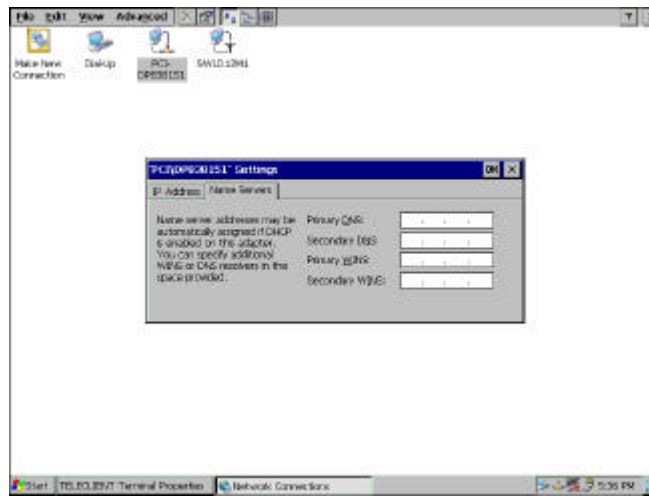


Figure 4.5 DNS/WINS Setting

15. [Figure 4.3](#) should appear again. Close the window by clicking **X** then proceed to the next step.

Default Connection Setup is complete here. If there are no other connections to create skip to [step 53](#).

### ◆ Wireless LAN Setup

16. Double click **SWLD12M1** icon and wireless LAN setting window will appear ([Figure 4.6](#)).

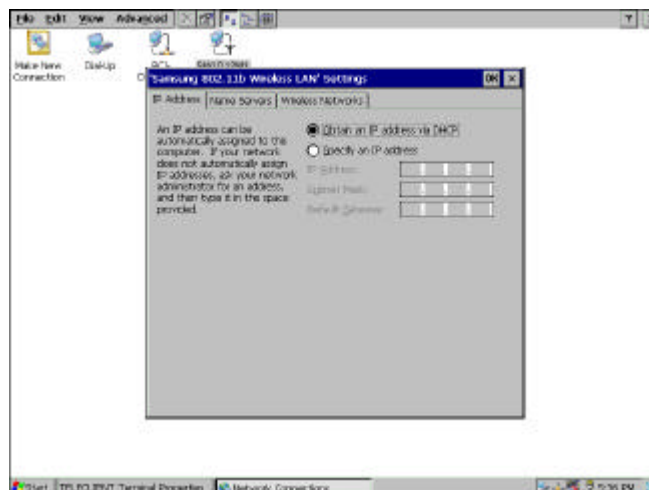


Figure 4.6 SWLD12M1 Wireless LAN Setting

**NOTE: IN ORDER TO ENSURE THAT PCI-DP838151 DOES NOT OVERRIDE SWLD12M1 WIRELESS CONNECTION, BE SURE TO DISABLE PCI-DP838151. TO DO THAT, RIGHT-CLICK PCI-DP838151 ICON AND SELECT DISABLE.**

17. If DHCP service is available choose the DHCP option and proceed to the next tab, **Name Servers**. Otherwise, choose “**Specify an IP address**” and enter the static IP address for the terminal, then click the **Name Servers** tab.
18. Enter the DNS server and WINS information ([Figure 4.7](#)) then proceed to the ‘**Wireless Networks**’ tab ([Figure 4.8](#)).

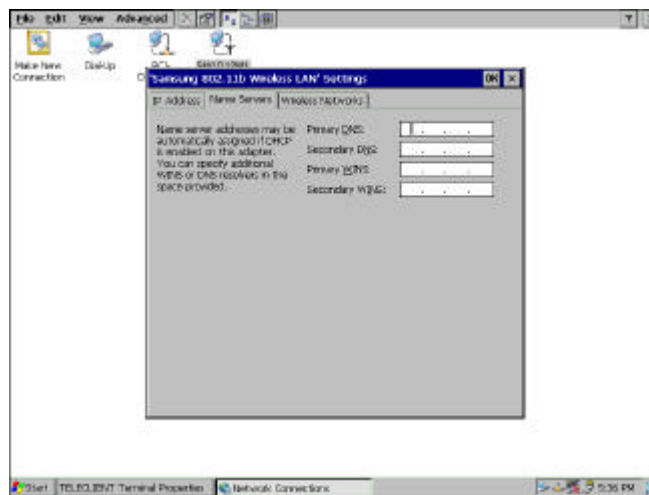


Figure 4.7 DNS/WINS Setting

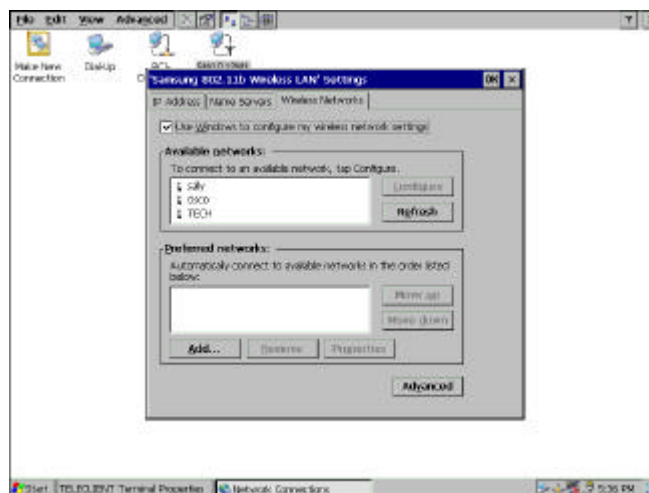


Figure 4.8 Wireless Networks Setting

19. Check the ' Use Windows to configure my wireless setting (recommended), then click **Refresh** to detect available access points.
20. Choose an access point then click **Configure** ([Figure 4.9](#)).

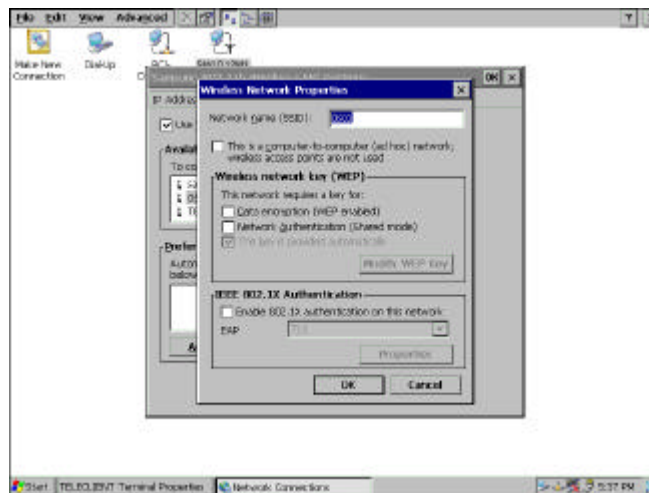


Figure 4.9 Access Point Setting

21. Assign a network name, SSID; the given network name should already be typed in.
22. Check if the wireless mode is used as **Ad Hoc** mode. The 802.11 standard supports two network topologies: **Ad Hoc** and **Infrastructure** mode. A standalone Ad Hoc network topology consists of at least two wireless stations without using access points. This type of network is often referred to as Peer-to-Peer network because it can be constructed quickly without much planning overhead. Ad Hoc mode LANs are normally less expensive because they do not require a dedicated computer to store applications and data. However, they do not perform well for large networks.
23. Check the '**Data Encryption**' box if the network requires **WEP** service enabled. **Wired Equivalent Privacy** is a security mechanism defined within the 802.11 standard designed to make the link integrity of the wireless medium equal to wired cable. Data privacy mechanism based on a 40 bits (128 bit optional) shared key algorithm, as described in the IEEE 802.11 standard.
24. Check the '**Network Authentication**' box if the network requires it to be in Shared Mode. In **Open System**, the default authentication service that simply announces the desire to associate with another station or access point. A station can authenticate with any other station or access point using open system authentication if the receiving station designates open system authentication. In **Share Key**, The optional authentication that involves a more rigorous exchange of frames, ensuring

## Appendix F. User Manual

that the requesting station is authentic. For a station to use shared key authentication, it must implement WEP.

25. Check the ' **The key is provided automatically**' box if the network provides the key automatically. Otherwise, leave the box unchecked and click **Modify WEP Key** to supply all the necessary information on the screen, and then click **OK**.
26. Back on the **Access Point Setting** screen (Figure 4.9), check the box on the bottom if the network uses IEEE 802.1x Authentication then choose the type. Click **OK** to confirm.
27. Back on the **Wireless Networks Setting** screen (Figure 4.8), to select a preferred network, highlight the desired access point from the ' **Available Networks**' box and click **Add**. Configure the access point as steps from 14 thru 19. When this is done the ' **Preferred Networks**' box should display the added access point.
28. If there are multiple access points displayed on the ' **Preferred Networks box**' then highlight the chosen access point and use **Move Up** and **Move Down** buttons to prioritize the list. Top of the list has the highest priority.
29. Click on the **Advanced** button ([Figure 4.10](#)).

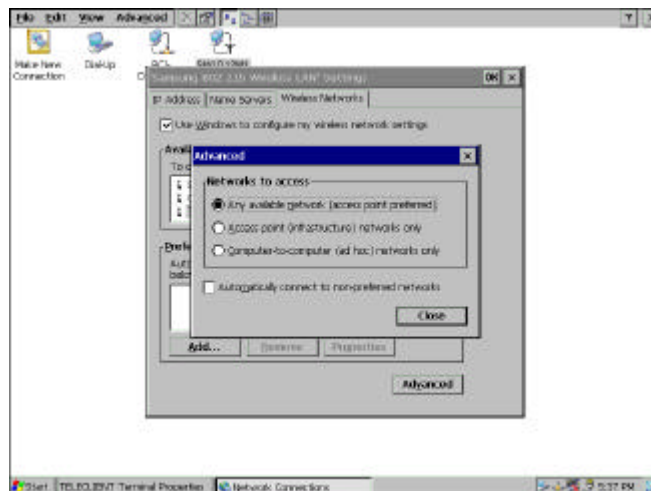


Figure 4.10 Advanced Wireless Setting

30. Choose Networks to access.
31. Check the ' Automatically connect to non-preferred networks' box **ONLY IF** the terminal is allowed to make connection to all the available access points.
32. Click **Close** to confirm, then click **OK** to finish wireless network settings.



Wireless Connection Setup is complete here. If there are no other connections to create skip to [step 52](#).

### ◆ Dial-up Network Setup

33. Back on the **Network Properties** screen ([Figure 4.3](#)); To create a dial-up connection, double click on **Make New Connection** icon.
34. Type in the connection name, select a type of connection, and click **Next** ([Figure 4.11](#)): For a direct connection setup, skip to [step 42](#). For a VPN connection, setup skip to [step 47](#).

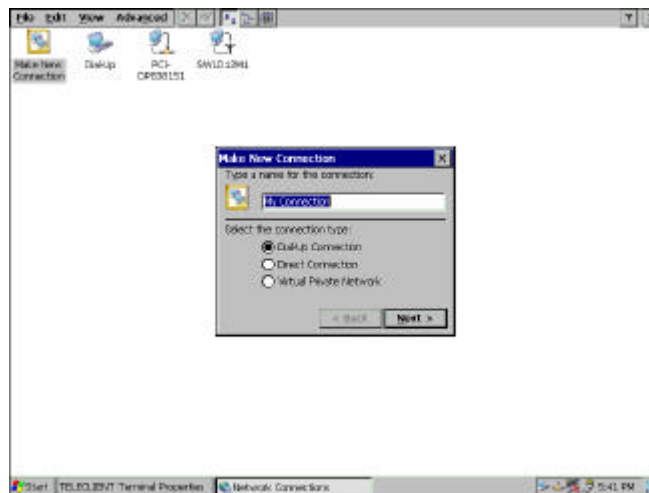


Figure 4.11 Making New Connection

35. On the next screen ([Figure 4.12](#)), click on the drop-down box, and select the COM port the modem is connected to.

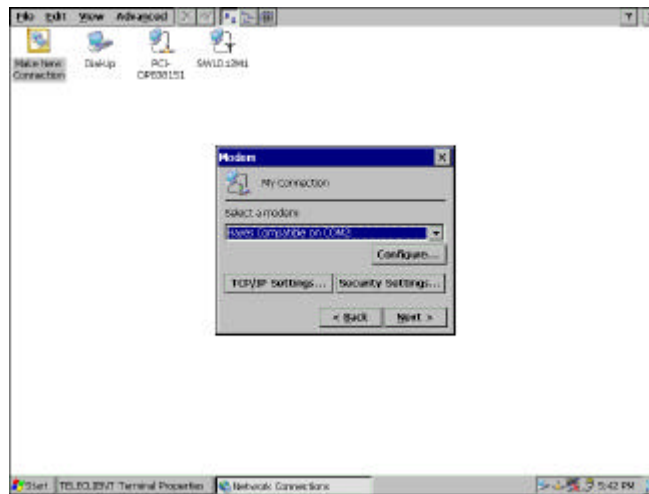


Figure 4.12 Making New Dial-up Connection

36. Click Configure.

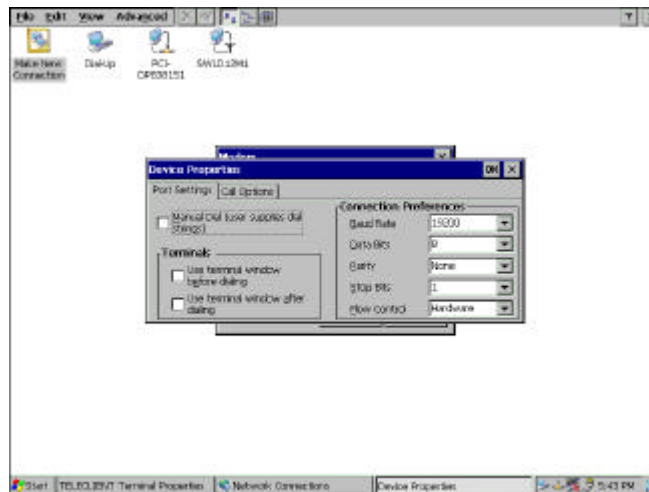


Figure 4.13 Modem Settings

37. Under the **Port Settings** tab, set Manual dialing option and the terminal screen options ([Figure 4.13](#)).

38. Set the modem connection by filling in the Connection Preferences boxes. Click on **Call Options** tab ([Figure 4.14](#)).

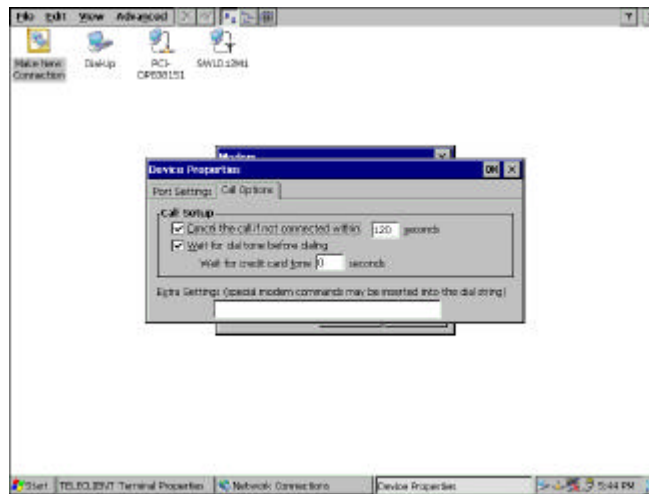


Figure 4.14 Dialing Options

39. Set up calling options then click **OK**.

40. Back on **New Dial-Up** screen ([Figure 4.12](#)), click **TCP/IP Settings** button to configure network properties ([Figure 4.15](#)).

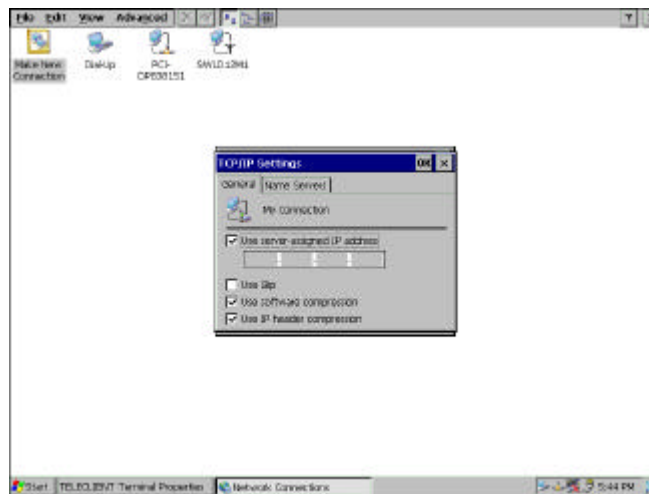


Figure 4.15 Network Properties for Dial-up Connection

41. If a server issues the IP address then leave the box checked and proceed. Otherwise, uncheck the box and assign the IP address.

42. Select **SLIP** if the network uses **SLIP** (Serial Line Internet Protocol) technology: An Internet protocol used to run IP over serial lines such as telephone circuits or RS-232 cables interconnecting two systems. SLIP is now being replaced by **PPP**, Point-to-Point Protocol, (Communication)

- 43. Check the compression options and click the **Name Servers** tab.
- 44. If a server issues the DNS information then leave the box checked and proceed. Otherwise, uncheck the box and assign the DNS information, then click **OK** to confirm ([Figure 4.16](#)).

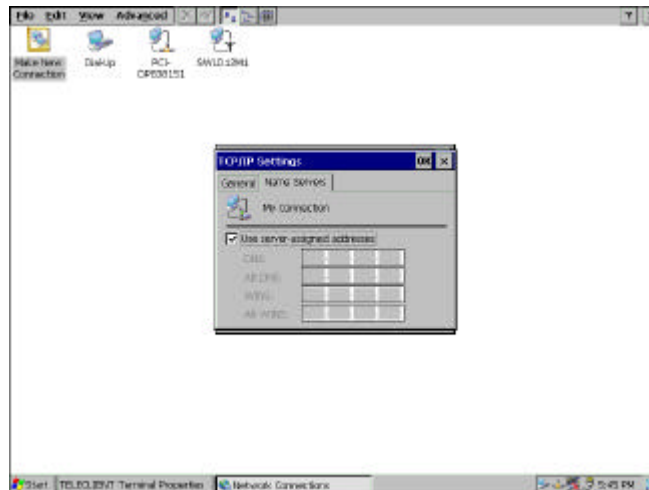


Figure 4.16 DNS Settings

- 45. Back on **New Dial-Up** screen ([Figure 4.12](#)), click the **Security Settings** button ([Figure 4.17](#)).

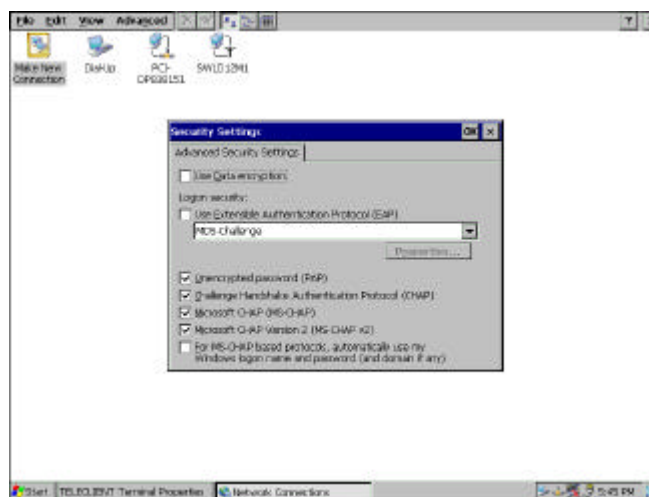


Figure 4.17 Dial-up Connection Security Settings

- 46. Setup the security options and click **OK** to confirm.
- 47. Back on **New Dial-Up** screen ([Figure 4.12](#)), click **Next** to proceed.

Direct Connection Setup: skip to [step 46](#).

VPN Connection Setup: skip to [step 51](#).

48. Set dialing properties and click **Finish** ([Figure 4.18](#)). A new connection icon should appear on the Network Properties screen ([Figure 4.3](#)).

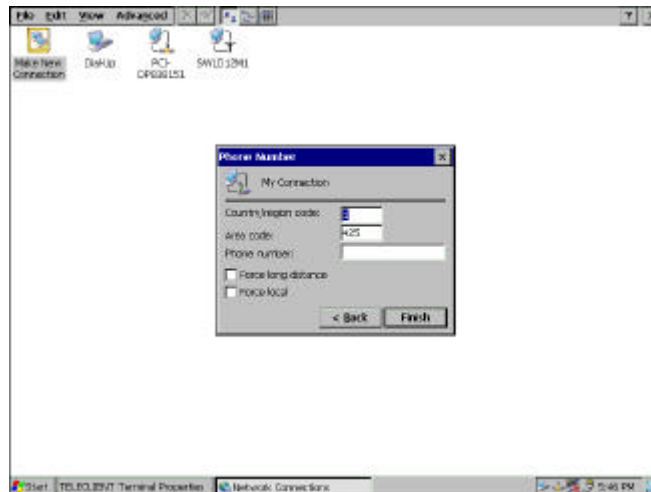


Figure 4.18 Dialing Properties

Dial-up Connection Setup is complete here. If there are no other connections to create skip to [step 52](#).

### ◆ Direct Connection Setup

49. Back on the **Network Properties** screen ([Figure 4.3](#)), to create a **Direct Connection**, double click on **Make New Connection** icon.

50. Type in the connection name, select **Direct Connection**, and click **Next** ([Figure 4.19](#)).

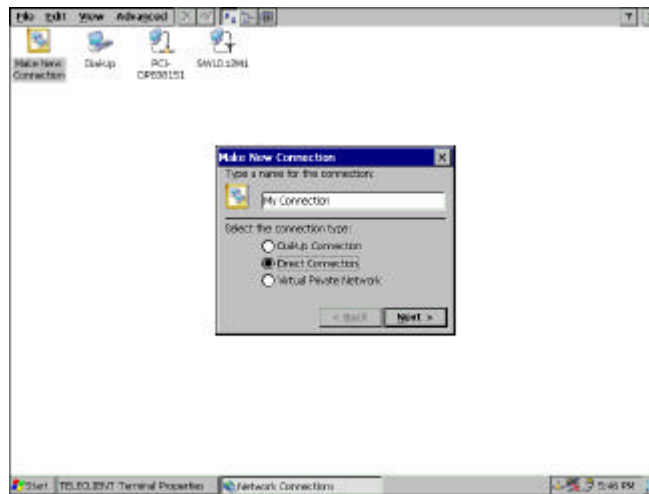


Figure 4.19 Direct Connection Settings

- 51. On the next screen ([Figure 4.20](#)), click on the drop-down box, and select the COM port the serial cable is connected to.
- 52. Follow instructions from [step 28](#) to [step 40](#).
- 53. Click **Finish** ([Figure 4.20](#)). A new connection icon should appear on the **Network Properties** screen ([Figure 4.3](#)).

Direct Connection Setup is complete here. If there are no other connections to create skip to [step 52](#).

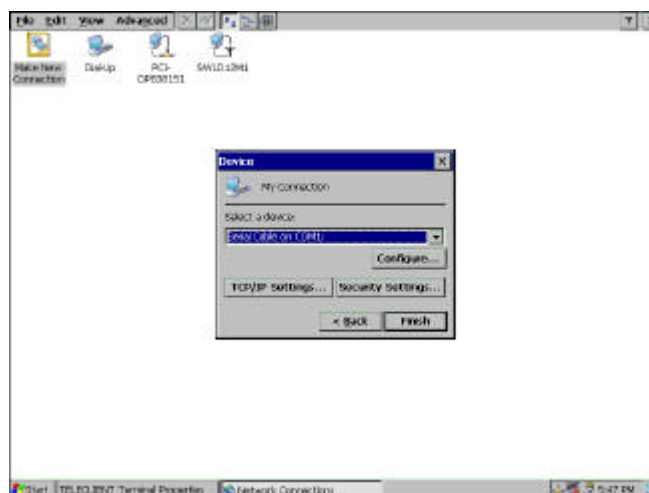


Figure 4.20 Direct Connection Properties

### ◆ VPN Connection Setup

54. Back on the **Network Properties** screen ([Figure 4.3](#)), to create a **VPN Connection**, double click on **Make New Connection** icon.

55. Type in the connection name, select **VPN Connection**, and click **Next** ([Figure 4.21](#)).

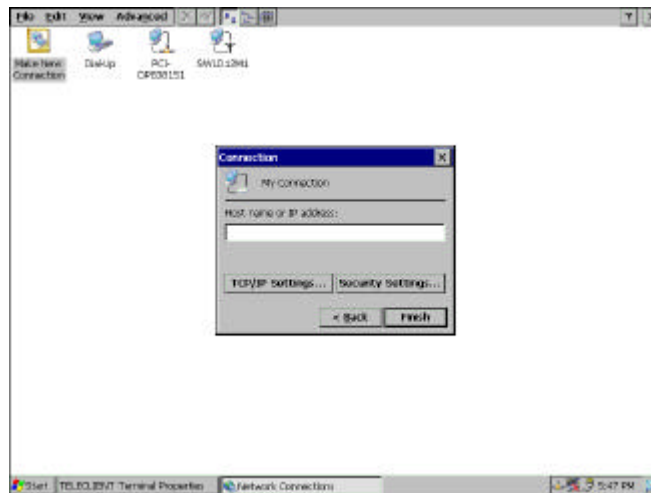


Figure 4.21 VPN Settings

56. Type in the host name or IP address in the box.

57. Click the **TCP/IP Settings** button and follow [step 34](#) to [step 40](#).

58. Click **Finish** ([Figure 4.21](#)). A new connection icon should appear on the **Network Properties** screen ([Figure 4.3](#)).

59. Click **X** to close the window and the screen should return to **WBT Setup Wizard** screen ([Figure 4.2](#)).

60. Click **Next** to continue setting up the terminal.

#### 4.1.2. Display Setting

61. Display setting screen appears ([Figure 4.22](#)).

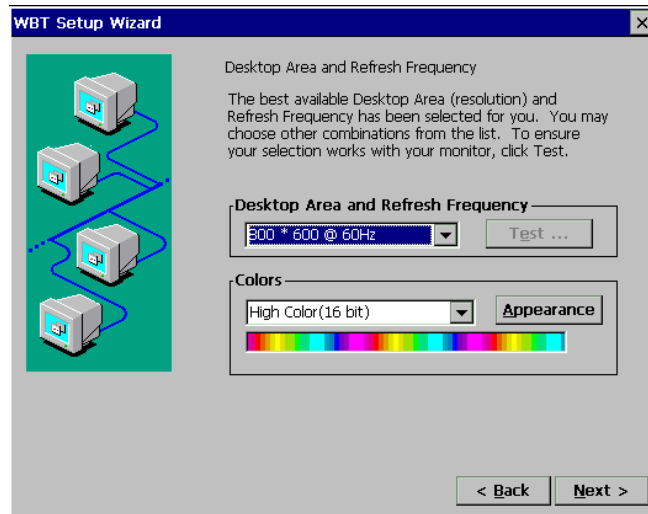


Figure 4.22 Display Settings

62. For standard TeleCLIENT TC7530, there is only one resolution setting, 1024 x 768 @ 60Hz, but for the models with analog-digital converters have more resolutions to choose from. Select a resolution and color settings.
63. For AD-converter models, Select a **Resolution** and **Refresh Frequency** setting. Click Test to see if the setting works.
64. When prompt for 5 seconds delay click **OK** to proceed.
65. If the chosen setting is accepted click **Yes** to confirm the setting. It will take effect after the unit reboots.
66. Choose **Color** settings.
67. Click **Appearance** button ([Figure 4.23](#)), and select either Windows Classic Style or the new Windows XP style, then click **OK**.



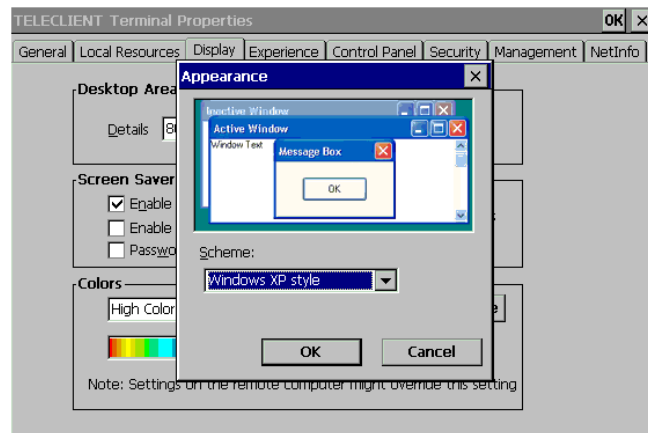


Figure 4.23 Desktop Appearance Settings

68. Click **Next** to continue setting up the terminal.

### 4.1.3. Control Panel

Control Panel should appear ([Figure 4.24](#)). Depends on the configuration and model, the icons may appear differently.

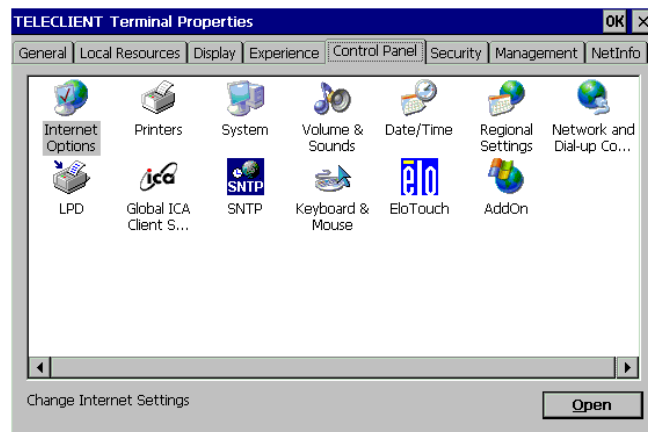


Figure 4.24 Control Panel

#### ◆ LPD (Line Print Daemon) Printer Setup

69. Double click on the **LPD** icon ([Figure 4.25](#)).

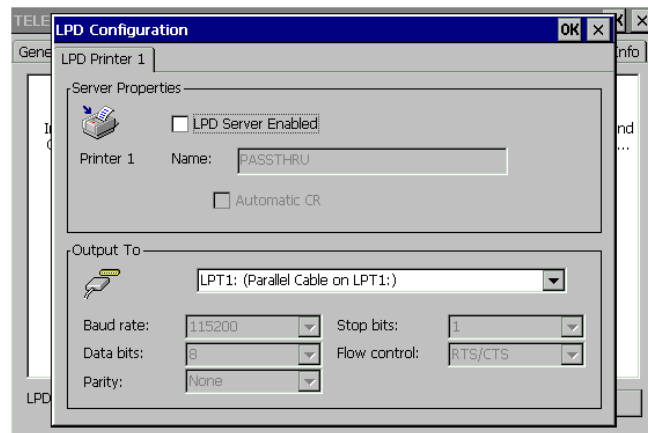


Figure 4.25 LPD Printing Setup

70. Check ' **LPD Server Enabled**' to enable LPD service.

---

**NOTE: LPD CAN BE USED ONLY WITH THE LPT PORT OF A TELECLIENT.**

---

71. Assign the printer name. The name of the printer is a virtual port. Virtual port is a logical device assigned when you set up LPD services on your server. The default for this field is PASSTHRU. The Printer Name is case sensitive field.

---

**NOTE: THIS SERVICE WILL NOT WORK IF THINPRINT IS BEING USED.**

---

72. Click **OK** to confirm.

### ◆ Elo Touchscreen Setup

73. Double click the **Elo** icon ([Figure 4.26](#)).

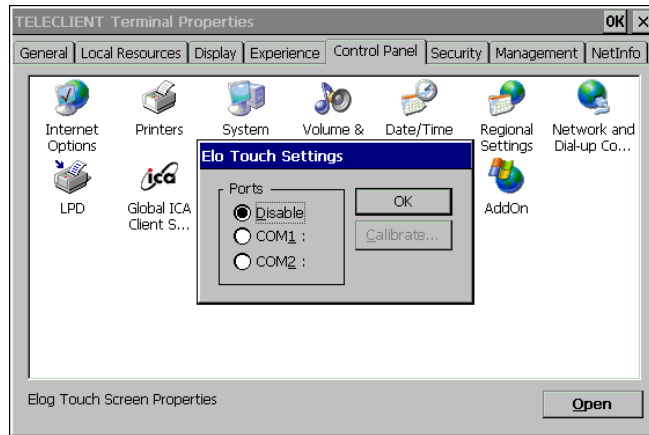


Figure 4.26 Elo Touchscreen Setup

74. TeleCLIENT TC7530T uses **COM2** by default.

75. Click Calibrate.

76. Follow the on-screen instruction then click **OK**.

◆ **Global ICA Client Setup**

77. Double click the Global ICA Client Settings icon

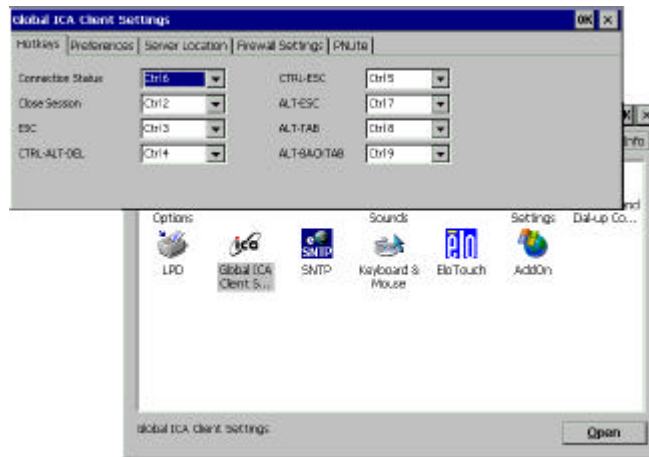


Figure 4.27 Global ICA Client Setup

78. Setup the Hotkeys as desired ([Figure 4.27](#)).

79. Click on the Preference tab ([Figure 4.28](#)). If desired type in the serial number of the terminal and the terminal name or leave the default name on. Select a desired color settings then click on the next tab.

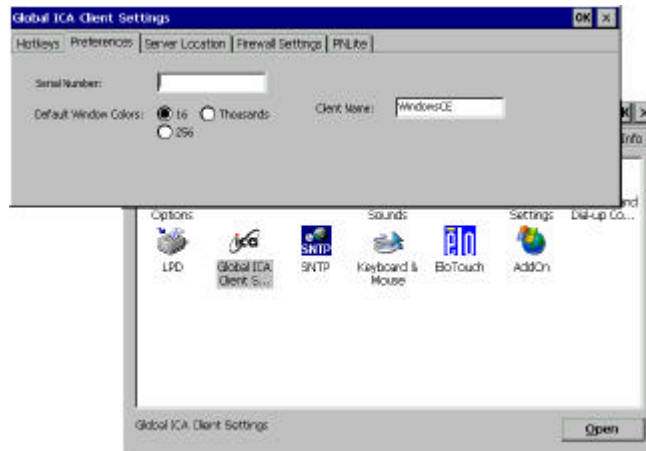


Figure 4.28 Global ICA Client Settings-Preference Tab

80. On the server location tab ([Figure 4.29](#)),

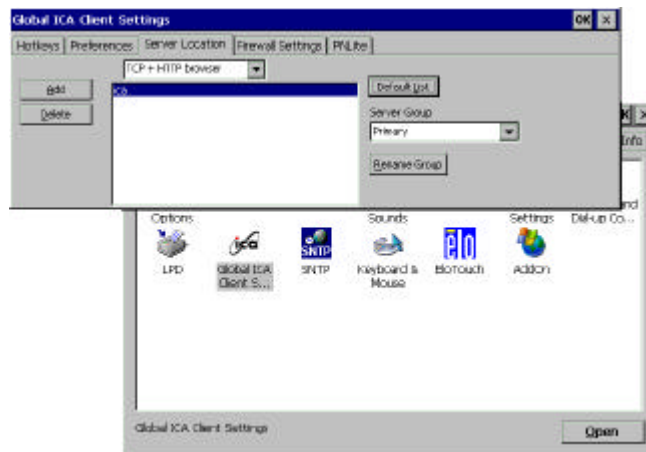
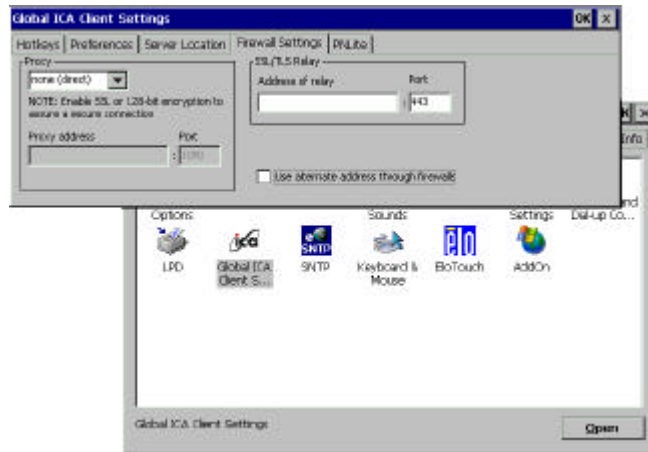


Figure 4.29 Global ICA Client Settings-Server Location Tab

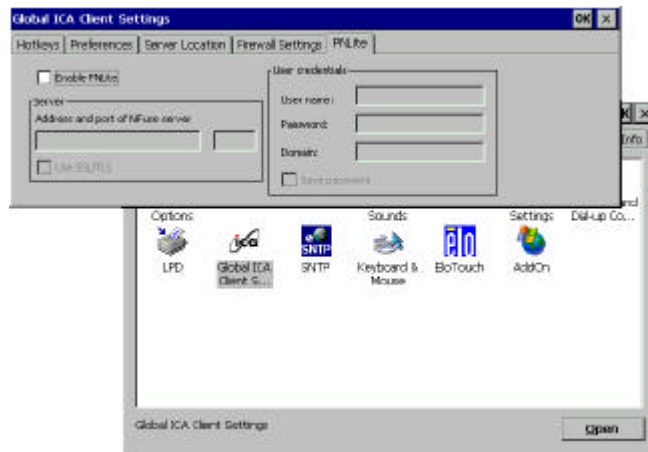
81. First choose the browser type. This will decide what type of servers should be detected.
82. Click **Default List** button to list available servers. This will display a warning message that the current list will be erased. Click **Yes** to proceed.
83. If no server was detected click **Add** button to add a server to the list.
84. Select the type of the server group, and rename the group if desired. To rename, click on the **Rename Group** button and click **OK**.
85. A server name may be deleted from the list: Highlight the server to be deleted and click **Delete** button. When prompt click **Yes** to confirm.

86. On the Firewall Settings tab ([Figure 4.30](#)),



**Figure 4.30 Global ICA Client Settings-Firewall Settings Tab**

87. Click on PNLite tab ([Figure 4.31](#)). PNLite is a feature that allows the client to connect via Citrix NFuse without a local web browser. It can obtain connection information for a particular user from an NFuse server and add those connections to the normal WBT list of connections, as if they'd been added by hand using the local UI.



**Figure 4.31 Global ICA Client Settings-PNLite Settings Tab**

88. To use **PNLite** feature, check the '**Enable PNLite**' box, type in the server information, and fill in the **User Credential** information.

89. Click **OK**.

## ◆ Printer Setup

90. Double click on **Printers** icon.

91. Double click on **Add Printer** icon.

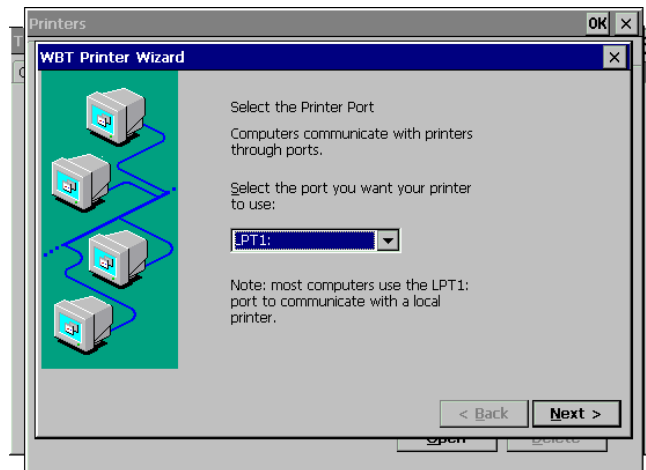


Figure 4.32 Printer Setup – Port Selection

92. Select a port the printer is connected to ([Figure 4.32](#)).

93. Select **Manufacture** of the printer and the **Model Name** ([Figure 4.33](#)).

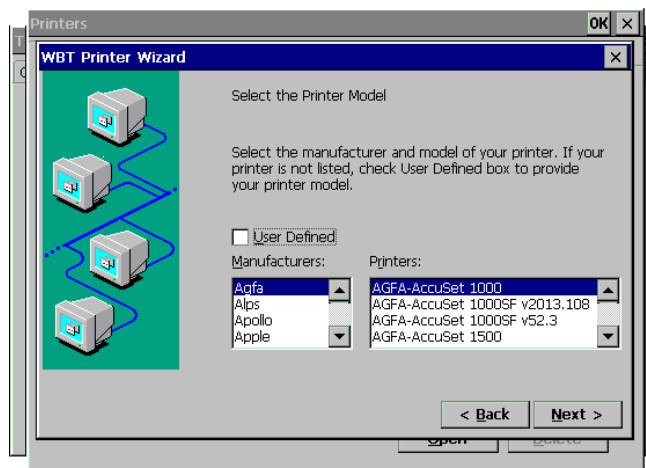


Figure 4.33 Printer Setup – Manufacturer and Model

94. If the desired manufacturer and model is not listed check the **User Defined** box. Click **Next**, and type in the manufacturer and the model name, and then click **Next**.

95. Type in the Printer Name, then click Next ([Figure 4.34](#)).

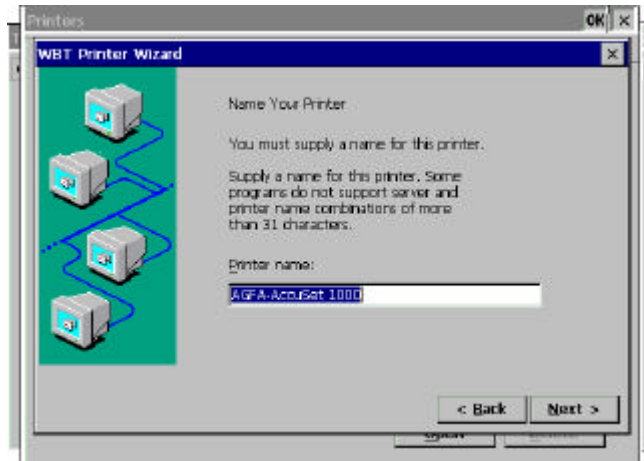


Figure 4.34 Printer Setup – Printer Name

96. If there are more printers to be added check Yes and click **Next**. Otherwise, check **No** and click **Next**.

97. Click **Finish** ([Figure 4.35](#)). The new printer icon should appear on the **Printers** screen. Click **OK**.

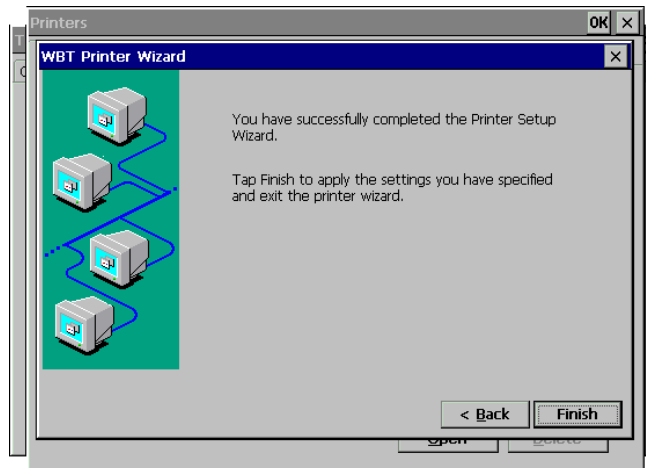


Figure 4.35 Printer Setup – Finish

98. To delete a printer, simply highlight the printer and click **Delete** button.

## ◆ Internet Options (Only on TC7530W Series)

99. Double click on **Internet Options**.

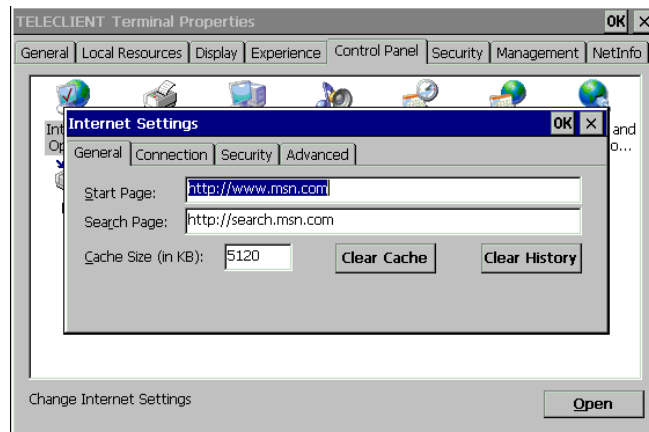


Figure 4.36 Internet Options

100. Type in the **Start Page** and **Search Page**, or leave the default URL ([Figure 4.36](#)).
101. Set the **Cache** size or leave the default value (recommended).
102. Click on Connection tab ([Figure 4.37](#)).

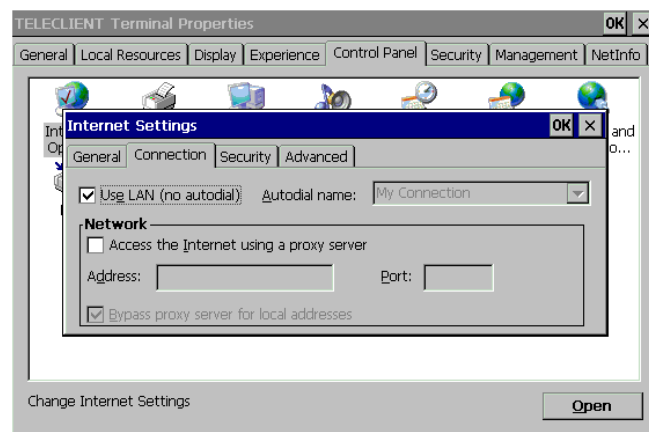


Figure 4.37 Internet Options - Connection

103. Check ' **Use LAN (no autodial)**' box if using LAN. Otherwise, uncheck the box and type in the **Autodial name**.
104. If the terminal is connected through a proxy server check ' **Access the Internet using a proxy server**' and type in the necessary information. Then click **OK**.



105. On **Security** tab, check all the security options then click **OK**.

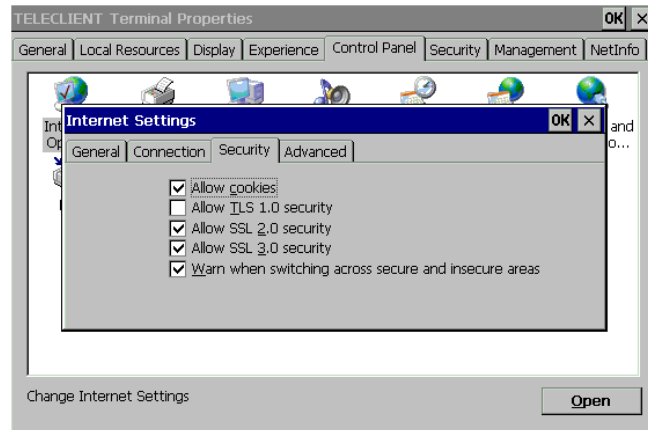


Figure 4.38 Internet Options - Security

106. On **Advanced** tab ([Figure 4.38](#)).

107. Select desired options then click **OK**.

### ◆ Volume and Sounds Setup

108. Double click on Volume & Sounds icon ([Figure 4.39](#))

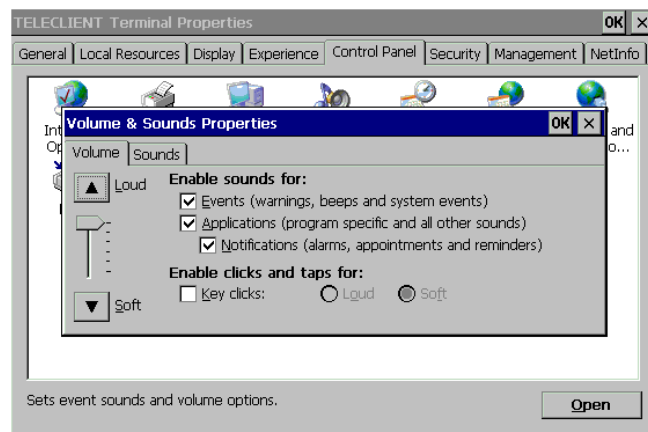


Figure 4.39 Volume and Sounds

109. Choose options as shown on the window, set the system volume at a desired level, and then click on **Sounds** tab.

110. Choose a sound scheme and click **OK** ([Figure 4.40](#)).

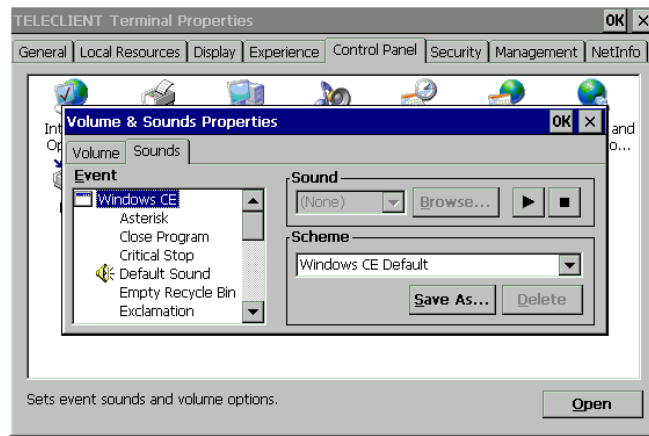


Figure 4.40 Sound Scheme

### ◆ Date and Time Setup

111. Double click on the **Date/Time** icon.
112. Set the date and time then click OK ([Figure 4.41](#)).

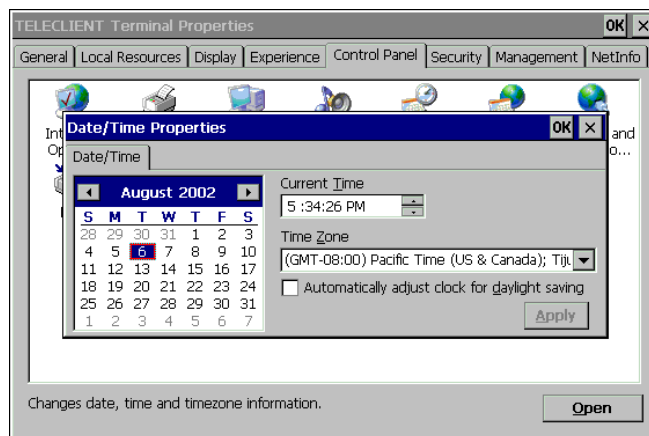
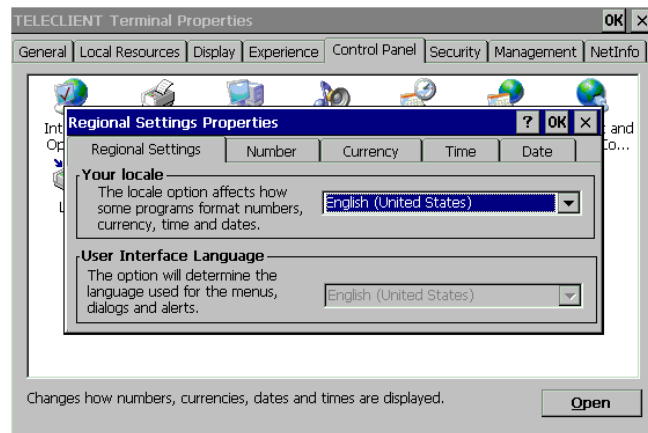


Figure 4.41 Date and Time

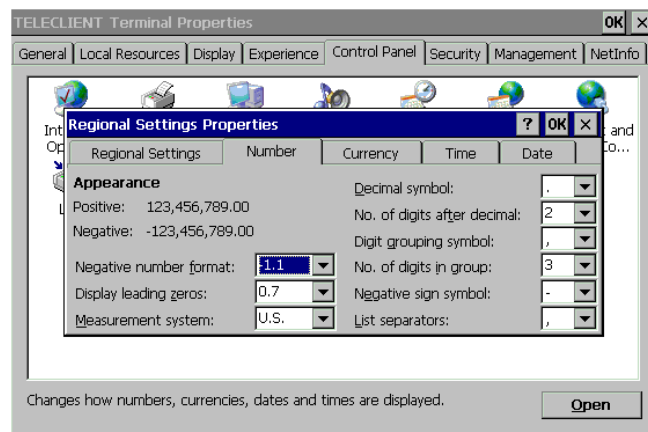
### ◆ Regional Settings

113. Double click on the Regional Settings icon ([Figure 4.42](#)).



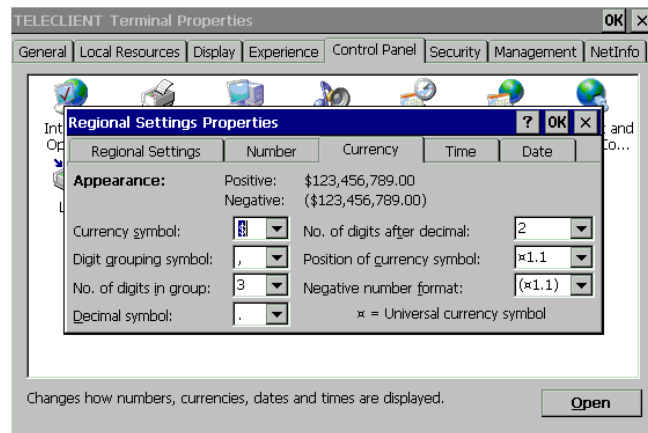
**Figure 4.42 Regional Settings - Locale**

114. Select locale and click on the next tab, **Number** ([Figure 4.43](#)).



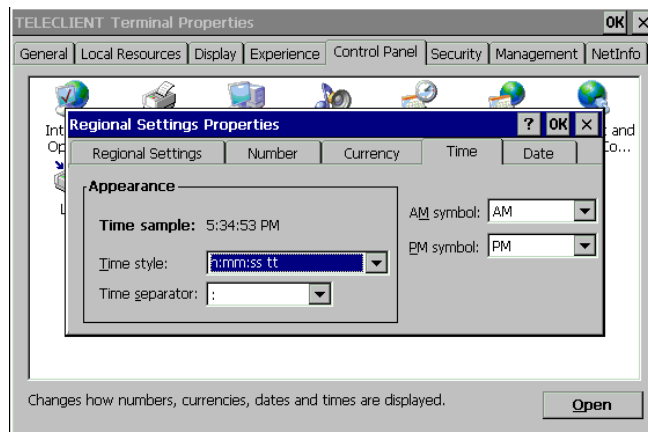
**Figure 4.43 Regional Settings - Number**

115. Select number systems then click the next tab, **Currency** ([Figure 4.44](#)).



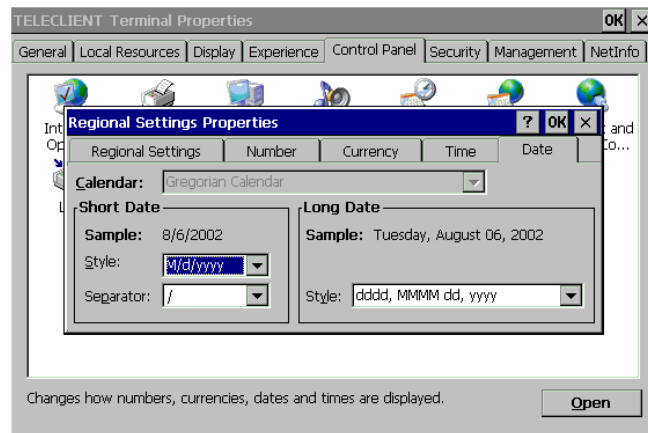
**Figure 4.44 Regional Settings - Currency**

116. Select currency settings then click the next tab, **Time** ([Figure 4.45](#)).



**Figure 4.45 Regional Settings - Time**

117. Select the time format then click the next tab, **Date** ([Figure 4.46](#)).



**Figure 4.46 Regional Settings - Date**

118. Select the date format then click **OK**.

◆ **Network and Dial-up Connections**

Refer to section [1.1.1 Network Settings](#).

◆ **SNTP Settings**

119. SNTP is a **Simple Network Time Protocol**. It allows the terminal to synchronize time with available time-servers on Wide Area Network ([Figure 4.47](#)).



**Figure 4.47 SNTP Settings**

120. Select any of the displayed time-server then click **Synchronize**.

121. Unlisted time-server can be added as well. Click **Add** then type in the server IP address or the host name.
122. Click **OK**.

### ◆ Keyboard and Mouse Setup

123. Double click on Keyboard and Mouse (Figure 4.48).

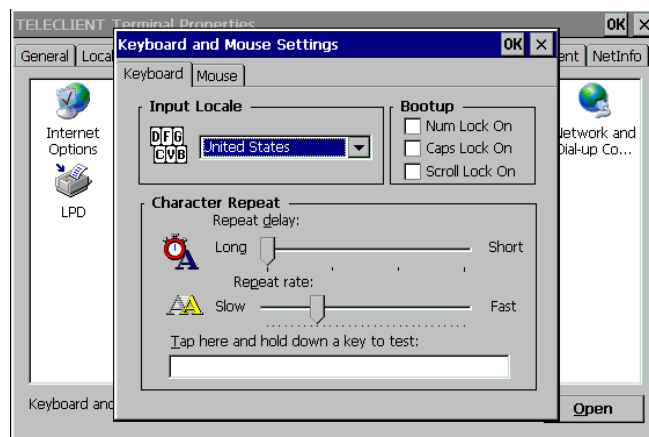


Figure 4.48 Keyboard

124. This section changes the following keyboard characteristics to match the user's own keyboard and typing habits:
  - Keyboard Locale - The language used by the keyboard.
  - Character Repeat - The repeat delay of a keyboard character (i.e., length of time elapsed before a character is repeated when a key is pressed).
  - Repeat Rate - The rate at which the keyboard repeats characters.
  - Num Lock On/Off at Boot-up option
  - Cap Lock On/Off at Boot-up option
  - Scroll Lock On/Off at Boot-up option
125. Select **Left-handed** or **Right-handed** mouse, select the **pointer speed** then click **OK**.



## **Appendix F. User Manual**

---

### **◆ Power Button Control**

126. Double click on Button Control icon.
127. Select **Instant Power Off** or **4 Seconds Delay** power button option.
128. To disable the power button, simply check the option box and click **OK**.

Click **Next** to proceed with the **WBT Setup Wizard** .

Click **Finish** to complete the setup. You are now ready to create network connections and connect to the network.



### 4.2. Setting TeleCLIENT TC7530 Properties

All terminal properties can be modified in **TeleCLIENT Terminal Properties** window.

---

**NOTE: WHEN MAKING CHANGES IN THE TELECLIENT TERMINAL PROPERTIES WINDOW, CLICK OK TO SET THE NEW VALUES, AND CLICK X AT ANY TIME TO CANCEL AND RETURN TO THE TELECLIENT CONNECTION MANAGER WINDOW.**

---

The TeleCLIENT Terminal Properties window includes the following tabs:

- **General**  
Displays product, copyright information, terminal name, and resets the terminal to factory defaults.
- **Local Resource**  
Configure sound control and peripheral devices.
- **Display**  
Configure display settings, screen saver, and desktop appearance.
- **Experience**  
Configure network connection speed, start up delay setting (searching for networks), and miscellaneous settings.
- **Control Panel**  
Configure the Internet options, touchscreen, printers, Global ICA settings, system information, volume and sounds, date/time, regional settings, network and dial-up settings, SNMP, keyboard and mouse, add-on devices, and power button control.
- **Security**  
Configure various security settings.
- **Management**  
Configure SNMP agent, and update software and firmware.
- **NetInfo**  
Display the network status, and provides Ping function.



### 4.2.1. General Tab

To start the **TeleCLIENT Terminal Properties**, while the **TeleCLIENT Connection Manager** is displayed, Press <F2> on the TeleCLIENT TC7530 keyboard. The **TeleCLIENT Terminal Properties** window will appear ([Figure 4.49](#)).



Figure 4.49 TeleCLIENT Terminal Properties – General Tab

◆ **To restore the factory default settings, complete the following steps:**

1. Check the box, ' Reset the terminal to factory-default property settings.'
2. Click **Yes** when prompt.

---

**NOTE: WHEN YOU RESTART THE TELECLIENT TC7530 AFTER RESETTING THE FACTORY DEFAULTS, YOU MUST USE THE SETUP WIZARD AGAIN. REFER TO SECTION 1.1 - TELECLIENT SETUP WIZARD.**

---

◆ **Terminal Name**

Assign the terminal name in the box or leave the default name, but **DO NOT** leave it blank.

## 4.2.2. Local Resources Tab

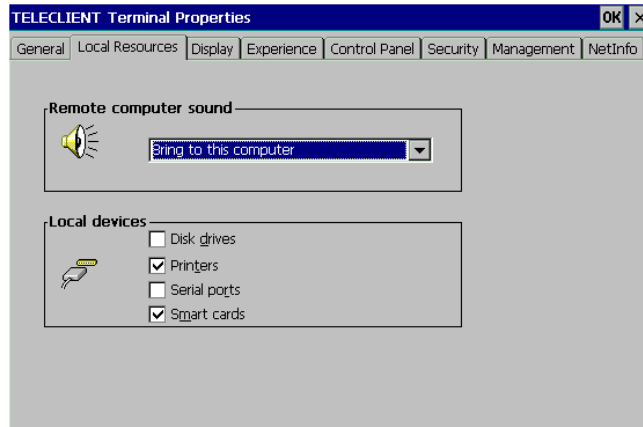


Figure 4.50 Local Resources

### ◆ Sound Option

Select the sound option ([Figure 4.50](#)).

### ◆ Local Devices

Check all the devices attached to the terminal to enable them.

## 4.2.3. Display Tab

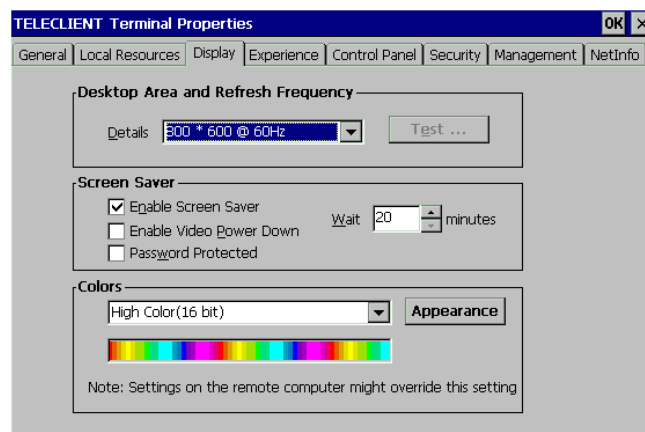


Figure 4.51 Display

## Appendix F. User Manual

### ◆ Display Area and Refresh Frequency

For standard TeleCLIENT TC7530, there is only one resolution setting, 1024 x 768 @ 60Hz, but for the models with analog-digital converters have more resolutions to choose from. Select a resolution and color settings ([Figure 4.51](#)).

### ◆ Screen Saver

1. To enable Screen Saver, check the box, and set the duration of No-Activity in minutes before the Screen Saver starts.
2. Check the box, ' Enable **Video Power Down**' if desired in addition to Screen Saver.
3. Check the box, ' **Password Protected**' , to set a password protection upon recovery form the Screen Saver mode.

### ◆ Colors and Appearance

Click **Appearance** button ([Figure 4.51](#)), and select either Windows Classic Style or the new Windows XP style, then click **OK**.

## 4.2.4. Experience Tab

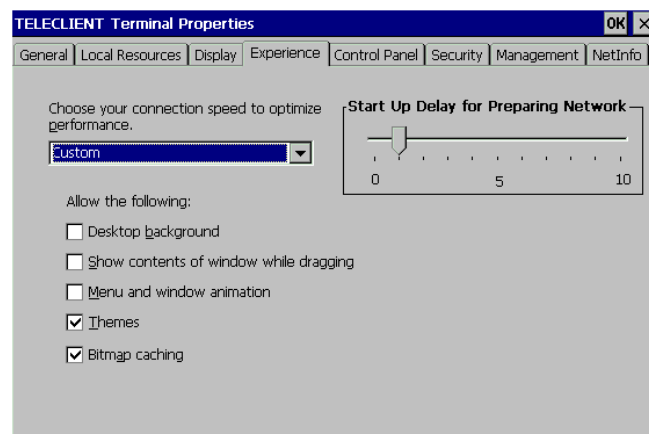


Figure 4.52 Experience

### ◆ Network Connection Speed

Select the network connection speed to optimize the terminal operation ([Figure 4.52](#)).

## ◆ Desktop Properties

Select the options to be enabled on the desktop during RDP sessions.

## ◆ Start Up Delay for Preparing Network

Set this delay time according to the tendency of the network status. In a normally congested network will require more time to establish network communications, and in a network with less traffic will require less time to establish network communications. Setting this too low may cause some difficulty establishing network communications.

## 4.2.5. Control Panel Tab

Refer to section [1.1.3, Control Panel](#).

## 4.2.6. Security Tab

This section sets up security on the terminal access ([Figure 4.53](#)).

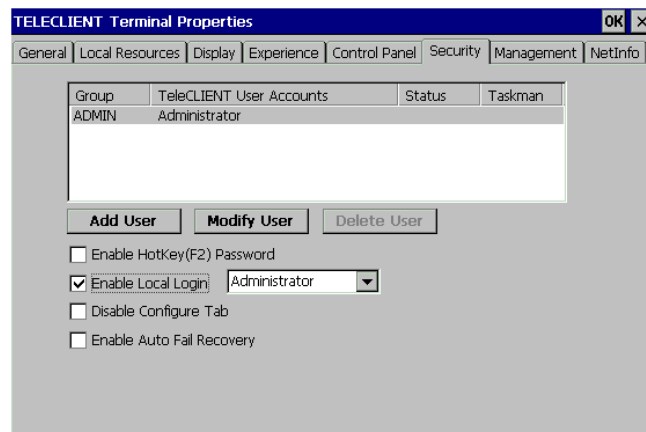


Figure 4.53 Security

## ◆ Adding User

1. To add a user to the list of permitted users, click Add User button.

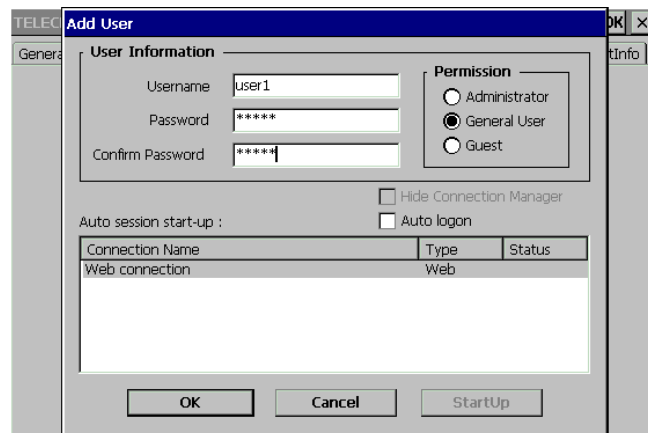


Figure 4.54 Security-Add User

2. Type in the **User Name** and **Password** ([Figure 4.54](#)).
3. Select the **Permission** level.
4. Check the box, '**Auto logon**' , if the user should be logon to a session highlighted in the box below.
5. To bypass the connection manager screen on startup, click on **StartUp** button, and check the box, '**Hide Connection Manger**' .
6. Use **Modify User** button to edit these settings after this initial setup, and **Delete User** button to delete a user.
7. Click **OK**.

### ◆ Terminal Properties Window Protection

Check the box, '**Enable HotKey (F2) Password**' , to stop users from going into the properties window.

### ◆ Enable Local Login

Check this box to limit the terminal usage to the permitted users.

### ◆ Disable Configure Tab

Check this box to stop users from going into the **Connection Manager Configure** tab and making changes to session properties.

### ◆ Enable Auto Fail Recovery

In an unexpected power down situation, this feature allows the users to automatically log back on to the session.

### ◆ Hide Web Connection

Check this box to stop users from making changes to the **Internet Configuration**.

## 4.2.7. Management Tab

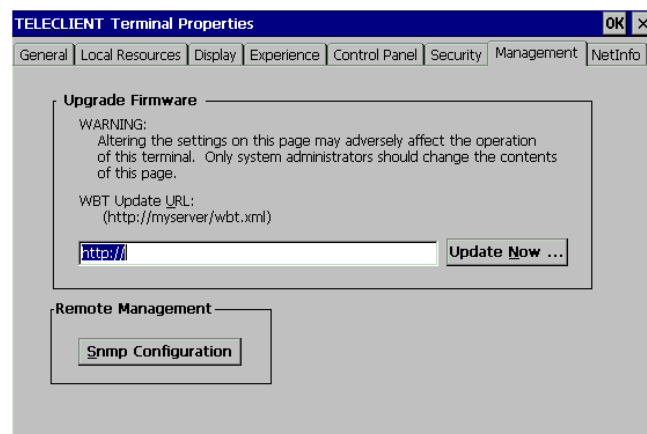


Figure 4.55 Management

[Figure 4.55](#) illustrates the Management tab, which displays the support for TeleCLIENT software update functionality. The property page components are as follows:

- **Edit Box:** Contains the Uniform Resource Locator (URL) for the update package used by TeleCLIENT for software updates. Supported protocols are http:// and ftp://.
- **Update Now...button:** Used to immediately perform a manual software update, using the indicated URL.
- **SNMP Configuration.**

### ◆ Software/Firmware Update

---

**NOTE: THIS WILL FORCE A RESET OF THE TERMINAL.**

---

To update the software/firmware of the terminal, type in the URL of the web server containing the new image then click **Update Now** button.

---

**NOTE: TO ENSURE CORRECT IMAGE UPDATE, PLEASE VISIT [WWW.TELEVIDEO.COM](http://WWW.TELEVIDEO.COM) OR CONTACT TELEVIDEO TECH SUPPORT.**

---

### ◆ SNMP Configuration

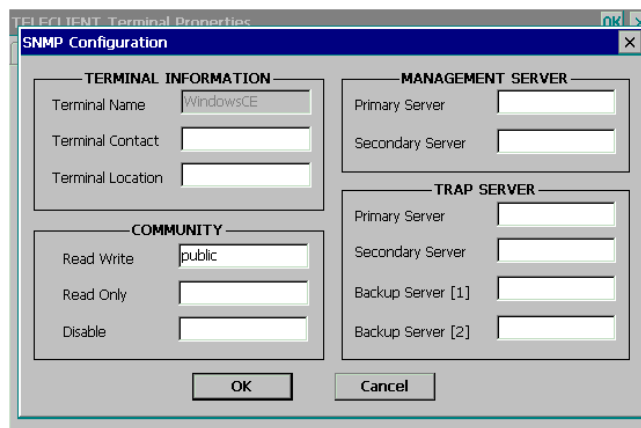


Figure 4.56 Management - SNMP

1. To configure SNMP settings, click **SNMP Configuration** button ([Figure 4.56](#)).
2. Enter the contact for the terminal (usually the user of the terminal) and the location.
3. Community section refers to the SNMP group definition. Enter the group name.
4. Enter all the necessary and appropriate server names in each category.
5. Click **OK**.

## 4.2.8. Net-Info Tab

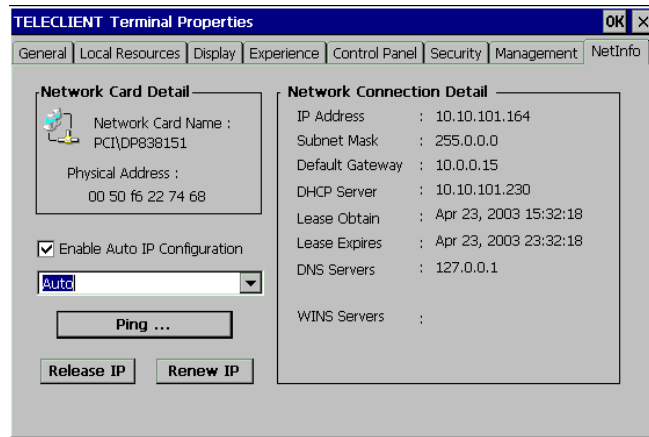


Figure 4.57 NetInfo

This tab displays the hardware address (MAC Address) and other Network information ([Figure 4.57](#)).

### ◆ Ping

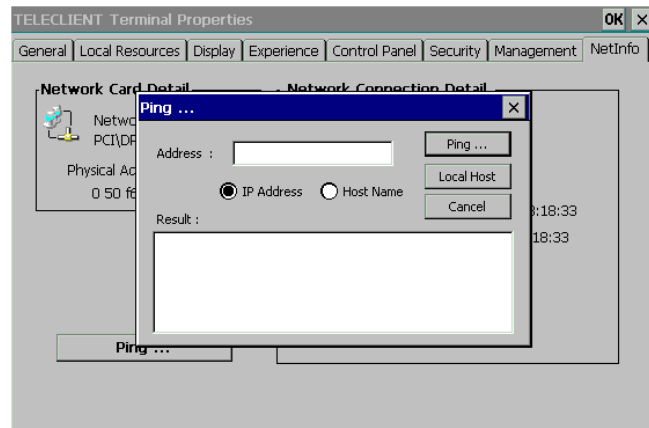


Figure 4.58 NetInfo – Ping

This command allows the administrator to check the network connections ([Figure 4.58](#)).

This completes the terminal properties setting. Please continue to the Operation section of the manual to configure terminal service sessions.





## Appendix F. User Manual

FCC ID : PFMTC7530  
Report No:E03.0820.FCC.444N  
Issue of Date: August 20, 2003

### ◆ Auto IP Configuration

This option will assign a **temporary IP address** to shorten the pause when the unit cannot get an IP address immediately.

---

**NOTE: THIS IP ADDRESS WILL MOSTLY NOT WORK WITHIN THE CURRENT NETWORK. PROPER IP ADDRESS MUST BE ASSIGN TO THE UNIT BY THE NETWORK ADMINISTRATOR OR BY DHCP SERVER.**

---

The drop-down box is to select the network speed.

### ◆ IP Release/Renew

**IP Release** button will release the current IP address, and **IP Renew** button will acquire a new IP address.

---

**NOTE: IP RENEW BUTTON ONLY WORKS IN DHCP ENVIRONMENT.**

---

## 5. Operation

Operating the TeleCLIENT TC7530 includes using the **TeleCLIENT Connection Manager** to set up network connections, and the hot key combinations to switch between active sessions. This chapter explains how to use the **TeleCLIENT Connection Manager** and operation hot keys.

It includes the following sections:

- Powering On
- Using the **TeleCLIENT Connection Manager**
- Connecting to a Network Server
- Using the TeleCLIENT TC7530 Hot keys
- Logging Off

### 5.1. Powering On

The TeleCLIENT TC7530 Windows-based terminal is powered by an AC to DC adapter, which connects to the rear panel DC-in jack. Notice the **ON/OFF** switch located on the front panel (refer to Hardware Installation). Use this switch to power the TeleCLIENT TC7530 on and off.

To power-off the TeleCLIENT TC7530, press the ON/OFF switch. To re-start, press the ON/OFF switch briefly.

**WARNING:** FOLLOW THE INSTRUCTIONS ABOVE CAREFULLY TO AVOID ACCIDENTAL POWER SHUT-OFF TO THE TELECLIENT TC7530.

---

### 5.2. Using the TeleCLIENT Connection Manager

The **TeleCLIENT Connection Manager** allows a user to create and manage TeleCLIENT TC7530's network connections. Whenever the TeleCLIENT TC7530 starts up, the **TeleCLIENT Connection Manager** window automatically displays ([Figure 5.1](#)) unless it is an initial start up or ' **auto-start connection**' was set by a user. This window will also appear whenever user logs off or disconnect from a session.

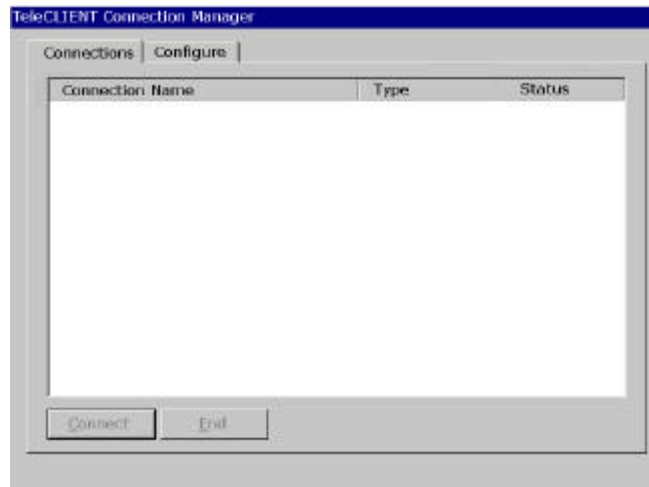


Figure 5.1 TeleCLIENT Connection Manager Window

Notice that the **TeleCLIENT Connection Manager** window contains two tabs:

- **Connections** - Used to connect TeleCLIENT TC7530 to a network and also end a network connection
- **Configure** - Used to add, edit and delete network connections. User can also set the default or auto-start network connection.

### 5.3. Configuring Network Connections

Each connection uniquely identifies a host (server) and the client (terminal) used to make the connection, based on the type of connection used. User can create, edit and delete network connections in the **TeleCLIENT Connection Manager** window. To begin:

1. Select the **Configure** tab in the **TeleCLIENT Connection Manager** window. The Configure window appears ([Figure 5.2](#)).

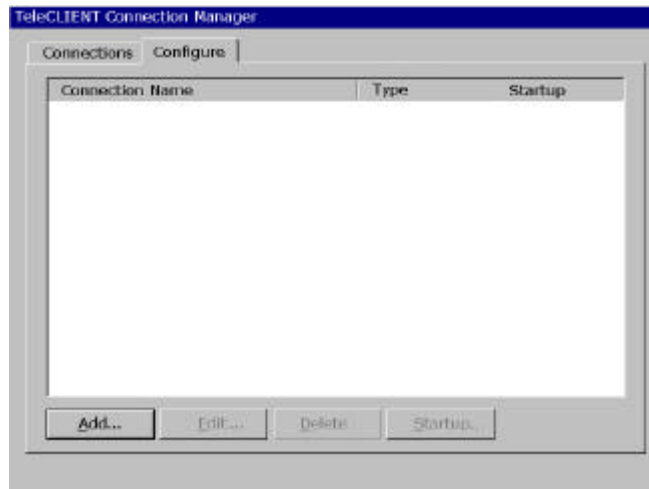


Figure 5.2 Configure Tab Window

### 5.3.1. Creating a New Connection

To create a new connection, complete the following steps:

1. Click **Add** in the Configure window. The New Connection window appears ([Figure 5.3](#)).

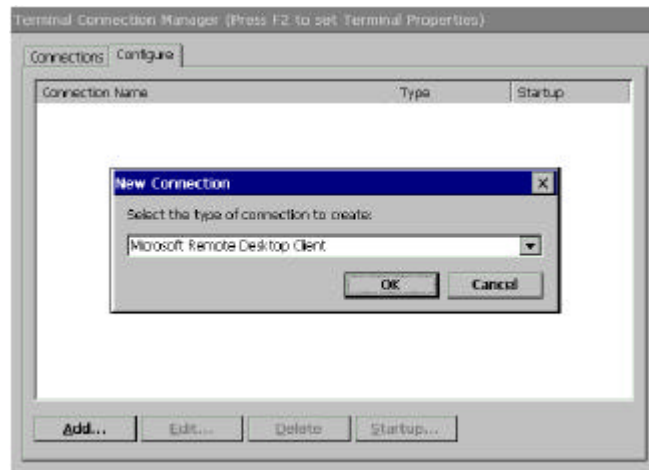


Figure 5.3 New Connection Window

2. Choose one of the following connection protocols for the new connection:
  - Citrix Independent Computing Architecture protocol (ICA)

- Microsoft Remote Desktop Protocol (RDP)
- Terminal Emulation Client

3. To return to the previous window, click **Cancel**, and Click **OK** to proceed.

Once a connection is created, it will also be listed in the **Connection Name** list. In [Figure 5.4](#), the active connection is an RDP type.

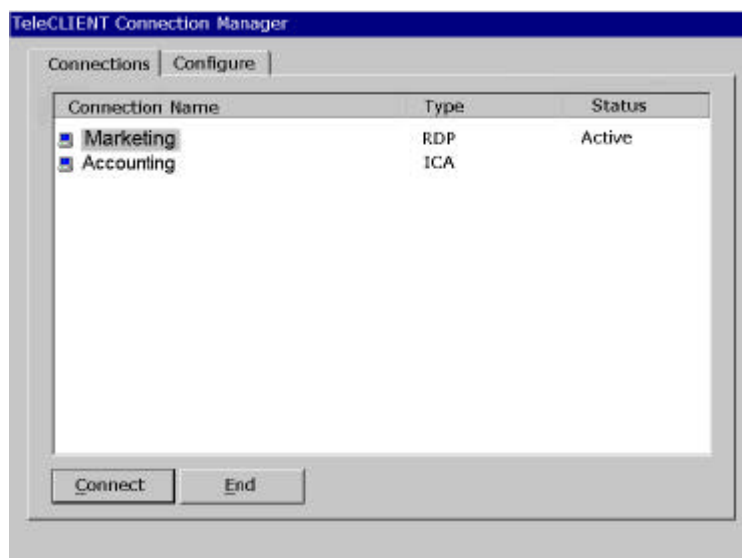


Figure 5.4 Connection Type Defined in TeleCLIENT Connection Manager

---

**NOTE:** THE REMAINDER OF THIS PROCEDURE DEPENDS UPON THE TYPE OF CONNECTION USED AS EXPLAINED BELOW.

---

### ◆ Adding an ICA Client Connection

To add an ICA client connection, complete the following steps:

1. Select 'Citrix ICA Client' in the **New Connection** window. The Specify Connection Type window appears ([Figure 5.3](#)).

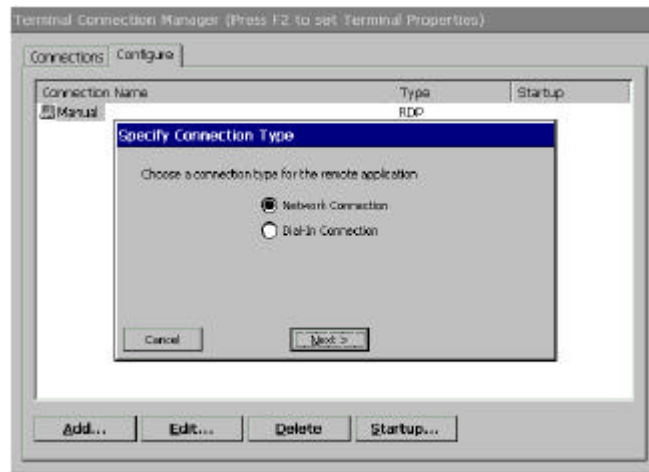


Figure 5.5 Specify Connection Type Window

2. Specify the type of connection ([Figure 5.5](#)):

- ‘ **Network Connection** ’ - Requires an Ethernet connection.
- ‘ **Dial-in Connection** ’ - Requires a modem.

3. Click **Next**.

For “Network Connection” part, skip to [Step 12](#).

4. In **Dial-In Connection** box, enter the area code, phone number, country, and check the box if it needs to dial the area code for the connection ([Figure 5.6](#)).

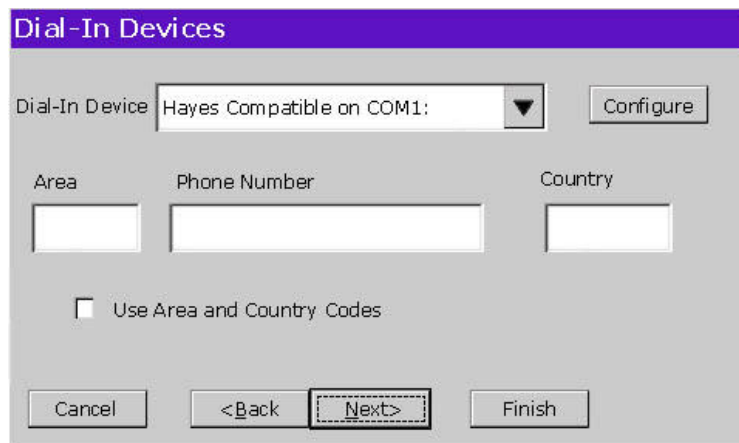


Figure 5.6 Dial-In Device Setting

5. Select the hardware connection from the drop-down box.
6. Click **Configure**.
7. Under the **Port Settings** tab, set Manual dialing option and the terminal screen options ([Figure 5.7](#)).

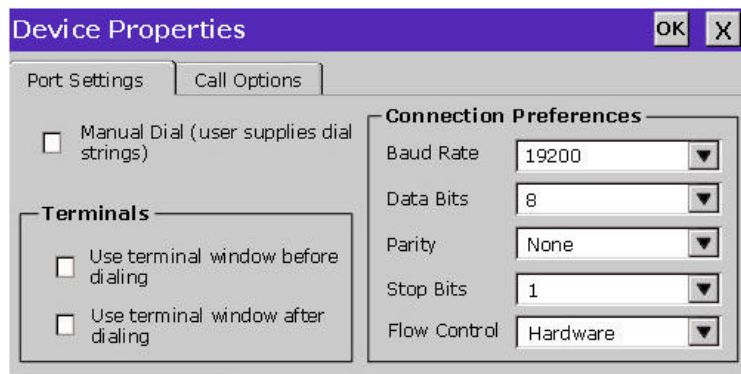


Figure 5.7 Port Settings

8. Set the modem connection by filling in the **Connection Preferences** boxes.
9. Click on **Call Options** tab ([Figure 5.8](#)).

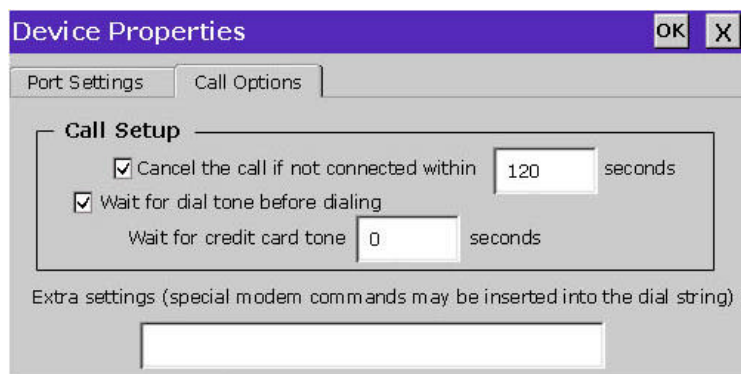


Figure 5.8 Calling Options

10. Set the calling options then click **OK**.
11. Click **Next**.

12. The software will now search for and identify all of the available Citrix servers or published applications. Follow the prompts to select the server or application to be used ([Figure 5.9](#)). Dial-up setup does not need this step.

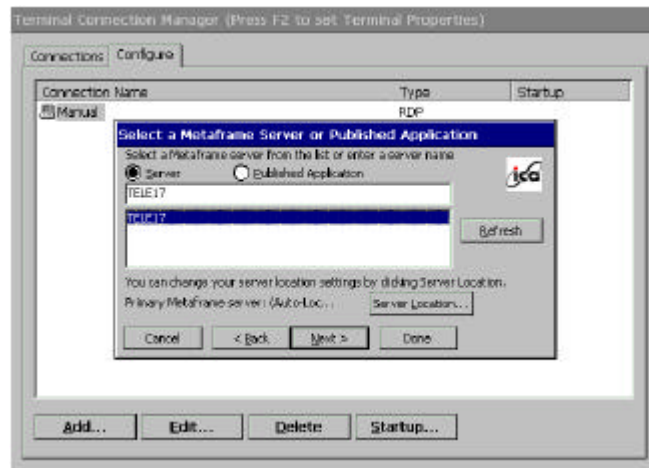


Figure 5.9 Select a Citrix Server or Published Application

13. For an additional search for Servers or Application hosts, click **Server Location** button ([Figure 5.10](#)). This narrows the server search criteria. Follow the prompts to setup the parameter.

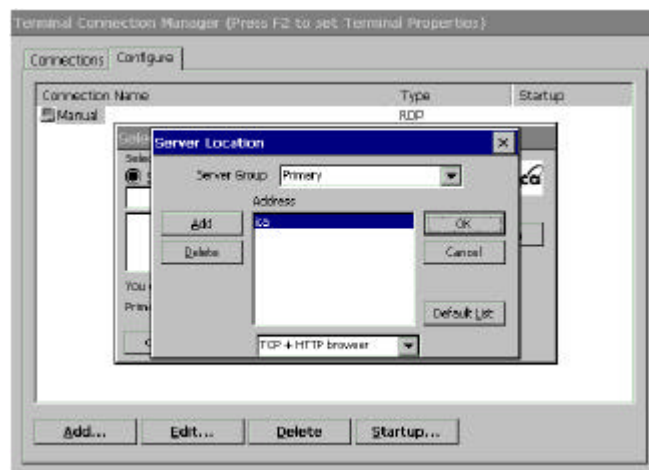


Figure 5.10 Server Location

14. Click **OK** then click **Refresh** to start the search. If no server is listed try typing in the **IP address** of the known server.



15. Click **Next**.

16. The default server name will appear in the **Select a Title for the ICA Connection** window. This title may be changed at this time ([Figure 5.11](#)).

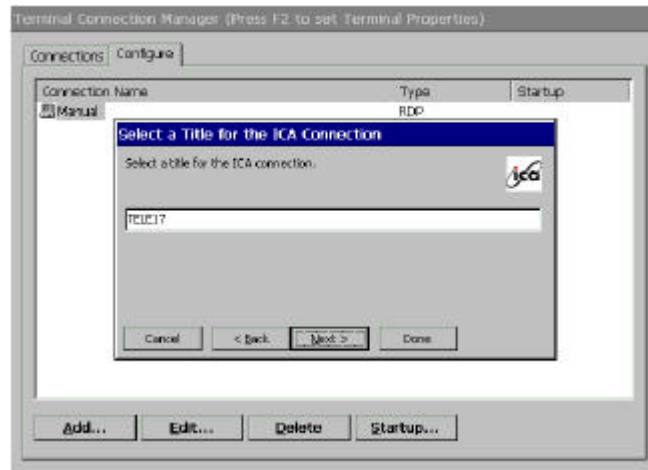


Figure 5.11 Select a Title for the ICA Connection Window

17. Click **Next**.

18. TC7530 can be configured to run the same application from the selected server. Type in the '**Command Line**' and '**Working Directory**', or leave blank to run the Windows Terminal Server desktop ([Figure 5.12](#)).

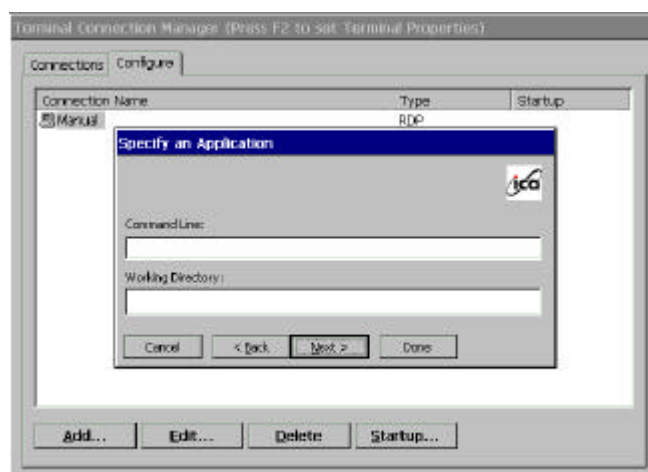


Figure 5.12 Specify an Application Window

19. Click **Next**.

---

**NOTE: THIS SCREEN MAYBE LEFT BLANK.**

---

20. To utilize **Specific Logon** procedure, type in username, password and domain to log on to the server. This saves users from logging on each and every time to the server or application ([Figure 5.13](#)).

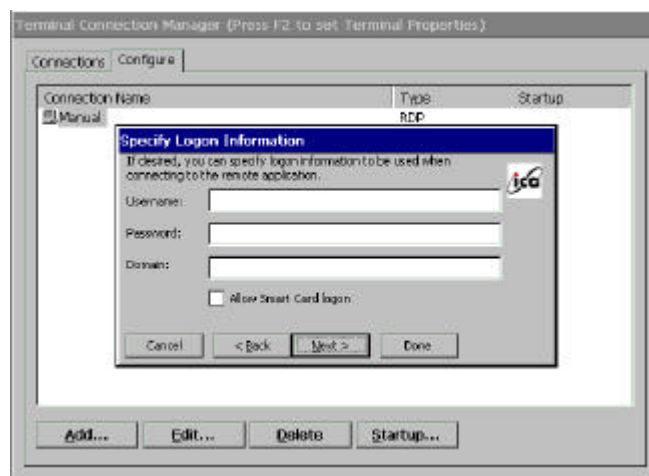


Figure 5.13 Specify Logon Information Window

21. If Smart Card logon is available on the network, check the box.

22. Click **Next**.

---

**NOTE: THIS SCREEN MAYBE LEFT BLANK.**

---

23. The Select Window Options window allows users to specify 16, 256, or Thousands colors for the ICA session ([Figure 5.14](#)).

---

**NOTE: 16BPP RESOLUTION MUST BE SELECTED AT TERMINAL PROPERTES**

---

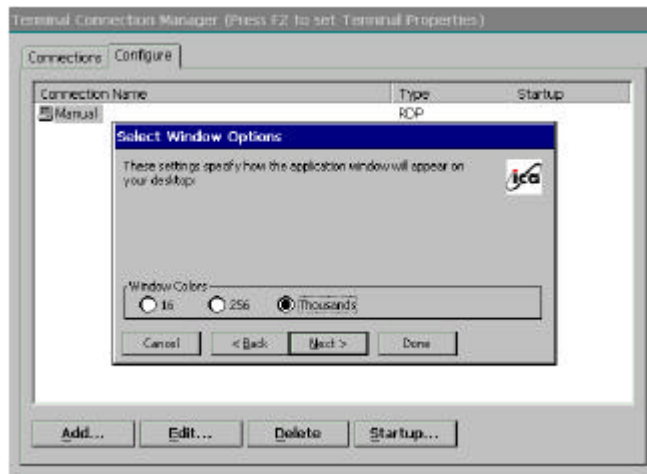


Figure 5.14 Select Window Options Window

24. Click **Next**.

25. The Compression, Cache and Sound window allows users to configure your ICA session depending on the speed of the connection ([Figure 5.15](#)).

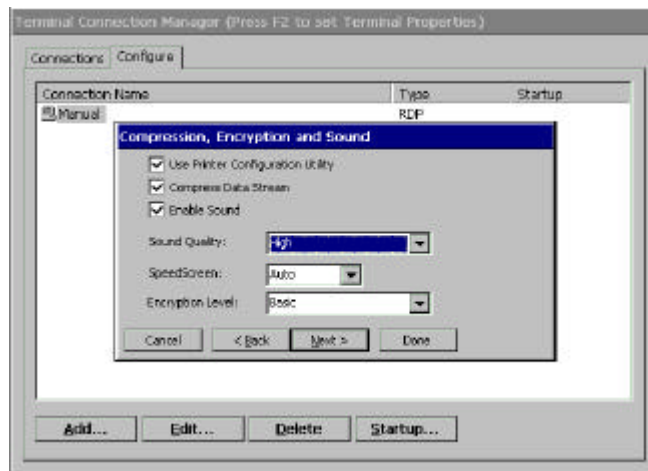


Figure 5.15 Compression, Cache and Sound Window

- 'Compress Data Stream' – Choose this setting if user is connected via a modem dial-up or a Wide Area Network (WAN).
- 'Cache' – Under all ICA sessions, caching is enabled. Therefore, this setting cannot be changed.

- ‘ Enable Sound’ –Choose this setting if user has a Local Area Connection, i.e. 10/100BaseT. Enabling sound over a modem dial-up or a WAN will cause problems due to an increased consumption of bandwidth.

26. Click **Next** (or click **Finish** if firewall configuration is not necessary. Skip the following procedure; it is ready to start a terminal session!).

27. Type in the **Proxy** settings then click **Done**.

### ◆ Adding an RDP Client Connection

1. Select ‘ Microsoft Remote Desktop Client’ in the **New Connection** window. The Windows Terminal Server (WTS) Connection Wizard window appears ([Figure 5.16](#)).

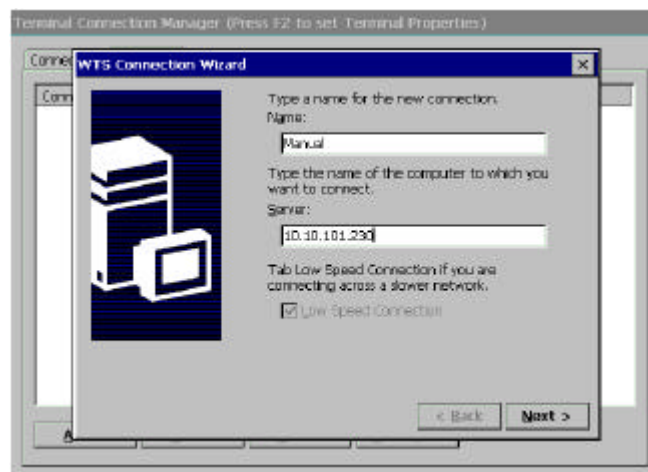


Figure 5.16 WTS Connection Wizard Window

2. Enter a name for the new connection in the ‘ **Name**’ field.
3. Enter the server name or **IP address** of the computer you wish to connect to in the ‘ **Server**’ field.
4. If the connection to the Server is through a low bandwidth line (WAN or serial line), check **Low Speed Connection**.
5. Click **Next**.

6. User's name can enter the username, password and domain to log on to the server. This saves users from logging on each and every time to the server or application ([Figure 5.17](#)).

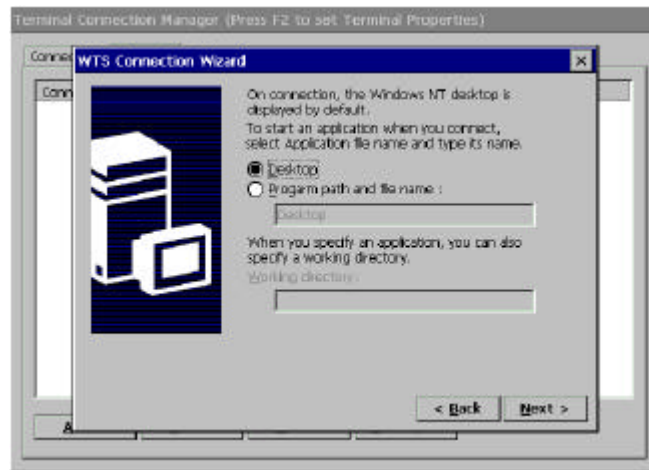


Figure 5.17 WTS Connection Wizard Window

7. Click **Next**.

---

**NOTE: THIS SCREEN MAYBE LEFT BLANK.**

---

8. User can configure TC7530 to run a selected application, instead of the desktop. Choose the '**Application File Name**'. Type in the '**Command Line**' and '**Working Directory**', or leave blank to run the Windows NT desktop ([Figure 5.18](#)).

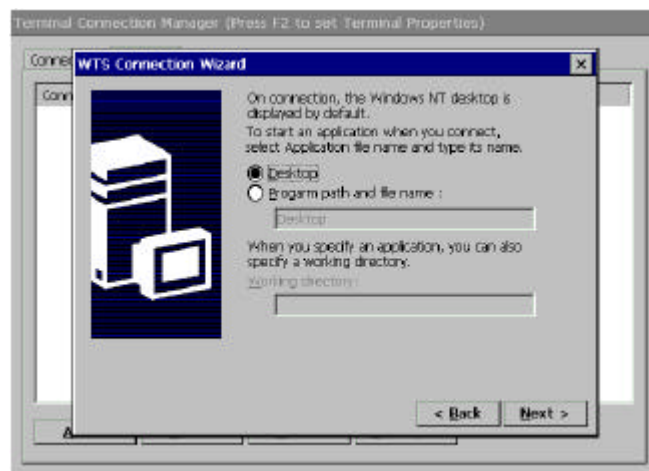


Figure 5.18 WTS Connection Wizard Window

9. Click **Next**.

---

**NOTE:** THIS SCREEN MAYBE LEFT BLANK.

---

10. Click **Finish** ([Figure 5.19](#)).

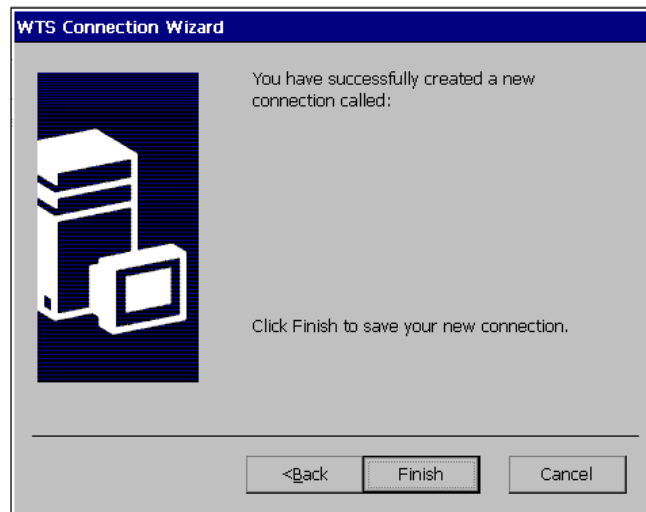


Figure 5.19 WTS Connection Wizard Window

### ◆ Adding a Terminal Emulation Client Connection

---

**NOTE:** FOR MORE INFORMATION, PLEASE REFER TO - [TERMINAL EMULATION USER' S GUIDE](#)

---

1. Select ' Terminal Emulation Client' in the **New Connection** window. The **TeleCLIENT Terminal Emulation Connection Properties** window appears ([Figure 5.20](#)).

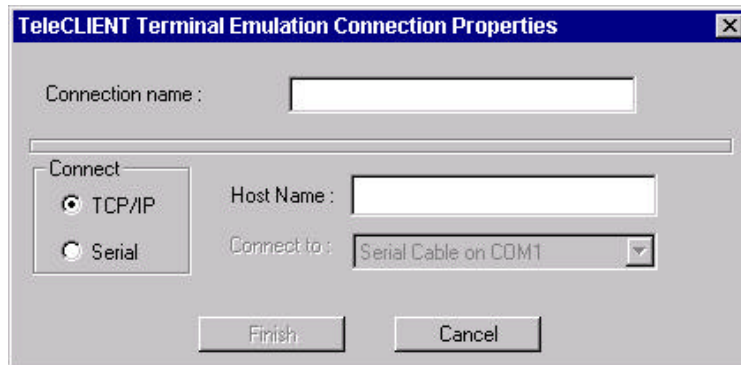


Figure 5.20 Terminal Emulation Connection Properties Window

2. Enter a name in the ' Connection Name' field.
3. Select the desired connection type, either TCP/IP or Serial.
  - If TCP/IP is selected, enter IP address of the host computer (server) in the Host Name field.
  - If Serial is selected, choose either of COM1 or COM, whichever is being connected.
4. Click **Finish**.

Once finished the TeleCLIENT Terminal Emulation setup, the terminal is now ready to connect to the server.

### 5.3.2. Editing Connections

The procedure for editing a connection varies, depending on the kind of network connection.

#### ◆ Editing an ICA Connection

To edit an ICA connection, complete the following steps:

1. Select the **Configure** tab in the **TeleCLIENT Connection Manager** window ([Figure 5.21](#)).

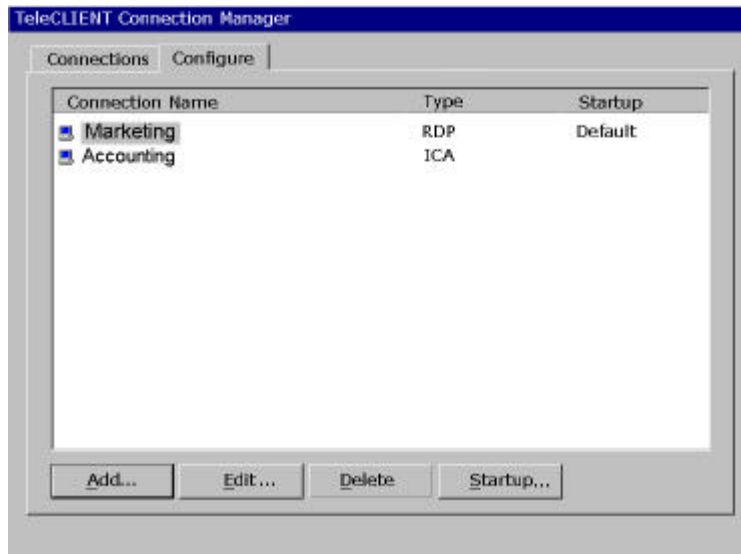


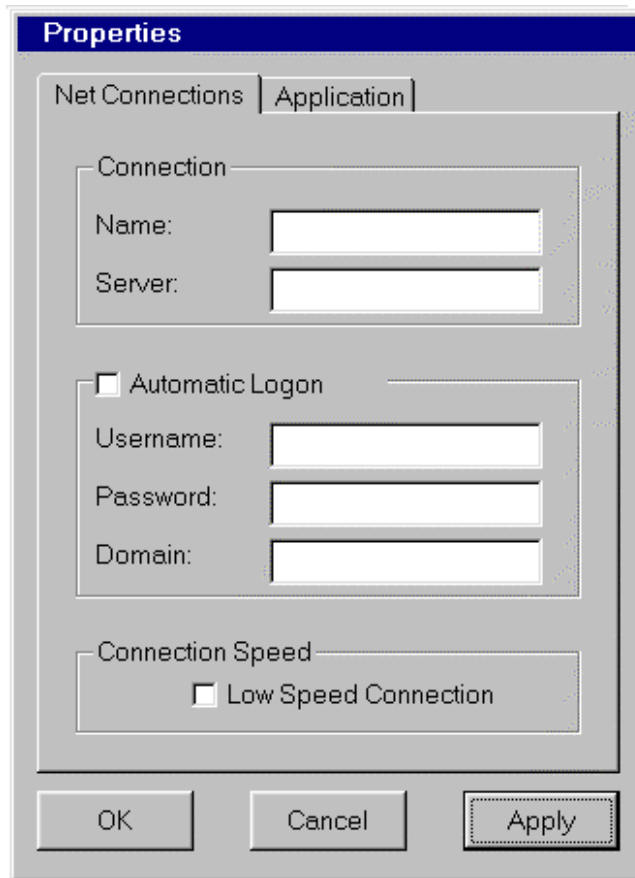
Figure 5.21 Configure Tab

2. Select the connection to be edited from the ' **Connection Name** ' list.
3. Click **Edit**.
4. Follow the prompts to select a Citrix Server or Published Application.

#### ◆ Editing an RDP Connection

1. Select the Configure tab in the TeleCLIENT Connection Manager window.
2. Select the RDP connection to be edited from the ' **Connection Name** ' list.
3. Click **Edit**. The Properties window appears ([Figure 5.22](#)).





**Figure 5.22 Properties Window**

Notice that the Properties window contains two tabs:

- Net Connections – Used to edit a connection and enable an automatic logon ([Figure 5.22](#)).
- Application – Used to specify and automatically go to the filename and working directory path whenever starting a session ([Figure 5.23](#)).

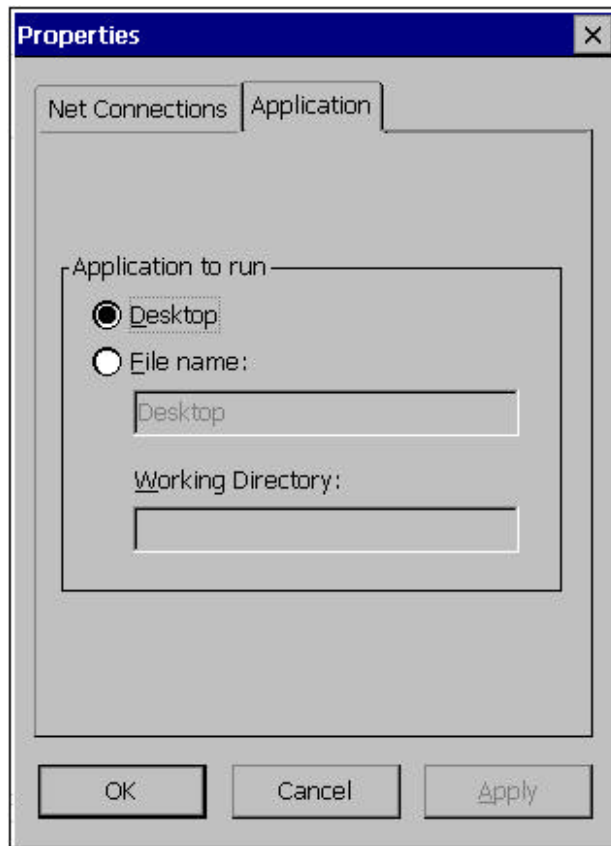


Figure 5.23 Properties Window - Application Tab

4. Make the necessary changes in the ' **Net Connections**' or ' **Application**' .
5. Click **Apply**.
6. When finished, click **OK**.

#### ◆ Editing a Terminal Emulation Connection

Please refer to **Adding a Terminal Emulation Client** section or the [Terminal Emulation User's Guide](#).

### 5.3.3. Deleting a Connection

1. Select the Configure tab in the TeleCLIENT Connection Manager window.
2. Select the connection to be deleted by clicking on connection name.

3. Click **Delete**.
4. Click **Yes** to confirm the deletion.

### 5.3.4. Setting Start-up Connections

The TeleCLIENT TC7530 can be set to automatically connect to a server whenever a session begins instead of using the default server.

To set automatic start-up connections, complete the following steps:

1. Select the **Configure** tab in the TeleCLIENT Connection Manager window.
2. Click **Startup**. The **Connection Startup** window appears ([Figure 5.24](#)).

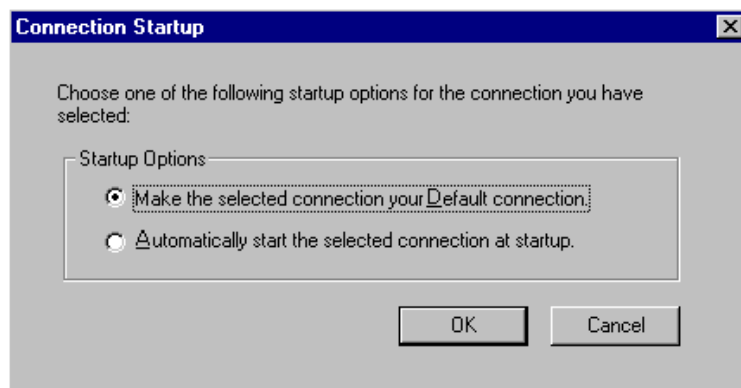


Figure 5.24 Connection Startup Window

3. Select one of the following Startup Options:
  - Make the selected connection the default connection – Enables the default connection selected in the **TeleCLIENT Connection Manager**. The default connection is the one highlighted when TeleCLIENT TC7530 powers on and TeleCLIENT Connection Manager window appears.
  - Automatically start the selected connection at startup – Enables the TeleCLIENT TC7530 to automatically connect to the selected in the **TeleCLIENT Connection Manager** each time a user starts up TeleCLIENT TC7530.
4. Click **OK** to save your changes.

### 5.4. Connecting to a Network Server

The **TeleCLIENT Connection Manager** lists all of your system's available network connections.

To connect to a server, complete the following steps:

Click the **Connections** tab in the **TeleCLIENT Connection Manager** window ([Figure 5.25](#)).

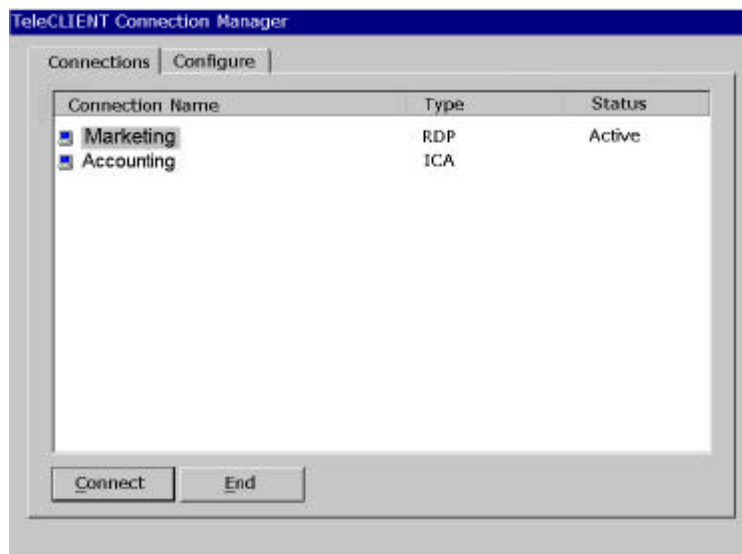


Figure 5.25 TeleCLIENT Connection Manager Window

1. Select a Connection Name in the connection list.
2. Click **Connect** (or double-click on the Connection Name). If the connection was defined for automatic logon and the server it connects to is enabled, the TeleCLIENT TC7530 makes the connection and the user is automatically logged on.
3. If the logon is not automatic, the **Windows Logon Information** window displays. Follow the Windows prompts to complete the logon.

### 5.5. Using the TeleCLIENT TC7530 Hot Keys

The TeleCLIENT TC7530 hot keys simplify the process of switching between active sessions. Instead of using the **TeleCLIENT Connection Manager**, users can use the hot keys on the TeleCLIENT TC7530 keyboard to automatically switch between sessions in a single step.



## Appendix F. User Manual

FCC ID : PFMTC7530  
Report No:E03.0820.FCC.444N  
Issue of Date: August 20, 2003

There are several available TeleCLIENT hot keys, described in Table 5-1.

Table 5-1 TeleCLIENT TC7530 Hot Keys

Hot Key	Function
CTRL+ALT+up arrow	Toggles up between active sessions.
CTRL+ALT+down arrow	Toggles down between active sessions.
CTRL+ALT+HOME	Automatically toggles to the default session.
CTRL+ALT+END	Toggles directly to the TeleCLIENT Connection Manager.
<F2>	When the TeleCLIENT Connection Manager is active, toggles directly to the TeleCLIENT Terminal Properties window.

If hot keys are not enabled, follow the instructions in Section 5.5.1, **Starting Multiple Connections** to switch between active connections.

### 5.5.1. Starting Multiple Connections

The TeleCLIENT TC7530 allows multiple simultaneous connections. The number of connections started is limited by the amount of RAM available in the TeleCLIENT TC7530.

◆ **To start a second connection, complete the following steps:**

1. Press CTRL+ALT+END on the keyboard to access the TeleCLIENT Connection Manager.
2. Select the Connection Name. Click **Connect**.

◆ **To switch between running connections, complete the following steps:**

1. Press CTRL+ALT+END on the keyboard to access the TeleCLIENT Connection Manager.



## Appendix F. User Manual

---

2. Select a Connection Name. Click **Connect**.
3. OR, on the keyboard, press **CTRL+ALT+UP** (with the up arrow) or **CTRL+ALT+DOWN** (with the down arrow) to cycle through the list of active connections. The Connection list reflects the order in which the connections were started, with the most recent at the top of the list.

### 5.6. Logging Off

To log off and end a session:

When connected to an application, close the application to terminate the connection.

When connected to a server's desktop, complete the following steps:

1. Close all applications.
2. Click Start on the taskbar at the bottom of the Windows Terminal Server (WTS) desktop.
3. Select **Logoff**.
4. Click **OK** in the panel that displays. WTS closes any programs that are still running.

A new session will now start, or the **TeleCLIENT Connection Manager** window will appear. The TeleCLIENT TC7530 may now be powered off.

#### 5.6.1. Ending Auto-Start Connections

To end an auto-start connection, complete the following steps:

1. Press CTRL+ALT+END on the keyboard to access the TeleCLIENT Connection Manager.
2. Select the **Configure** tab.
3. Select the auto-start Connection Name and click Startup. The **TeleCLIENT Connection Startup** window appears.
4. Click on the 'Make the selected' connection your Default connection. Click **OK**.
5. Select the connection and click **End**.

## 6. Appendix A

### 6.1. Specifications

This chapter contains the following TeleCLIENT TC7530 specifications:

- Hardware Specifications
- Networking and Communications
- Software Specifications
- Environmental
- Regulatory Compliance
- Physical Characteristics
- Warranty Information

#### 6.1.1. TeleCLIENT TC7530 Hardware Specifications

Hardware	Description
CPU	<ul style="list-style-type: none"><li>▪ National Semiconductor Geode GX1™ 300MHz processor</li></ul>
RAM Memory	<ul style="list-style-type: none"><li>▪ 64MB RAM standard</li><li>▪ Expandable to 128MB</li></ul>
Flash Memory	<ul style="list-style-type: none"><li>▪ 8MB DOC or 32MB CompactFlash</li><li>▪ Flash upgrade utility via Ethernet</li></ul>
Graphics Subsystem	<ul style="list-style-type: none"><li>▪ National Semiconductor XpressGRAPHICS™ Cx5530A</li></ul>
Audio Support	<ul style="list-style-type: none"><li>▪ National Semiconductor XpressAUDIO™</li><li>▪ Full 16-bit stereo FM synthesis</li><li>▪ Built-in speaker system</li><li>▪ Audio Out–Microphone in</li></ul>
Resolution	<ul style="list-style-type: none"><li>▪ Resolution of 1024x768</li><li>▪ 16 to 65K colors</li><li>▪ Supports all VESA monitors</li></ul>

**TeleCLIENT TC7530 Hardware Specifications**



## Appendix F. User Manual

### 6.1.2. Networking, Communications And Input/Output Specifications

Item	Description
Networking Protocols	<ul style="list-style-type: none"> <li>▪ 10/100BaseT Ethernet, RJ45, IEEE 802.11B Wireless LAN</li> <li>▪ TCP/IP with DNS, DHCP and PPP</li> <li>▪ Load balancing supported by Citrix ICA</li> <li>▪ Remote modem dial up with Citrix ICA</li> </ul>
Communication Protocols	<ul style="list-style-type: none"> <li>▪ Microsoft RDP</li> <li>▪ Citrix ICA</li> </ul>
Parallel Port	<ul style="list-style-type: none"> <li>▪ One parallel port</li> </ul>
Serial Port	<ul style="list-style-type: none"> <li>▪ One serial port</li> </ul>
USB Ports	<ul style="list-style-type: none"> <li>▪ Two USB ports</li> </ul>
Audio Ports	<ul style="list-style-type: none"> <li>▪ Audio out</li> <li>▪ Microphone in</li> </ul>
Keyboard and Mouse Ports	<ul style="list-style-type: none"> <li>▪ Keyboard and mouse ports (PS/2 keyboard and mouse included)</li> </ul>

**Networking, Communications and Input/Output Specifications**

### 6.1.3. TeleCLIENT TC7530 Software Specifications

Feature	Description
Operating System	<ul style="list-style-type: none"> <li>▪ Microsoft Windows CE</li> <li>▪ TeleManager Remote Management Software compatible</li> </ul>
Set-up and Configuration	<ul style="list-style-type: none"> <li>▪ TeleCLIENT Setup Wizard for fast, simple connection to the network</li> <li>▪ Login configured for server access</li> </ul>





## Appendix F. User Manual

FCC ID : PFMTC7530  
 Report No:E03.0820.FCC.444N  
 Issue of Date: August 20, 2003

	<ul style="list-style-type: none"> <li>▪ Familiar Windows graphical user interface</li> <li>▪ Local power-on</li> </ul>
Remote Management Software	<ul style="list-style-type: none"> <li>▪ TeleManager Management Software</li> </ul>
Server Operating System Support*	<ul style="list-style-type: none"> <li>▪ Microsoft Windows NT Server 4.0, Terminal Server Edition</li> <li>▪ Microsoft Windows 2000 Terminal Services</li> <li>▪ Windows XP</li> <li>▪ Windows Server 2003</li> <li>▪ Citrix WinFrame</li> <li>▪ Citrix MetaFrame</li> </ul>
Terminal Emulation Support*	<ul style="list-style-type: none"> <li>▪ TVI 925, 950, 955</li> <li>▪ VT100..VT520. Ansi BBS. SCO Console. AixTerm,</li> <li>▪ Wyse 50, 50+, 60,</li> <li>▪ Hazeltine 1500, ADDS A2</li> <li>▪ IBM 3270: TN3270E, TN3287 Printing</li> <li>▪ IBM5250: TN5250, TN3812 Printing</li> <li>▪ IBM 3151</li> <li>▪ HP Suite: HP 2392A, 2622A, 700/92</li> </ul>

### Software Specifications

\* Terminal emulation support optional. Additional emulations available by request only. Please contact TeleVideo directly for further information.

### 6.1.4. Environmental Specifications

Feature	Description
Environmental Specifications	<ul style="list-style-type: none"> <li>▪ Operating temperature 30° to 104° F (0° to 35° C)</li> <li>▪ Storage temperature -4° to 140° F (-20° to 60° C)</li> <li>▪ State-of-the art, fanless convection cooling design</li> <li>▪ Humidity 20% to 85%, non-condensing</li> <li>▪ Operating altitude of 0 to 10,000 feet (3050 meters)</li> </ul>



## Appendix F. User Manual

FCC ID : PFMTC7530  
Report No:E03.0820.FCC.444N  
Issue of Date: August 20, 2003

Power Specifications	<ul style="list-style-type: none"><li>External power supply</li><li>100-240 VAC at 50-60Hz</li><li>4.58A</li><li>55W nominal</li></ul>
----------------------	--

### Environmental Specifications

#### 6.1.5. Regulatory Compliance Specifications

Feature	Description
Regulations	<ul style="list-style-type: none"><li>EPA ENERGY STAR®</li><li>FCC Class B</li><li>CE Mark</li></ul>

### Regulatory Compliance Specifications

#### 6.1.6. Physical Specifications

Feature	Description
Weight	<ul style="list-style-type: none"><li>18.0 lbs</li></ul>
Height	<ul style="list-style-type: none"><li>15.7 inches</li></ul>
Depth	<ul style="list-style-type: none"><li>7.2 inches</li></ul>
Width	<ul style="list-style-type: none"><li>15.1 inches</li></ul>

### Physical Specifications

#### 6.1.7. Warranty Information

The TeleCLIENT TC7530 is supported by a one-year warranty service. Please contact your TeleVideo, Inc. representative for more information.



## Appendix F. User Manual

FCC ID : PFMTC7530  
Report No: E03.0820.FCC.444N  
Issue of Date: August 20, 2003

---

## FCC Information

### FCC Part 15.105

Note: This equipment has been tested and found to comply with the limits for a Class B digital device, pursuant to part 15 of the FCC Rules.

These limits are designed to provide reasonable protection against harmful interference in a residential installation. This equipment generates, uses, and can radiate radio frequency energy and, if not installed and used in accordance with the instructions. May cause harmful interference to radio communications. However, there is no guarantee that interference will not occur in a particular installation. If this equipment does cause harmful interference to radio or television reception, which can be determined by turning the equipment off and on, the user is encouraged to try to correct the interference by one or more of the following measures:

- Reorient or relocate the receiving antenna.
- Increase the separation between the equipment and receiver.
- Connect the equipment into an outlet on a circuit different from that to which the receiver is connected
- Consult the dealer or an experience radio / TV technician for help

### FCC Part 15.21

Changes or modifications not expressly approved by the party responsible for compliance Could void the user's authority to operate the equipment