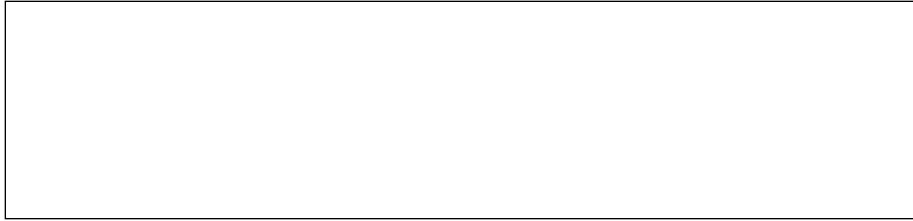


## **FCC NOTICE**



This equipment has been tested and found to comply with the limits for a Class B digital device, pursuant to part 15 of the FCC Rules. These limits are designed to provide reasonable protection against harmful interference in a residential installation. This equipment generates, uses and can radiate radio frequency energy and, if not installed and used in accordance with the instructions, may cause harmful interference to radio communication. However, there is no guarantee that interference will not occur in a particular installation. If this equipment does cause harmful interference to radio or television reception, which can be determined by turning the equipment off and on, the user is encouraged to try to correct the interference by one or more of the following measures :

- Reorient or relocate the receiving antenna.
- Increase the separation between the equipment and receiver.
- Connect the equipment into an outlet on a circuit different from that to which the receiver is connected.
- Consult the dealer or an experienced radio/TV technician for help.

NOTE : The manufacturer is not responsible for any radio or TV interference caused by unauthorized modifications to this equipment. Such modifications could void the user's authority to operate the equipment.

# CONTENTS

Chapter 1. Installation

Chapter 2. SRE06003 Manual

Chapter 3. Q&A

## 1. Specifications

- 1/4" color CIF CMOS Image sensor
- 320k Pixels
- Lens F2.0, f=5
- Top-mounted Snap Shot
- CIF 30Fps
- QCIF 30Fps

## 2. System Requirements

- Microsoft Windows 98, Windows ME, Windows 2000, XP
- Pentium MMX 200MHz or higher
- 32MB RAM or higher (64MB recommended)
- 16bit colour display or higher
- Connects to USB Port

## Chapter 1. Installation

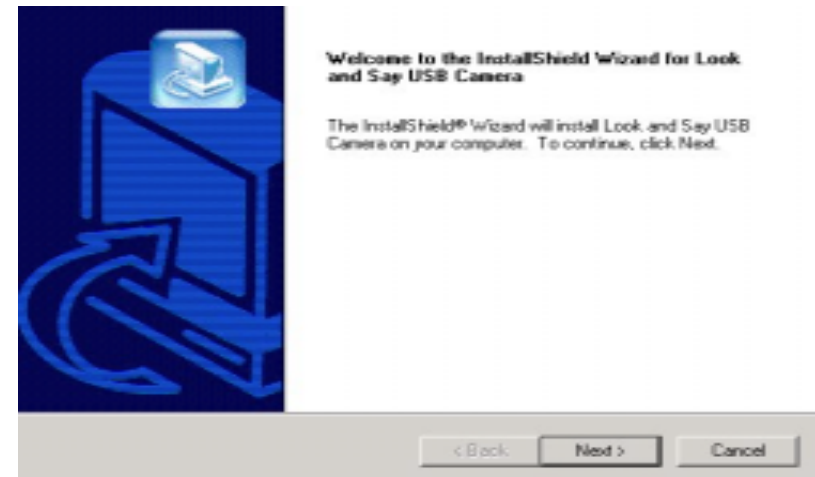
### Install LnSCam

1. Close all programs currently running, including any virus protection programs (some virus protection programs may interfere with installation). Insert the L&S CD-ROM into your computer's CD-ROM drive.

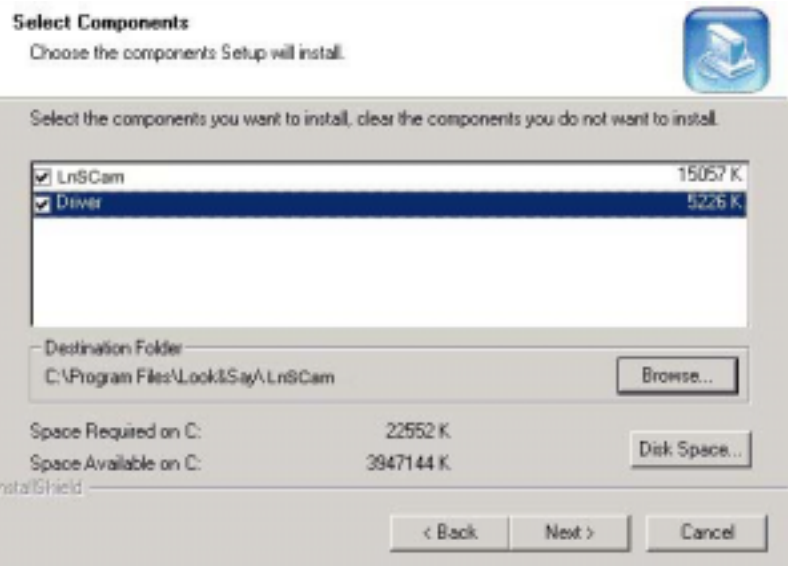
Open the 'My Computer' folder. Then click Zstar.exe in the CD-ROM drive.

Click USB PC Camera Setup.

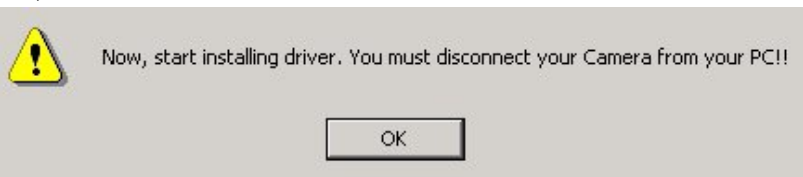
2. Click 'Next'..



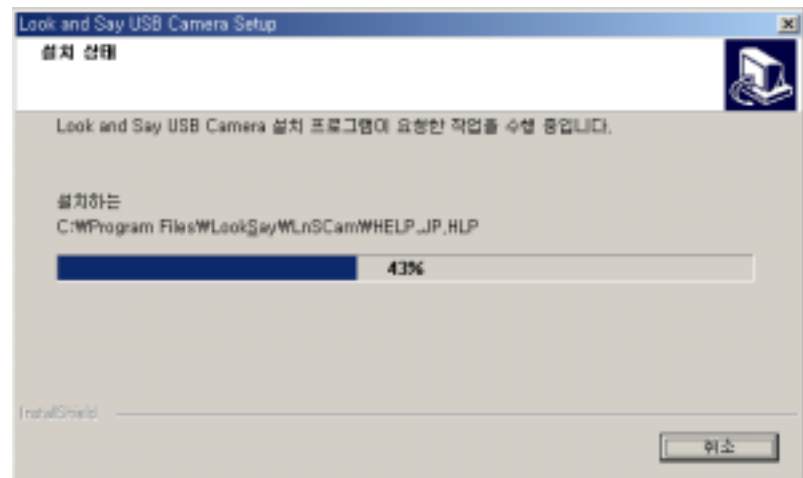
3. The dialogue box for selecting which options you wish to install appears. Select 'LnSCam' and 'Driver', and then click 'Next'.



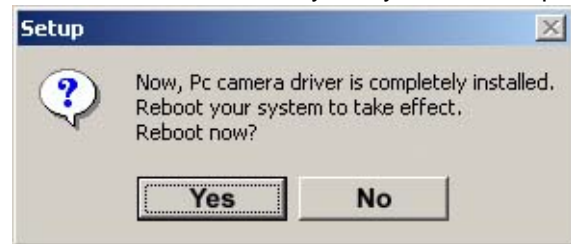
4. A dialog box warning you to remove any PC Camera from the USB Port before starting to install the driver will appear. If PC Camera is not connected to the USB port, click 'OK'.



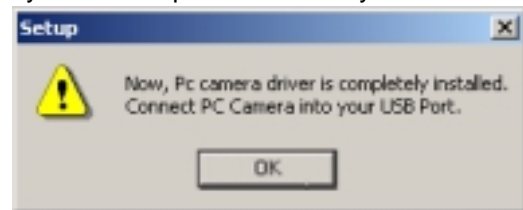
5. Setup starts automatically.



6. A dialogue box informing you that installation of the driver is complete will appear as below. Please restart your system to complete installation (recommended).



If you are using the Windows 2000 Operating system, there is no need to restart your system. Now please connect your PC Camera to the USB Port.



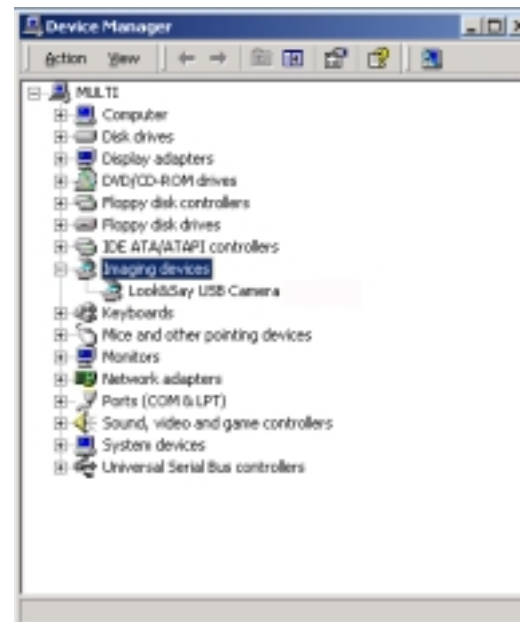
7. The [Setup has finished installing Look and Say USB Camera on your computer] window appears. Click 'Finish'.



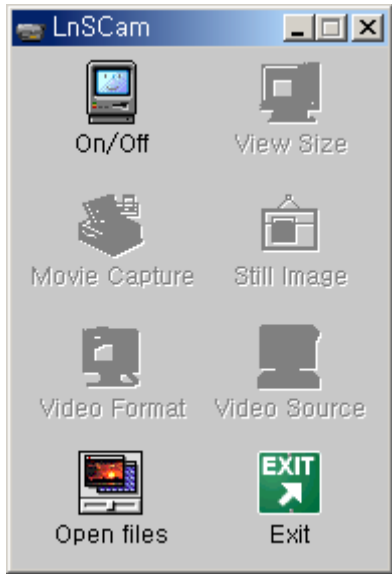
If you are using the Windows 98 / ME Operating system, restart your computer and connect your PC Camera to the USB Port. If you are using the Windows 2000 operating system, connect your PC Camera to the USB port. Then the 'New Hardware' will be found and your USB PC Camera will be installed automatically.

8. Connect your PC Camera to USB Port.  
Then the 'New Hardware' will be found and your USB PC Camera will be installed automatically.

- (1) To check that your PC camera has been installed properly, go to the [Start] menu.
- (2) Point to [Settings] and click on [Control Panel].
- (3) Double click on [System].
- (4) Click the [System Properties] tab, then click the [Device Manager] tab.  
A window containing a list of devices appears.
- (5) Make sure that 'Samsung USB PC Camera (ZSMC)' is now listed as an [Imaging Device] in the [Device Manager].



## Chapter 2 SRE06003 Manual



ΛνΣΧαμ ηας της θαλιτης φυνχτιονς το ηελπψου χρεατε φυστ αβουτ παριους σιζεσ οφ δισπλαιν ωινδωσ ανδ ανψ ημπε οφ πιδεδ ωιτη ΑςΙ, ΑΣΦ φιλε φορματ ανδ πιχτυρεσ στιλλ ιμαγε ωιτη ΒΜΠ.

Ιφ ψου ηαπε α θυεστιον ορ χομμεντ αβουτ ΛνΣΧαμ 1.0, πλεασε εμειλ ψουρ μεσσαγε το ;μοονεσερομε.χο.κρ

Ωε ωιλλ κρεπ φινδινγ α ωαψ το χοννεχτ ωιτη οτηερ υσερς το εξχηανγε ιδεασ, τιπς, θυεστιονς, ανδ τεχηνιθυεσ φορ δεπελοπινη τη υπγραδεδ προγραμ..

Ιν τη δισπλαιν στοππεδ, χλιχκ τη ΟΝ/ΟΦΦ βυττον ονχε μορε το τυρν τη δισπλαιν ωινδω ανδ τη φυνχτιονς ον.



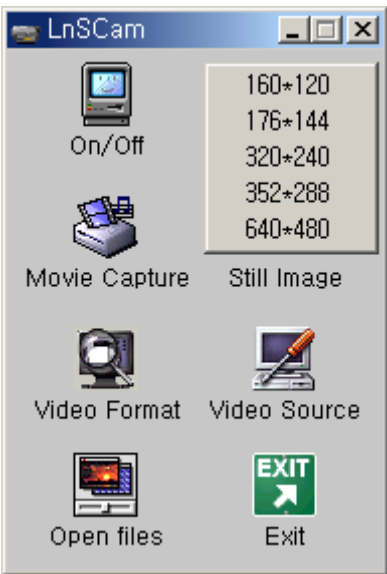
### On/Off

Χλιχκ τη ΟΝ/ΟΦΦ βυττον το τυρν τη δισπλαιν ωινδω ον ορ οφφ. Ωην χλιχκ τη ΟΝ/ΟΦΦ βυττον ονχε, αλλ οφ φυνχτιονς αρε στοππεδ ασ βελω.



### View Size Control

Χλιχκ το χηανγε ωινδω σιζε 160 Ξ 120, 176 Ξ 144, 320 Ξ 240, 352Ξ288 ανδ 640 Ξ 480 πιξελ



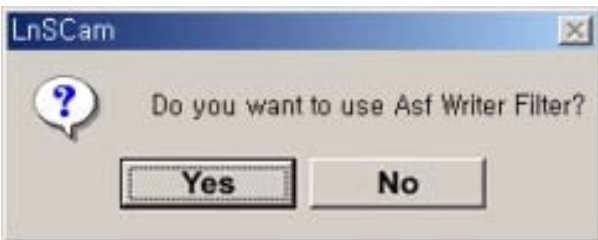
Χλινκ Στιλλ Ιμαγε Χαπτυρε βυττον το χαπτυρε τη στιλλ ιμαγε ωιτη ΒΜΠ φιλε.  
 Χλινκ Οπεν φιλες το σεε τη στιλλ ιμαγεσ ωηατ ψου χαπτυρεδ ανδ οπεν  
 Πιχτυρε φολδερ το σελεχτ στιλλ ιμαγε φιλε ωηατ ναμεδ ασ βελωω.  
 εξ)2001-06-15\_20306356.βμπ (ψεαρ-μοντη-δαψ\_χλοχκ μινυτε σεχονδ.βμπ)



## Movie Capture

Χλινκ τη Μοωιε Χαπτυρε βυττον το χαπτυρε ωιδεο ωιτη [ΑςΙ φιλε](#) ορ [ΑΣΦ φιλε](#).

Το χαπτυρε τη ωιδεο ωιτη ΑςΙ φιλε, χλινκ No .  
 Το χαπτυρε τη ωιδεο ωιτη ΑΣΦ φιλε το ρεδυχε δατα ωολυμε, χλινκ Ψεσ .  
 Ωηεν χαπτυρινγ ωιδεο ωιτη ΑΣΦ φιλε, τη θυαλιτψ οφ ωιδεο χουλδ βε ινφεριορ.



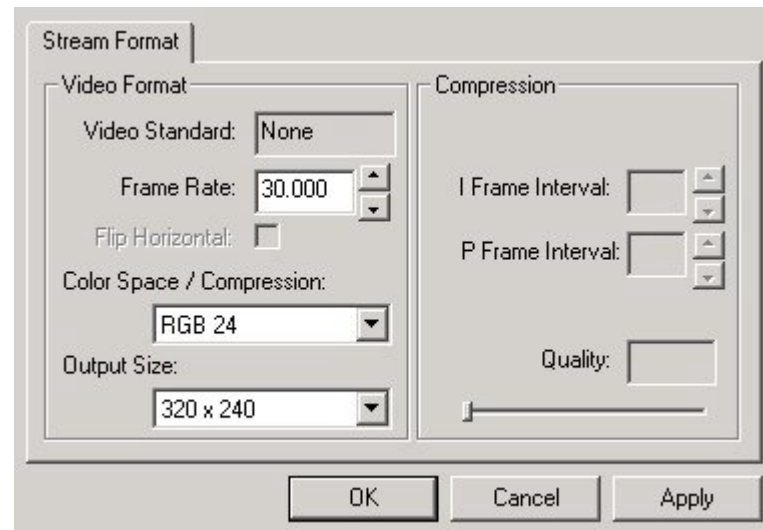
Το σπνχηρονιζε ψουρ ωοιχε ωιτη τη ωιδεο, υσε τη μιχροπηνε.  
 Χλινκ Οπεν φιλες το πλαψ τη ωιδεο ωηατ ψου χαπτυρεδ ανδ οπεν Μοωιε  
 φολδερ το σελεχτ ωιδεο φιλε ωηατ ναμεδ ασ βελωω.  
 εξ)2001-06-15\_17349313.αωι (ψεαρ-μοντη-δαψ\_ηουρ μινυτε σεχονδ.αωι)

## Still Image Capture



## Video Format

Χλινκ ζιδεο Φορματ το χοντρολ τη ωιδεο φορματ.  
 Σελεχτ Φραμε Ρατε, Χολορ σπαχε/Χομπρεσσιον ανδ Δισπλαιν Σιζε ψου δεσιρεδ.  
 Τηεν χλινκ Αππλψ .

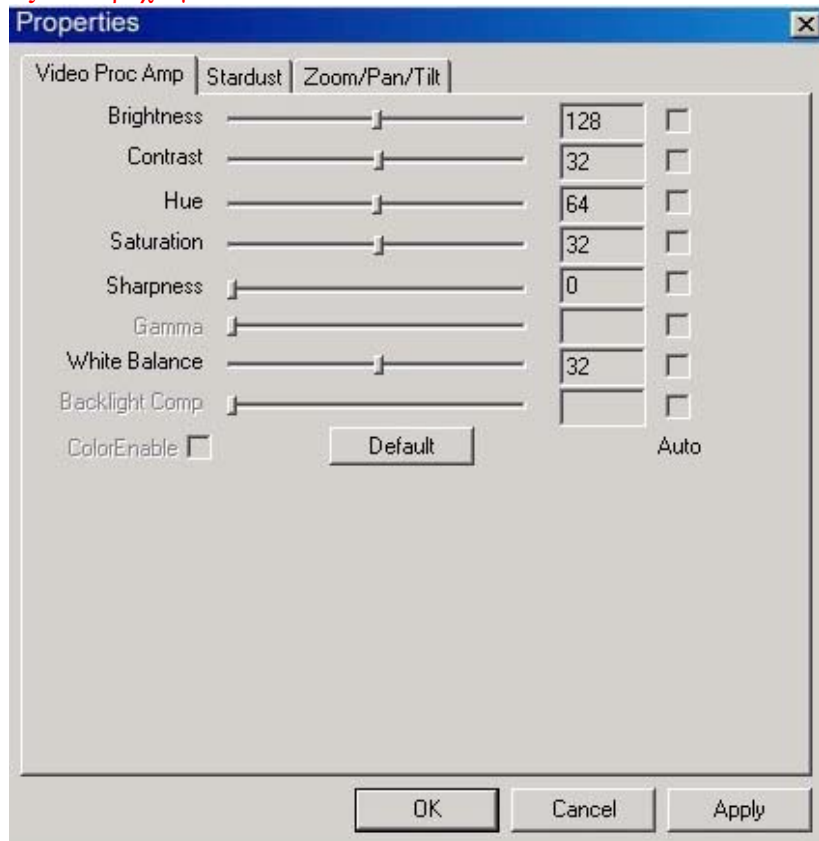


## Video Source

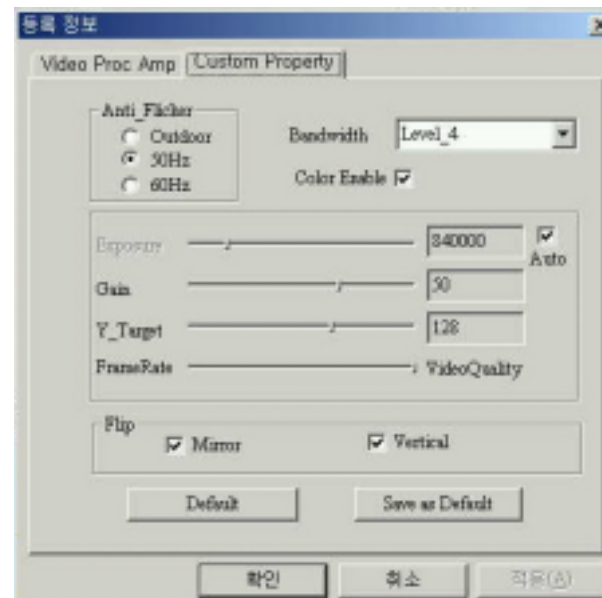
Χλινκ ζιδεο Σουρχε το χοντρολ τη ωιδεο σουρχε.  
 Τηισ οπτιον ις αππλιεδ το τηεσε μονελς ; ΑΣ-Π32ΝΑ, ΑΣ-Π32ΝΒ

Ωιτη τη ςιδεο Προχ Αμπ , σετ υπ τη συιταβλε χονφιγυρατιον ωιτη τη πλαχε υσινγ τη PIX χαμερα. Ονχε ψου ηαπε φινισηεδ σελεχτινγ ψουρ σεττινγς, χλιχκ Αππλγ .

<ςιδεο Προχ Αμπ>



<Custom Property>



**Anti\_Flicker** - Φορ υσε ιν Κορεα, σελεχτ 60Ηζ φορ υσε ιν στηερ χουντριεσ, σελεχτ

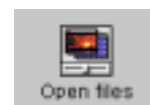
τηε αππροπριατε φλνορεσχεντ λαμπ φρεθυενχψ φορ υσε ιν τηατ χουντρν. Το υσε τηε PIX Χαμερα ουτσιδε, χλιχκ Ουτδοορ

**Color Enable** - Select the color screen or mono color screen.

**Auto Exposure** - Σελεχτ Αυτο Εξποσυρε το χοντρολ τηε εξποσυρε αυτοματιχαλλψ. Ψου χαν χοντρολ τηε μινυτε εξποσυρε ρατε ωιτη λεπελ χοντρολ βαρ.

**FrameRate** - Χοντρολ τηε ωιδεο θυαλιτην ανδ σπεεδ λεπελ ωηατ ψουρ δεσιρεδ.

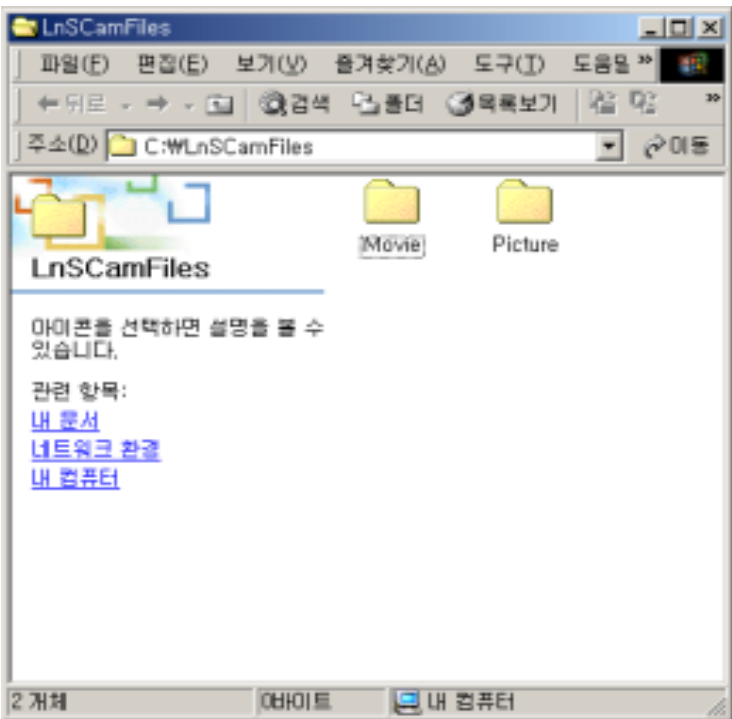
**Flip** - Μοπε τηε σχρεεν υπ ορ δοων



## Open Files

Χλιχκ τηε Οπεν Φιλεσ βυττον το σεε τηε πιχτυρεσ ανδ πλαψ τηε ωιδεο.

Τηε ωιδεο φιλεσ αρε στορεδ ιν Μοωιε φολδερ ανδ τηε σπιλλ ιμαγε φιλεσ αρε στορεδ ιν Πιχτυρε φολδερ.



## Exit

Χλίκη της Εξίτ βυττον το χλοσε ΛνΣΧαμ .

## Chapter 3 Q&A

### Q. Why is the video playing at slower than real-time speed?

A. Even though the camera continues to transmit image signals, the PC cannot handle lots of data continuously. Large amounts of data may temporarily interrupt or stop display of video data.

### Q. The screen is too unclear and foggy for viewing. What should I do?

A. This is because your camcorder is out of focus, or there may be a foreign substance on the lens surface. Correct the focus with the focus dial or remove the foreign substance with a soft cloth.

### Q. When I run LnSCam for the first time, the colours on the screen change.

A. When you run LnSCam for the first time, there may be some screen tremble because the camera makes automatic environmental settings. This does not affect the capture function.

### Q. No video is displayed by the imaging devices

A. The camera drivers are not correctly installed.

To install the correct camera drivers:

1. Right-click on My Computer and go to the Device Manager tab.
  2. Click on the Imaging Device.
  3. Select and Remove "Look&Say USB Camera Ver-1.xx".
  4. Close the Device Manager.
  5. Unplug your USB camera.
  6. Install the Driver again.
  7. Restart your computer.
  8. Once the system is powered back up, plug the camera back in.
- \* Notice ; For Pentium II Processor Users, please set up the USB device to be available.
1. Restart your computer.
  2. Before start Windows, press 'Del' key to open CMOS SETUP UTILITY.
  3. Go to 'Integrated Peripherals' and find 'On chip USB'.
  4. If 'On chip USB' is disabled, move the curser on 'Disabled'.
  5. Press '+' key to change 'On chip USB' Enabled.
  6. Press 'Esc' key to quit.
  7. To save it, press 'Y' key. Press 'Esc' again.

### Q. When the PC shuts down unexpectedly

A. First, check that your PC camera is correctly connected to the USB port. If you unplug your PC camera and try to playback data with LnSCam, your computer may shut down. Don't disconnect the PC camera from the USB Port when you are using LnSCam or the Internet Video chatting program.

Large qualities of data may cause your PC to shut down. In this case please restart your computer.