

CONTENTS

Chapter 1. Installation

Chapter 2. SRE06002 Manual

Chapter 3. Q&A

1. Specifications

- 1/4" color CIF CMOS Image sensor
- 320k Pixels
- Lens F2.0, f=5
- Top-mounted Snap Shot
- CIF 30Fps
- QCIF 30Fps

2. System Requirements

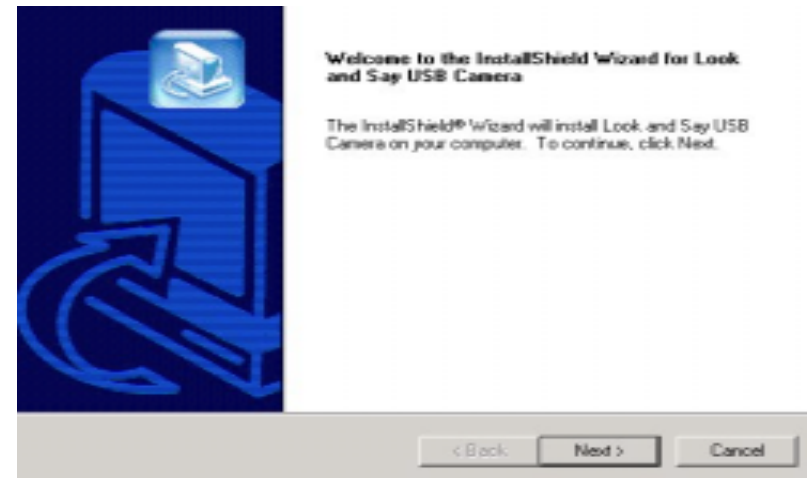
- Microsoft Windows 98, Windows ME, Windows 2000, XP
- Pentium MMX 200MHz or higher
- 32MB RAM or higher (64MB recommended)
- 16bit colour display or higher
- Connects to USB Port

Chapter 1. Installation

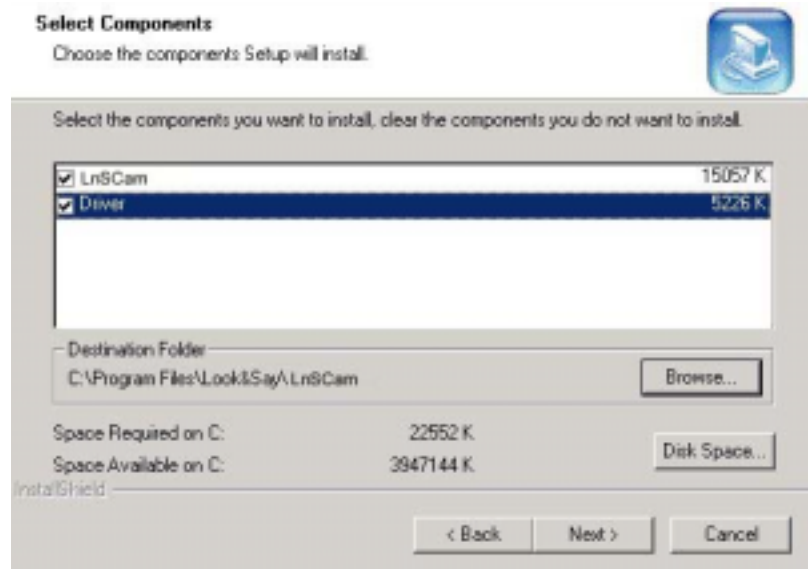
Install LnSCam

1. Close all programs currently running, including any virus protection programs (some virus protection programs may interfere with installation). Insert the L&S CD-ROM into your computer's CD-ROM drive.
Open the 'My Computer' folder. Then click Zstar.exe in the CD-ROM drive.
Click USB PC Camera Setup.

2. Click 'Next'..



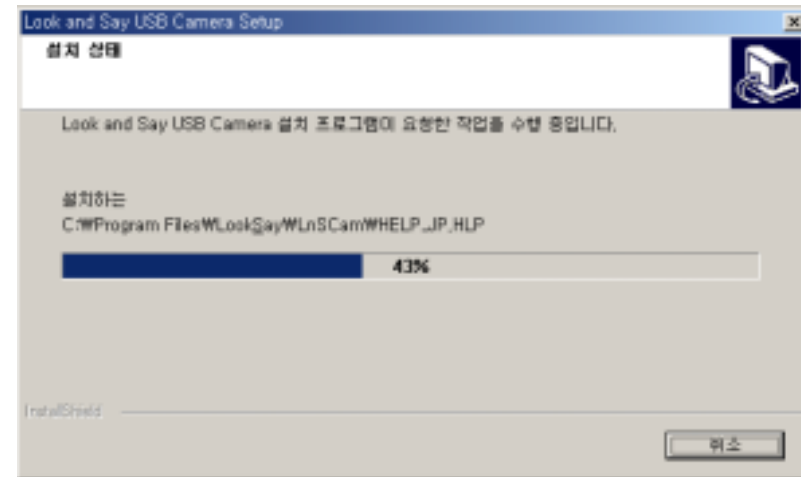
3. The dialogue box for selecting which options you wish to install appears. Select 'LnSCam' and 'Driver', and then click 'Next'.



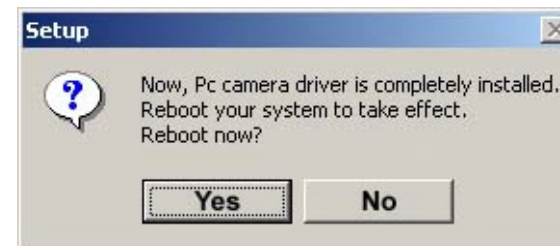
4. A dialog box warning you to remove any PC Camera from the USB Port before starting to install the driver will appear. If PC Camera is not connected to the USB port, click 'OK'.



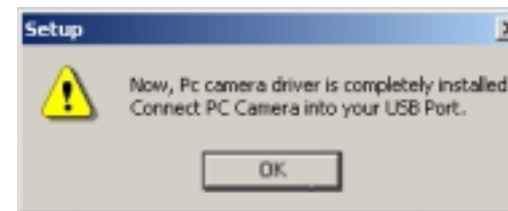
5. Setup starts automatically.



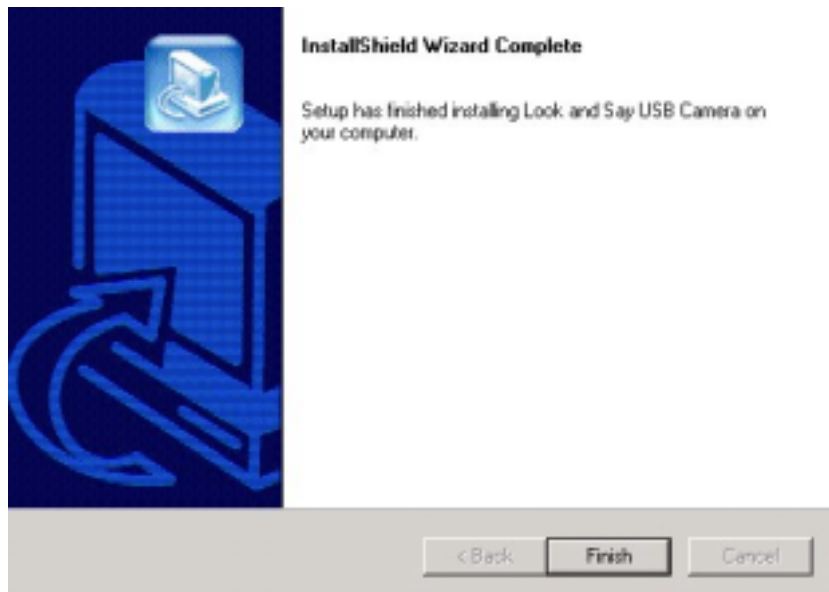
6. A dialogue box informing you that installation of the driver is complete will appear as below. Please restart your system to complete installation (recommended).



If you are using the Windows 2000 Operating system, there is no need to restart your system. Now please connect your PC Camera to the USB Port.



7. The [Setup has finished installing Look and Say USB Camera on your computer] window appears. Click 'Finish'.



If you are using the Windows 98 / ME Operating system, restart your computer and connect your PC Camera to the USB Port. If you are using the Windows 2000 operating system, connect your PC Camera to the USB port. Then the 'New Hardware' will be found and your USB PC Camera will be installed automatically.

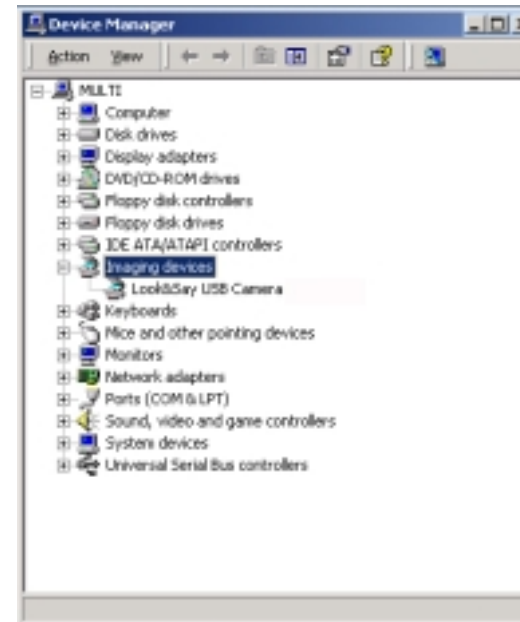
8. Connect your PC Camera to USB Port.

Then the 'New Hardware' will be found and your USB PC Camera will be installed automatically.

- (1) To check that your PC camera has been installed properly, go to the [Start] menu.
- (2) Point to [Settings] and click on [Control Panel].
- (3) Double click on [System].
- (4) Click the [System Properties] tab, then click the [Device Manager] tab.

A window containing a list of devices appears.

- (5) Make sure that 'Samsung USB PC Camera(ZSMC)' is now listed as an [Imaging Device] in the [Device Manager].





LnSCam has the quality functions to help you create just about various sizes of display windows and any type of video with AVI, ASF file format and pictures still image with BMP.

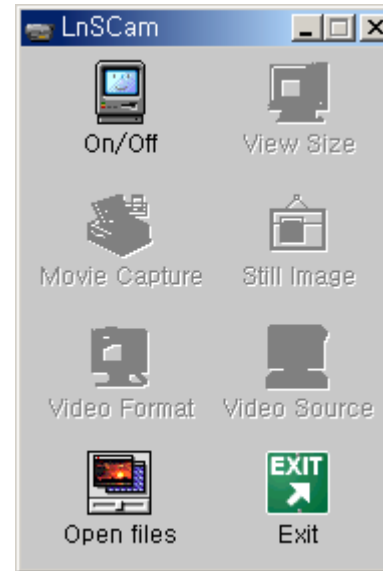
If you have a question or comment about LnSCam 1.0, please email your message to ;moon@serome.co.kr

We will keep finding a way to connect with other users to exchange ideas, tips, questions, and techniques for developing the upgraded program..

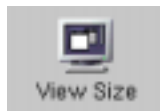


On/Off

Click the 'ON/OFF' button to turn the display window on or off. When click the 'ON/OFF' button once, all of functions are stopped as below.

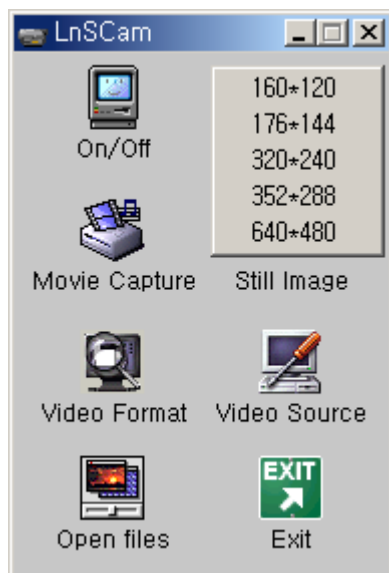


In the display stopped, click the 'ON/OFF' button once more to turn the display window and the functions on.



View Size Control

Click to change window size 160 X 120, 176 X 144, 320 X 240, 352X288 and 640 x 480 pixel



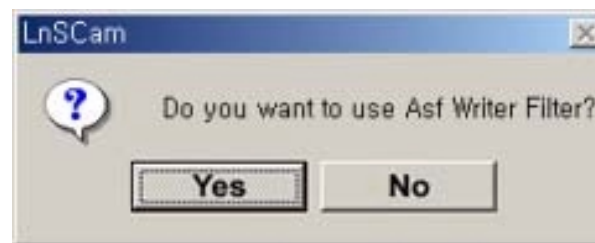
Movie Capture

Click the 'Movie Capture' button to capture video with [AVI file](#) or [ASF file](#).

To capture the video with AVI file, click 'No'.

To capture the video with ASF file to reduce data volume, click 'Yes'.

When capturing video with ASF file, the quality of video could be inferior.



To synchronize your voice with the video, use the microphone.

Click 'Open files' to play the video what you captured and open 'Movie' folder to select video file what named as below.

ex)2001-06-15_17'49'13.avi (year-month-day_ hour' minute' second.avi)



Still Image Capture

Click 'Still Image Capture' button to capture the still image with BMP file.

Click 'Open files' to see the still images what you captured and open 'Picture' folder to select still image file what named as below.

ex)2001-06-15_20'06'56.bmp (year-month-day_ clock' minute' second.bmp)

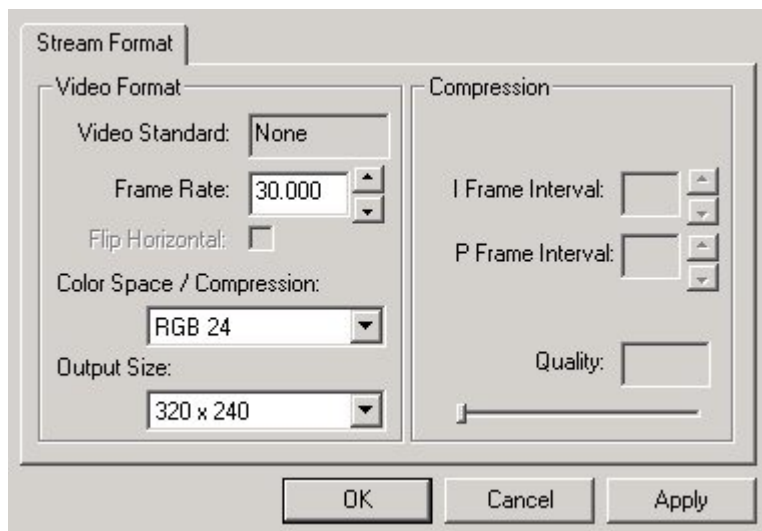


Video Format

Click 'Video Format' to control the video format.

Select Frame Rate, Color space/Compression and Display Size you desired.

Then click 'Apply'.



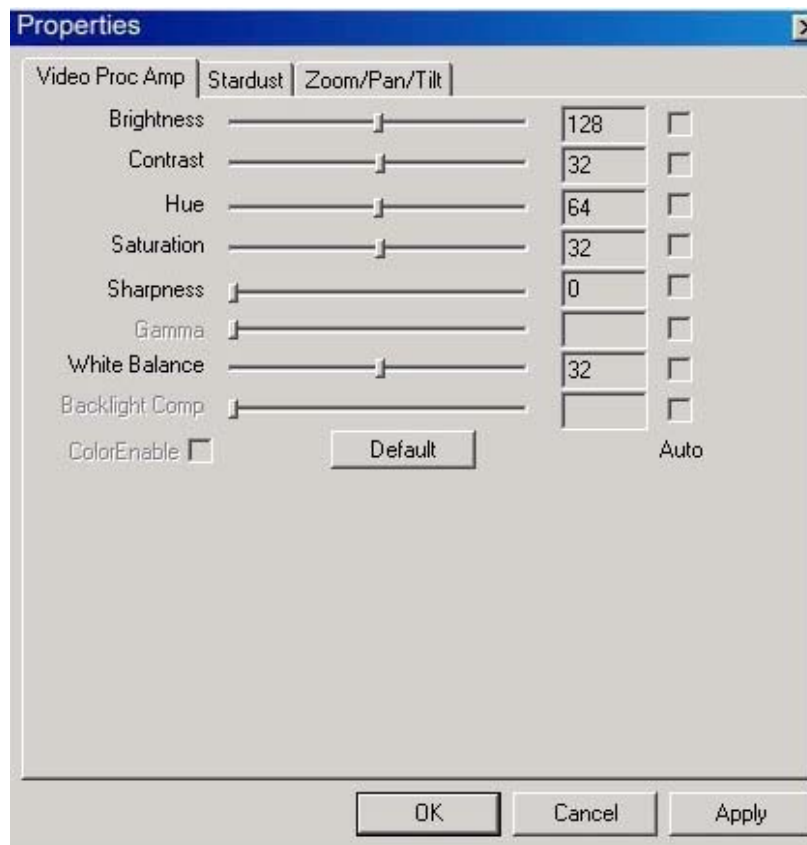
Video Source

Click 'Video Source' to control the video source.

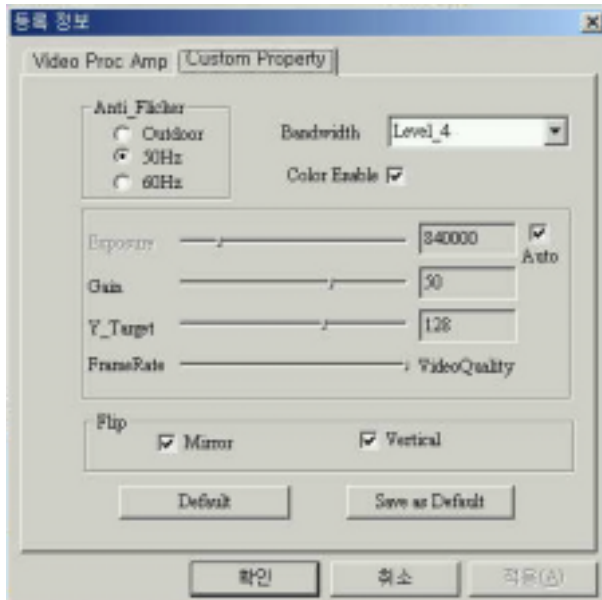
This option is applied to these models ; LS-P32NA, LS-P32NB

With the 'Video Proc Amp', set up the suitable configuration with the place using the PC camera. Once you have finished selecting your settings, click 'Apply'.

<Video Proc Amp>



<Custom Property>



Anti_Flicker - For use in Korea, select 60Hz for use in other countries, select the appropriate fluorescent lamp frequency for use in that country. To use the PC Camera outside, click Outdoor

Color Enable – Select the color screen or mono color screen.

Auto Exposure - Select 'Auto Exposure' to control the exposure automatically. You can control the minute exposure rate with Level control bar.

FrameRate – Control the video quality and speed level what your desired.

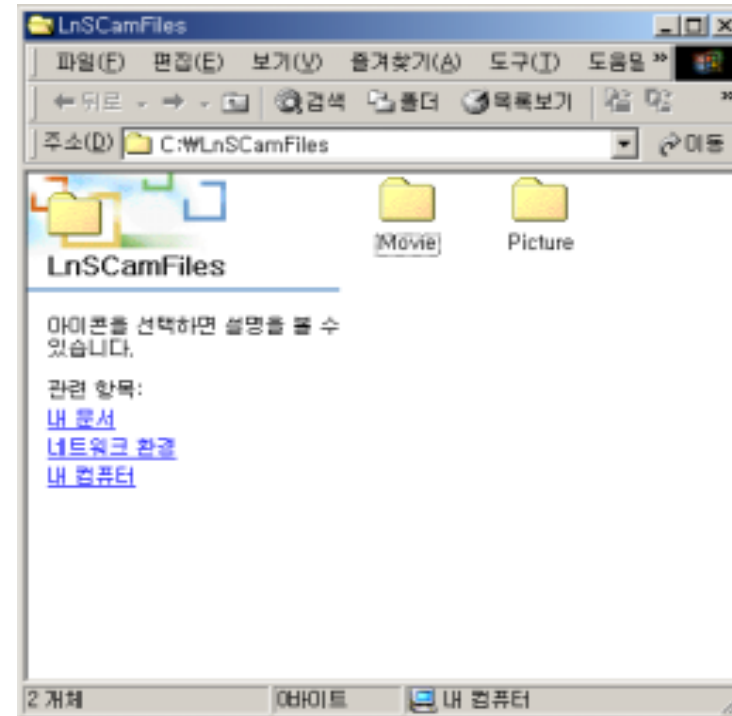
Flip – Move the screen up or down



Open Files

Click the 'Open Files' button to see the pictures and play the video.

The video files are stored in 'Movie' folder and the still image files are stored in 'Picture' folder.



Exit

Click the 'Exit' button to close 'LnSCam'.

Chapter 3 Q&A

Q. Why is the video playing at slower than real-time speed?

- A. Even though the camera continues to transmit image signals, the PC cannot handle lots of data continuously. Large amounts of data may temporarily interrupt or stop display of video data.

Q. The screen is too unclear and foggy for viewing. What should I do?

- A. This is because your camcorder is out of focus, or there may be a foreign substance on the lens surface. Correct the focus with the focus dial or remove the foreign substance with a soft cloth.

Q. When I run LnSCam for the first time, the colours on the screen change.

- A. When you run LnSCam for the first time, there may be some screen tremble because the camera makes automatic environmental settings. This does not affect the capture function.

Q. No video is displayed by the imaging devices

- A. The camera drivers are not correctly installed.

To install the correct camera drivers:

1. Right-click on My Computer and go to the Device Manager tab.
2. Click on the Imaging Device.
3. Select and Remove "Look&Say USB Camera Ver-1.xx".
4. Close the Device Manager.
5. Unplug your USB camera.
6. Install the Driver again.

7. Restart your computer.

8. Once the system is powered back up, plug the camera back in.

* Notice ; For Pentium II Processor Users, please set up the USB device to be available.

1. Restart your computer.
2. Before start Windows, press 'Del' key to open CMOS SETUP UTILITY.
3. Go to 'Integrated Peripherals' and find 'On chip USB'.
4. If 'On chip USB' is disabled, move the cursor on 'Disabled'.
5. Press '+' key to change 'On chip USB' Enabled.
6. Press 'Esc' key to quit.
7. To save it, press 'Y' key. Press 'Esc' again.

Q. When the PC shuts down unexpectedly

- A. First, check that your PC camera is correctly connected to the USB port. If you unplug your PC camera and try to playback data with LnSCam, your computer may shut down. Don't disconnect the PC camera from the USB Port when you are using LnSCam or the Internet Video chatting program.

Large quantities of data may cause your PC to shut down. In this case please restart your computer.

INFORMATION TO THE USER

This equipment has been tested and found to comply with the limits for a Class B digital device, pursuant to part 15 of the FCC Rules. These limits are designed to provide reasonable protection against harmful interference in a residential installation.

This equipment generates, uses and can radiate radio frequency energy and, if not installed and used in accordance with the instructions, may cause harmful interference to radio communications. However, there is no guarantee that interference will not occur in a particular installation. If this equipment does cause harmful interference to radio or television reception, which can be determined by turning the equipment off and on, the user is encouraged to try to correct the interference by one more of the following measures:

- Reorient or relocate the receiving antenna.
- Increase the separation between the equipment and receiver.
- Connect the equipment into an outlet on a circuit different from that to which the receiver is connected.
- Consult the dealer or an experienced radio/TV technician for help.

WARNING

Changes or modifications not expressly approved by the manufacturer could void the user's authority to operate the equipment.

This device complies with Part 15 of the FCC Rules. Operation is subject to the following two conditions: (1) this device may not cause harmful interference, and (2) this device must accept any interference received, including interference that may cause undesired operations.