
VisionNet 708

User' s Manual

VisionNet 708 ADSL Ethernet Modem





Copyright 2002 DQ Technology Inc.

All Rights Reserved.

No part of this publication may be reproduced or distributed in any form or by any means, or stored in a database or retrieval system, without the prior written permission of DQ Technology, Inc.





Contents

Chapter 1. Introduction

What is ADSL	5
VisionNet 708 Layout and LED Description	6
VisionNet 708 Specification	9

Chapter 2. Before Installation

Safety Check-	11
The climate condition Check-	11
System Requirement Check	12
VisionNet 708 Package Check	13

Chapter 3. Installation Of VisionNet 708

Installation VisionNet 708	15
Connect and Disconnect the Internet	30





Chapter 1. Introduction

This chapter provides the brief concept of ADSL, and the external form and specification of VisionNet 708.

This chapter covers the following topics:

What is ADSL

VisionNet 708 Layout and LED Description

VisionNet 708 Specification





What is ADSL

ADSL (Asymmetric Digital Subscriber Line) is a technology for transmitting digital information at a high bandwidth on existing phone lines to homes and businesses. Unlike regular dialup phone service, ADSL provides continuously available, "always on" connection. ADSL is asymmetric in that it uses most of the channel to transmit downstream to the user and only a small part to receive information from the user. ADSL simultaneously accommodates analog (voice) information on the same line. ADSL is generally offered at downstream data rates from 512 Kbps to about 8 Mbps, upstream data rates up to 1Mbps.

ADSL was specifically designed to exploit the one-way nature of most multimedia communication in which large amounts of information flow toward the user and only a small amount of interactive control information is returned.



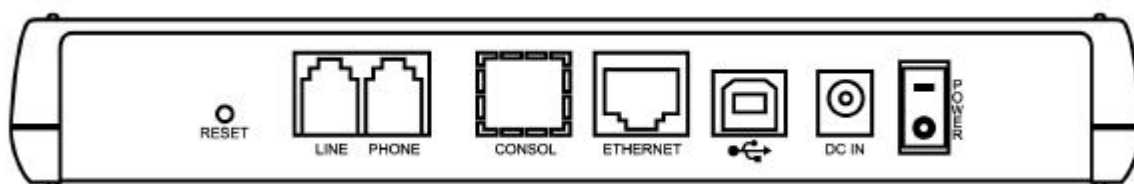
VisionNet 708 Layout and LED Description



VisionNet 708 (Front view)



Location	Label	Status	Description
	POWER	VisionNet 708 power status	It ' s On when VisionNet 708 is connected to PC which is working.
	USB	USB is awake	USB connected PC which is working
	Tx/Rx	Data transmission	It ' s flashing whenever data is transmitted over VisionNet 708
	SYNC	ADSL Line initialization and synchronization	It ' s remain on after ADSL line synchronization achieved
	LAN	VisionNet 708 LAN status	It ' s On when VisionNet 708 is connected to PC LAN which is working.
	PPP	PPP Connected status	It ' s On when VisionNet 708 is connected to PPP which is working.



Location	Label	Port	Function
	LINE	ADSL Line Port	Connects telephone Line cable in ADSL line.
	PHONE	Telephone Connection Port	Connects the telephone cable in your telephone.
	Console	Console Port (Option)	Console Setting Port.
	Ethernet	Ethernet Port	Connects Ethernet cable from the LAN port in your PC.
	USB	USB Port	Ethernet Firmware Upgrade (Option)
	DC IN	DC IN Port	Connects Adaptor
	Power	Power Switch	VisionNet 708 Ethernet Power On/Off



VisionNet 708 Modem Specification

	Specification
Size (outfit)	200mm X 147mm
Power (V / A)	600mA 18V
Operating Temperature	5 ~ 45
ADSL Standards compliant	ANSI T1.413 Issus 2, ITU G.DMT(G.992.1), ITU G.Lite(G.992.2)
Connection Speed	Down Stream(Rx) : 8Mbps(Max) , Up Stream(Tx) : 860Kbps (Max)
Modulation	DMT (Discrete multi -tone)
Connector	Telephone Line(RJ 11) connector 2 port , Ethernet 1 port, USB Line 1 port,
Interface	Ethernet Interface
Operating System	Windows 98/ 98SE/ME/NT 4.0/2000/XP, Macintosh, Linux, UNIX compliant
Protocol	PPP Over ATM (RFC 2364) Bridged Ethernet Over ATM (RFC 1483) Classical IP Over ATM (RFC 1577)
P V C value range	VPI: 0~255 , VCI :0~65,535

<<Notice >>

The connection speed of VisionNet 708 may vary depending on your ADSL service, the ADSL line condition, your PC specification and the distance between ADSL modem and Central Office of your local ADSL service provider.





Chapter 2. Before Installation

This chapter provides basic safety information before installation. Please read this chapter very carefully before installation.

This chapter covers following topics:

Safety Check

The climate condition Check

System Requirements Check

VisionNet 708 Package Check





Safety Check

Before installing and using VisionNet 708, please the following topics must be checked first.

Safety check related to the electricity, heat and water.

VisionNet 708 is Ethernet type ADSL modem, so you must connect VisionNet 708 to the Ethernet Port in your PC.

VisionNet 708 must be located in safe space such as near non-grounded extension cable, torn power cable and very close to the power outlet.

VisionNet 708 generates the heat when it is operating. It must not be exposed to heat trap conditions.

It must not be used near water, like a bathtub, kitchen sink or in a wet basement.

These environments could damage VisionNet 708 or effect the performance of VisionNet 708.

The climate condition Check

For installing VisionNet 708 in safe and being used properly, please be aware of the climate Condition first.

VisionNet 708 is connected either Desktop PC or Laptop PC, so check the climate conditions of your PC and follow those instruction first.

It ' s recommendable that VisionNet 708 is being used in same temperature and humidity.

The range of operating VisionNet 708 is

Operating temperature : 5 ~ 45

relative humidity : 10 ~ 85 % (non-condensation case)





System Requirements Check

Before installing and using VisionNet 708, please the following topics must be checked first.

PC Operating System

Windows 95

Windows 98

Windows 98SE

Windows Millennium Edition

Windows 2000 Home Edition & Professional

Windows XP Home Edition & Professional

Macintosh, Linux, UNIX

System Specification (Recommended).

The performance of VisionNet 708 depends on your system specification, so following specification is recommended.

OS : Windows 98/98SE

CPU :Pentium III 350MHz or higher

System Memory(RAM): 64MB or higher

LAN Card : Connect Ethernet Port





VisionNet 708 package Check

When opening VisionNet 708 Package, please check the following items in the Package.



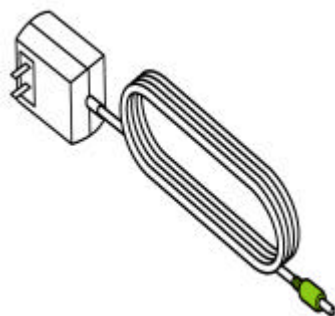
VisionNet 708 (ADSL Ethernet Modem)



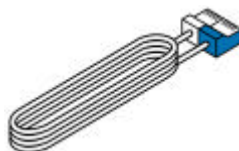
User's manual



CD



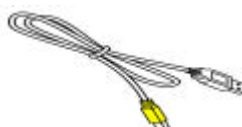
Power Adaptor



Direct UTP Cable (RJ-45)



Telephone Cable (RJ-11)



USB Cable (USB-AB)

Items : Quantity

VisionNet 708 (ADSL Ethernet Modem) : 1

Power Adaptor : 1

USB Cable (USB-AB) : 1

User's manual : 1

Direct UTP Cable (RJ-45) : 1

Telephone Line Cable (RJ-11) : 1

Manual and USB Driver CD : 1



Chapter 3. Installation of VisionNet 708

This chapter provides the brief concept of ADSL, and the external form and specification of VisionNet 708.

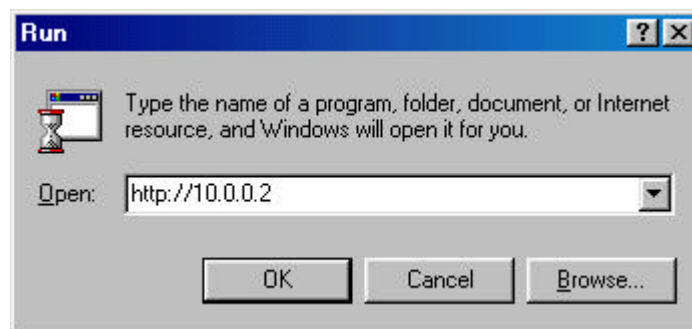
This chapter covers the following topics:

- Installation VisionNet 708

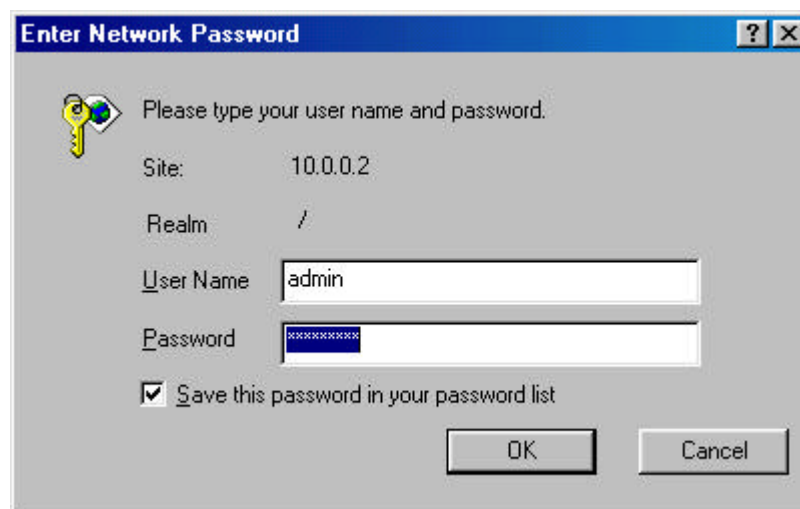
- Connect and Disconnect the Internet

Installation VisionNet 708

1. Start Internet Explorer to view or reset the configuration of the ADSL
And type 10.0.0.2 at [Open] and click [OK] button.



2. Enter “admin ” at [User Name], “visionnet ” at [Password] as below and click [OK] button to proceed.





ADSL Home Page : appearing home page of VisionNet 708 ADSL and Device,
DSL, WAN Interfaces, LAN Interfaces, Services Summary

DQ Technology Manager GUI - Microsoft Internet Explorer

File Edit View Favorites Tools Help

Back Forward Stop Refresh Home Search Favorites History Mail Print

Address <http://10.0.0.2/home.ssi> Go Links »

dq TECHNOLOGY

Home LAN WAN Bridging Routing Services Admin

Home | Quick Configuration

System View

Use this page to get the summary on the existing configuration of your device.

Device		DSL			
Name:	Titanium	Operational Status:	Showtime/Data		
H/W Version:	810012	Last State:	0x69		
S/W Version:	VIK-1.37.020524a/T93.3.8	Standard:	Multimode		
Serial Number:	123456789abcdx	Up		Down	
Mode:	Routing And Bridging	Speed	Latency	Speed	Latency
Up Time:	0:3:7	896 Kbps	Interleaved	8128 Kbps	Interleaved
Time:	Thu Jan 01 00:03:07 1970				
Time Zone:	GMT				
DST:	OFF				
Host Name:	-				
Domain Name:	-				

WAN Interfaces							
Interface	Encapsulation	IP Address	Mask	Gateway	Lower Interface	VPI/VCI	Status
ppp-0	PPPoE	0.0.0.0	0.0.0.0	0.0.0.0	aal5-0	0/35	

Lan Interface							
Interface	Mac Address	IP Address	Mask	Lower Interface	Speed	Duplex	Status
eth-0	00:85:A0:01:01:00	10.0.0.2	255.255.255.0	-	Auto	Auto	
usb-0	-	10.0.1.2	255.255.255.0	-	-	-	

Services Summary							
Interface	NAT	IP Filter	RIP	DHCP Relay	DHCP Client	DHCP Server	IGMP
eth-0	✓ inside	✗	✗	✗	✗	✓	✗
ppp-0	✓ outside	✗	✗	✗	✗	✗	✗
usb-0	✓ inside	✗	✗	✗	✗	✓	✗

Modify Refresh Help

Done Internet



DSL : You can find the connecting of ADSL and CRC, HEC

DSL Status

This page displays DSL Status Information

Refresh Rate: 10 Seconds

Counters	Local		Remote	
	Intrlvd	Fast	Intrlvd	Fast
FEC:	0	0	0	0
CRC:	2	0	0	0
NCD:	0	0	0	0
OCD:	0	0	-	-
HEC:	0	0	0	0
SEF:	0		0	
LOS:	0		0	

Operational Status: Showtime/Data Loop Stop

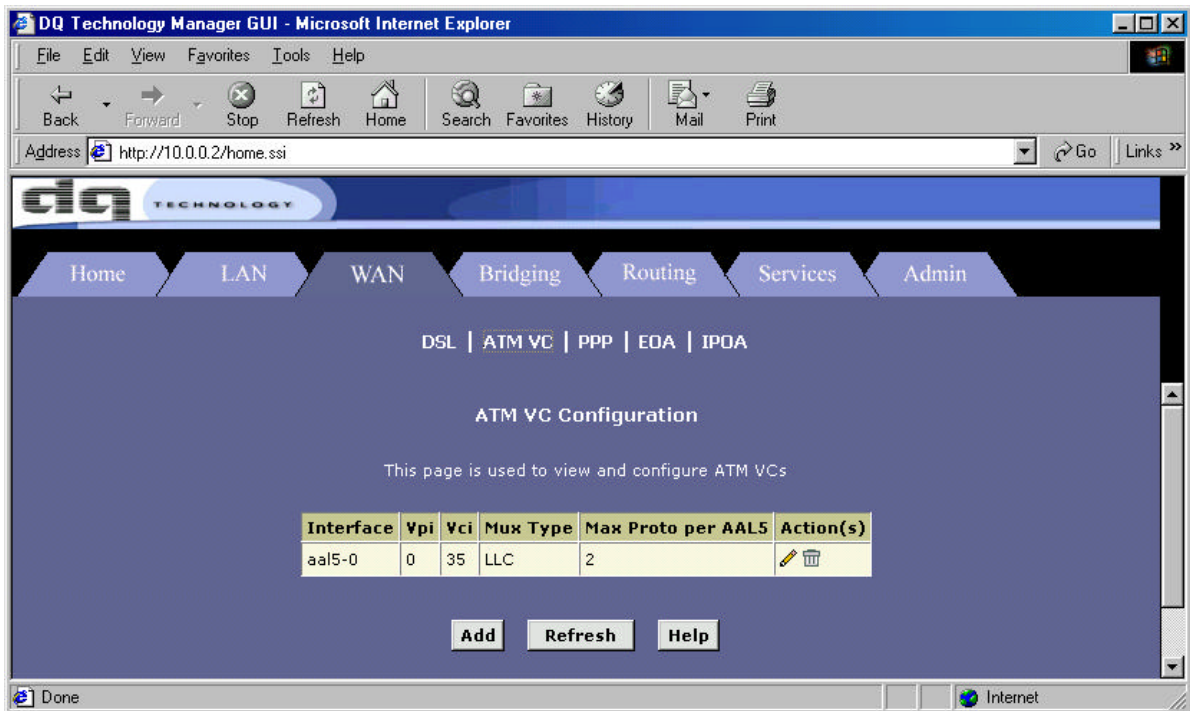
Last Failed Status: 0x69

Startup Progress: 0xAD

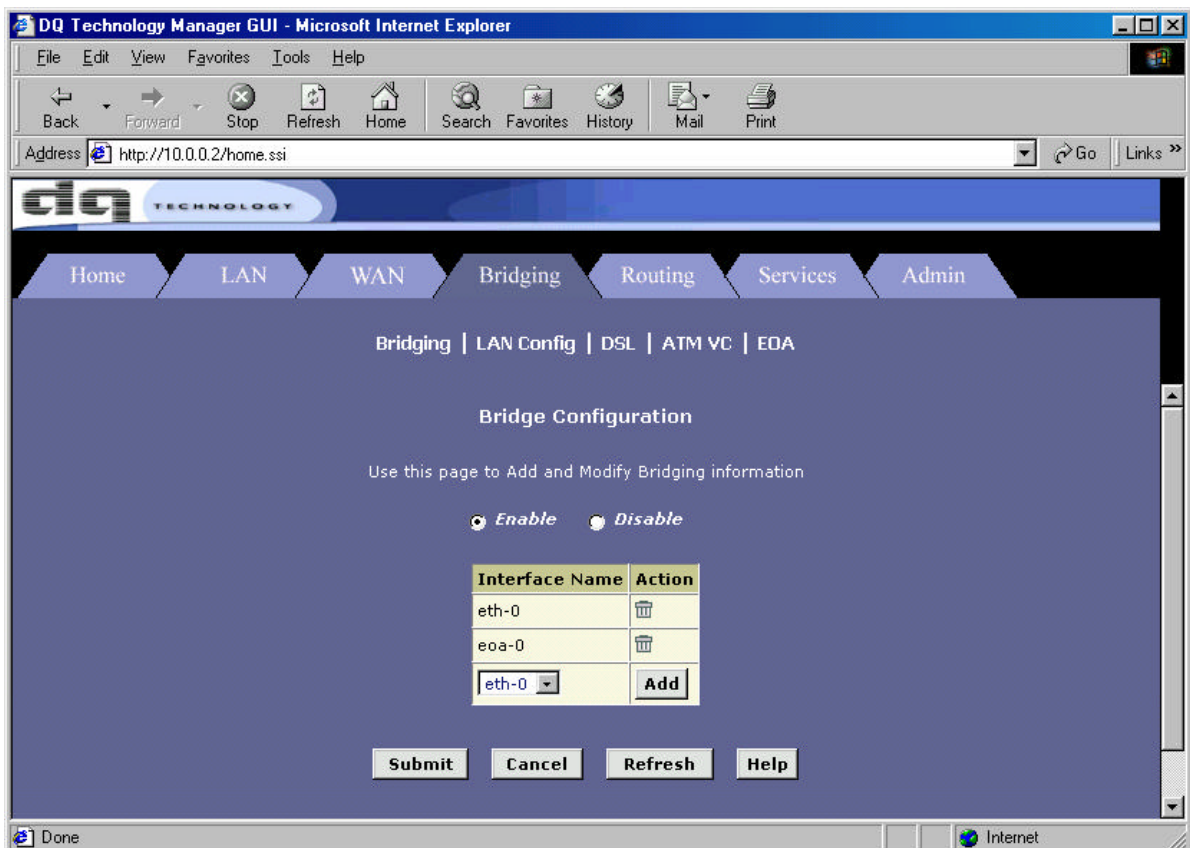
Buttons: Clear, DSL Param, Stats, Refresh, Help

ATM VCC : Circumstance in ATM VCC Configuration you can set the Value of VPI VCI





Bridging : You should use Enable when you do the EoA(Bridge Mode) in Bridge configuration.





LAN : You can find and adjust the IP Address and Subnet Mask of LAN in LAN Configuration, the IP Address and Subnet Mask of USB in USB Configuration.

DQ Technology Manager GUI - Microsoft Internet Explorer

File Edit View Favorites Tools Help

Back Forward Stop Refresh Home Search Favorites History Mail Print

Address <http://10.0.0.2/home.ssi> Go Links >>

dq TECHNOLOGY

Home LAN WAN Bridging Routing Services Admin

LAN Config | DHCP Mode | DHCP Server | DHCP Relay

LAN Configuration

Use this page to set the LAN configuration, which determines how your device is identified on the network.

LAN Configuration	
System Mode:	Routing And Bridging
LAN IP Address:	10 0 0 2
LAN Network Mask:	255 255 255 0
Use Dhcp:	<input checked="" type="radio"/> Disabled <input type="radio"/> Remote <input type="radio"/> Local

USB Configuration	
USB IP Address:	10 0 1 2
USB Network Mask:	255 255 255 0

Submit Cancel Refresh Help

Done Internet



NAT : If you use the ADSL in Router, **[NAT]** should be in condition “Enable”

- NAT Configuration

DQ Technology Manager GUI - Microsoft Internet Explorer

File Edit View Favorites Tools Help

Back Forward Stop Refresh Home Search Favorites History Mail Print

Address <http://10.0.0.2/home.ssi> Go Links »

dq TECHNOLOGY

Home LAN WAN Bridging Routing Services Admin

NAT | RIP | FireWall | IP Filter | DNS | Blocked Protocols

NAT Configuration

Use this page to configure Network Address Translation, a security protocol in which the device translates the IP addresses of your LAN computers to new addresses before sending data out on the Internet.

NAT Options: **NAT Global Info**

☒ Enable ☐ Disable

NAT Global Information	
TCP Idle Timeout(sec):	86400
TCP Close Wait(sec):	60
TCP Def Timeout(sec):	60
UDP Timeout(sec):	300
ICMP Timeout(sec):	5
GRE Timeout(sec):	300
Default Nat Age(sec):	240
NAPT Port Start:	50000
NAPT Port End:	51023

Submit Global Stats Cancel Refresh Help

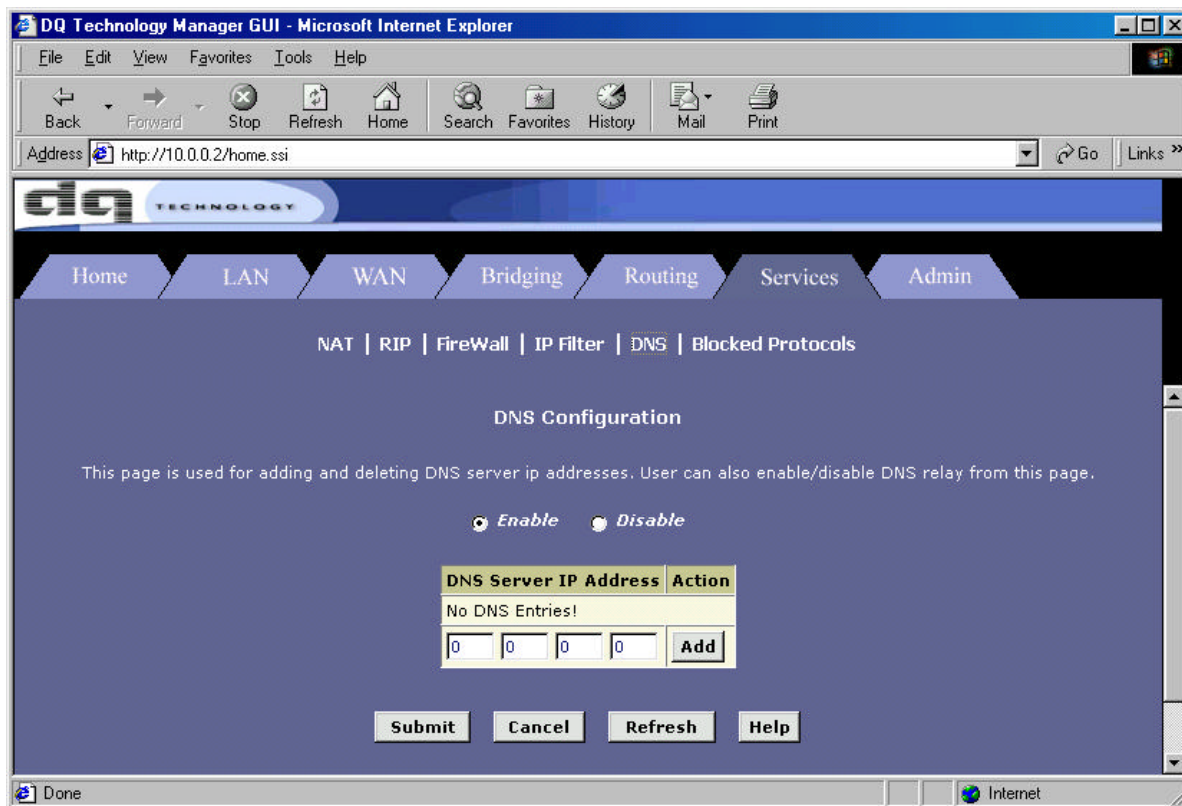
Internet

DNS : In DNS Configuration. You should set the **[DNS Sever]** when using static

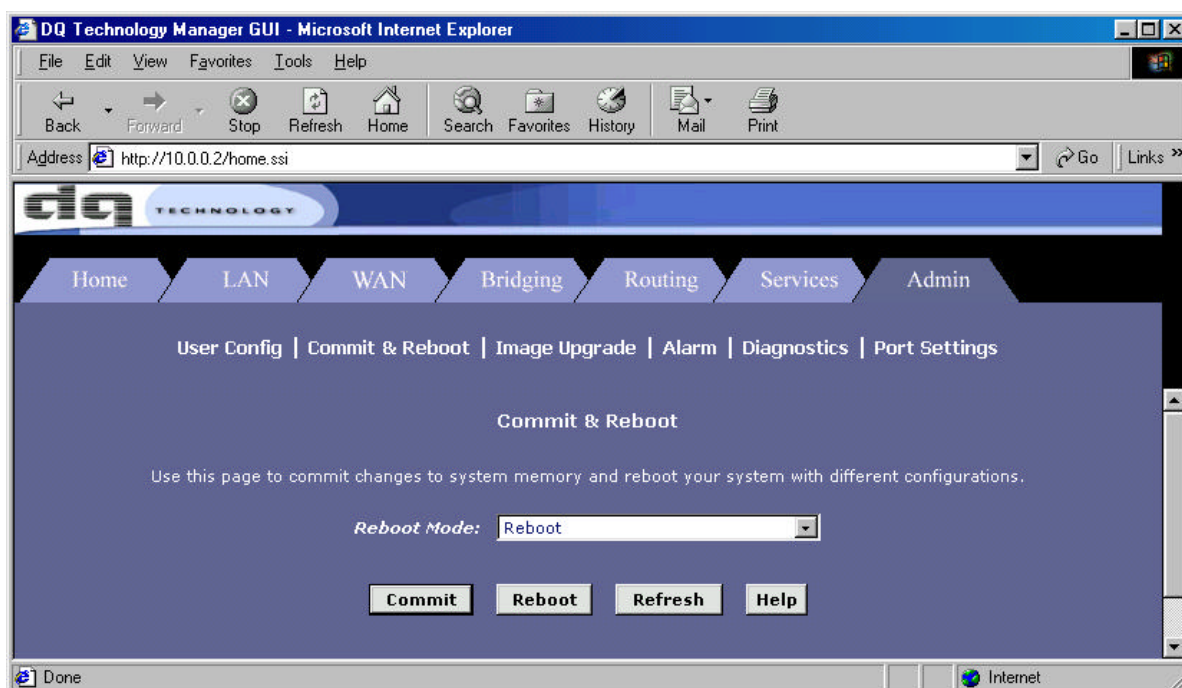




IP(IPoA) (Provided by ISP)



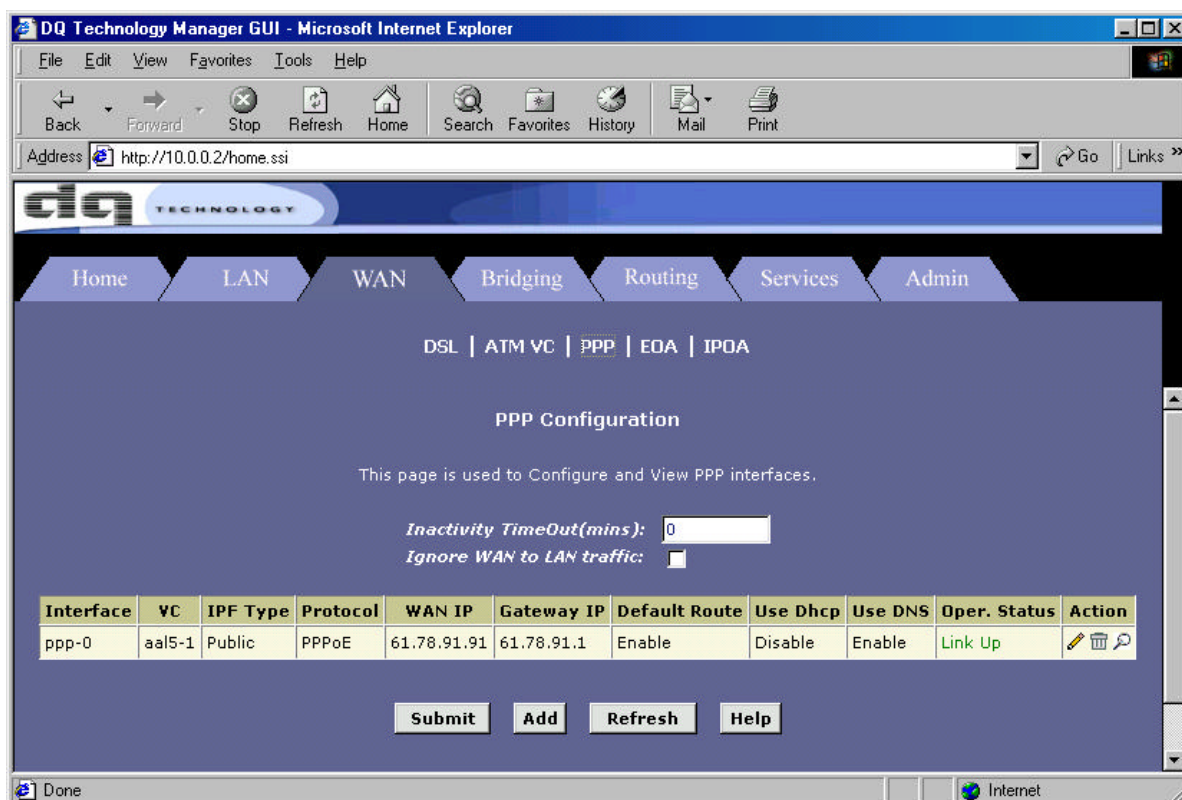
Commit & Reboot : It is Saving the adjust of ADSL click the **[commit]** button.





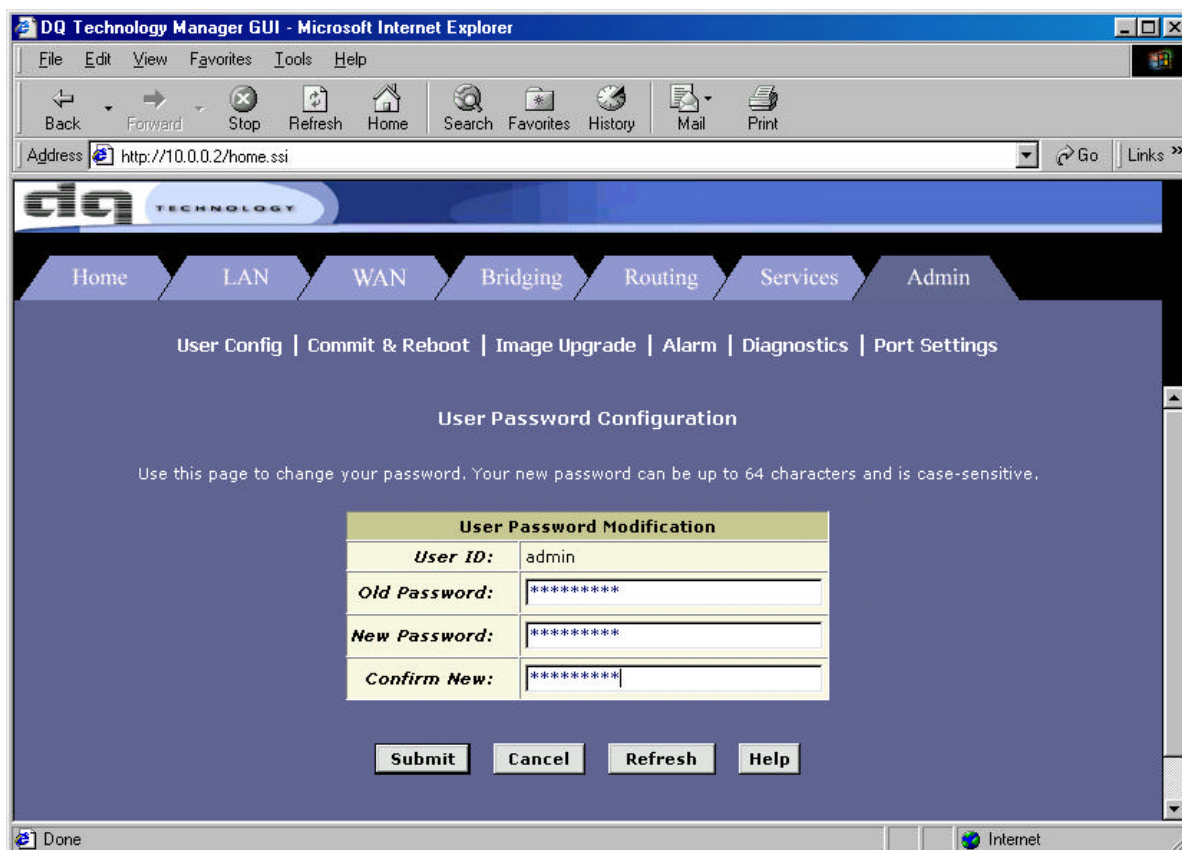
PPP : PPP Configuration set the PPPoA & PPPoE of ADSL.

After adjusting you should click the **[Submit]** button, and change the **[Commit&Reboot]**, you should saving the configuration in circumstance of Commit and Reboot





User Password Configuration : This page is modify **[User Password]** of ADSL.
You be sure that click **[Submit]** button, and save that you did in **[Commit & Reboot]**.

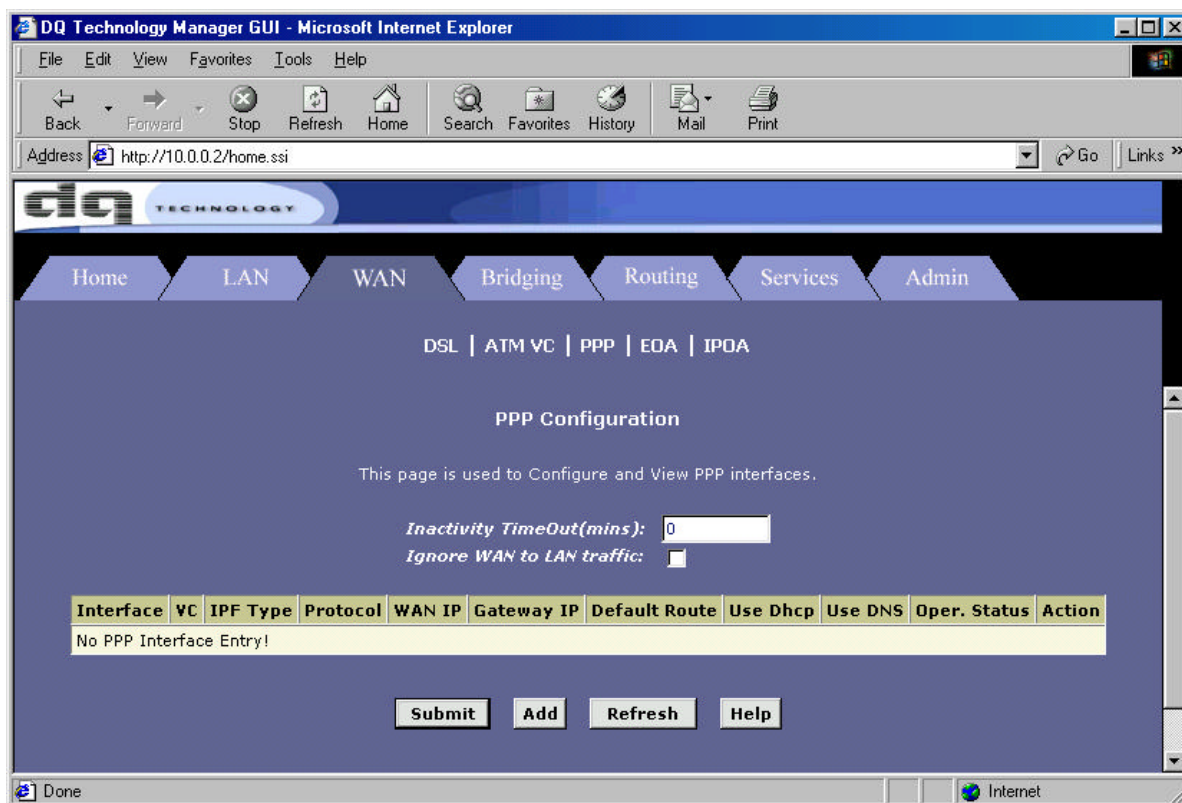


1. Using the PPP(PPPoE & PPPoA) Mode





1-1. Click [WAN] tap. Click “PPP” in upward row of this page, and you can find [Add] button in next page.





1-2. modifying in [PPP Interface - Add].page

- ATM VC : aal5-1(setting value in ATM VC Provided by ISP)
- Protocol : Choice PPPoA or PPPoE
- [Use Dhcp & Use DNS] setting [Enable] condition.
- Insert in the ID & Password from Provided ISP, and Click [Submit] button.
- You be sure that save you did in [Commit & Reboot] .

PPP Interface - Add - Microsoft Internet Explorer

Basic Information

PPP Interface:	ppp-0
ATM VC:	aal5-1
IPF Type:	Public
Status:	Start
Protocol:	<input type="radio"/> PPPoA <input checked="" type="radio"/> PPPoE
Service Name:	ISP
Use Dhcp:	<input type="radio"/> Enable <input checked="" type="radio"/> Disable
Use DNS:	<input checked="" type="radio"/> Enable <input type="radio"/> Disable
Default Route:	<input checked="" type="radio"/> Enable <input type="radio"/> Disable

Security Information

Security Protocol:	<input checked="" type="radio"/> PAP <input type="radio"/> CHAP
Login Name:	username
Password:	*****

Submit Cancel Help