

NEW COMM WORLD



TFT LCD Monitor

Expert Panel TFT LCD for good results

User's Guide

NLM155A1...

INDEX

Basic Installation

Warning	-----	2
Connecting PC	-----	3
Basic Installation	-----	4

OSD Operation

Monitor		
-OSD Menu and Set-up Procedure	-----	5

The Other

Trouble Shooting	-----	11
Product Specification	-----	12
Word Appendix	-----	13
Warranty Card & FCC Compliance Statement	-----	14

Warning

- 1** Turn off the display cleaning its surface.
- 2** Periodically wipe its surface with a soft and dry cloth.
- 3** Do not use extremely hot or humid environment during operation.
(Temperature:10~40℃, Humidity:10~80%RH)
- 4** Avoid area susceptible to dust.
- 5** Use only the quality a safety approved AC/DC adapter.
- 6** Avoid direct sunlight.
- 7** Plug off the AC power cord during not operating LCD Monitor for a long time.
- 8** Please make sure if the back stand is down perfectly. When you make the monitor as a wall type.
- 9** Please put the monitor up side down when you connect the VGA cable with your PC system.
- 10** please use appropriate screws.
Please take apart the base for wall type monitor.

Connecting PC



1. Turn Off all the equipment first.
2. Connect the adapter power cord to main power connector (Adapter standard Input: 110V/220V, 47~63Hz)
3. Connect adapter DC output to monitor DC Input Connector.
*Please do not use any other kinds of adapter.
4. Connect analog 15-Pin VGA cable between PC and monitor.
5. Make sure all the cables and power are well connected then, please turn on the power.

• Using monitor speaker

1. The PC must have Line Out connector. If you are using PC sound Card, please decrease the sound output before start.
2. Connect Line In Cable of Audio to Sound Card Line out connector of PC and monitor Line In connector.

Composition Part



Basic Installation

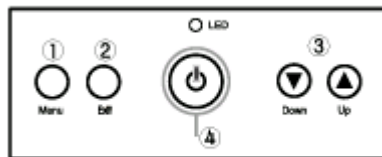
- For the better display adjust the each value of Monitor.



1. press Menu Button to call OSD menu.
2. Move the cursor to the Auto Adjust and press Menu button.
3. Press Menu button to call the main menu
And press Menu Button again for the basic Setting.
4. Adjust the each value of Basic Setting.
For the better display.
5. Press the EXIT Button to finish OSD operation.

OSD Operation

•OSD (Example)



***LCD Monitor Power ON/OFF

- ① **MENU** : Menu on/off. & Select.
- ② **EXIT** : Save & Exit
- ③ **ADJUSTMENT** : Scroll menu bar. Increase/Decrease setting value.
- ④ **POWER** : LCD monitor power on/off

MODE	LED	
Power off	-	-
No signal	RED	Always on
Suspend/Stand-by	Amber	Blink
Power on	Green	Always on

•OSD Menu and Set Procedure

1. Main Menu

Ver 1.10 ← **BIOS Revision No.**

- Basic Settings ▶
- Image Position ▶
- System ▶
- Sound ▶
- Auto - Adjustment
- Discard Change
- Save / Exit

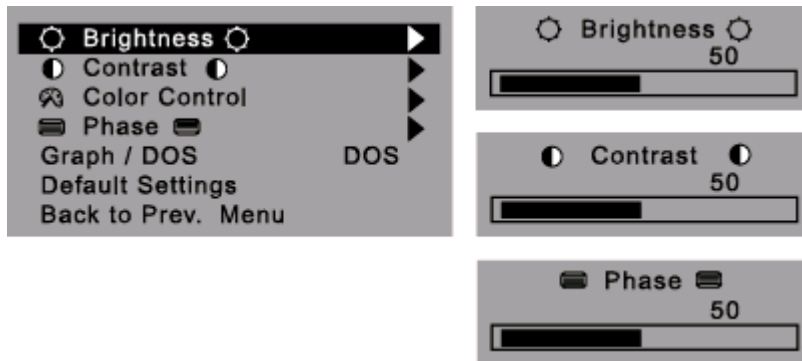
U 1024 x 768
H + 60, 1KHz V + 75, 0Hz

↑ **Status Display**

1024 x 768 H-56.5k V+70
S : Standard mode, **U** : User mode
1024 x 768 : Display mode
H-56.5k : Horizontal clock rate in KHz
V+70 : Vertical clock rate in Hz
+ : Positive polarity sync.
- : Negative polarity sync.

OSD Operation

2. Basic Setting



Brightness

Image brightness control

Contrast

Image contrast control

Color Balance

Individual contrast control menu for Red, Green and Blue.

Phase

Image sharpness control and noise elimination

Graph/DOS

DOS mode select (640 x 400, 720 x 400)

Default setting

Cancel user's setting and return to factory setting

Back to Prev. Menu

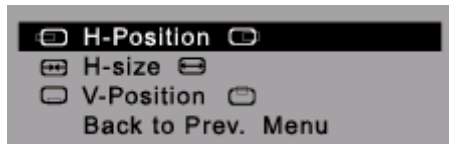
Return to previous menu

3. Color Control Sub-menu



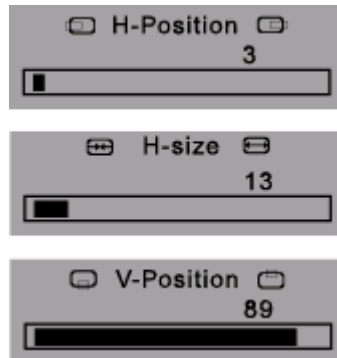
OSD Operation

4. Image Position

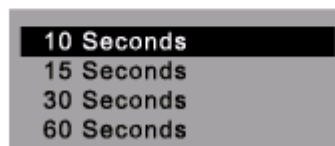
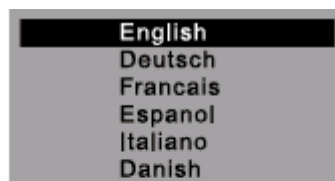
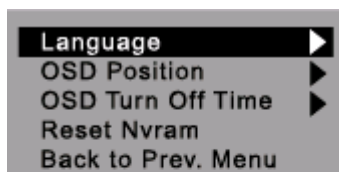


Horizontal Position
Horizontal Size
Vertical Position
Back to prev. menu

Image H-position control
 Image width control
 Image V-position control
 Return to previous menu



5. System



Language
OSD Position
OSD Turn off Time
Reset Nvram
Revert
Back to prev. Menu

Language selection for OSD menu
 OSD menu location
 OSD lasting time
 Nvram data reset and initial
 Abort adjust data
 Return to previous menu

OSD Operation

6. Auto-Adjust

When you select Auto-Adjustment, the monitor checks present VGA signal And find tune display quality automatically include screen positions, size And phase adjustment. The best pattern for this function is 'windows Shutdown' mode.

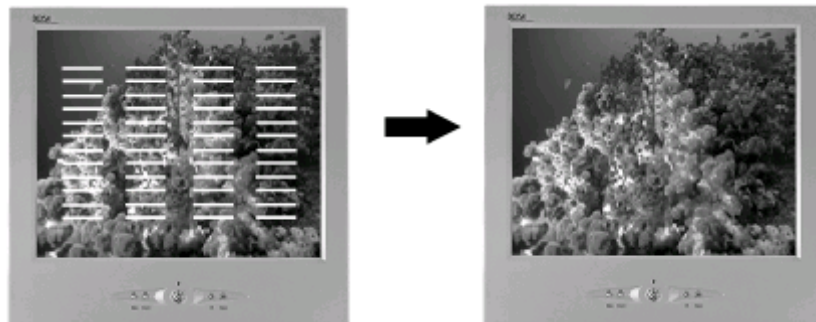
** Please do not use this function in DOS mode, black background or moving image mode. The monitor can be subjected to halt. If you encountered to this phenomenon, please reset OSD by selecting 'BASIC SETTING DEFAULT -SETTINGS' menu or press Inc. and Dec. button together when OSD is not activate on the screen.

Then your monitor will go back to 'Factory Default' setting.

7. OSD Setting procedure

[Horizontal Size Adjustment]

1. Press 'MENU' button to display OSD main menu.
2. Move scroll bar to 'IMAGE POSITION' and then press 'MENU' button
3. Move scroll bar to 'H-SIZE' and then press 'MENU' button
4. Pressing "DEC." or "INC." button, adjust horizontal size to fill display area. If horizontal size of your image is not fine tuned, you may observe periodic Vertical noisy bars on your image. This noisy bars can be disappeared by Adjusting horizontal size.
5. Select 'Save/Exit' menu to save current setting.
Or Press 'EXIT' button to save current setting & exit OSD MENU.



OSD Operation

8. Phase Adjustment

1. Press 'MENT' button to display OSD main menu.
2. Move scroll bar to 'BASIC SETTING' and then press 'MENU' button
3. Move scroll bar to 'PHASE' and then press 'MENU' button
4. Pressing 'DEC' or 'INC' button, remove noise and sharpen the image.
* If the phase of your monitor is not fine tuned, you may observe unstable Horizontal noisy lines and horizontal cross talks stretching from the edge of small widows on your display.
These noises can be disappeared by adjusting phase.
* If you change your display to 'Windows shut down mode' you can adjust it easily. { click 'start' icon at the bottom right side, then click 'windows shutdown'. You can enter to 'Windows shutdown mode'. After finishing phase adjustment, click 'no' of the shutdown window to Return to original windows display.}
5. Select 'Save/Exit' menu to save current setting.
Or Press 'EXIT' button to save current setting & exit OSD MENU.

If you do 'AUTO ADJUSTMENT' the monitor will try to find out best condition of Phase setting. But depends on the display contents, it could not find the best Setting. If you are not satisfied with the auto adjustment, please fine tune the Phase manually as described above.



9. Brightness and Contrast Adjustment

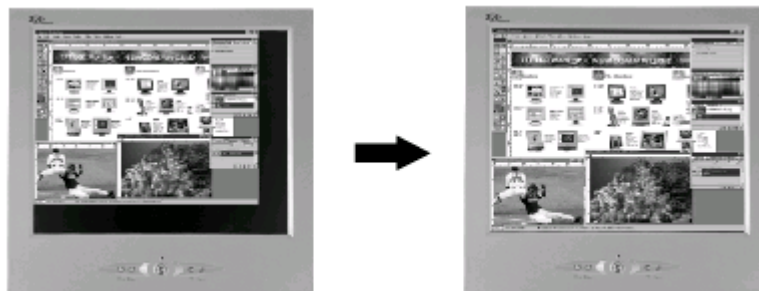
1. Press 'MENU' button to display OSD main menu.
2. Move scroll bar to 'BASIC SETTING' and then press 'MENU' button
3. Move scroll bar to 'BRIGHTNESS' or 'CONTRAST' and then press 'MENU' button
4. Pressing 'DEC' or 'INC' button, you can adjust your image.
5. Press 'MENU' button to save current setting and move to previous menu.
Or press 'EXIT' button to save current setting & exit OSD MENU.

OSD Operation

10. Horizontal and vertical position Adjustment

1. Press 'MENU' button to display OSD main menu.
2. Move scroll bar to 'IMAGE POSITION' and then press 'MENU' button.
3. Move scroll bar to 'HORIZONTAL POSITION' or 'VERTICAL POSITION' And then press 'MENU' button.
4. Pressing 'DEC' or 'INC' button, you can locate your image to the center of your display.
5. Select 'Save/Exit' menu to save current setting.
Or Press 'EXIT' button to save current setting & exit OSD MENU.

You can use 'AUTO ADJUSTMENT' OSD menu to adjust the image size and Position in WINDOWS mode automatically.



11. Other Adjustment

You can modify your OSD menu according to your preference.
The procedure is Main menu-System-Language/OSD Position/OSD Turn off time. You can monitor the input signal in the statue display Row of system menu window.

[Volume control]

Pressing 'DEC' or 'INC' button when OSD is not activated on the screen.
You can control audio volume.

Trouble Shooting....

1 Red LCD and Blue screen or No screen display.(Check signal & Cables)

- 1 Press Source button to check present source circumstance.
 - Check VGA cable or power code is well connected.
- 2 To change the other source, use UP(-), DOWN(+) button to move to another category, after pressing SOURCE button and press MENU button or press # 13 button of the Remote Controller.
- 3 For Direct Source change.
 - *Chang to PC (Use Only with Analog RGB)
 - Key : Press UP(-), DOWN(+) button at the same time.

2 It takes 2~3 seconds from power off to power on of monitor.

Product Specification

MODEL		SOSA NLM155A1
Resolution		1024*768 XGA
Color	Standard Color	262,144 Color
	Max, Color(Dithering)	Full Color
Brightness		200 cd/m ² (nit)
Contrast Ratio		200:1 Type
Viewing Angle(U/D/L/R)		45°/45°/60°/60°
PC Color Signal	H-Frequency	30~70 KHz
	V-Frequency	56~85 Hz
	Signal Level	0.7Vp-p
Panel	Type	Amorphous Si TFT-LCD
	Actual Display Size	307.2*230.4mm
	Diagonal Length	15.1",383.54mm
Video/TV	Input Signal Type	N/A
	Color Signal Type	N/A
	Sound Signal Type	M/N
	Video/TV Signal Type	N/A
Plug & Play	DDC	DDC1/DDC2B
Power Voltage		AC100~240V,60/50Hz,DC12V/4.5A
Power Consumption	Standard	30Watt
Audio Output		2Watt+ 2Watt(1KHz)
Size	Product Size(W*H*D)	15.9"*16.0"*7.3
	Box Size(W*H*D)	406*408.4*184.8mm
Weight	Net	3.9Kg
	Gross	6.0Kg

Word Appendix

OSD (On Screen Display)

Display about screen information for monitor users.

Brightness

Adjust the level of Darkness and Brightness by Back light of the LCD.

Contrast

Adjust the brightness and darkest parts of the screen.

Saturation

Adjust the color density based on White color. If the color density increases, the color approaches to original color from White color.

Resolution

It is defined by number of vertical & horizontal point and is represented the elaboration of the displays.

Bigger resolution displays much information on the screen and easier to work with many windows.

VGA MODE

Resolution	H-Frequency (KHz)	V-Frequency (Hz)	CLK Frequency (MHz)	H/V
VGA,(640*480)	31.469	59.940	25.175	(-/-)
VGA,(640*480)	37.500	75.000	31.500	(-/-)
VGA,(640*480)	43.269	85.008	36.000	(-/-)
SVGA,(800*600)	46.875	75.000	49.500	(+/+)
SVGA,(800*600)	53.674	85.061	56.250	(+/+)
XGA,(1024*768)	48.363	60.004	65.000	(-/-)
XGA,(1024*768)	60.023	75.029	78.750	(+/+)
XGA,(1024*768)	68.677	84.997	94.500	(+/+)

“B” Device

This product has been passed EMI standard test therefore, it is available is for official uses and all other areas.(A Devices is for official uses and B Devices has less.

Warranty Card

- This warranty card will not be issued, please keep with the manual.

Product	NLM155A1
Warranty Period	
Purchase Date	
Customer Name	
Seller	Name
	Address
	Phone

This product has been passed EMI standard test therefore, it is available is for official uses And all other areas.(A Devices is for official uses and B Devices has less.

NewComm World Co., Ltd or Seller warrants SOSA-NLM155A1, if properly installed and Used, will be free from defects in material and workmanship and will substantially conform to NewComm World's publicly available specifications for a period of one (1) year after the date of the SOSA-NLM155A1 purchased (whether purchased separately or as a part of a computer system).

If the SOSA-NLM155A1 which is the subject of this warranty fails during the warranty period For reasons covered by this warranty NewComm World Co., Ltd or Seller will repair the SOSA-NLM155A1 by means of hardware and/of firmware, or if NewComm World Co., Ltd Or Seller is unable to repair it replace failed SOSA-NLM155A with another one.

FCC Compliance Statement

Caution : Any changes or modifications in construction of this device which are not expressly approved by the party responsible for compliance could void the user's authority to operate the equipment.

Note : This equipment has been tested and found to comply with the limits for a Class B digital device, pursuant to part 15 of the FCC Rules. These limits are designed to provide reasonable protection against harmful interference in a residential installation. This equipment generates, uses and can radiate radio frequency energy and, if not installed and used in accordance with the instructions, may cause harmful interference to radio communications, However, there is no guarantee that interference will not occur in a particular installation. If this equipment does cause harmful interference to radio or television reception, which can be determined by turning the equipment off and on, the user is encouraged to try to correct the interference by one or more of the following measures;

- Reorient or relocate the receiving antenna.
- Increase the separation between the equipment and receiver.
- Connect the equipment into an outlet on a circuit different from that to which the receiver is connected.
- Consult the dealer or an experienced radio/TV technician for help.