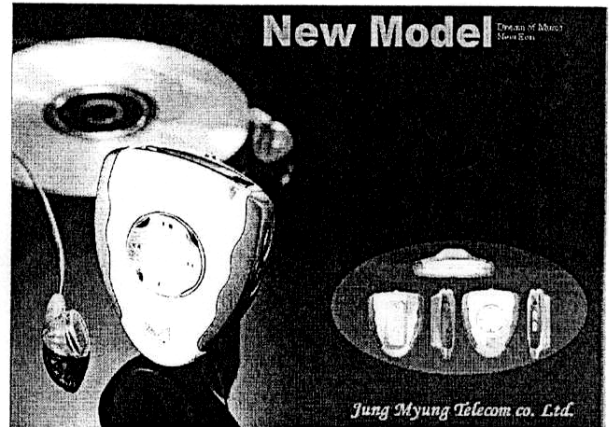

ATTACHMENT E USER' S MANUAL



MPiko can save lots of capacity.

MPiko is small in size and portable.

Mpiko is simple design.

The memory can be easily expanded by using SMC(Smart Media Card).

MPiko enjoy quality sound.

HIGH, LOW sound, it can replay all sound to original sound.

You can enjoy digital music to the full.

HIGH quality equalizer function guarantee almost original sound.

Specifications

Flash Memory – built-in 16M/32M/64M /128M

Smart Media Card – External 16M/32M/64M

Battery : DC 1.5V X 2EA (AAA Type)

Playing Time : 8 Hours

Size : 64 X 75 X 29mm

Weight : 54g (Except Battery)

Interface Port : USB Cable

Frequency Range : 20Hz ~ 20KHz

Mpiko contents & Specifications

Mpiko contents

Mpiko (MP3 Player)
Earphone & Necklace
USB Download Cable
User's Guide
Installation CD

Specifications

Windows 95, 98, 2000
16MB available RAM
10M available Main Memory

Before you Begin

Mpiko is designed to connect easily to your PC downloading digital audio files. Before you can enjoy digital audio with your Mpiko, you must first connect the USB port on your computer and then install the Mpiko software.

MPiko USB drive Connection

Mpiko uses the USB port of your computer to transfer digital audio files.

To set up Mpiko for audio file transfers, you need to attach the USB cable (provided) to your computer's USB port.

1. Locate the USB port on your computer.
2. Attach the larger end of the provided USB cable to the USB port, then connect the smaller end to the Mpiko.
3. Look out "New Hardware discover" Message Windows in screen. and then Insert CD of Installation software at the CD-ROM, After Click Enter.
4. You select the "MpikoUsbDrive" directory paths in the CD of Installation software, After Click Next.
5. Automatically, Finish the Install completely.

Installing Mpiko Software for the PC

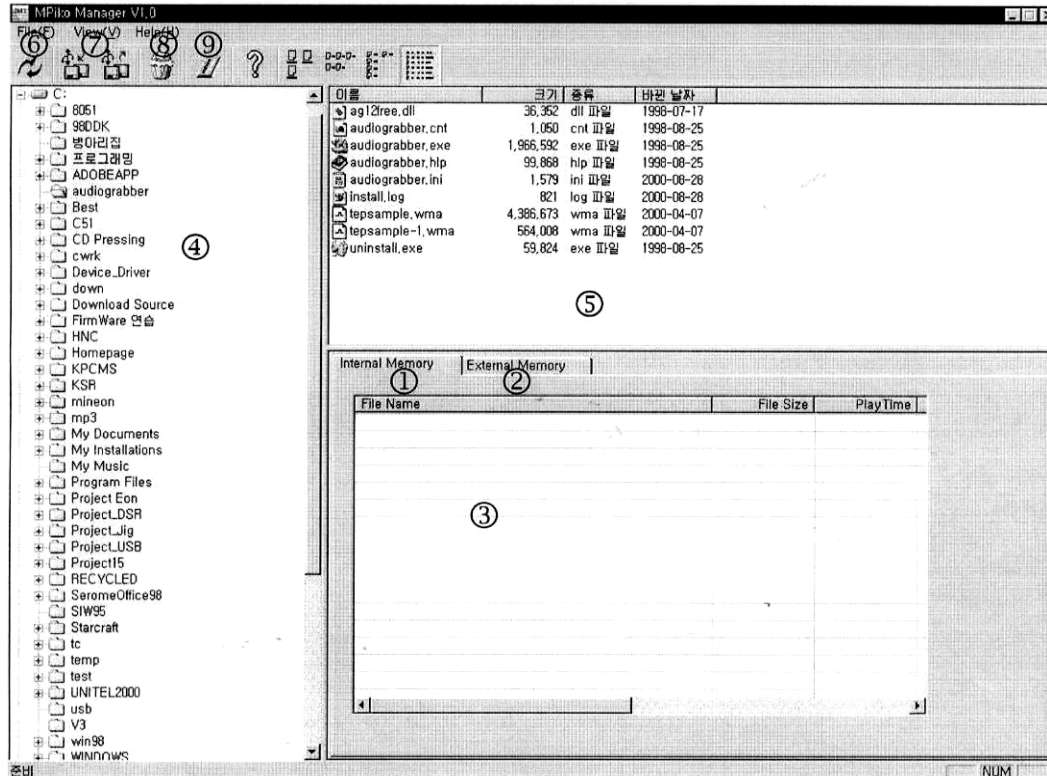
Installing the Mpiko Manager software is a quick and procedure. To install the software.

1. Turn on your computer. And Insert Mpiko Installation CD disk.
2. You select "MPIKO Manager.exe" in the CD Manager software. Then double-click the MPIKO-Manager.exe file.

Mpiko Software Manager Overview

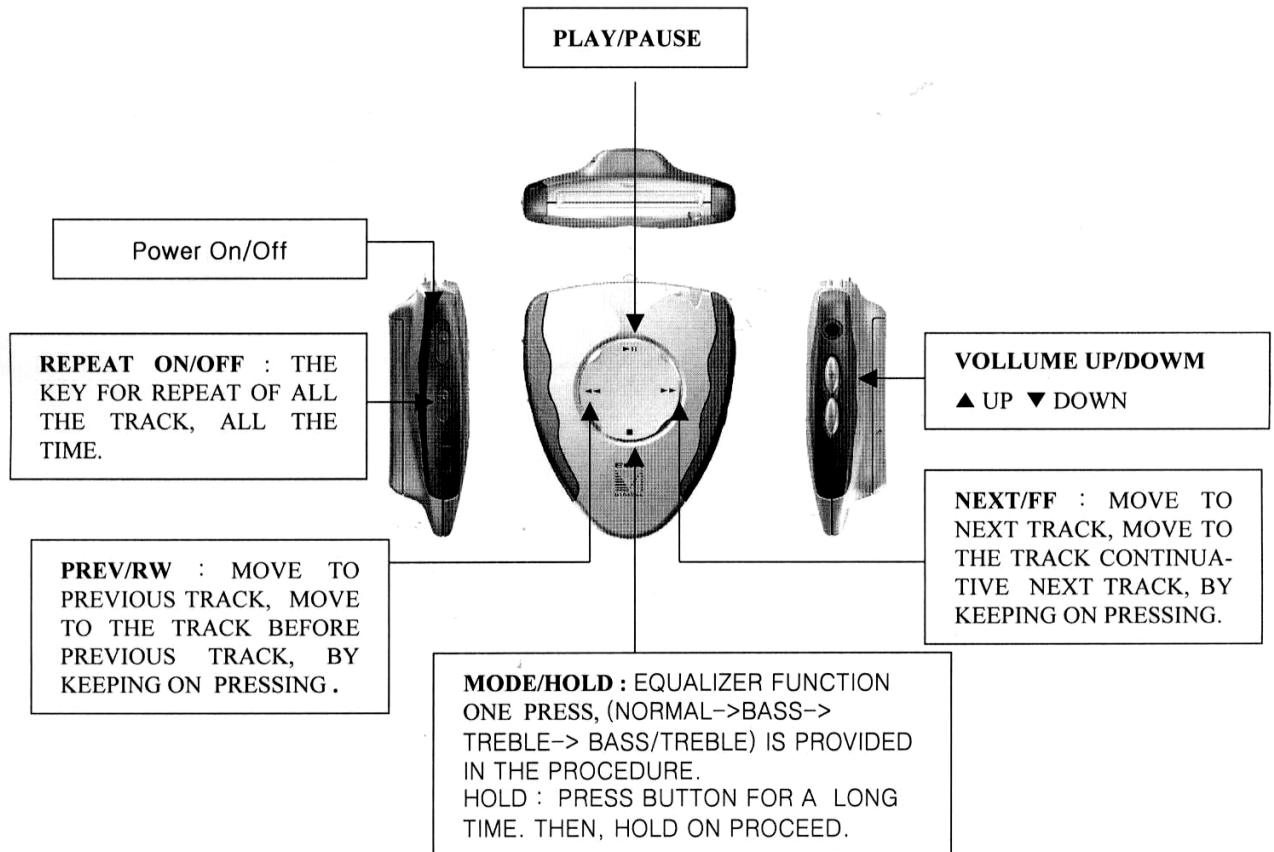
First, Click Windows' start button and drag menu in order of program, Mpiko explore.
And then click, Mpiko explorer

When Mpiko explorer is executed, the following menu is shown. Ready to use program .



- ① Internal Memory : Bottom select Flashmemory.
- ② External Memory : Bottom select Smart Media Card memory.
- ③ Storage Memory Windows : Windows see file list in the flashmemory / Smart Media Card.
- ④ Polder Windows : Polder of Manager Windows see directory to be Download/ UPlod from PC.
- ⑤ File of Windows : File of Windows see file to be Download/ UPlod from PC .
- ⑥ Refresh : All information will be renewed.
- ⑦ Download / Upload : Downloading flashmemory(Smart Media Card) from PC/ UPloding flashmemory(Smart Media Card) from PC
- ⑧ File deletion : The file to be selected is delete
- ⑨ FORMAT : All saved data is removed in the memory.

MPiko Hardware Overview



Precaution in Using “Mpiko”

- DO NOT USE “MPiko” IN PLACES WHICH ARE WET OR HUMID.
- DROP OR IMPACT ON “MPiko” LEAD TO BREAKAGE.
- DO NOT KEEP “MPiko” IN PLACES WHICH ARE HOT FOR A LONG TIME.
- UNLOCK THE HOLD SWITCH BEFORE OPERATING.
- USE DRY CLOTH TO CLEAN “MPiko”. DO NOT USE ANY CHEMICAL DETERGENT.
- KEEP “MPiko” OUT OF SAND, WATER AND OTHER MATERIAL.
- CHECK THE ARROW MARK OF ABOVE, BEFORE CONNECTION.
- CHECK THE TERMINAL OF BATTERY, BEFORE REPLACING BATTERY.
- SWITCH “MPiko” OFF BEFORE CONNECTION.

OBSERVE THE FOLLOWING BEFORE INSERTING SMART MEDIA CARD.

- SWITCH “MPiko” OFF BEFORE INSERTING S.M.CARD.
- DO NOT INSERT S.M.CARD IN OPERATION OR DOWNLOAD OF DATA.
- BE SURE TO DETACHMENT BUTTON, BACKSIDE, TO DETACH S.M.CARD OUT OF PLAYER.
- KEEP THE YELLOW-COLORED SURFACE(MEMORY) UPSIDE IN INSERTING S.M.CARD.

1 YEAR WARRANTY

WARRANTY CERTIFICATE

ITEM :

MODEL :

THE DATE OF PURCHASE:

CUSTOMER :

:

ADDRESS :

AGENT :

:

ADDRESS :

AFTER SALE SERVICE...

THE RIGHT OF CUSTOMERS

- ANY CUSTOMERS HAVE THE RIGHT TO GET 1 YEAR LONG FREE SERVICE FROM PURCHASE DATE, IN CASE THE PLAYER MALFUNCTION. BUT, IN CASE OF CUSTOMERS'S FAULT OR BREAKDOWN, CAUSED BY NATURAL DISASTER, THE REPAIR CHARGE SHOULD BE PAID, EVEN THOUGH THE TIME IS WITHIN WARRANTY PERIOD.
- THE FOLLOWING CASES ARE CONSIDERED TO BE PAID-REPAIR, WITHIN WARRANTY PERIOD.
 1. THE BREAKDOWN, CAUSED BY DROP, IMPACT, INPUT OF OTHER MATERIAL.
 2. THE BREAKDOWN, CAUSED BY MODIFICATION OR REPAIR OF ANYONE OTHER THAN JMT.
 3. THE BREAKDOWN, CAUSED BY FIRE OR NATURAL DISASTER.
 4. THE BREAKDOWN, CAUSED BY ABNORMAL POWER SUPPLY.
 5. THE BREAKDOWN, CAUSED BY DAMAGE WHICH IS NOT MENTIONED AT WARRANTY CERTIFICATE.
 6. THE WEAR OF ACCESSORIES.

JUNG MYUNG TELECOM CO.,LTD.

5FL Silla-Technovil, 39-3, Dang-Dong, Koonpo-City, KOREA

TEL : +82-31-456-0661 FAX : +82-31-456-0677

E-mail : mp3119@jmtelcom.co.kr Homepage : www.mpiko.com

Certification Information

MP3 PLAYER Generates and uses radio frequency (RF) energy. If the equipment is not Installed and operated in strict accordance with the manufacturer's instructions, Interference to radio and television reception may result.

***Interference**

This equipment complies with Part 15 of the FCC Rules and its operation is Subject to the following conditions:

- (1) The equipment may not cause harmful interference.**
- (2) The equipment must accept any interference received, including that may cause Undesired operation.**

The FCC Rules, is designed to provide reasonable protection against radio and Television interference installation. Although the equipment has been tested and Found to comply with allowed RF emission limits, as specified in the above-cited Rules, There is no guarantee that interference will not occur in a particular situation. Interference can be determined by turning the equipment off and on while monitoring Radio or television reception. The user may be able to eliminate interference by Implementing one or more of the following measures:

Reorient the affected device.

Increase the distance between the affected device and computer equipment.

Plug the computer and its peripherals into a different branch circuit from that used by the affected device.