

Appendix F. Users Manual

Introduction

- A compact, light and portable storage device (external drive).
- Well-designed and integrated.
- New generation storage device.
- Save your favorite movie into Flash USB Drive.
- Flash USB Drive can save your data faster than any other media via USB port.
- The first portable storage device, manufactured by Korean Technology.
- No external power device, cable or complicated installation require.
- Protected from hacker's attacks. Provides safe storage of important file.
- By inserting the drive into the USB port, you can install immediately and easily use it like any other hard disk drive. Light enough to hang around the neck or insert in your pocket and you can take your favorite multi-media movie, music and big graphic file anywhere. For Windows 98 / Windows 98 SE / Windows ME / Windows 2000 / Mac.

Specification

PC system with USB ports	IBM PC / AT & Notebook & Sub-Notebook
Operating System	Windows 98, Windows SE, Windows ME, Windows 2000, Mac
Memory Capacity	16MB / 32MB / 64MB / 128MB / 256MB / 512MB / 1GB
Interface	USB Spec. 1.1 UHCI (Universal Host Controller Interface) OHCI (Open Host Controller Interface)
Data Retention	10 year
Suspend Current	<300uA, compliant to USB spec. of <500uA
Write Protection	By writing protection switch
Operating Current	<40mA
LED built-in (Green & Red)	LED Green: USB drive connected and enumerated LED Red: Data receiving or transmitting
Data Reading Speed	800Kbyte/sec (depending on PC system)
Data Writing Speed	500Kbyte/sec (depending on PC system)
Storage Temperature	-20°C ~ 80°C
Operating Temperature	0°C ~ 45°C
Relative Humidity under Storage	5% ~ 95%
Weight	15g (approx.)
Declaration	FCC, CE, EMI, EMS
Power Supply	USB bus-powered (4.5V ~ 5.5V)

All Contents Copyright 2000, JUNG MYUNG TELECOM CO., LTD.

Accessories

- Installation Mini-CD, Connecting cable(option), Quick guide, Neck strap.

Installing Flash USB Drive

1. Insert Flash USB Drive Mini-CD.
2. You select "Install.exe" in the CD software.
Then double-click the install.exe file.
3. Click next to proceed for installation.
4. Click finish when the install complete screen appears.
5. If the installation is completed, you can use Flash USB Drive.

"Flash USB Drive" Connection

1. Insert Flash USB Drive to USB port on your computer.
2. Look out "New hardware discover" message Windows in screen.
Then click enter.
3. Click next to proceed for USB Drive installation.
4. Click finish when the install when the installation was completed.
5. If the installation is completed, you can use "Flash USB Drive" drive.

Flash Manager Program



For using Flash Manager program, Please refer to below.

If you connect "Flash USB Drive" to your USB Port, Automatically complete Installation by the PnP function.

● Set up Password

- 1) If you want to set up password, Click "Password" button below screen.
- 2) After entering password, Please enter password again for reconfirmation.

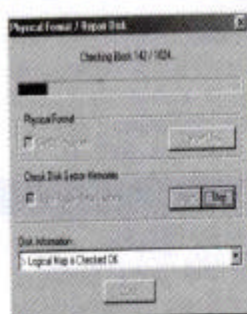


The password function of "Flash USB Drive" supports only cryptographic function system in the base of Windows O.S., the other special cryptographic Algorithms are not supported.

※ Please make sure not to forget your password ※

Appendix F. Users Manual

Format & Repair



● Format

This button is used when the "Flash USB Drive" should be formatted. In this case, all data in "Flash USB Drive" will be deleted.

● Check Disk Sector Memories

This button is used, in case that Bad sector was found in Flash Memory of "Flash USB Drive".



* WARNING

A small red & green blinking window on upper right corner represents that you are writing into the device, so do not pull out the device while it's blinking. If you pull out the device while it's blinking, it will form bad sector in the device itself so the data will be destroyed.

● Software upgrade

For upgrading your software, please visit our website <http://www.usbdrive.com> and download it.

It may happens to conflict with some software.

Then please send us E-mail(info@usbdrive.com) and get the technical support.



Trademark, Warranty & Certification Information

Trademarks

Flash USB Drive is a trademark of JUNG MYUNG TELECOM CO.,LTD. and J.M.TEK,LLC. All other trade names referenced in this manual are the service mark, trademark, or register trademarks of their respective manufacturers. JUNG MYUNG TELECOM CO.,LTD. and J.M.TEK,LLC. reserves the right to change specifications without any notice. Copyright © 2000 JUNG MYUNG TELECOM CO.,LTD. and J.M.TEK,LLC. printed in Korea.

J.M.TEK Flash USB Drive

Your Flash USB Drive comes with hardware warranty.

JUNG MYUNG TELECOM CO.,LTD. and J.M.TEK,LLC. warrants Flash USB Drive against defects in material and workmanship. This warranty applies only to the original purchase of the Flash USB Drive and is not transferable. This warranty does not cover any incompatibilities due to user's computer, hardware, software or any other related system configuration in which Flash USB Drive interfaces. Proof of purchase will be required before any warranty consideration by JUNG MYUNG TELECOM CO.,LTD. and J.M.TEK,LLC. This warranty does not apply to any failure or deficiency which has been caused by misuse, neglect, alteration, improper installation or handling, unauthorized repair or modification, improper testing, accident or causes external to the Flash USB Drive, such as, but not limited to, excessive heat or humidity, power failure or improper installation.

Appendix F. Users Manual

NOTICES TO USER

This device complies with Part 15 of the FCC Rules. Operation is subject to the following two conditions:

(1) this device may not cause harmful interference, and (2) this device must accept any interference received, including interference that may cause undesired operation.

One or more of the following statements may be applicable:

FCC WARNING

This equipment generates or uses radio frequency energy. Changes or modifications to this equipment may cause harmful interference unless the modifications are expressly approved in the instruction manual. The user could lose the authority to operate this equipment if an unauthorized change or modification is made.

INFORMATION TO THE USER

This equipment has been tested and found to comply with the limits for a Class B digital device, pursuant to Part 15 of the FCC Rules.

These limits are designed to provide reasonable protection against harmful interference in a residential installation.

This equipment generates, uses and can generate radio frequency energy and, if not installed and used in accordance with the instructions, may cause harmful interference to radio communications. However, there is no guarantee that the interference will not occur in a particular installation. If this equipment does cause harmful interference to radio or television reception, which can be determined by turning the equipment off and on, the user is encouraged to try to correct the interference by one or more of the following measures:

- Reorient or relocate the receiving antenna.
- Increase the separation between the equipment and receiver.
- Connect the equipment to an outlet on a circuit different from that to which the receiver is connected.
- Consult the dealer for technical assistance.

Appendix F. Users Manual
