



## **XETA4m-HP**

---

**Licensed Spectrum Wireless Data Transceiver**

406 to 512 MHz

---

Installation Guide

**Contents**

Xeta4m-HP Installation ..... 3

Figure 1. Xeta4m-HP Photo..... 3

**Figure 2. Botton View of Module..... 4**

## Xeta4m-HP Installation

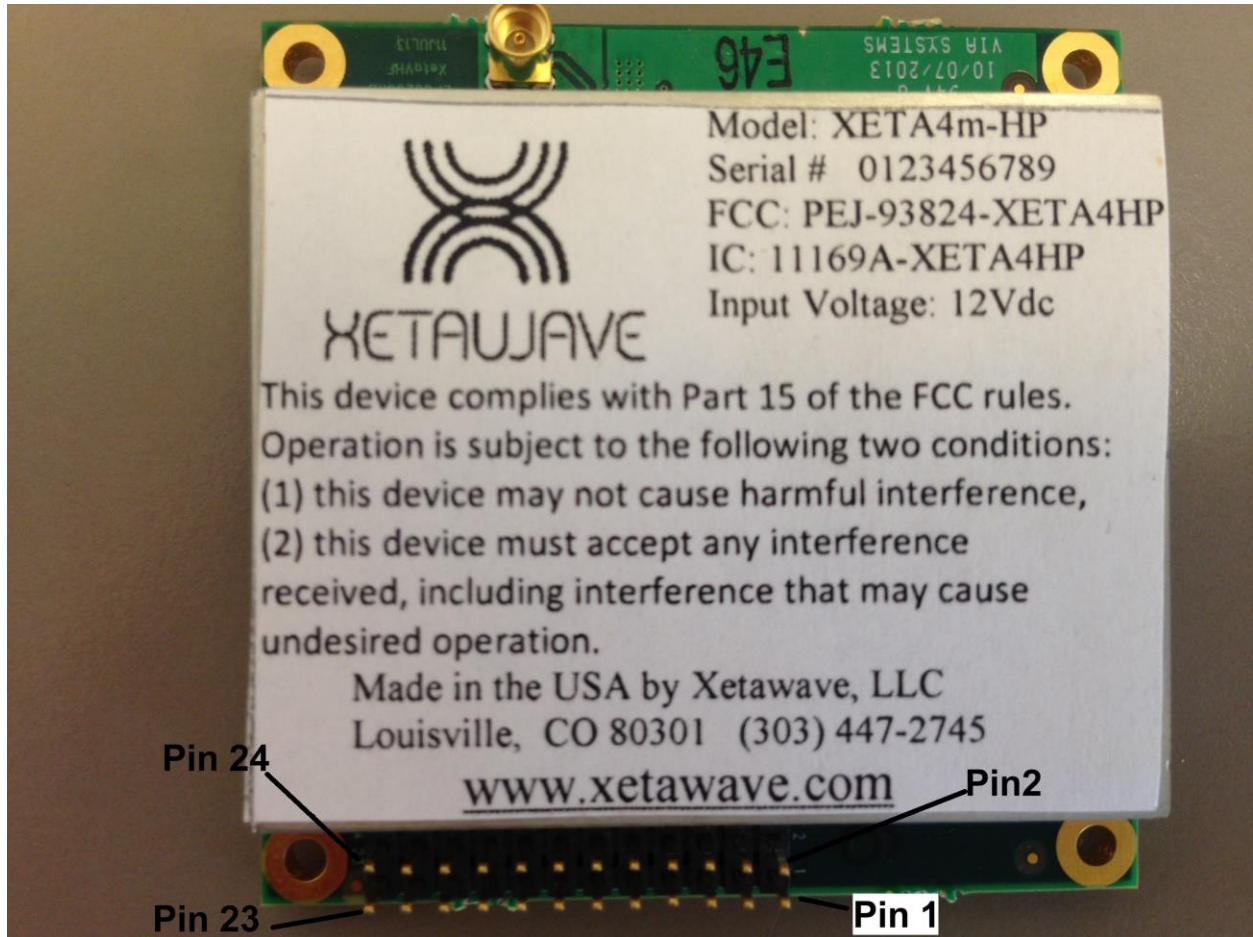
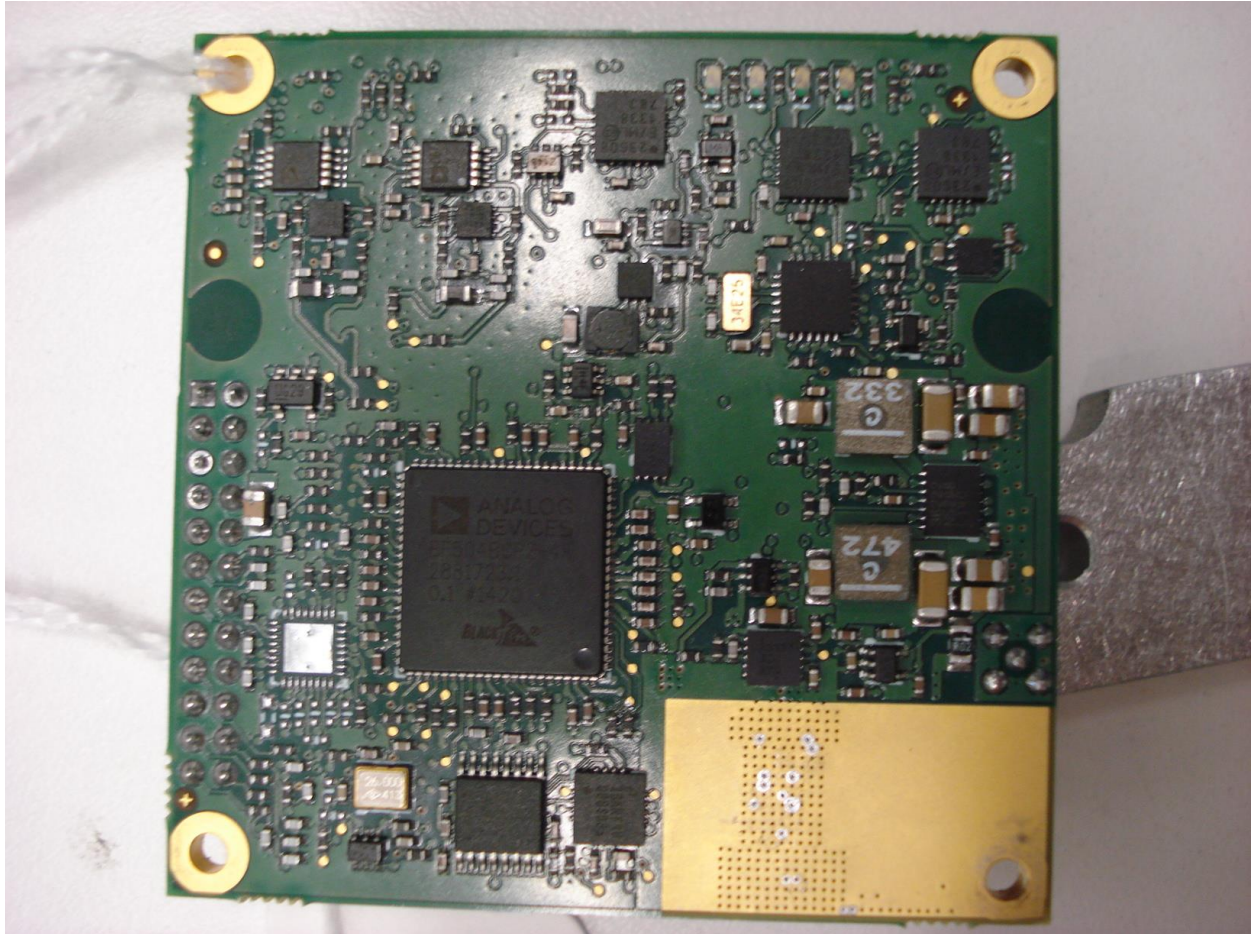


Figure 1. Xeta4m-HP Photo



**Figure 2. Bottom View of Module**

1. Plug the module into the 12 pin header socket
2. Connect RF cable
3. Power up the radio