

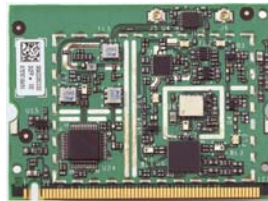


# Intel® PRO/Wireless 2100 LAN Mini-PCI Type 3B Adapter

## Product Description:

Embedded 2.4 GHz Wireless Local Area Network Mini-PCI adapter. The Mini-PCI Type 3B form factor is designed for notebook computer systems where overall thickness must be kept to an absolute minimum.

This overview is a representation of the final product, not the sample. See Beta Kit cover letter for current product functionality.



Type 3B Mini-PCI shown

## Key Features:

- 2.4 GHz support
- Up to 11 Mbps at 2.4 GHz
- IEEE 802.11b standard technology
- Advanced Security using LEAP, TKIP, 802.1x
- Adaptive Switching with VPN Control provides wired to wireless switching and WLAN roaming
- Bluetooth™ co-existence capability

Intel in  
Communications

## Technical Specifications

<b>Model Name</b>	Intel® PRO/Wireless 2100 LAN Mini-PCI Type 3B Adapter, (WM3B2100) Intel® PRO/Wireless 2100 LAN Mini-PCI Type 3A Adapter, (WM3A2100)
<b>Dimensions (H x W x D)</b>	Type 3B: 2.34 in x 1.75 in x 0.20 in (59.45 mm x 44.45 mm x 5 mm) Type 3A: 2.34 in x 2.0 in x 0.20 in (59.45 mm x 50.8 mm x 5 mm)
<b>Weight</b>	0.6 oz (17 g)
<b>Antenna Interface Connector</b>	Hirose U.FL-R-SMT mates with cable connector U.FL-LP-066
<b>Radio ON/OFF control</b>	Supported by both hardware and software
<b>Connector Interface</b>	124-pin SO-DIMM edge connector
<b>LEDs output</b>	Link, Activity
<b>Operating Temperature</b>	0 to +70° Celsius
<b>Humidity</b>	50 to 85% non-condensing
<b>Frequency Modulation</b>	2.4 GHz (802.11b)
<b>Frequency Band</b>	2.4 GHz to 2.497 GHz
<b>Modulation</b>	DBPSK, DQPSK, CCK
<b>Wireless Medium</b>	2.4GHz ISM: Direct Sequence Spread Spectrum (DSSS)
<b>Channels</b>	Full 14 Channel support
<b>Data Rates</b>	11, 5.5, 2, 1 Mbps
<b>Indoor Range</b>	100 ft (30 m) @ 11 Mbps / 300 ft (90 m) @ 1 Mbps
<b>Outdoor Range</b>	400 ft (120 m) @ 11 Mbps / 1500 ft (460 m) @ 1 Mbps
<b>Transmit Output Power</b>	16dBm (typical)
<b>Adapter Power Consumption</b>	
<b>Transmit</b>	1.6 W
<b>Receive</b>	1.0 W
<b>Idle</b>	135 mW
<b>Sleep</b>	45 mW
<b>Voltage</b>	3.3 V

Intel® PRO  
Network Connections

## Technical Specifications continued

<b>Operating System</b>	Windows® XP, 2000, Me, 98SE, Windows® NT4.0*, and Linux*
<b>WECA</b>	WiFi certification for 802.11b
<b>WHQL</b>	YES
<b>WLAN Standard</b>	IEEE 802.11b
<b>Architecture</b>	Infrastructure or ad hoc (peer-to-peer)
<b>Security</b>	LEAP, SSN**, TKIP, 802.1x, EAP-TLS, 128-bit and 64-bit WEP, Tgi**, AES**, CKIP**
<b>Product Safety</b>	UL, C-UL, CB (IEC 60590)
<b>Compliance</b>	Single SKU for all major countries

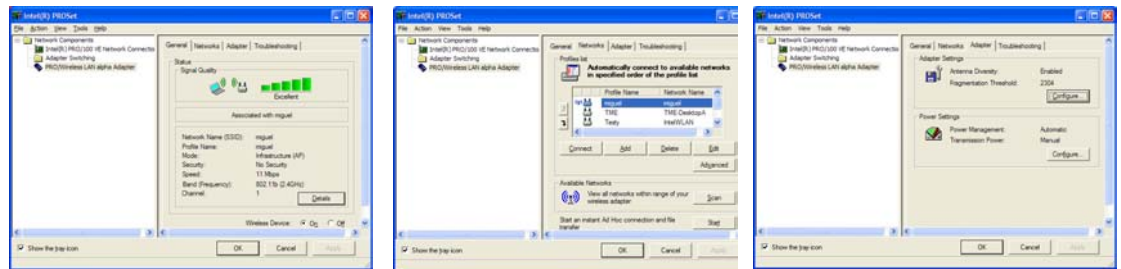
\*\* Post FCS implementation

Products Available	Product Code
Intel® PRO/Wireless 2100 LAN Mini-PCI Type 3B Adapter (.11b only)	WM3B2100
Intel® PRO/Wireless 2100 LAN Mini-PCI Type 3A Adapter (.11b only)	WM3A2100
Intel® PRO/Wireless 7100 LAN Mini-PCI Type 3B Adapter (Dual Band)	WM3B7100
Intel® PRO/Wireless 7100 LAN Mini-PCI Type 3A Adapter (Dual Band)	WM3A7100

## Intel® PROSet Software

Provides driver consistency among desktops, notebooks and servers in one simple common user interface. PROSet delivers the best mobile experience including the following highlights.

- **Intel Quick Access Manager.** Automatic discovery and configuration of WEP, IP, and VPN settings when roaming
- **Intel Adapter Switching.** Automatic reconnect when changing media
- **Intel Instant Ad hoc Connection.** Single pass phrase to establish an Ad hoc network; automatically changes required network settings



### Connection Status

- Signal Strength
- Network Name
- Security
- Radio On/Off

### Network Management

- Quick Access Manager
  - Network Name
  - Security Settings
  - Network Discovery
  - VPN Management
  - Unlimited, shareable location profiles
  - Infrastructure and Ad hoc mode configuration

### NIC Management

- Power Settings
- International Mode
- Antenna Diversity

\*Other names and brands may be claimed as the property of others

**Intel Confidential** - The information contained herein is preliminary and subject to change without notice.

Information in this document is provided in connection with Intel products. No license, express or implied, by estoppel or otherwise, to any intellectual property rights is granted by this document. Except as provided in Intel's Terms and Conditions of Sale for such products, Intel assumes no liability whatsoever, and Intel disclaims any express or implied warranty, relating to sale and/or use of Intel products including liability or warranties relating to fitness for a particular purpose, merchantability, or infringement of any patent, copyright or other intellectual property right. Intel products are not intended for use in medical, life saving, or life sustaining applications. Intel may make changes to specifications and product descriptions at any time, without notice. For the most current product information, please visit: <http://www.intel.com/network>

Copyright © Intel Corporation, 2002. All rights reserved.

092602v2