

Regulatory WLAN Antenna Information

(English Language Required for Intel Regulatory Review / Approval)

OEM Vendor: Sony
Platform: ATX-6063
Antenna Vendor: ASUStek, SmartANT, Aliner

Antenna Sample / Antenna Data Requirements for worldwide regulatory approval

| Section | Description of Required OEM / ODM Antenna Information | US / IC | EU | Japan | Taiwan | Korea |
|---------|--|----------|----------|----------|----------|----------|
| 1A | Part Number for Antenna only | Required | Required | Required | Required | Required |
| 1B | Antenna Manufacturer Name | Required | Required | Required | Required | Required |
| 1C | Description of Antenna Type | Required | N/A | N/A | N/A | N/A |
| 1D | Part number of Antenna Assembly / cable impedance, length & diameter. | Required | Desired | Desired | Desired | Desired |
| 1E | Main & Aux antenna (Peak Gain W/ cable loss) | Required | Required | Required | Required | Required |
| | 1E OR 1F, 1G, 1H | | | | | |
| 1F | Main & Aux antenna (Peak Gain only) | Required | Required | Required | Required | Required |
| 1G | VSWR of cable including connector | Required | Required | Required | Required | Required |
| 1H | Main & Aux antenna (Cable loss W/ connector) | Required | Required | Required | Required | Required |
| 2 | Dimensioned Photographs or Drawings of main & auxiliary antennas | Required | Required | Required | Required | Required |
| 3 | Radiation patterns of antennas loaded in the host platform. | Required | Desired | Required | N/A | Required |
| 4 | Platform model name / number - correlated to antenna manufacturer and antenna part number | Required | Required | Desired | Required | Desired |
| 5 | Photograph(s) or Drawings showing location of antennas in platform. | Required | Required | Desired | Required | Desired |
| 6 | Mech. drawings / photos with dimensions of antenna locations and distance from end-user (For evaluation of SAR testing requirement). | Required | N/A | N/A | N/A | N/A |
| 7 | Photograph(s) or Drawings showing the location of all antennas (WLAN, BT, other) and distance between those transmitting antennas. Information will be used to evaluate whether co-location testing is required. | Required | N/A | N/A | N/A | N/A |

Antenna Information

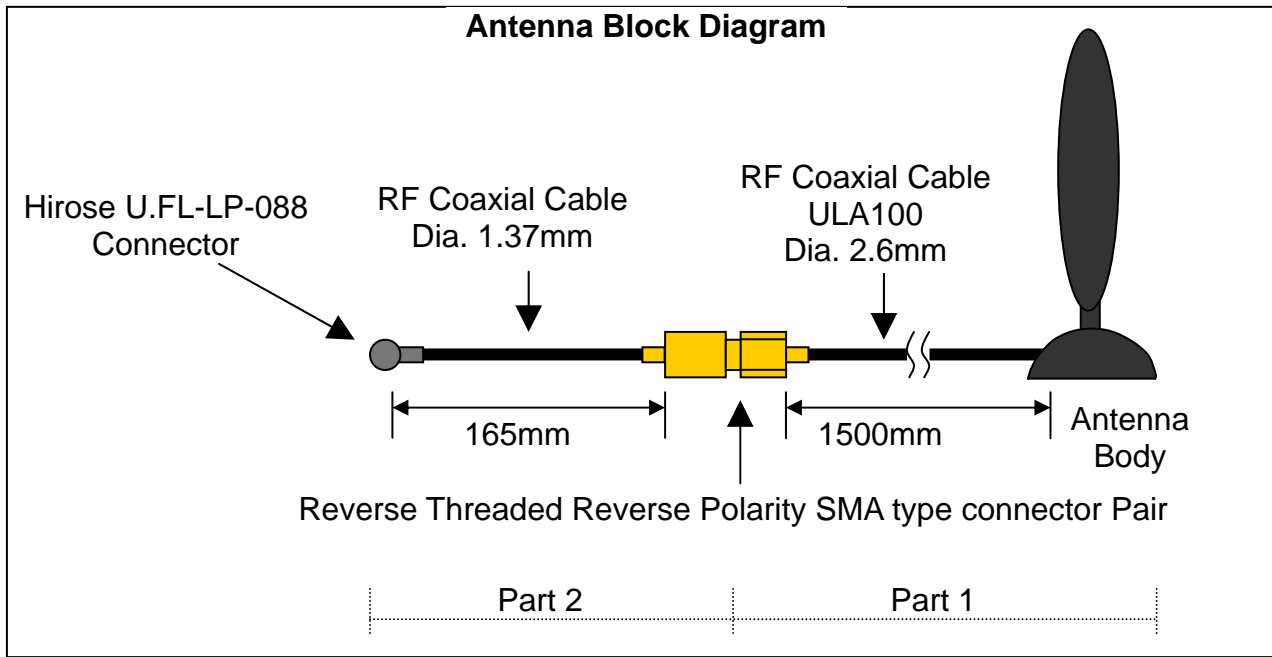
Section 1. Antenna Assembly Specifications

Antenna Assembly Summary:

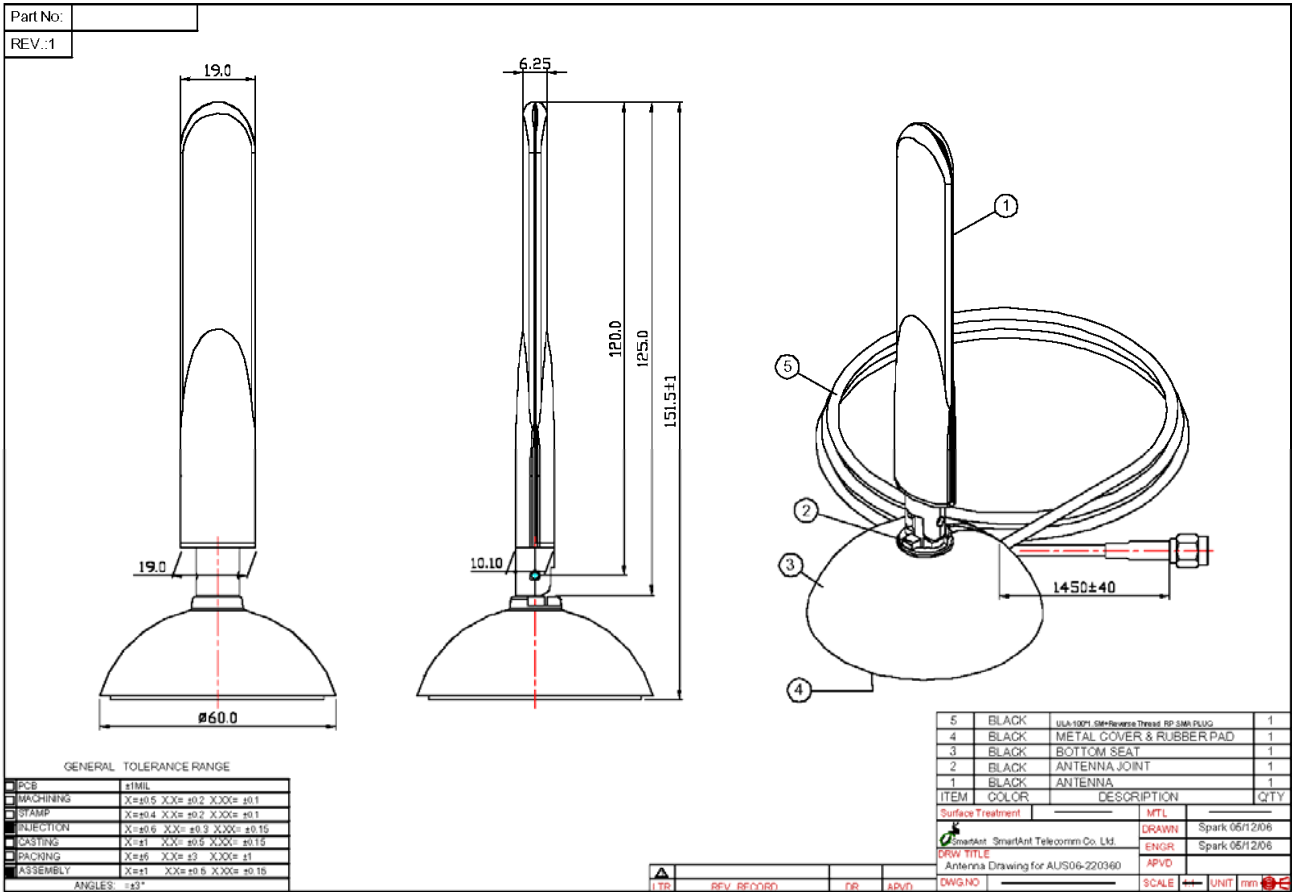
| 1A Antenna Part Number | 1B Manufacturer | 1C Antenna Type | 1D Cable Assembly Part Number and Information | 1E Peak Gain W/ Cable loss (dBi) | 1F Peak Gain w/o Cable Loss (dBi) | 1G VSWR | 1H Cable Loss (dBi) |
|--|--------------------------------------|--------------------|--|-------------------------------------|--------------------------------------|-------------------------|--------------------------------|
| 14G151039000SY (AUS06-220360) + CA20420137000 1658 | SmartAnt (ASUStek) + Aliner | Dipole | 50 ohm Coaxial. Length: 1.5 m Diameter: 2.6 mm Connector: Reverse Thread SMA PLUG | 2400-2500MHz 1.1 dBi (peak) | 2400-2500MHz 3.4 dBi (peak) | 2400-2500MHz 1.6 max | 2400-2500MHz 2.3 dBi (peak) |
| | | | | 5150-5350MHz 2.2 dBi (peak) | 5150-5350MHz 5.9 dBi (peak) | 5150-5350MHz 1.6 max | 5150-5350MHz 3.7 dBi (peak) |
| | | | | 5470-5725MHz 2.3 dBi (peak) | 5470-5725MHz 6.0 dBi (peak) | 5470-5725MHz 1.7 max | 5470-5725MHz 3.7 dBi (peak) |
| | | | | 5725-5850MHz 1.9 dBi (peak) | 5725-5850MHz 5.7 dBi (peak) | 5725-5850MHz 1.6 max | 5725-5850MHz 3.8 dBi (peak) |

Section 2. Dimensioned Photos or Drawings of Antennas

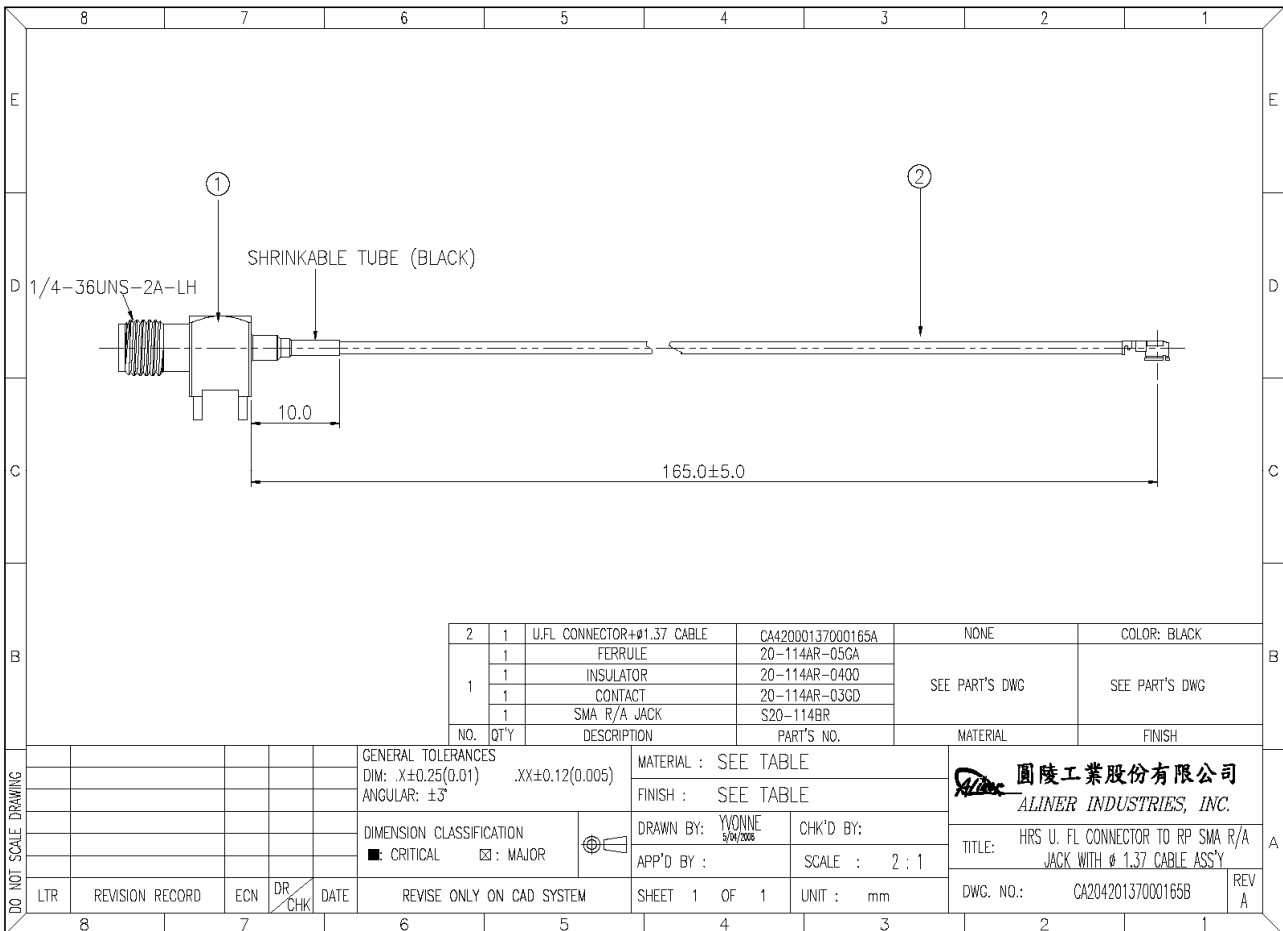
Include a dimensioned photo or dimensioned drawing of antenna here.



Part 1



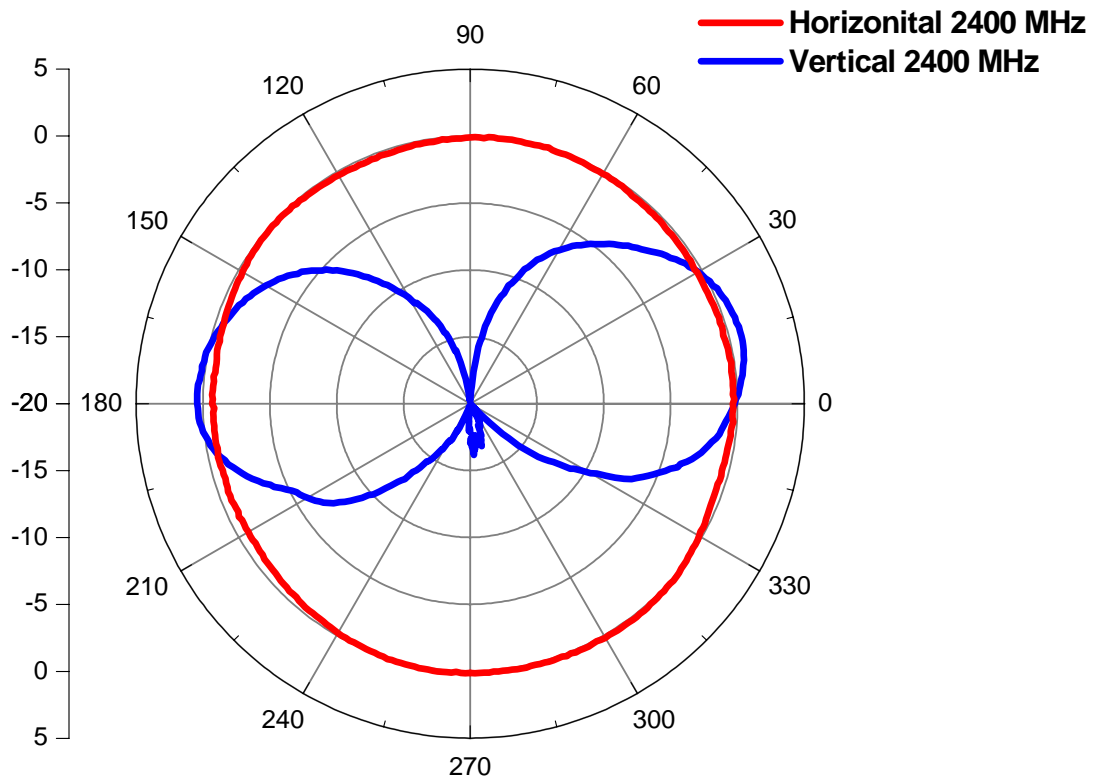
Part 2



Section 3. Radiation characteristics of antennae Loaded in Host Platform

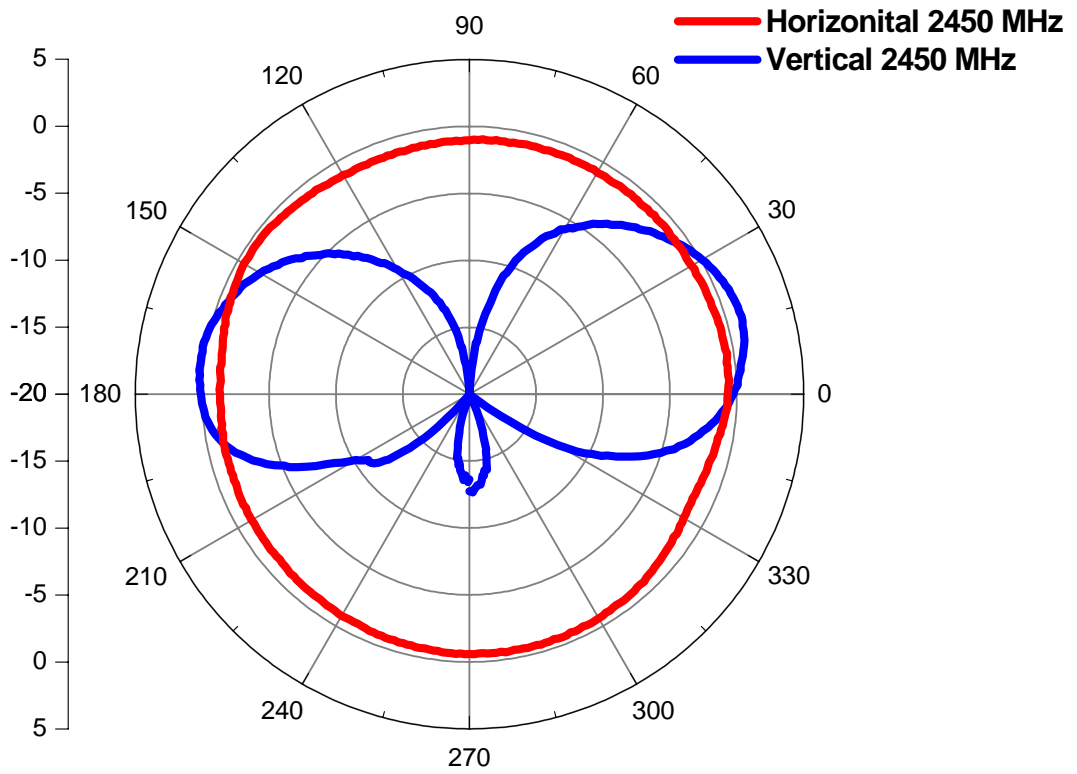
2400-2500MHz radiation characteristic

Antenna: 2400 MHz



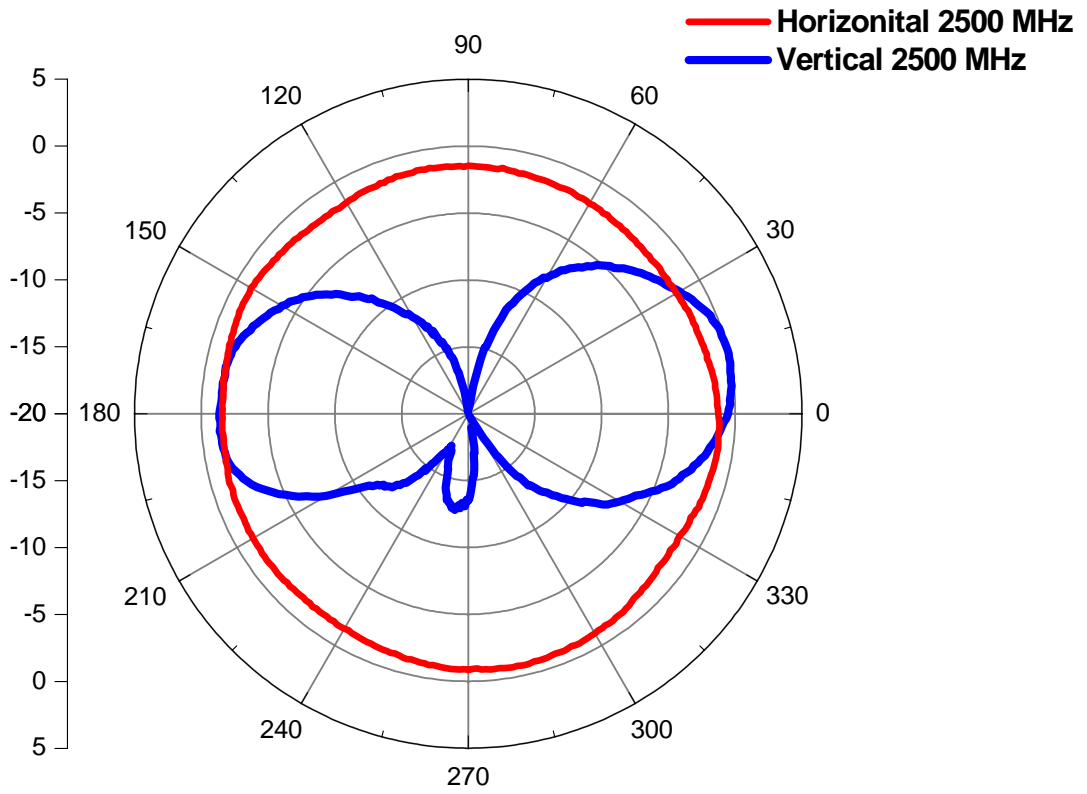
| | |
|-----------------------|-----------------|
| Center Frequency | 2400 MHz |
| Horizontal (dBi) Peak | 0.3 dBi |
| Horizontal (dBi) AVG. | -0.3 dBi |
| Vertical (dBi) Peak | 0.9 dBi |

Antenna: 2450 MHz



| | |
|-----------------------|-----------------|
| Center Frequency | 2450 MHz |
| Horizontal (dBi) Peak | -0.5 dBi |
| Horizontal (dBi) AVG. | -0.9 dBi |
| Vertical (dBi) Peak | 1.1 dBi |

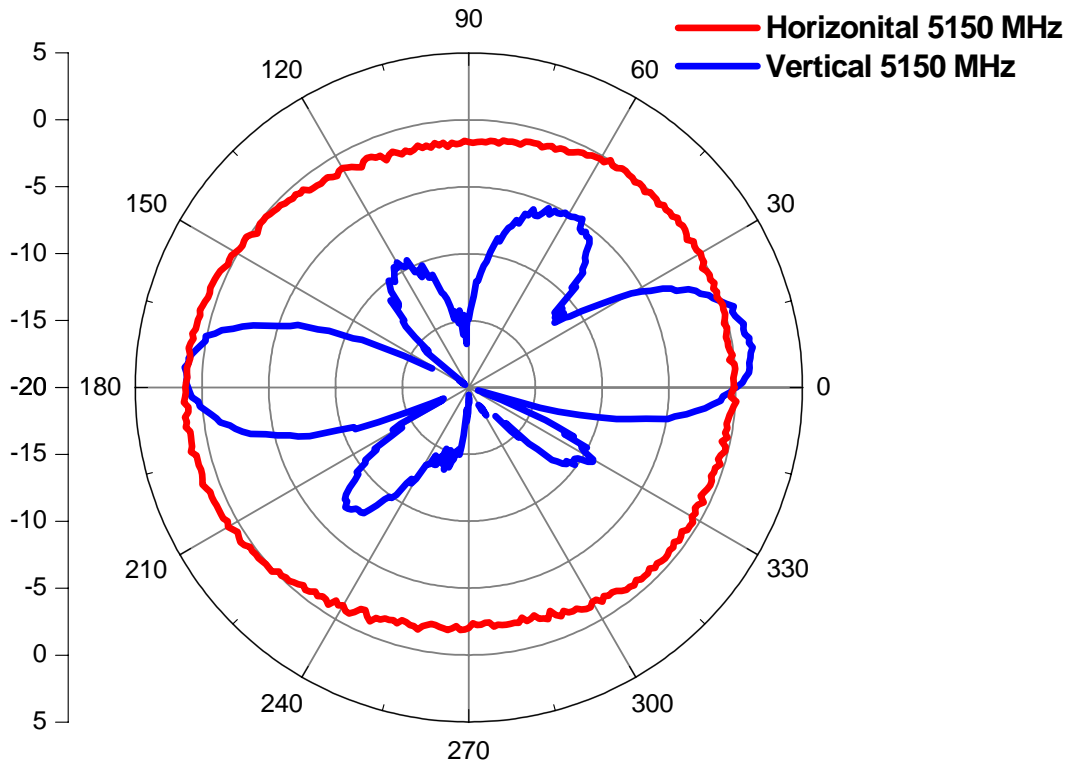
Antenna: 2500 MHz



| | |
|-----------------------|-----------------|
| Center Frequency | 2500 MHz |
| Horizontal (dBi) Peak | -0.7 dBi |
| Horizontal (dBi) AVG. | -1.4 dBi |
| Vertical (dBi) Peak | 0 dBi |

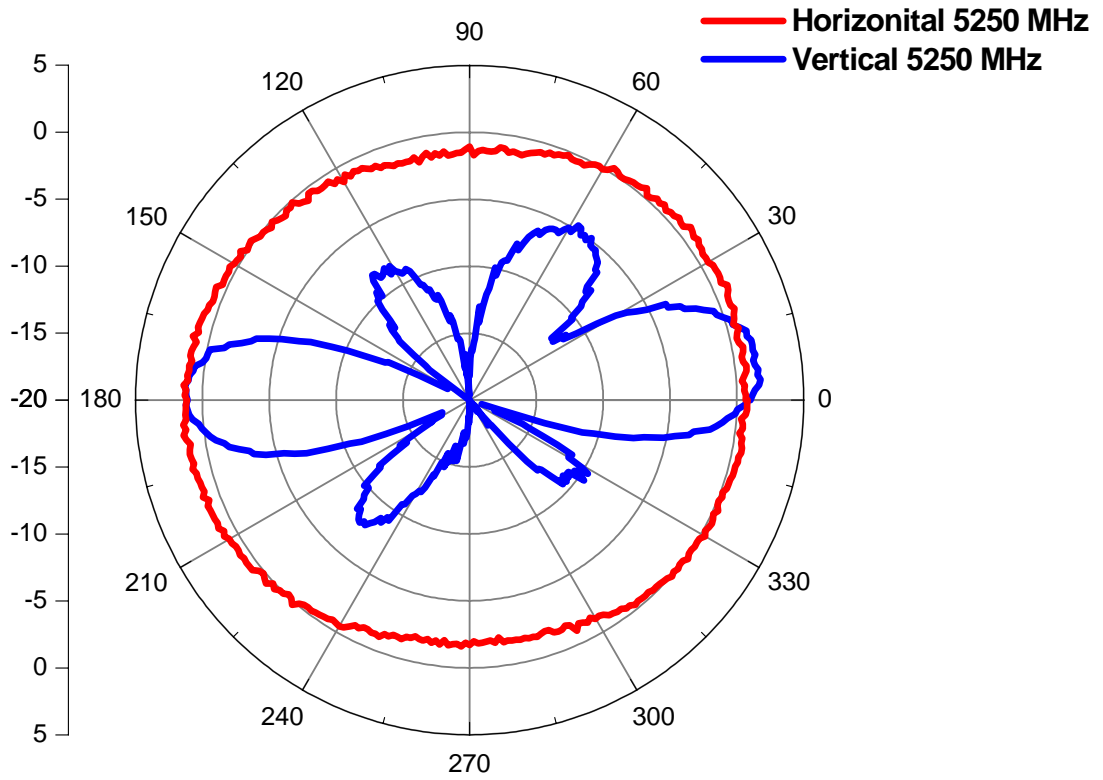
5150-5350 MHz radiation characteristic

Antenna: 5150 MHz



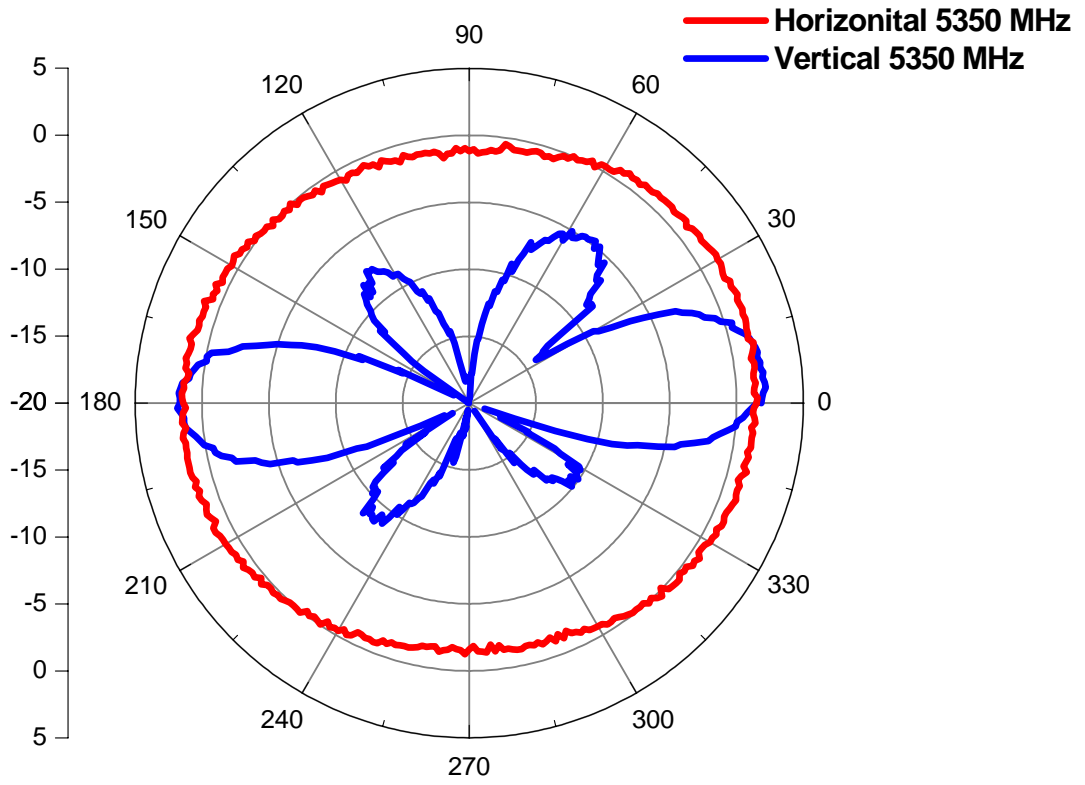
| | |
|-----------------------|-----------------|
| Center Frequency | 5150 MHz |
| Horizontal (dBi) Peak | 1.5 dBi |
| Horizontal (dBi) AVG. | -0.5 dBi |
| Vertical (dBi) Peak | 1.5 dBi |

Antenna: 5250 MHz



| | |
|-----------------------|-----------------|
| Center Frequency | 5250 MHz |
| Horizontal (dBi) Peak | 1.6 dBi |
| Horizontal (dBi) AVG. | 0 dBi |
| Vertical (dBi) Peak | 1.8 dBi |

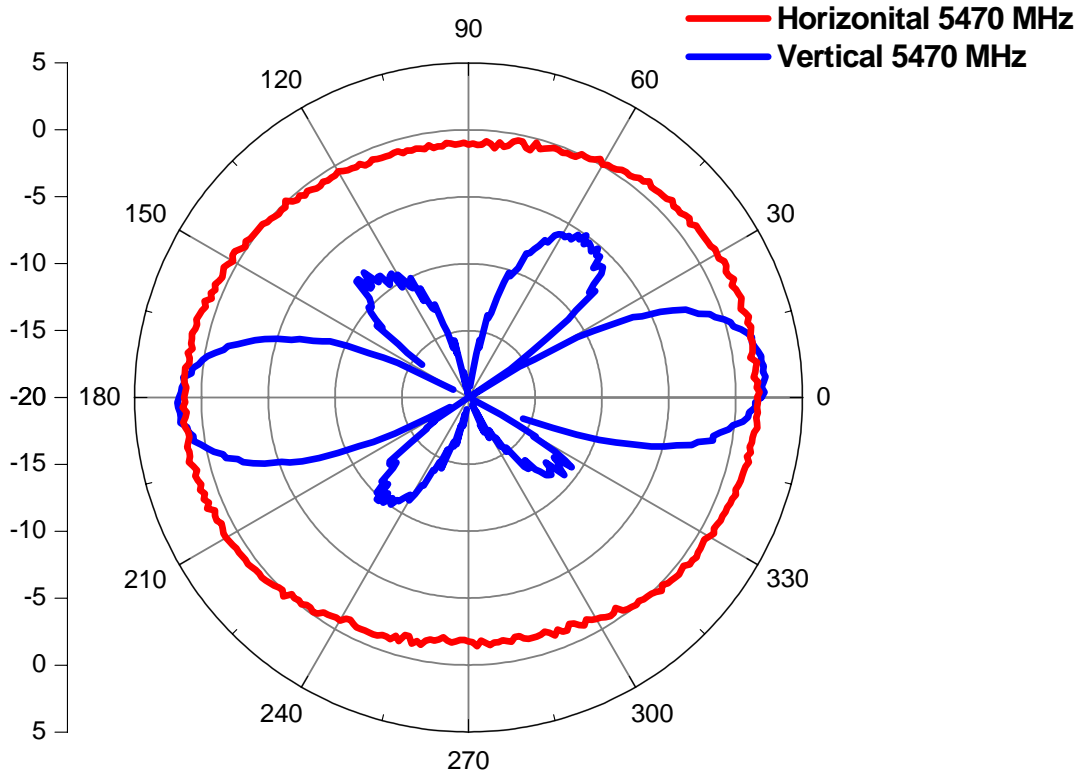
Antenna: 5350 MHz



| | |
|-----------------------|-----------------|
| Center Frequency | 5350 MHz |
| Horizontal (dBi) Peak | 1.7 dBi |
| Horizontal (dBi) AVG. | 0.3 dBi |
| Vertical (dBi) Peak | 2.2 dBi |

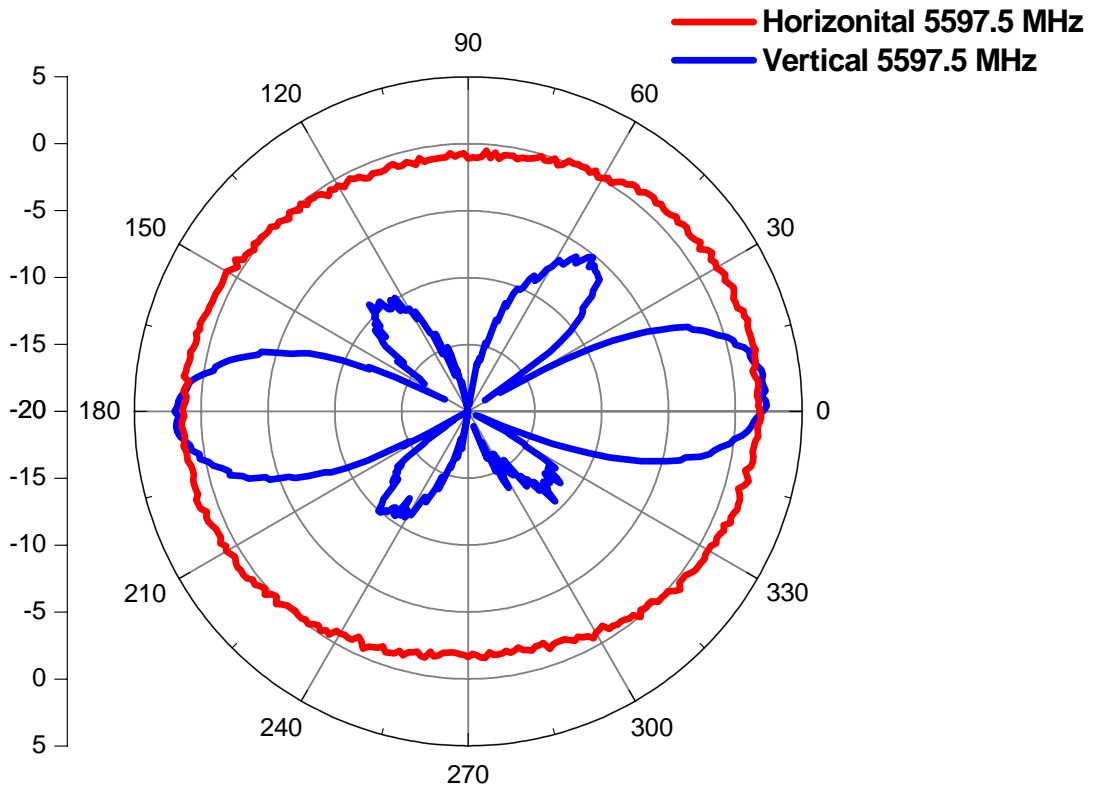
5470-5725MHz radiation characteristic

Antenna: 5470 MHz



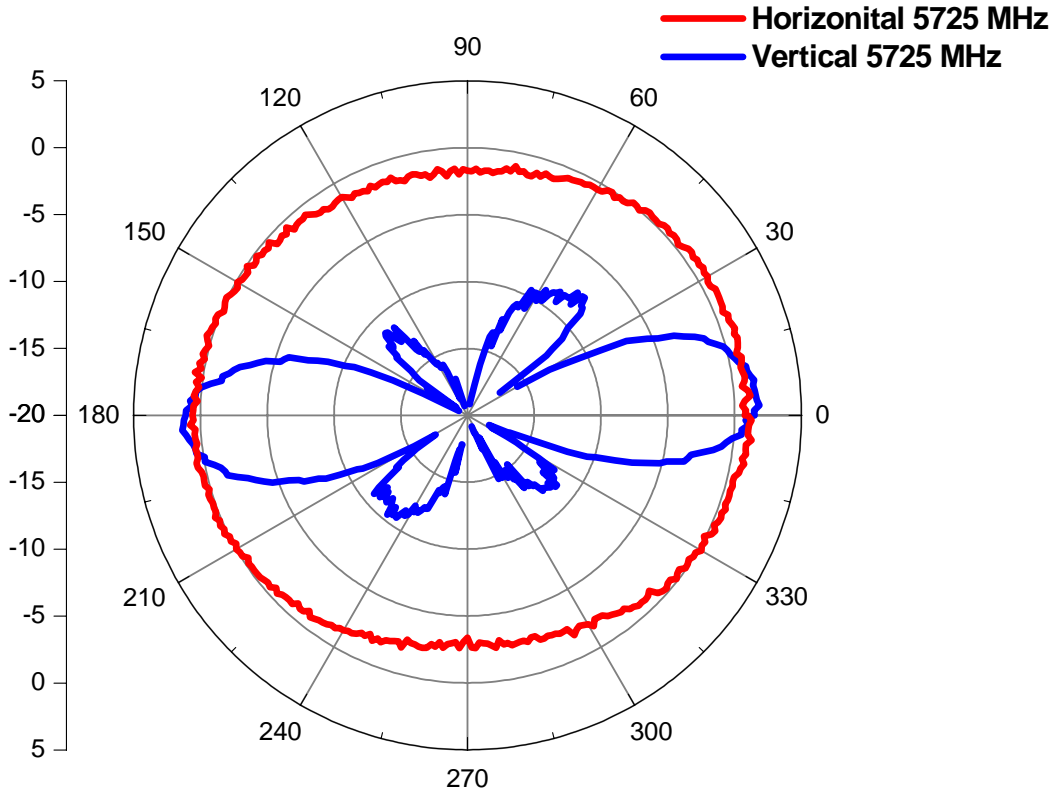
| | |
|-----------------------|-----------------|
| Center Frequency | 5470 MHz |
| Horizontal (dBi) Peak | 1.8 dBi |
| Horizontal (dBi) AVG. | 0.3 dBi |
| Vertical (dBi) Peak | 2.3 dBi |

Antenna: 5597.5 MHz



| | |
|-----------------------|-------------------|
| Center Frequency | 5597.5 MHz |
| Horizontal (dBi) Peak | 2.1 dBi |
| Horizontal (dBi) AVG. | 0.4 dBi |
| Vertical (dBi) Peak | 2.3 dBi |

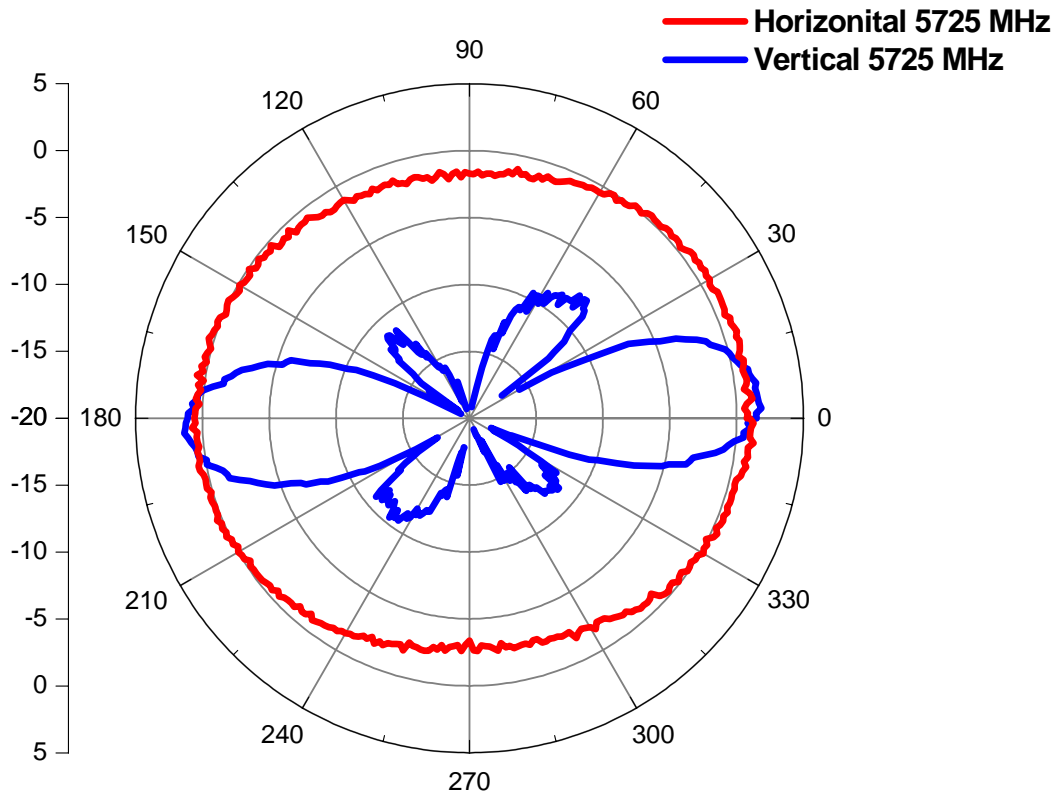
Antenna: 5725 MHz



| | |
|-----------------------|-----------------|
| Center Frequency | 5725 MHz |
| Horizontal (dBi) Peak | 1.4 dBi |
| Horizontal (dBi) AVG. | -0.5 dBi |
| Vertical (dBi) Peak | 1.9 dBi |

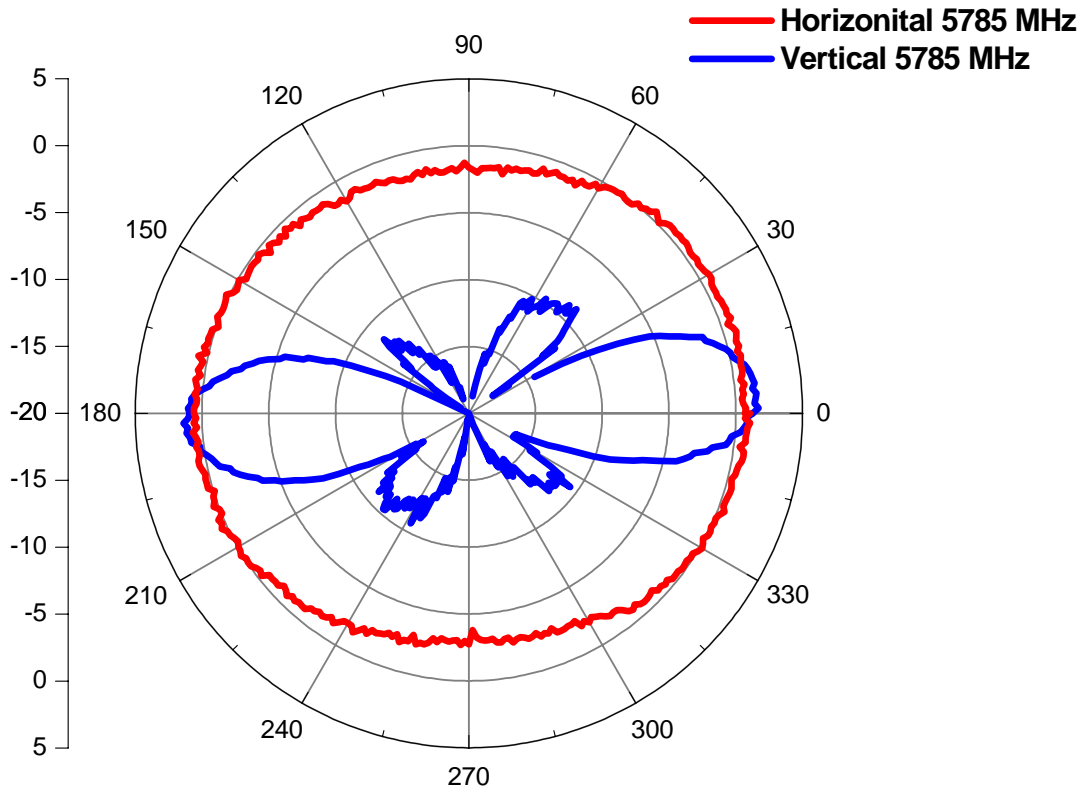
5725-5850 MHz radiation characteristic

Antenna: 5725 MHz



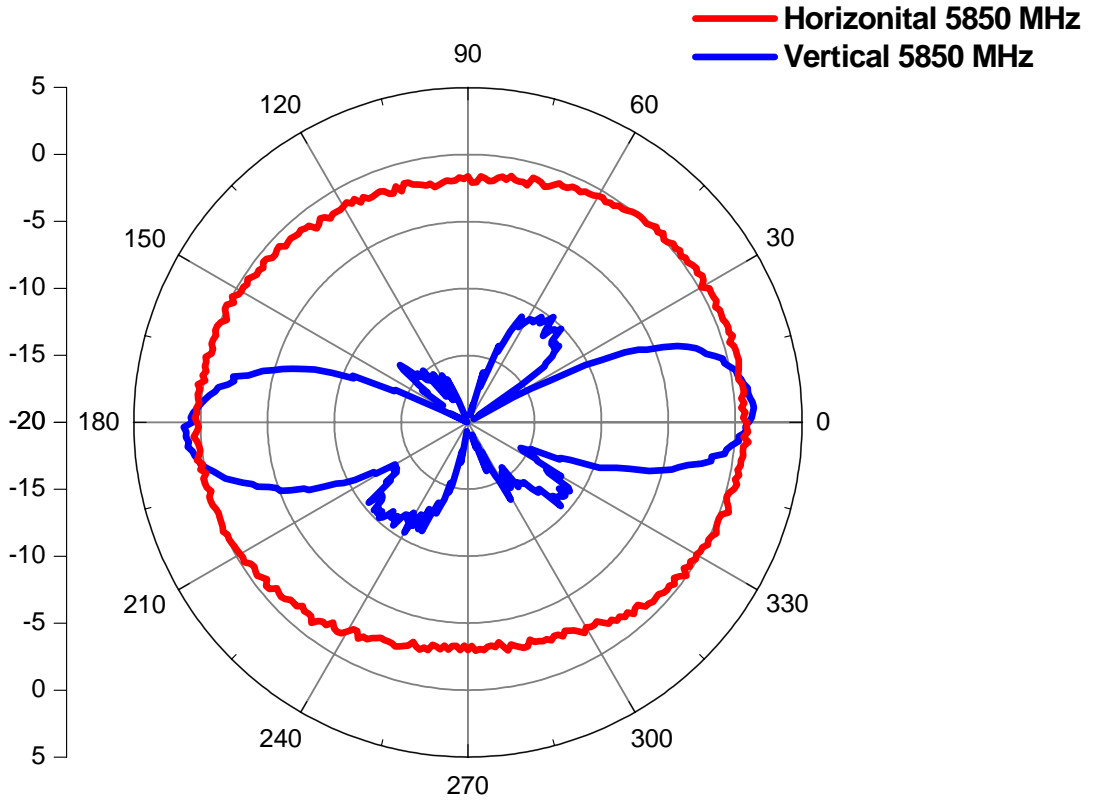
| | |
|-----------------------|-----------------|
| Center Frequency | 5725 MHz |
| Horizontal (dBi) Peak | 1.4 dBi |
| Horizontal (dBi) AVG. | -0.5 dBi |
| Vertical (dBi) Peak | 1.9 dBi |

Antenna: 5785 MHz



| | |
|-----------------------|-----------------|
| Center Frequency | 5785 MHz |
| Horizontal (dBi) Peak | 1.1 dBi |
| Horizontal (dBi) AVG. | -0.6 dBi |
| Vertical (dBi) Peak | 1.7 dBi |

Antenna: 5850 MHz



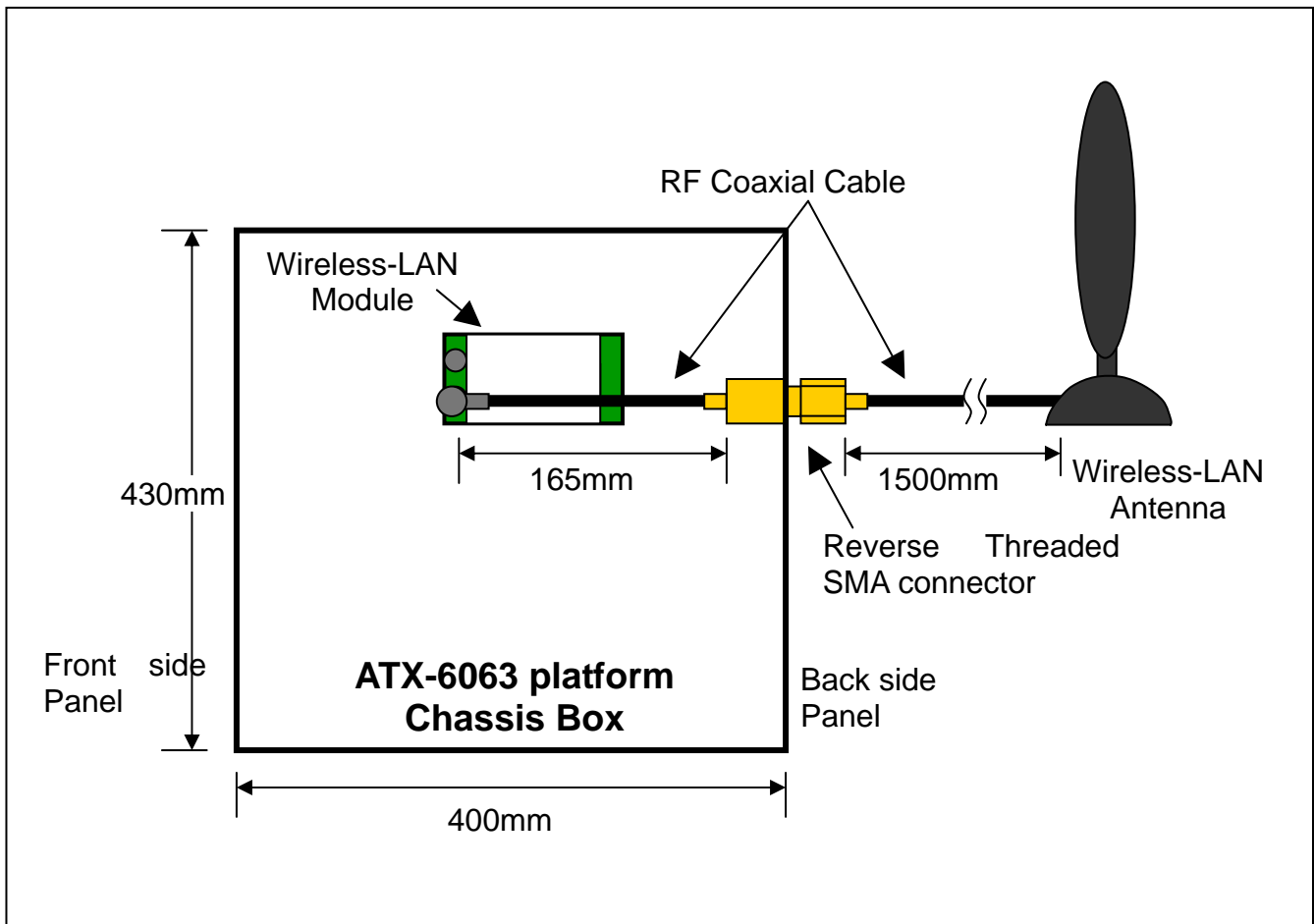
| | |
|-----------------------|-----------------|
| Center Frequency | 5850 MHz |
| Horizontal (dBi) Peak | 1.1 dBi |
| Horizontal (dBi) AVG. | -0.7 dBi |
| Vertical (dBi) Peak | 1.4 dBi |

Section 4. Host Platform Information

OEM / ODM Host platform: ATX-6063 platform doesn't correlate to antenna data, because the antenna is arranged externally.

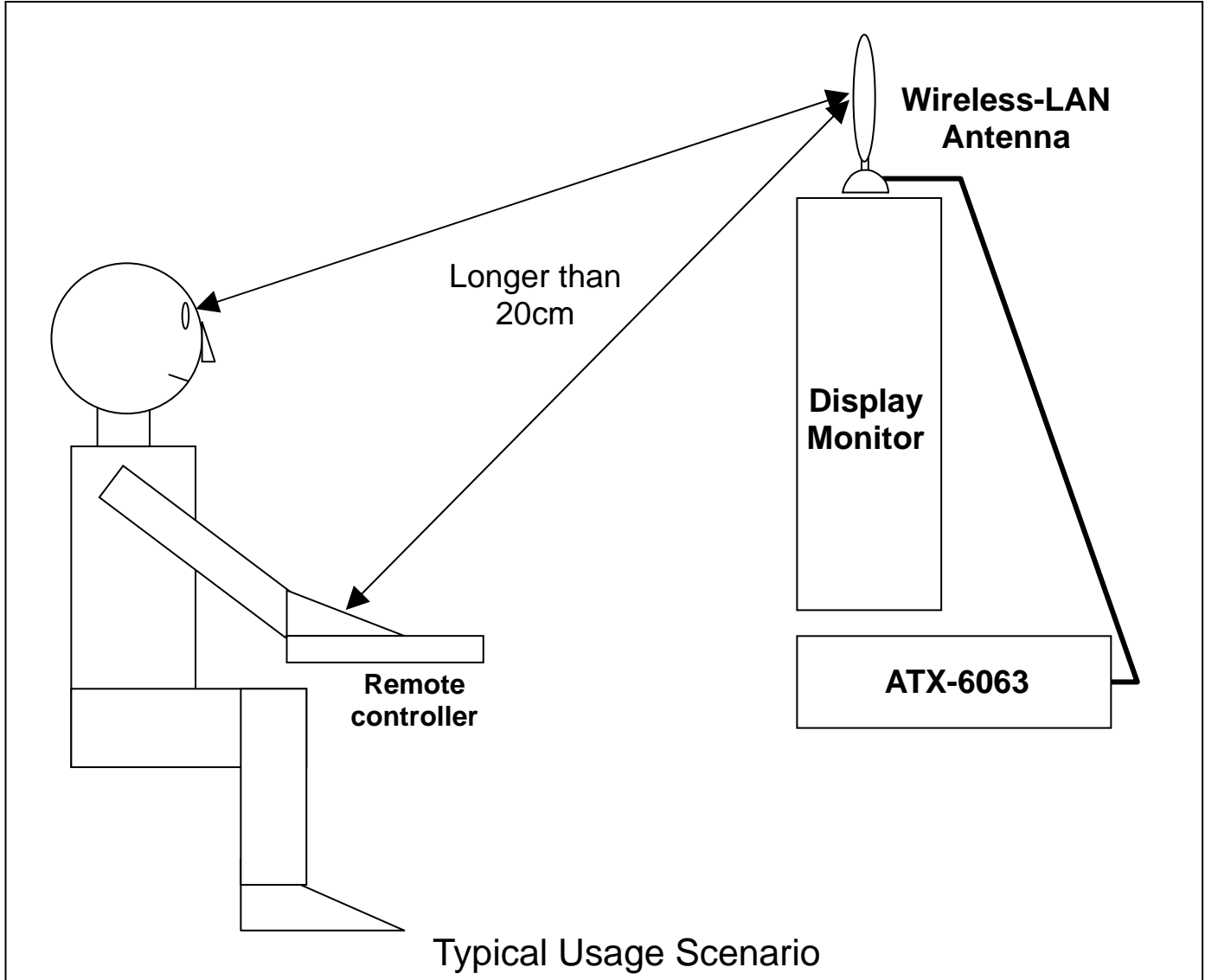
Section 5. Antenna Host Platform Location Information

Include a dimensioned photos or dimensioned drawings of main and auxiliary antenna placements.



Section 6. Antenna dimensional information for SAR evaluation

Include a dimensioned photos or dimensioned drawings showing the distance (mm) between the transmit (main) antenna and the user (excluding hands, wrist, feet, and ankle)



Section 7. Diagram Example of Co-Location Antenna Separation

Indicate distance between WLAN module antennas and Bluetooth/other radio antenna element.

(Note: Due to the evolving rules regarding co-location, each platform will need to be reviewed on a case by case basis)

