



# SAR Evaluation Report

IN ACCORDANCE WITH THE REQUIREMENTS OF  
FCC OET BULLETIN 65 SUPPLEMENT C

FOR

EXPRESS MINI-PCI USB WIRELESS CDMA MODEM MODULE

Model: MC5720

FCC ID: N7N-MC5720

REPORT NUMBER: 06U10632-4B

ISSUE DATE: OCTOBER 20, 2006

*Prepared for*

SIERRA WIRELESS  
2290 COSMOS CT  
CARLSBAD CA 92009  
UNITED STATES

*Prepared by*

COMPLIANCE CERTIFICATION SERVICES  
561F MONTEREY ROAD,  
MORGAN HILL, CA 95037, USA  
TEL: (408) 463-0885

**NVLAP<sup>®</sup>**  
LAB CODE:200065-0

**Revision History**

Rev.	Issued date	Revisions	Revised By
--	October 12, 2006	Initial issue	HS
B	October 20, 2006	<ol style="list-style-type: none"><li>1. Additional SAR data for PRIMARY PORTRAIT configuration and removed the data related to collocations.</li><li>2. Updated system performance check plots due to additional SAR test.</li><li>3. Updated SAR test plots and removed the plots related to collocations.</li></ol>	HS

**CERTIFICATE OF COMPLIANCE (SAR EVALUATION)**

**DATES OF TEST:** October 10, 11 and 18 -19, 2006

APPLICANT: ADDRESS:	SIERRA WIRELESS 2290 COSMOS CT CARLSBAD CA 92009, UNITED STATES
FCC ID: MODEL:	N7N-MC5720 MC5720
DEVICE CATEGORY: EXPOSURE CATEGORY:	Portable Device General Population/Uncontrolled Exposure

Express MINI-PCI USB Wireless CDMA Modem Module is installed in Lenovo ThinkPad X60 Tablet.

Test Sample is a:	Production unit		
Host Laptops:	Lenovo ThinkPad X60 Tablet		
Rule Parts	Frequency Range [MHz]	The Highest SAR Values [1g_mW/g]	Collocation SAR Values [1g_mW/g]
22H	824.7 – 848.31	0.183	0.183
24E	1851.25 – 1908.75	0.436	0.436

This wireless portable device has been shown to be capable of compliance for localized specific absorption rate (SAR) for General Population/Uncontrolled Exposure limits specified in ANSI/IEEE Std. C95.1-1992 and had been tested in accordance with the measurement procedures specified in FCC OET 65 Supplement C (Edition 01-01).

Note: The results documented in this report apply only to the tested sample, under the conditions and modes of operation as described herein. This document may not be altered or revised in any way unless done so by Compliance Certification Services and all revisions are duly noted in the revisions section. Any alteration of this document not carried out by Compliance Certification Services will constitute fraud and shall nullify the document. No part of this report may be used to claim product certification, approval, or endorsement by NVLAP, NIST, or any government agency.

Approved & Released For CCS By:

Tested By:




Hsin Fu Shih  
Senior Engineer  
Compliance Certification Services

Ninous Davoudi  
EMC Engineer  
Compliance Certification Services

TABLE OF CONTENTS

1	EQUIPMENT UNDER TEST (EUT) DESCRIPTION.....	5
2	FACILITIES AND ACCREDITATION .....	6
3	SYSTEM DESCRIPTION .....	7
3.1	COMPOSITION OF INGREDIENTS FOR TISSUE SIMULATING LIQUIDS .....	8
4	SIMULATING LIQUID PARAMETERS CHECK.....	9
4.1	SIMULATING LIQUID PARAMETER CHECK RESULT.....	10
5	SYSTEM PERFORMANCE CHECK .....	14
5.1	SYSTEM PERFORMANCE CHECK RESULTS.....	15
6	SAR MEASUREMENT PROCEDURE .....	16
6.1	DASY4 SAR MEASUREMENT PROCEDURE .....	17
7	PROCEDURE USED TO ESTABLISH TEST SIGNAL .....	18
8	SAR MEASUREMENT RESULTS.....	19
8.1	CELL BAND .....	21
8.1.1	EDGE POSITION – PRIMARY PORTRAIT .....	21
8.1.2	EDGE POSITION – SECONDARY PORTRAIT .....	22
8.1.3	LAP HELD POSITION.....	23
8.2	PCS BAND.....	24
8.2.1	EDGE POSITION – PRIMARY PORTRAIT .....	24
8.2.2	EDGE POSITION – SECONDARY PORTRAIT .....	25
8.2.3	LAP HELD POSITION.....	26
9	MEASUREMENT UNCERTAINTY .....	27
9.1	MEASUREMENT UNCERTAINTY FOR 300 MHZ – 3000 MHZ .....	27
10	EQUIPMENT LIST AND CALIBRATION.....	28
11	PHOTOS .....	29
12	ATTACHMENTS.....	33

**1 EQUIPMENT UNDER TEST (EUT) DESCRIPTION**

Express MINI-PCI USB Wireless CDMA Modem Module is installed in Lenovo ThinkPad X60 Tablet.	
Normal operation:	Lap-held position, and underarm position
Accessory:	N/A
Earphone/Headset Jack:	N/A
Duty cycle:	100%
Host Device(s):	Lenovo ThinkPad X60 Tablet
Antenna(s)	Wistron Neweb Corp. PIFA Antenna, P/N: 60.4Q423.001
Power supply:	Power supplied through the laptop computer (host device).

## 2 FACILITIES AND ACCREDITATION

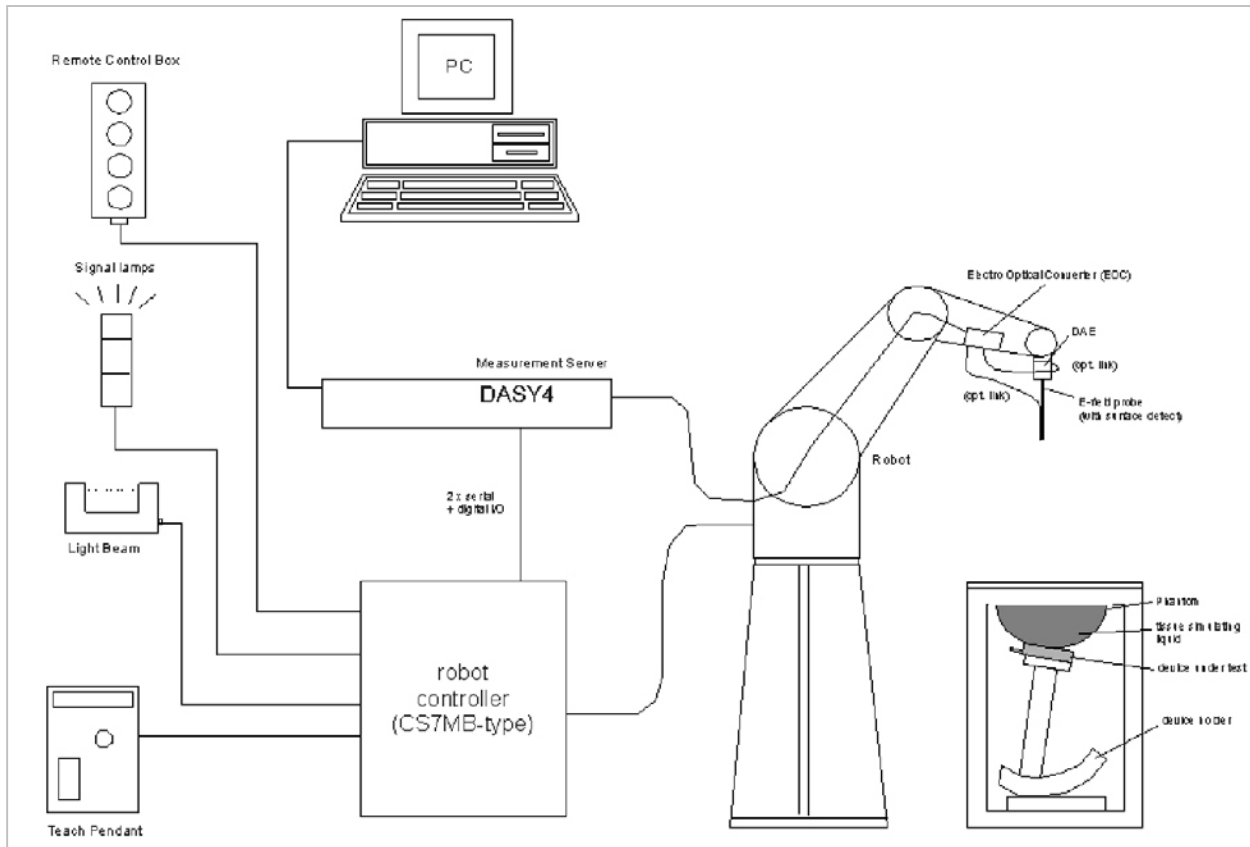
The test sites and measurement facilities used to collect data are located at 561F Monterey Road, Morgan Hill, California, USA. The sites are constructed in conformance with the requirements of ANSI C63.4, ANSI C63.7 and CISPR Publication 22. All receiving equipment conforms to CISPR Publication 16-1, "Radio Interference Measuring Apparatus and Measurement Methods."



CCS is accredited by NVLAP, Laboratory Code 200065-0. The full scope of accreditation can be viewed at <http://www.ccsemc.com>.

No part of this report may be used to claim product certification, approval, or endorsement by NVLAP, NIST, or any government agency.

### 3 SYSTEM DESCRIPTION



#### The DASY4 system for performing compliance tests consists of the following items:

- A standard high precision 6-axis robot (Stäubli RX family) with controller, teach pendant and software. An arm extension for accommodating the data acquisition electronics (DAE).
- A dosimetric probe, i.e., an isotropic E-field probe optimized and calibrated for usage in tissue simulating liquid. The probe is equipped with an optical surface detector system.
- A data acquisition electronics (DAE) which performs the signal amplification, signal multiplexing, AD-conversion, offset measurements, mechanical surface detection, collision detection, etc. The unit is battery powered with standard or rechargeable batteries. The signal is optically transmitted to the EOC.
- The function of the measurement server is to perform the time critical tasks such as signal filtering, control of the robot operation and fast movement interrupts.
- A probe alignment unit which improves the (absolute) accuracy of the probe positioning.
- A computer operating Windows 2000 or Windows XP.
- DASY4 software.
- Remote controls with teach pendant and additional circuitry for robot safety such as warning lamps, etc.
- The SAM twin phantom enabling testing left-hand and right-hand usage.
- The device holder for handheld mobile phones.
- Tissue simulating liquid mixed according to the given recipes.
- Validation dipole kits allowing to validate the proper functioning of the system.

### 3.1 COMPOSITION OF INGREDIENTS FOR TISSUE SIMULATIG LIQUIDS

The following tissue formulations are provided for reference only as some of the parameters have not been thoroughly verified. The composition of ingredients may be modified accordingly to achieve the desired target tissue parameters required for routine SAR evaluation.

Ingredients (% by weight)	Frequency (MHz)									
	450		835		915		1900		2450	
Tissue Type	Head	Body	Head	Body	Head	Body	Head	Body	Head	Body
Water	38.56	51.16	41.45	52.4	41.05	56.0	54.9	40.4	62.7	73.2
Salt (NaCl)	3.95	1.49	1.45	1.4	1.35	0.76	0.18	0.5	0.5	0.04
Sugar	56.32	46.78	56.0	45.0	56.5	41.76	0.0	58.0	0.0	0.0
HEC	0.98	0.52	1.0	1.0	1.0	1.21	0.0	1.0	0.0	0.0
Bactericide	0.19	0.05	0.1	0.1	0.1	0.27	0.0	0.1	0.0	0.0
Triton X-100	0.0	0.0	0.0	0.0	0.0	0.0	0.0	0.0	36.8	0.0
DGBE	0.0	0.0	0.0	0.0	0.0	0.0	44.92	0.0	0.0	26.7
Dielectric Constant	43.42	58.0	42.54	56.1	42.0	56.8	39.9	54.0	39.8	52.5
Conductivity (S/m)	0.85	0.83	0.91	0.95	1.0	1.07	1.42	1.45	1.88	1.78

Salt: 99+% Pure Sodium Chloride

Sugar: 98+% Pure Sucrose

Water: De-ionized, 16 MΩ+ resistivity

HEC: Hydroxyethyl Cellulose

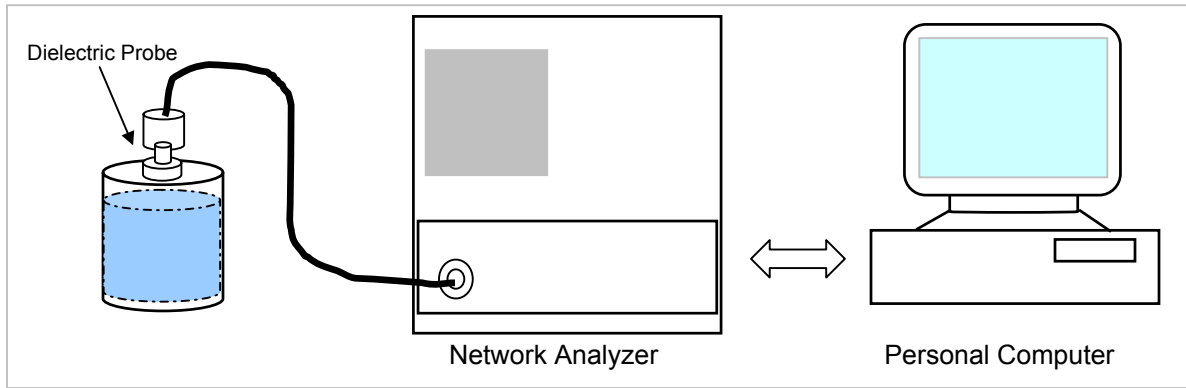
DGBE: 99+% Di(ethylene glycol) butyl ether, [2-(2-butoxyethoxy)ethanol]

Triton X-100 (ultra pure): Polyethylene glycol mono [4-(1,1, 3, 3-tetramethylbutyl)phenyl]ether



**4 SIMULATING LIQUID PARAMETERS CHECK**

The simulating liquids should be checked at the beginning of a series of SAR measurements to determine if the dielectric parameters are within the tolerances of the specified target values. The relative permittivity and conductivity of the tissue material should be within  $\pm 5\%$  of the values given in the table below.



Set-up for liquid parameters check

**Reference Values of Tissue Dielectric Parameters for Head and Body Phantom (for 150 – 3000 MHz and 5800 MHz)**

The head tissue dielectric parameters recommended by the IEEE SCC-34/SC-2 in IEEE Standard 1528 have been incorporated in the following table. These head parameters are derived from planar layer models simulating the highest expected SAR for the dielectric properties and tissue thickness variations in a human head. Other head and body tissue parameters that have not been specified in P1528 are derived from the tissue dielectric parameters computed from the 4-Cole-Cole equations and extrapolated according to the head parameters specified in IEEE Standard 1528.

Target Frequency (MHz)	Head		Body	
	$\epsilon_r$	$\sigma$ (S/m)	$\epsilon_r$	$\sigma$ (S/m)
150	52.3	0.76	61.9	0.80
300	45.3	0.87	58.2	0.92
450	43.5	0.87	56.7	0.94
835	41.5	0.90	<b>55.2</b>	<b>0.97</b>
900	41.5	0.97	55.0	1.05
915	41.5	0.98	55.0	1.06
1450	40.5	1.20	54.0	1.30
1610	40.3	1.29	53.8	1.40
1800 – 2000	40.0	1.40	<b>53.3</b>	<b>1.52</b>
2450	39.2	1.80	52.7	1.95
3000	38.5	2.40	52.0	2.73
5800	35.3	5.27	48.2	6.00

( $\epsilon_r$  = relative permittivity,  $\sigma$  = conductivity and  $\rho = 1000 \text{ kg/m}^3$ )

**4.1 SIMULATING LIQUID PARAMETER CHECK RESULT**

Simulating Liquid Dielectric Parameters Check Result @ Muscle 835 MHz

Room Ambient Temperature = 23°C; Relative humidity = 40%

Measured by: Ninous Davoudi

Simulating Liquid			Parameters		Measured	Target	Deviation (%)	Limit (%)	
f (MHz)	Temp. (°C)	Depth (cm)							
835	22	15	e'	54.6536	Relative Permittivity (ε <sub>r</sub> ):	54.6536	55.2	-0.99	± 5
			e"	21.0282	Conductivity (σ):	0.97680	0.97	0.70	± 5

Liquid Check

Ambient temperature: 23.0 deg. C; Liquid temperature: 22.0 deg C

October 10, 2006 04:35 PM

Frequency	e'	e"
800000000.	54.9794	21.1487
805000000.	54.9332	21.1146
810000000.	54.9188	21.1032
815000000.	54.8680	21.0824
820000000.	54.8166	21.0566
825000000.	54.7855	21.0681
830000000.	54.7232	21.0522
<b>835000000.</b>	<b>54.6536</b>	<b>21.0282</b>
840000000.	54.6250	21.0223
845000000.	54.5540	20.9885
850000000.	54.5046	20.9798
855000000.	54.4489	20.9518
860000000.	54.4025	20.8883
865000000.	54.3430	20.8734
870000000.	54.2939	20.8548
875000000.	54.2386	20.8175
880000000.	54.1915	20.7987
885000000.	54.1397	20.7926
890000000.	54.0761	20.7807
895000000.	54.0792	20.7218
900000000.	54.0409	20.7161

The conductivity (σ) can be given as:

$$\sigma = \omega \epsilon_0 e'' = 2 \pi f \epsilon_0 e''$$

where  $f = \text{target } f * 10^6$

$$\epsilon_0 = 8.854 * 10^{-12}$$

Simulating Liquid Dielectric Parameters Check Result @ Muscle 835 MHz

Room Ambient Temperature = 23°C; Relative humidity = 40%

Measured by: Ninous Davoudi

Simulating Liquid			Parameters		Measured	Target	Deviation (%)	Limit (%)	
f (MHz)	Temp. (°C)	Depth (cm)							
835	22	15	e'	54.4519	Relative Permittivity (ε <sub>r</sub> ):	54.4519	55.2	-1.36	± 5
			e"	20.8709	Conductivity (σ):	0.96950	0.97	-0.05	± 5

Liquid Check

Ambient temperature: 23.0 deg. C; Liquid temperature: 22.0 deg C

October 18, 2006 05:23 PM

Frequency	e'	e"
800000000.	54.7671	21.0647
805000000.	54.7548	20.9969
810000000.	54.6826	20.9963
815000000.	54.6659	20.9590
820000000.	54.6184	20.9274
825000000.	54.5523	20.9029
830000000.	54.5073	20.8877
<b>835000000.</b>	<b>54.4519</b>	<b>20.8709</b>
840000000.	54.4168	20.8469
845000000.	54.3670	20.8395
850000000.	54.3039	20.7937
855000000.	54.2561	20.7859
860000000.	54.1964	20.7721
865000000.	54.1716	20.7344
870000000.	54.1081	20.7333
875000000.	54.0642	20.7247
880000000.	54.0157	20.7287
885000000.	53.9645	20.7232
890000000.	53.9053	20.7209
895000000.	53.8854	20.6825
900000000.	53.8561	20.6584

The conductivity (σ) can be given as:

$$\sigma = \omega \epsilon_0 e'' = 2 \pi f \epsilon_0 e''$$

where  $f = \text{target } f * 10^6$

$$\epsilon_0 = 8.854 * 10^{-12}$$

Simulating Liquid Dielectric Parameters Check Result @ Muscle 1900 MHz

Room Ambient Temperature = 23 °C; Relative humidity = 42 %

Measured by: Sunny Shih

Simulating Liquid			Parameters		Measured	Target	Deviation (%)	Limit (%)	
f (MHz)	Temp. (°C)	Depth (cm)							
1900	22	15	e'	53.9854	Relative Permittivity (ε <sub>r</sub> ):	53.9854	53.3	1.29	± 5
			e"	14.1546	Conductivity (σ):	1.49613	1.52	-1.57	± 5

Liquid Check

Ambient temperature: 23 deg. C; Liquid temperature: 22 deg C

October 11, 2006 01:03 PM

Frequency	e'	e"
1750000000.	54.4734	13.5386
1760000000.	54.4335	13.5689
1770000000.	54.4262	13.6041
1780000000.	54.4005	13.6370
1790000000.	54.4004	13.6879
1800000000.	54.3699	13.7437
1810000000.	54.3158	13.7950
1820000000.	54.2645	13.8183
1830000000.	54.2063	13.8520
1840000000.	54.1687	13.8896
1850000000.	54.1317	13.9417
1860000000.	54.0795	13.9787
1870000000.	54.0387	14.0019
1880000000.	54.0240	14.0232
1890000000.	54.0192	14.0686
<b>1900000000.</b>	<b>53.9854</b>	<b>14.1046</b>
1910000000.	53.9450	14.1546
1920000000.	53.8916	14.1732
1930000000.	53.8617	14.2066
1940000000.	53.8179	14.2464
1950000000.	53.7643	14.2778

The conductivity (σ) can be given as:

$$\sigma = \omega \epsilon_0 e'' = 2 \pi f \epsilon_0 e''$$

where  $f = \text{target } f * 10^6$

$$\epsilon_0 = 8.854 * 10^{-12}$$

Simulating Liquid Dielectric Parameters Check Result @ Muscle 1900 MHz

Room Ambient Temperature = 23°C; Relative humidity = 42%

Measured by: Sunny Shih

Simulating Liquid			Parameters		Measured	Target	Deviation (%)	Limit (%)	
f (MHz)	Temp. (°C)	Depth (cm)							
1900	22	15	e'	53.5749	Relative Permittivity (ε <sub>r</sub> ):	53.5749	53.3	0.52	± 5
			e"	14.2586	Conductivity (σ):	1.50713	1.52	-0.85	± 5

Liquid Check

Ambient temperature: 23 deg. C; Liquid temperature: 22 deg C  
 October 19, 2006 12:00 PM

Frequency	e'	e"
1750000000.	54.1736	13.5085
1760000000.	54.0818	13.6150
1770000000.	54.0388	13.6980
1780000000.	54.0213	13.7479
1790000000.	54.0581	13.7981
1800000000.	54.0528	13.8482
1810000000.	54.0293	13.8628
1820000000.	53.9811	13.8150
1830000000.	53.9854	13.7790
1840000000.	53.9553	13.8333
1850000000.	53.8660	13.9491
1860000000.	53.7239	14.0442
1870000000.	53.5959	14.0797
1880000000.	53.5504	14.1028
1890000000.	53.5706	14.1788
<b>1900000000.</b>	<b>53.5749</b>	<b>14.2586</b>
1910000000.	53.5711	14.2726
1920000000.	53.5772	14.2294
1930000000.	53.6399	14.2055
1940000000.	53.6376	14.2655
1950000000.	53.5636	14.3213

The conductivity (σ) can be given as:

$$\sigma = \omega \epsilon_0 e'' = 2 \pi f \epsilon_0 e''$$

where  $f = \text{target } f * 10^6$

$$\epsilon_0 = 8.854 * 10^{-12}$$

## 5 SYSTEM PERFORMANCE CHECK

The system performance check is performed prior to any usage of the system in order to guarantee reproducible results. The system performance check verifies that the system operates within its specifications of  $\pm 10\%$ .

### System Performance Check Measurement Conditions

- The measurements were performed in the flat section of the SAM twin phantom filled with Body simulating liquid of the following parameters.
- The DASY4 system with an Isotropic E-Field Probe EX3DV3-SN: 3531 was used for the measurements.
- The dipole was mounted on the small tripod so that the dipole feed point was positioned below the center marking of the flat phantom section and the dipole was oriented parallel to the body axis (the long side of the phantom). The standard measuring distance was 10 mm (above 1 GHz) and 15 mm (below 1 GHz) from dipole center to the simulating liquid surface.
- The coarse grid with a grid spacing of 15 mm was aligned with the dipole.  
For 5 GHz band - The coarse grid with a grid spacing of 10 mm was aligned with the dipole.
- Special 5 x 5 x 7 fine cube was chosen for cube integration(dx=dy=7.5mm; dz=5mm).  
For 5 GHz band - Special 8x8x8 fine cube was chosen for cube integration(dx=dy=4.3mm; dz=3mm)
- Distance between probe sensors and phantom surface was set to 4 mm.  
For 5 GHz band - Distance between probe sensors and phantom surface was set to 2.0mm
- The dipole input power (forward power) was 250 mW $\pm 3\%$ .
- The results are normalized to 1 W input power.

### Reference SAR Values for body-tissue

In the table below, the numerical reference SAR values of a SPEAG validation dipoles placed below the flat phantom filled with body-tissue simulating liquid are given. The reference SAR values were calculated using the finite-difference time-domain method and the geometry parameters.

Dipole Type	Distance (mm)	Frequency (MHz)	SAR (1g) [W/kg]	SAR (10g) [W/kg]	SAR (peak) [W/kg]
D450V2	15	450	5.01	3.36	7.22
D835V2	15	835	<b>9.71</b>	<b>6.38</b>	14.1
D900V2	15	900	11.1	7.17	16.3
D1450V2	10	1450	29.6	16.6	49.8
D1800V2	10	1800	38.5	20.3	67.5
D1900V2	10	1900	<b>39.8</b>	<b>20.8</b>	69.6
D2000V2	10	2000	40.9	21.2	71.5
D2450V2	10	2450	51.2	23.7	97.6

Note: All SAR values normalized to 1 W forward power.

**5.1 SYSTEM PERFORMANCE CHECK RESULTS**

**System Validation Dipole: D835V2 SN:4d002**

Date: October 10, 2006

Room Ambient Temperature = 23°C; Relative humidity = 40%

Measured by: Ninous Davoudi

Body Simulating Liquid			SAR (mW/g)		Normalized to 1 W	Target	Deviation (%)	Limit (%)
f (MHz)	Temp. (°C)	Depth (cm)						
835	22	15	1g	2.50	10	9.71	2.99	± 10
			10g	1.65	6.6	6.38	3.45	± 10

Date: October 18, 2006

Room Ambient Temperature = 23°C; Relative humidity = 40%

Measured by: Ninous Davoudi

Body Simulating Liquid			SAR (mW/g)		Normalized to 1 W	Target	Deviation (%)	Limit (%)
f (MHz)	Temp. (°C)	Depth (cm)						
835	22	15	1g	2.48	9.92	9.71	2.16	± 10
			10g	1.64	6.56	6.38	2.82	± 10

**System Validation Dipole: D1900V2 SN:5d043**

Date: October 11, 2006

Room Ambient Temperature = 23°C; Relative humidity = 42 %

Measured by: Sunny Shih

Body Simulating Liquid			SAR (mW/g)		Normalized to 1 W	Target	Deviation (%)	Limit (%)
f (MHz)	Temp. (°C)	Depth (cm)						
1900	22	15	1g	9.64	38.56	39.8	-3.12	± 10
			10g	5.14	20.56	20.8	-1.15	± 10

Date: October 19, 2006

Room Ambient Temperature = 23°C; Relative humidity = 42%

Measured by: Sunny Shih

Body Simulating Liquid			SAR (mW/g)		Normalized to 1 W	Target	Deviation (%)	Limit (%)
f (MHz)	Temp. (°C)	Depth (cm)						
1900	22	15	1g	9.75	39	39.8	-2.01	± 10
			10g	5.2	20.8	20.8	0.00	± 10

## 6 SAR MEASUREMENT PROCEDURE

A summary of the procedure follows:

- a) A measurement of the SAR value at a fixed location is used as a reference value for assessing the power drop of the EUT. The SAR at this point is measured at the start of the test, and then again at the end of the test.
- b) The SAR distribution at the exposed flat section of the flat phantom is measured at a distance of 4 mm from the inner surface of the shell. The area covers the entire dimension of the EUT and the horizontal grid spacing is 15 mm x 15 mm. Based on this data, the area of the maximum absorption is determined by Spline interpolation. The first Area Scan covers the entire dimension of the EUT to ensure that the hotspot was correctly identified.

For 5 GHz band - The SAR distribution at the exposed flat section of the flat phantom is measured at a distance of 2.0 mm from the inner surface of the shell. The area covers the entire dimension of the EUT and the horizontal grid spacing is 10 mm x 10 mm. Based on this data, the area of the maximum absorption is determined by Spline interpolation. The first Area Scan covers the entire dimension of the EUT to ensure that the hotspot was correctly identified.

- c) Around this point, a volume of X=Y= 30 and Z=21 mm is assessed by measuring 5 x 5 x 7 mm points. On the basis of this data set, the spatial peak SAR value is evaluated with the following procedure:

For 5 GHz band - Around this point, a volume of X=Y=Z=30 mm is assessed by measuring 8 x 8 x 8 mm points. On the basis of this data set, the spatial peak SAR value is evaluated with the following procedure:

- (i) The data at the surface are extrapolated, since the centre of the dipoles is 1.2 mm away from the tip of the probe and the distance between the surface and the lowest measuring point is 1.3 mm. The extrapolation is based on a least square algorithm. A polynomial of the fourth order is calculated through the points in z-axes. This polynomial is then used to evaluate the points between the surface and the probe tip.
- (ii) The maximum interpolated value is searched with a straightforward algorithm. Around this maximum the SAR values averaged over the spatial volumes (1 g and 10 g) are computed using the 3D-Spline interpolation algorithm. The 3D-Spline is composed of three one-dimensional splines with the "Not a knot"- condition (in x, y and z-direction). The volume is integrated with the trapezoidal – algorithm. One thousand points (10 x 10 x 10) are interpolated to calculate the averages.
- (iii) All neighbouring volumes are evaluated until no neighbouring volume with a higher average value is found.
- (iv) The SAR value at the same location as in Step (a) is again measured to evaluate the actual power drift.



## 6.1 DASY4 SAR MEASUREMENT PROCEDURE

### Step 1: Power Reference Measurement

The Power Reference Measurement and Power Drift Measurements are for monitoring the power drift of the device under test in the batch process. The Minimum distance of probe sensors to surface determines the closest measurement point to phantom surface. The minimum distance of probe sensors to surface is 2.1 mm. This distance cannot be smaller than the Distance of sensor calibration points to probe tip as defined in the probe properties (for example, 1.2 mm for an EX3DV3 probe type).

### Step 2: Area Scan

The Area Scan is used as a fast scan in two dimensions to find the area of high field values, before doing a fine measurement around the hot spot. The sophisticated interpolation routines implemented in DASY4 software can find the maximum locations even in relatively coarse grids. When an Area Scan has measured all reachable points, it computes the field maximal found in the scanned area, within a range of the global maximum. The range (in dB) is specified in the standards for compliance testing. For example, a 2 dB range is required in IEEE Standard 1528, EN 50361 and IEC 62209 standards, whereby 3 dB is a requirement when compliance is assessed in accordance with the ARIB standard (Japan). If only one Zoom Scan follows the Area Scan, then only the absolute maximum will be taken as reference. For cases where multiple maximums are detected, the number of Zoom Scans has to be increased accordingly.

### Step 3: Zoom Scan

Zoom Scans are used to assess the peak spatial SAR values within a cubic averaging volume containing 1 g and 10 g of simulated tissue. The Zoom Scan measures 5 x 5 x 7 points within a cube whose base faces are centered on the maxima found in a preceding area scan job within the same procedure. When the measurement is done, the Zoom Scan evaluates the averaged SAR for 1 g and 10 g and displays these values next to the job's label.

For 5 GHz band – Same as above except the Zoom Scan measures 8 x 8 x 8 points.

### Step 4: Power drift measurement

The Power Drift Measurement measures the field at the same location as the most recent power reference measurement within the same procedure, and with the same settings. The Power Drift Measurement gives the field difference in dB from the reading conducted within the last Power Reference Measurement. This allows a user to monitor the power drift of the device under test within a batch process. The measurement procedure is the same as Step 1.

### Step 5: Z-Scan

The Z Scan measures points along a vertical straight line. The line runs along the Z-axis of a one-dimensional grid. In order to get a reasonable extrapolation, the extrapolated distance should not be larger than the step size in Z-direction.

## 7 PROCEDURE USED TO ESTABLISH TEST SIGNAL

The following procedures had been used to prepare the EUT for the SAR test.

Agilent 8960 Communication Test Set was used to control the channel and measure the conducted power. The cable loss of 0.4 dB (Cell band) and 0.6 dB (PCS band) were entered as an offset in the Agilent 8960 Communication Test Set to measure the channel power.

The following setting was used during test for 1x RTT RC3 SO32 (+F-SCH):

### Call Parm

Radio config: FWD3, RVS3

Service option: SO32 (+F-SCH)

Pwr Ctrl Parm: Active bits (Select "All Up bits" after linked to get maximum power)

Protocol Rev.: 6 (IS-2000-0)

### CDMA2000 1xRTT Cell Band

Channel	Frequency (MHz)	Channel Power (dBm)
1013	824.70	24.50
384	836.52	24.30
777	848.31	23.80

### CDMA2000 1xRTT PCS Band

Channel	Frequency (MHz)	Channel Power (dBm)
25	1851.25	24.50
600	1880.00	23.90
1175	1908.75	24.10

The following setting was used during test for 1xEV-DO Rev.0

### Call Parm:

Application Config: RTAP

FTAP Rate: 307.2 Kbps

RTAP Rate: 153.6 Kbps

Pwr Ctrl Parm: Active bits (Select "All Up bits" after linked to get maximum power)

Protocol Rev.: 0 (1xEV-DO)

### Call Control:

AT Max Power: 23 dBm/1.23 MHz

### CDMA2000 1xEV-DO Cell Band

Channel	Frequency (MHz)	Channel Power (dBm)
1013	824.70	24.50
384	836.52	24.30
777	848.31	23.80

### CDMA2000 1xEV-DO PCS Band

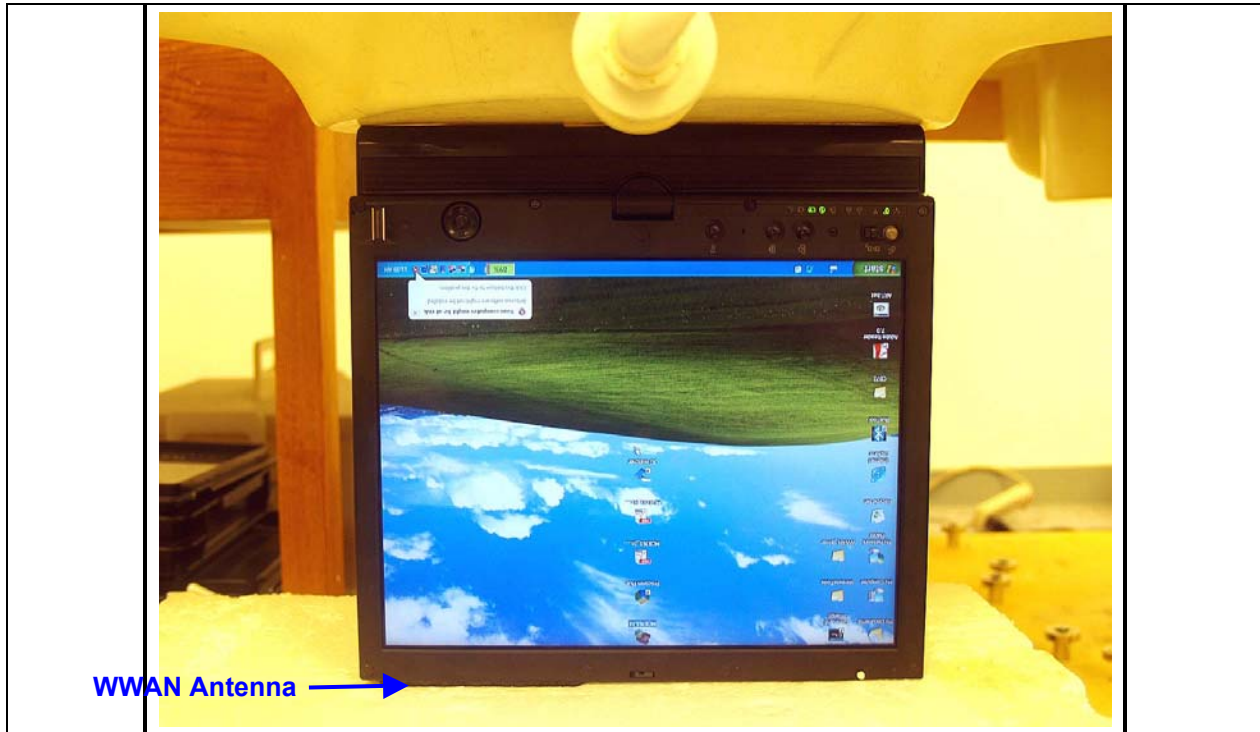
Channel	Frequency (MHz)	Channel Power (dBm)
25	1851.25	24.90
600	1880.00	24.60
1175	1908.75	24.20

### 8 SAR MEASUREMENT RESULTS

The following positions are skipped.

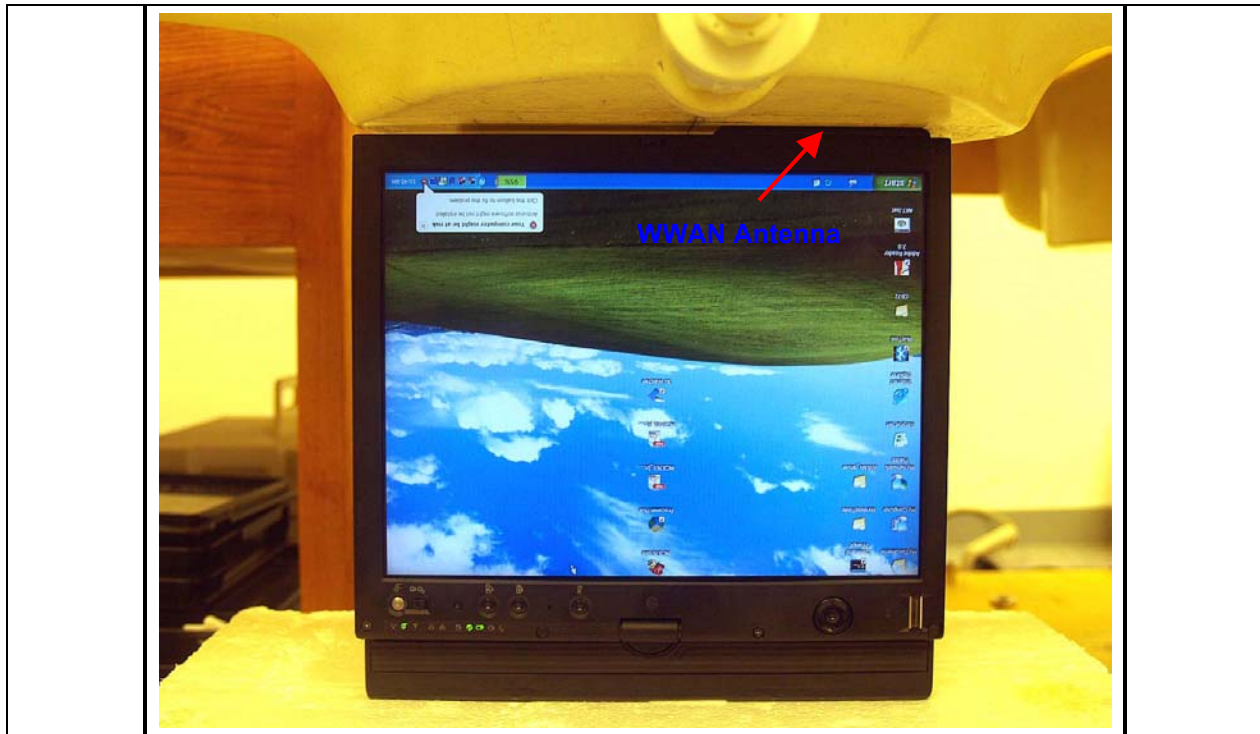
#### LCD EDGE POSITION – PRIMARY LANDSCAPE

Primary Landscape is skipped since SAR values are too low.



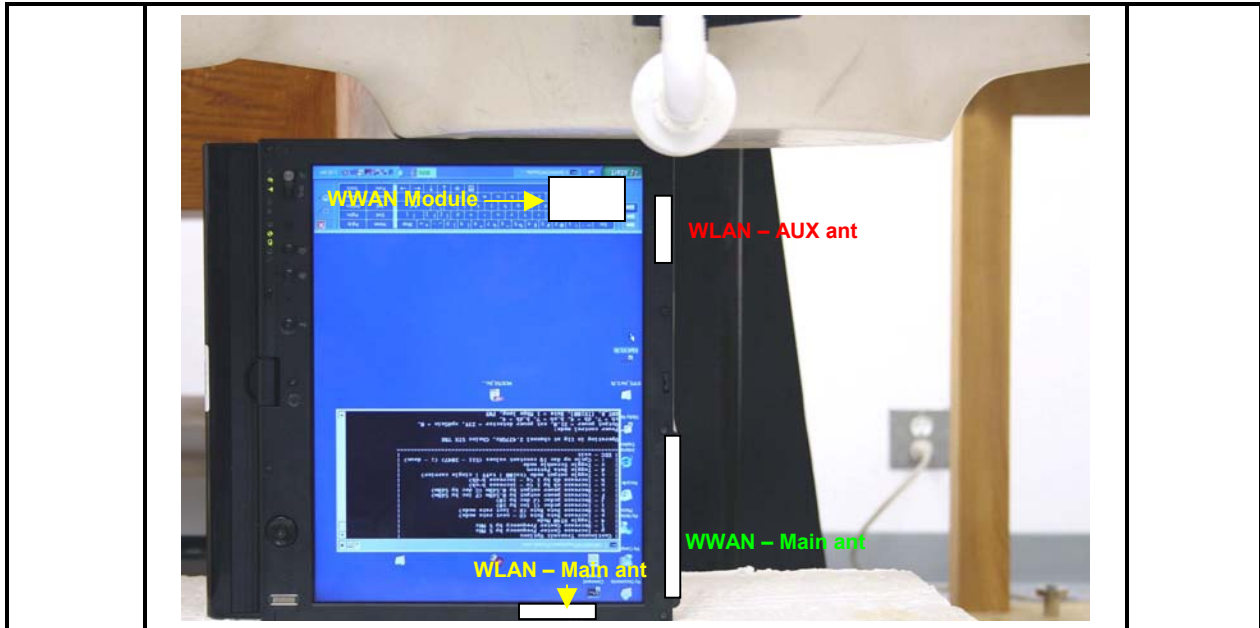
**LCD EDGE POSITION – SECONDARY LANDSCAPE**

Primary Landscape is skipped since WWAN is disabled at this position.



**8.1 CELL BAND**

**8.1.1 EDGE POSITION – PRIMARY PORTRAIT**



<b>1xRTT - RC3 SO32 (+F-SCH)</b>				
Channel	f (MHz)	Measured SAR 1g (mW/g)	Power Drift (dB)	Extrapolated1) SAR 1g (mW/g)
1013	824.70	0.062	0.000	0.062
384	836.52			
777	848.31			
<b>1xEV DO</b>				
Channel	f (MHz)	Measured SAR 1g (mW/g)	Power Drift (dB)	Extrapolated1) SAR 1g (mW/g)
1013	824.70	0.066	0.000	0.066
384	836.52			
777	848.31			

Notes:

- 1) The exact method of extrapolation is  $\text{Measured SAR} \times 10^{(-\text{drift}/10)}$ . The SAR reported at the end of the measurement process by the DASY4 system can be scaled up by the Power drift to determine the SAR at the beginning of the measurement process.
- 2) Please see attachments for the detailed measurement data and plots showing the maximum SAR location of the EUT.

**8.1.2 EDGE POSITION – SECONDARY PORTRIAT**



<b>1xRTT - RC3 SO32 (+F-SCH)</b>				
Channel	f (MHz)	Measured SAR 1g (mW/g)	Power Drift (dB)	Extrapolated1) SAR 1g (mW/g)
1013	824.70			
384	836.52	0.169	0.000	0.169
777	848.31			
<b>1xEV DO</b>				
Channel	f (MHz)	Measured SAR 1g (mW/g)	Power Drift (dB)	Extrapolated1) SAR 1g (mW/g)
1013	824.70	0.144	-0.094	0.147
<b>384</b>	<b>836.52</b>	<b>0.175</b>	<b>-0.197</b>	<b>0.183</b>
777	848.31	0.156	-0.152	0.162

Notes:

- 1) The exact method of extrapolation is  $\text{Measured SAR} \times 10^{(-\text{drift}/10)}$ . The SAR reported at the end of the measurement process by the DASY4 system can be scaled up by the Power drift to determine the SAR at the beginning of the measurement process.
- 2) Please see attachments for the detailed measurement data and plots showing the maximum SAR location of the EUT.

**8.1.3 LAP HELD POSITION**

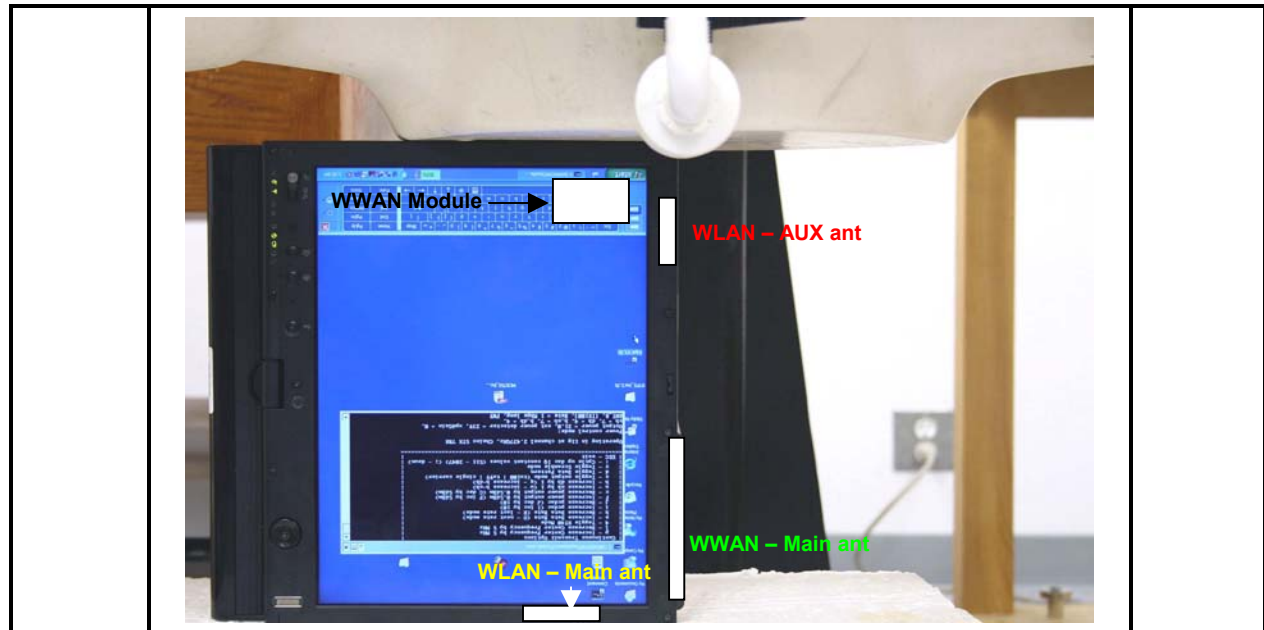


<b>1xRTT - RC3 SO32 (+F-SCH)</b>				
Channel	f (MHz)	Measured SAR 1g (mW/g)	Power Drift (dB)	Extrapolated1) SAR 1g (mW/g)
1013	824.70	0.063	-0.163	0.065
384	836.52			
777	848.31			
<b>1xEV DO</b>				
Channel	f (MHz)	Measured SAR 1g (mW/g)	Power Drift (dB)	Extrapolated1) SAR 1g (mW/g)
1013	824.70	0.064	-0.275	0.068
384	836.52	0.066	-0.100	0.067
777	848.31	0.081	0.000	0.081

- Notes:
- 1) The exact method of extrapolation is  $\text{Measured SAR} \times 10^{(-\text{drift}/10)}$ . The SAR reported at the end of the measurement process by the DASY4 system can be scaled up by the Power drift to determine the SAR at the beginning of the measurement process.
  - 2) Please see attachments for the detailed measurement data and plots showing the maximum SAR location of the EUT.

**8.2 PCS BAND**

**8.2.1 EDGE POSITION – PRIMARY PORTRAIT**



<b>1xRTT - RC3 SO32 (+F-SCH)</b>				
Channel	f (MHz)	Measured SAR 1g (mW/g)	Power Drift (dB)	Extrapolated1) SAR 1g (mW/g)
25	1851.25	0.042	0.000	0.042
600	1880.00			
1175	1908.75			
<b>1xEV DO</b>				
Channel	f (MHz)	Measured SAR 1g (mW/g)	Power Drift (dB)	Extrapolated1) SAR 1g (mW/g)
25	1851.25	0.045	-0.119	0.046
600	1880.00			
1175	1908.75			

Notes:

- 1) The exact method of extrapolation is  $\text{Measured SAR} \times 10^{(-\text{drift}/10)}$ . The SAR reported at the end of the measurement process by the DASY4 system can be scaled up by the Power drift to determine the SAR at the beginning of the measurement process.
- 2) Please see attachments for the detailed measurement data and plots showing the maximum SAR location of the EUT.



**8.2.2 EDGE POSITION – SECONDARY PORTRIAT**



**1xRTT - RC3 SO32 (+F-SCH)**

Channel	f (MHz)	Measured SAR 1g (mW/g)	Power Drift (dB)	Extrapolated1) SAR 1g (mW/g)
25	1851.25	0.088	-0.026	0.088
600	1880.00			
1175	1908.75			

**1xEV DO**

Channel	f (MHz)	Measured SAR 1g (mW/g)	Power Drift (dB)	Extrapolated1) SAR 1g (mW/g)
25	1851.25	0.091	0.000	0.091
600	1880.00	0.092	0.000	0.092
1175	1908.75	0.096	-0.081	0.097

Notes:

- 1) The exact method of extrapolation is  $\text{Measured SAR} \times 10^{(-\text{drift}/10)}$ . The SAR reported at the end of the measurement process by the DASY4 system can be scaled up by the Power drift to determine the SAR at the beginning of the measurement process.
- 2) Please see attachments for the detailed measurement data and plots showing the maximum SAR location of the EUT.

**8.2.3 LAP HELD POSITION**



<b>1xRTT - RC3 SO32 (+F-SCH)</b>				
Channel	f (MHz)	Measured SAR 1g (mW/g)	Power Drift (dB)	Extrapolated1) SAR 1g (mW/g)
25	1851.25	0.377	0.000	0.377
600	1880.00			
1175	1908.75			
<b>1xEV DO</b>				
Channel	f (MHz)	Measured SAR 1g (mW/g)	Power Drift (dB)	Extrapolated1) SAR 1g (mW/g)
<b>25</b>	<b>1851.25</b>	<b>0.427</b>	<b>-0.087</b>	<b>0.436</b>
600	1880.00	0.378	-0.155	0.392
1175	1908.75	0.298	0.000	0.298

- Notes:
- 1) The exact method of extrapolation is  $\text{Measured SAR} \times 10^{(-\text{drift}/10)}$ . The SAR reported at the end of the measurement process by the DASY4 system can be scaled up by the Power drift to determine the SAR at the beginning of the measurement process.
  - 2) Please see attachments for the detailed measurement data and plots showing the maximum SAR location of the EUT.

**9 MEASUREMENT UNCERTAINTY**

**9.1 MEASUREMENT UNCERTAINTY FOR 300 MHz – 3000 MHz**

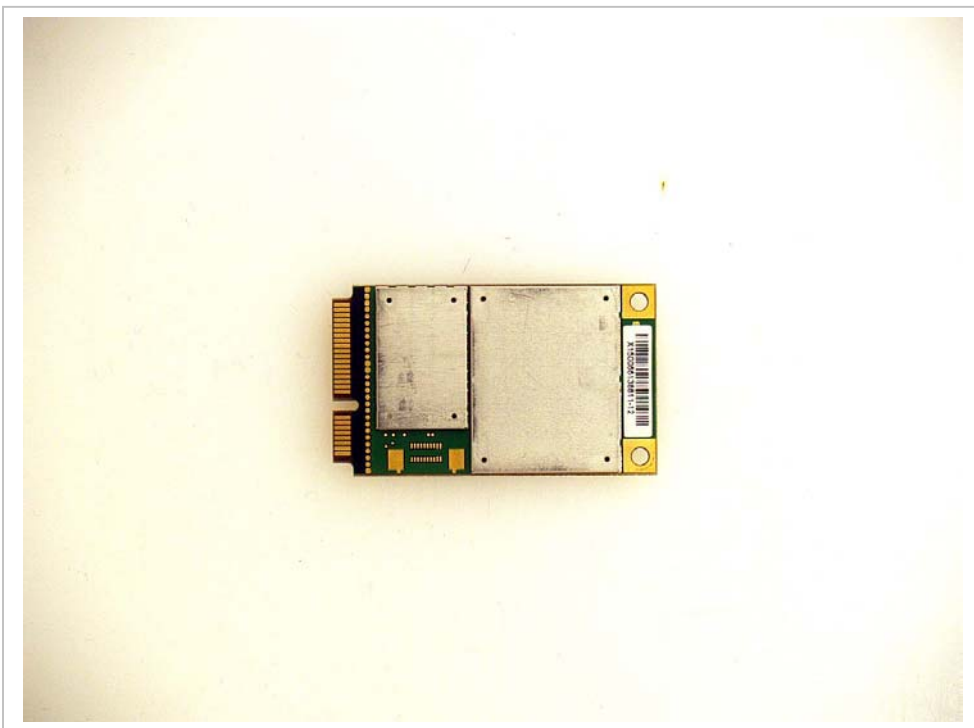
Uncertainty component	Tol. (±%)	Probe Dist.	Div.	Ci (1g)	Ci (10g)	Std. Unc.(±%)	
						Ui (1g)	Ui(10g)
<b>Measurement System</b>							
Probe Calibration	4.80	N	1	1	1	4.80	4.80
Axial Isotropy	4.70	R	1.732	0.707	0.707	1.92	1.92
Hemispherical Isotropy	9.60	R	1.732	0.707	0.707	3.92	3.92
Boundary Effects	1.00	R	1.732	1	1	0.58	0.58
Linearity	4.70	R	1.732	1	1	2.71	2.71
System Detection Limits	1.00	R	1.732	1	1	0.58	0.58
Readout Electronics	1.00	N	1	1	1	1.00	1.00
Response Time	0.80	R	1.732	1	1	0.46	0.46
Integration Time	2.60	R	1.732	1	1	1.50	1.50
RF Ambient Conditions - Noise	1.59	R	1.732	1	1	0.92	0.92
RF Ambient Conditions - Reflections	0.00	R	1.732	1	1	0.00	0.00
Probe Positioner Mechanical Tolerance	0.40	R	1.732	1	1	0.23	0.23
Probe Positioning With Respect to Phantom Shell	2.90	R	1.732	1	1	1.67	1.67
Extrapolation, interpolation, and integration algorithms for max. SAR evaluation	3.90	R	1.732	1	1	2.25	2.25
<b>Test sample Related</b>							
Test Sample Positioning	1.10	N	1	1	1	1.10	1.10
Device Holder Uncertainty	3.60	N	1	1	1	3.60	3.60
Power and SAR Drift Measurement	5.00	R	1.732	1	1	2.89	2.89
<b>Phantom and Tissue Parameters</b>							
Phantom Uncertainty	4.00	R	1.732	1	1	2.31	2.31
Liquid Conductivity - Target	5.00	R	1.732	0.64	0.43	1.85	1.24
Liquid Conductivity - Meas.	8.60	N	1	0.64	0.43	5.50	3.70
Liquid Permittivity - Target	5.00	R	1.732	0.6	0.49	1.73	1.41
Liquid Permittivity - Meas.	3.30	N	1	0.6	0.49	1.98	1.62
<b>Combined Standard Uncertainty</b>			RSS			11.44	10.49
<b>Expanded Uncertainty (95% Confidence Interval)</b>			K=2			22.87	20.98
Notes for table							
1. Tol. - tolerance in influence quantity							
2. N - Nomal							
3. R - Rectangular							
4. Div. - Divisor used to obtain standard uncertainty							
5. Ci - is te sensitivity coefficient							

**10 EQUIPMENT LIST AND CALIBRATION**

<u>Name of Equipment</u>	<u>Manufacturer</u>	<u>Type/Model</u>	<u>Serial Number</u>	<u>Cal. Due date</u>
Robot - Six Axes	Stäubli	RX90BL	N/A	N/A
Robot Remote Control	Stäubli	CS7MB	3403-91535	N/A
DASY4 Measurement Server	SPEAG	SEUMS001BA	1041	N/A
Probe Alignment Unit	SPEAG	LB (V2)	261	N/A
S-Parameter Network Analyzer	Agilent	8753ES-6	US39173569	2/9/07
Electronic Probe kit	Hewlett Packard	85070C	N/A	N/A
E-Field Probe	SPEAG	EX3DV4	3552	5/30/07
Thermometer	ERTCO	639-1S	1718	1/11/07
SAM Phantom (SAM1)	SPEAG	TP-1185	QD000P40CA	N/A
SAM Phantom (SAM2)	SPEAG	TP-1015	N/A	N/A
Data Acquisition Electronics	SPEAG	DAE4	558	1/20/07
System Validation Dipole	SPEAG	D835V2	4d002	1/23/08
System Validation Dipole	SPEAG	D1900V2	5d043	1/29/08
Power Meter	Giga-tronics	8651A	8651404	12/27/06
Power Sensor	Giga-tronics	80701A	1834588	12/27/07
Amplifier	Mini-Circuits	ZVE-8G	0360	N/A
Amplifier	Mini-Circuits	ZHL-42W	D072701-5	N/A
Radio Communication Tester	Rohde & Schwarz	CMU 200	838114/032	3/21/07
Radio Communication Tester	Agilent	E1968A	GB46160222	1/29/2007
Simulating Liquid	CCS	M835	N/A	Within 24 hrs of first test
Simulating Liquid	CCS	M1900	N/A	Within 24 hrs of first test

11 PHOTOS

DUT



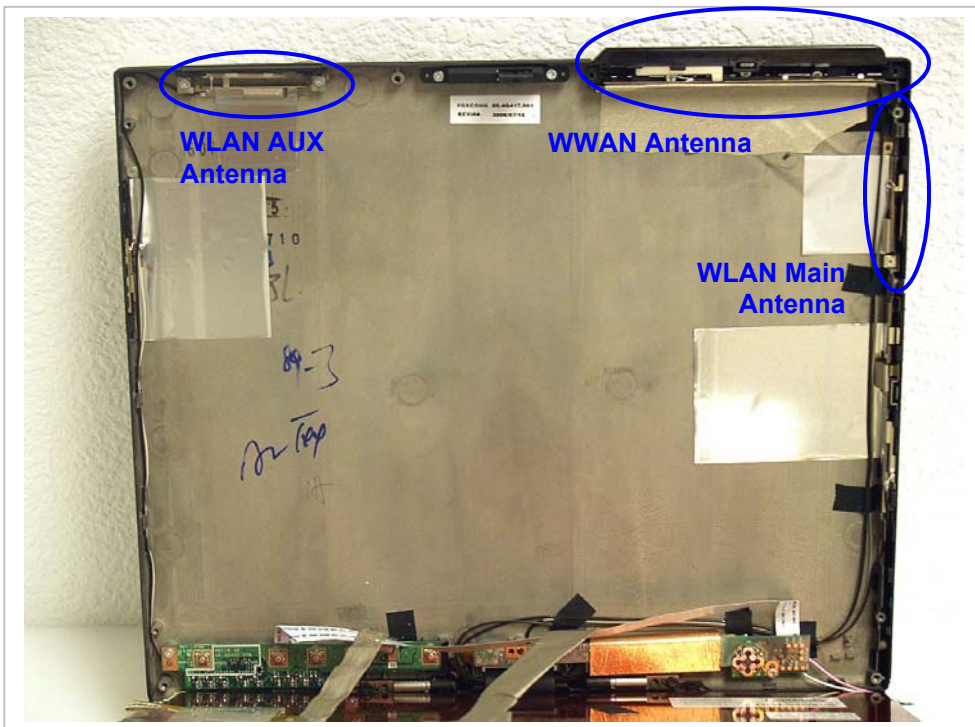
Host laptop – Normal Mode



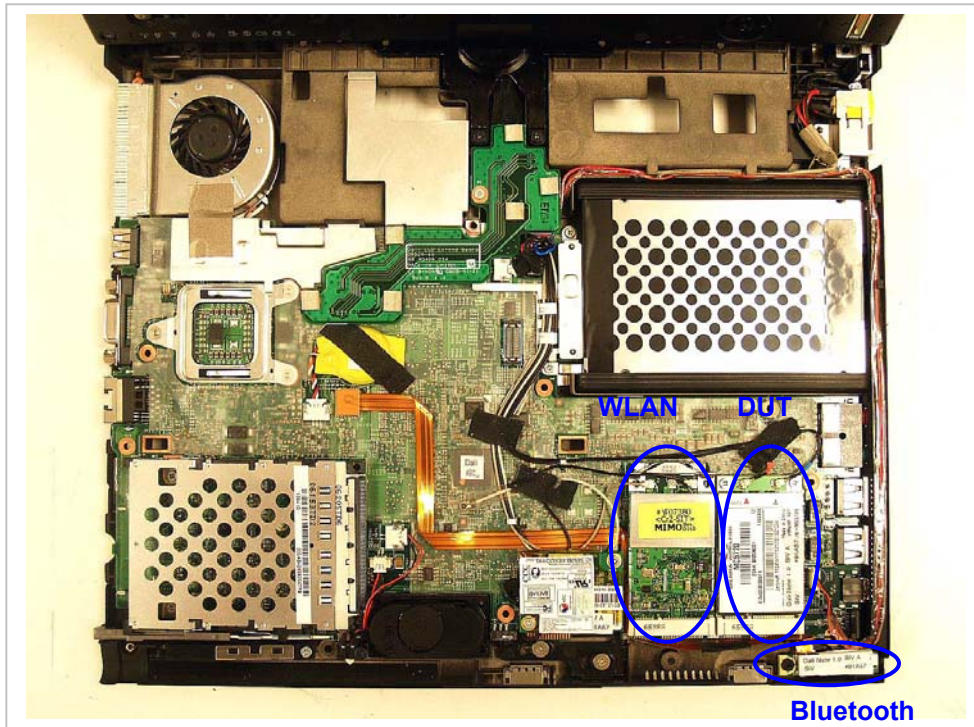
Host laptop – Tablet Mode



Antenna Location



DUT Location





**12 ATTACHMENTS**

<b>No.</b>	<b>Contents</b>	<b>No. Of Pages</b>
1	System Performance Check Plots	8
2-1	SAR Test Plots – Cell Band	12
2-2	SAR Test Plots – PCS Band	11
3	Certificate of E-Field Probe - EXDV4SN3552	9
4	Certificate of System Validation Dipole - D835V2 SN:4d002	9
5	Certificate of System Validation Dipole - D1900V2 SN:5d043	9

**END OF REPORT**